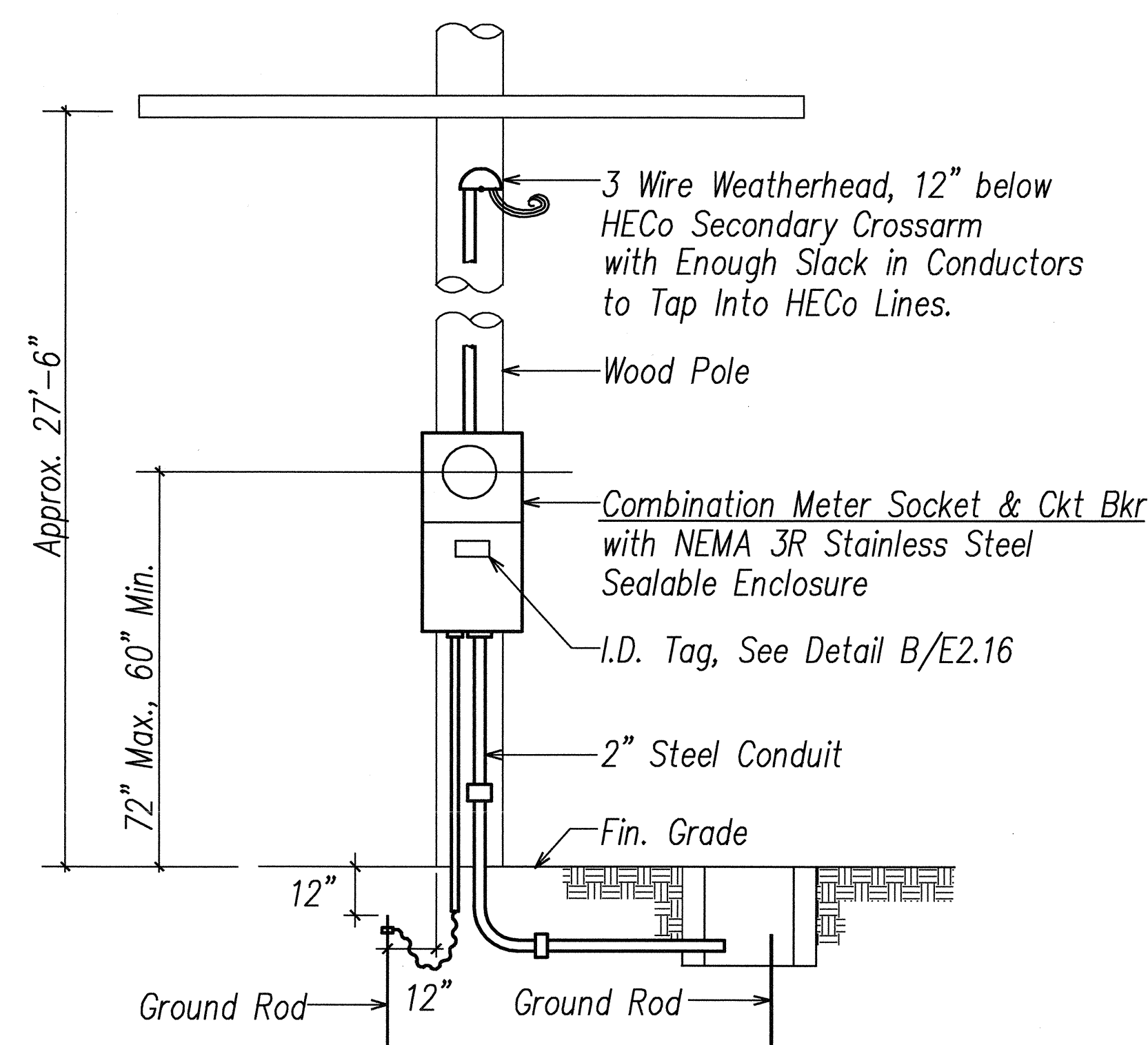
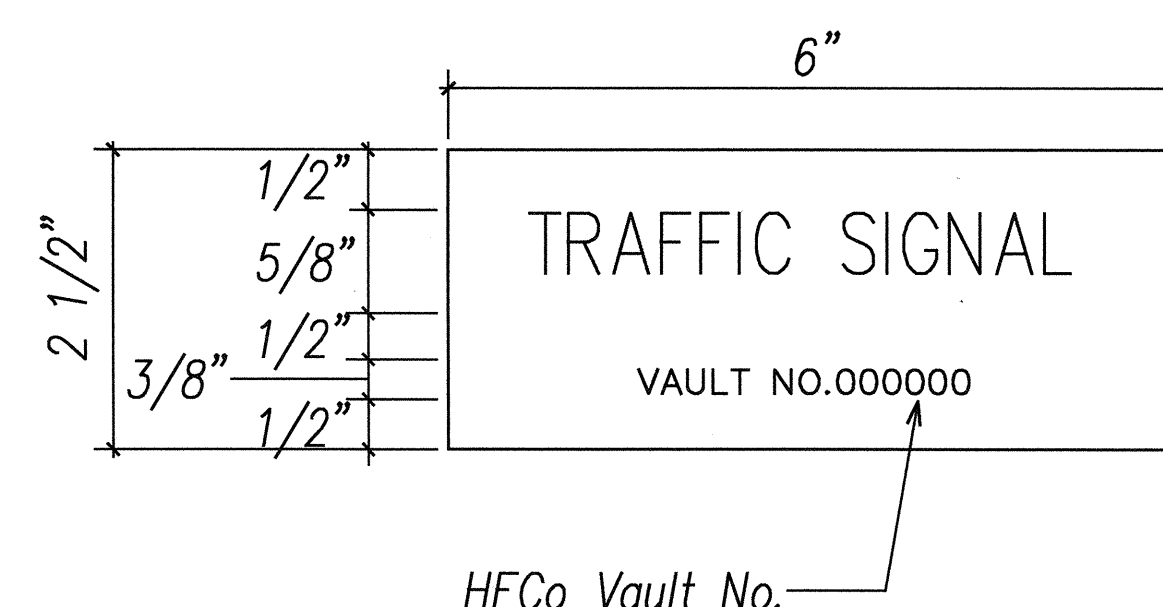


FED. ROAD DIST. NO.	STATE	FED. AID PROJ. NO.	FISCAL YEAR	SHEET NO.	TOTAL SHEETS
HAWAII	HAW.	STP-8930(2)	2007	297	331



See One-Line Diagram D/E2.16.

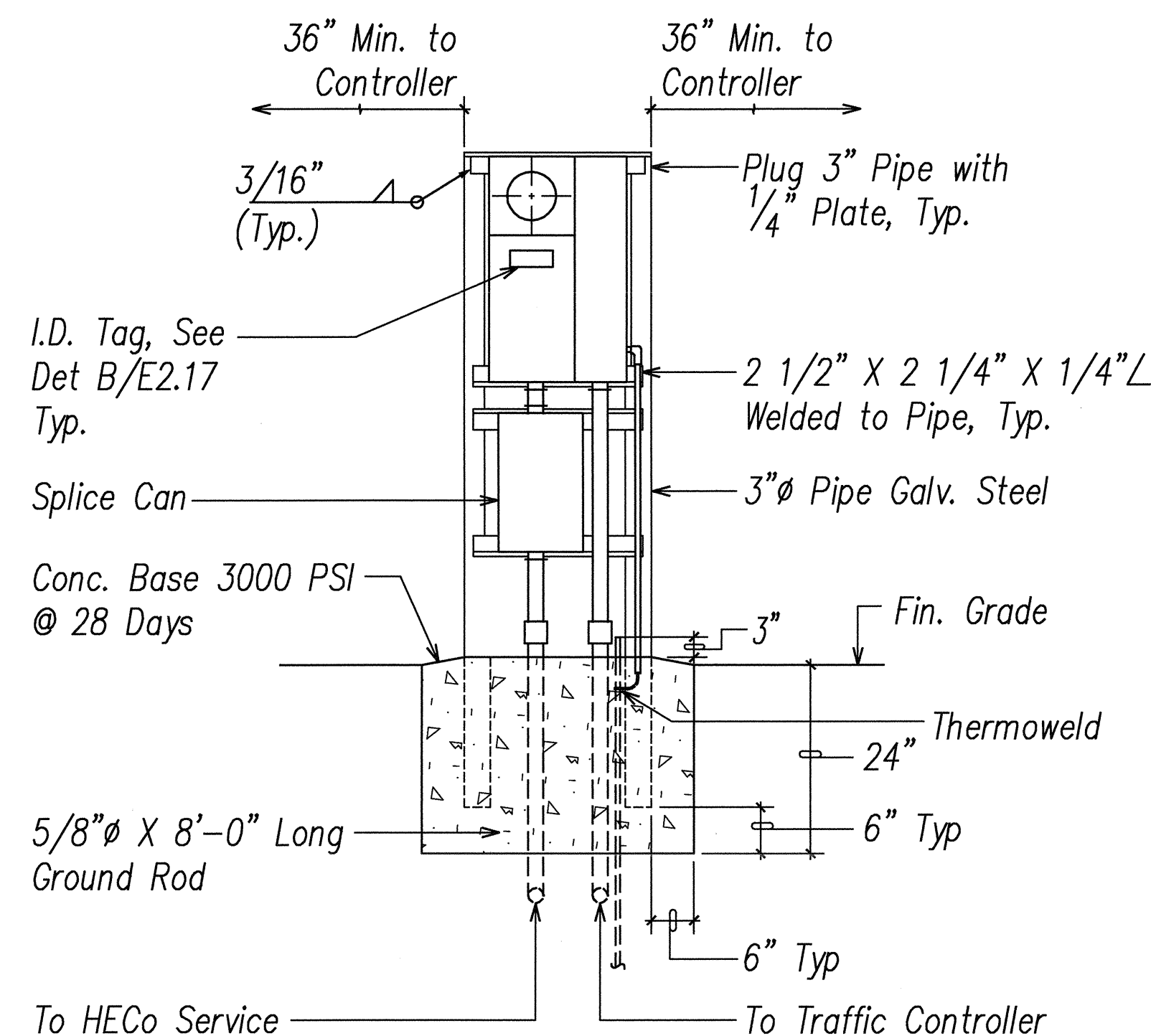
A METER INSTALLATION ON WOOD POLE
E2.16 Not to Scale



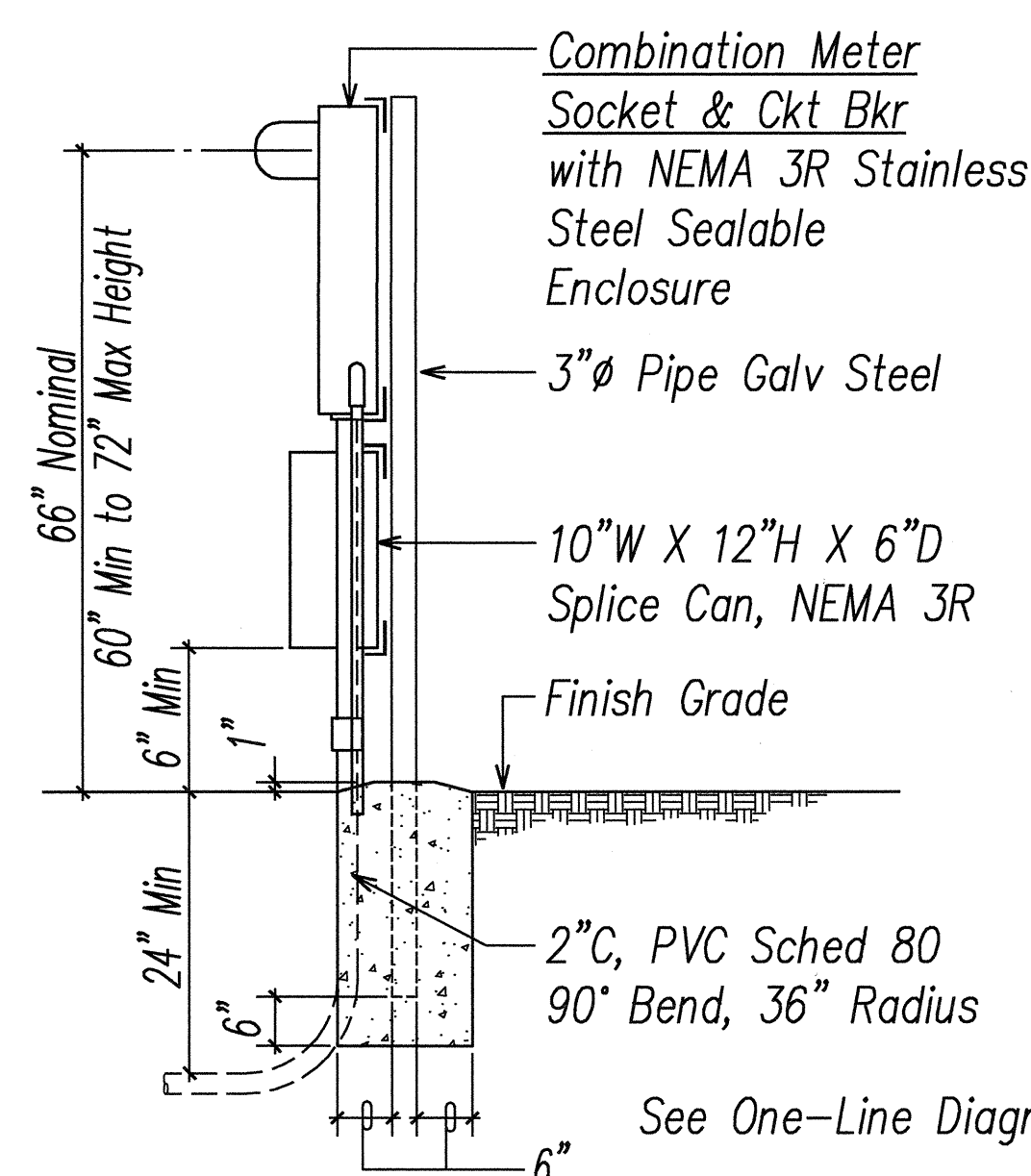
Notes:

- Use 3-ply laminated flexible plastic, black-white-black thickness: black cap sheet-0.010", white base sheet-0.052", black base sheet-0.010".
- Attach to meter socket using Scotch 3M brand Very High Bond(VHB) double coated acrylic foam tape or equivalent.
- Letters/numbers shall be 1/16" stroke, (white in color).
- Letters/numbers area inscribed by cutting through "black cap sheet" to expose white letters/numbers.

B STATE METER SOCKET ID TAG DETAIL
E2.16 Not to Scale



FRONT ELEVATION



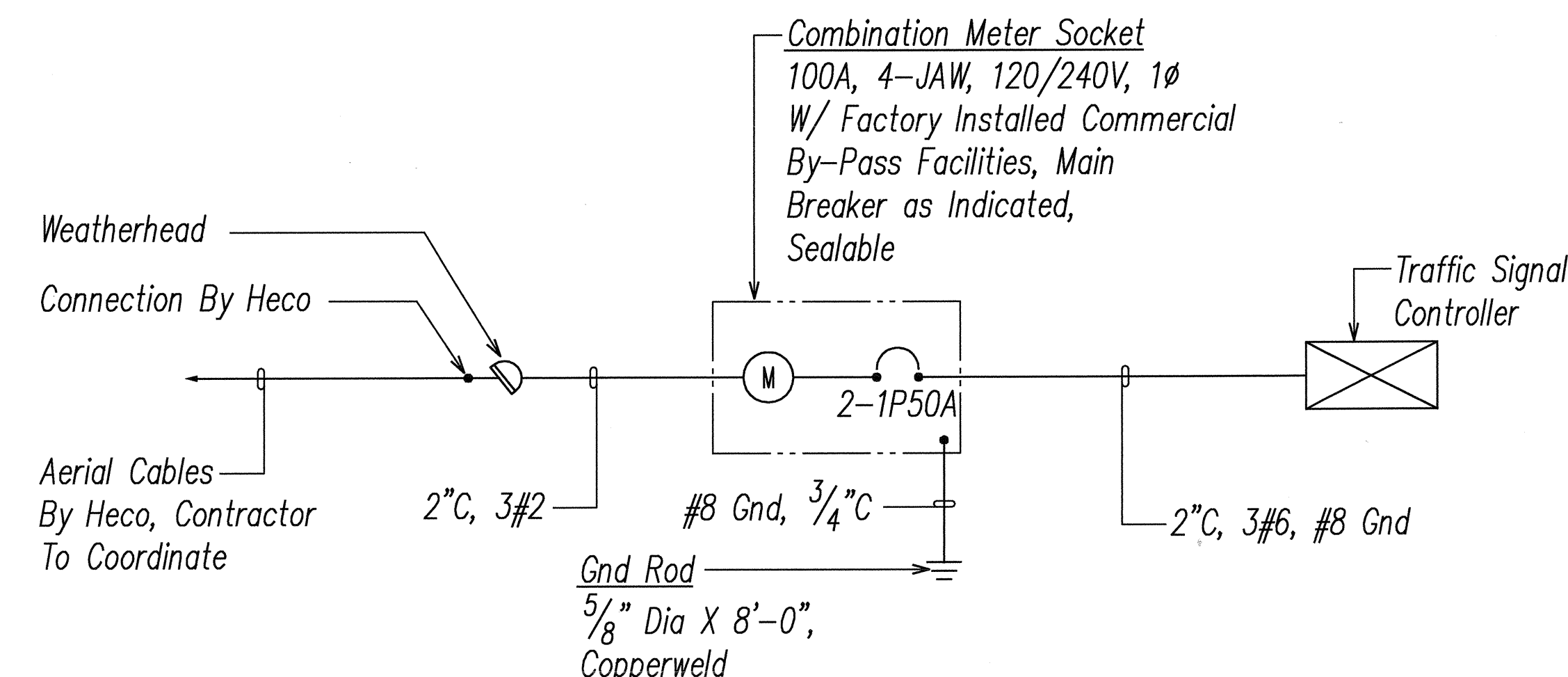
SIDE ELEVATION

See One-Line Diagram E/E2.16.

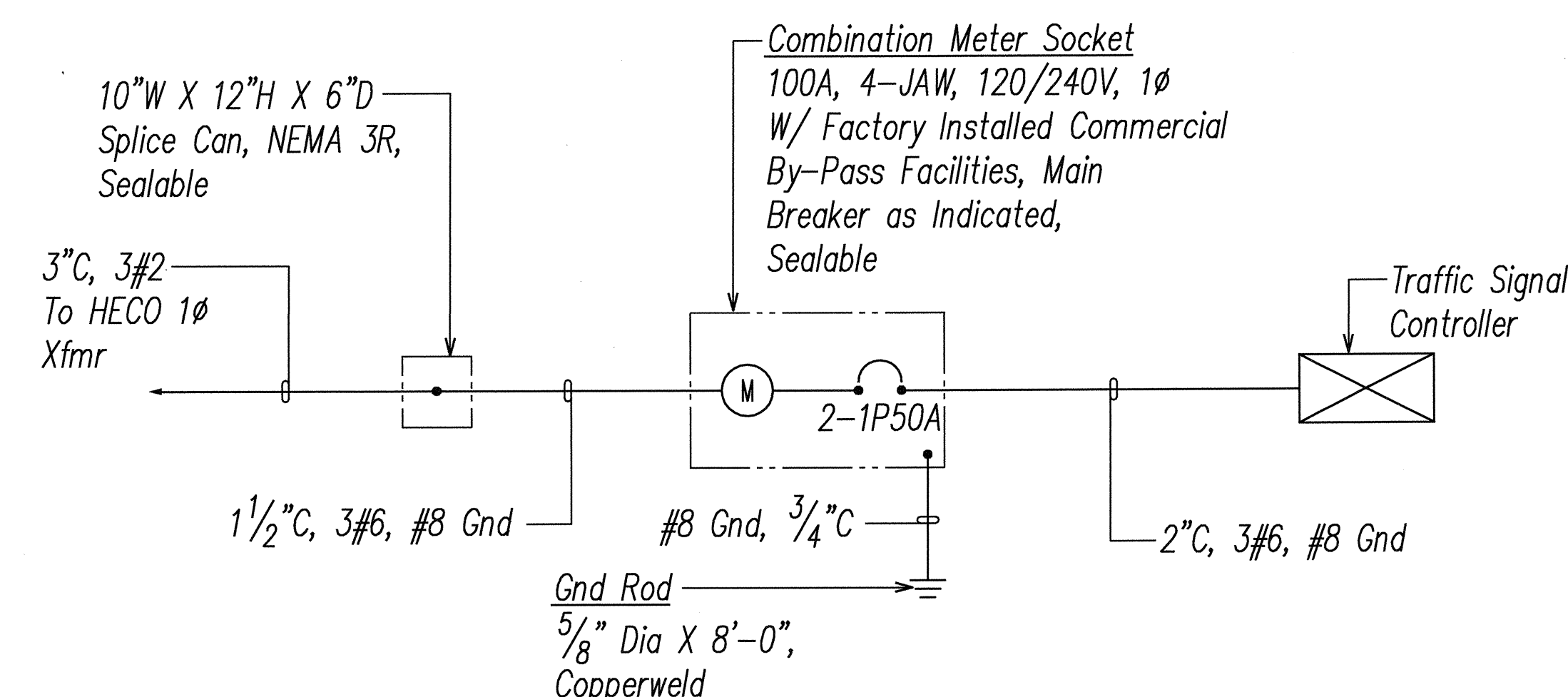
Notes:

- Contractor shall make all electrical connection to controller, provide 2-1P50A breakers, ground and 2" conduit.
- All conduits to contain a polyolefin pull line. (Jet Line Cat. #232 or Equiv)
- Pedestal shall be hot-dipped galvanized after fabrication.
- All fastening bolts, nuts & washers shall be stainless steel. Provide one coat shop primer & two coats of acrylic enamel finish, color to match controller cabinet.
- Provide 48" clearance in front of meter.
- See Pipe Guard Detail F/E2.19.

C ELECTRICAL SERVICE DETAIL
E2.16 Not to Scale



D TRAFFIC CONTROLLER ONE-LINE DIAGRAM 1
E2.16

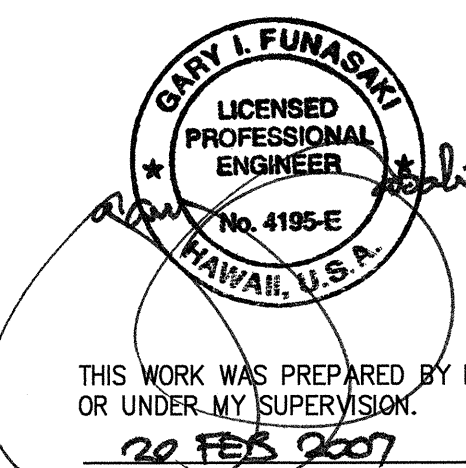


E TRAFFIC CONTROLLER ONE-LINE DIAGRAM 2 & 3
E2.16

APPROVED BY:

HAWAIIAN ELECTRIC COMPANY, INC.

DATE



STATE OF HAWAII
DEPARTMENT OF TRANSPORTATION
HIGHWAYS DIVISION

TRAFFIC SIGNAL DETAILS I

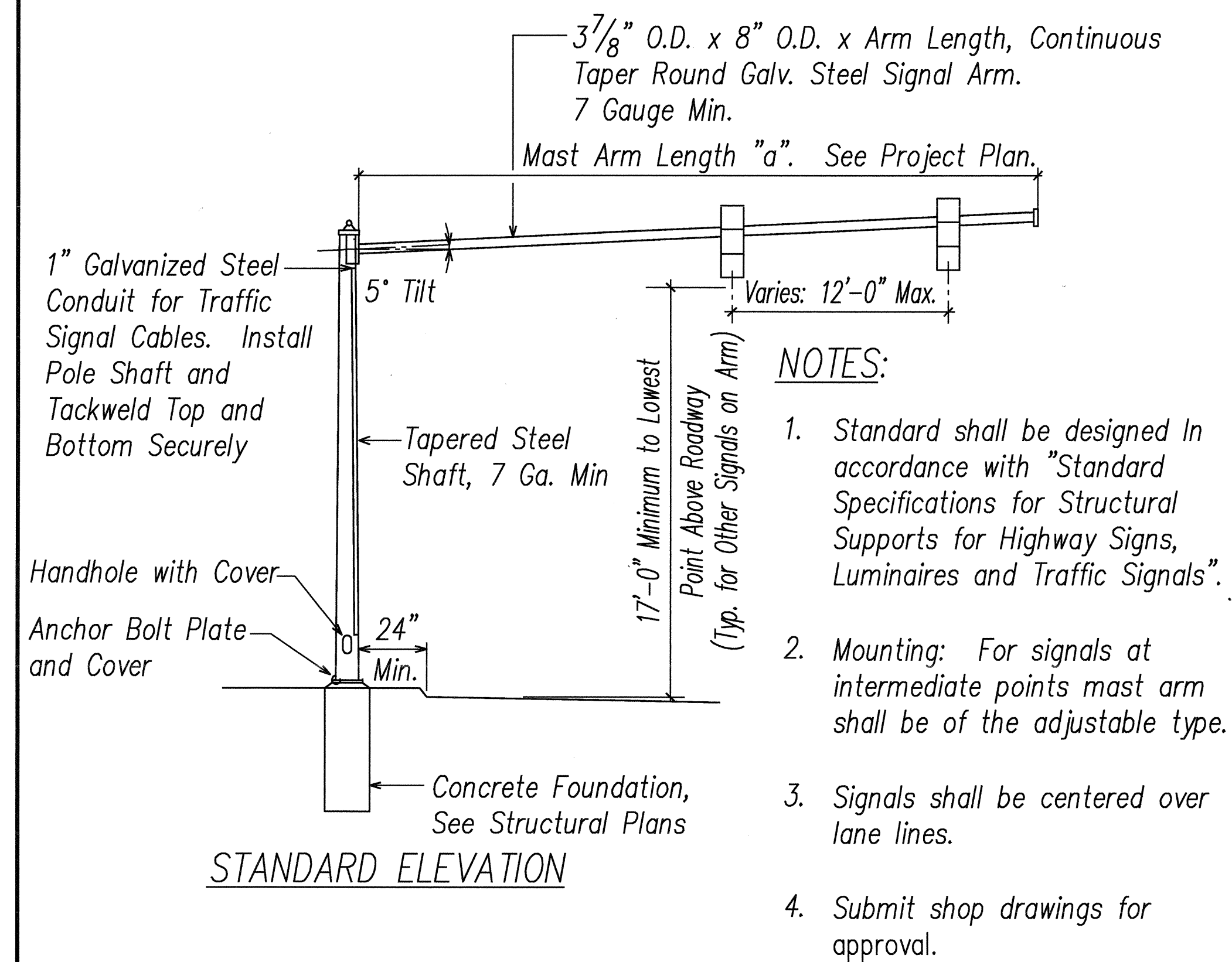
North-South Road
Phase 1B
F.A.I. Proj. No. STP-8930(2)

Scale: AS NOTED Date: Feb 21, 2007

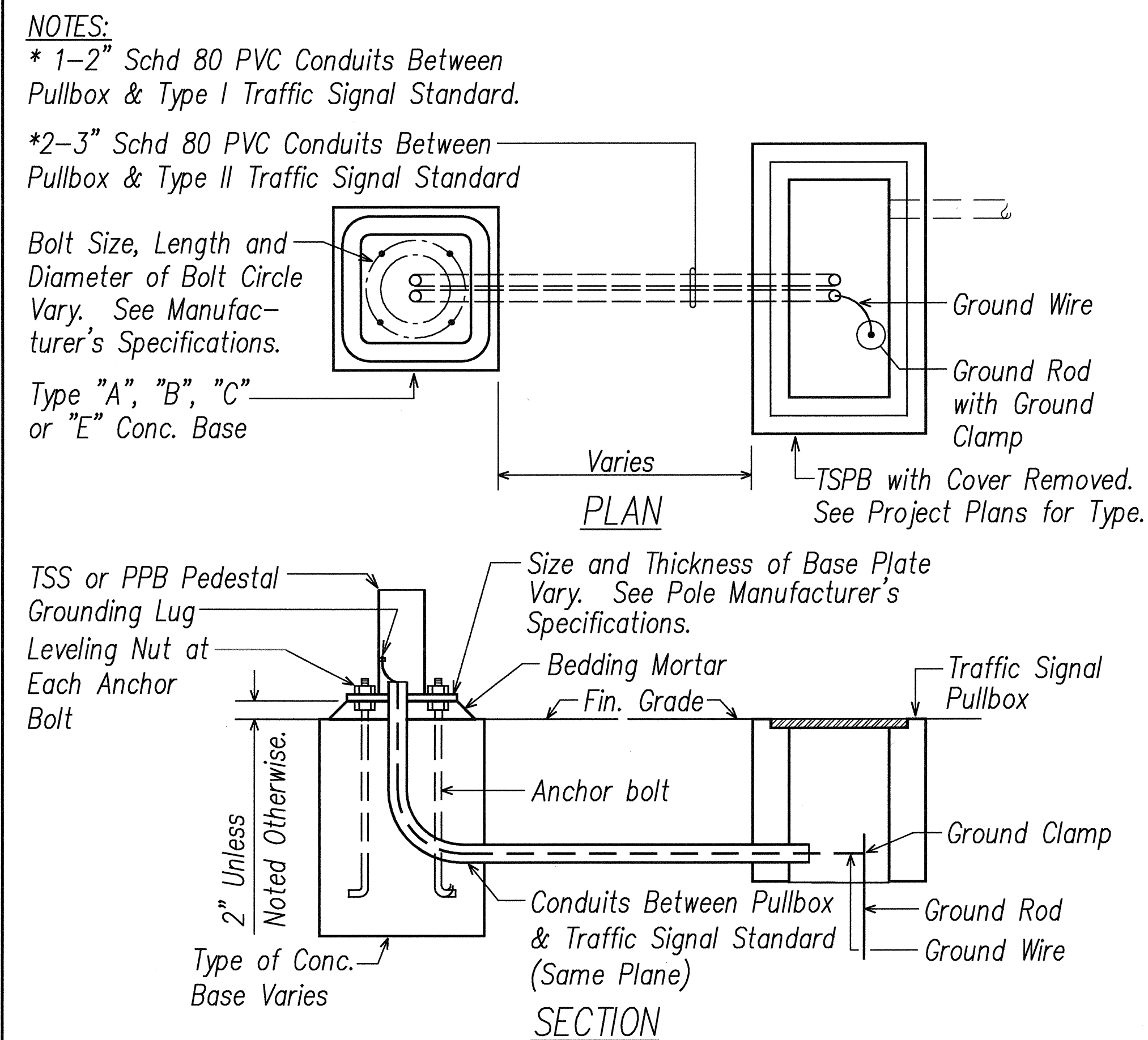
SHEET No. E2.16 OF 62 SHEETS

DATE	REVISION

FED. ROAD DIST. NO.	STATE	FED. AID PROJ. NO.	FISCAL YEAR	SHEET NO.	TOTAL SHEETS
HAWAII	HAW.	STP-8930(2)	2007	298	331



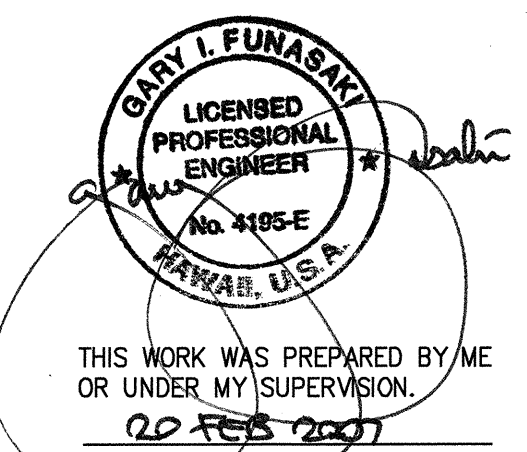
TYPE II TRAFFIC SIGNAL STANDARD



TYPICAL STANDARD & PEDESTAL DETAIL

ORIGINAL PLAN	SURVEY PLOTTED BY _____	DATE _____
NOTE BOOK	DRAWN BY _____	_____
	TRACED BY _____	_____
	DESIGNED BY _____	_____
	QUANTITIES BY _____	_____
	CHECKED BY _____	_____
to _____		

LAST SAVE: 02/20/07 @ 09:17:02 BY: RN PLOT SC 1'0"=1'



STATE OF HAWAII
DEPARTMENT OF TRANSPORTATION
HIGHWAYS DIVISION

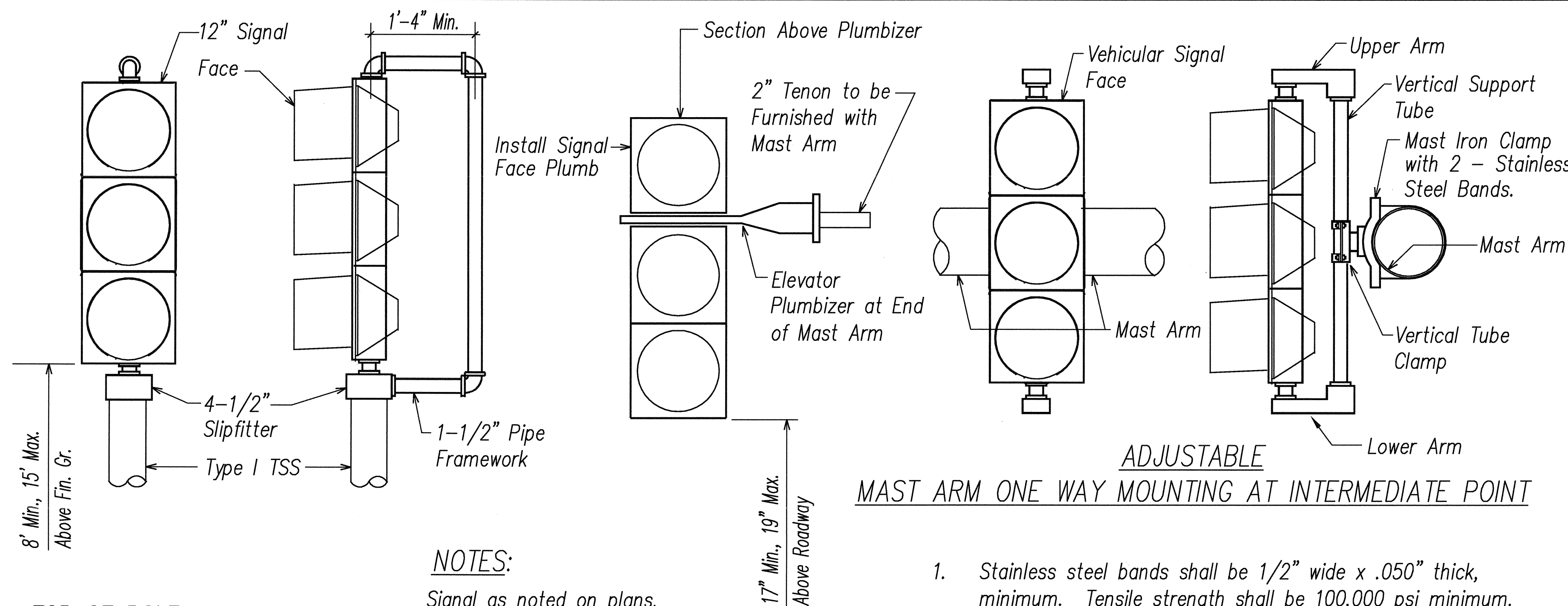
TRAFFIC SIGNAL DETAILS II

North-South Road
Phase 1B
F.A.I. Proj. No. STP-8930(2)

Scale: AS NOTED Date: Feb 21, 2007

SHEET No. E2.17 OF 62 SHEETS

FED. ROAD DIST. NO.	STATE	FED. AID PROJ. NO.	FISCAL YEAR	SHEET NO.	TOTAL SHEETS
HAWAII	HAW.	STP-8930(2)	2007	299	331



TOP OF POLE -
ONE WAY MOUNTING

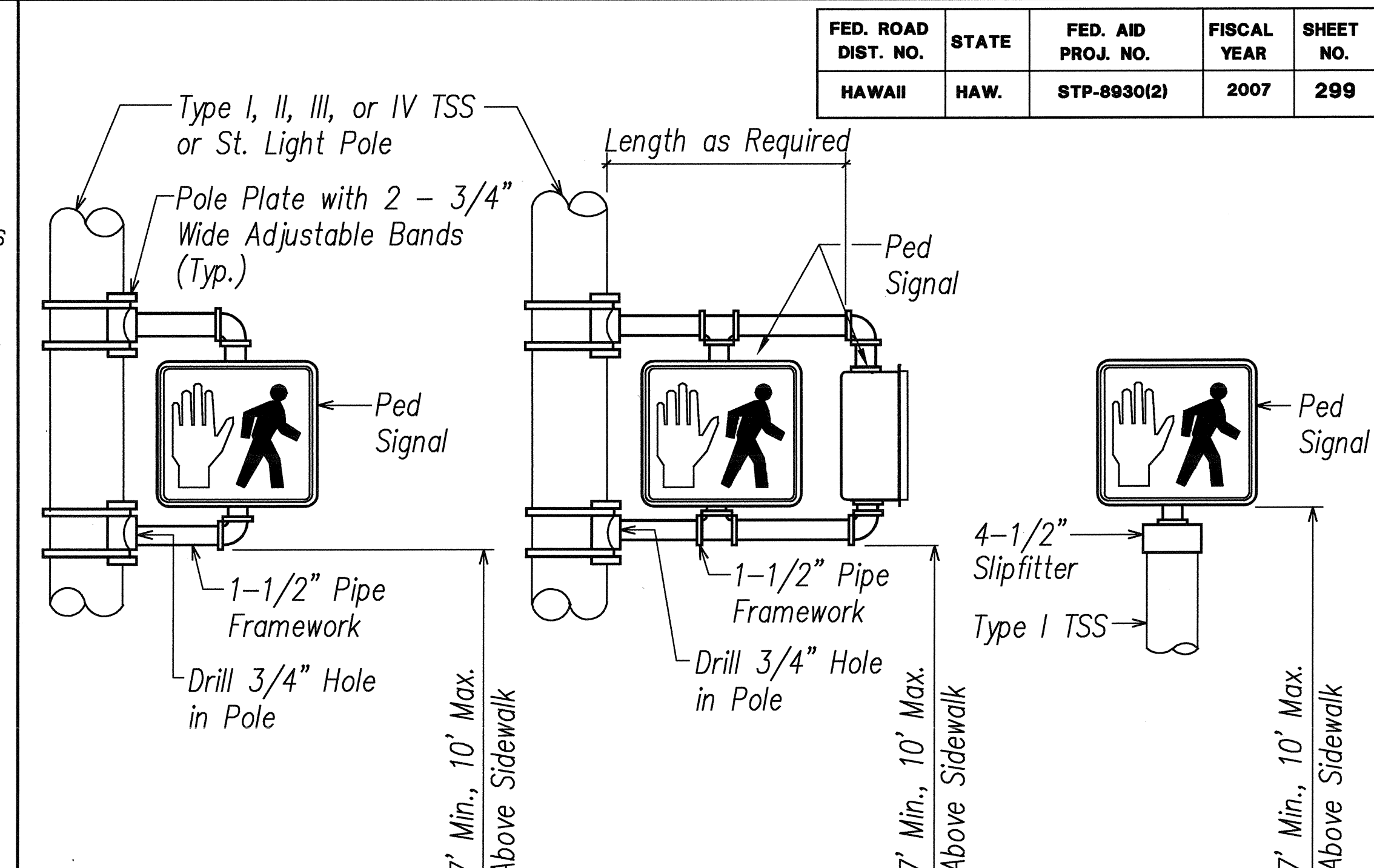
NOTES:
Signal as noted on plans.

MAST ARM - ONE WAY MOUNTING AT ENDS
ONE WAY MOUNTING AT ENDS

A VEHICULAR SIGNAL MOUNTING DETAILS

E2.18 N.T.S.

1. Stainless steel bands shall be 1/2" wide x .050" thick, minimum. Tensile strength shall be 100,000 psi minimum.
2. Upper arm, lower arm and vertical support tube shall be of 356 cast aluminum.
3. All wiring shall be concealed.
4. Vertical tube clamp shall be of malleable iron, grade 32510.
5. All aluminum parts shall have an Alodine 1200 finish.



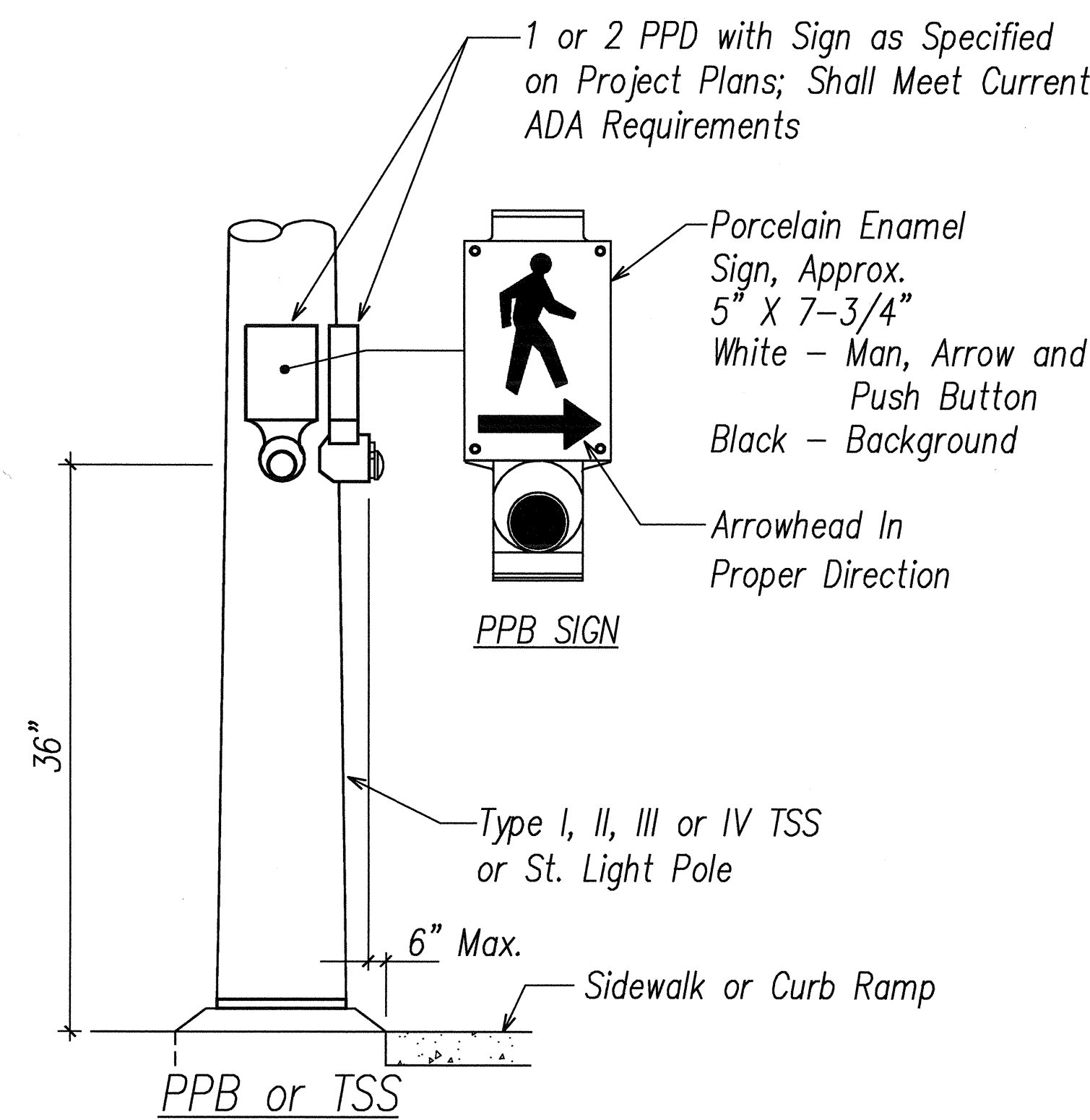
BRACKET MOUNT -
ONE WAY

BRACKET MOUNT -
TWO WAY

TOP OF POLE -
ONE WAY

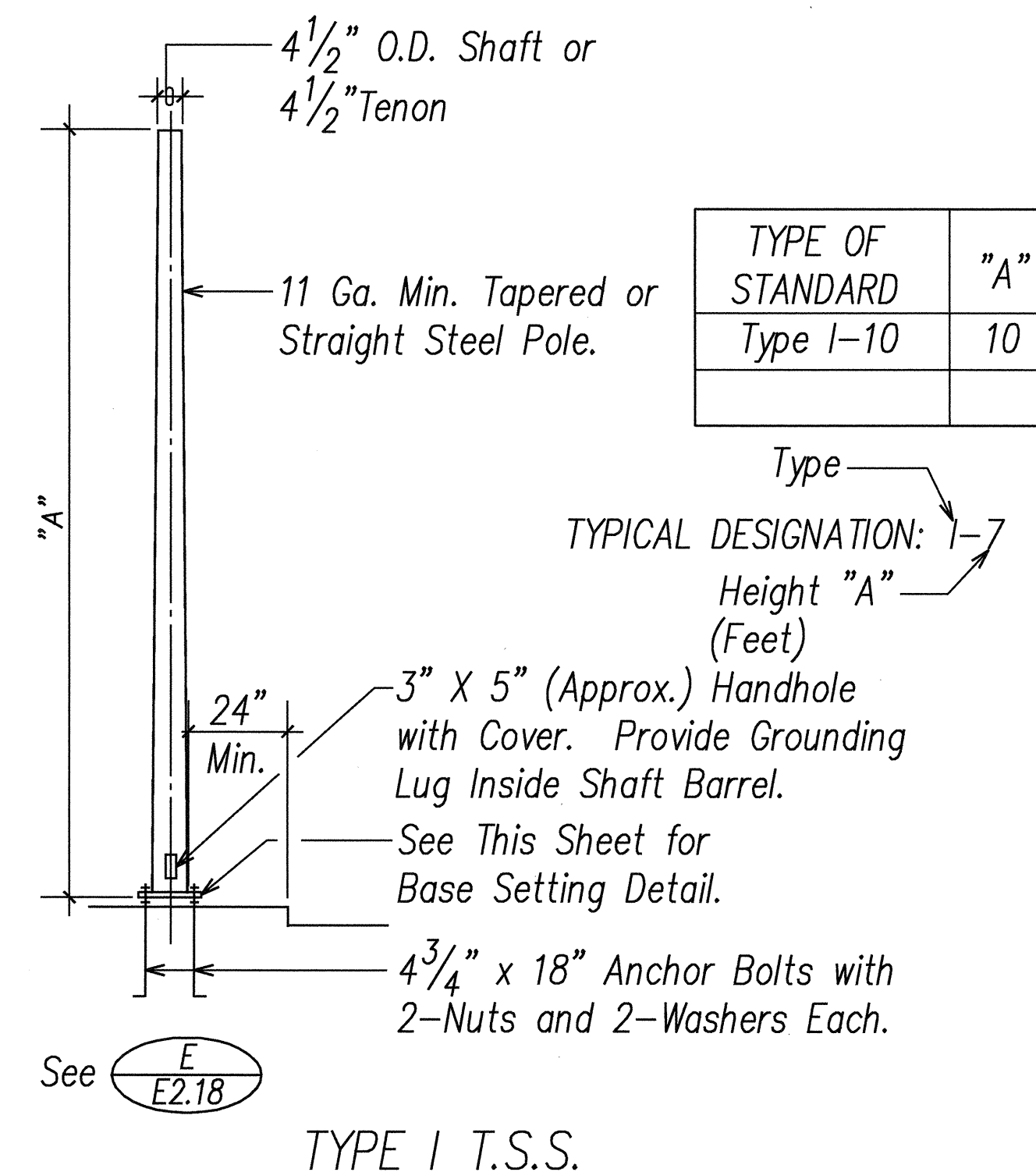
B PEDESTRIAN SIGNAL MOUNTINGS

E2.18 N.T.S.



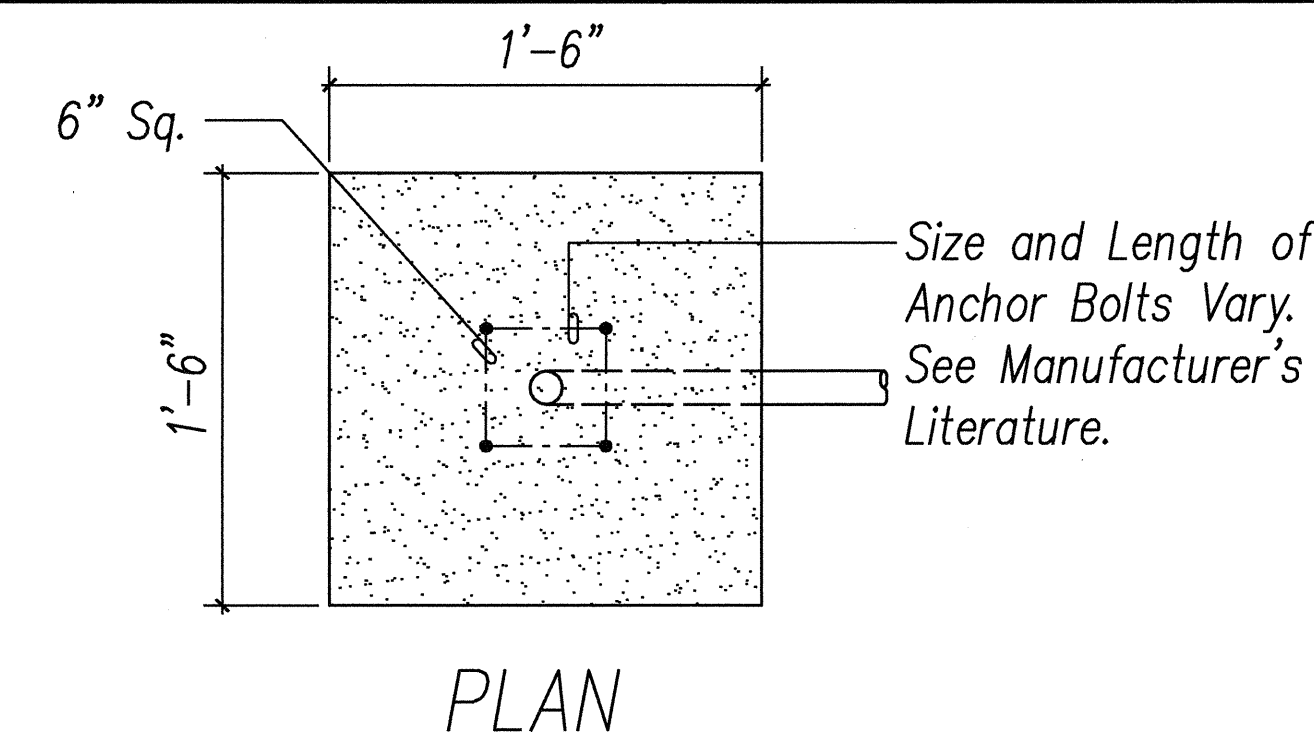
C PEDESTRIAN PUSHBUTTON DETAILS

E2.18 N.T.S.



D TYPICAL STANDARD AND PEDESTAL INSTALLATION

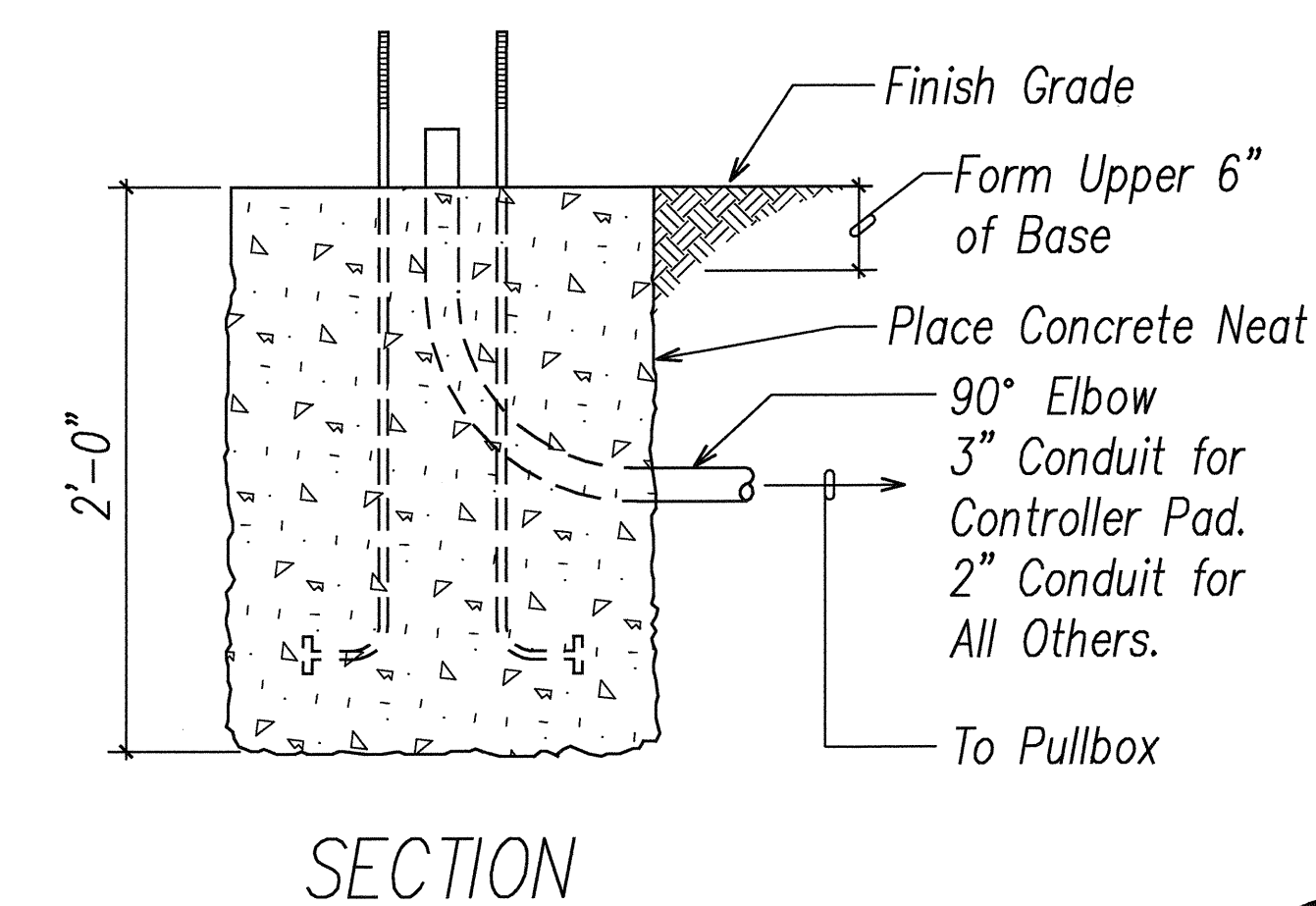
E2.18 N.T.S.



- NOTES:
1. Concrete shall be Class "B".
 2. Type "A" concrete base shall be used for Type I-10, I-7 and I-3 standards.
 3. Conduit bend is incidental to concrete base construction.

E TYPE "A" CONCRETE BASE

E2.18 N.T.S.

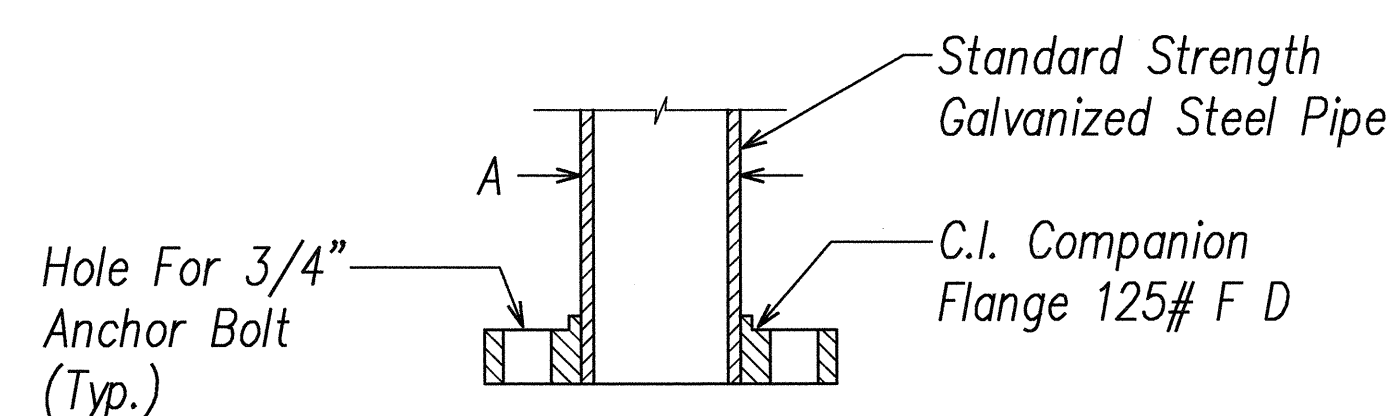
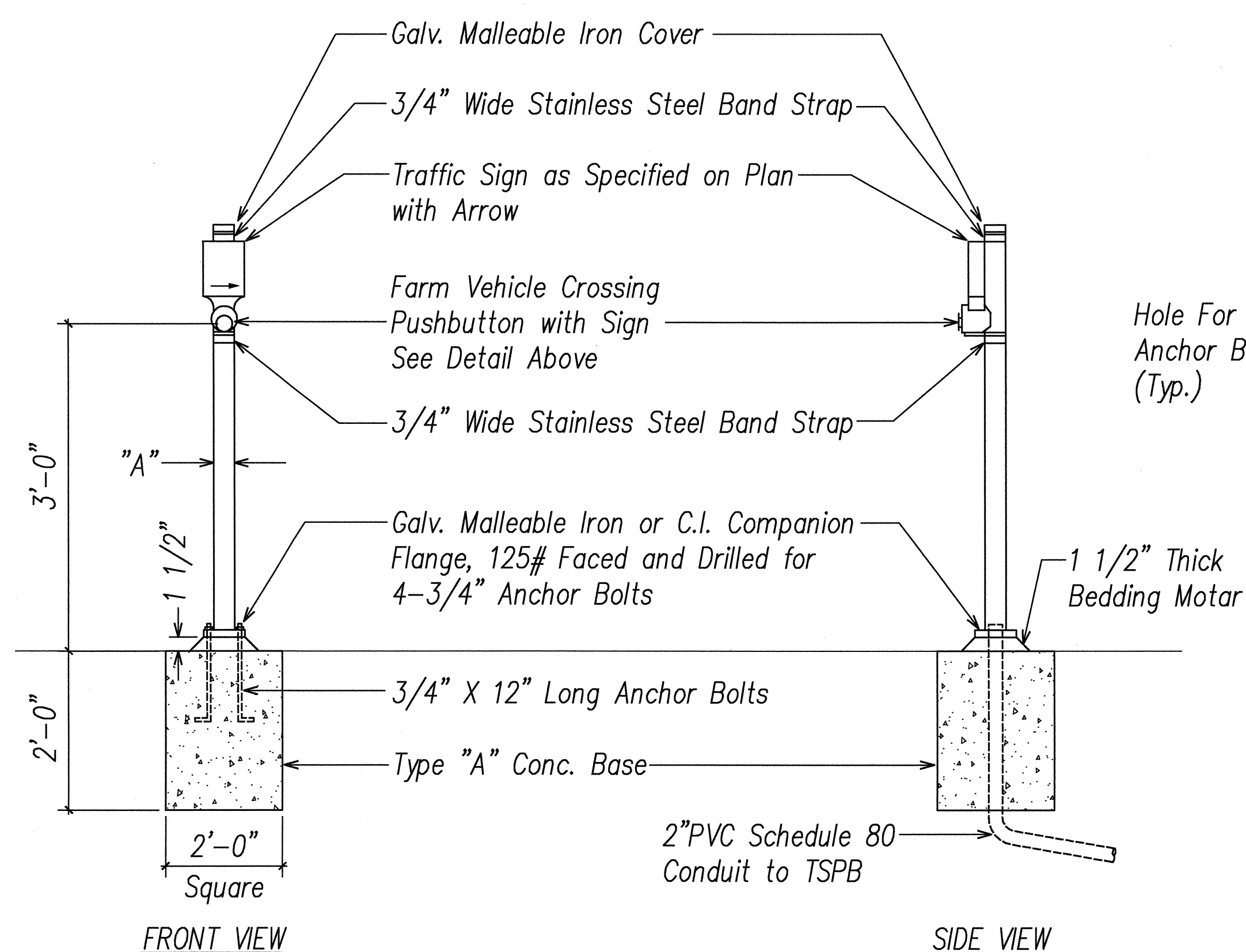
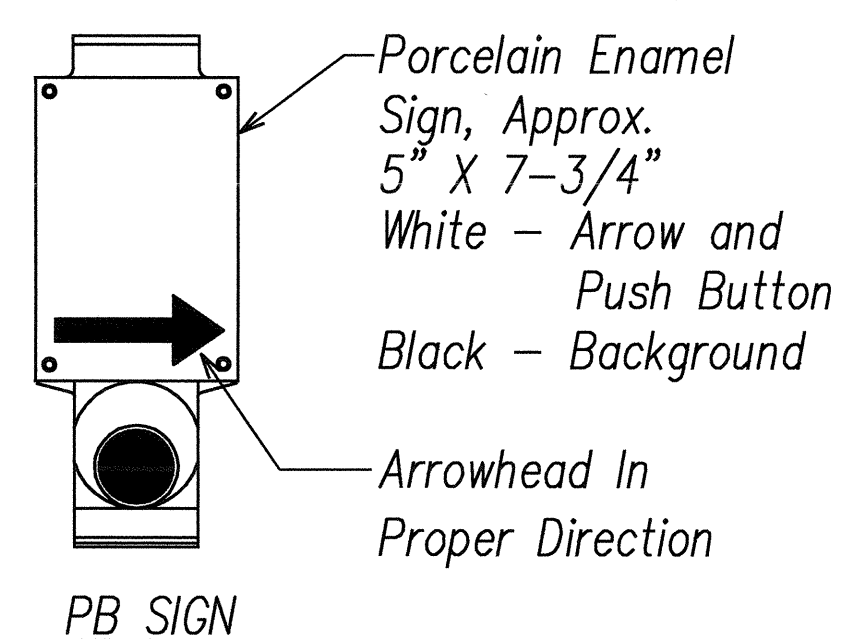


THIS WORK WAS PREPARED BY ME OR UNDER MY SUPERVISION.
DATE: FEB 21, 2007

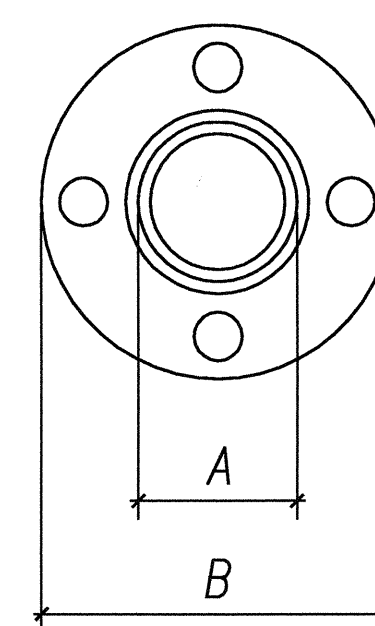
STATE OF HAWAII
DEPARTMENT OF TRANSPORTATION
HIGHWAYS DIVISION
TRAFFIC SIGNAL DETAILS III
North-South Road
Phase 1B
F.A.I. Proj. No. STP-8930(2)
Scale: AS NOTED Date: Feb 21, 2007
SHEET No. E-2.18 OF 62 SHEETS

DATE	REVISION

FED. ROAD DIST. NO.	STATE	FED. AID PROJ. NO.	FISCAL YEAR	SHEET NO.	TOTAL SHEETS
HAWAII	HAW.	STP-8930(2)	2007	300	331



SECTION

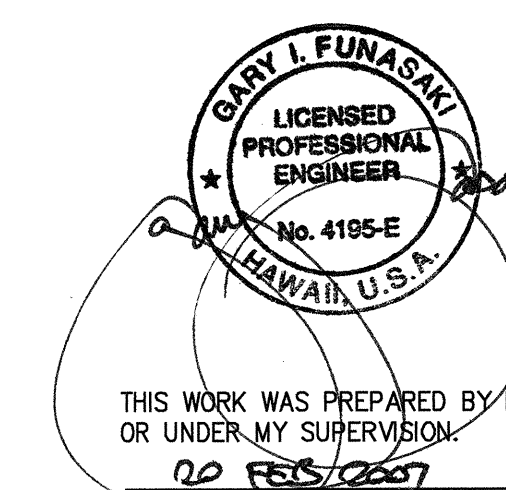


TOP VIEW

NOTE:

1. Conduits shall Protrude 2" Max above Finished Surface of Foundation.
2. Conduits Shall slope away from Post Foundation.

DATA TABLE FOR PB POST		
AMOUNT OF PB	DIMENSIONS	
	A	B
1	3 1/2"	8"
2-3	4 1/2"	9"



STATE OF HAWAII
DEPARTMENT OF TRANSPORTATION
HIGHWAYS DIVISION

TRAFFIC SIGNAL DETAILS IV

North-South Road
Phase 1B
F.A.I. Proj. No. STP-8930(2)

Scale: AS NOTED Date: Feb 21, 2007

SHEET No. E2.19 OF 62 SHEETS