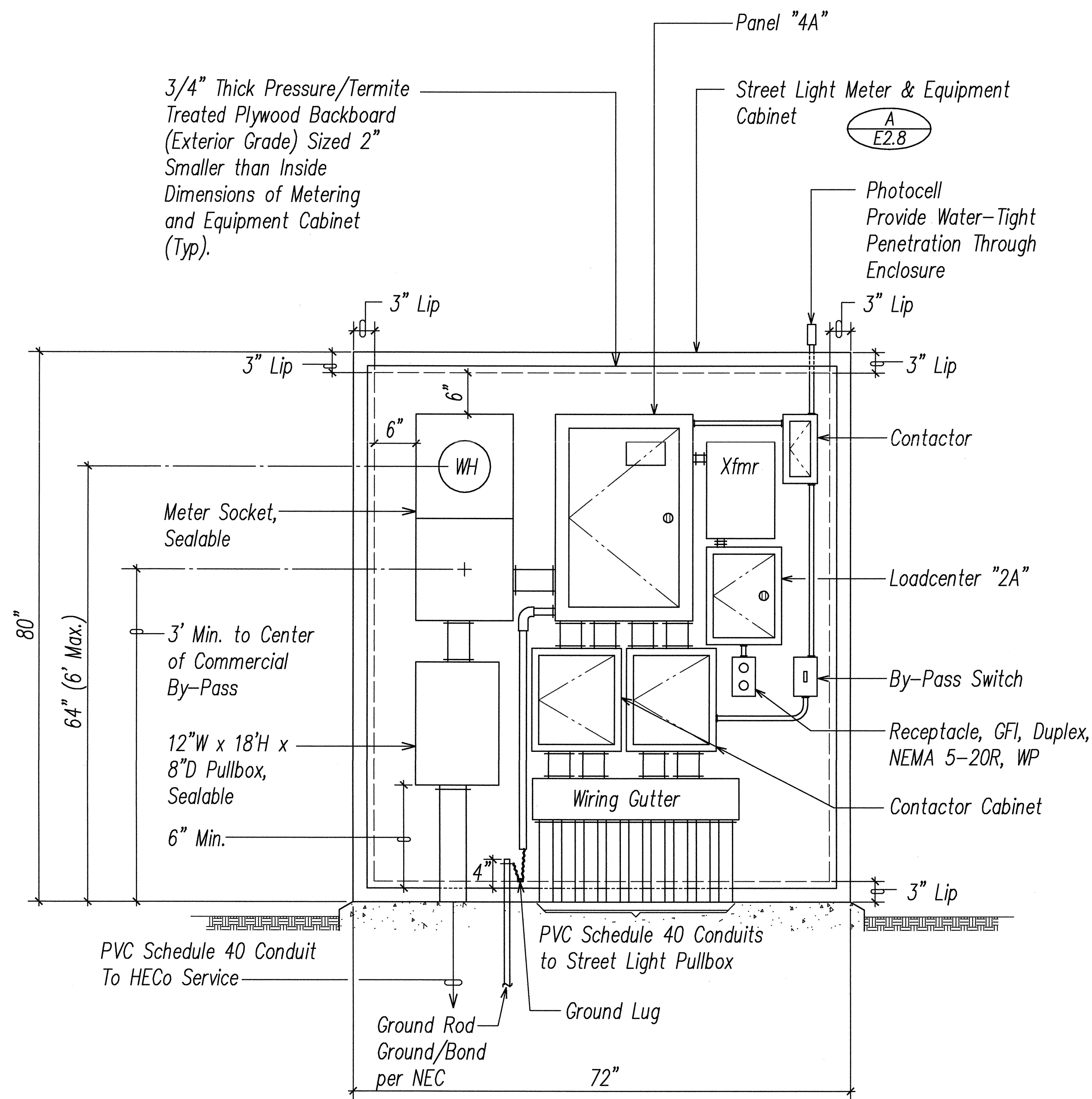


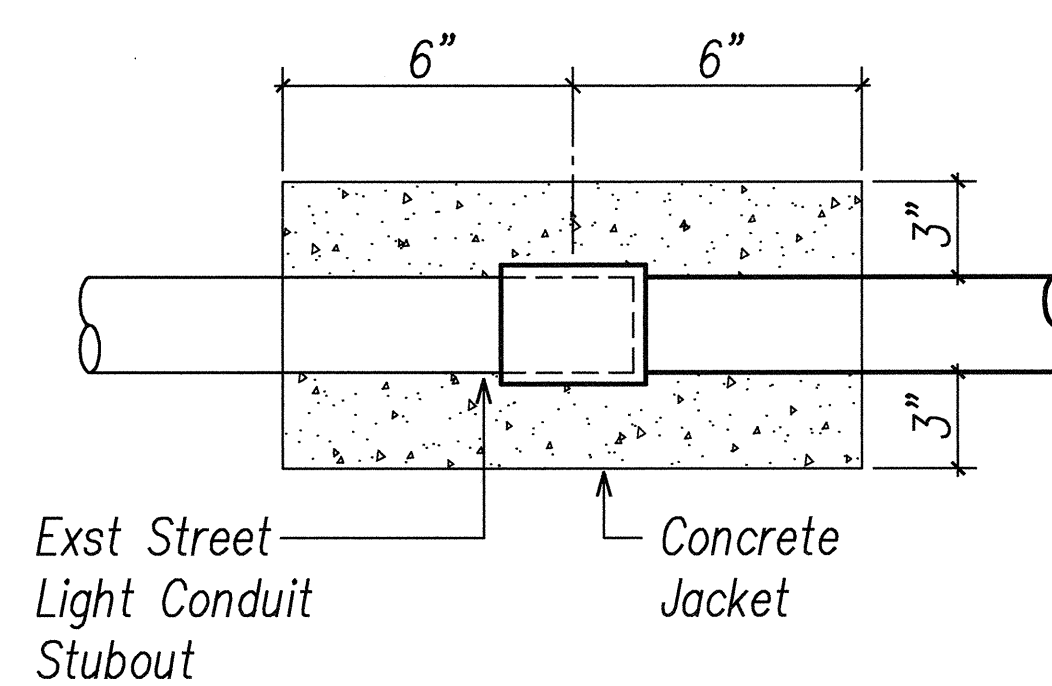
FED. ROAD DIST. NO.	STATE	FED. AID PROJ. NO.	FISCAL YEAR	SHEET NO.	TOTAL SHEETS
HAWAII	HAW.	STP-8930(2)	2007	290	331



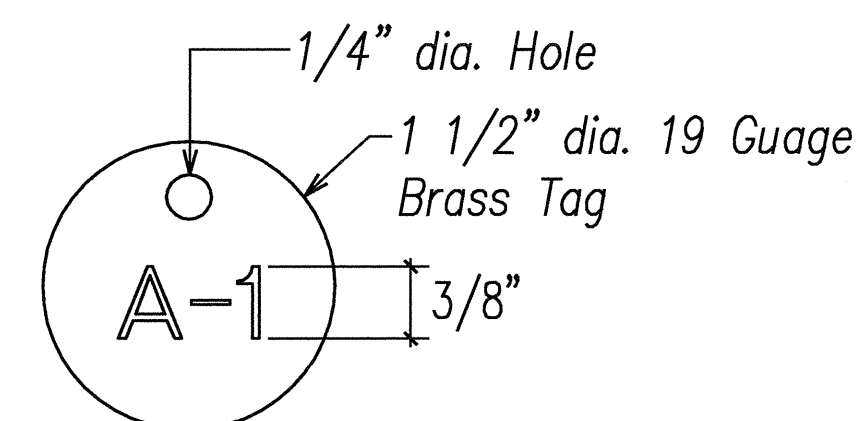
Notes:

1. See One-line Diagram Sheet E3.1 for System "A" and Sheet E3.2 for System "B".
2. Equipment elevation for Street Lighting System "B" is similar except a mirror image.

**A**  
E2.9 **STREET LIGHT SYSTEM "A" EQUIPMENT ELEVATION**  
SCALE: 1"=1'-0"



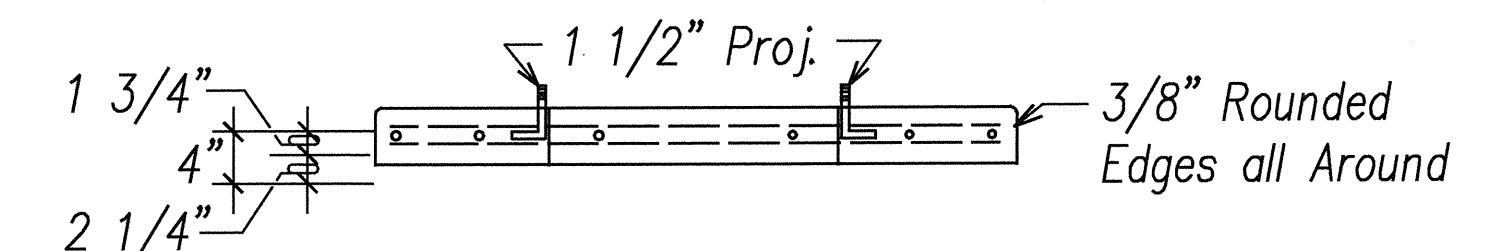
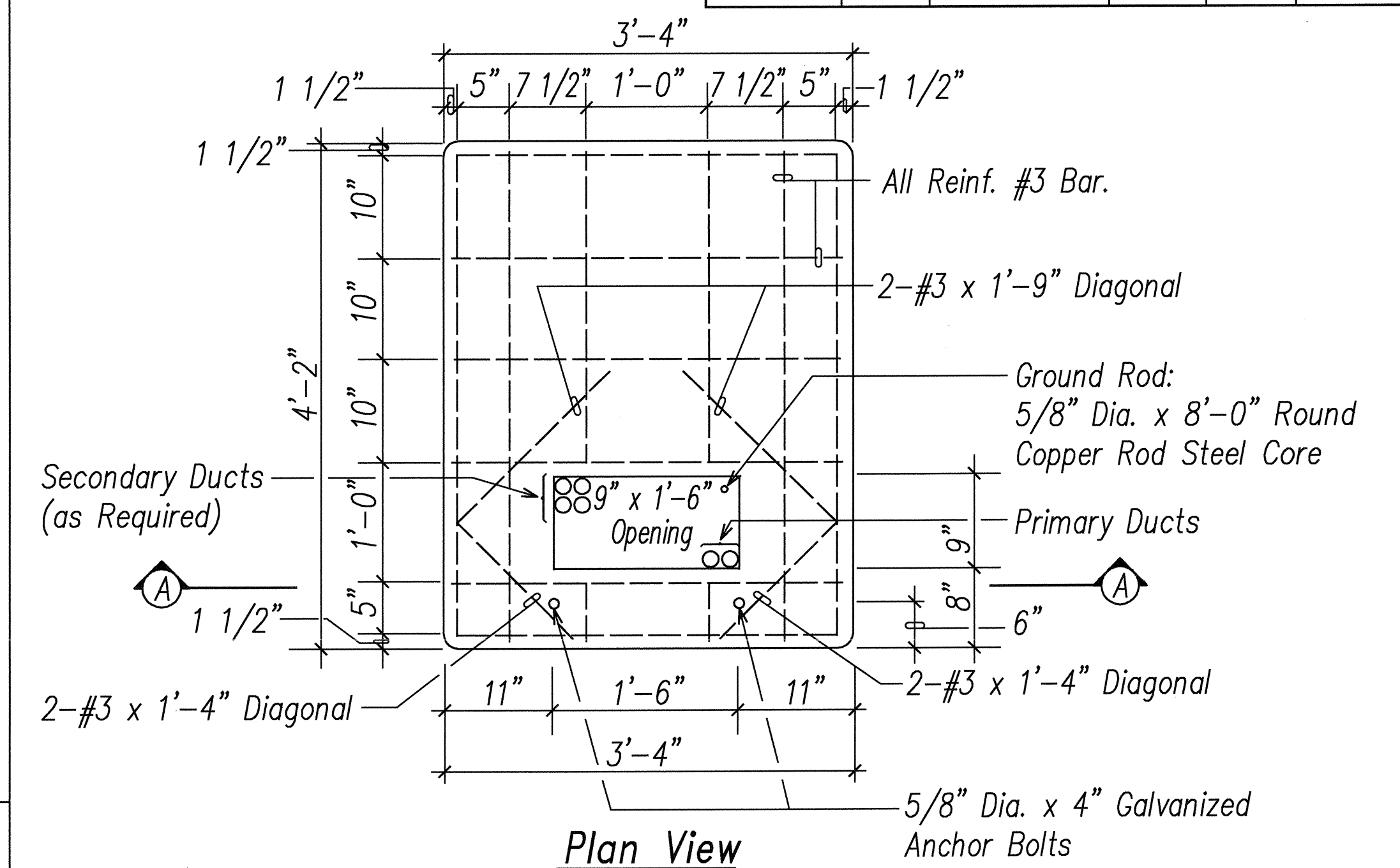
**B**  
E2.9 **TYP CONNECTION TO EXST CONDUIT STUBOUT DETAIL**  
NOT TO SCALE



NOTES:

1. Number Size shall be 3/8" high and Punched on Brass Tag.
2. Attach to Circuit Cables with Nylon Weather Resistant Locking Cable Ties, 3/16" wide.

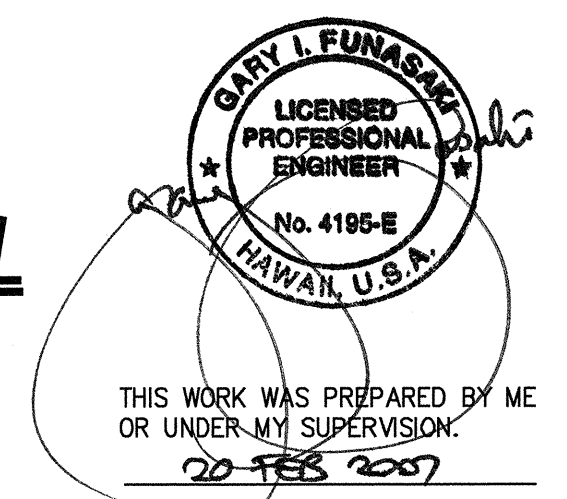
**C**  
E2.9 **STREET LIGHT CIRCUIT CABLE I.D. TAG DETAIL**  
NOT TO SCALE



Notes:

1. Compressive strength of concrete: 3000 PSI in 28 days.
2. Reinforcing: Clean and new round deformed bar.
3. Cure concrete by approved method.
4. Top of concrete pad to be smooth, true and level. Other exposed surfaces to be smooth and free from defects.
5. Contractor has option of furnishing cast-in-place or precast.
6. Reinforced concrete transformer pad to be constructed as shown on this sheet & HECO Standard Drawing No. 011249 and No. 30-5001.
7. For use with 1 phase padmounted transformers per HECO Standard Drawing No. 23-1022.

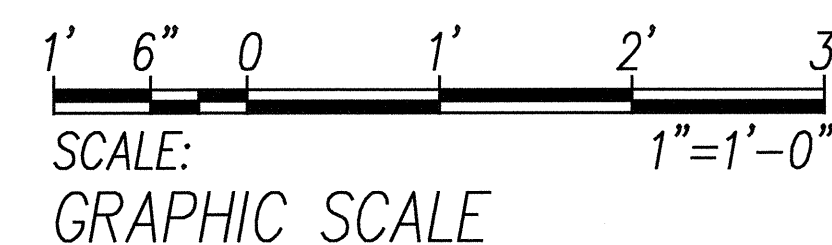
**D**  
E2.9 **CONCRETE TRANSFORMER PAD DETAIL**  
**SINGLE PHASE, 25-167 KVA**  
Not to Scale



APPROVED BY:

HAWAIIAN ELECTRIC COMPANY, INC.

DATE



DATE	REVISION

STATE OF HAWAII DEPARTMENT OF TRANSPORTATION HIGHWAYS DIVISION	
STREET LIGHT EQUIPMENT ELEVATION	
North-South Road Phase 1B F.A.I. Proj. No. STP-8930(2)	
Scale: AS NOTED	Date: Feb 21, 2007
SHEET No. E2.9 OF 62 SHEETS	

SURVEY PLOTTED BY:	DATE:
DRAWN BY:	
DESIGNED BY:	
QUANTITIES BY:	
CHECKED BY:	
LAST DATE OF REVISION:	
BY:	