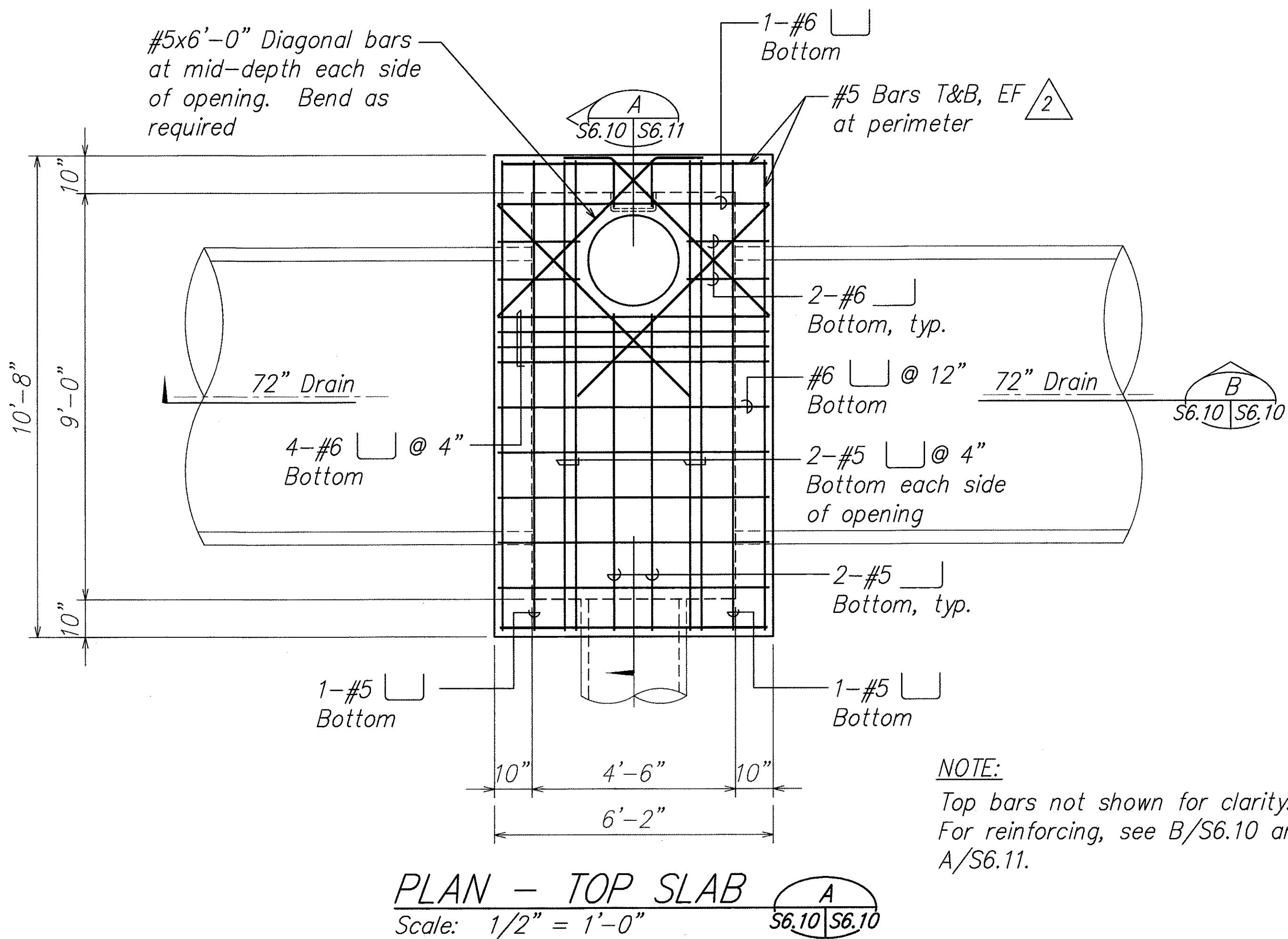
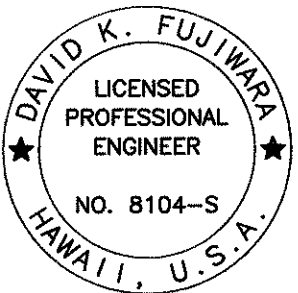
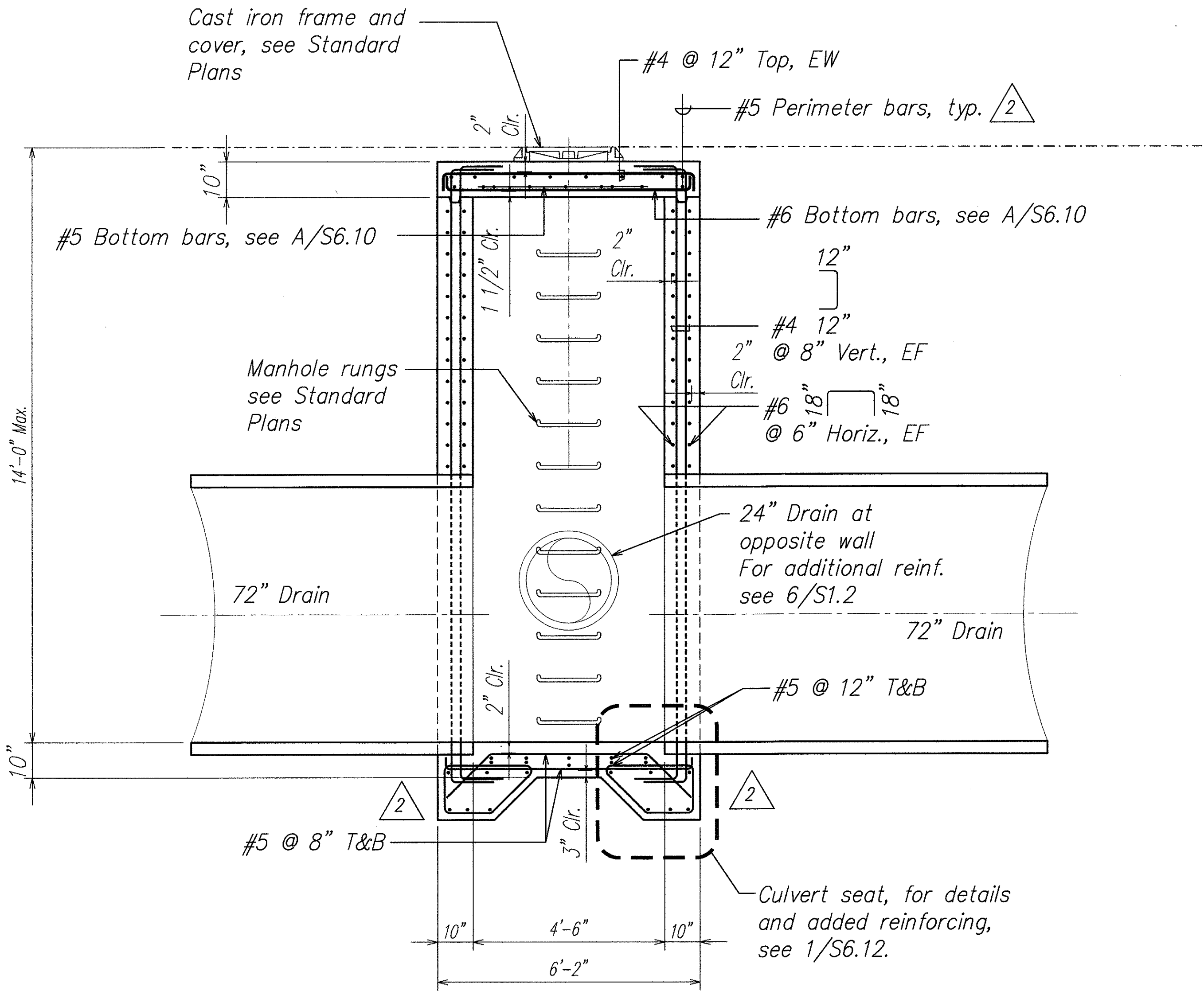


FED. ROAD DIST. NO.	STATE	FED. AID PROJ. NO.	FISCAL YEAR	SHEET NO.	TOTAL SHEETS
HAWAII	HAW.	STP-8930(2)	2007	ADD. 245	331



Note:
See Civil drawings for location.

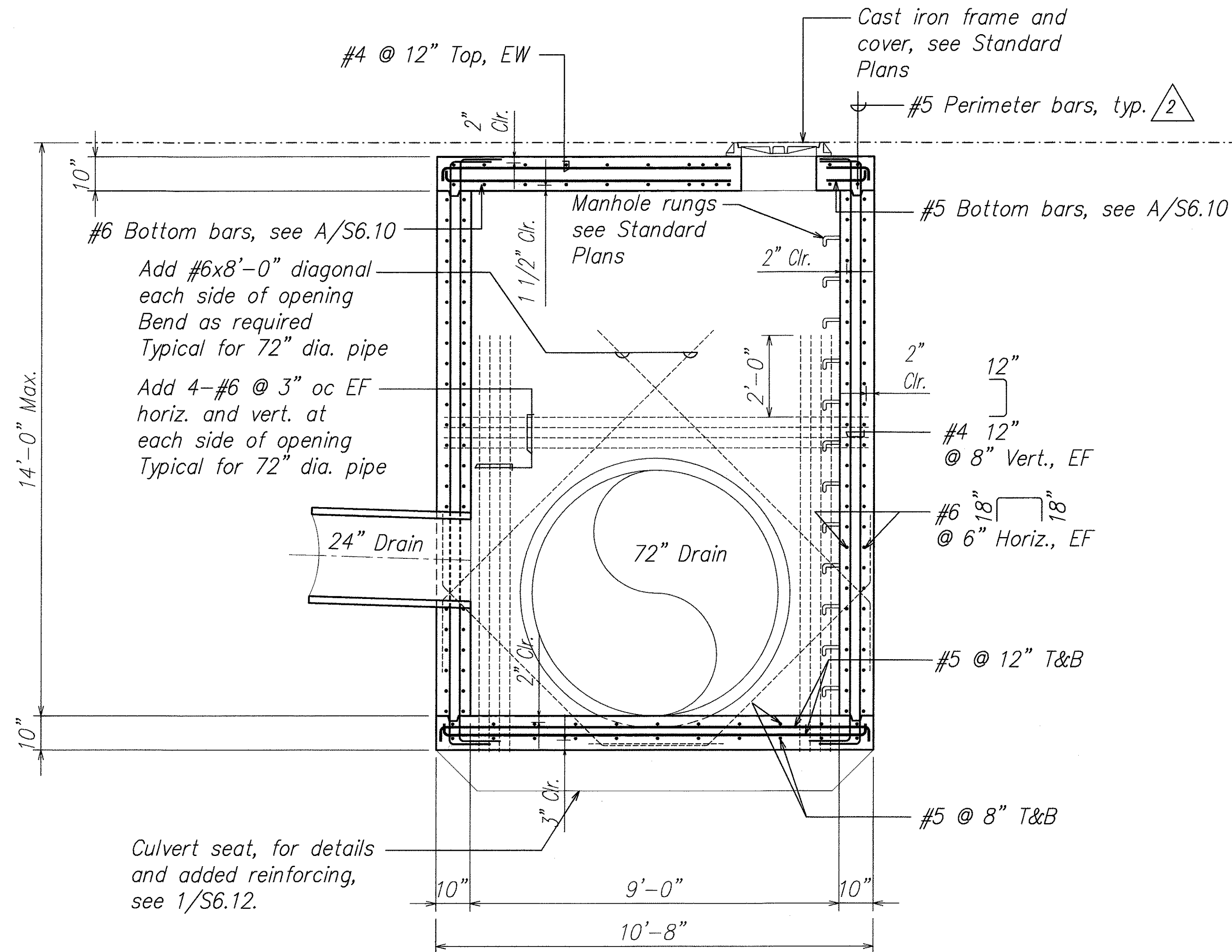


THIS WORK WAS PREPARED BY ME OR UNDER MY SUPERVISION.

Signature: David K. Fujiwara
EXPIRATION DATE OF THE LICENSE: 4-30-08

5/11/07	2	Revised Reinforcing
DATE	REVISION	
<div>STATE OF HAWAII</div> <div>DEPARTMENT OF TRANSPORTATION</div> <div>HIGHWAYS DIVISION</div> <div><u>SPECIAL DRAIN MANHOLE #2</u></div> <div><u>PLAN AND SECTION</u></div> <div><u>North-South Road</u></div> <div><u>Phase 1B</u></div> <div><u>F.A.I. Proj. No. STP-8930(2)</u></div> <div>Scale: As Noted</div> <div>Date: Feb. 21, 2007</div> <div>SHEET No. S6.10 OF 78 SHEETS</div>		

FED. ROAD DIST. NO.	STATE	FED. AID PROJ. NO.	FISCAL YEAR	SHEET NO.	TOTAL SHEETS
HAWAII	HAW.	STP-8930(2)	2007	ADD. 246	331



SECTION
Scale: 1/2" = 1'-0" A
S6.10 S6.11

ORIGINAL PLAN	SURVEY PLOTTED BY	DATE
NOTE BOOK	DRAWN BY	
No.	TRACED BY	
	DESIGNED BY	
	CHECKED BY	

DAVID K. FUJIMURA
LICENSED PROFESSIONAL ENGINEER
NO. 8104-S
HAWAII, U.S.A.

THIS WORK WAS PREPARED BY
ME OR UNDER MY SUPERVISION.

David K. Fujimura
SIGNATURE

4-30-08
EXPIRATION DATE OF THE LICENSE

5/11/07	2 Revised Reinforcing
DATE	REVISION
STATE OF HAWAII DEPARTMENT OF TRANSPORTATION HIGHWAYS DIVISION SPECIAL DRAIN MANHOLE #2 SECTION North-South Road Phase 1B F.A.I. Proj. No. STP-8930(2) Scale: As Noted Date: Feb. 21, 2007	
SHEET No. S6.11 OF 78 SHEETS	

ADD. 246