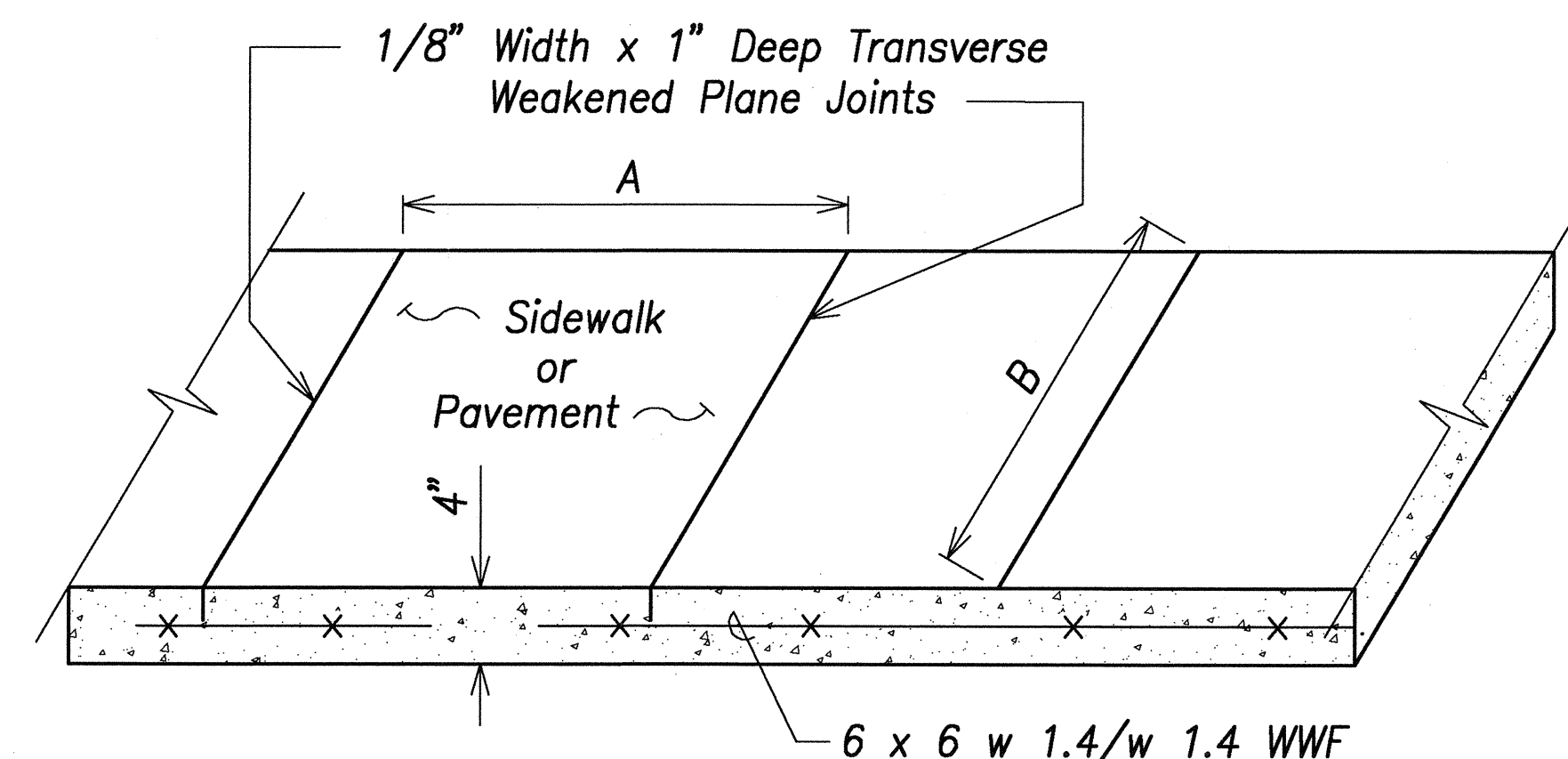


| FED. ROAD DIST. NO. | STATE | FED. AID PROJ. NO. | FISCAL YEAR | SHEET NO. | TOTAL SHEETS |
|---------------------|-------|--------------------|-------------|-----------|--------------|
| HAWAII | HAW. | STP-8930(2) | 2007 | 108 | 331 |

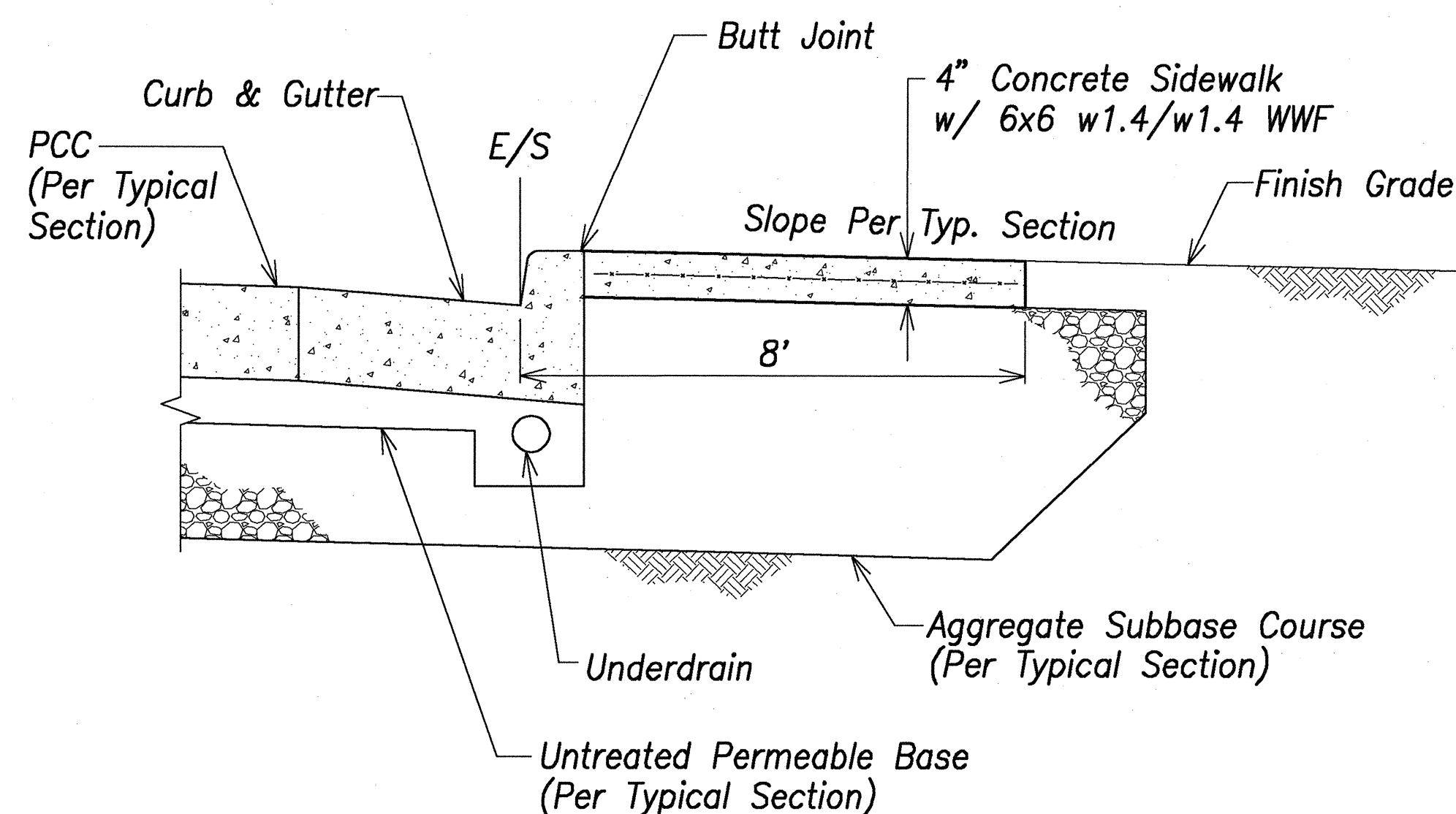


Notes:

1. Joint Dimension Ratios (B/A or A/B) < 1.25 and (A or B) not to exceed 7'.
2. Longitudinal weakened plane joints similar to transverse weakened plane joints.

Typical Sidewalk Detail

Not To Scale

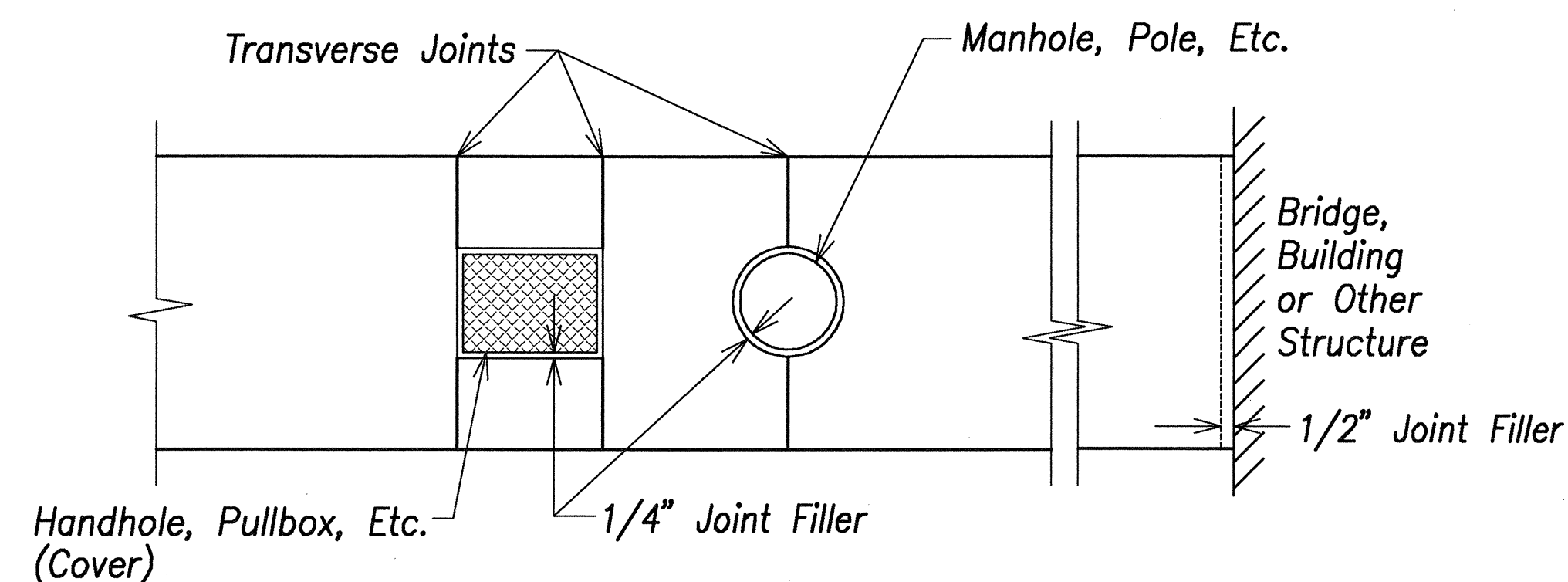


Notes:

1. Transverse and longitudinal weakened plane joints for sidewalk shall be considered incidental to the new sidewalk.
2. Installation of tie bars including drilling, and epoxy grout shall be incidental to Sidewalk.

Typical Sidewalk Section Detail

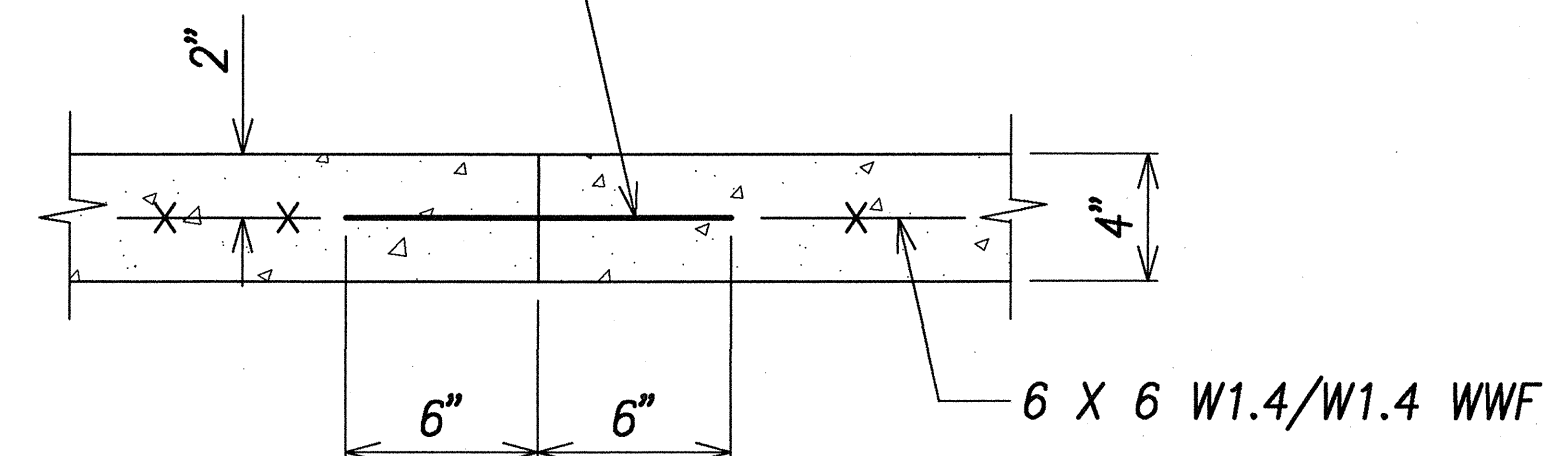
Not To Scale



Sidewalk Isolation Joint Detail

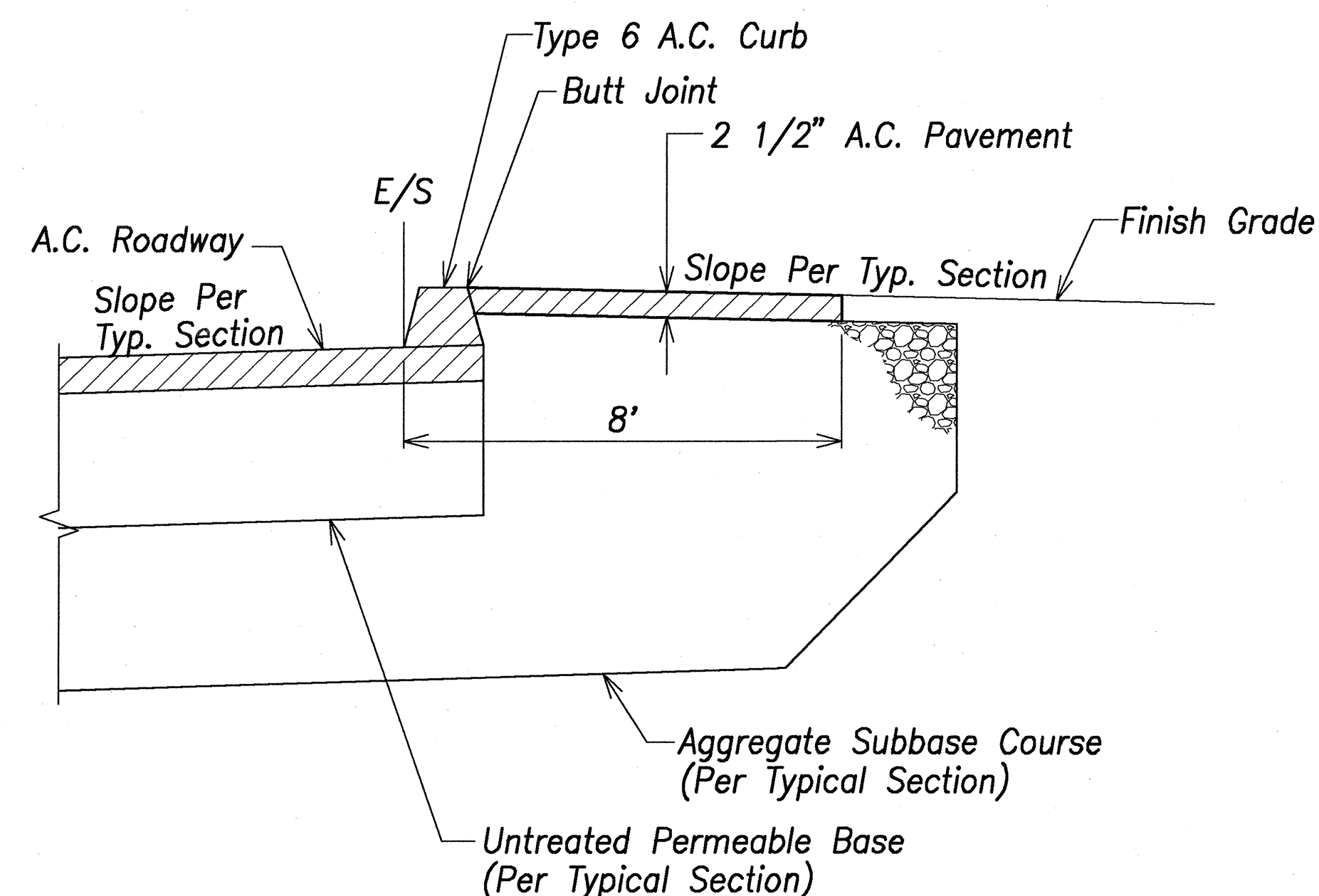
Not To Scale

Drill 3/8" ϕ x 12" Deformed Bars spaced at 18" O.C.



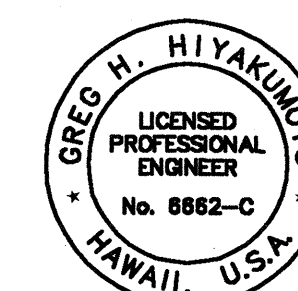
Transverse Construction Joint Detail

Not to Scale



A.C. Sidewalk Detail

Not To Scale



THIS WORK WAS PREPARED BY ME OR UNDER MY SUPERVISION

SIGNATURE DATE OF LICENSE EXPIRY

STATE OF HAWAII
DEPARTMENT OF TRANSPORTATION
HIGHWAYS DIVISION

SIDEWALK DETAILS

North-South Road
Phase 1B
F.A.I. Proj. No. STP-8930(2)

Scale: As Shown Date: Feb 21, 2007

SHEET No. C8.2 OF 150 SHEETS

| | |
|-------------------|------|
| SURVEY PLOTTED BY | DATE |
| DESIGNED BY | |
| TRACED BY | |
| NOTE BOOK | |
| QUANTITIES BY | |
| CHECKED BY | |
| No. | |