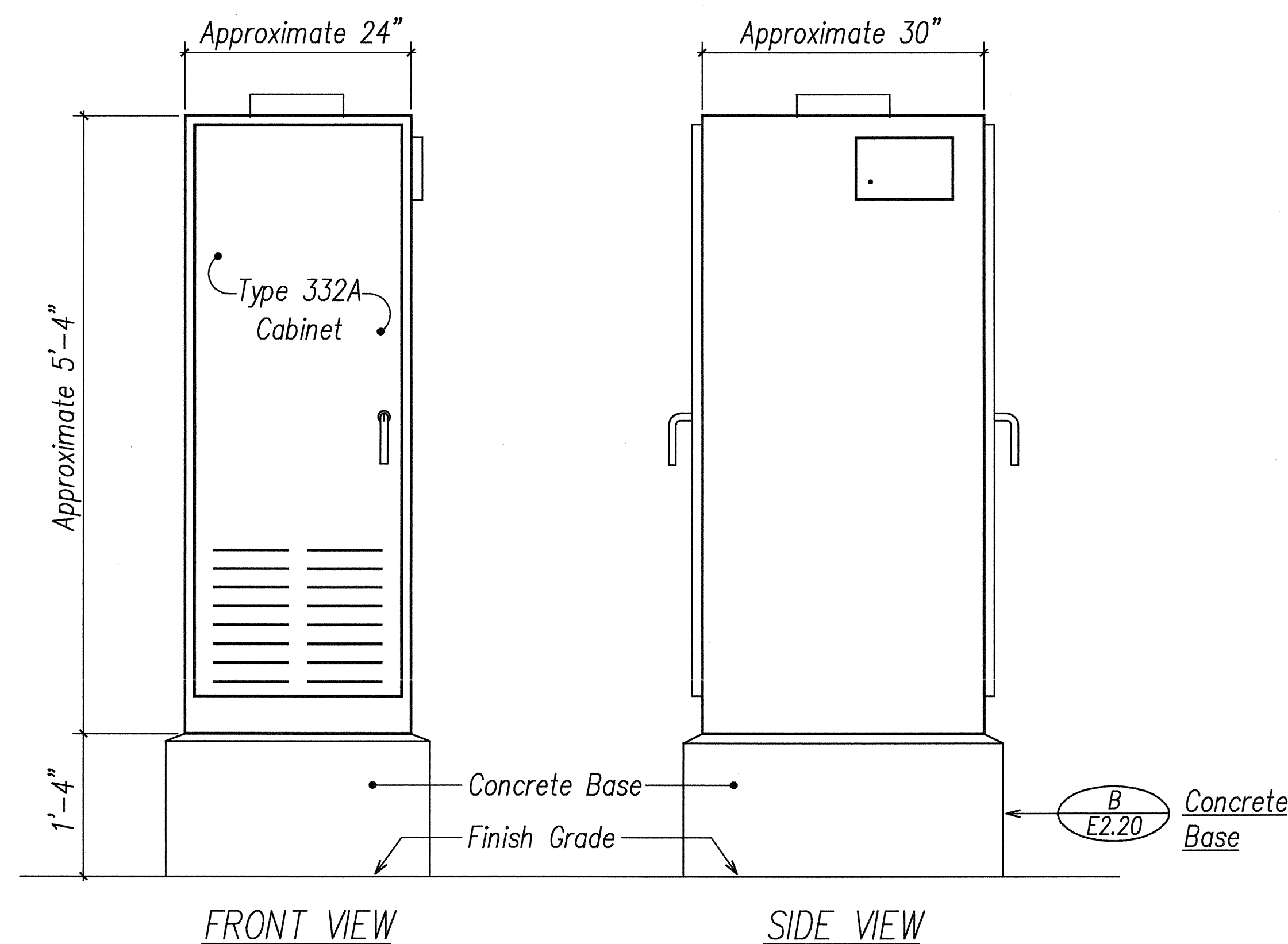
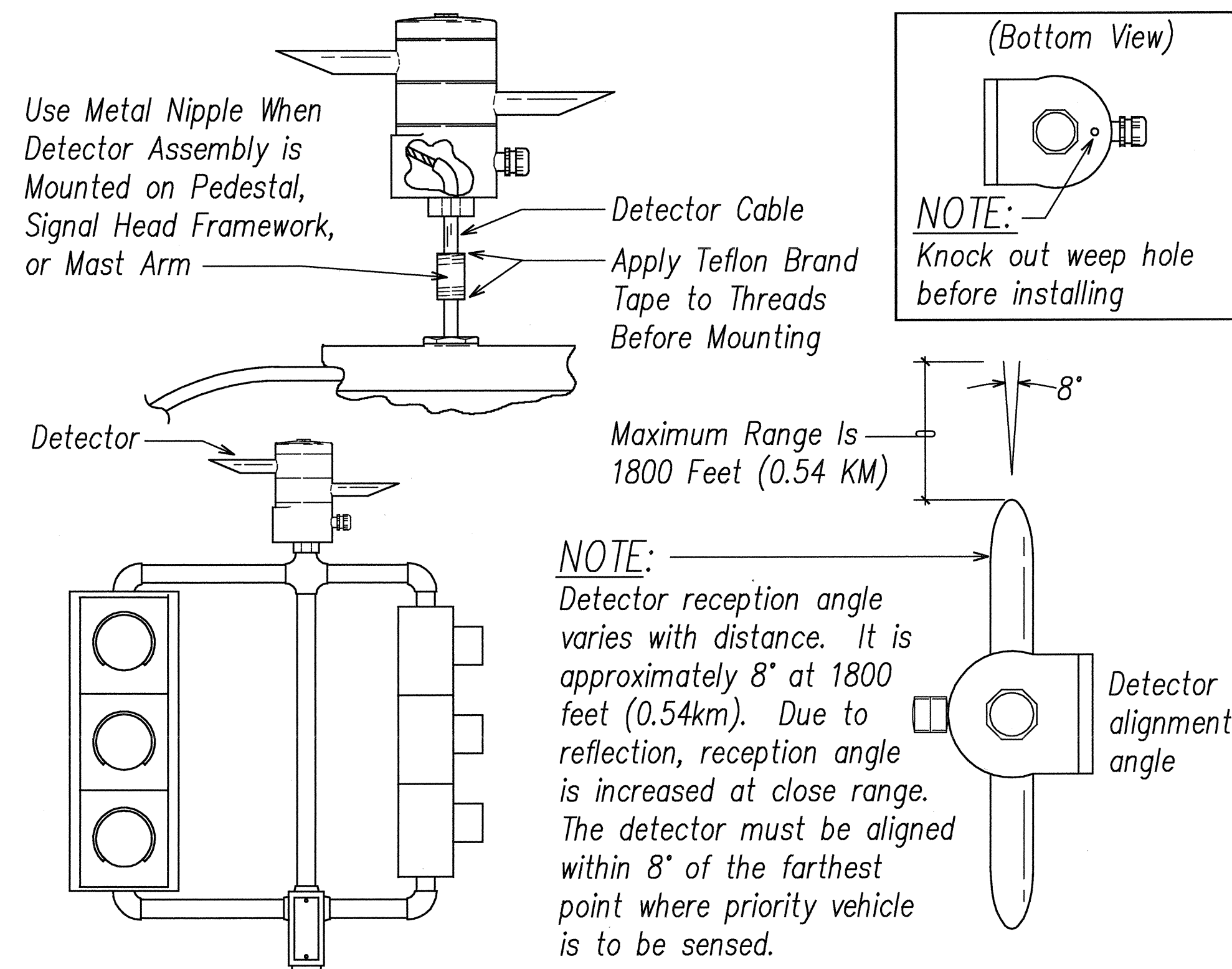


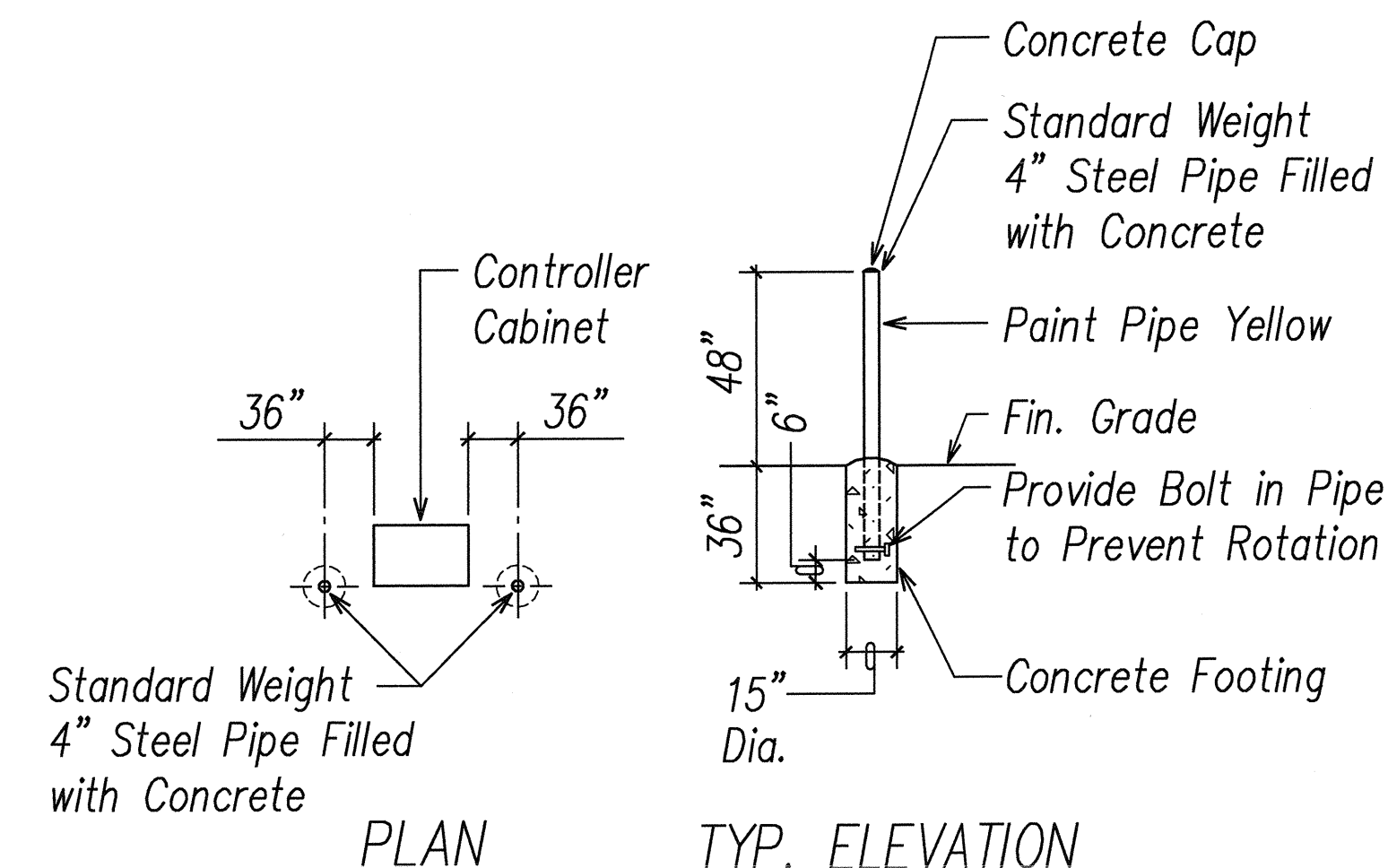
FED. ROAD DIST. NO.	STATE	FED. AID PROJ. NO.	FISCAL YEAR	SHEET NO.	TOTAL SHEETS
HAWAII	HAW.	STP-8930(2)	2007	301	331



**TYPE 332A TRAFFIC CONTROLLER**  
A  
E2.20 Not to Scale

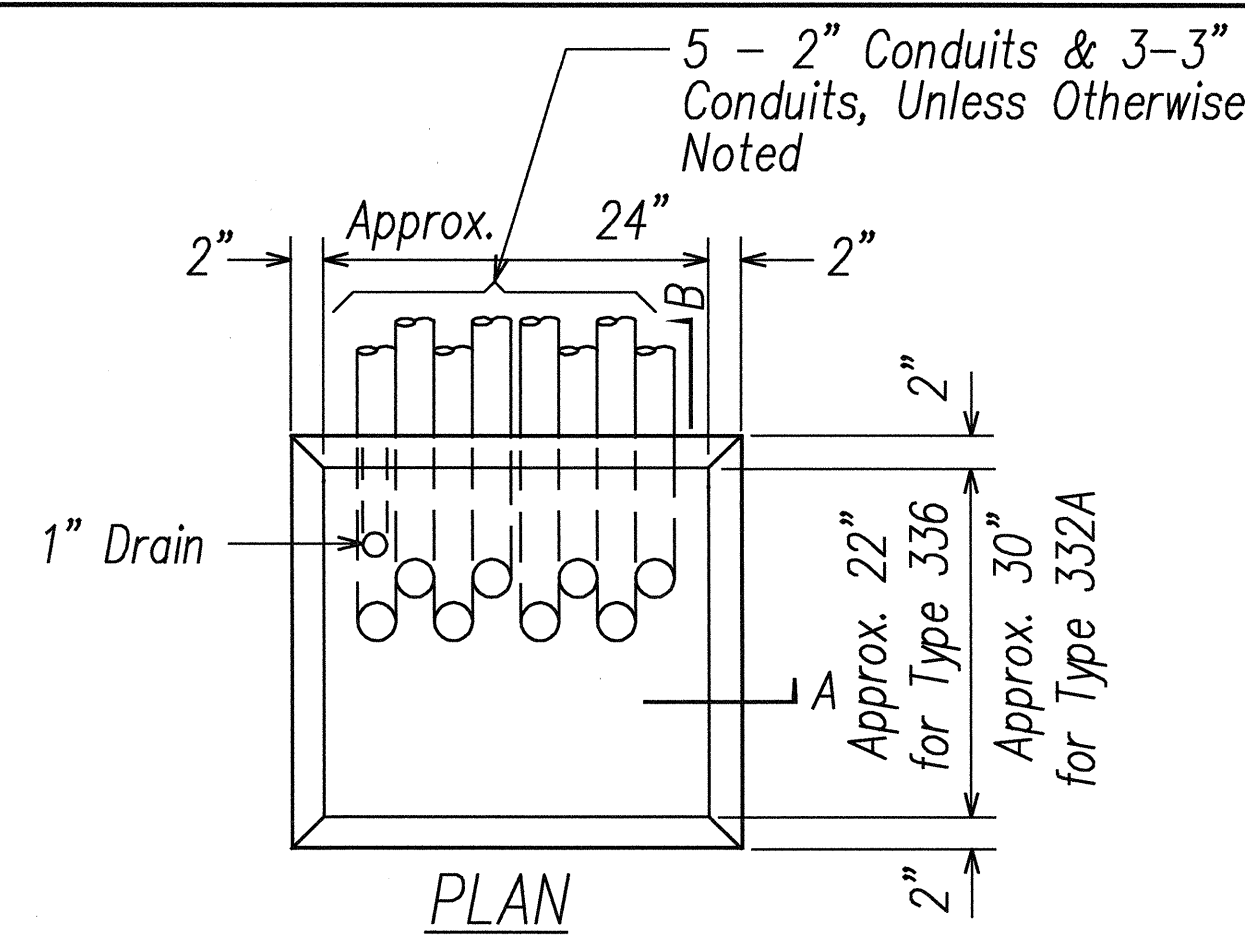


**TYPICAL PEDESTAL/MAST ARM INSTALLATION OF EVP DETECTOR**  
C  
E2.20 Not To Scale

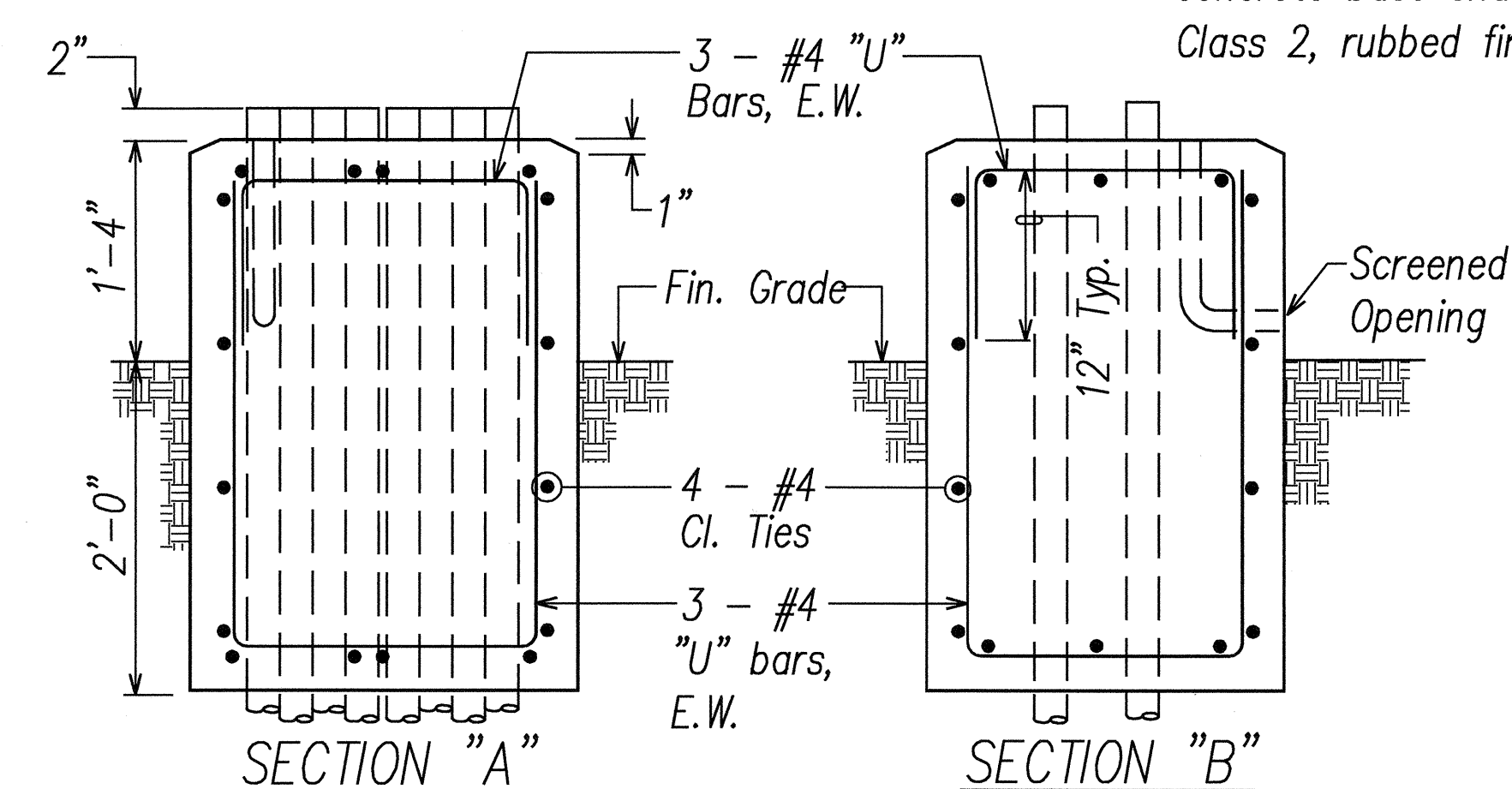


**NOTE:**  
Cost of concret filled galvanized posts shall be incidental to other items of work.

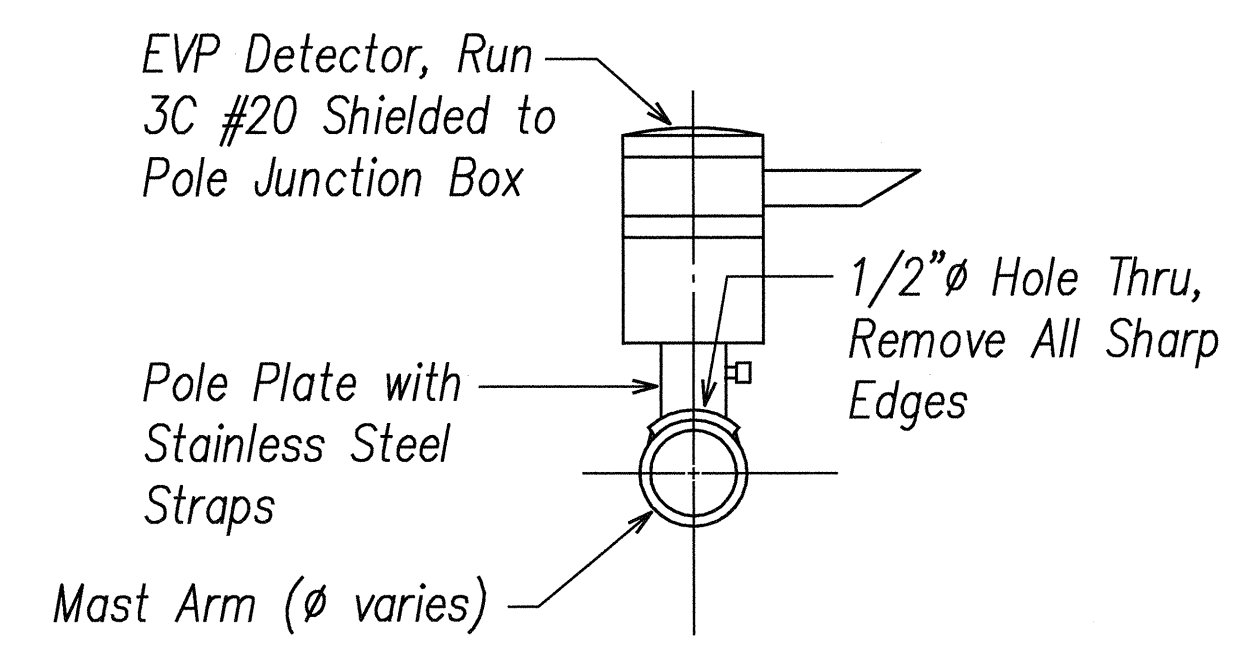
**PIPE GUARD DETAIL**  
F  
E2.20 Not To Scale



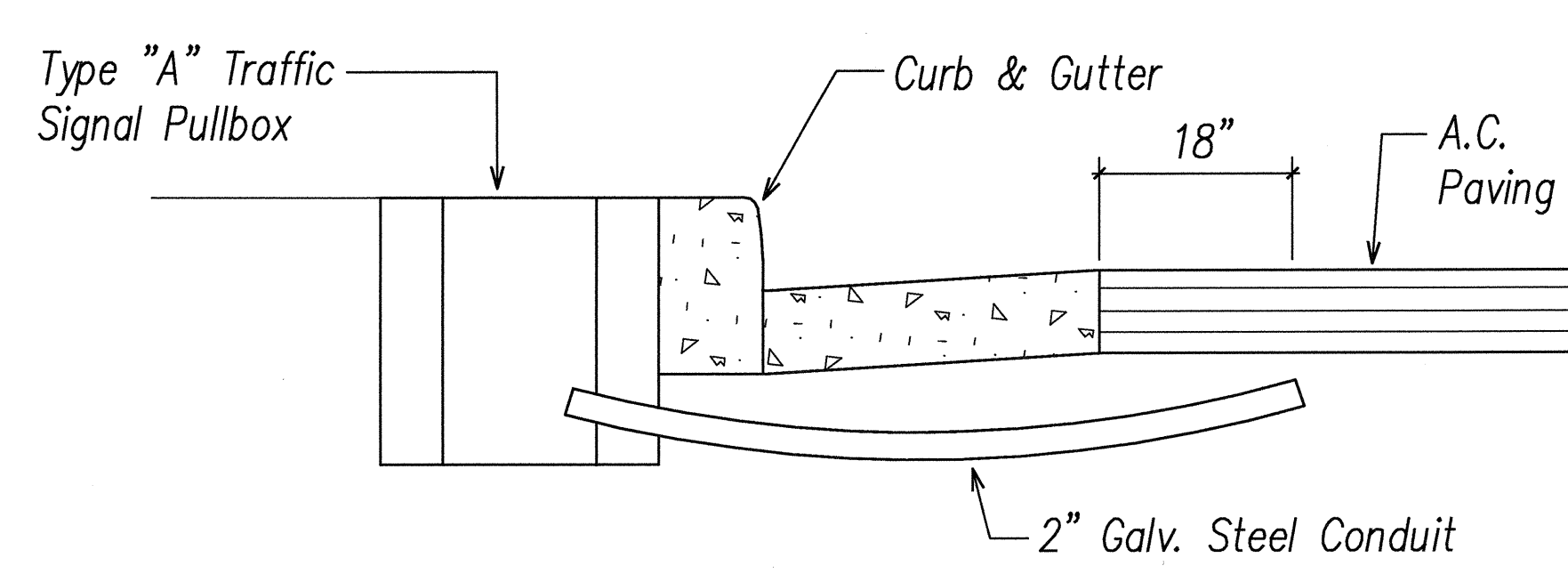
- NOTES:**
- Concrete shall be Class "B".
  - Dimensions shall be altered to suit controller cabinet actually furnished.
  - Conduit bends and drain are incidental to concrete base.
  - Refer to Cabinet Manufacturer's Specifications for details of anchor bolts and base setting.
  - All exposed surfaces of concrete base shall be given a Class 2, rubbed finish.



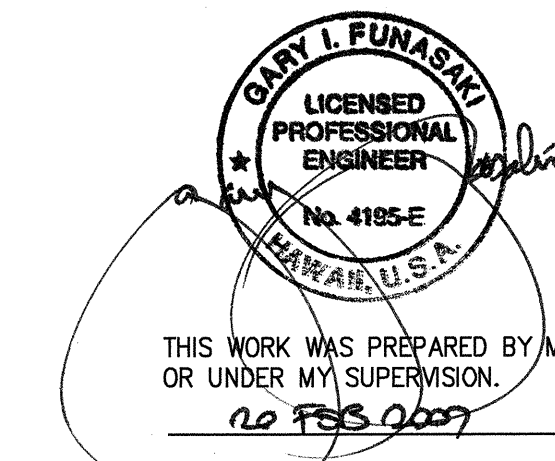
**TYPE "D" CONCRETE BASE CONTROLLER CABINET**  
B  
E2.20 Not To Scale



**TYPICAL HORIZONTAL MOUNT OF EVP DETECTOR**  
D  
E2.20 Not To Scale



**LOOP DETECTOR CONDUIT STUB OUT**  
E  
E2.20 Not To Scale



STATE OF HAWAII DEPARTMENT OF TRANSPORTATION HIGHWAYS DIVISION	
MISCELLANEOUS TRAFFIC SIGNAL DETAILS	
North-South Road Phase 1B F.A.I. Proj. No. STP-8930(2)	
Scale: AS NOTED	Date: Feb 21, 2007
SHEET No. E2.20 OF 62 SHEETS	

DATE	REVISION
1/21/07	1
1/21/07	2
1/21/07	3
1/21/07	4
1/21/07	5
1/21/07	6
1/21/07	7
1/21/07	8
1/21/07	9
1/21/07	10
1/21/07	11
1/21/07	12
1/21/07	13
1/21/07	14
1/21/07	15
1/21/07	16
1/21/07	17
1/21/07	18
1/21/07	19
1/21/07	20
1/21/07	21
1/21/07	22
1/21/07	23
1/21/07	24
1/21/07	25
1/21/07	26
1/21/07	27
1/21/07	28
1/21/07	29
1/21/07	30
1/21/07	31
1/21/07	32
1/21/07	33
1/21/07	34
1/21/07	35
1/21/07	36
1/21/07	37
1/21/07	38
1/21/07	39
1/21/07	40
1/21/07	41
1/21/07	42
1/21/07	43
1/21/07	44
1/21/07	45
1/21/07	46
1/21/07	47
1/21/07	48
1/21/07	49
1/21/07	50
1/21/07	51
1/21/07	52
1/21/07	53
1/21/07	54
1/21/07	55
1/21/07	56
1/21/07	57
1/21/07	58
1/21/07	59
1/21/07	60
1/21/07	61
1/21/07	62