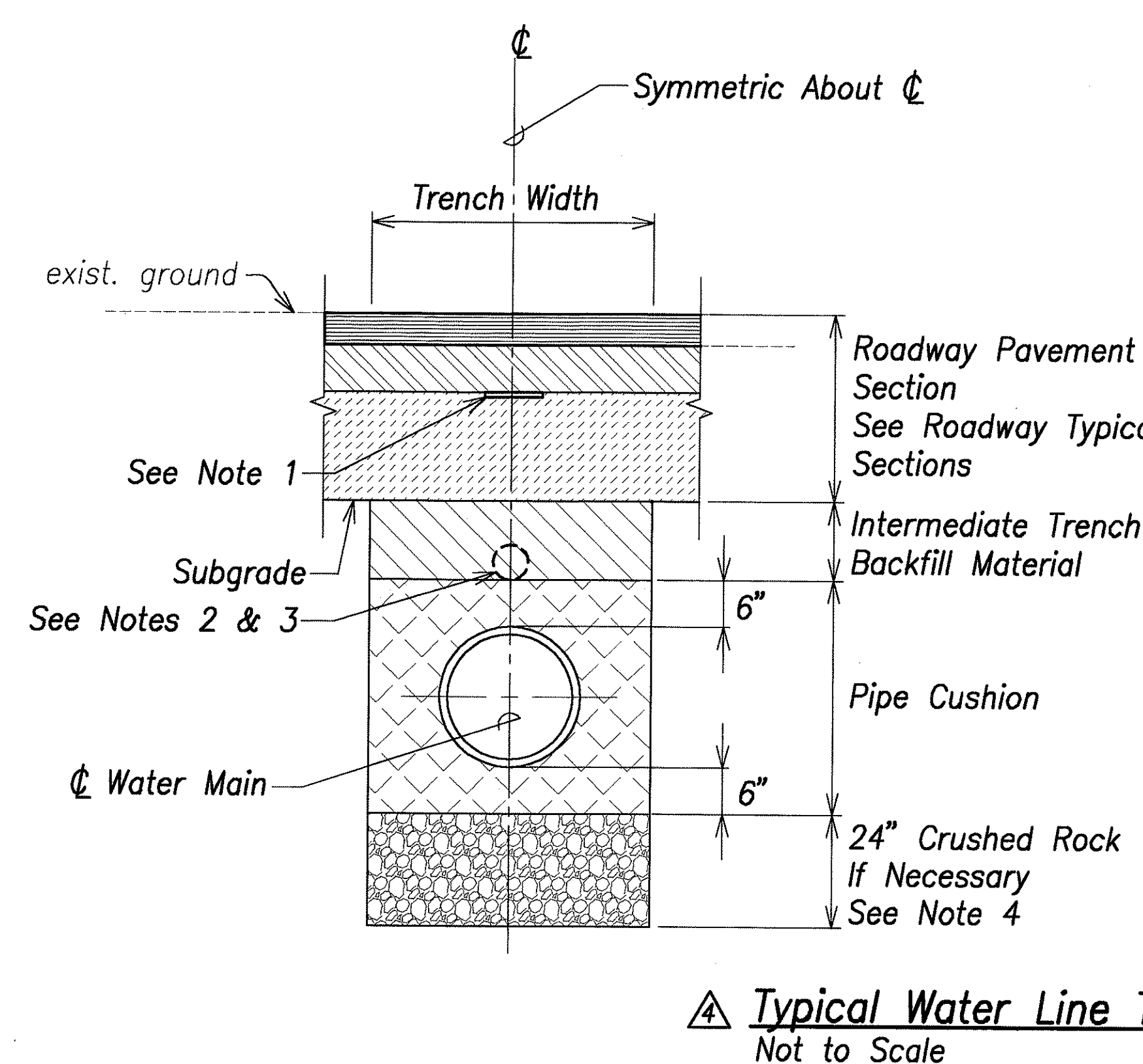
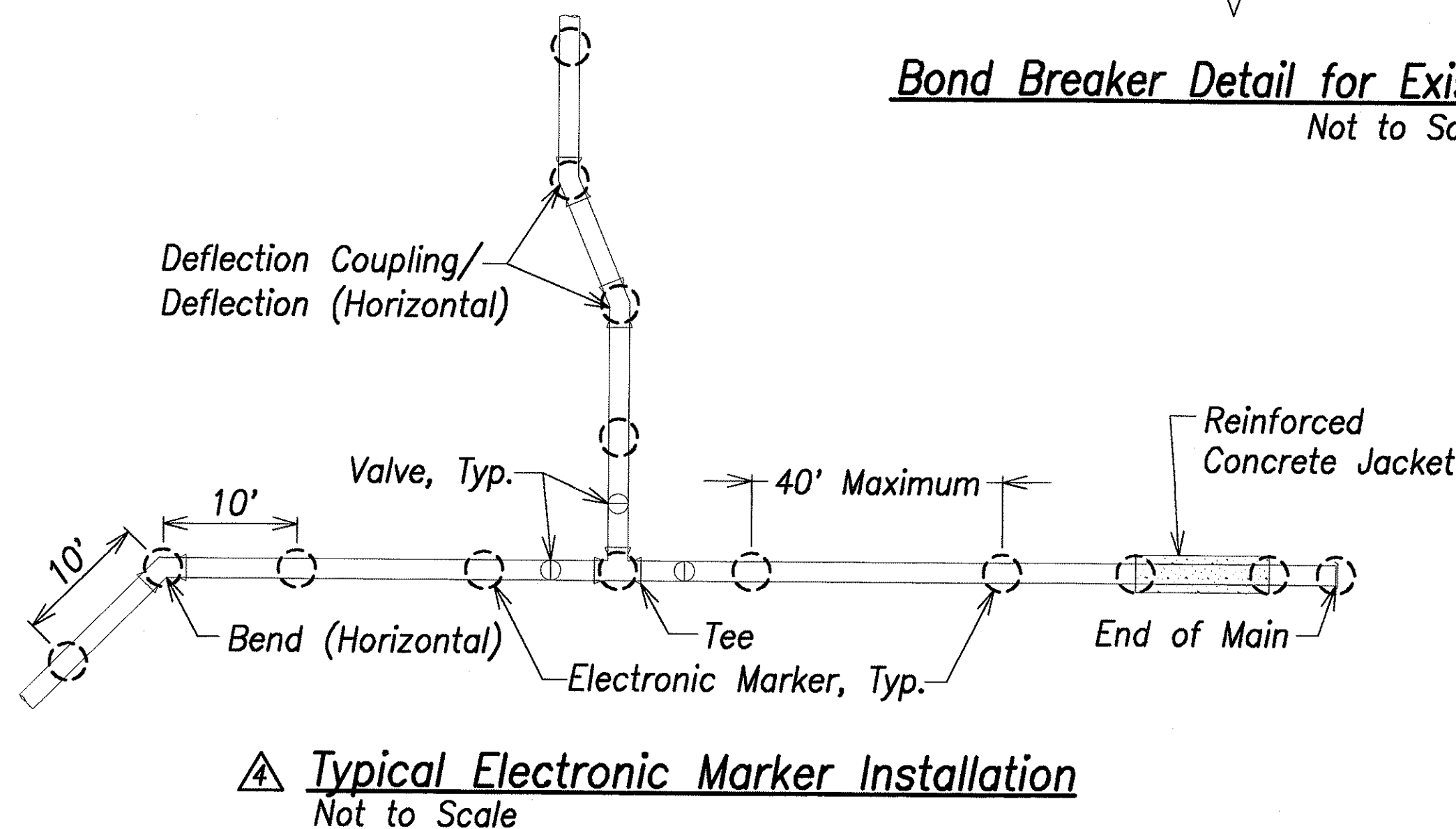
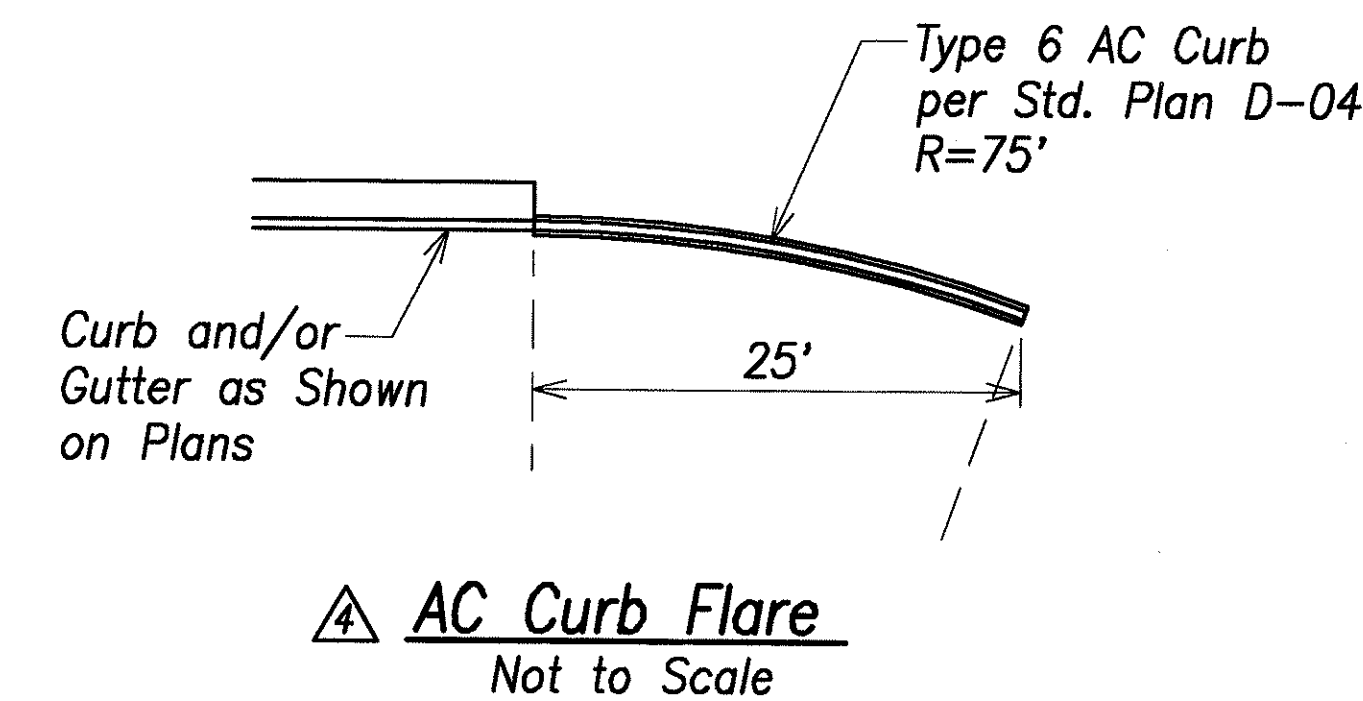
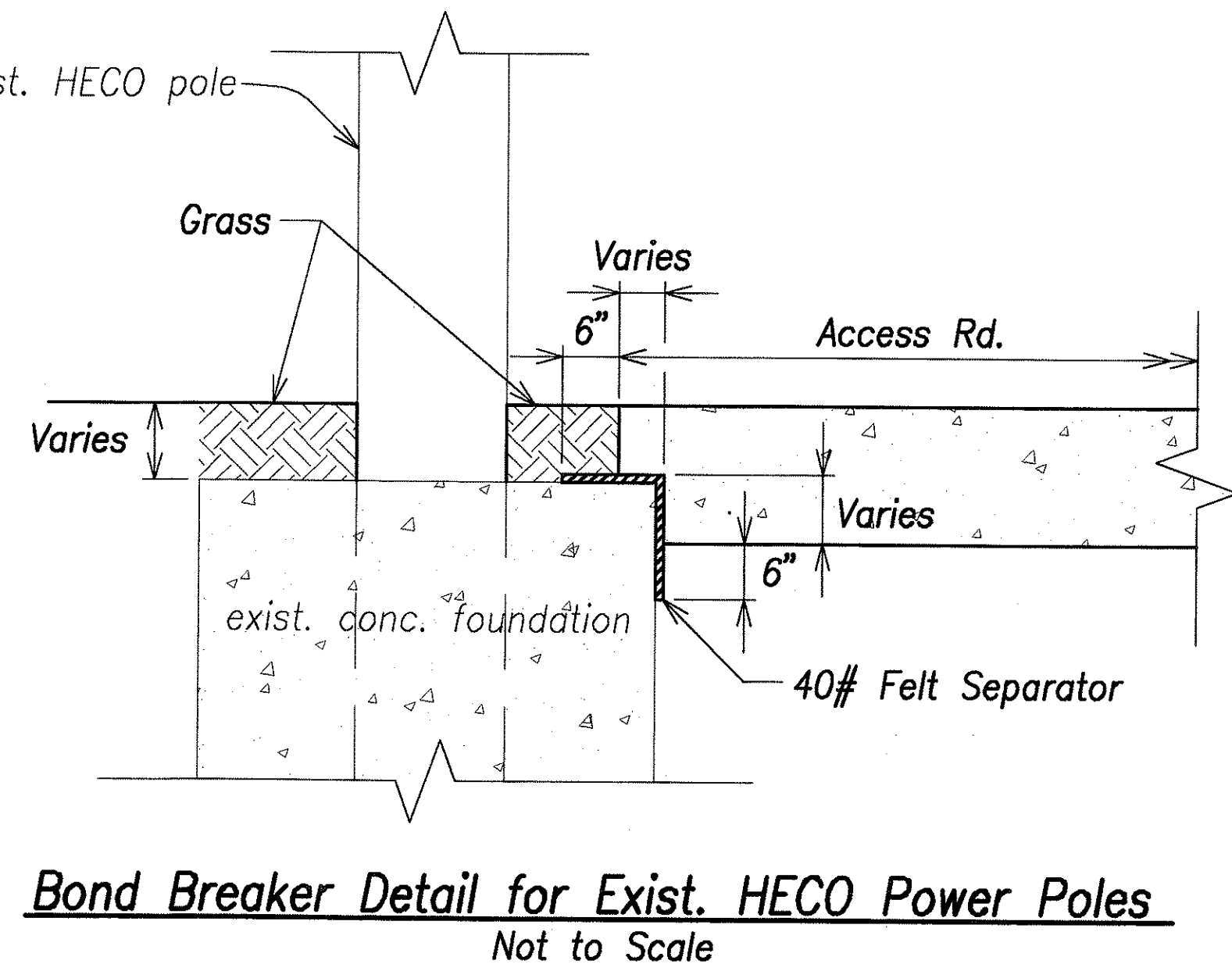
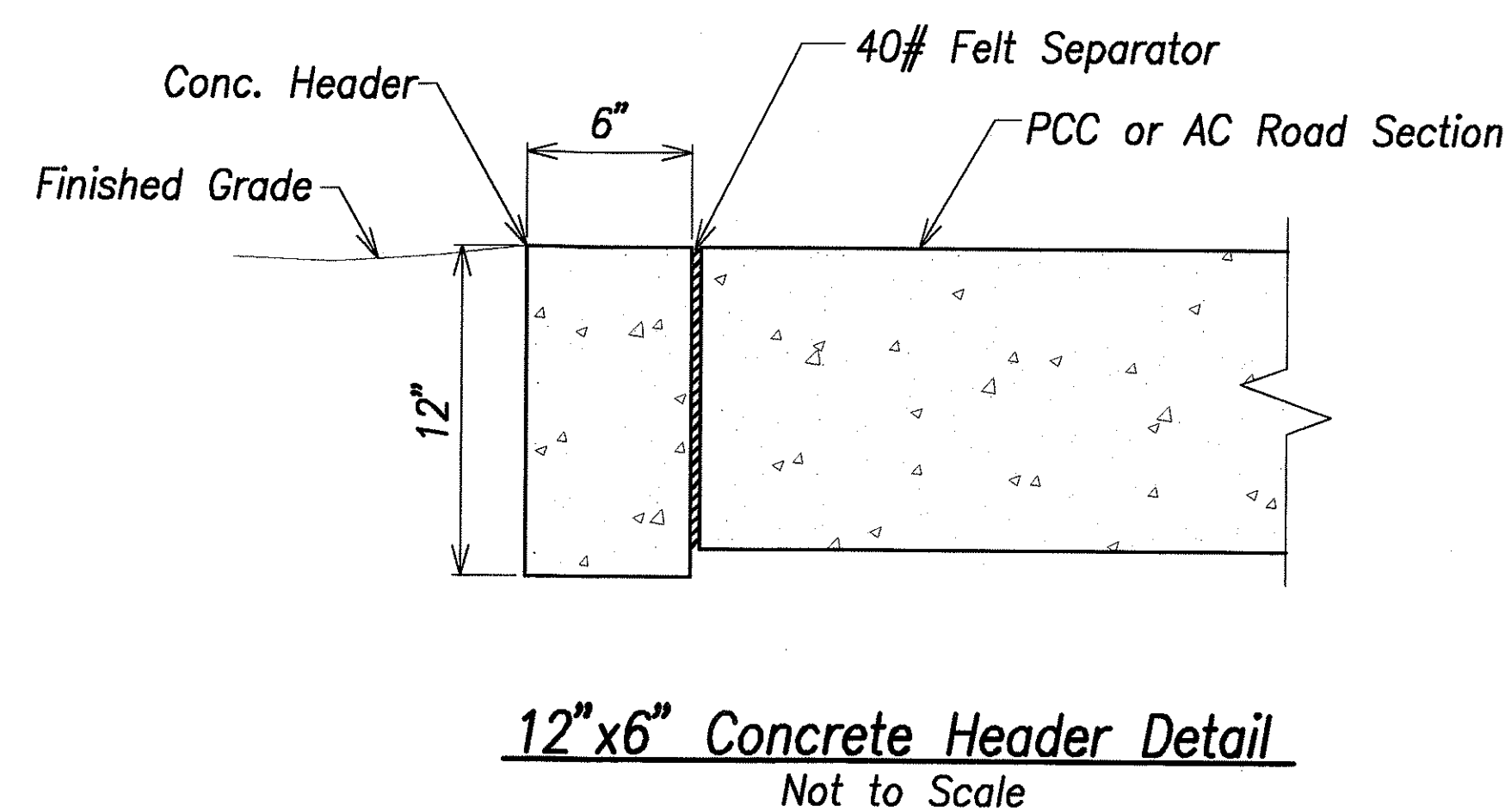


FED. ROAD DIST. NO.	STATE	FED. AID PROJ. NO.	FISCAL YEAR	SHEET NO.	TOTAL SHEETS
HAWAII	HAW.	STP-8930(2)	2007	ADD. 107	331



Water Line Trench Notes:

1. Install 4 mil thick blue colored warning tape 6" wide over centerline of the pipe and below the base course along the entire length of trench. Tape should be marked with "caution waterline buried below." Payment for the furnishing and installation of the warning tape shall be incidental to the unit price bid for the pipe.
2. Install electronic marker over centerline of pipe at a minimum depth of 2 feet and a maximum depth of 3 feet from finish grade at locations indicated in "Typical Electronic Marker Installation" detail.
3. Install electronic markers at a minimum clearance of 6-inches, where possible. Install markers on or above concrete jackets.
4. Soft or loose soils encountered at the bottom of trenches shall be over-excavated to expose firm natural material or to maximum of 24 inches and backfilled with No. 3B fine gravel that is encapsulated by a non-woven geotextile fabric (Amoco 4546 or equivalent). This material shall be considered as additional to the recommended six (6) inches below the pipe.

APPROVED:

Chief, Capital Projects Division, B.W.S. Date



THIS WORK WAS PREPARED BY ME OR UNDER MY SUPERVISION.
DATE OF LICENSE EXPIRY: APR 30, 2008
SIGNATURE: *Shing H. Hui*

5/31/07	Added details, revised detail
DATE	REVISION
STATE OF HAWAII DEPARTMENT OF TRANSPORTATION HIGHWAYS DIVISION MISCELLANEOUS DETAILS North-South Road Phase 1B F.A.I. Proj. No. STP-8930(2)	
Not to Scale	Date: Feb 21, 2007
SHEET No. C8.1 OF 150 SHEETS	