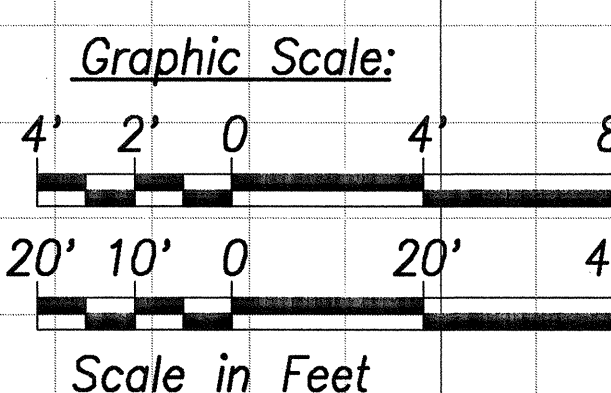
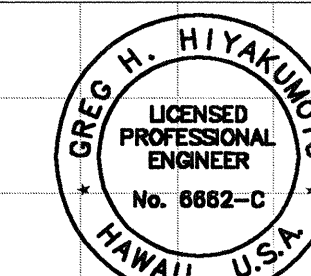
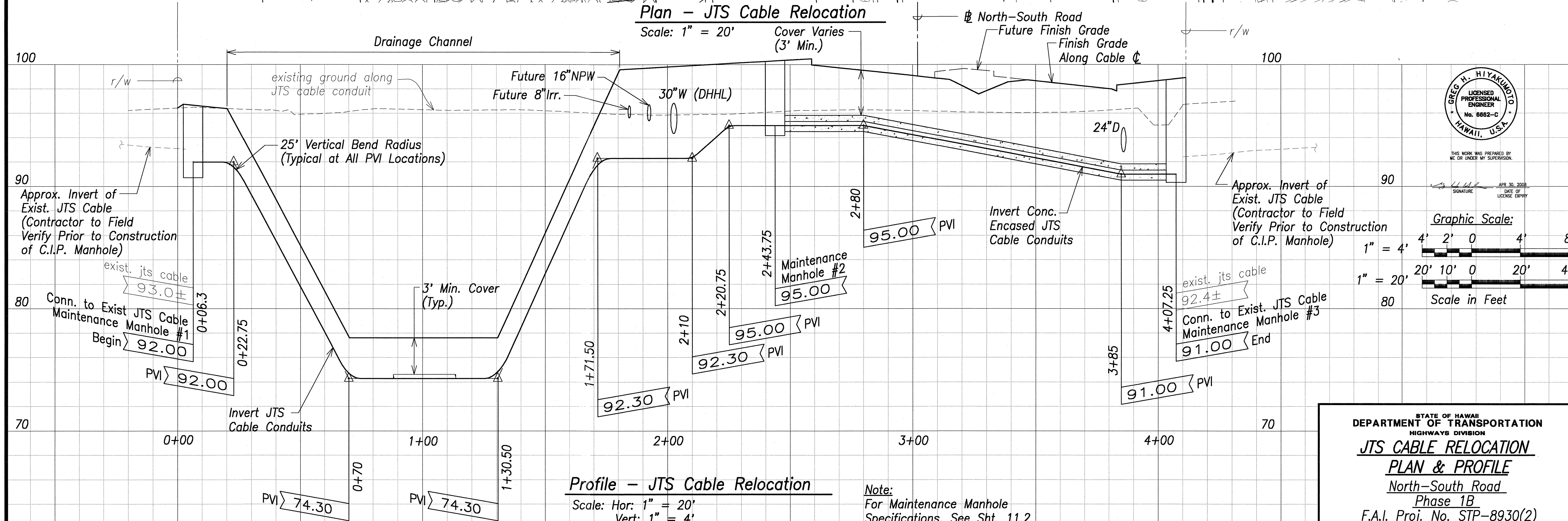
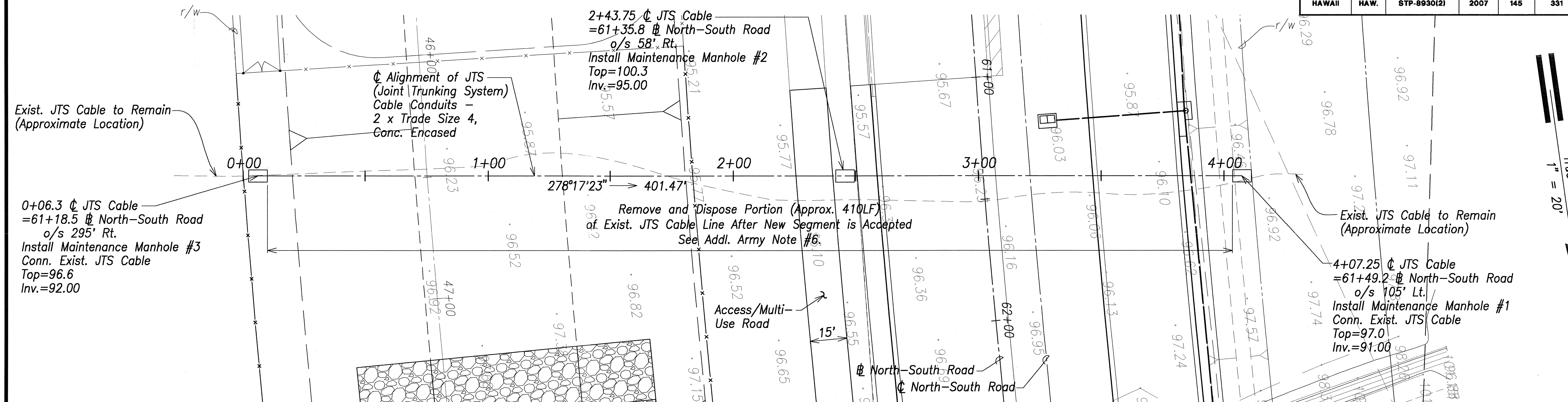


FED. ROAD DIST. NO.	STATE	FED. AID PROJ. NO.	FISCAL YEAR	SHEET NO.	TOTAL SHEETS
HAWAII	HAW.	STP-8930(2)	2007	145	331



STATE OF HAWAII
DEPARTMENT OF TRANSPORTATION
HIGHWAYS DIVISION

JTS CABLE RELOCATION
PLAN & PROFILE
North-South Road
Phase 1B
F.A.I. Proj. No. STP-8930(2)

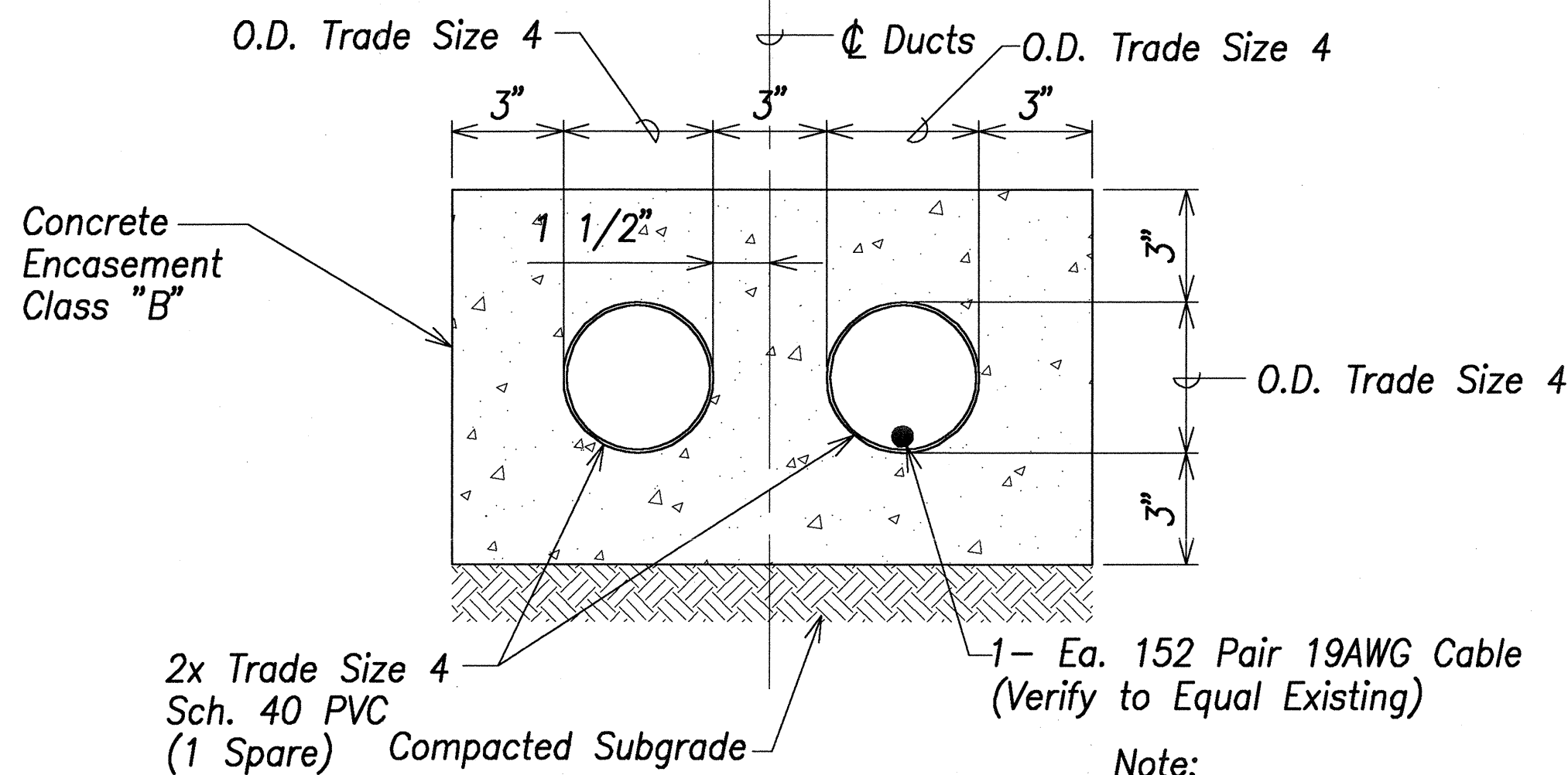
Scale: As Shown Date: Feb 21, 2007

SHEET No. C11.1 OF 150 SHEETS

SURVEY PLOTTED BY	DATE
DESIGNED BY	
QUANTITIES BY	
CHECKED BY	
ORIGINAL PLAN	
NOTE BOOK	
No.	

FED. ROAD DIST. NO.	STATE	FED. AID PROJ. NO.	FISCAL YEAR	SHEET NO.	TOTAL SHEETS
HAWAII	HAW.	STP-8930(2)	2007	146	331

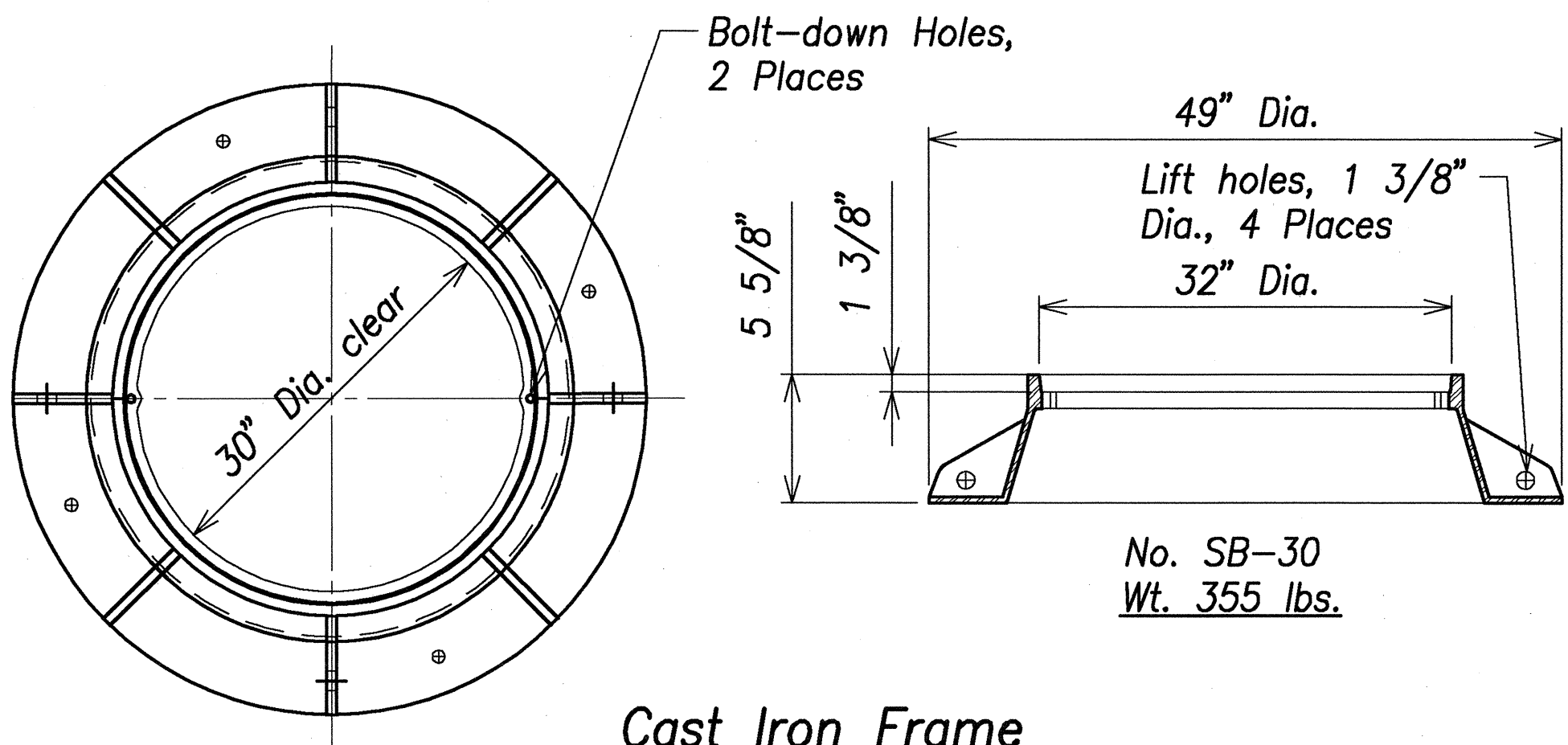
Buried Orange "CAUTION" Warning Tape ("CAUTION - COMMUNICATION LINE BURIED BELOW") Installed 12" Below Finish Grade, Centered Above Encasement.



**Typical Section
Concrete Encased Duct**

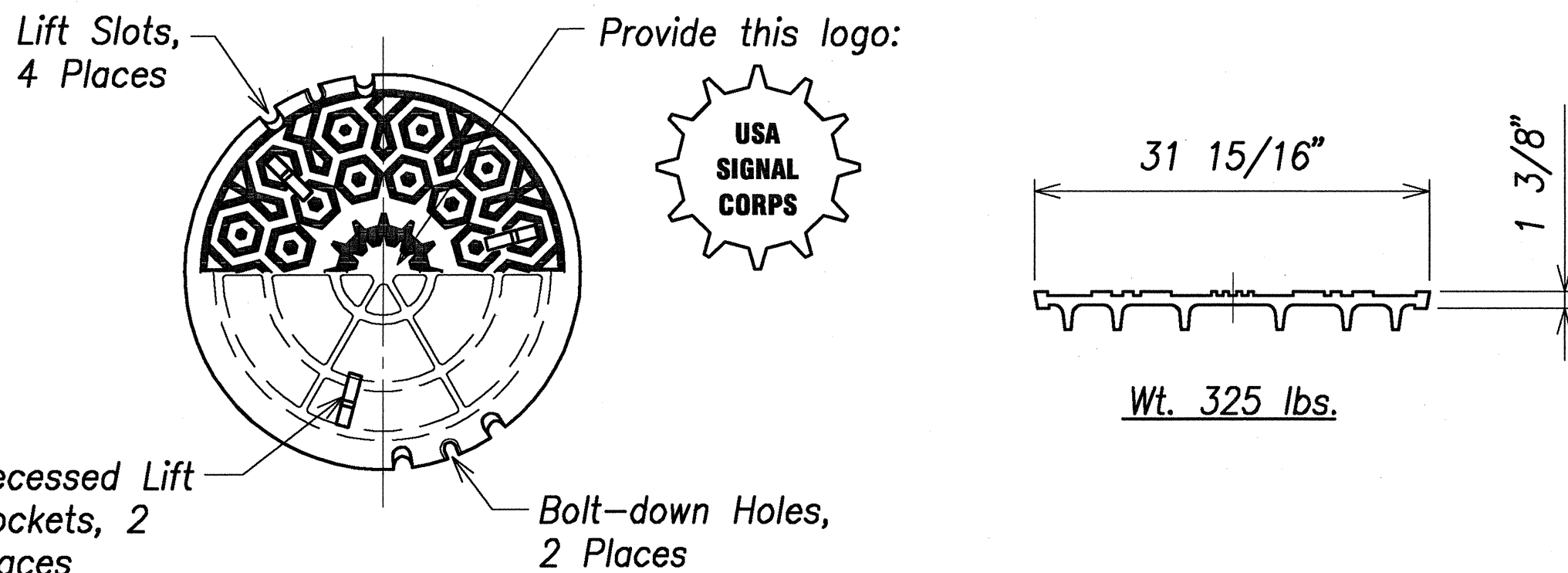
Not to Scale

Note:
For Trench and Backfill
Balance of Details and
Requirements, See Det. A,
Sht. E2.1



Cast Iron Frame

Not to Scale



Cast Iron Cover

Not to Scale

**Intercept Type Communications Manhole
Frame And Cover Details**

Not to Scale

U.S. Army Signal Corps Notes

1. The location of underground facilities as shown on the plans are from record of varying degrees of accuracy and are not guaranteed as shown. The Contractor shall take necessary precautions not to damage existing cables or ducts. Any work involving existing cables, ducts or structures containing Signal Corps facilities shall be coordinated with the 30th Signal Battalion (Joint Trunking System Executive Agent) Darryl Shaw, LtC, SC.
2. The Contractor shall notify the U.S. Army prior to proceeding with work on the Signal Corps System, 72 hours in advance (phone 656-6656 or 656-3514).
3. The Contractor will be responsible for any damages to the existing Signal Corps System. Any and all damages shall be immediately reported to the U.S. Army JTS EA and repaired at no cost to the State or Government.
4. Existing Signal Corps Ductline may consist of transite or lead-containing material. If removed, the transite and lead-containing material shall be properly disposed.
5. The Contractor will be responsible for any changes, relocations and provide "As-Built" records to the JTS EA upon completion of the project. Mail "As-Built" drawings to: 30th Signal Battalion, Wheeler Army Airfield, 148 Curtis Loop, Room 1157, Schofield Barracks, HI 96857-5020.

Additional U.S. Army Signal Corps Notes

1. The minimum number of conduits shall be two trade size 4, maintenance holes (MH) shall have dimensions of 5 feet wide by 7.6 feet long by 7.8 feet high, and all facilities shall be buried at the national standard depths. Conduits shall have a minimum cover of 24 inches (encased), 36 inches (unencased), or as stipulated within the newest edition of the "Hawaii Standard Specification for Road, Bridge, and Public Works Construction," whichever is more stringent.
2. Upon completion of the infrastructure project, the Contractor shall submit to the Engineer a verified record drawings or as-built drawings.
3. Should the contractor cause damage to or discover any unknown cables during the course of construction, please notify the point of contact below. The point of contact is Mr. Thomas R. Hiltner, office (808)656-6656, FAX (808)656-2804, alternate Ms. Dale A. Shinseki-Hironaka, (808)656-3514, FAX (808)656-2804.
4. The Contractor shall maintain existing Army cable during construction with limited service interruptions.
5. Duct system shall have one empty conduit after the installation of cabling. Pull string shall be installed in all ducts. Vacant ducts are to be plugged using acceptable duct plugs and conduits containing cable shall be plugged using acceptable plugging compound to minimize water infiltration.
6. Remove existing direct buried Army signal cables and handholes once new facilities and cabling are installed, tested and operational. Backfill and restore existing site location equal or better than original condition.
7. Maintenance Manhole shall have a minimum inside dimension of 4'-0"W x 6'-0"L and shall be contained in a 5'-0" easement. Acceptable manholes are Verizon-466 Intercept Vault or 466-GTE Intercept Manhole. Contractor shall submit shop drawings of the Maintenance Manhole for approval. See detail at left for mahole frame and cover requirements.

DESIGNED BY	DATE
DRAWN BY	
CHECKED BY	
NOTED BY	
QUANTITIES BY	
NO.	



THIS WORK WAS PREPARED BY
ME OR UNDER MY SUPERVISION.
DATE OF
LICENSURE EXPIRY

STATE OF HAWAII
DEPARTMENT OF TRANSPORTATION
HIGHWAYS DIVISION

**JTS CABLE DETAILS
& NOTES**

**North-South Road
Phase 1B
F.A.I. Proj. No. STP-8930(2)**

Not to Scale Date: Feb 21, 2007

SHEET No. C11.2 OF 150 SHEETS