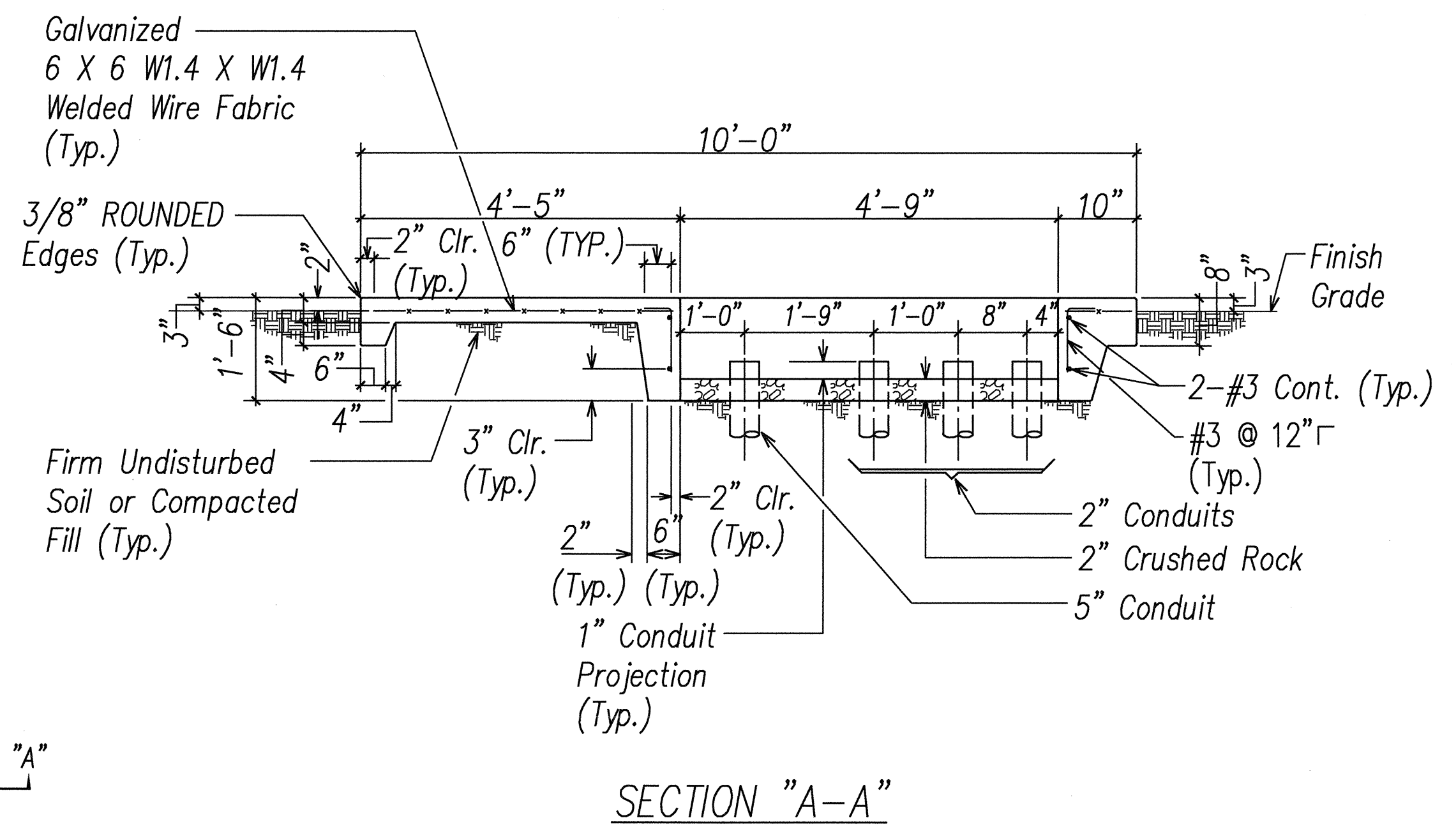
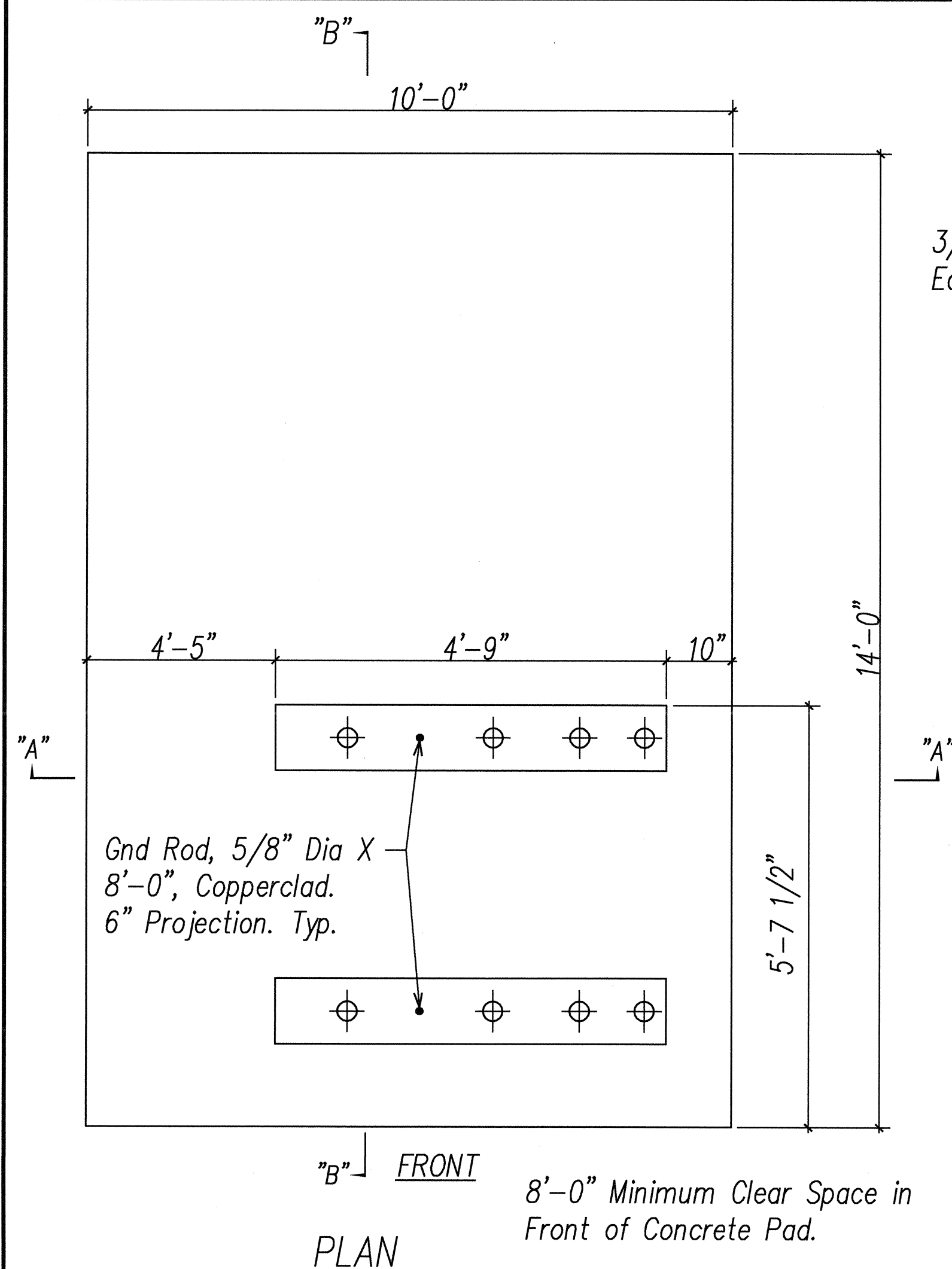
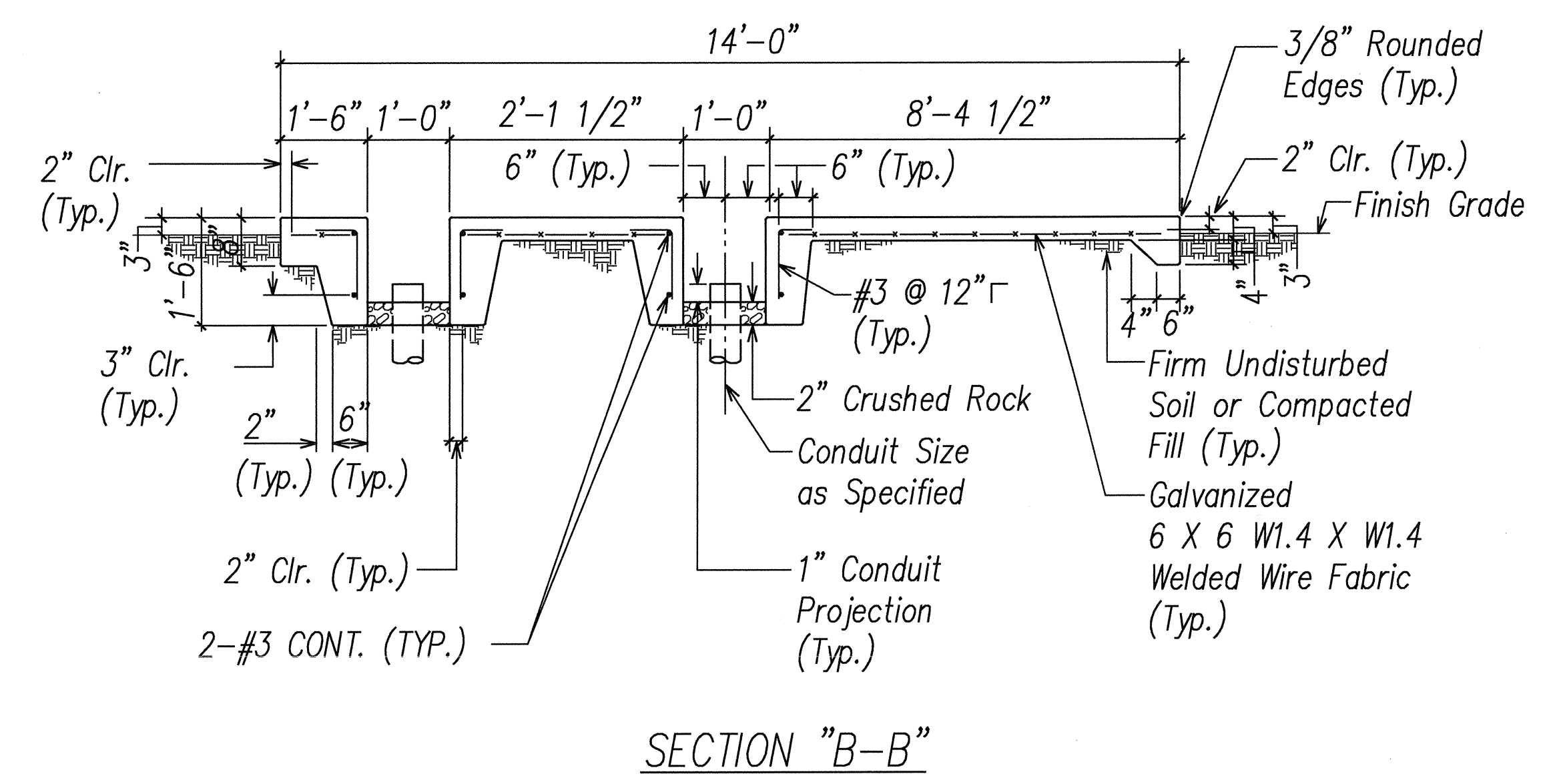


FED. ROAD DIST. NO.	STATE	FED. AID PROJ. NO.	FISCAL YEAR	SHEET NO.	TOTAL SHEETS
HAWAII	HAW.	STP-8930(2)	2007	288	331

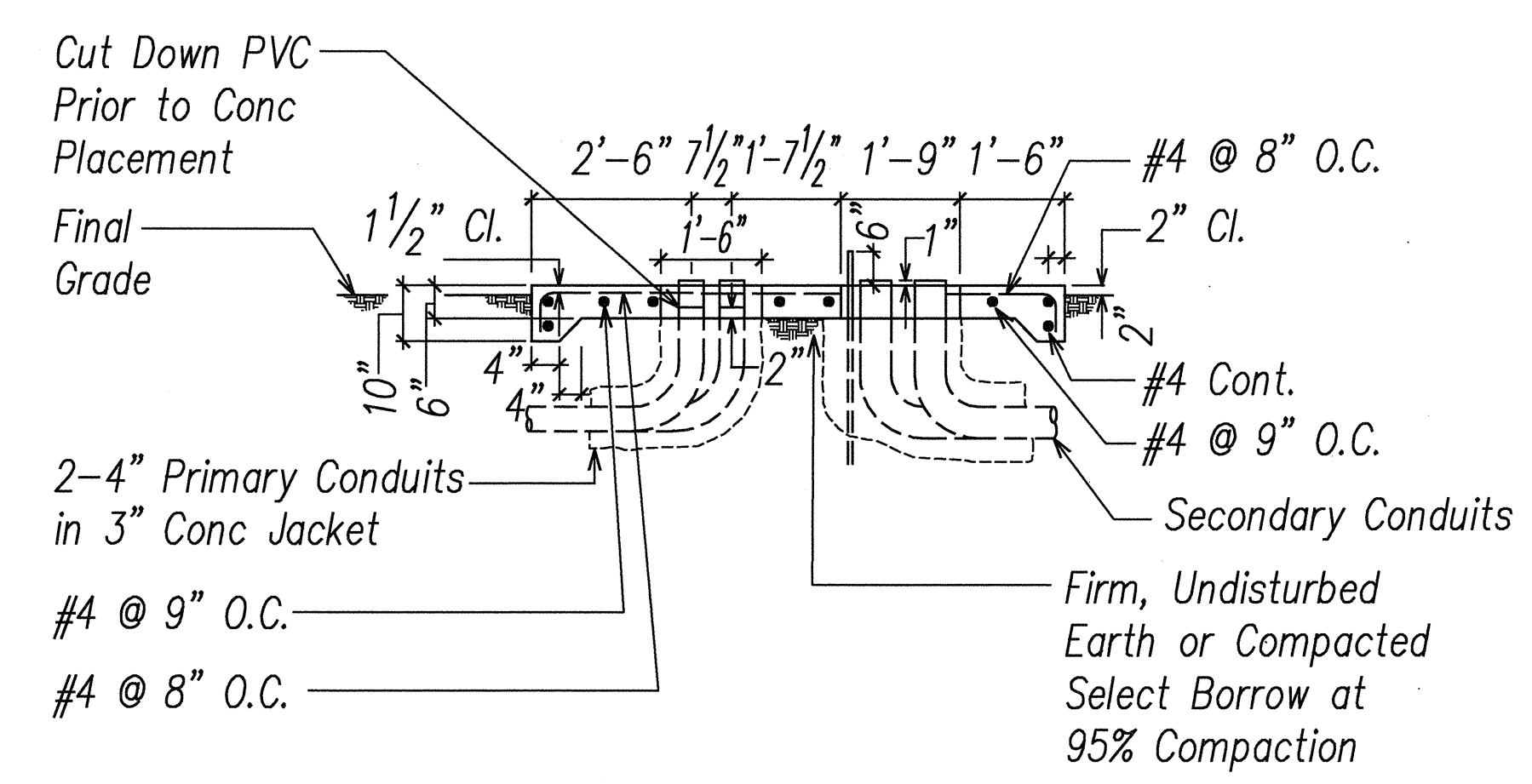
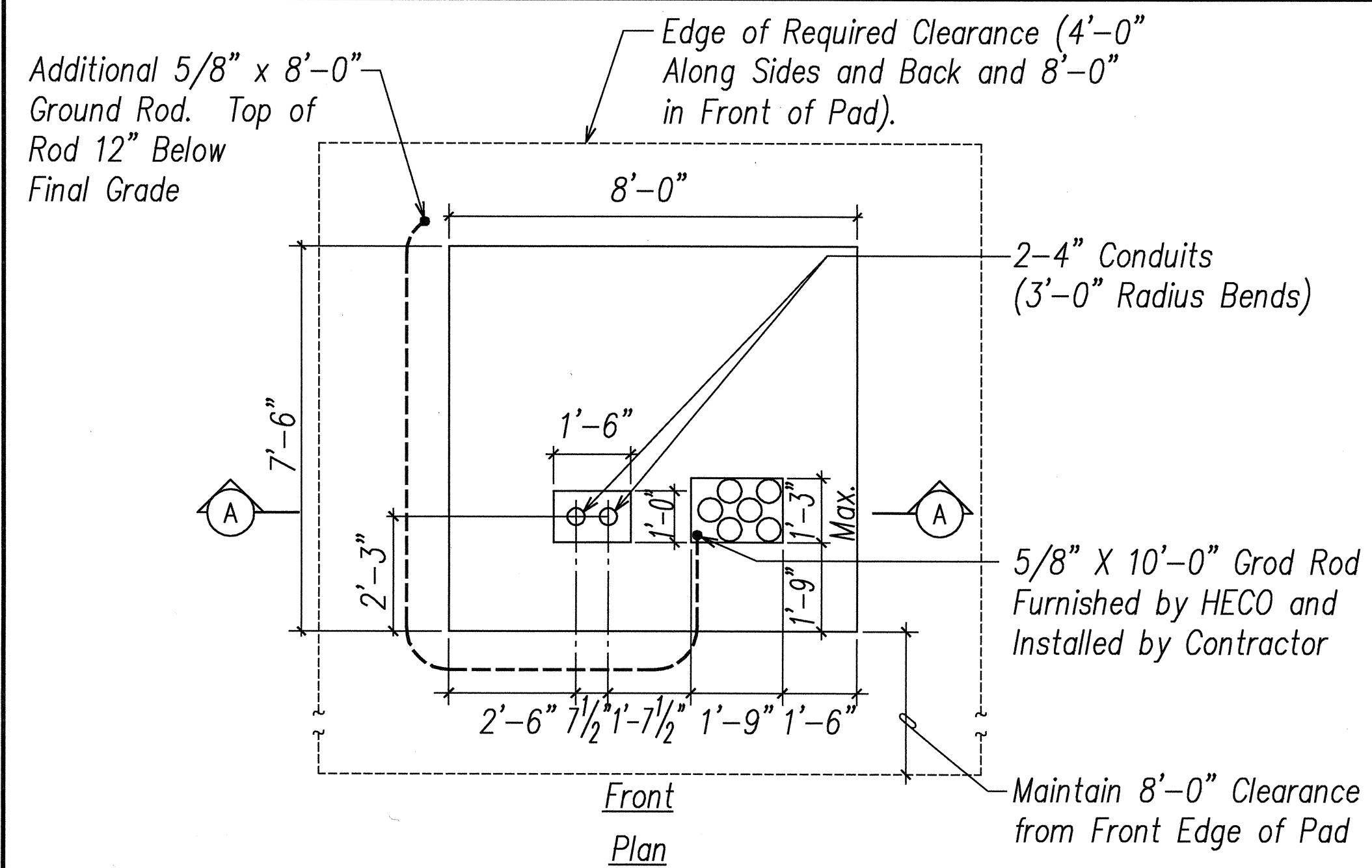


- Notes:
- Concrete Compressive Strength: 3000 PSI 28 Days. HECO Std. Specification CS7401.
 - Reinforcing: Clean and New Round Deformed Bars (Gr 40) and Galvanized 6 X 6 W1.4 X W1.4 Welded Wire Fabric.
 - Top of Concrete Pad to be Smooth and True. Other Exposed Surfaces to be Smooth and Free from Defects.
 - Construction to Comply with ACI 318 as Amended.
 - Weight of Switchgear Equals 2,150 Pounds.

AUTOMATIC TRANSFER SWITCHING EQUIPMENT PAD
(HECO Std. 30-5040)



- Notes:
- See HECO Standard Dwg. No. 30-5000 for locations and clearances.
 - See HECO Standard Dwg. No. 22-2005 for additional requirements.
 - 5/8" dia. x 10'-0" ground rod (Stock code 193457) furnished by HECO and installed by Contractor. If ground resistance exceeds 25 ohms, provide additional 5/8" diameter x 8'-0" ground rod (Stock Code 101527) and connect 4/0- bare copper ground wire between ground rods. A minimum of 6'-0" shall be maintained between the driven ground rods. a second ground rod will probably be required when soil resistivity is greater than 67 ohm-meters.
 - Concrete: 3000 PSI compressive strength in 28 days. Moisture cure concrete pad a minimum of 7 days.
 - Reinforcing: ASTM A615, grade 40 minimum.
 - Located, secure, and cap all conduits before pouring pad, Top of concrete to be smooth and true, wood-float finish, free of defects, as per applicable City and County Specifications. Round all exposed edges to 3/4" chamfer.
 - Maintain a relatively level, minimum clearance of 2'-6" from the sides of the pad, 2'-0" from the back of pad, and 8'-0" in front of pad. Extend concrete pad an additional 8'-0" in front if located in planting area.



75 - 300 KVA CONCRETE TRANSFORMER PAD
DETAIL (3-PHASE)
(HECO Std. 30-5011)

APPROVED BY:
HAWAIIAN ELECTRIC COMPANY, INC. DATE

DATE	REVISION

STATE OF HAWAII
DEPARTMENT OF TRANSPORTATION
HIGHWAYS DIVISION

HECO EQUIPMENT PAD DETAILS

North-South Road
Phase 1B
F.A.I. Proj. No. STP-8930(2)

Scale: AS NOTED Date: Feb 21, 2007

SHEET No. E2.7 OF 62 SHEETS

DATE: 02/20/2007
DRAWN BY: [Signature]
CHECKED BY: [Signature]
DESIGNED BY: [Signature]
NOTED BY: [Signature]
LAST SAVE: 02/20/2007 08:14:53 PM
FILE: STP-8930(2) 02-20-07 08:14:53 PM

GARY I. FUNASAKI
LICENSED PROFESSIONAL ENGINEER
No. 4195-E
HAWAII, U.S.A.

THIS WORK WAS PREPARED BY ME OR UNDER MY SUPERVISION.
20 FEB 2007