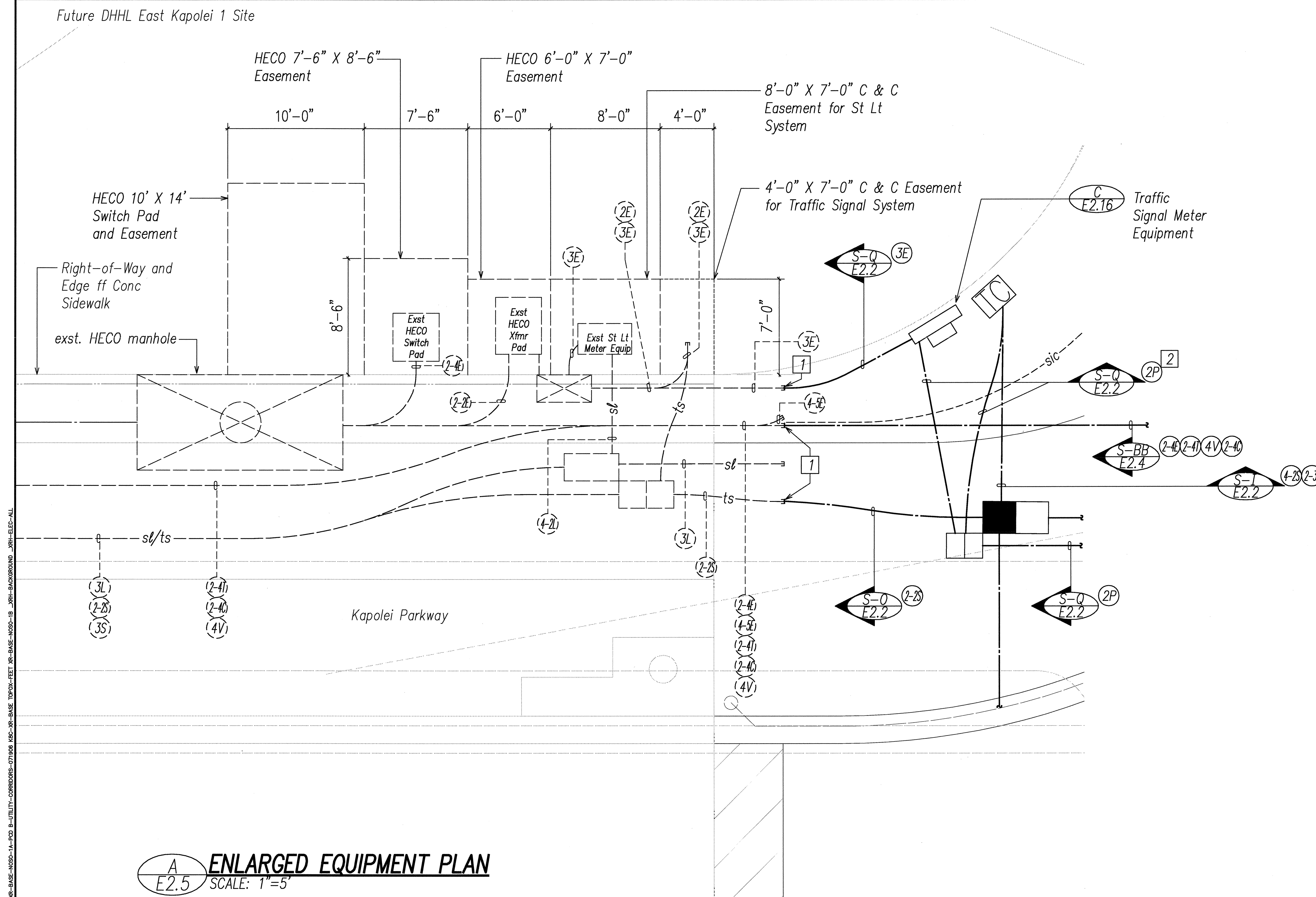


FED. ROAD DIST. NO.	STATE	FED. AID PROJ. NO.	FISCAL YEAR	SHEET NO.	TOTAL SHEETS
HAWAII	HAW.	STP-8930(2)	2007	286	331



 **ENLARGED EQUIPMENT PLAN**
SCALE: 1"=5'

Notes:

- 1 Expose existing duct(s), provide coupling(s) & extend.
- 2 Provide 3#6 RHW-USE & #8 GND.

APPROVED BY:

HAWAIIAN ELECTRIC COMPANY, INC.

DATE _____

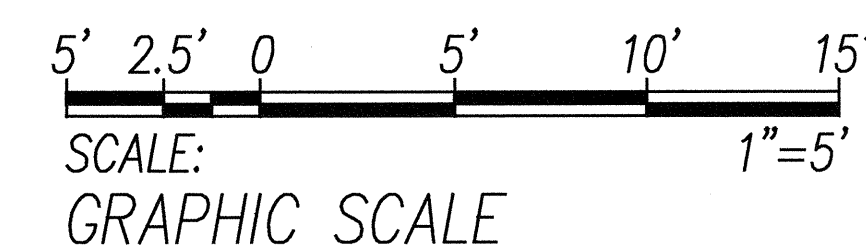
HAWAIIAN TELCOM

OCEANIC TIME WARNER CABLE

DATE _____

SANDWICH ISLES COMMUNICATIONS, INC.

DATE _____



		<u>F.A.I. Proj. NO. STP-0950(Z)</u> Scale: AS NOTED Date: Feb 21, 2007	
DATE	REVISION	SHEET No. E25 OF 62 SHEETS	

STATE OF HAWAII
DEPARTMENT OF TRANSPORTATION
HIGHWAYS DIVISION
ELECTRICAL EQUIPMENT LAYOUT I

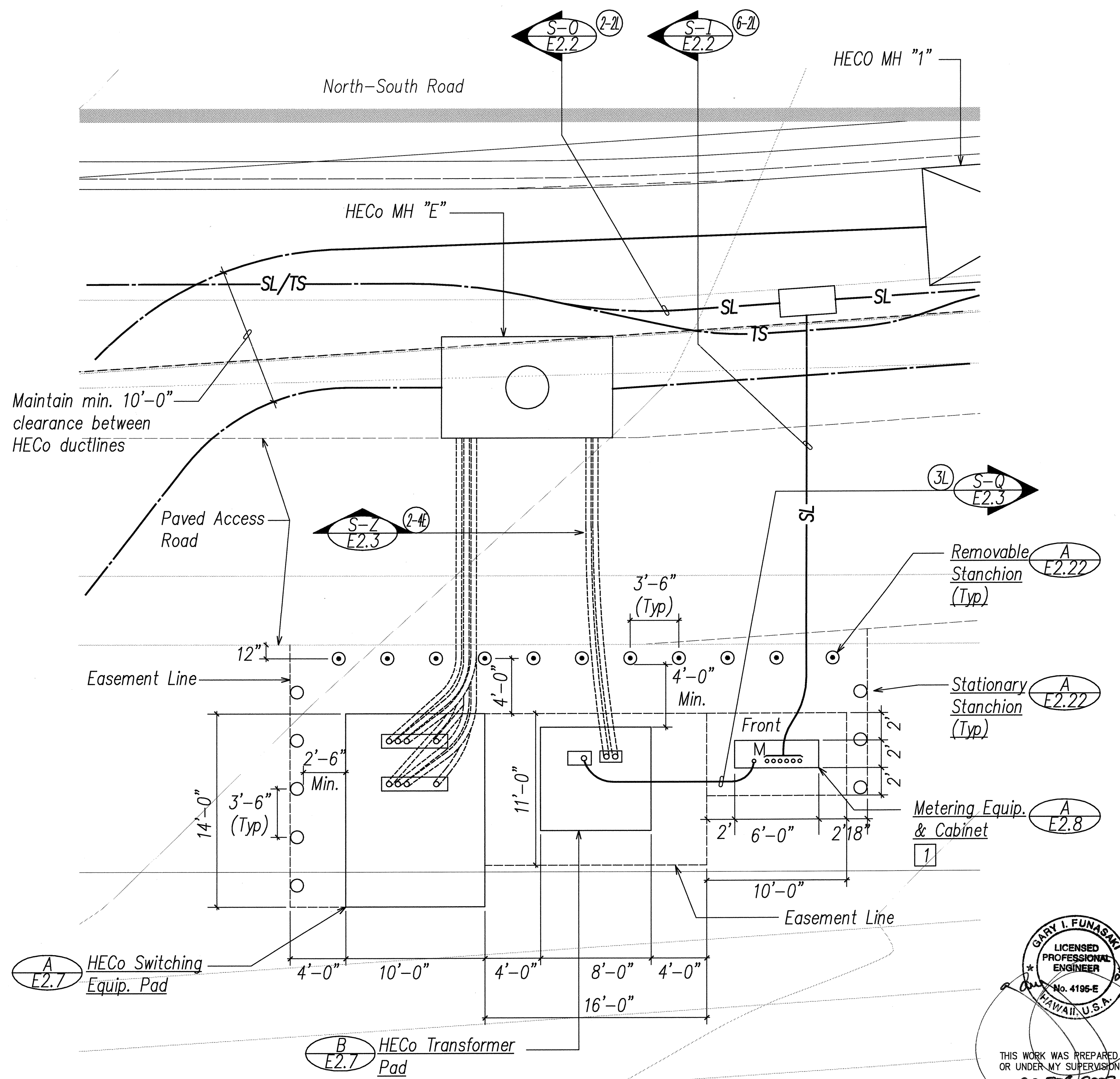
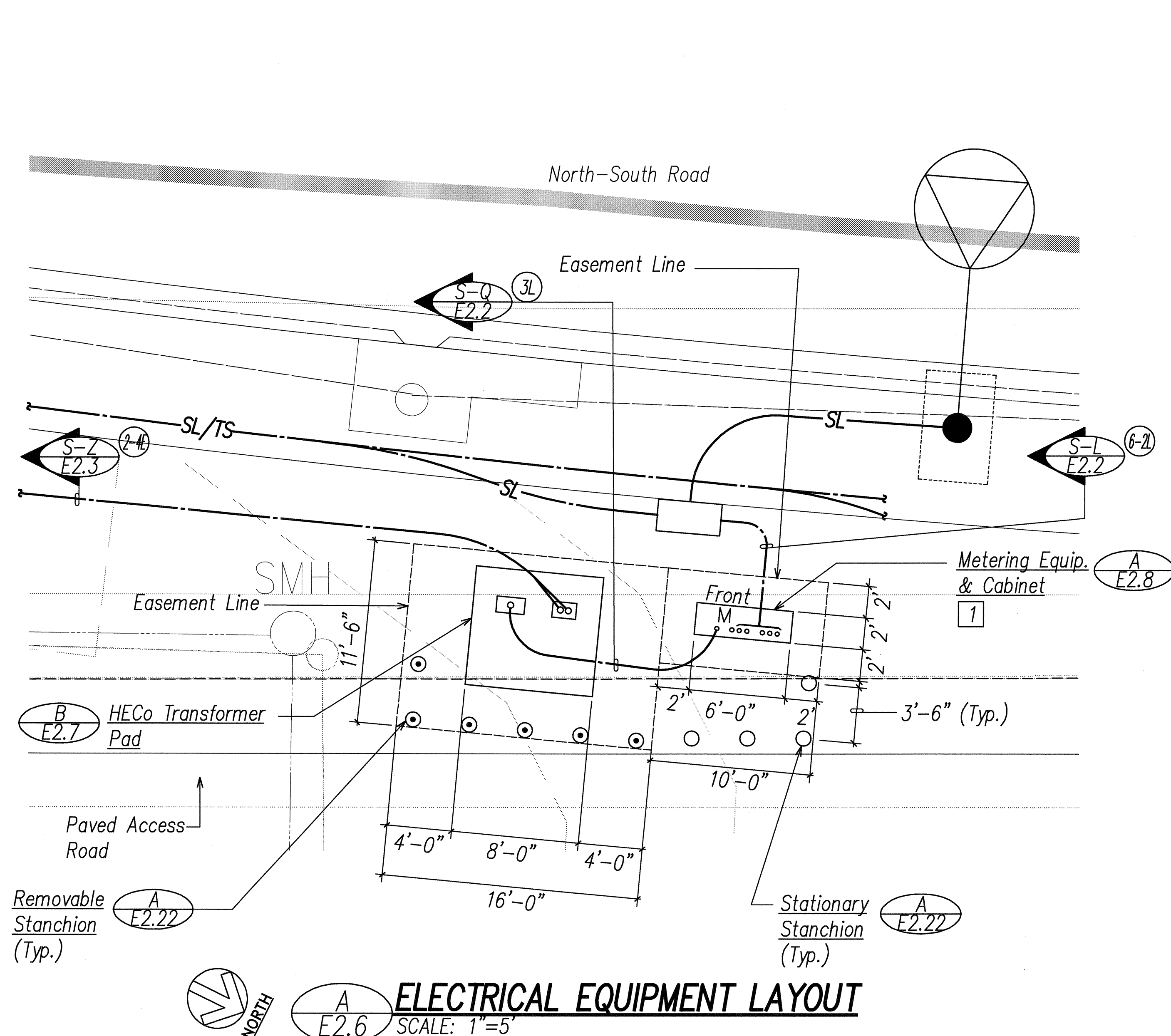
North-South Road
Phase 1B
F.A.I. Proj. No. STP-8930(2)

Scale: AS NOTED Date: Feb 21, 2007

SHEET No. E2.5 OF 62 SHEETS

286

FED. ROAD DIST. NO.	STATE	FED. AID PROJ. NO.	FISCAL YEAR	SHEET NO.	TOTAL SHEETS
HAWAII	HAW.	STP-8930(2)	2007	287	331



Notes:

1 Provide a minimum of four feet clear and level workspace clearance in front of metering and service equipment.

APPROVED BY:

HAWAIIAN ELECTRIC COMPANY, INC. DATE

North

ELECTRICAL EQUIPMENT LAYOUT

SCALE: 1"=5'

5' 2.5' 0 5' 10' 15'

SCALE: GRAPHIC SCALE

1"=5'

STATE OF HAWAII

DEPARTMENT OF TRANSPORTATION

HIGHWAYS DIVISION

ELECTRICAL EQUIPMENT LAYOUT II

North-South Road

Phase 1B

F.A.I. Proj. No. STP-8930(2)

Scale: AS NOTED Date: Feb 21, 2007

SHEET No. E2.6 OF 62 SHEETS

SURVEY PLOTTED BY	DATE
DRAWN BY	
DESIGNED BY	
CHECKED BY	
NO. 1	

LAST SAVE: 09/20/07 09:05:59 PM BY: E2.6 E2.7 E2.8 E2.9 E2.10 E2.11 E2.12 E2.13 E2.14 E2.15 E2.16 E2.17 E2.18 E2.19 E2.20 E2.21 E2.22 E2.23 E2.24 E2.25 E2.26 E2.27 E2.28 E2.29 E2.30 E2.31 E2.32 E2.33 E2.34 E2.35 E2.36 E2.37 E2.38 E2.39 E2.40 E2.41 E2.42 E2.43 E2.44 E2.45 E2.46 E2.47 E2.48 E2.49 E2.50 E2.51 E2.52 E2.53 E2.54 E2.55 E2.56 E2.57 E2.58 E2.59 E2.60 E2.61 E2.62 E2.63 E2.64 E2.65 E2.66 E2.67 E2.68 E2.69 E2.70 E2.71 E2.72 E2.73 E2.74 E2.75 E2.76 E2.77 E2.78 E2.79 E2.80 E2.81 E2.82 E2.83 E2.84 E2.85 E2.86 E2.87 E2.88 E2.89 E2.90 E2.91 E2.92 E2.93 E2.94 E2.95 E2.96 E2.97 E2.98 E2.99 E2.100