

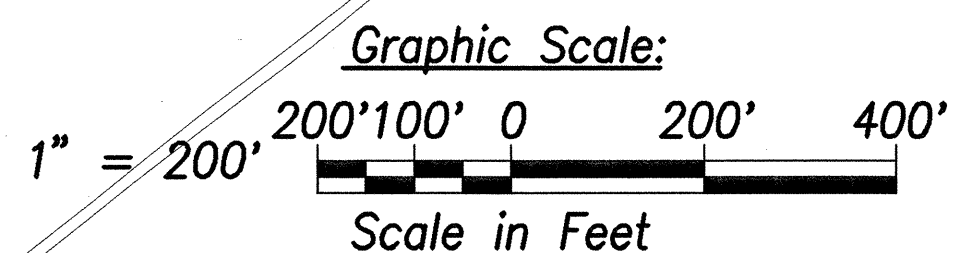
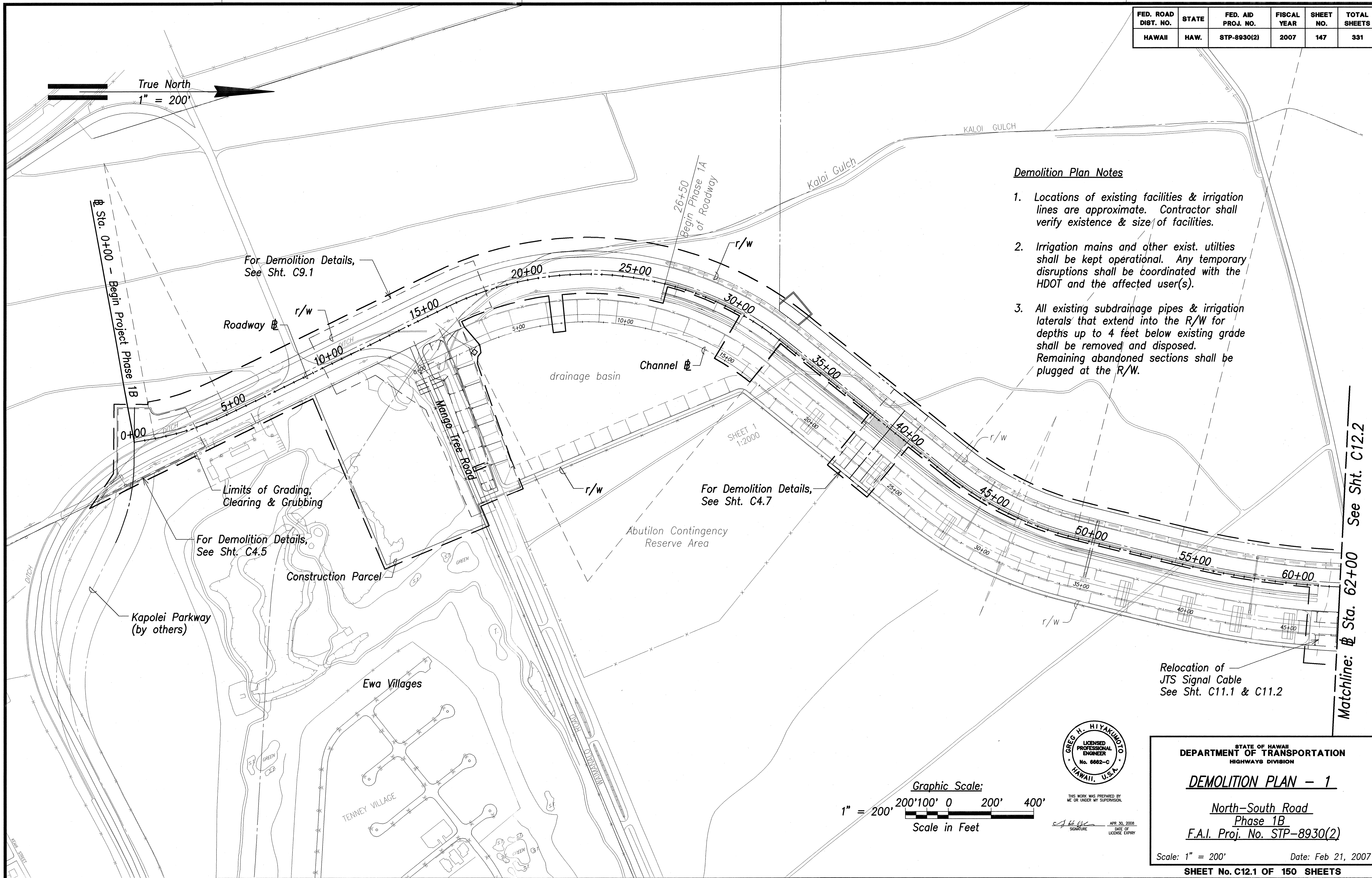
FED. ROAD DIST. NO.	STATE	FED. AID PROJ. NO.	FISCAL YEAR	SHEET NO.	TOTAL SHEETS
HAWAII	HAW.	STP-8930(2)	2007	147	331

True North  
1" = 200'

**Demolition Plan Notes**

1. Locations of existing facilities & irrigation lines are approximate. Contractor shall verify existence & size of facilities.
2. Irrigation mains and other exist. utilities shall be kept operational. Any temporary disruptions shall be coordinated with the HDOT and the affected user(s).
3. All existing subdrainage pipes & irrigation laterals that extend into the R/W for depths up to 4 feet below existing grade shall be removed and disposed. Remaining abandoned sections shall be plugged at the R/W.

SURVEY PLOTTED BY	DATE
DRAWN BY	
DESIGNED BY	
QUANTITIES BY	
CHECKED BY	
ORIGINAL PLAN	
NOTE BOOK	
No.	



THIS WORK WAS PREPARED BY ME OR UNDER MY SUPERVISION.  
SIGNATURE DATE OF LICENSE EXPIRY

STATE OF HAWAII  
DEPARTMENT OF TRANSPORTATION  
HIGHWAYS DIVISION

**DEMOLITION PLAN - 1**

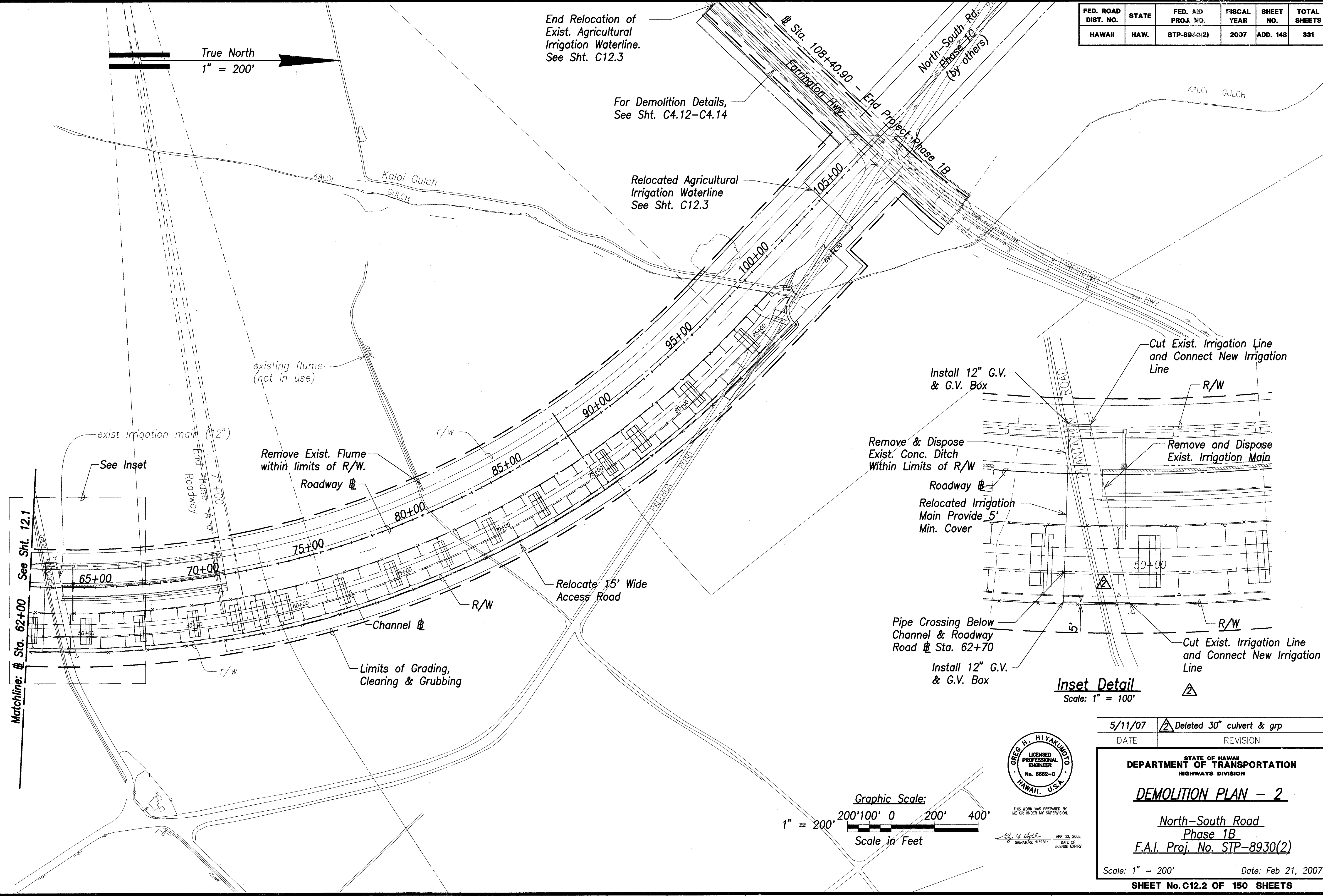
North-South Road  
Phase 1B  
F.A.I. Proj. No. STP-8930(2)

Scale: 1" = 200' Date: Feb 21, 2007

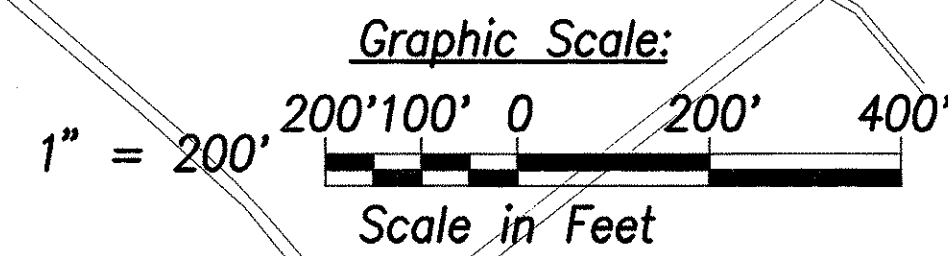
SHEET No. C12.1 OF 150 SHEETS

Matchline: @ Sta. 62+00 See Sht. C12.2

FED. ROAD DIST. NO.	STATE	FED. A&D PROJ. NO.	FISCAL YEAR	SHEET NO.	TOTAL SHEETS
HAWAII	HAW.	STP-8930(2)	2007	ADD. 148	331



ORIGINAL PLAN	DATE
NO. 1	5/11/07
DESIGNED BY	REVISION
CHECKED BY	2 Deleted 30" culvert & grp
QUANTITIES BY	
DATE	



5/11/07
2 Deleted 30" culvert & grp

DATE
REVISION

STATE OF HAWAII  
DEPARTMENT OF TRANSPORTATION  
HIGHWAYS DIVISION

**DEMOLITION PLAN - 2**  
  
North-South Road  
Phase 1B  
F.A.I. Proj. No. STP-8930(2)

Scale: 1" = 200'
Date: Feb 21, 2007

SHEET No. C12.2 OF 150 SHEETS