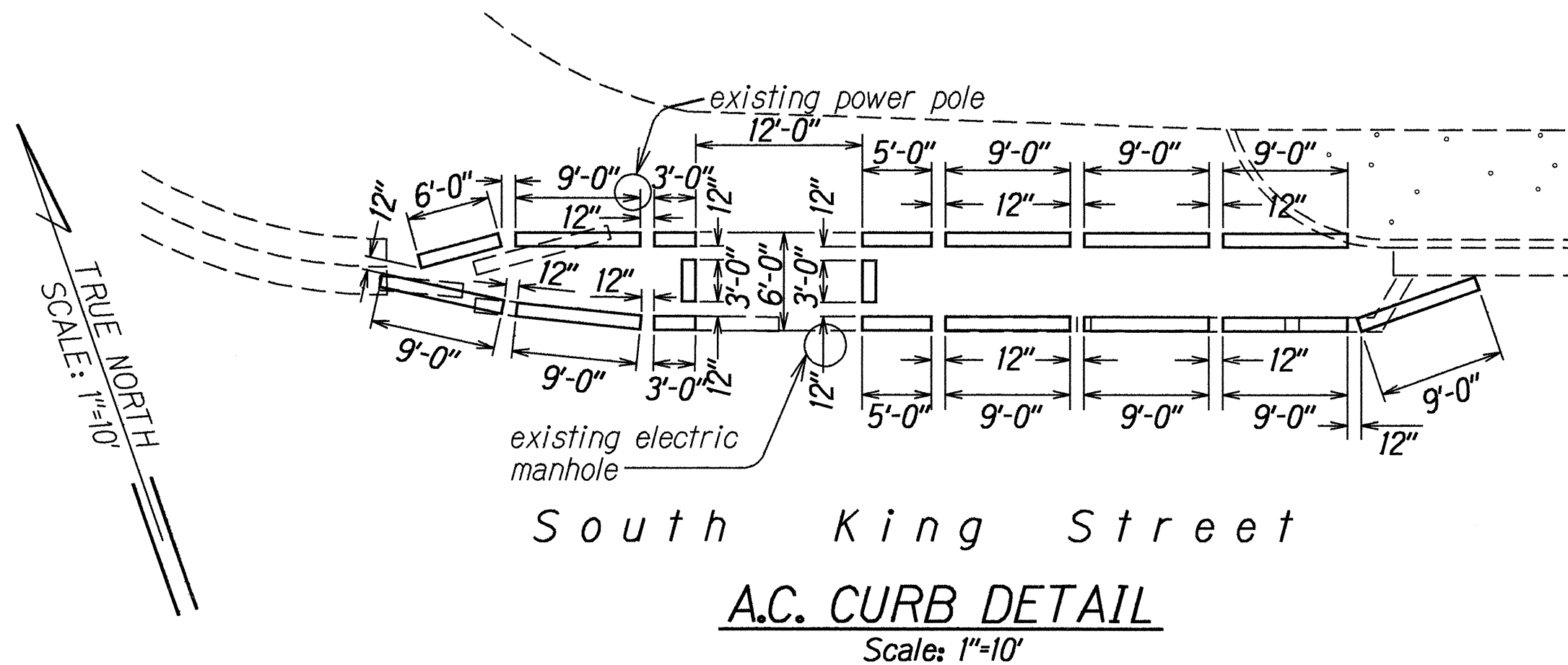
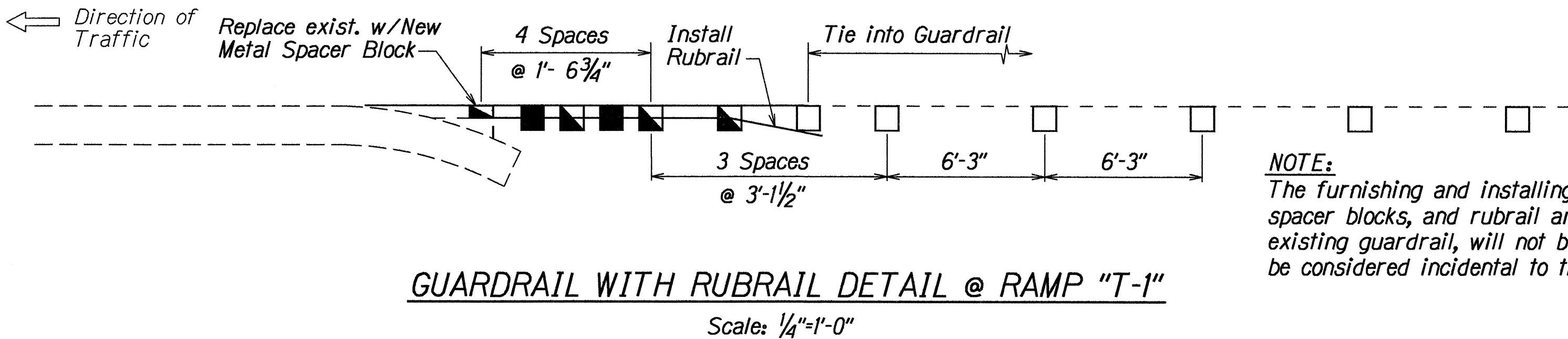
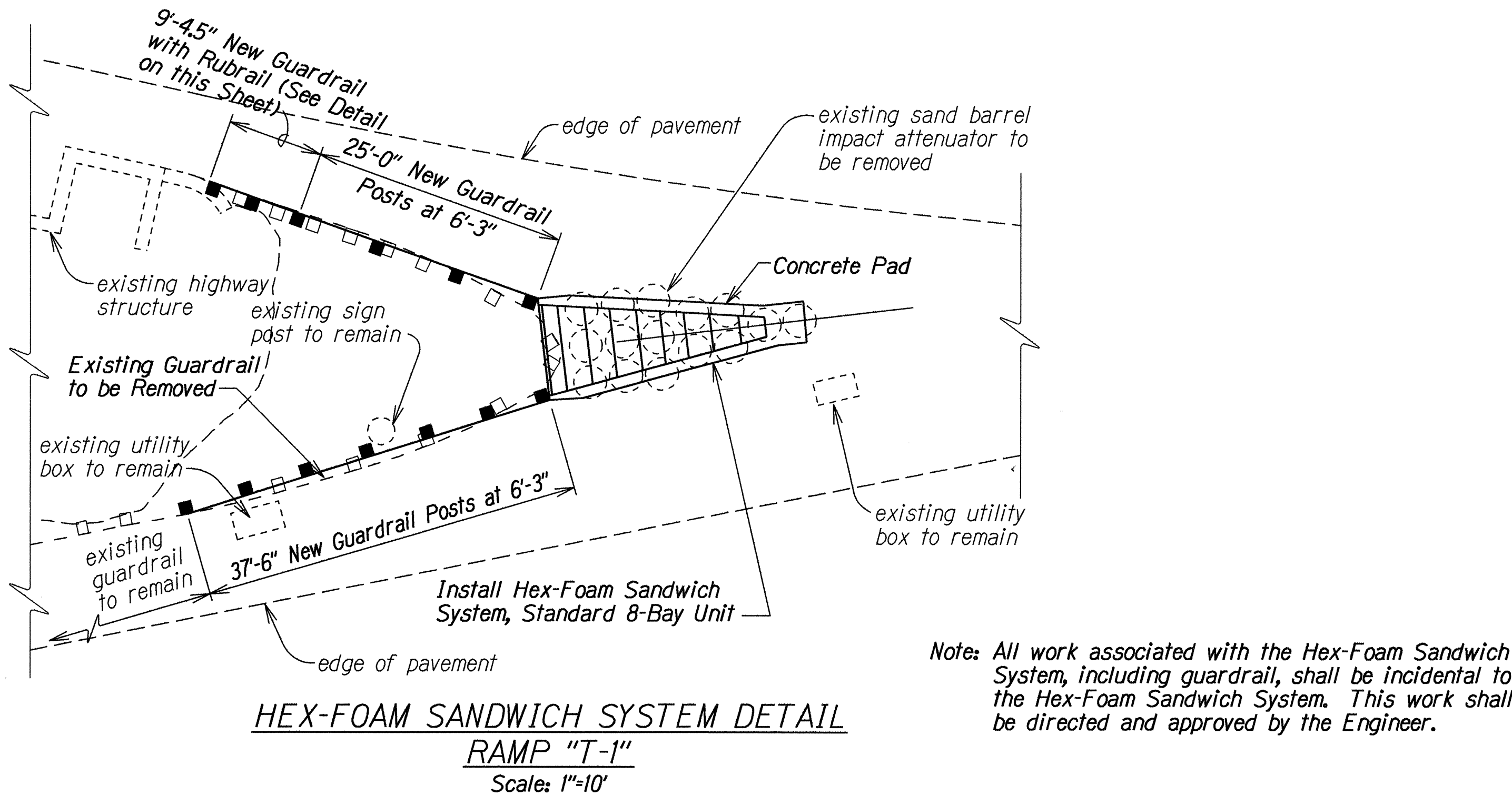
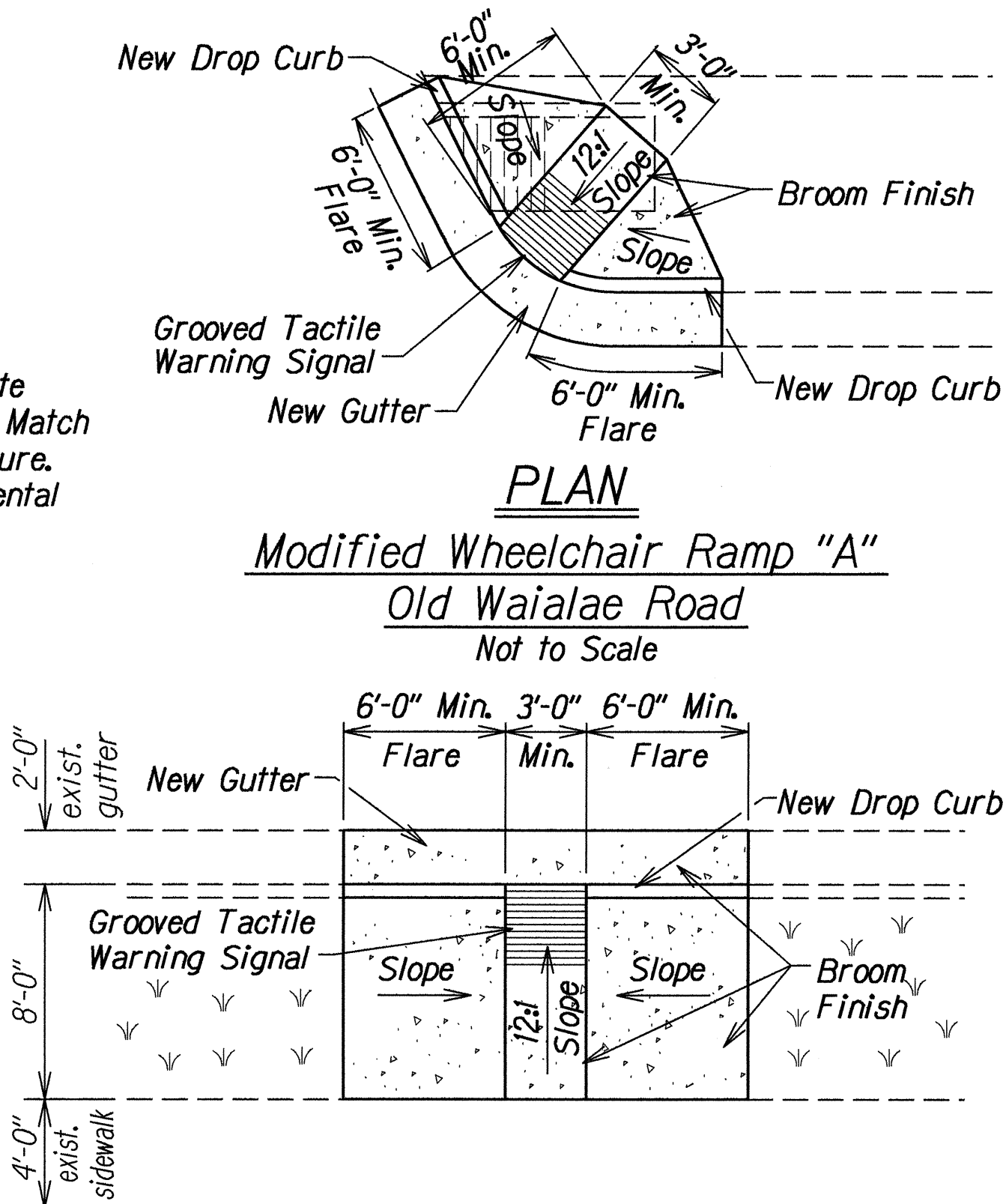
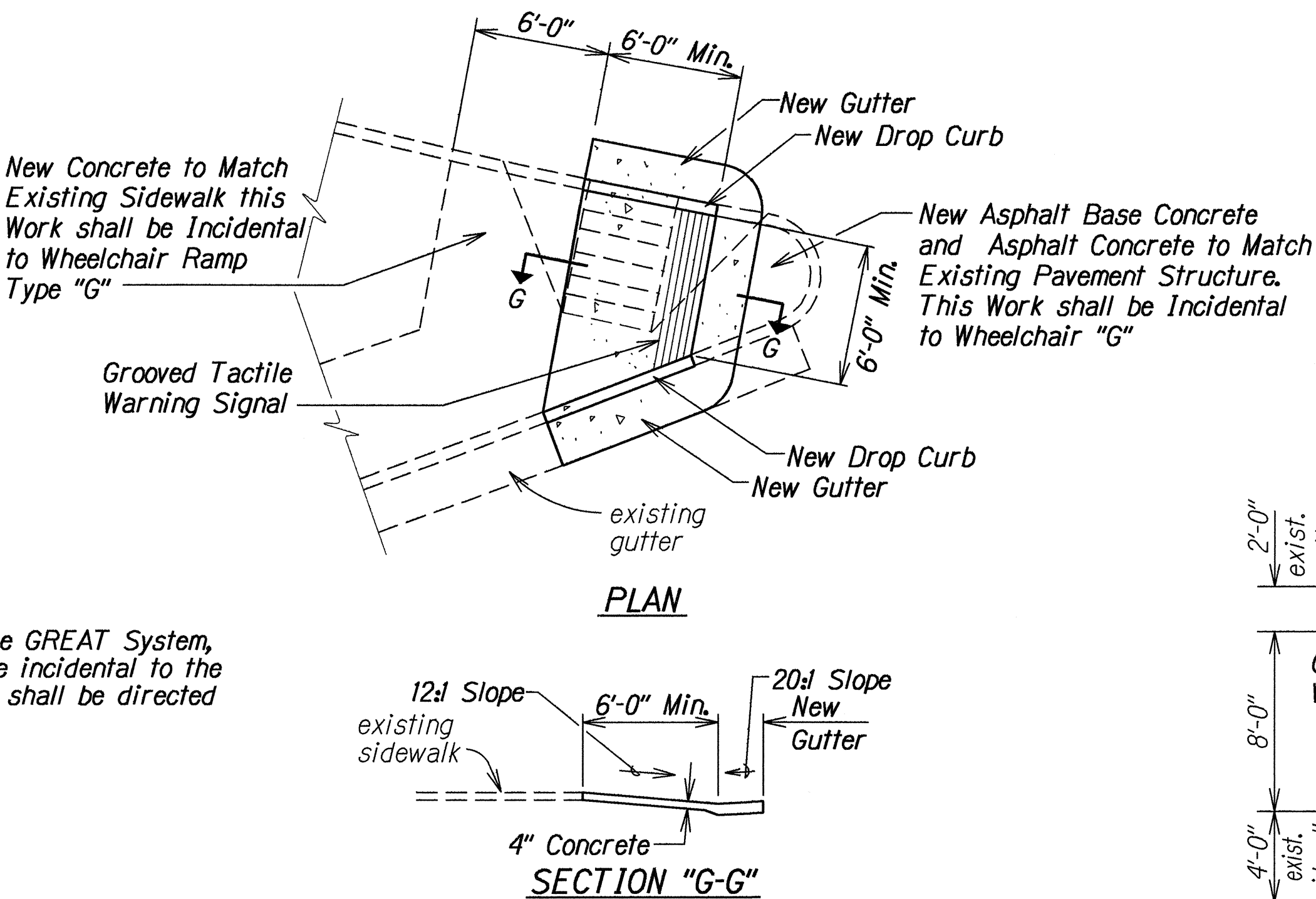
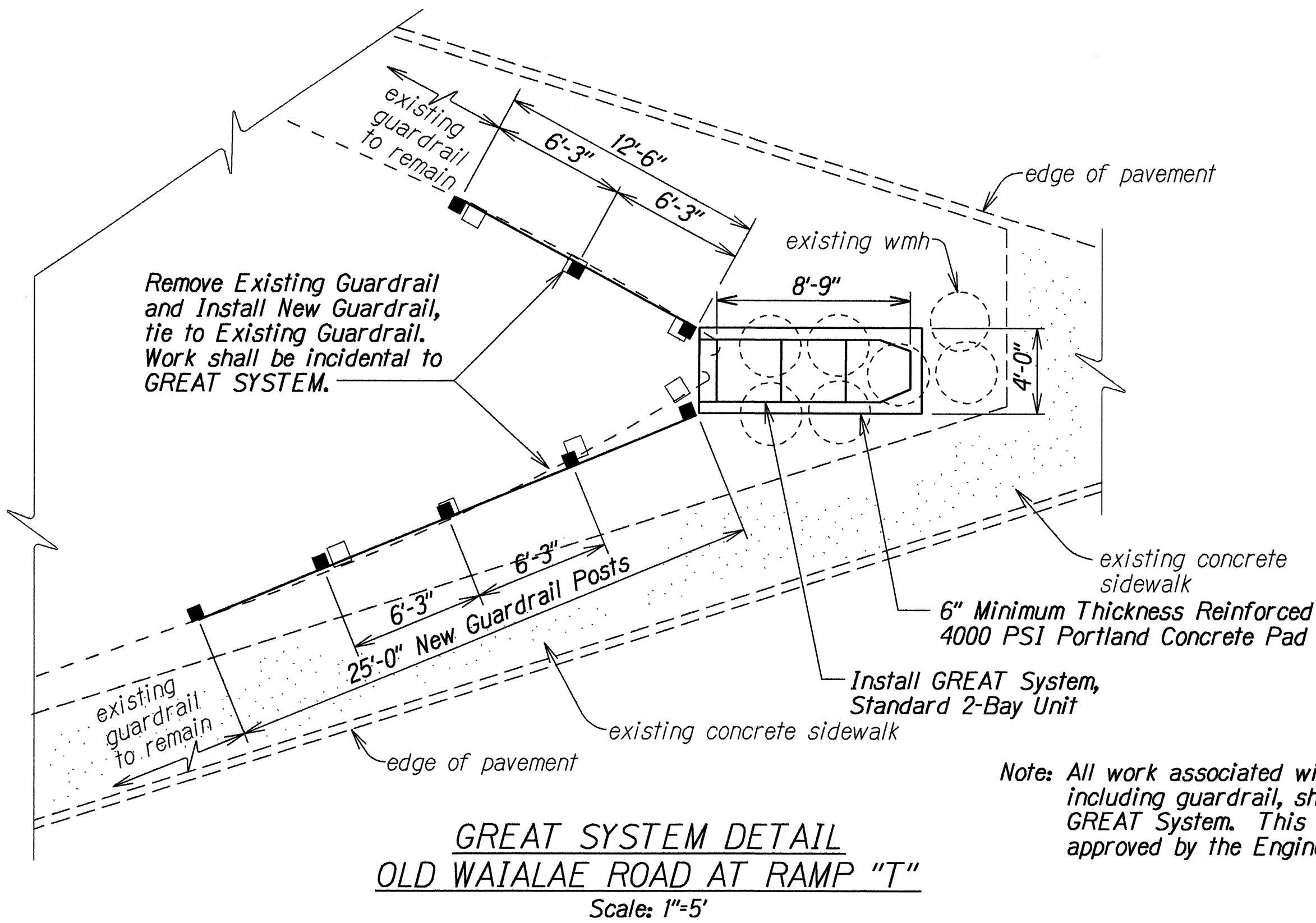


FED. ROAD DIST. NO.	STATE	FED. AID PROJ. NO.	FISCAL YEAR	SHEET NO.	TOTAL SHEETS
HAWAII	HAW.	STP-0300(30)	1994	6	18



STATE OF HAWAII DEPARTMENT OF TRANSPORTATION HIGHWAYS DIVISION	
<b>DETAILS</b>	
<b>H-1 KAPIOLANI INTERCHANGE RAMPS AND OLD WAIALAE ROAD RESURFACING</b>	
Federal Aid Project No. STP-0300(30)	
Scale: As Shown	Date: Sept., 1993
SHEET No. 1 OF 1 SHEETS	

ORIGINAL PLAN	DATE: 12-24-94
SURVEY PLANNED BY: G. M. M. M.	
DRAWN BY: G. M. M. M.	
DESIGNED BY: G. M. M. M.	
CHECKED BY: G. M. M. M.	