

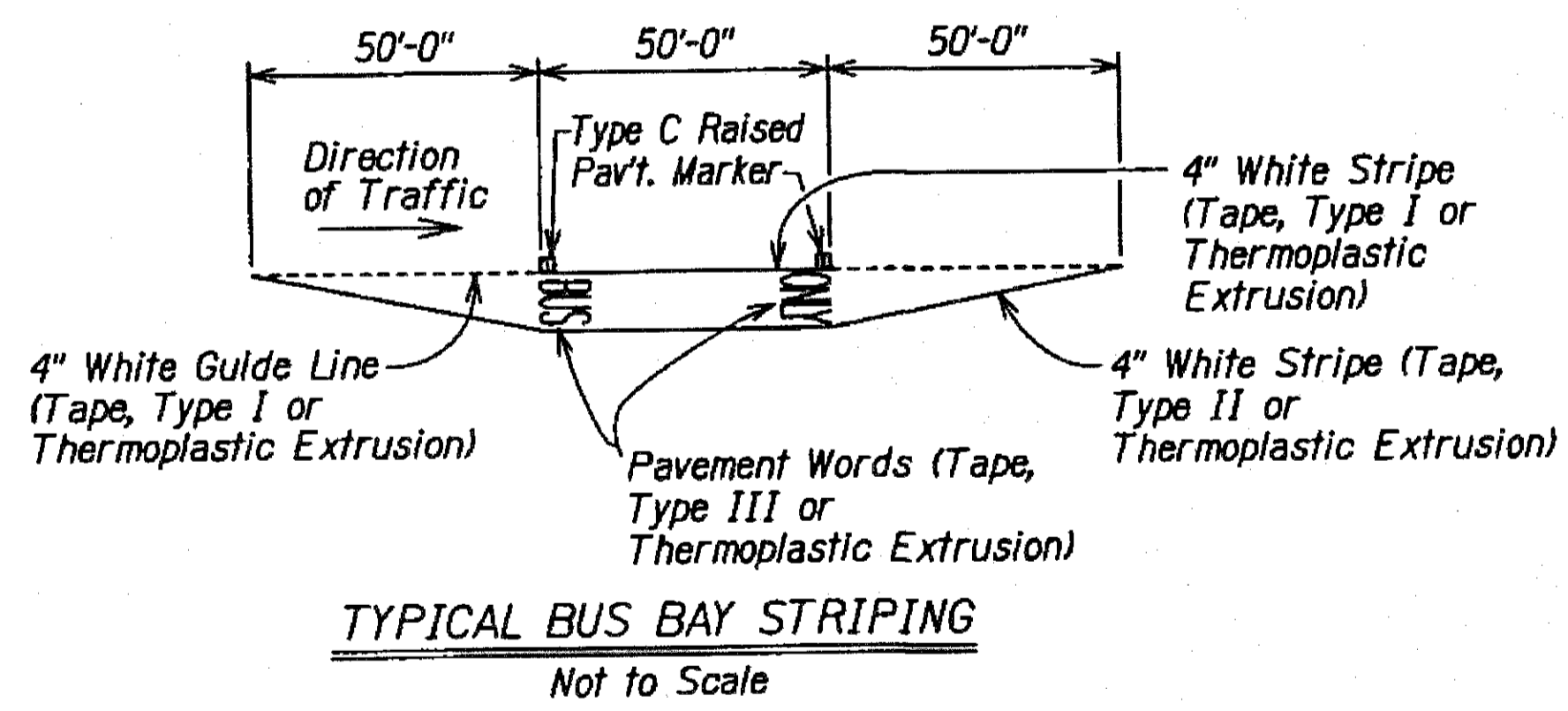
FED. ROAD DIST. NO.	STATE	FEDERAL AID PROJ. NO.	FISCAL YEAR	SHEET NO.	TOTAL SHEETS
HAWAII	HAW.	STP-7415(001)	2014	C.O. 47	173

**LEGEND**

- 4 each Type A Raised Pavement Markers
- Type C Raised Pavement Markers @ 40'-0" o.c.
- 8" White Stripe with Type C Raised Pavement Markers @ 20'-0" o.c. (Tape, Type I or Thermoplastic Extrusion)
- 4" Double Solid Yellow with Type D Raised Pavement Markers @ 20'-0" o.c. (Tape, Type I or Thermoplastic Extrusion)
- 4" Double Solid Yellow Stripes with Type H Raised Pavement Markers @ 20'-0" o.c. (Tape, Type II or Thermoplastic Extrusion)
- 4" Yellow Edge Stripe with Type H Raised Pavement Markers @ 40'-0" o.c. (Tape, Type II or Thermoplastic Extrusion)
- Lane Change Restriction Marking
- 4 each Type A Raised Pavement Markers
- Type C Raised Pavement Markers @ 20'-0" o.c.
- 4" White Stripe (Tape, Type I or Thermoplastic Extrusion)
- 4" White Edge Stripe with Type C Raised Pavement Markers @ 40'-0" o.c. (Tape, Type II or Thermoplastic Extrusion)
- 4" White Guide Lines (Tape, Type III or Thermoplastic Extrusion except for bus bays)
- Transverse Median Marking (Tape, Type II or Thermoplastic Extrusion)
- Transverse Shoulder Marking (Tape, Type II or Thermoplastic Extrusion)
- Channelizing Island or Deceleration Lane Gore (Tape, Type II or Thermoplastic Extrusion)
- Crosswalk and Stop Line. All Stop Lines shall be 10'-0" from Crosswalk unless otherwise noted. (Type, Type III or Thermoplastic Extrusion)
- Pavement Arrow (Tape, Type III or Thermoplastic Extrusion) with 2" Black Border
- STOP Pavement Word (Tape, Type III or Thermoplastic Extrusion)
- Extension of Edge Line, 4" Wide x 2-0" Long White Stripe @ 10'-0" o.c. w/Type C Markers @ 40'-0" o.c. (Tape, Type III or Thermoplastic Extrusion)
- Type F Raised Pavement Marker
- Yield Line
- Median Nose Delineation See Std. Plan TE-26

**NOTES**

1. Layout of pavement markings and striping shall be done by the Contractor and approved by the Engineer prior to any installation work.
2. Existing pavement markings not incorporated in the final traffic pattern shall be removed as directed by the Engineer. Costs shall be incidental to the various pavement marking items.
3. Raised pavement markers shall not be installed within crosswalks.
4. Final locations of all signs shall be approved by the Engineer prior to any installation work.
5. Existing signs not shown on these plans shall remain as posted unless otherwise directed by the Engineer. Removal and disposal of existing signs and/or posts as designated on these plans shall be incidental to the various signing items.
6. Final locations of all Stop Lines shall be approved by the Engineer prior to installation.
7. All pavement striping shall be as noted on the legend or plans.
8. All preformed pavement marking tapes over existing pavement shall be applied with an approved primer as recommended by the tape manufacturer and as approved by the Engineer. The primer shall be allowed to dry to the tacky stage prior to tape application.
9. All existing sign post(s) to remain within the sidewalk area shall meet the minimum clear width of 36 inches from the sidewalk edge. Where necessary, the existing sign post(s) shall be relocated to meet the minimum clear width. This work shall not be paid for separately but shall be considered incidental to the various contract items.
10. Contractor shall verify locations of fire hydrants prior to installation of Type F raised pavements markers.



DESIGNED BY: [ ]  
 DRAWN BY: [ ]  
 CHECKED BY: [ ]  
 DATE: [ ]  
 PROJECT: [ ]  
 SHEET: [ ] OF [ ]

9/30/14	Added 2" Black Border to Pavement Arrow
Date	Revision

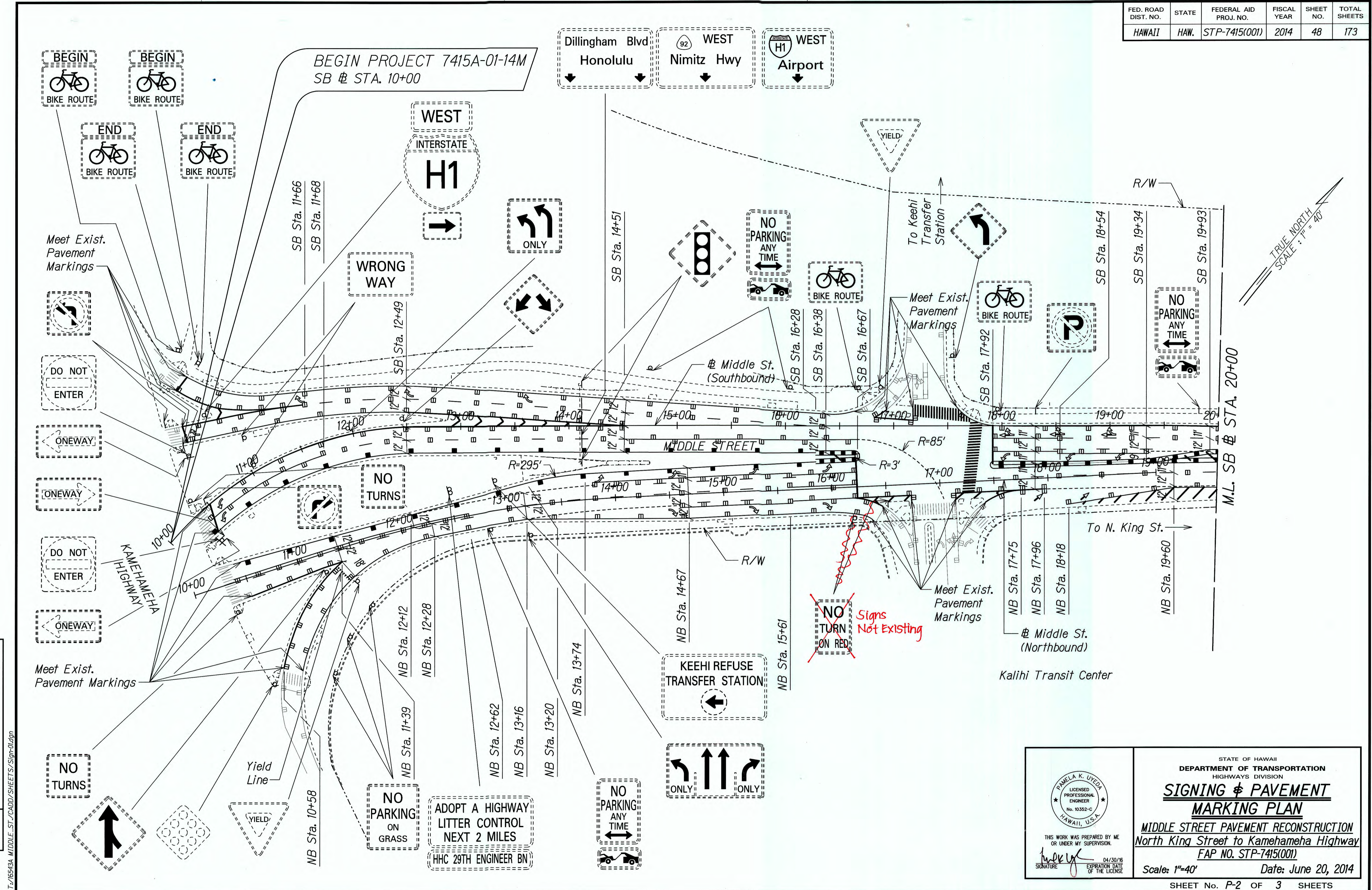
STATE OF HAWAII  
DEPARTMENT OF TRANSPORTATION  
HIGHWAYS DIVISION

**SIGNING AND PAVEMENT MARKING**  
**LEGEND, DETAILS AND NOTES**

MIDDLE STREET PAVEMENT RECONSTRUCTION  
North King Street to Kamehameha Highway  
FAP NO. STP-7415(001)

Scale: None Date: June 20, 2014

FED. ROAD DIST. NO.	STATE	FEDERAL AID PROJ. NO.	FISCAL YEAR	SHEET NO.	TOTAL SHEETS
HAWAII	HAW.	STP-7415(001)	2014	48	173



DATE	_____
SURVEY PLOTTED BY	_____
DESIGNED BY	_____
TRACED BY	_____
NOTED BY	_____
QUANTITIES BY	_____
CHECKED BY	_____
NO.	_____

T-1/66543A MIDDLE ST./CADD/SHEETS/Sign-04.dgn

THIS WORK WAS PREPARED BY ME OR UNDER MY SUPERVISION.

*P. Uyeda*  
SIGNATURE

04/30/16  
EXPIRATION DATE OF THE LICENSE

STATE OF HAWAII  
DEPARTMENT OF TRANSPORTATION  
HIGHWAYS DIVISION

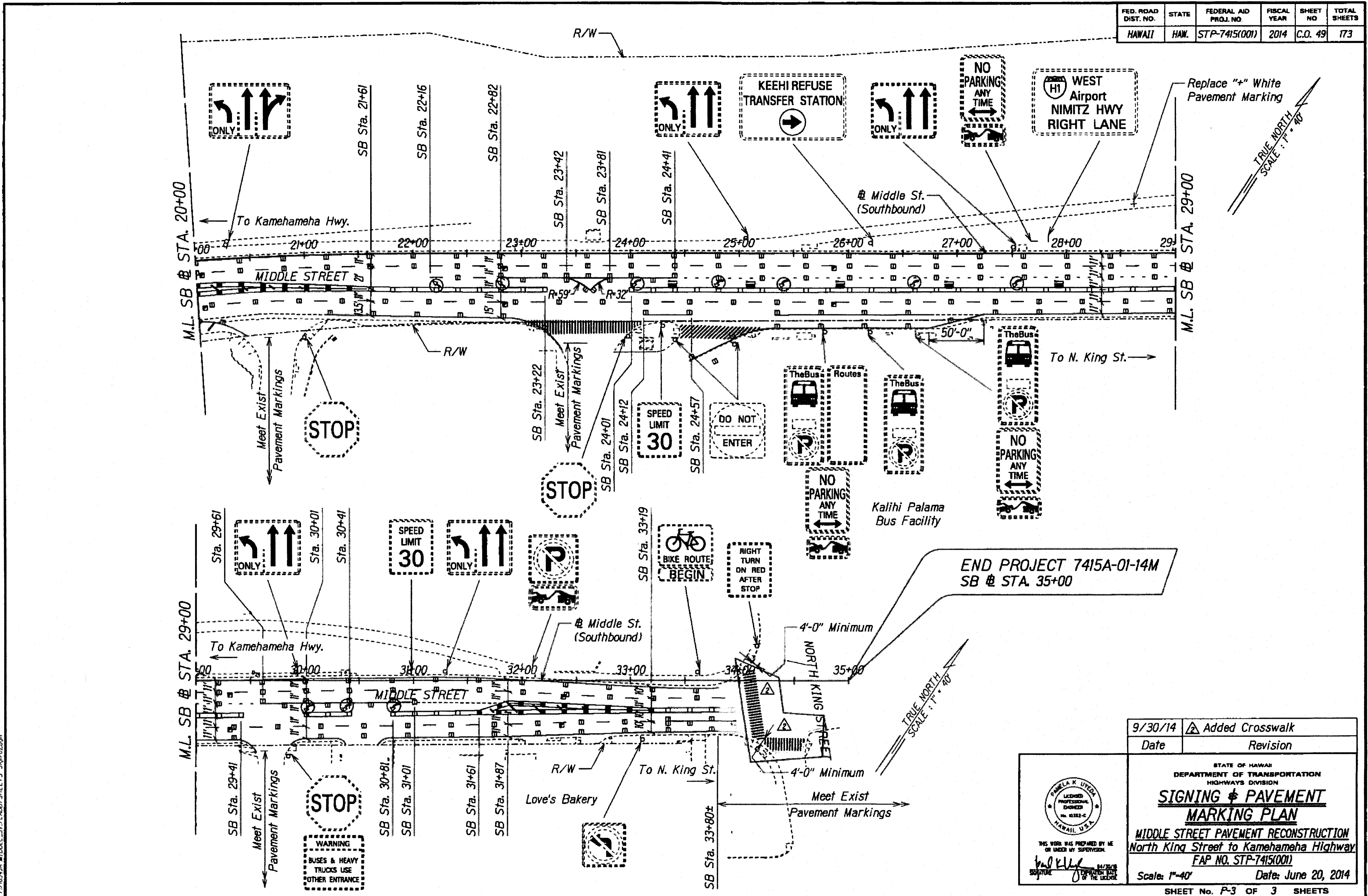
**SIGNING & PAVEMENT MARKING PLAN**

MIDDLE STREET PAVEMENT RECONSTRUCTION  
North King Street to Kamehameha Highway  
FAP NO. STP-7415(001)

Scale: 1"=40'      Date: June 20, 2014

"AS-BUILT"

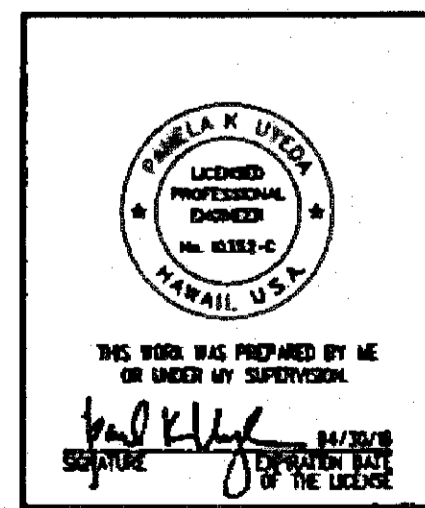
FED. ROAD DIST. NO.	STATE	FEDERAL AID PROJ. NO.	FISCAL YEAR	SHEET NO.	TOTAL SHEETS
HAWAII	HAW.	STP-7415(001)	2014	C.O. 49	173



DESIGNED BY	DATE
DRAWN BY	
CHECKED BY	
IN CHARGE BY	
APPROVED BY	

T:\65434 MIDDLE ST./CADD/SHEETS\_Sign-02.dgn

9/30/14	Added Crosswalk
Date	Revision



STATE OF HAWAII  
DEPARTMENT OF TRANSPORTATION  
HIGHWAYS DIVISION  
**SIGNING & PAVEMENT MARKING PLAN**  
MIDDLE STREET PAVEMENT RECONSTRUCTION  
North King Street to Kamehameha Highway  
FAP NO. STP-7415(001)  
Scale: 1"=40' Date: June 20, 2014

SHEET No. P-3 OF 3 SHEETS

C.O. 49