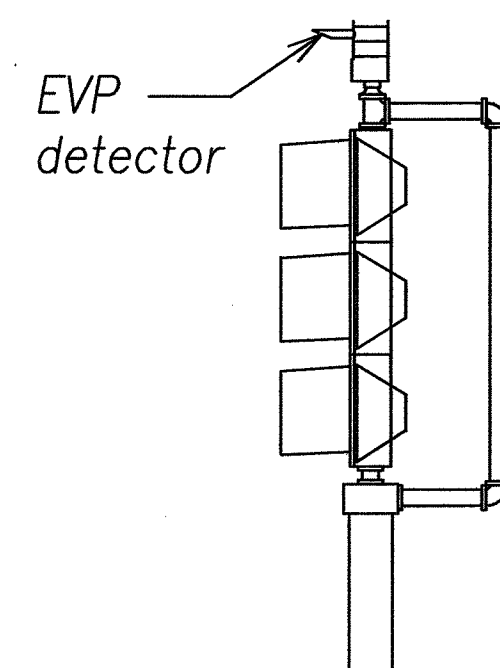
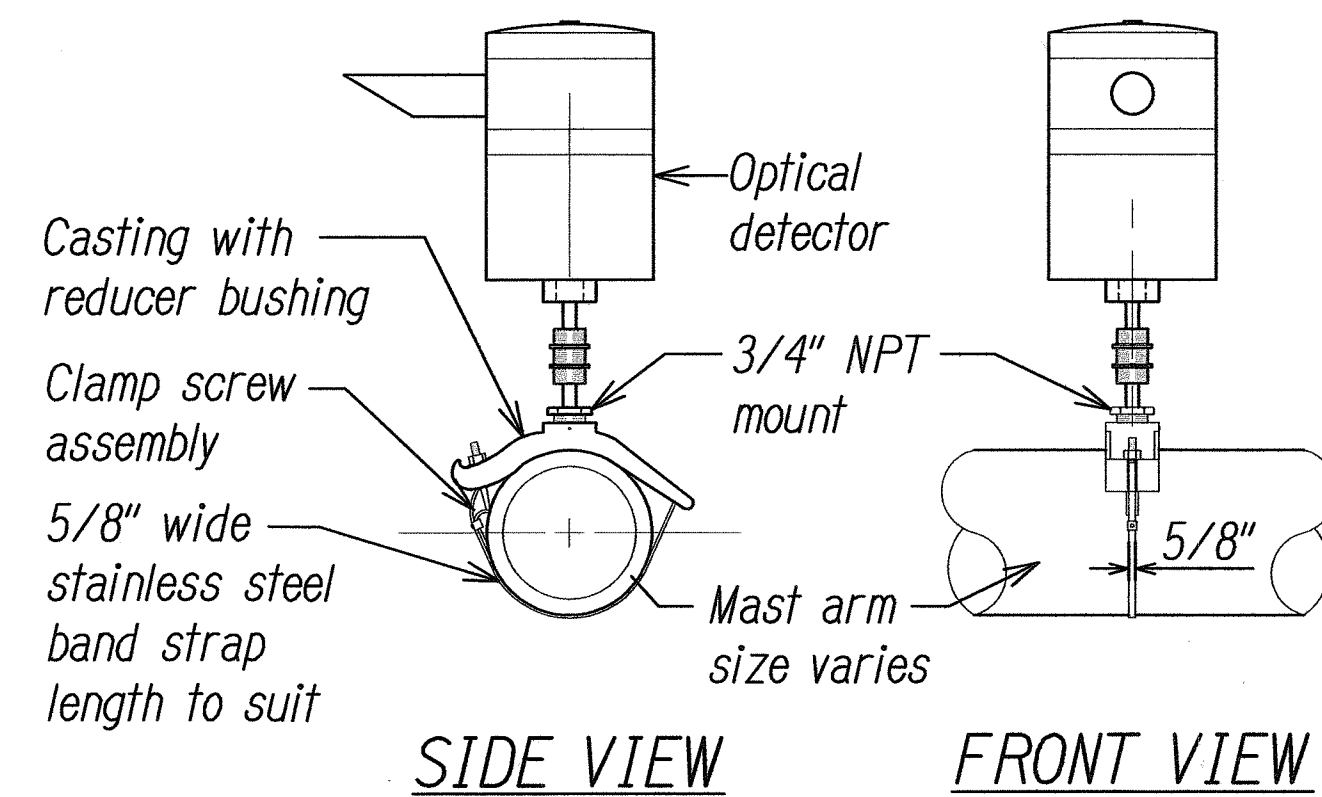


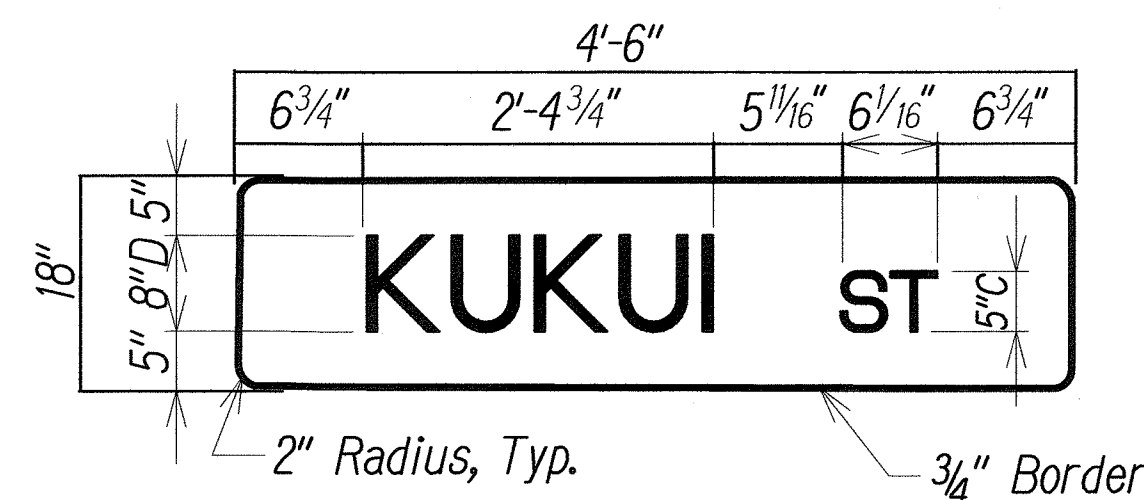
FED. ROAD DIST. NO.	STATE	FED. AID PROJ. NO.	FISCAL YEAR	SHEET NO.	TOTAL SHEETS
HAWAII	HAW.	HSIP-7413(2)	2011	ADD.19	29



**POST TOP
TP-EVP MOUNTING**
NOT TO SCALE

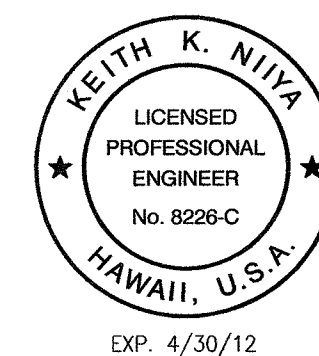
- NOTES:**
- Optical detector shall be "Model 711 preemption detector", or approved equal, unless noted otherwise in the special provisions.
 - Support saddle assembly shall be "ASTRO MINI-BRAC, AB-0132-29", or approved equal, unless noted otherwise in the special provisions.

**OPTICAL DETECTOR FOR
MAST ARM MOUNTING**
NOT TO SCALE



STREET NAME SIGN DETAILS
NOT TO SCALE

SURVEY PLOTTED BY	DATE
DESIGNED BY	
NOTED BY	
CHECKED BY	
ORIGINAL PLAN	
NOTE BOOK	
No.	



This work was prepared by me or under my supervision and construction of this project will be under my observation. (Observation of construction as defined in Chapter 16-115 Subchapter 1 Definitions of the Hawaii Administrative Rules "Professional Engineers, Architects, Surveyors, and Landscape Architects.")

9/14/11	REV. UPPER RT. CORNER BLOCK; ADDED SHT. NUMBER
DATE	REVISION
STATE OF HAWAII DEPARTMENT OF TRANSPORTATION HIGHWAYS DIVISION	
TRAFFIC SIGNAL MISCELLANEOUS DETAILS	
LILIHA STREET TRAFFIC SIGNAL AT KUKUI STREET FEDERAL AID PROJECT NO. HSIP-7413(2)	
Scale: As Noted	Date: July 2011

SHEET No. 19 OF 29 SHEETS

ADD. 19