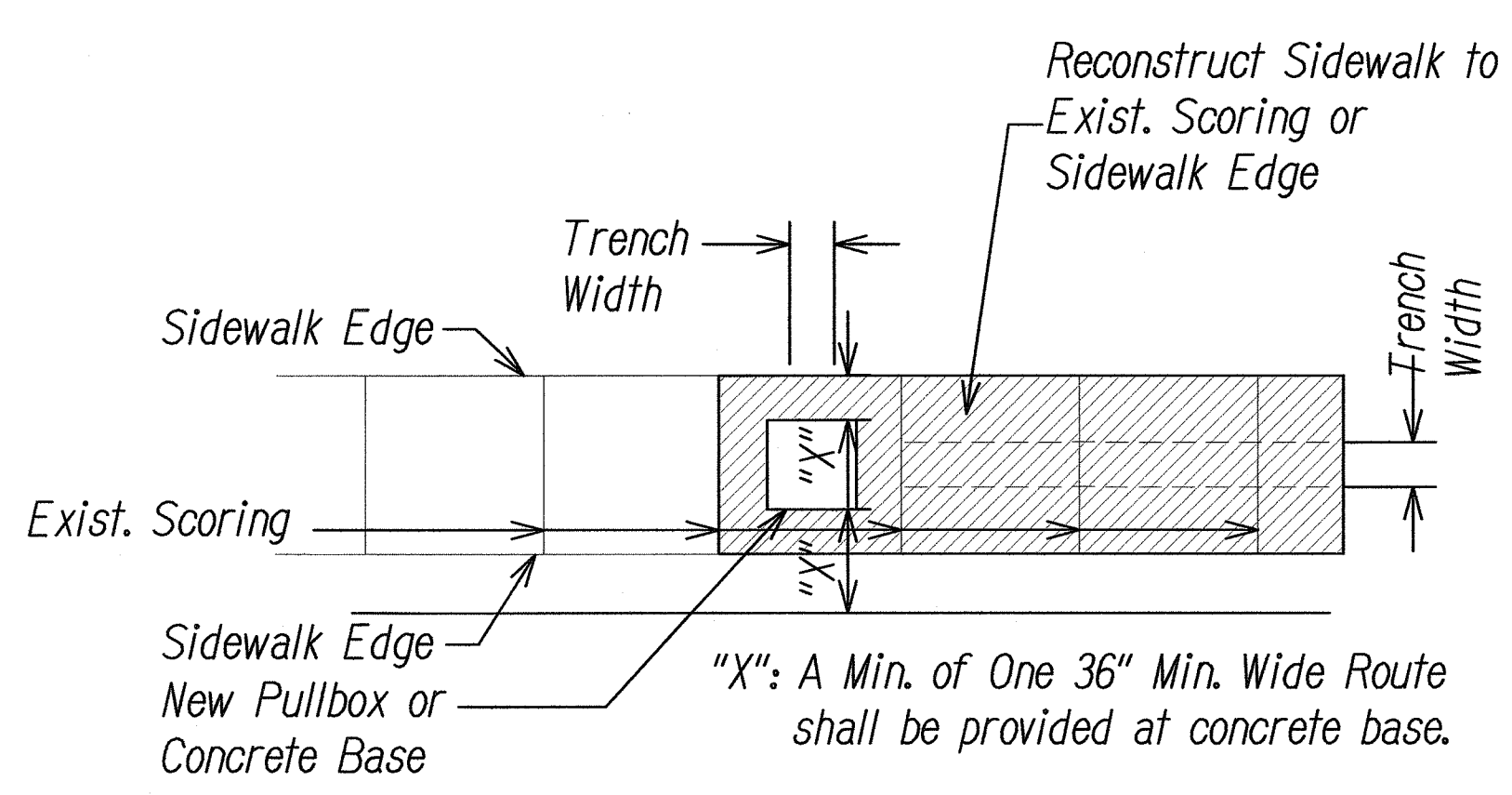
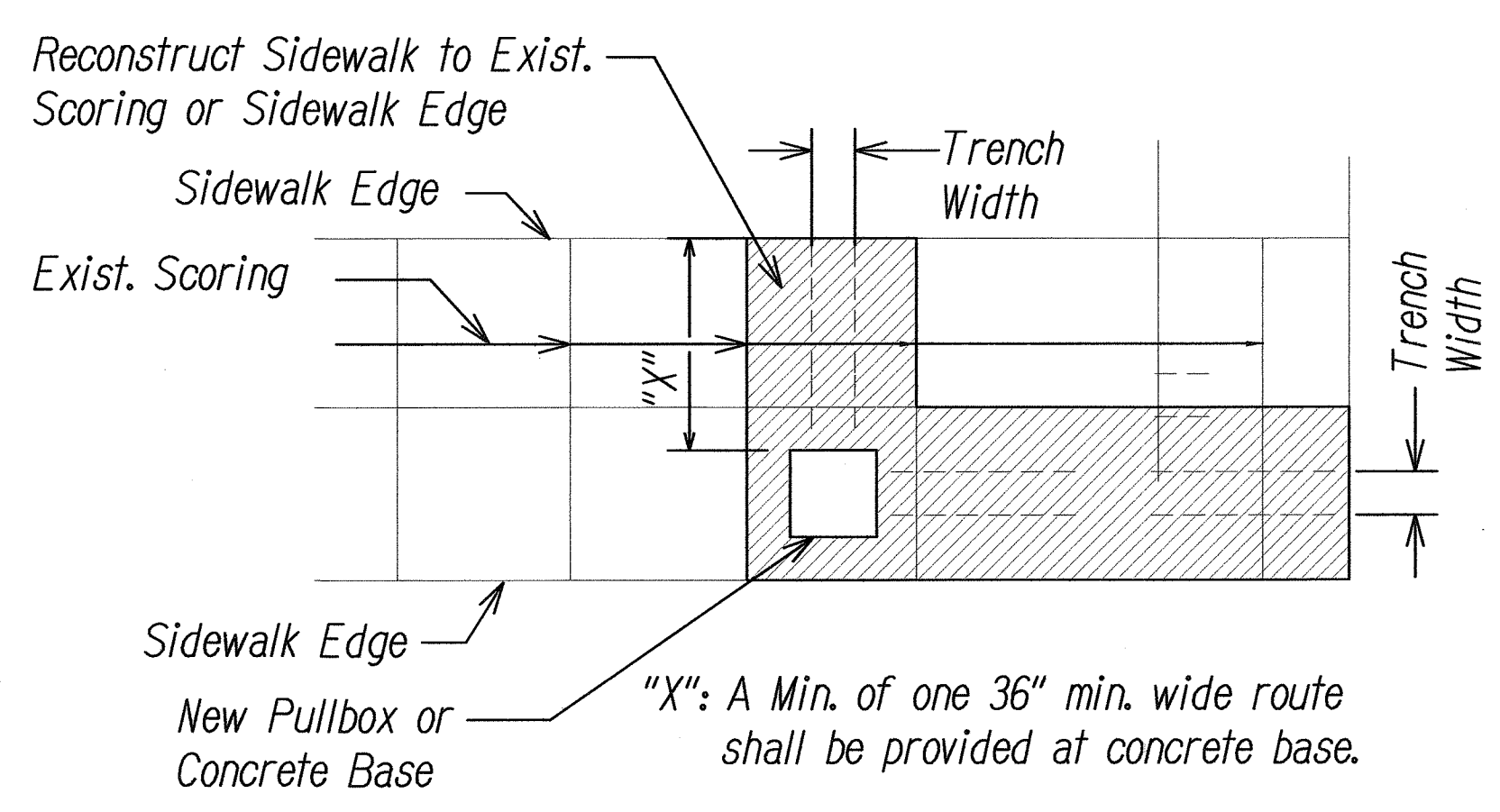
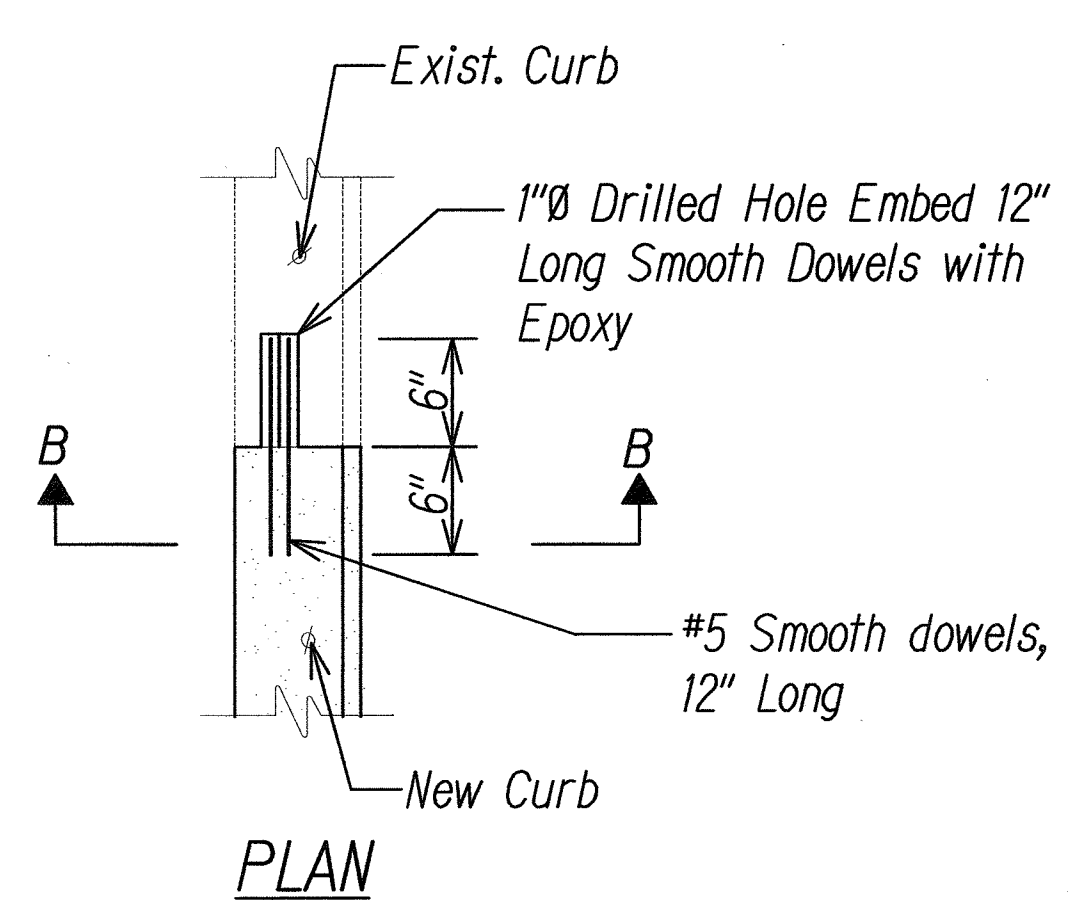
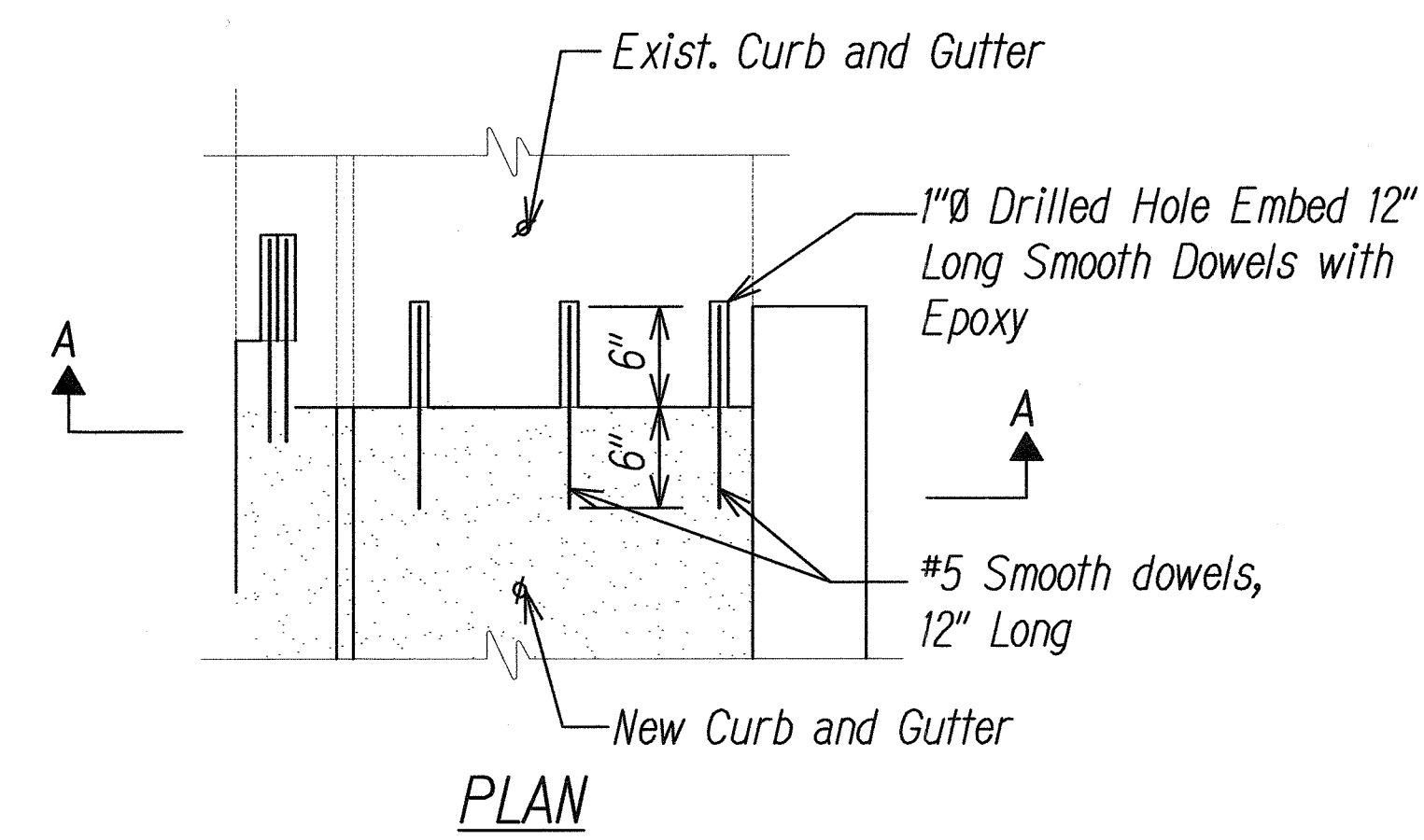


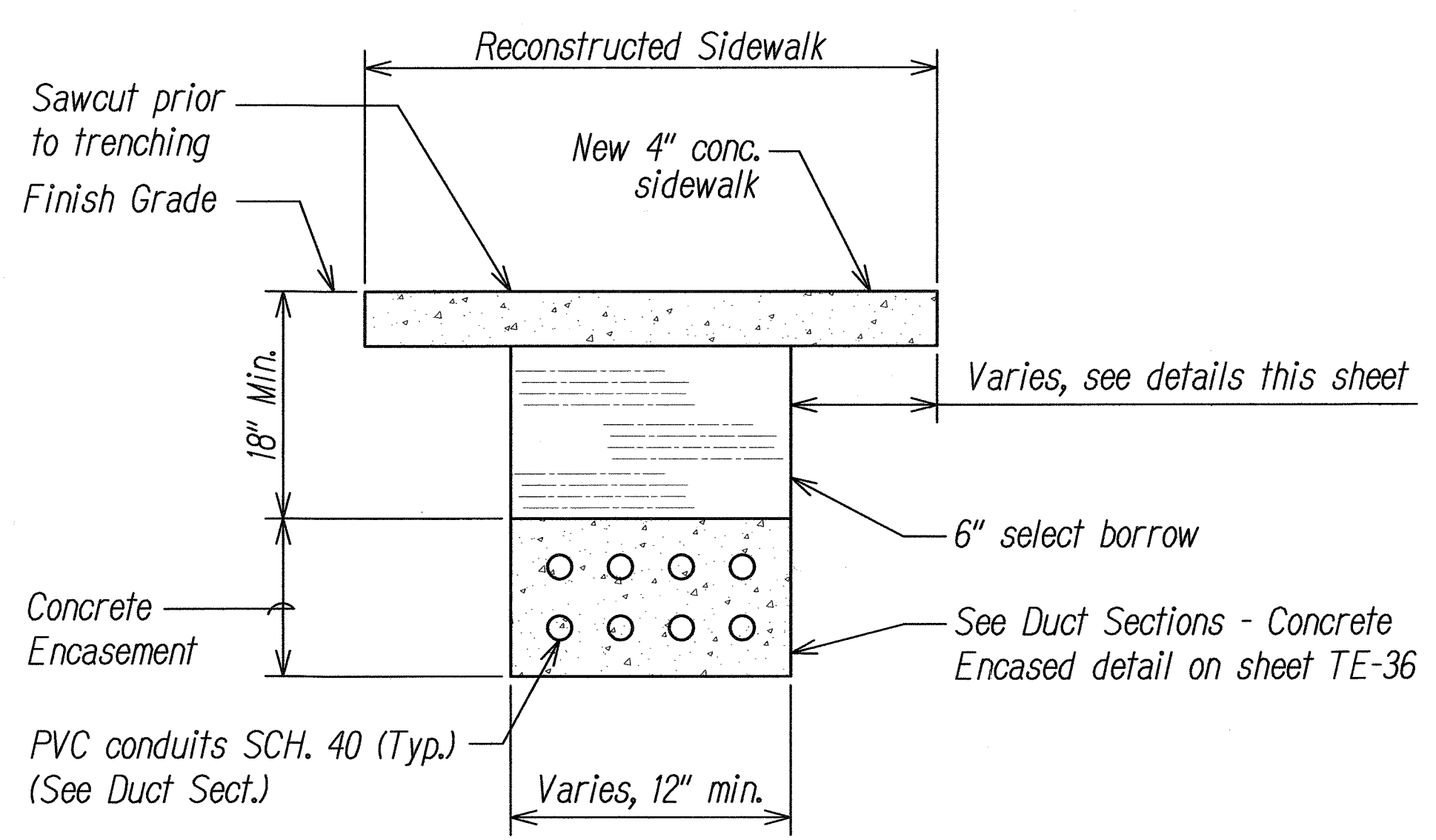
FED. ROAD DIST. NO.	STATE	FED. AID PROJ. NO.	FISCAL YEAR	SHEET NO.	TOTAL SHEETS
HAWAII	HAW.	HSIP-7413(2)	2011	ADD.20	29



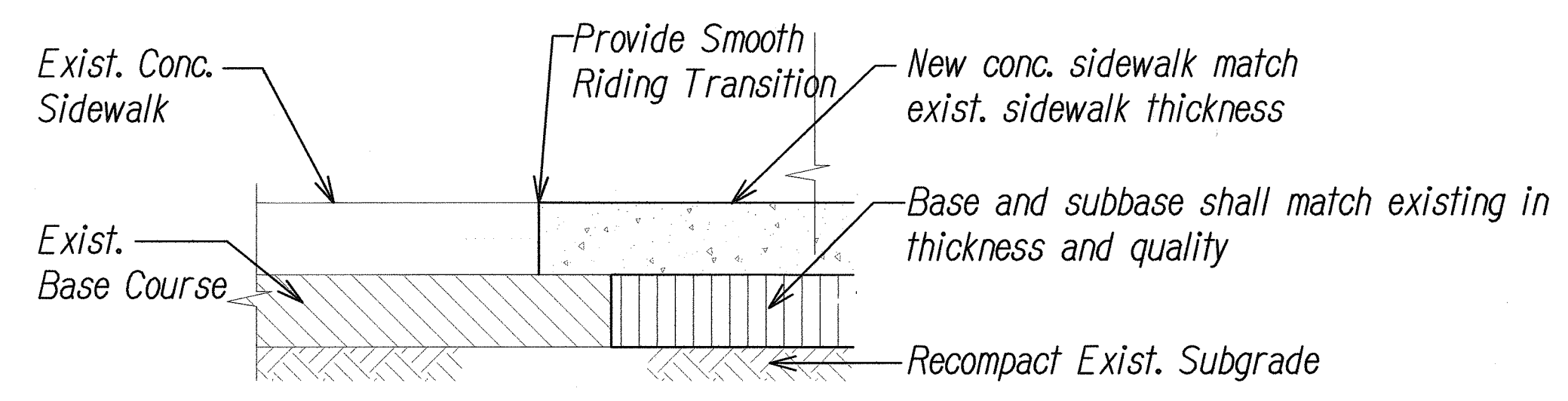
AT MULTIPLE BLOCK-WIDTH SIDEWALKS

AT SINGLE BLOCK-WIDTH SIDEWALKS

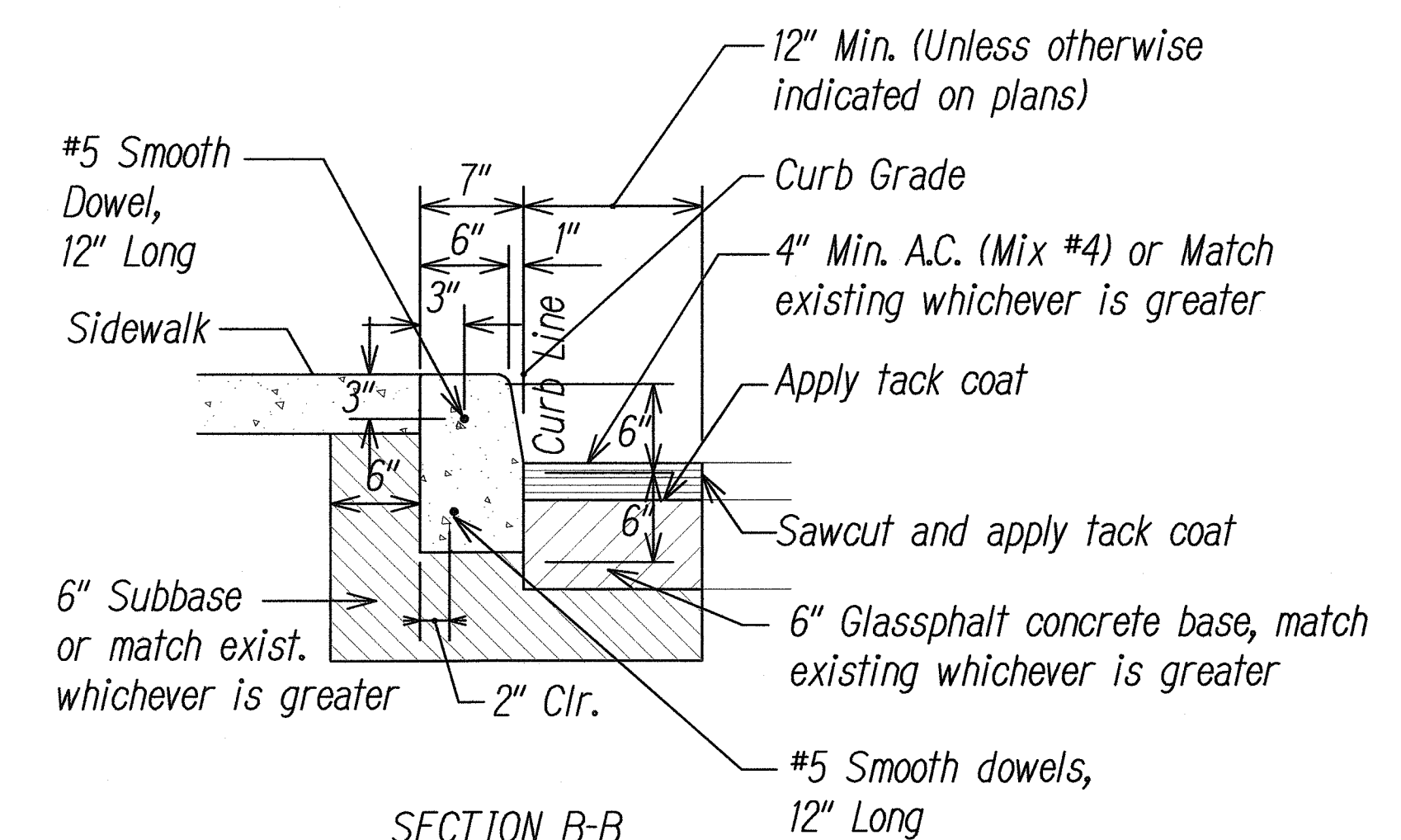
**SIDEWALK RECONSTRUCTION DETAILS**  
NOT TO SCALE



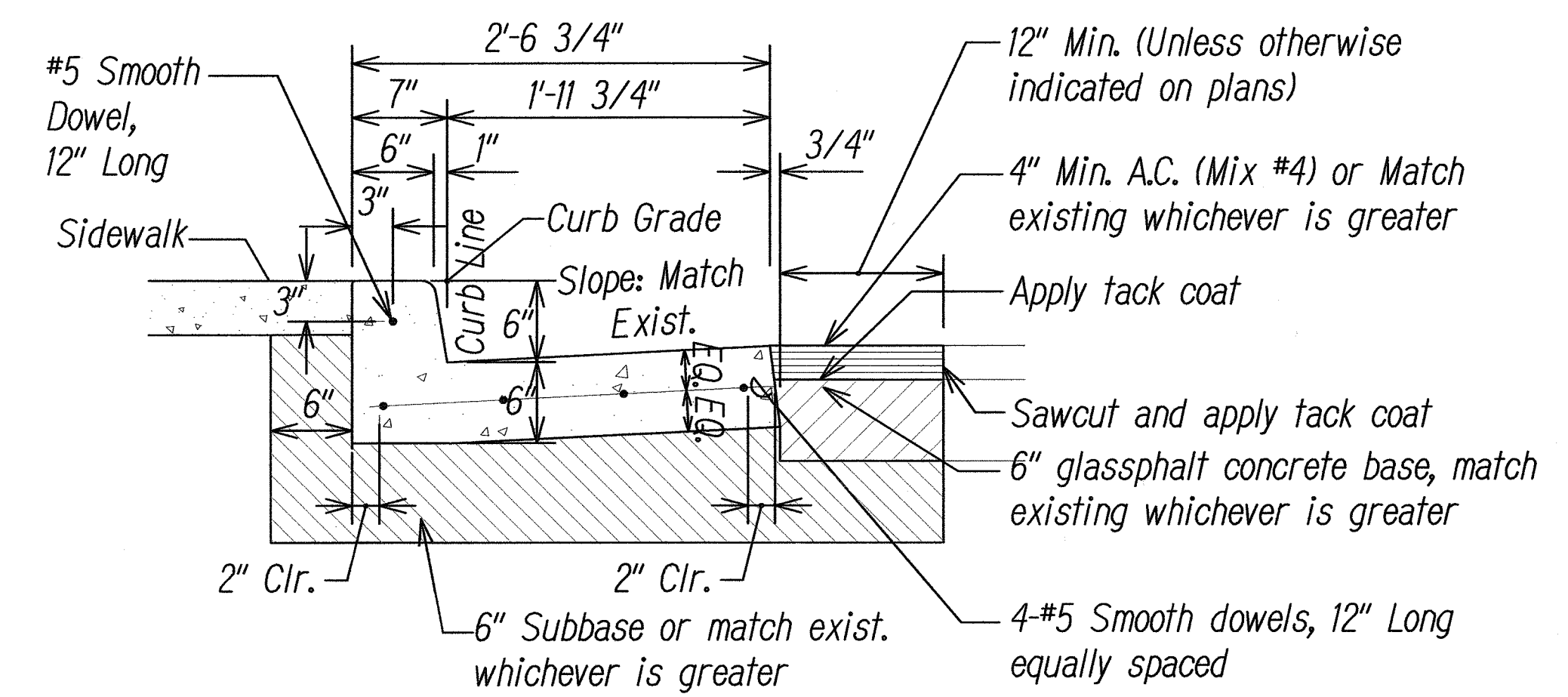
**TYPICAL BACKFILL SECTION WITH CONCRETE ENCASED DUCTS UNDER SIDEWALK AREAS**  
NOT TO SCALE



**CONCRETE CONNECTION DETAIL**  
NOT TO SCALE



**SECTION B-B CURB CONNECTION DETAIL**



**SECTION A-A CURB AND GUTTER CONNECTION DETAIL**

**TYPICAL PAVEMENT RESTORATION DETAILS**  
NOT TO SCALE



9/14/11	REV. UPPER RT. CORNER BLOCK; ADDED SHT. NUMBER
DATE	REVISION

STATE OF HAWAII  
DEPARTMENT OF TRANSPORTATION  
HIGHWAYS DIVISION

**MISCELLANEOUS DETAILS**

LILIHA STREET  
TRAFFIC SIGNAL AT KUKUI STREET  
FEDERAL AID PROJECT NO. HSIP-7413(2)

Scale: As Noted      Date: July 2011

SURVEY PLOTTED BY	DATE
DESIGNED BY	
TRACED BY	
NOTE BOOK	
QUANTITIES BY	
CHECKED BY	
No.	