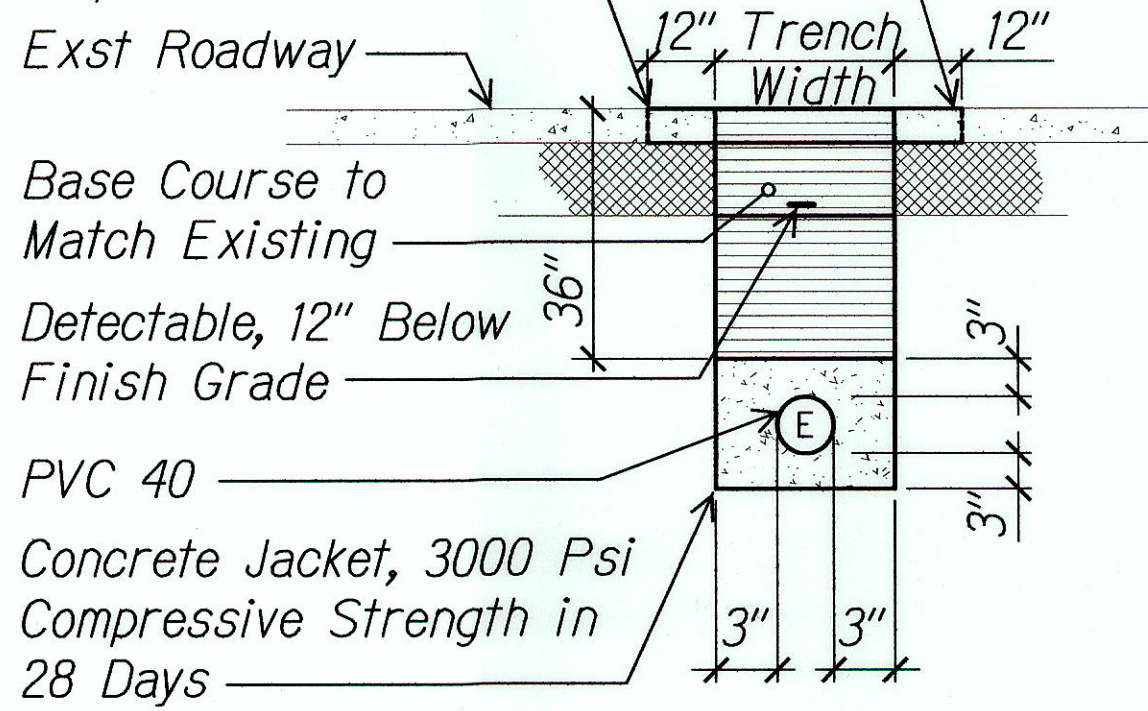


FED. ROAD DIST. NO.	STATE	FED. AID PROJ. NO.	FISCAL YEAR	SHEET NO.	TOTAL SHEETS
HAWAII	HAW.	HSIP-7413(2)	2011	ADD.28	29

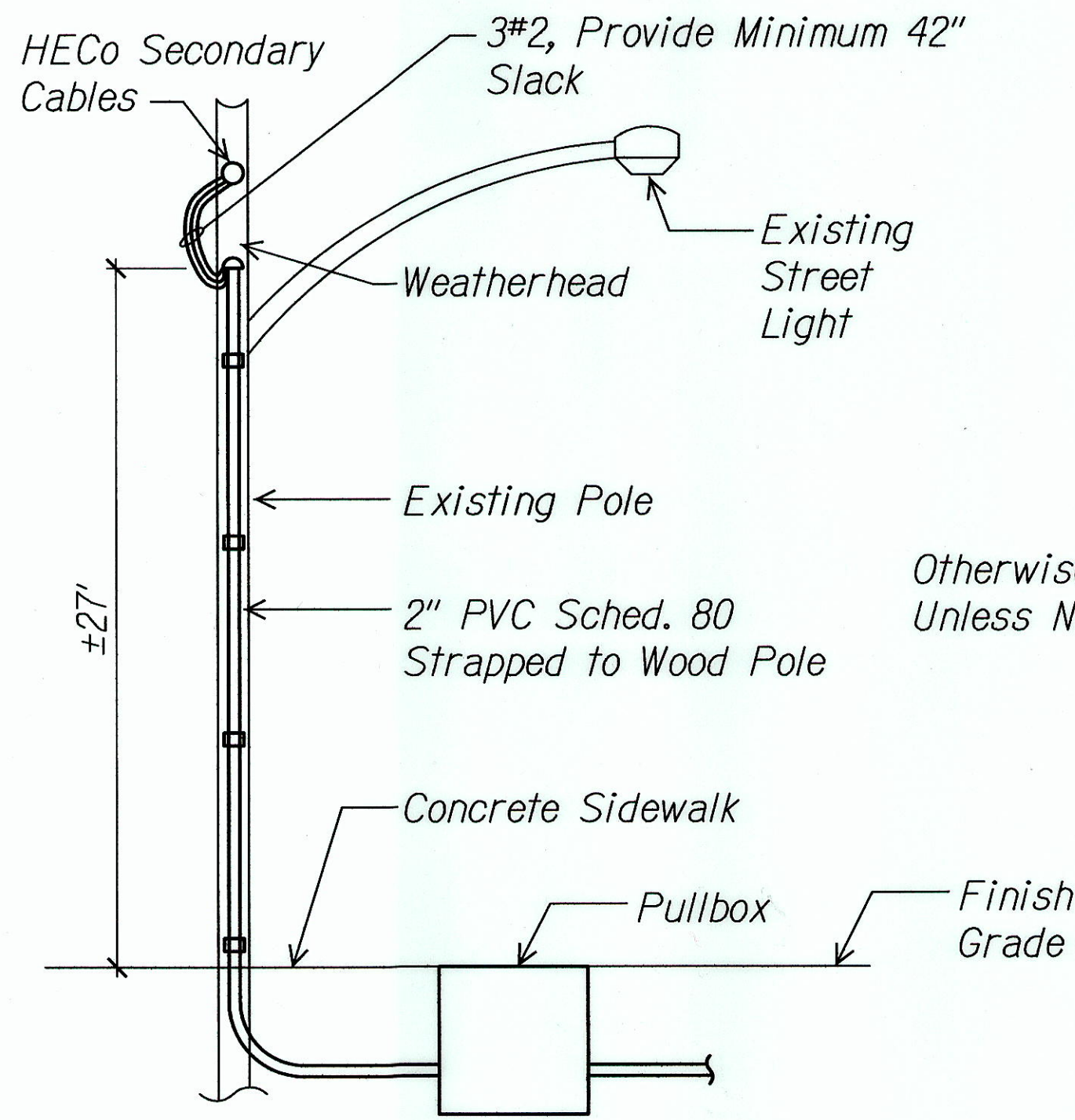
# SYMBOLS

- EP° Exist HECo Pole  
○ Exist St Lt Luminaire Mounted on Wood Pole  
□ Pullbox  
--- Underground Ductline  
(A) Denotes Duct Section (A)  
—e— Existing Overhead Lines

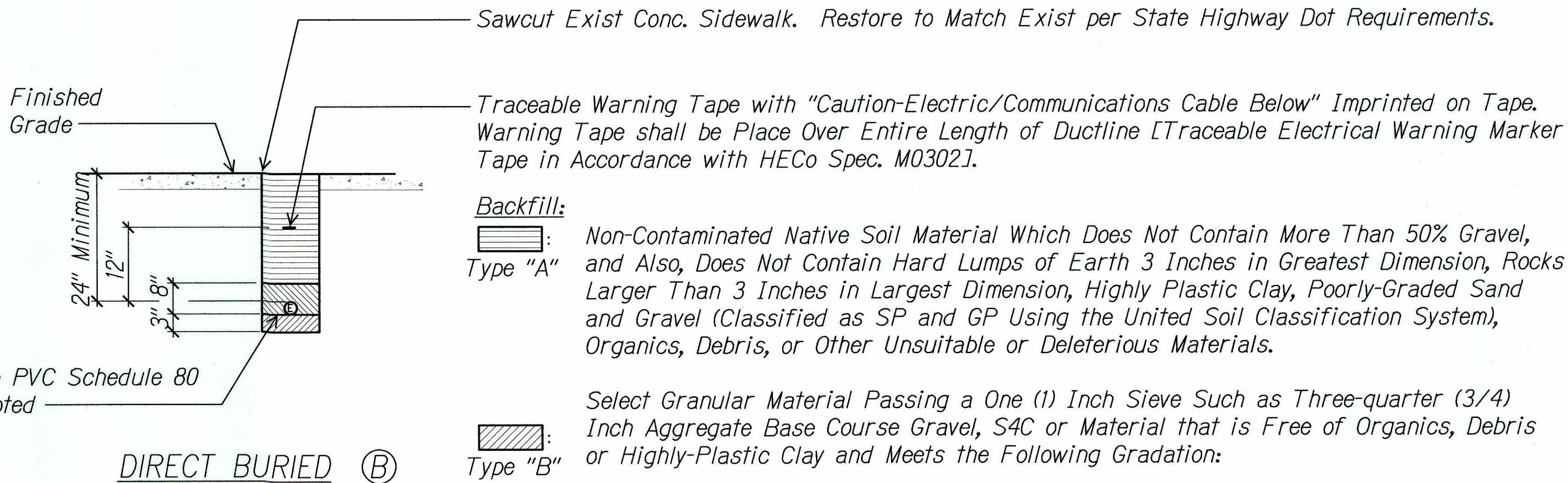
Saw Cut Exst Pavement Refer to State Highway Standard Plan TE-36 for Installation Requirements



## CONCRETE BURIED (A)



## CONDUIT RISER DETAIL



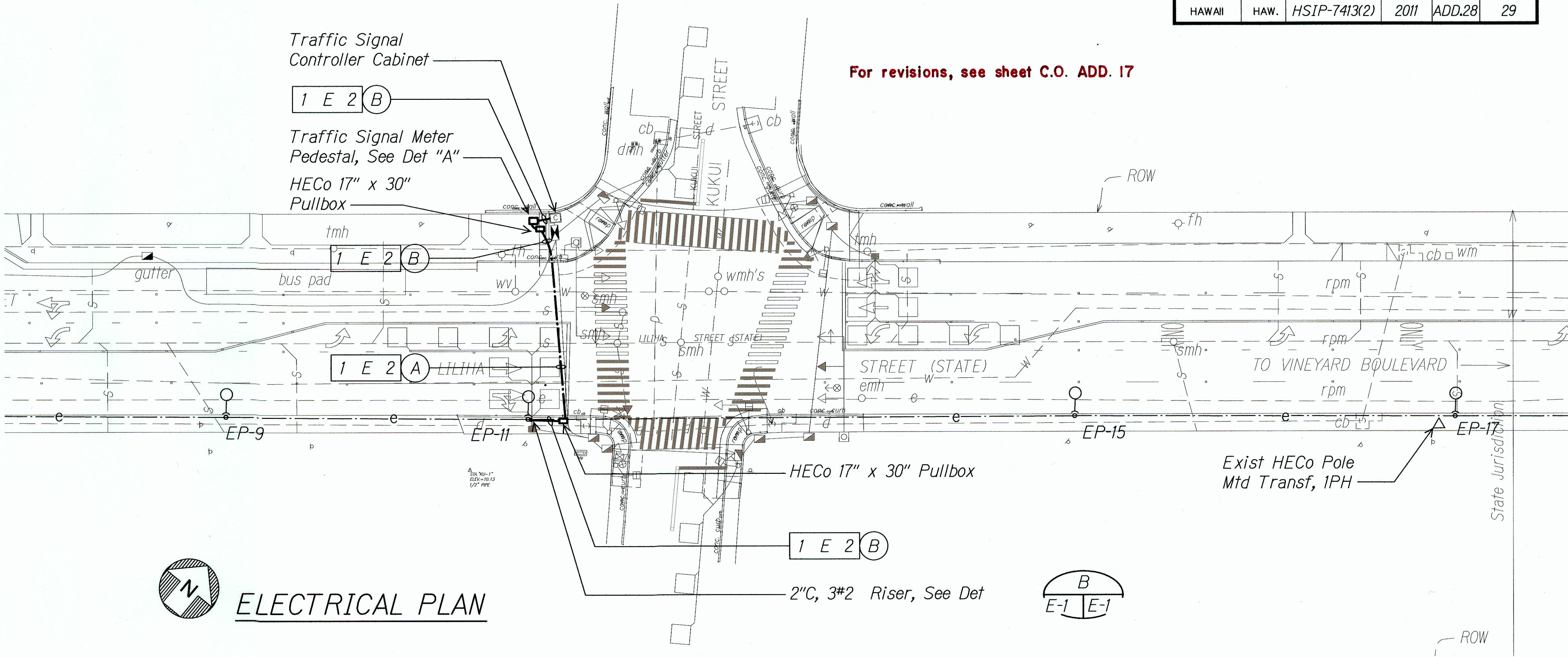
## DIRECT BURIED (B)

Sleeve Size	Percent Passing By Weight
1"	100
3/4"	90 - 100
No. 4	35 - 100
No. 40	10 - 30
No. 200	3 - 15

## TYPICAL DUCT SECTIONS

MAYOR WRIGHT'S HOUSING

For revisions, see sheet C.O. ADD. 17



## ELECTRICAL PLAN

### Notes:

- Where Trench Encounters Existing Concrete or Asphalt Concrete, Surface shall be Sawcut. Backfill, Compact and Patch Surface to Match Adjacent Area. See Trench Restoration Detail.
- Provide 3" Separation Between Elec. Ducts, 3" Separation Between Telephone & Catv Ducts & 12" Separation Between Electrical & Tel/Catv Ducts.

09/15/11 REVISED UPPER RIGHT CORNER BLOCK  
DATE REVISION

STATE OF HAWAII  
DEPARTMENT OF TRANSPORTATION  
HIGHWAYS DIVISION

## ELECTRICAL PLAN

LILIHA STREET  
TRAFFIC SIGNAL AT KUKUL STREET  
FEDERAL AID PROJECT NO. HSIP-7413(2)

Scale: 1" = 20'-0" Date: Jul 2011

E-1 SHEET No. 1 OF 2 SHEETS

"AS-BUILT"

ADD. 28