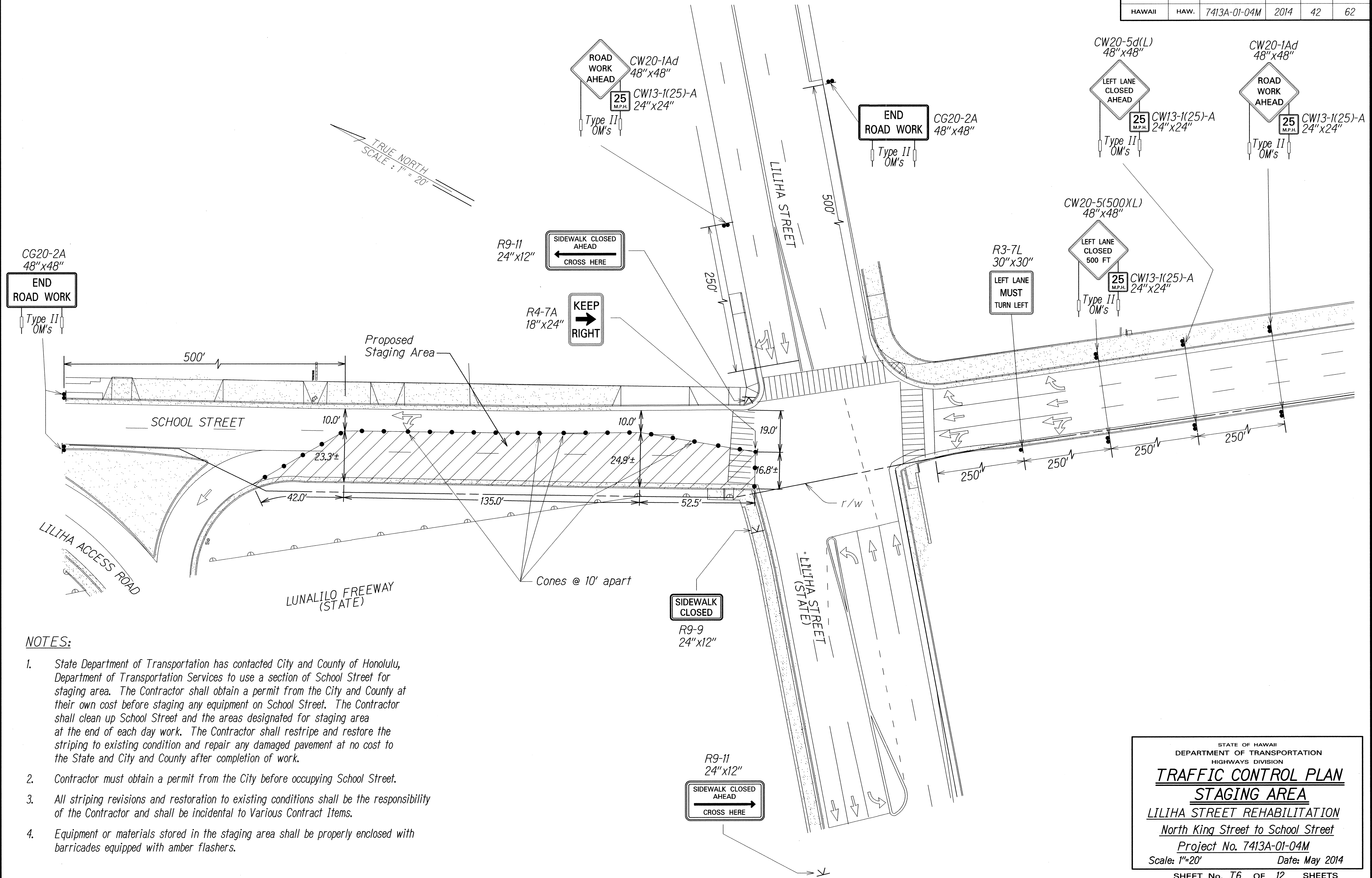


FED. ROAD DIST. NO.	STATE	PROJ. NO.	FISCAL YEAR	SHEET NO.	TOTAL SHEETS
HAWAII	HAW.	7413A-01-04M	2014	42	62



NOTES:

1. State Department of Transportation has contacted City and County of Honolulu, Department of Transportation Services to use a section of School Street for staging area. The Contractor shall obtain a permit from the City and County at their own cost before staging any equipment on School Street. The Contractor shall clean up School Street and the areas designated for staging area at the end of each day work. The Contractor shall restripe and restore the striping to existing condition and repair any damaged pavement at no cost to the State and City and County after completion of work.
2. Contractor must obtain a permit from the City before occupying School Street.
3. All striping revisions and restoration to existing conditions shall be the responsibility of the Contractor and shall be incidental to Various Contract Items.
4. Equipment or materials stored in the staging area shall be properly enclosed with barricades equipped with amber flashers.

DESIGNED BY	DATE
TRACED BY	
DESIGNED BY	
QUANTITIES BY	
CHECKED BY	
DATE	

STATE OF HAWAII
DEPARTMENT OF TRANSPORTATION
HIGHWAYS DIVISION

TRAFFIC CONTROL PLAN
STAGING AREA
LILIHA STREET REHABILITATION
North King Street to School Street
Project No. 7413A-01-04M
Scale: 1"=20' Date: May 2014

SHEET No. T6 OF 12 SHEETS