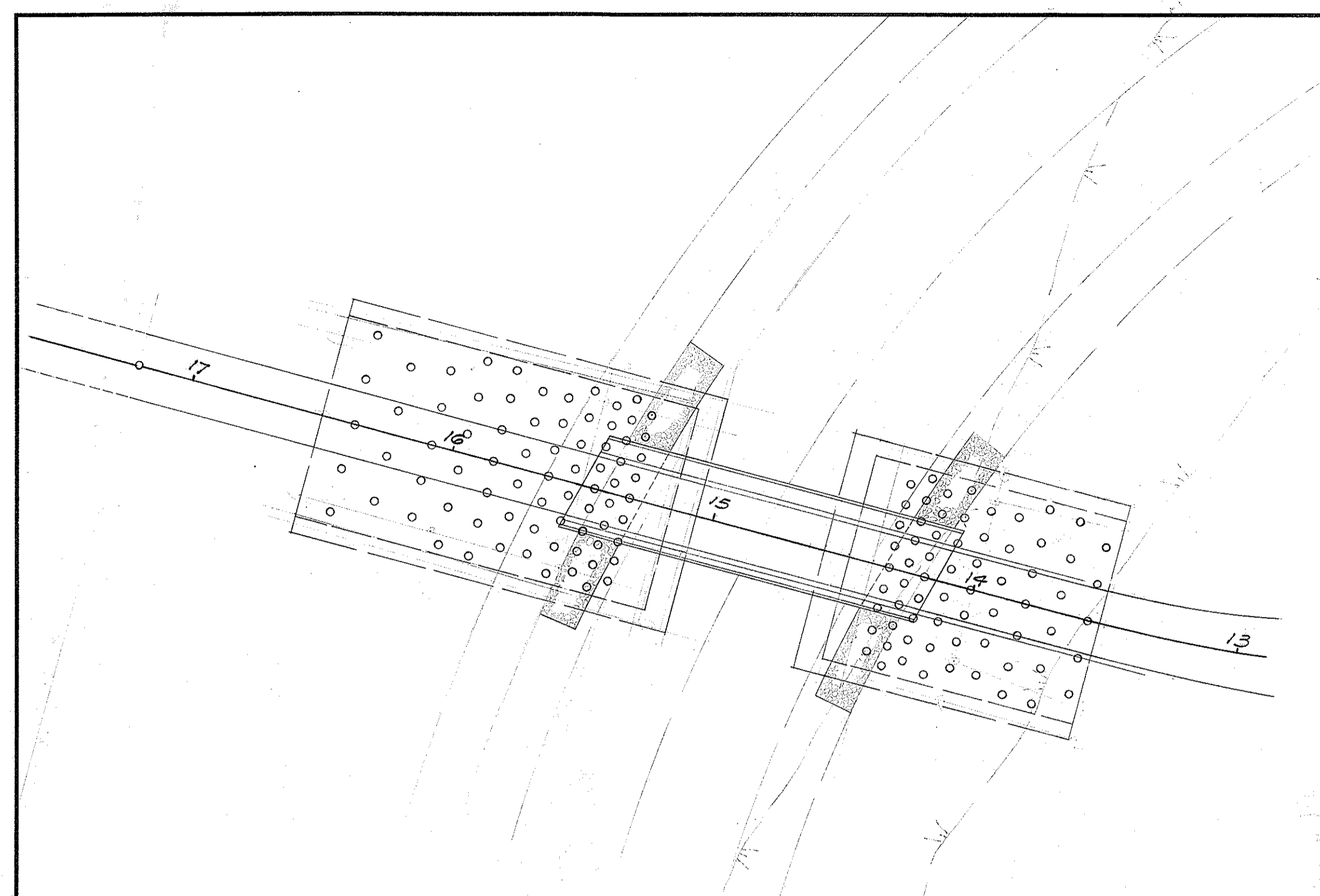
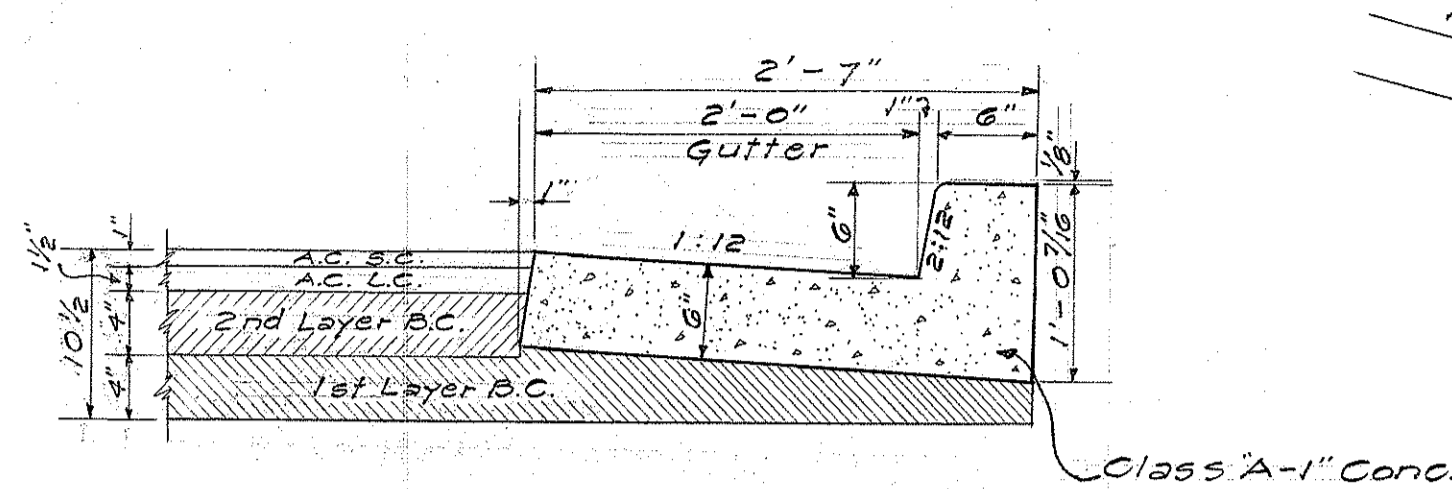


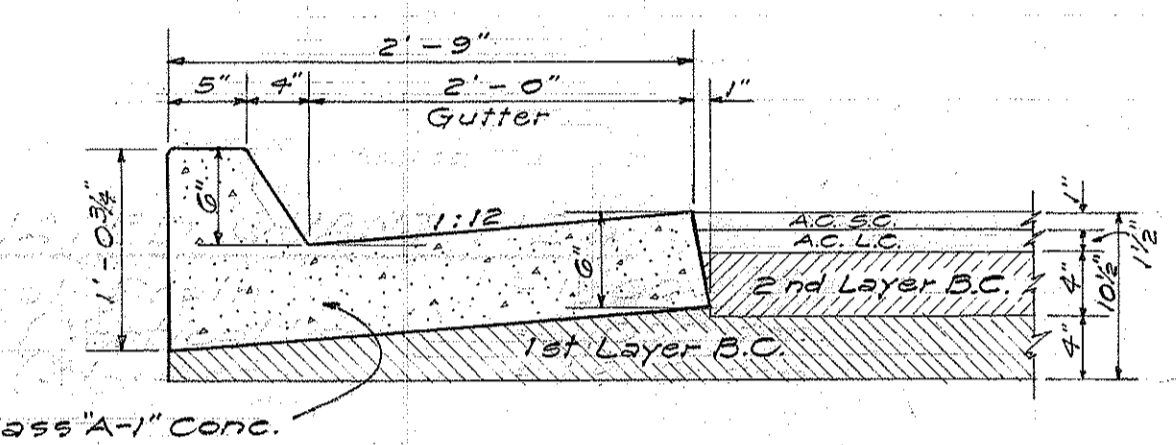
FED. ROAD DIST. NO.	STATE	FED. AID PROJ. NO.	FISCAL YEAR	SHEET NO.	TOTAL SHEETS
HAWAII	HAW.	5-212(B)	1960	5	15



LAYOUT OF SAND DRAINS
Scale: 1"=40 Ft.



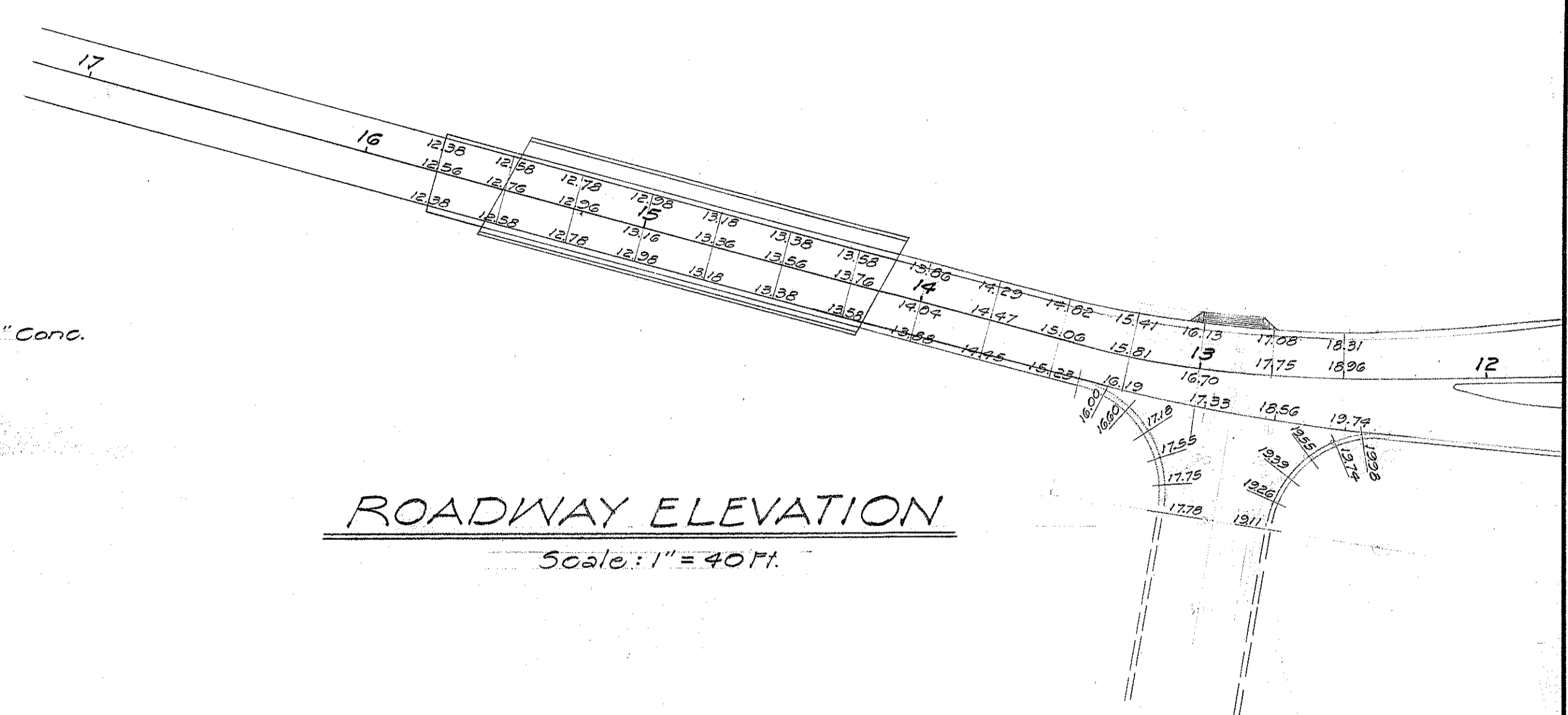
TYPE "DG" CURB & GUTTER
Scale: 1"=1'-0"



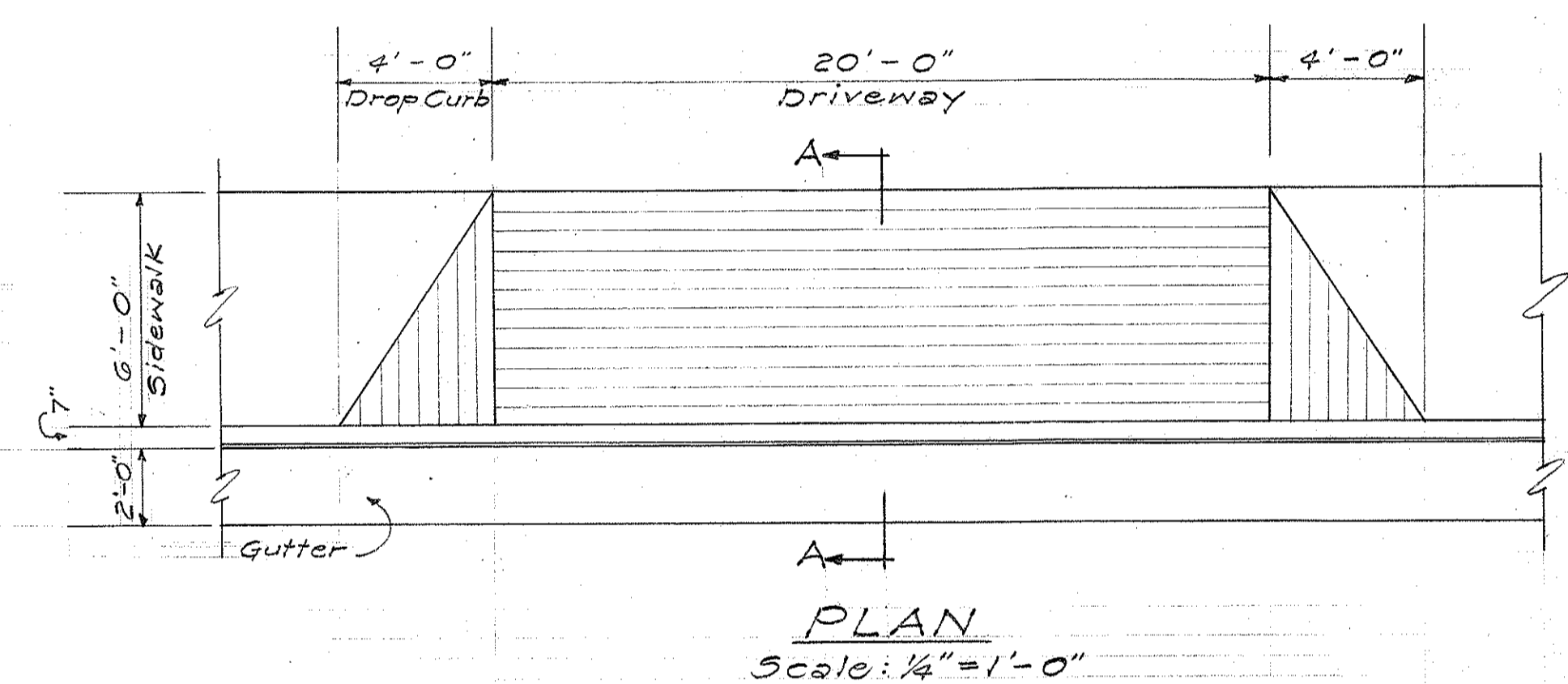
TYPE "AG" CURB & GUTTER
Scale: 1"=1'-0"

NOTE:
Type "A.G." & "D.G." Curb & Gutter to be poured monolithically.

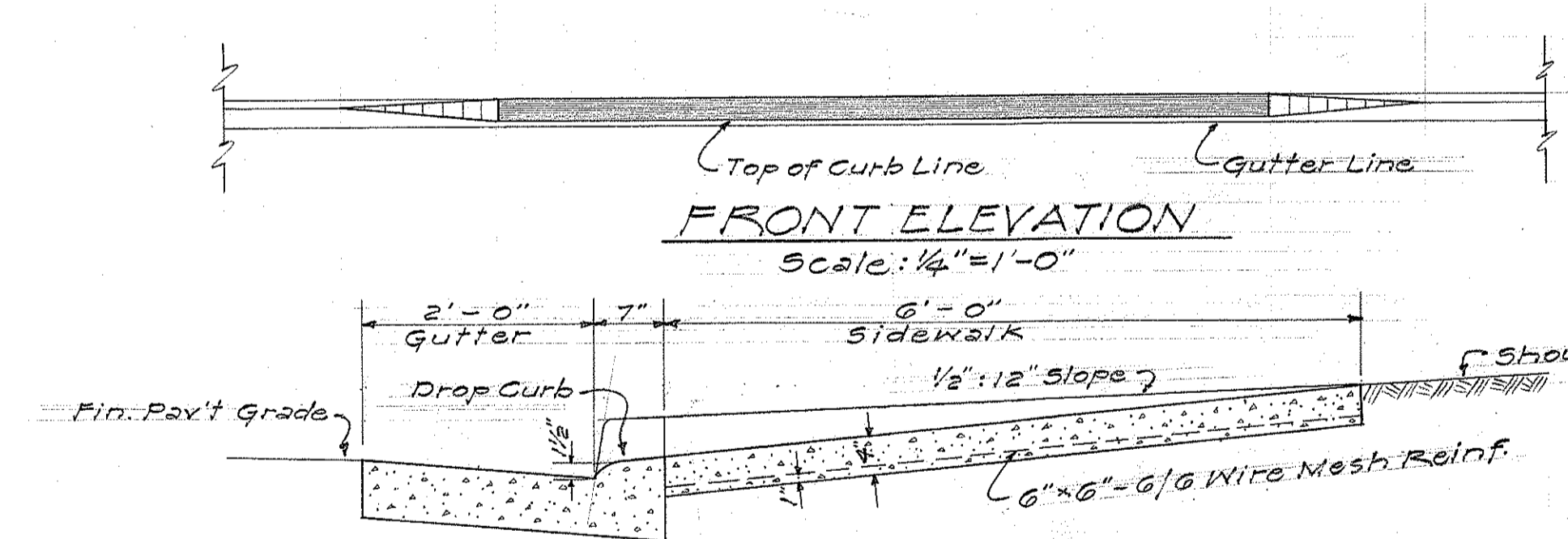
ESTIMATED QUANTITIES
Vertical Drain = 12,000 l.f.
Sand (Vertical Drain) = 1,090 ton
Sand (Blanket) = 1,910 ton



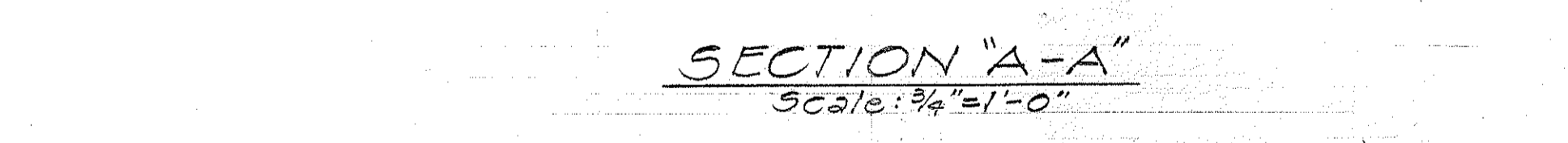
ROADWAY ELEVATION
Scale: 1"=40 Ft.



PLAN
Scale: 1/4"=1'-0"

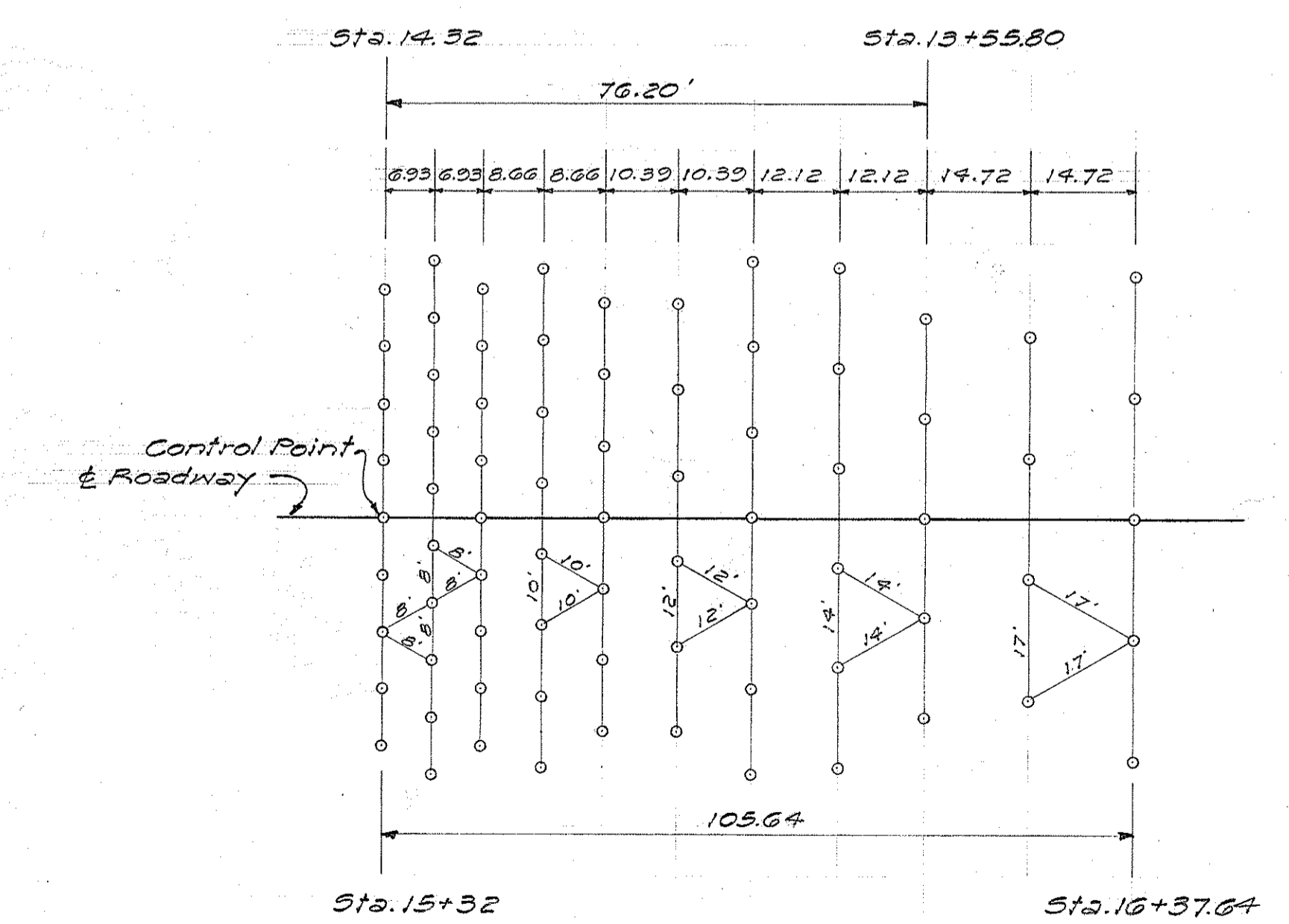


FRONT ELEVATION
Scale: 1/4"=1'-0"

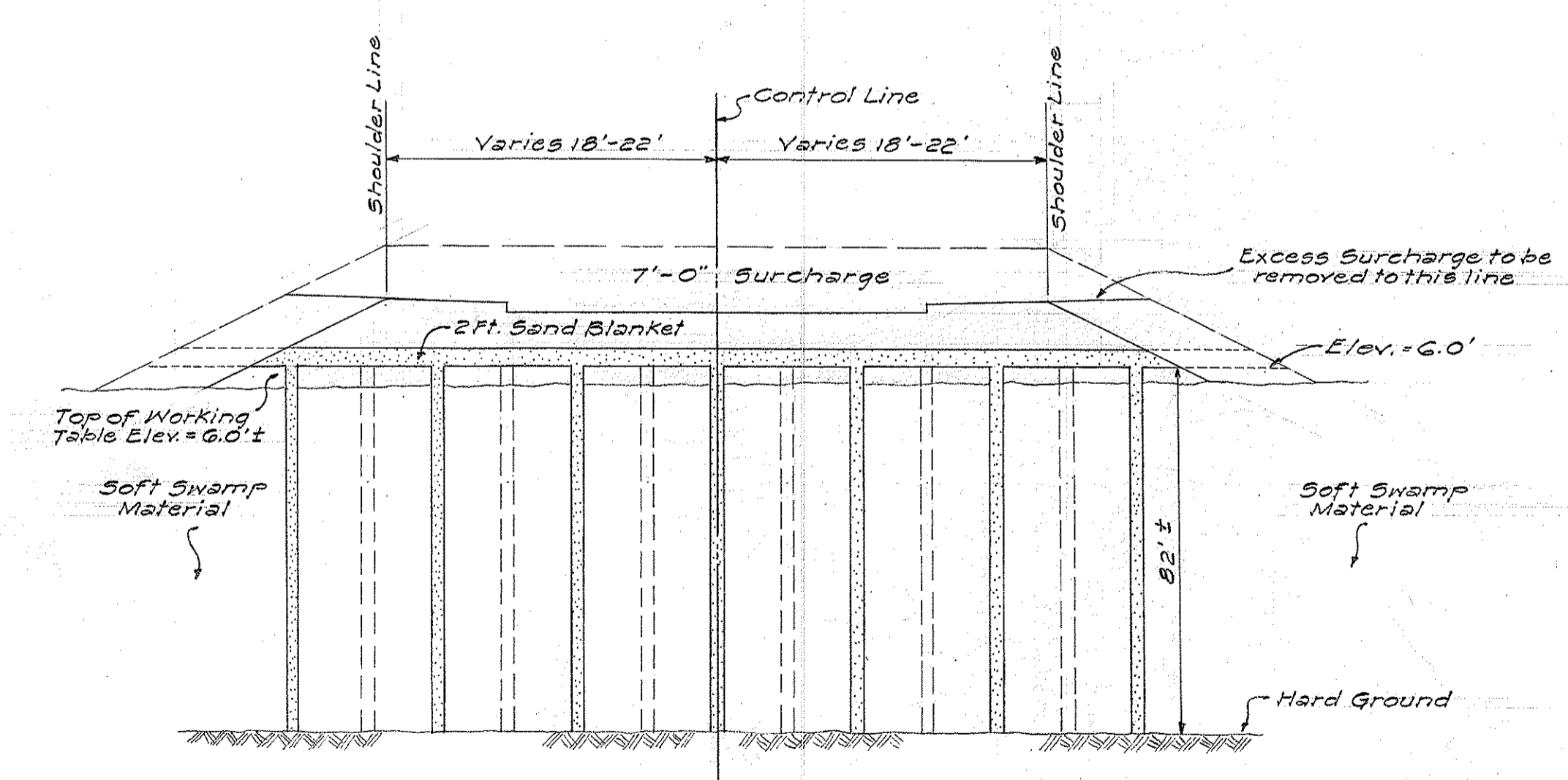


SECTION "A-A"
Scale: 3/4"=1'-0"

DETAIL OF REINFORCED CONC. DRIVEWAY



TYPICAL LAYOUT OF SAND DRAINS
Scale: 1"=20 Ft.



TYPICAL TRANSVERSE SECTION
Not to Scale

DEPARTMENT OF TRANSPORTATION
DIVISION OF HIGHWAYS
STATE OF HAWAII
**DETAILS OF SAND DRAINS,
REINF. CONC. DRIVEWAY,
AND ROADWAY ELEVATION
MOANALUA ROAD
PROJ. NO. S-212(B)
Scale: AS SHOWN**

DATE _____
SURVEY PLOTTED BY _____
DRAWN BY _____
TRACED BY _____
QUANTITIES CHECKED BY _____
NOTE BOOK No. _____
CHECKED BY _____