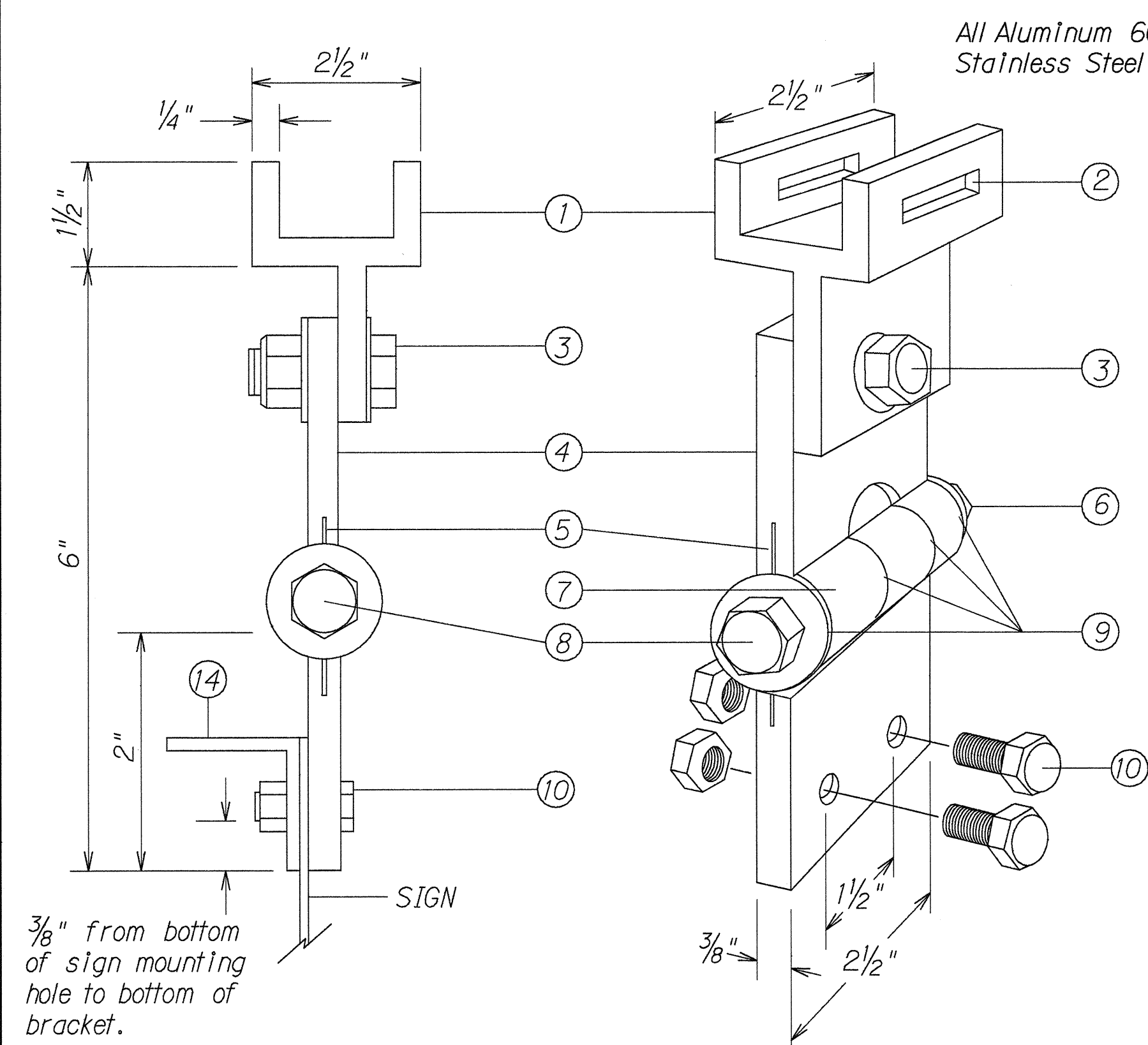


FED. ROAD DIST. NO.	STATE	FED. AID PROJ. NO.	FISCAL YEAR	SHEET NO.	TOTAL SHEETS
HAWAII	HAW.	STP-724(1)	1995	40	42

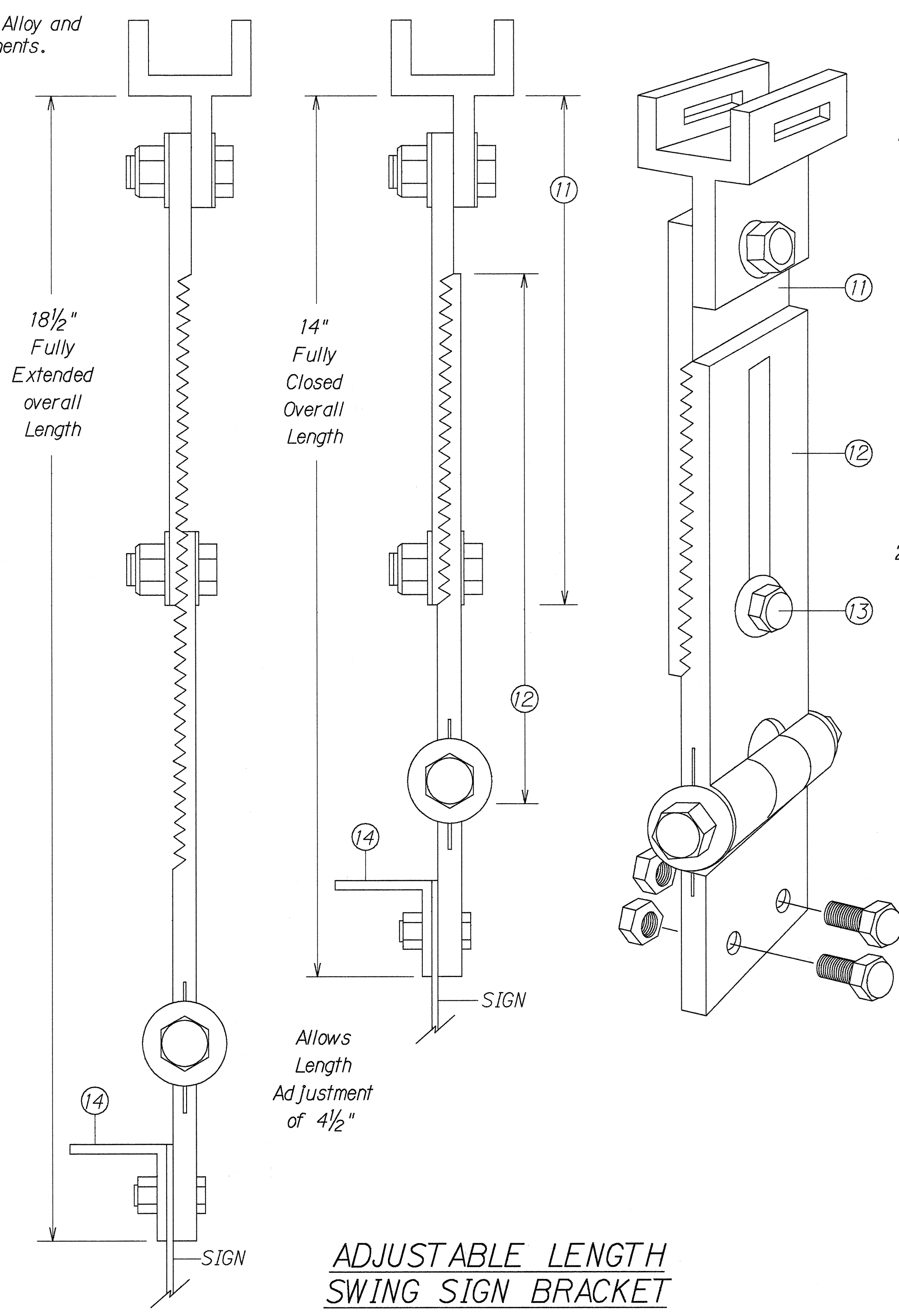


**FIXED LENGTH NON-ADJUSTABLE SWING SIGN BRACKET**

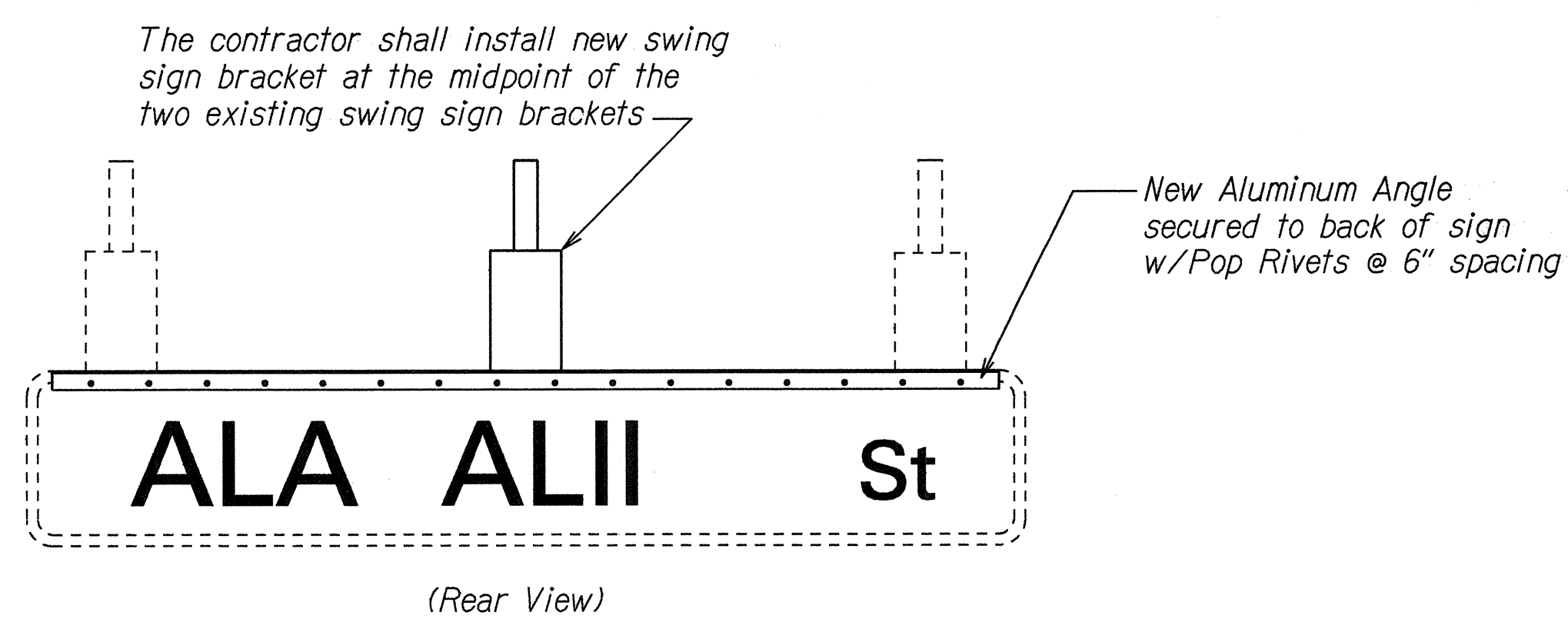
- ① Pivotal Upper Bracket
- ② 1 5/8" x 1/4" Slot for double strapping to electrolier mast arm. (M2G-34S(HD) .030" x 3/4" Heavy Duty Stainless Steel Strap with M2G-34B(HD) Buckle recommended.)
- ③ 1/2" - 13 x 1 1/2" Stainless Steel Hex Head Bolt with Stainless Steel Hex Lock Nut and 1/16" Stainless Steel Washer (both sides). Allows upper bracket to pivot and align with electrolier mast arm.
- ④ 6" Overall drop with Fixed Length Sign Bracket
- ⑤ Stainless Steel Dampener Spring (Removable)
- ⑥ Stainless Steel Hex Lock Nut with 1/16" Stainless Steel Washer
- ⑦ 1" O.D. Axle Housing
- ⑧ 1/2" - 13 x 4" Stainless Steel Hex Head Bolt with 1/16" Stainless Steel Washer
- ⑨ Ollite Bushing
- ⑩ Sign Mounting Sets, consisting of two each 5/16" - 18 x 1" Stainless Steel Hex Head Bolt with Stainless Steel Hex Lock Nut. Two holes on 1 1/2" centers provide positive lock sign mounting to bracket.
- ⑪ 8 1/4" overall length Upper Adjustable Sign Bracket section
- ⑫ 9" overall length Lower Adjustable Sign Bracket section, including Axle Housing (8" overall length to top of Axle Housing)
- ⑬ 1/2" - 13 x 1 1/2" Stainless Steel Hex Bolt with Stainless Steel Hex Lock Nut and 1/16" Stainless Steel Washers (both sides). Loosen lock nut, adjust bracket teeth to level sign.
- ⑭ 1/4" x 1 1/4" x 1/8" Aluminum Angle

Note: Dimensions may vary slightly.

All Aluminum 6061T6 Alloy and Stainless Steel Components.



**ADJUSTABLE LENGTH SWING SIGN BRACKET**



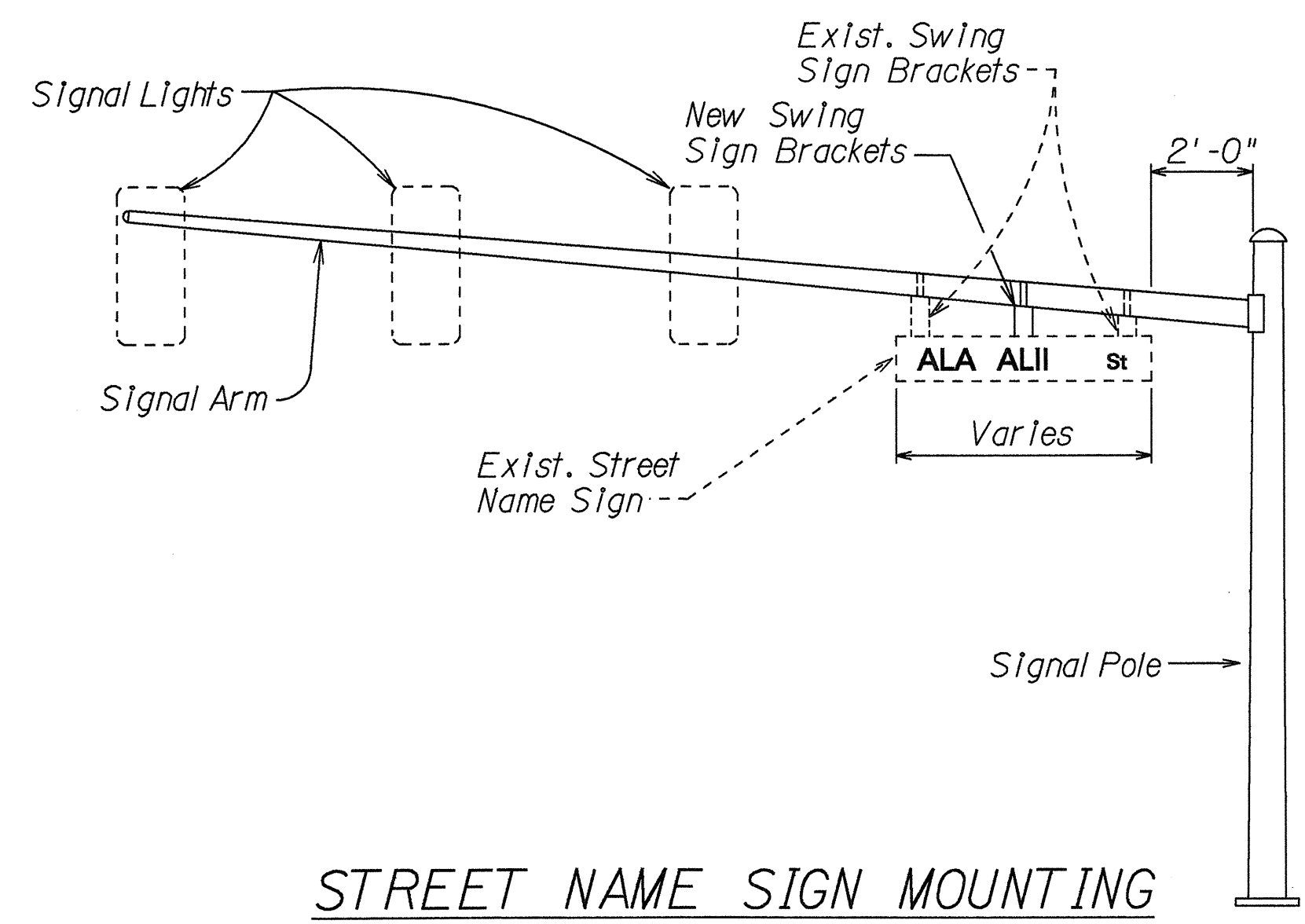
**TYPICAL SWING BRACKET LAYOUT**

**NOTES:**

- The Contractor shall install an additional Swing Sign Bracket with Aluminum Angle on the following existing Street Name Signs. Each sign shall have three (3) Swing Sign Brackets (2 existing, 1 new) and an Aluminum Angle.

Street Name	No. of Signs	No. of New Brackets w/Aluminum Angle
ALA ALII Ave	1	1
MANANAI PI	1	1
KAHUAPAANI St	2	2
<b>TOTAL</b>	<b>4</b>	<b>4</b>

  - The accepted quantities of the additional Swing Sign Bracket with Aluminum Angle will be paid for at the contract unit price per each, complete in place. The contract unit price shall be full compensation for all necessary hardware, equipment, tools, labor, materials and other incidentals for the installation of the additional Swing Sign Bracket w/Aluminum Angle.
  - Payment shall be made under Item No. 621.0220 - Additional Swing Sign Bracket with Aluminum Angle.
- Signs D3-1, D3-2 & D3-3 shall be new Street Name Signs. For Details, see Sht. No. T11. The Contractor shall provide the same message on the front and back side of the sign. Payment will not be made separately but shall be considered as one unit.
  - Colors:  
Legend - White (Reflectorized)  
Background - Green (Reflectorized)
  - All panels shall be reflectorized with Type B reflective sheeting in accordance with Section 712.20 of the Standard Specifications.
  - Borders and messages shall conform to details as shown on the plans and as specified in the MUTCD.
  - Sign mounting brackets, fixtures, fasteners, and all necessary hardware, and equipment, tools, labor, materials and other incidentals for installation, will not be paid for separately but shall be considered incidental to street name sign installation.
  - Payment shall be made under Item No. 621.0215 - Street Name Sign on Traffic Signal Mast Arm.



**STREET NAME SIGN MOUNTING ON MAST ARM**

ORIGINAL PLAN	DATE	5/12/95
DRAWN BY	DESIGNED BY	C. Abo
NOTED BY	CHECKED BY	N. Kahims

STATE OF HAWAII  
DEPARTMENT OF TRANSPORTATION  
HIGHWAYS DIVISION

**SWING SIGN BRACKET DETAIL**  
  
**KAHUAPAANI ST. RESURFACING**  
**Ulune St. to Salt Lake Blvd.**  
**Fed. Aid Project No. STP-724(1)**  
Not to Scale Date: June, 1995