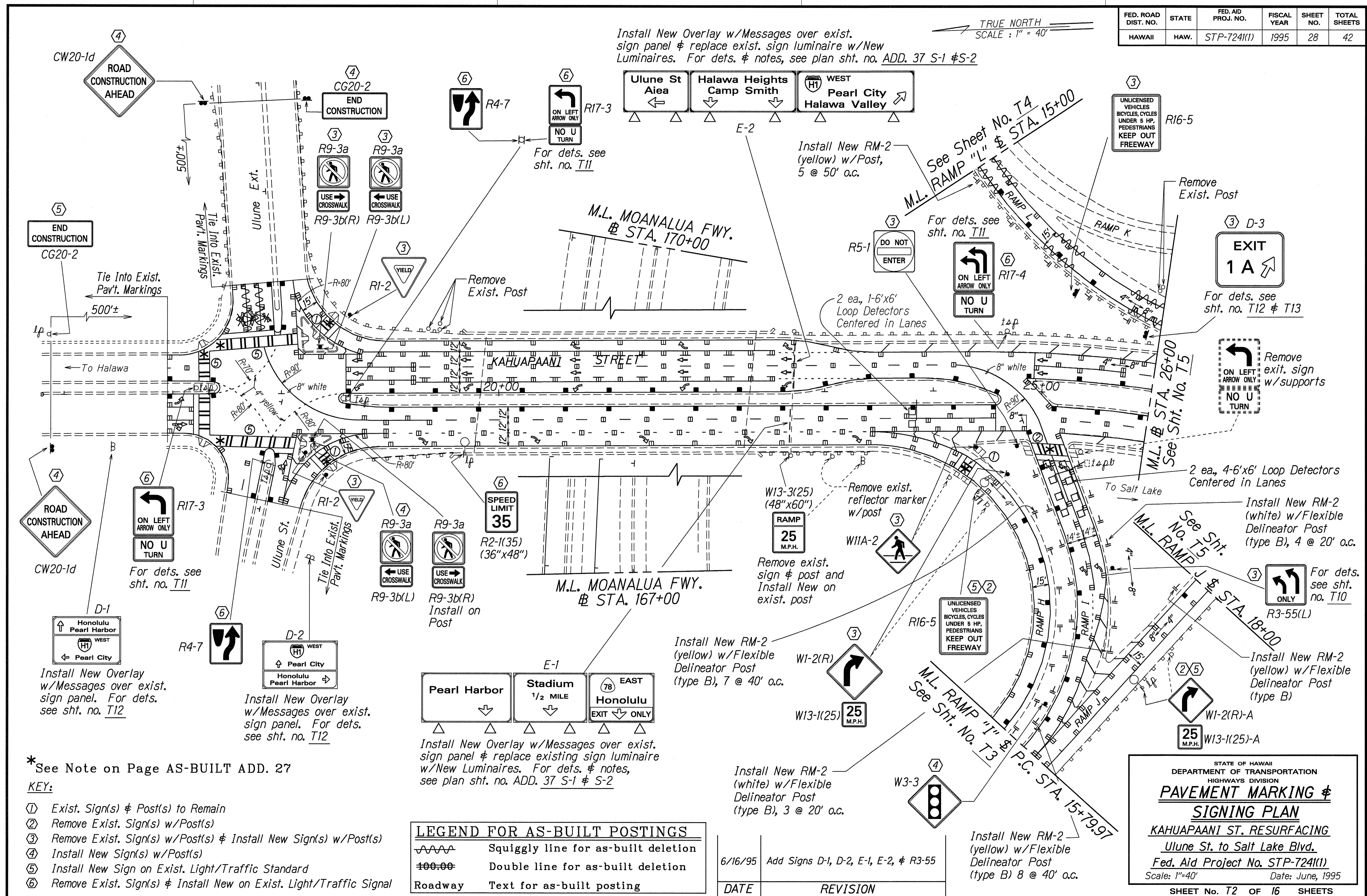


FED. ROAD DIST. NO.	STATE	FED. AID PROJ. NO.	FISCAL YEAR	SHEET NO.	TOTAL SHEETS
HAWAII	HAW.	STP-724(1)	1995	28	42

TRUE NORTH  
SCALE: 1" = 40'

Install New Overlay w/Messages over exist. sign panel & replace exist. sign luminaire w/New Luminaires. For det's. & notes, see plan sht. no. ADD. 37 S-1 & S-2



\*See Note on Page AS-BUILT ADD. 27

- KEY:**
- ① Exist. Sign(s) & Post(s) to Remain
  - ② Remove Exist. Sign(s) w/Post(s)
  - ③ Remove Exist. Sign(s) w/Post(s) & Install New Sign(s) w/Post(s)
  - ④ Install New Sign(s) w/Post(s)
  - ⑤ Install New Sign on Exist. Light/Traffic Standard
  - ⑥ Remove Exist. Sign(s) & Install New on Exist. Light/Traffic Signal

**LEGEND FOR AS-BUILT POSTINGS**

	Squiggly line for as-built deletion
	Double line for as-built deletion
Roadway	Text for as-built posting

6/16/95	Add Signs D-1, D-2, E-1, E-2, & R3-55
DATE	REVISION

SURVEY PLOTTED BY	DATE	5/28/95
DRAWN BY		
NOTE BOOK DESIGNED BY		
QUANTITIES BY		
CHECKED BY		

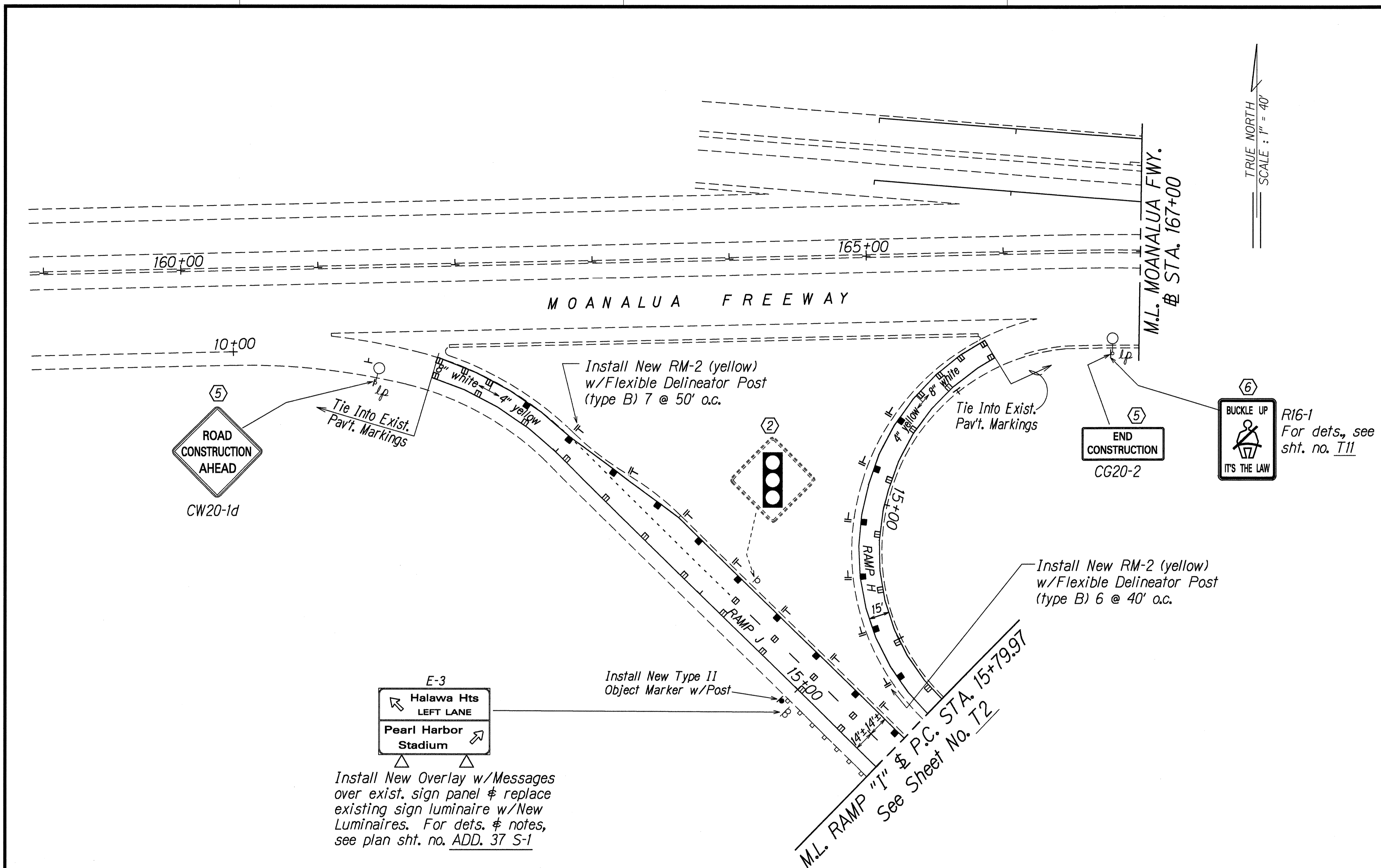
STATE OF HAWAII  
DEPARTMENT OF TRANSPORTATION  
HIGHWAYS DIVISION

**PAVEMENT MARKING & SIGNING PLAN**

**KAHUAPAANI ST. RESURFACING**  
Ulune St. to Salt Lake Blvd.  
Fed. Aid Project No. STP-724(1)  
Scale: 1"=40' Date: June, 1995

SHEET No. T2 OF 16 SHEETS

FED. ROAD DIST. NO.	STATE	FED. AID PROJ. NO.	FISCAL YEAR	SHEET NO.	TOTAL SHEETS
HAWAII	HAW.	STP-724(1)	1995	29	42

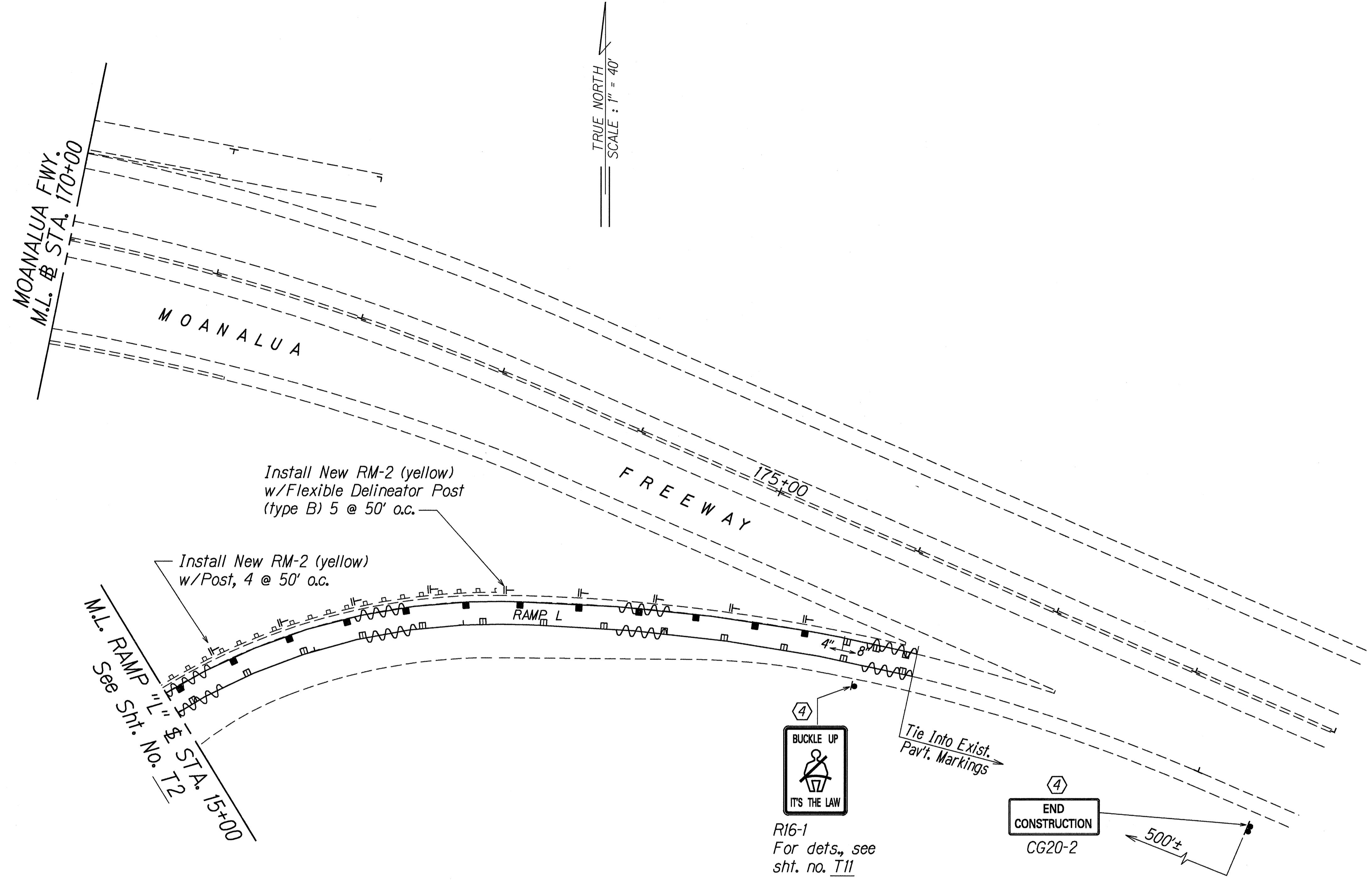


DESIGNED BY	DATE
DRAWN BY	5/23/95
CHECKED BY	
IN CHARGE	
NOTED BY	
QUANTITIES BY	
DATE	

- KEY:**
- ① Exist. Sign(s) # Post(s) to Remain
  - ② Remove Exist. Sign(s) w/Post(s)
  - ③ Remove Exist. Sign(s) w/Post(s) # Install New Sign(s) w/Post(s)
  - ④ Install New Sign(s) w/Post(s)
  - ⑤ Install New Sign on Exist. Light/Traffic Standard
  - ⑥ Remove Exist. Sign(s) # Install New on Exist. Light/Traffic Signal

6/16/95	Add Sign E-3
DATE	REVISION
STATE OF HAWAII DEPARTMENT OF TRANSPORTATION HIGHWAYS DIVISION <b>PAVEMENT MARKING #</b> <b>SIGNING PLAN</b> KAHUAPAANI ST. RESURFACING Ulune St. to Salt Lake Blvd. Fed. Aid Project No. STP-724(1) Scale: 1"=40' Date: April, 1995	
SHEET No. T3 OF 16 SHEETS	

FED. ROAD DIST. NO.	STATE	FED. AID PROJ. NO.	FISCAL YEAR	SHEET NO.	TOTAL SHEETS
HAWAII	HAW.	STP-7241(1)	1995	30	42



TRUE NORTH  
SCALE: 1" = 40'

SURVEY PLATTED BY	DATE
DESIGNED BY	
DESIGNED BY	
QUANTITIES BY	
CHECKED BY	
ORIGINAL PLAN	
NOTE BOOK	
NO. REVISED	
CHECKED BY	

- KEY:**
- ① Exist. Sign(s) & Post(s) to Remain
  - ② Remove Exist. Sign(s) w/Post(s)
  - ③ Remove Exist. Sign(s) w/Post(s) & Install New Sign(s) w/Post(s)
  - ④ Install New Sign(s) w/Post(s)
  - ⑤ Install New Sign on Exist. Light/Traffic Standard
  - ⑥ Remove Exist. Sign(s) & Install New on Exist. Light/Traffic Signal

LEGEND FOR AS-BUILT POSTINGS	
	Squiggly line for as-built deletion
	Double line for as-built deletion
Roadway	Text for as-built posting

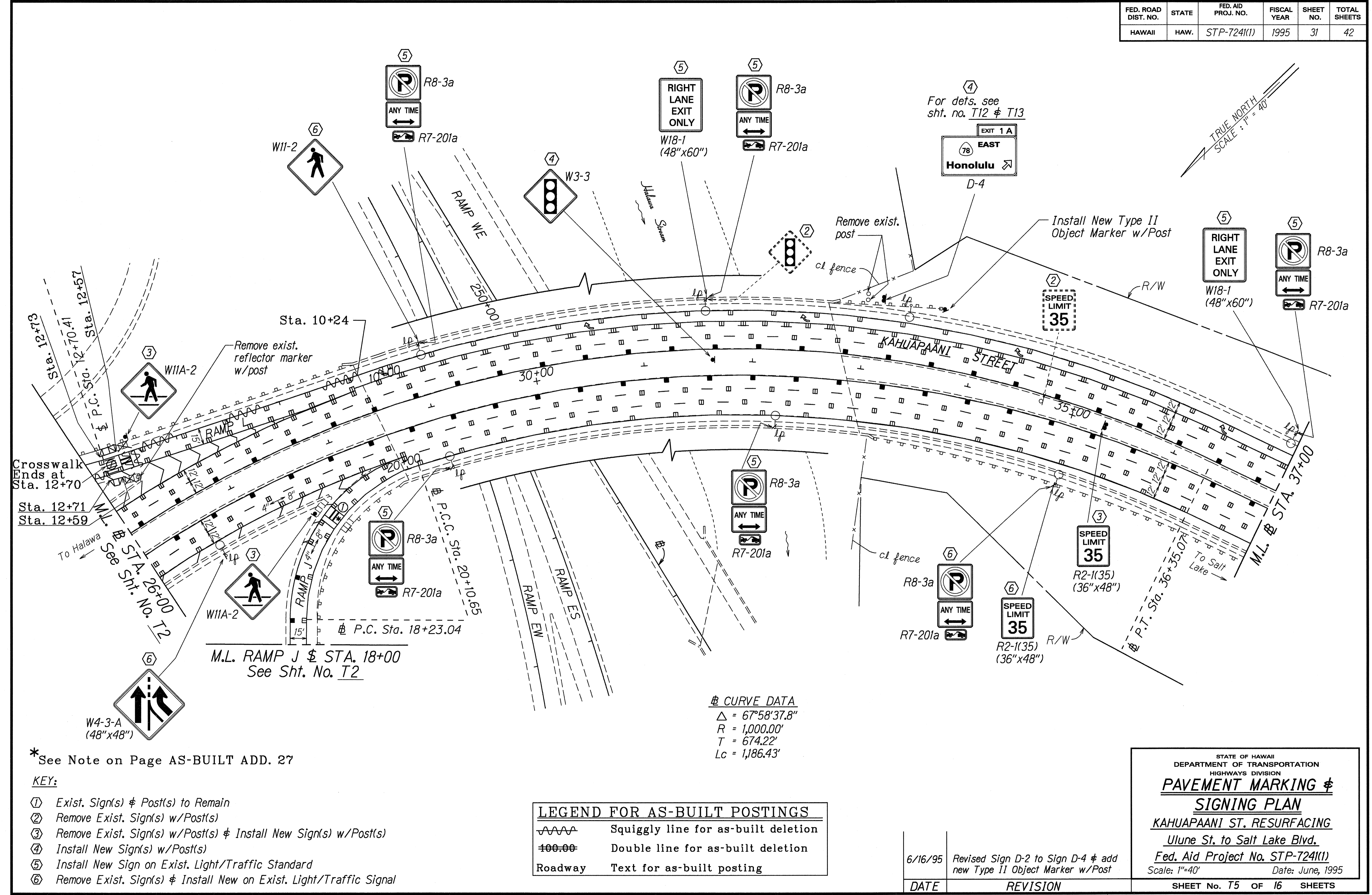
STATE OF HAWAII  
DEPARTMENT OF TRANSPORTATION  
HIGHWAYS DIVISION

**PAVEMENT MARKING &  
SIGNING PLAN**

KAHUAPAANI ST. RESURFACING  
Ulune St. to Salt Lake Blvd.  
Fed. Aid Project No. STP-7241(1)  
Scale: 1"=40' Date: June, 1995

SHEET No. T4 OF 16 SHEETS

FED. ROAD DIST. NO.	STATE	FED. AID PROJ. NO.	FISCAL YEAR	SHEET NO.	TOTAL SHEETS
HAWAII	HAW.	STP-724(1)	1995	31	42



**CURVE DATA**  
 $\Delta = 67^{\circ}58'37.8''$   
 $R = 1,000.00'$   
 $T = 674.22'$   
 $Lc = 1,186.43'$

\*See Note on Page AS-BUILT ADD. 27

**KEY:**

- ① Exist. Sign(s) & Post(s) to Remain
- ② Remove Exist. Sign(s) w/Post(s)
- ③ Remove Exist. Sign(s) w/Post(s) & Install New Sign(s) w/Post(s)
- ④ Install New Sign(s) w/Post(s)
- ⑤ Install New Sign on Exist. Light/Traffic Standard
- ⑥ Remove Exist. Sign(s) & Install New on Exist. Light/Traffic Signal

**LEGEND FOR AS-BUILT POSTINGS**

- Squiggly line for as-built deletion
- Double line for as-built deletion
- Roadway Text for as-built posting

DESIGNED BY	DATE
DRAWN BY	5/22/95
CHECKED BY	
IN CHARGE	
APPROVED BY	
NOTED BY	
QUANTITIES BY	
REVISIONS	

DATE	REVISION
6/16/95	Revised Sign D-2 to Sign D-4 & add new Type II Object Marker w/Post

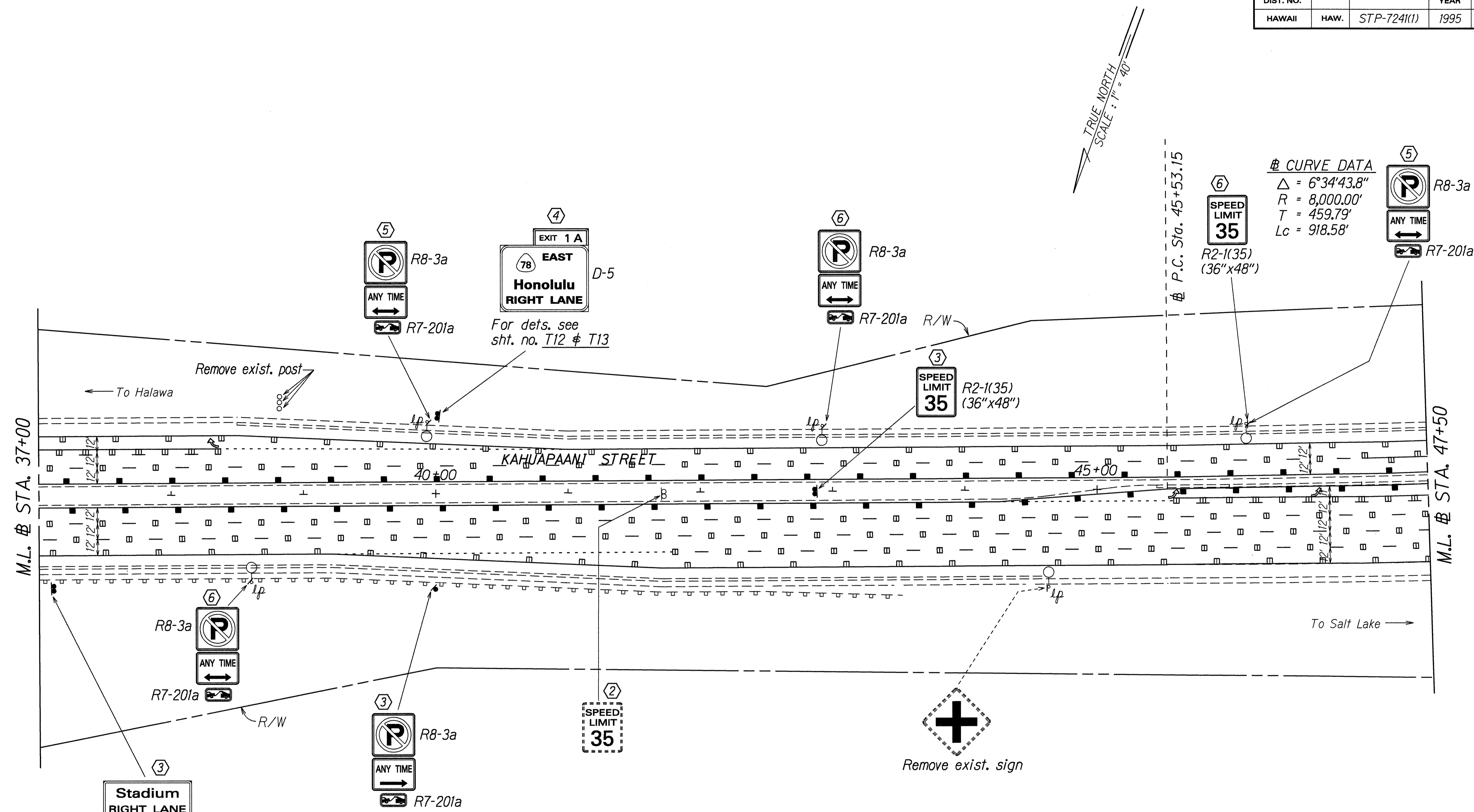
STATE OF HAWAII  
DEPARTMENT OF TRANSPORTATION  
HIGHWAYS DIVISION

**PAVEMENT MARKING & SIGNING PLAN**

KAHUAPAANI ST. RESURFACING  
Ulune St. to Salt Lake Blvd.  
Fed. Aid Project No. STP-724(1)  
Scale: 1"=40' Date: June, 1995

SHEET No. T5 OF 16 SHEETS

FED. ROAD DIST. NO.	STATE	FED. AID PROJ. NO.	FISCAL YEAR	SHEET NO.	TOTAL SHEETS
HAWAII	HAW.	STP-724(1)	1995	32	42



# CURVE DATA  
 $\Delta = 6^{\circ}34'43.8''$   
 $R = 8,000.00'$   
 $T = 459.79'$   
 $Lc = 918.58'$

SURVEY PLOTTED BY	DATE
DESIGNED BY	5/18/95
CHECKED BY	
NOTE BOOK	
QUANTITIES BY	
DATE	

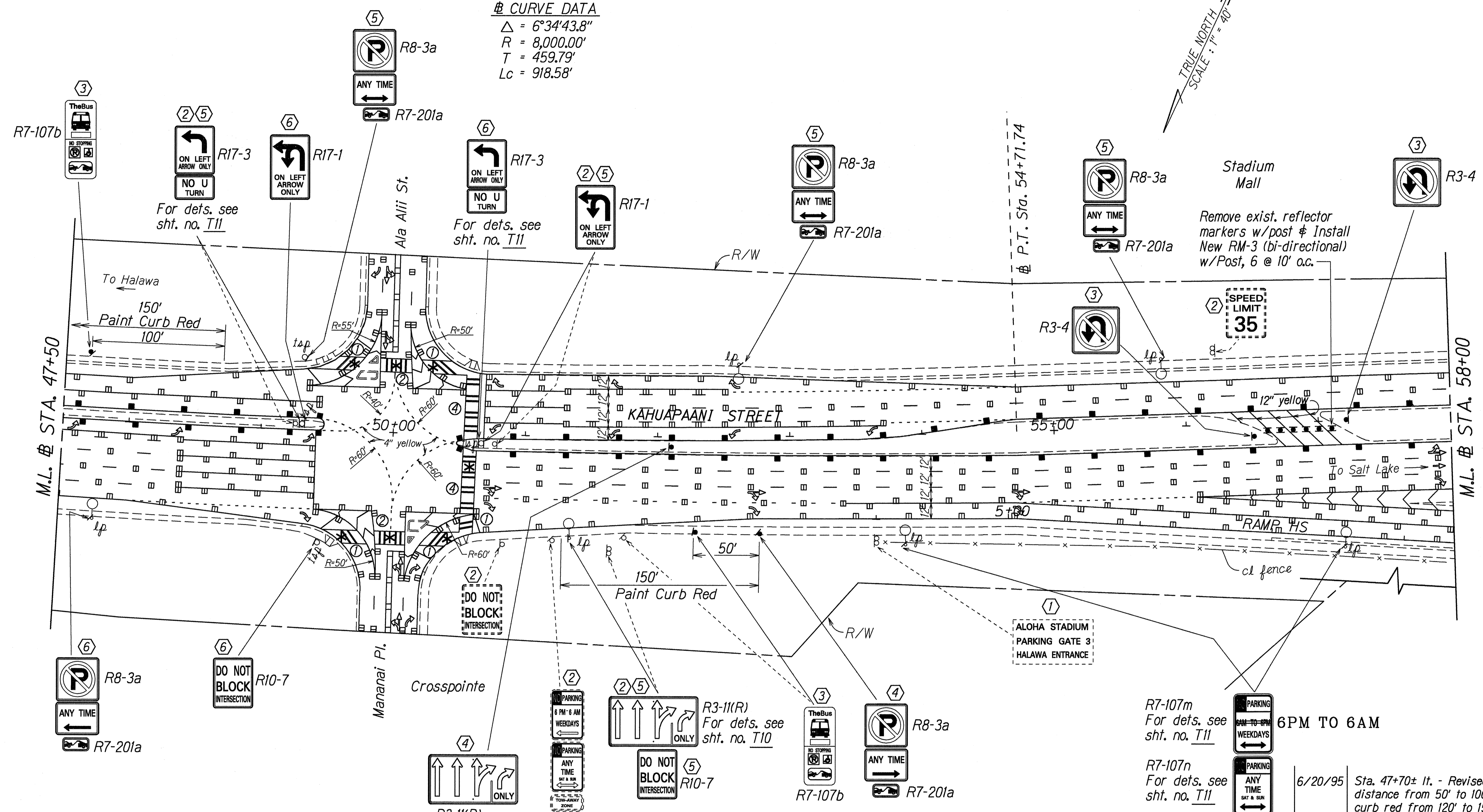
- KEY:**
- ① Exist. Sign(s) & Post(s) to Remain
  - ② Remove Exist. Sign(s) w/Post(s)
  - ③ Remove Exist. Sign(s) w/Post(s) & Install New Sign(s) w/Post(s)
  - ④ Install New Sign(s) w/Post(s)
  - ⑤ Install New Sign on Exist. Light/Traffic Standard
  - ⑥ Remove Exist. Sign(s) & Install New on Exist. Light/Traffic Signal

6/20/95	Revised note for sign D-6.
DATE	REVISION
STATE OF HAWAII DEPARTMENT OF TRANSPORTATION HIGHWAYS DIVISION <b>PAVEMENT MARKING &amp;          SIGNING PLAN</b> KAHUAPAANI ST. RESURFACING Ulune St. to Salt Lake Blvd. Fed. Aid Project No. STP-724(1) Scale: 1"=40' Date: June, 1995	
SHEET No. 16 OF 16 SHEETS	

FED. ROAD DIST. NO.	STATE	FED. AID PROJ. NO.	FISCAL YEAR	SHEET NO.	TOTAL SHEETS
HAWAII	HAW.	STP-724(1)	1995	33	42

**⊕ CURVE DATA**  
 $\Delta = 6^{\circ}34'43.8''$   
 $R = 8,000.00'$   
 $T = 459.79'$   
 $Lc = 918.58'$

TRUE NORTH  
SCALE: 1" = 40'



\*See Note on Page AS-BUILT ADD. 27

**KEY:**

- ① Exist. Sign(s) & Post(s) to Remain
- ② Remove Exist. Sign(s) w/Post(s)
- ③ Remove Exist. Sign(s) w/Post(s) & Install New Sign(s) w/Post(s)
- ④ Install New Sign(s) w/Post(s)
- ⑤ Install New Sign on Exist. Light/Traffic Standard
- ⑥ Remove Exist. Sign(s) & Install New on Exist. Light/Traffic Signal

LEGEND FOR AS-BUILT POSTINGS	
	Squiggly line for as-built deletion
	Double line for as-built deletion
Roadway	Text for as-built posting

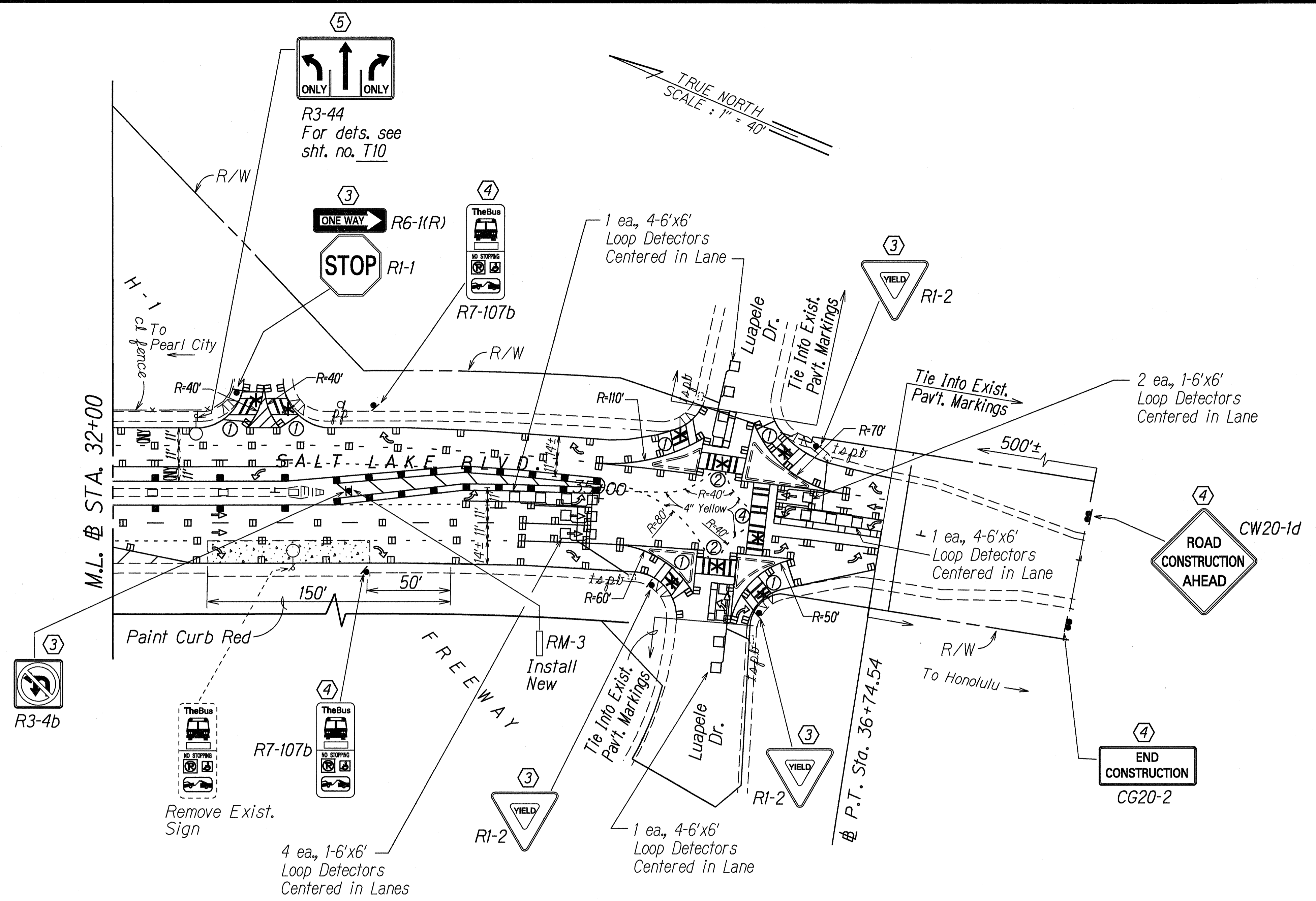
DESIGNED BY	DATE
DRAWN BY	5/28/95
TRACED BY	
DESIGNED BY	
QUANTITIES BY	
CHECKED BY	

6/20/95	Sta. 47+70± It. - Revised bus stop distance from 50' to 100' & paint curb red from 120' to 150'
DATE	REVISION

STATE OF HAWAII  
DEPARTMENT OF TRANSPORTATION  
HIGHWAYS DIVISION  
**PAVEMENT MARKING & SIGNING PLAN**  
**KAHUAPAANI ST. RESURFACING**  
Ulune St. to Salt Lake Blvd.  
Fed. Aid Project No. STP-724(1)  
Scale: 1"=40' Date: June, 1995  
SHEET No. 77 OF 16 SHEETS



FED. ROAD DIST. NO.	STATE	FED. AID PROJ. NO.	FISCAL YEAR	SHEET NO.	TOTAL SHEETS
HAWAII	HAW.	STP-724(1)	1995	35	42



**△ CURVE DATA**  
 $\Delta = 357^{\circ}24'24''$   
 $R = 1,900.00'$   
 $T = 43.01'$   
 $C = 85.99'$   
 $Lc = 86.00'$

\*See Note on Page AS-BUILT ADD. 27

- KEY:**
- ① Exist. Sign(s) & Post(s) to Remain
  - ② Remove Exist. Sign(s) w/Post(s)
  - ③ Remove Exist. Sign(s) w/Post(s) & Install New Sign(s) w/Post(s)
  - ④ Install New Sign(s) w/Post(s)
  - ⑤ Install New Sign on Exist. Light/Traffic Standard
  - ⑥ Remove Exist. Sign(s) & Install New on Exist. Light/Traffic Signal

LEGEND FOR AS-BUILT POSTINGS	
	Squiggly line for as-built deletion
	Double line for as-built deletion
Roadway	Text for as-built posting

6/20/95	Revised Loop Detectors
DATE	REVISION
STATE OF HAWAII DEPARTMENT OF TRANSPORTATION HIGHWAYS DIVISION <b>PAVEMENT MARKING &amp; SIGNING PLAN</b> KAHUAPAANI ST. RESURFACING Ulune St. to Salt Lake Blvd. Fed. Aid Project No. STP-724(1) Scale: 1"=40' Date: June, 1995	
SHEET No. T9 OF 16 SHEETS	

SURVEY PLOTTED BY	DATE	5/2/95
DRAWN BY		
NOTE BOOK		
DESIGNED BY		
QUANTITIES BY		
CHECKED BY		