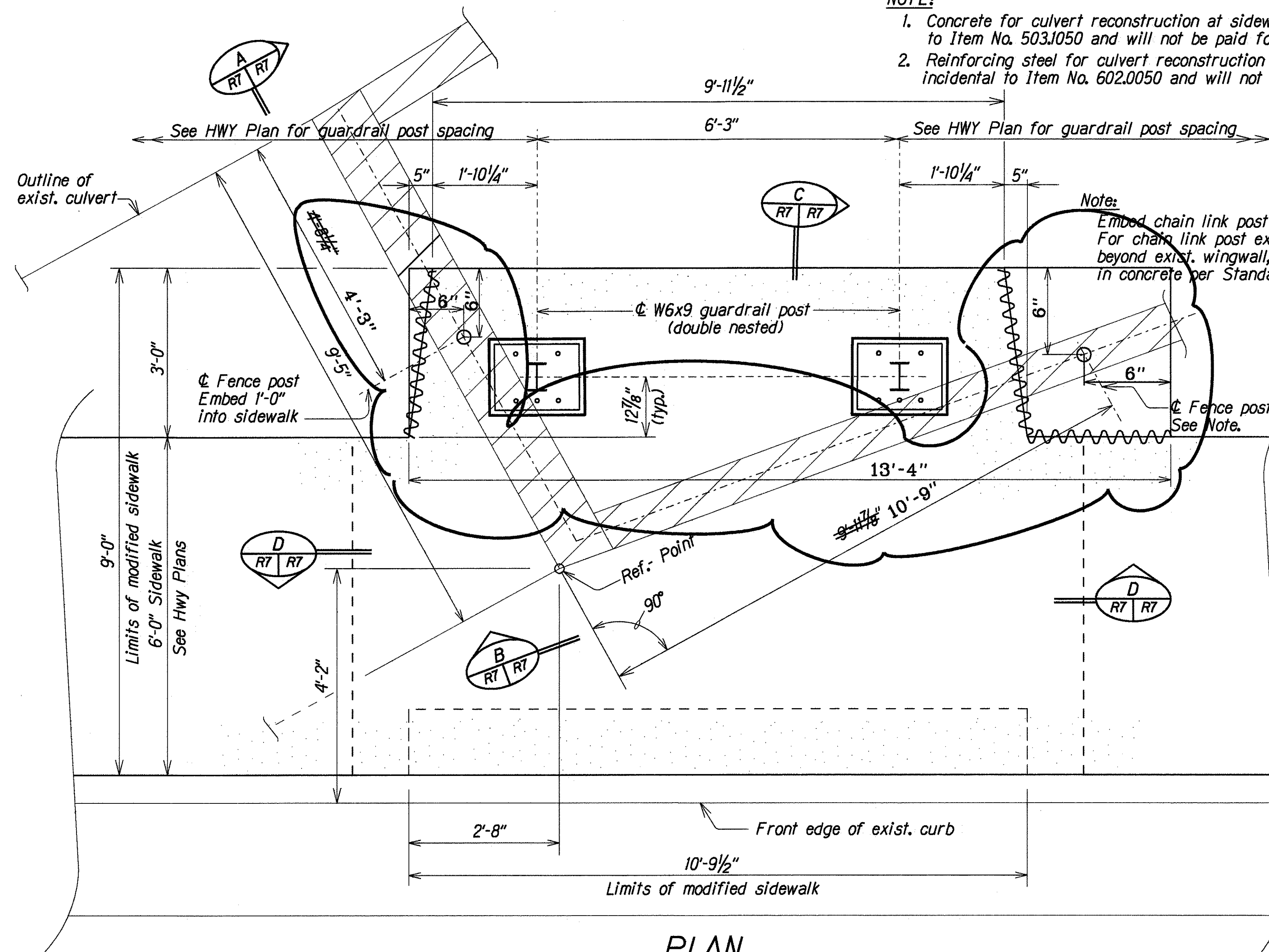


FED. ROAD DIST. NO.	STATE	FED. AID PROJ. NO.	FISCAL YEAR	SHEET NO.	TOTAL SHEETS
HAWAII	HAW.	STP-0300(39)	1996	25	70

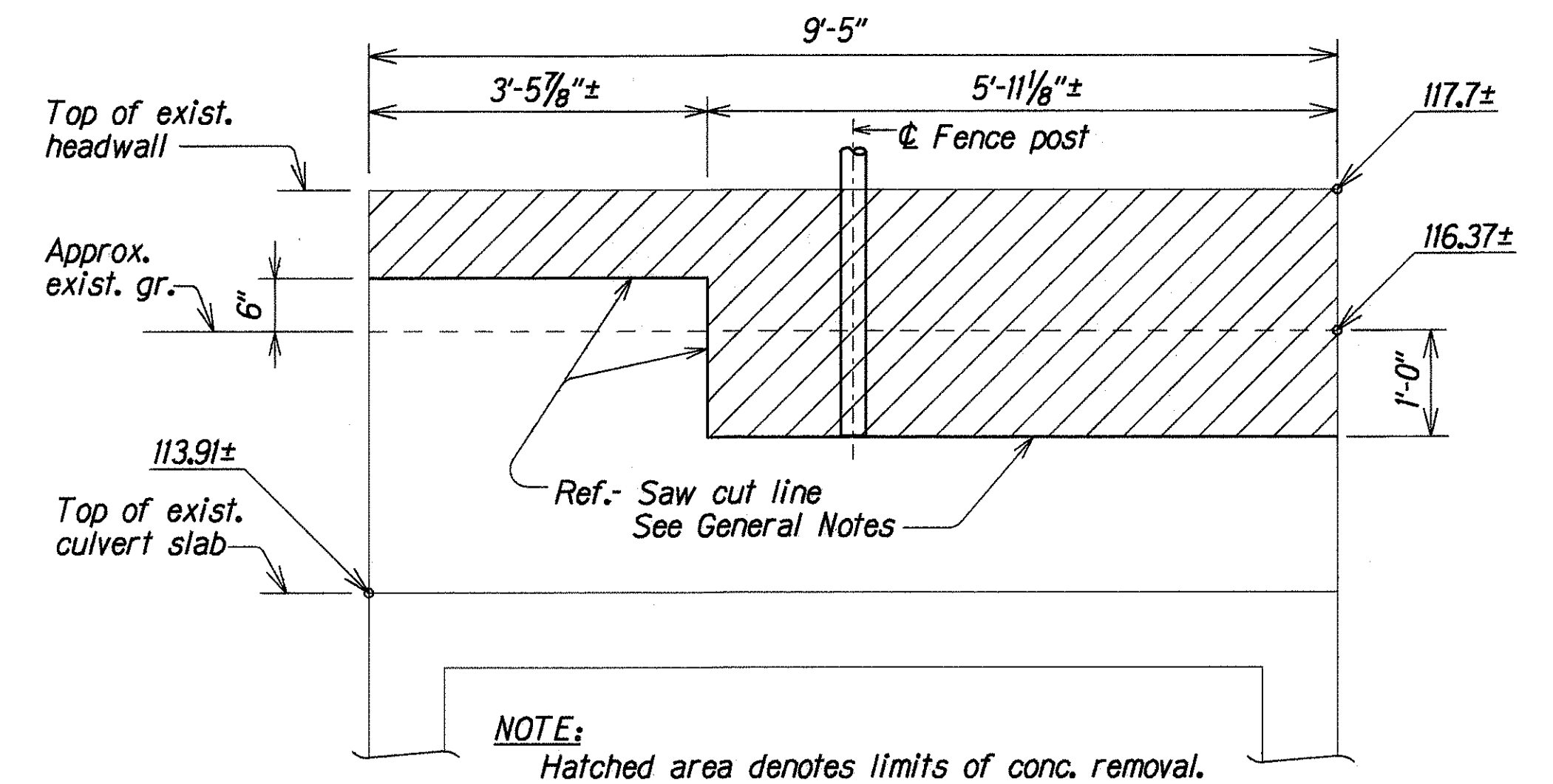
NOTE:

- Concrete for culvert reconstruction at sidewalk shall be incidental to Item No. 503.050 and will not be paid for separately.
- Reinforcing steel for culvert reconstruction at sidewalk shall be incidental to Item No. 602.050 and will not be paid for separately.



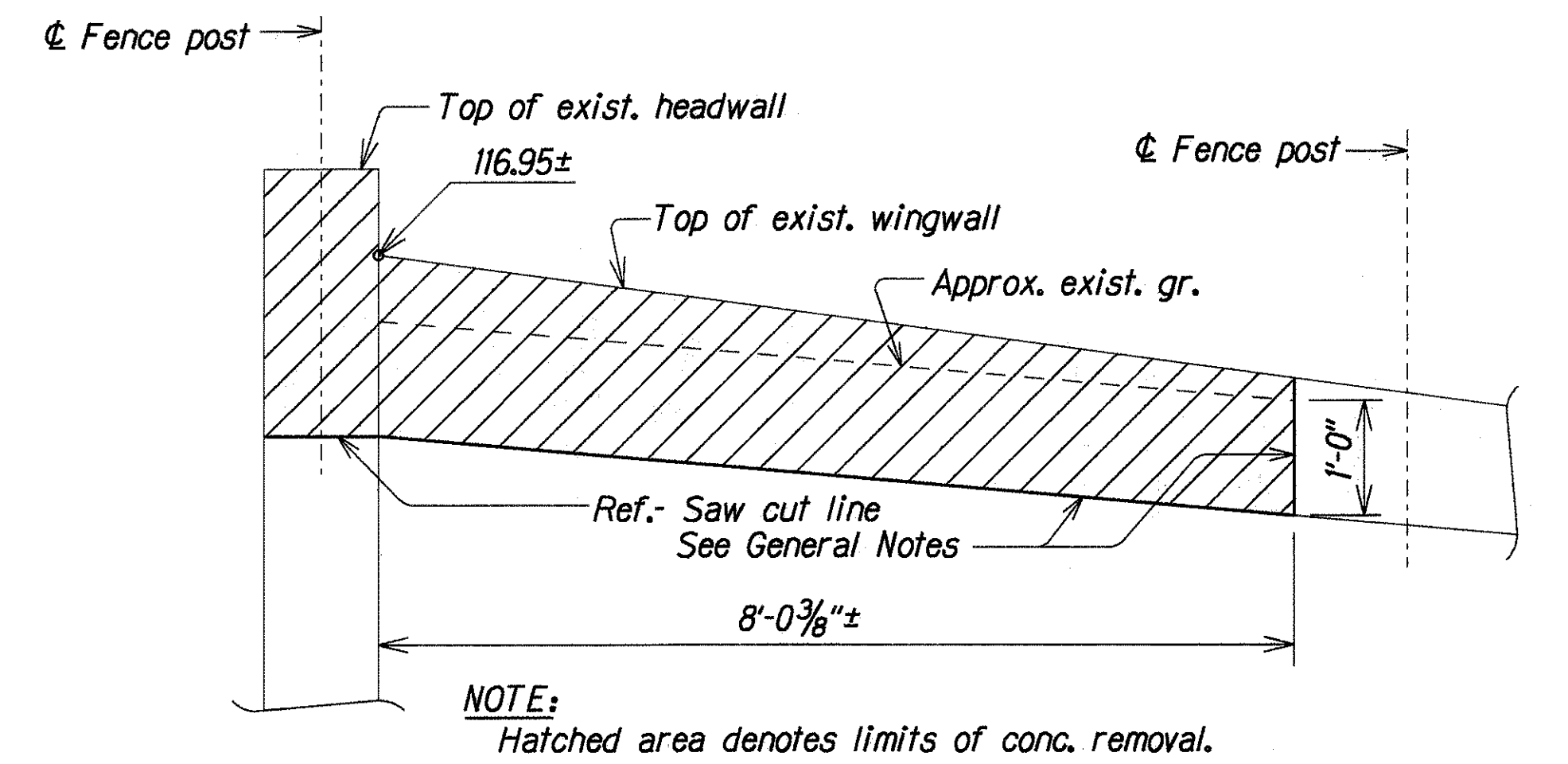
PLAN

Scale: 3/4" = 1'-0"



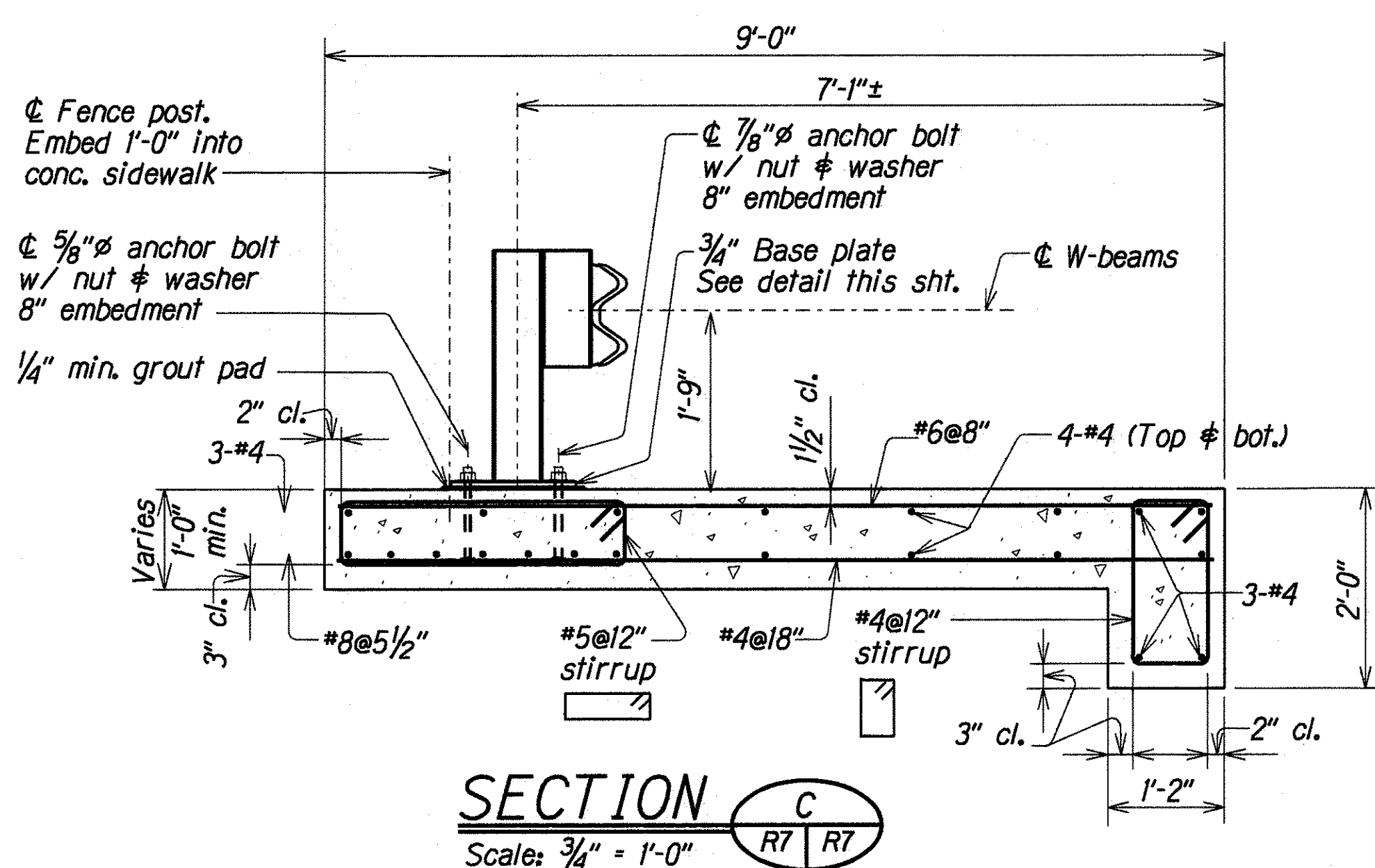
ELEVATION A

Scale: 3/4" = 1'-0"



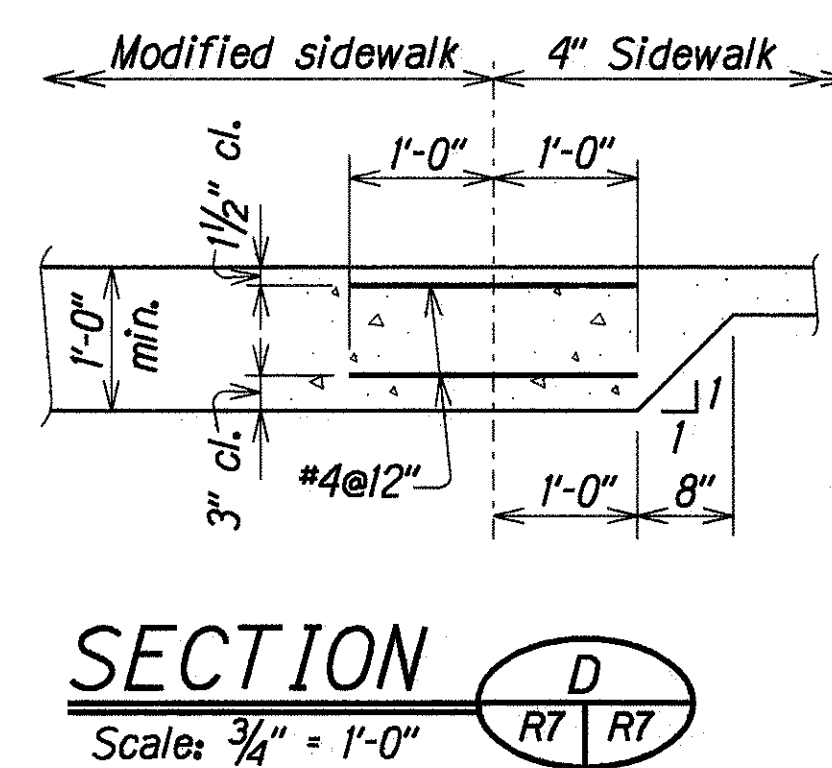
ELEVATION B

Scale: 3/4" = 1'-0"



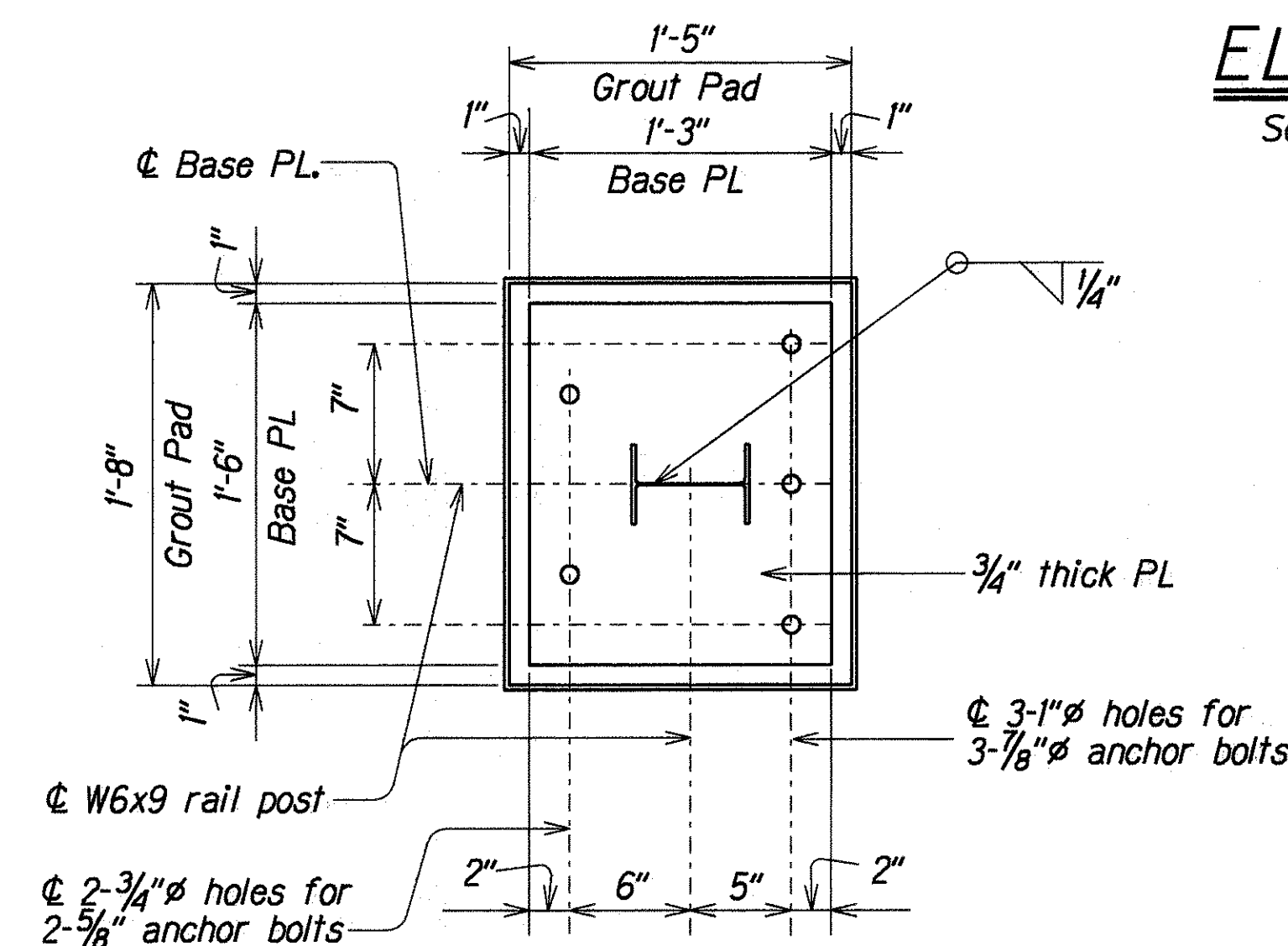
SECTION C

Scale: 3/4" = 1'-0"



SECTION D

Scale: 3/4" = 1'-0"



BASE PLATE DETAIL

Scale: 1/2" = 1'-0"

LEGEND FOR AS-BUILT POSTINGS

	Squiggly line for as-built deletion
	Double line for as-built deletion
	Text for as-built posting

STATE OF HAWAII
DEPARTMENT OF TRANSPORTATION
HIGHWAYS DIVISION

RETAINING WALL
CULVERT RECONSTRUCTION AT SIDEWALK
ULUNE STREET @ STA. 43+56±
Ulune Street And Halawa Valley Road Improvements
Halawa Heights Road To Halawa Valley Road
Ulune Street To Iwaiwa Street
Project No. STP-0300(39) Date: Mar. 1996

Note: This tracing prepared during "As-Built" posting.

"AS-BUILT"

DATE	BY
FEB 1996	LMA
FEB 1996	JEL
FEB 1996	JEL
FEB 1996	JEL

ORIGINAL PLAN
NOTES BOOK
CHECKED BY