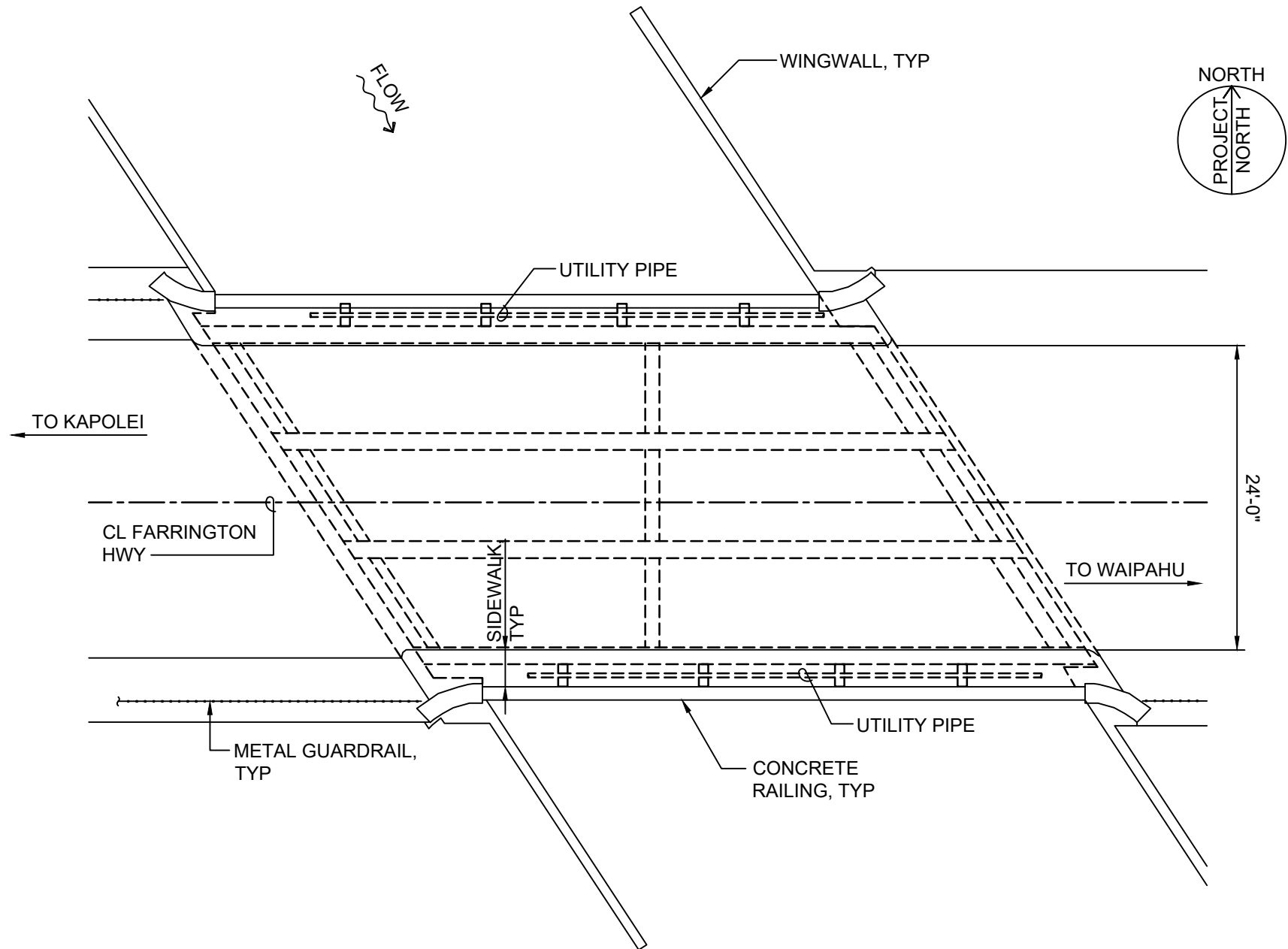


## **APPENDIX B:**

### **FIGURES**



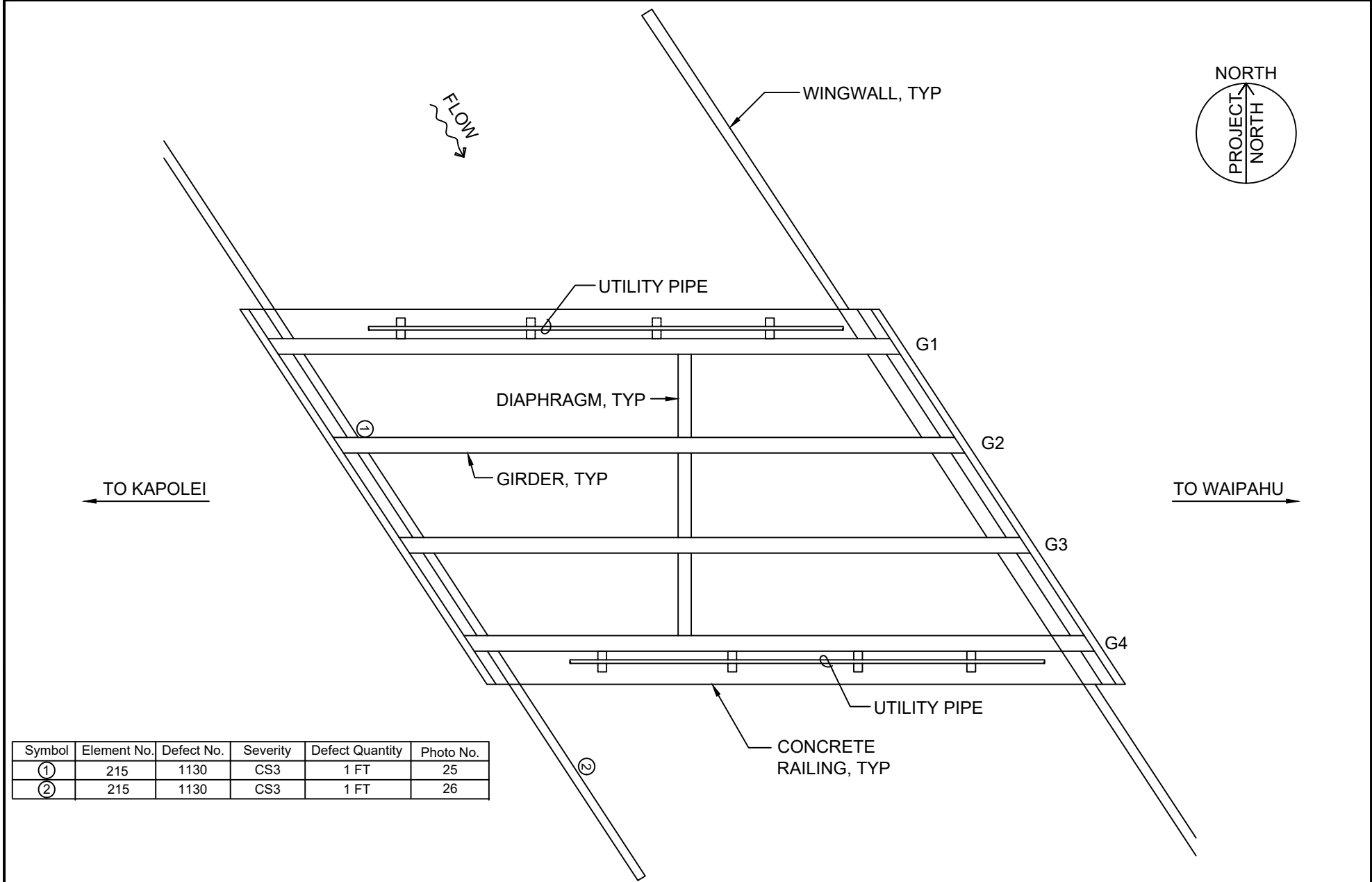
BRIDGE PLAN

NOT TO SCALE

BRIDGE NAME: FARRINGTON HIGHWAY BRIDGE OVER HONOULIULI STREAM

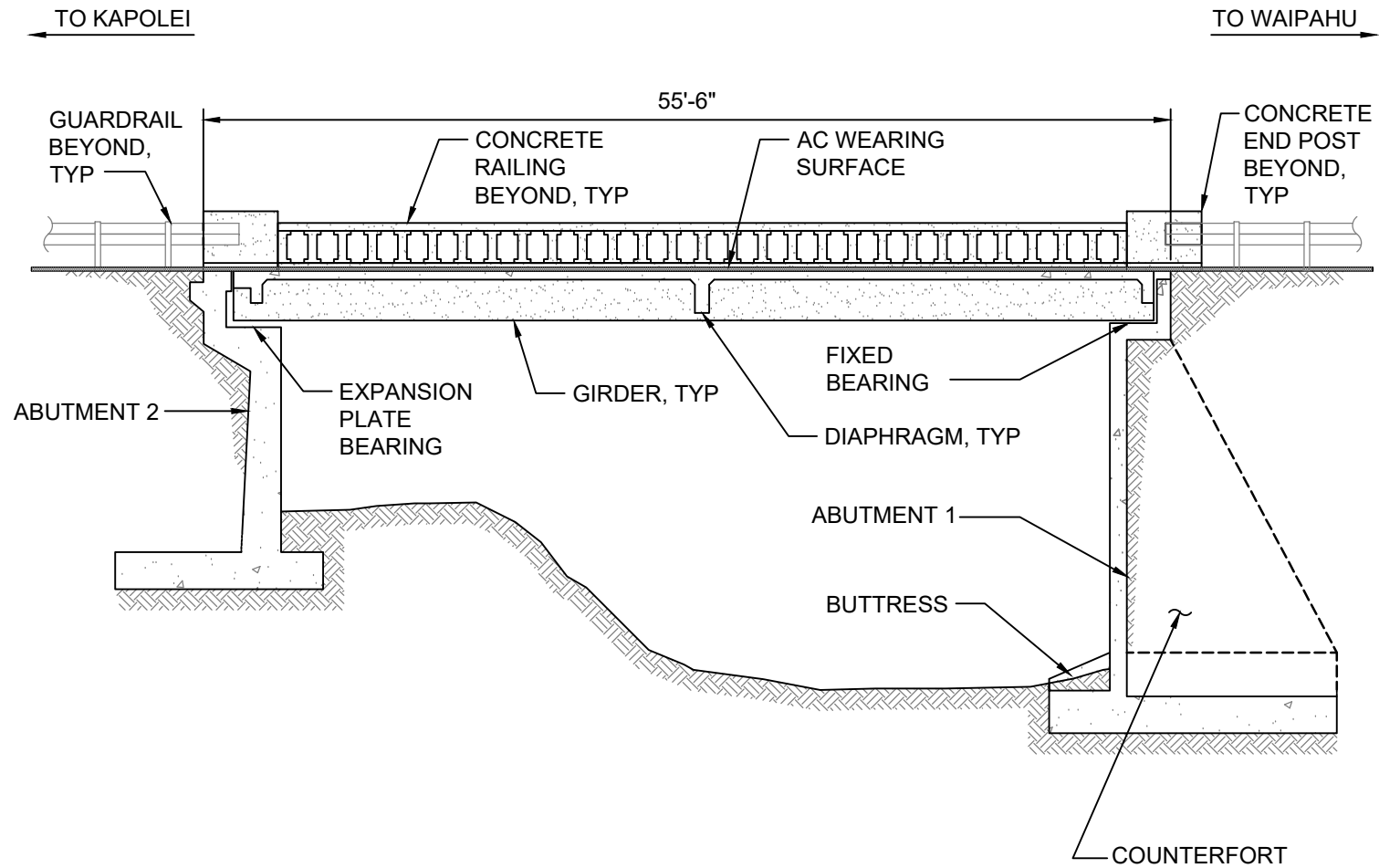
City Bridge No. 922

Structure No. 003922001100001



Symbol	Element No.	Defect No.	Severity	Defect Quantity	Photo No.
①	215	1130	CS3	1 FT	25
②	215	1130	CS3	1 FT	26

SOFFIT PLAN		NOT TO SCALE
BRIDGE NAME: FARRINGTON HIGHWAY BRIDGE OVER HONOULIULI STREAM		
City Bridge No. 922	Structure No. 003922001100001	



LONGITUDINAL SECTION

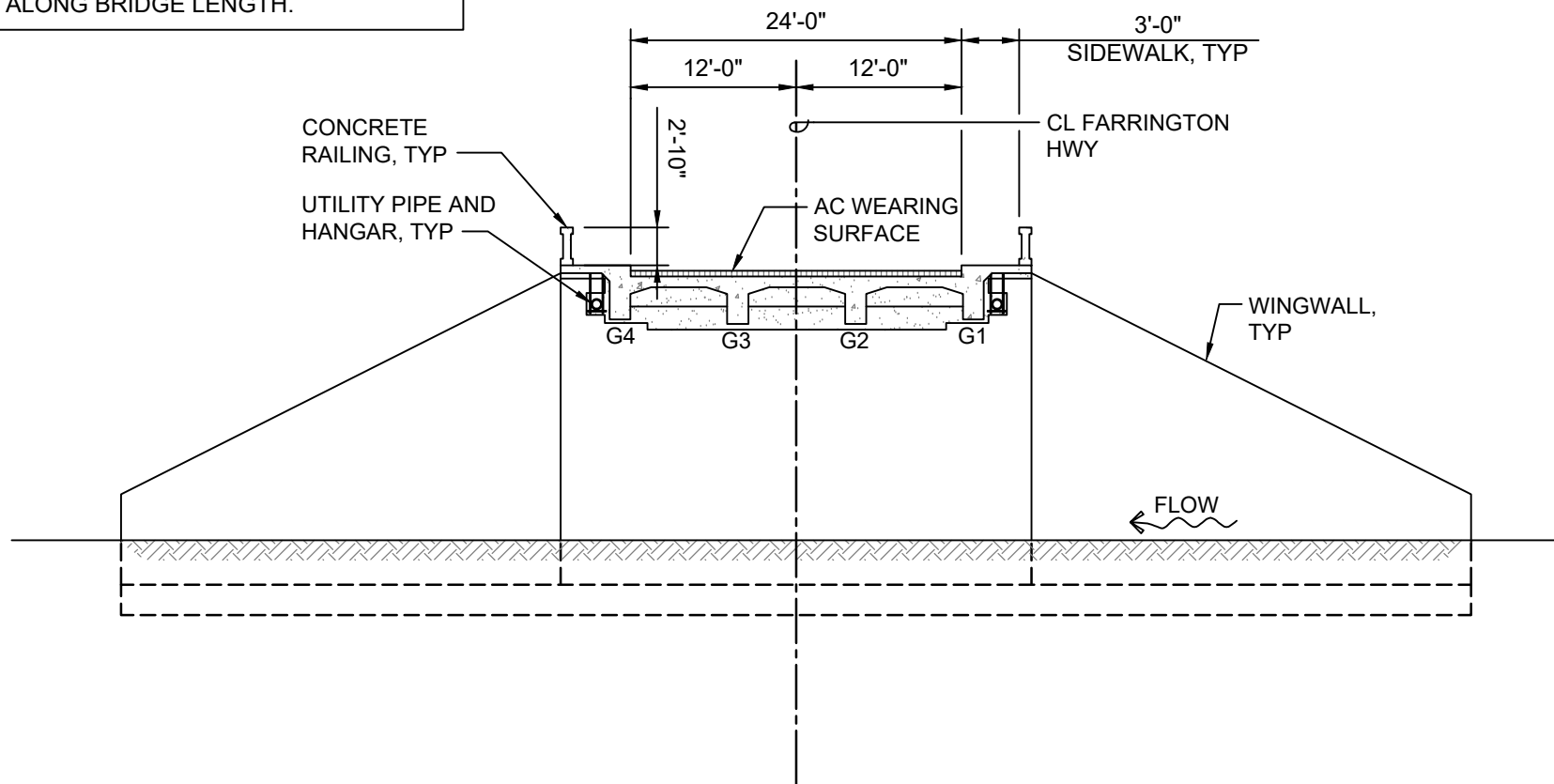
NOT TO SCALE

BRIDGE NAME: FARRINGTON HIGHWAY BRIDGE OVER HONOULIULI STREAM

City Bridge No. 922

Structure No. 003922001100001

NOTE:  
 CONCRETE RAILING HEIGHT = 2'-10"  
 RAILING HEIGHT WAS TAKEN AT AN  
 ARBITRARY LOCATION AND MAY VARY  
 ALONG BRIDGE LENGTH.



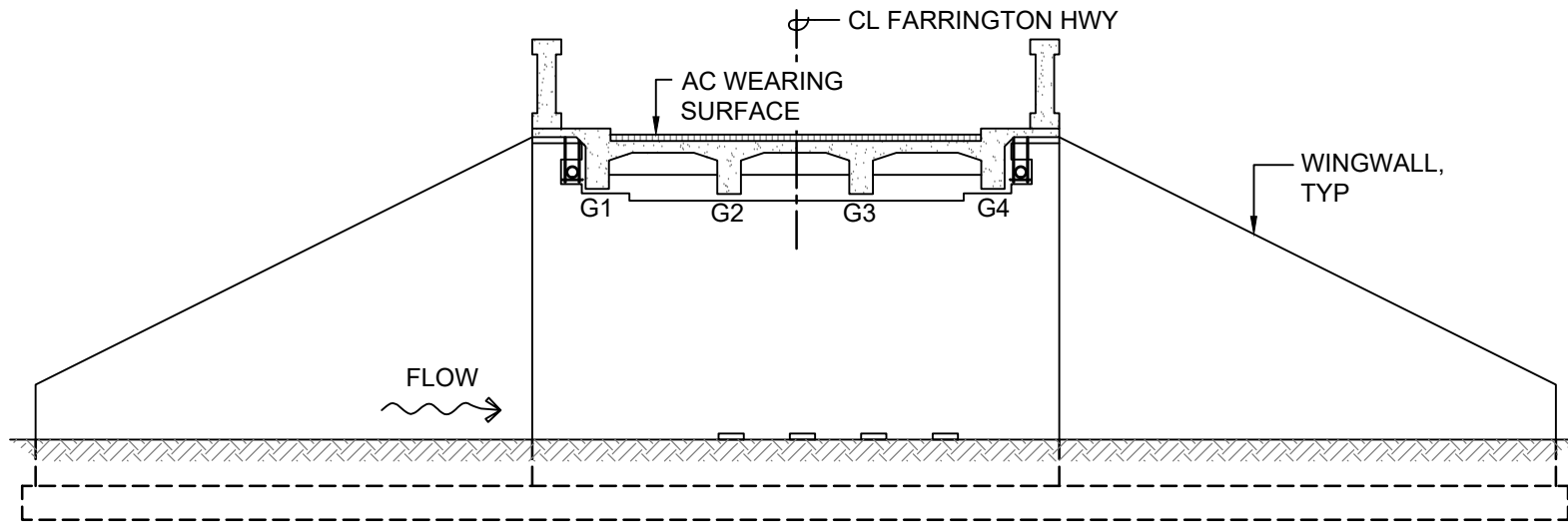
TRANSVERSE SECTION

NOT TO SCALE

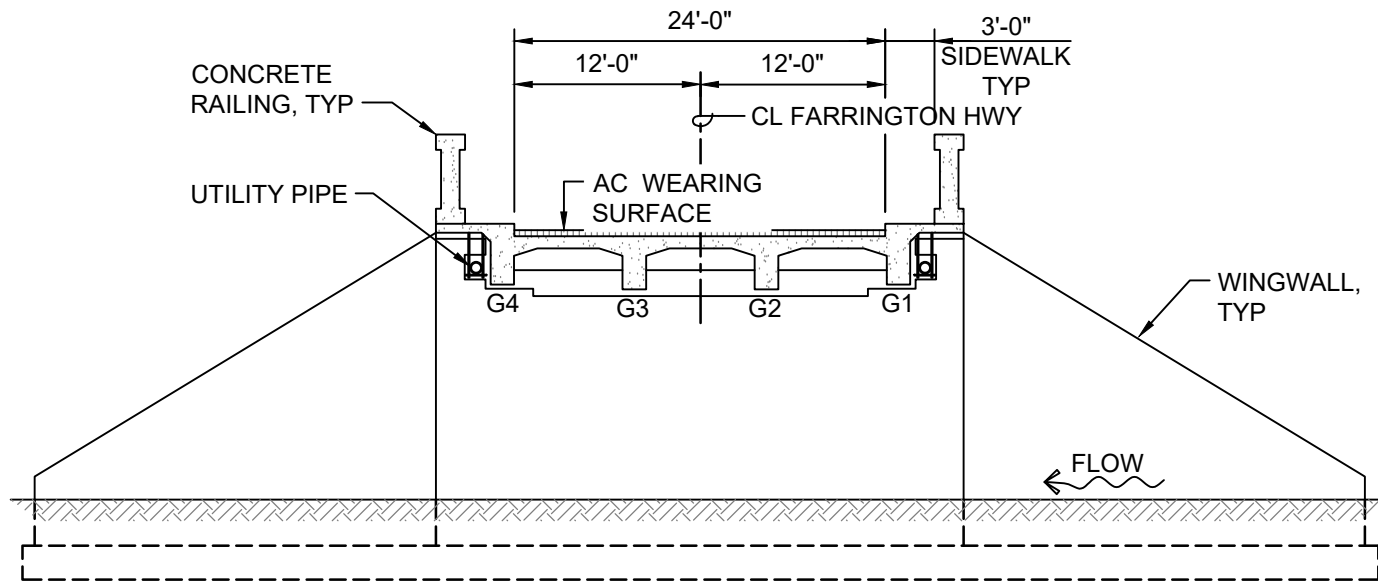
BRIDGE NAME: FARRINGTON HIGHWAY BRIDGE OVER HONOULIULI STREAM

City Bridge No. 922

Structure No. 003922001100001

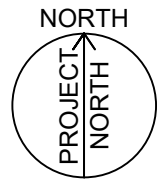


**ABUTMENT 1 ELEVATION**



**ABUTMENT 2 ELEVATION**

ABUTMENT ELEVATIONS	NOT TO SCALE
BRIDGE NAME: FARRINGTON HIGHWAY BRIDGE OVER HONOULIULI STREAM	
City Bridge No. 922	Structure No. 003922001100001



FLOW

NOTE:  
ELEVATION 0.00 IS TAKEN AT TOP  
OF CONCRETE RAILING DIRECTLY  
ABOVE LEFT ABUTMENT (LOOKING  
DOWNSTREAM) IN-LINE WITH FACE  
OF BREASTWALL.

TO KAPOLEI

CL FARRINGTON  
HWY

TO WAIPAHU

SOUNDINGS DATUM  
REFERENCE POINT  
ELEVATION = 0.00

Clarify, railing has  
a step at this  
location(End post/  
railing).

KEY  
0.00  
ELEVATION  
IN FEET

ITEM 113 RATING = 3  
FROM PREVIOUS  
INSPECTION DATED 11/6/17

BRIDGE PLAN - SOUNDINGS

NOT TO SCALE

BRIDGE NAME: FARRINGTON HIGHWAY BRIDGE OVER HONOULIULI STREAM

City Bridge No. 922

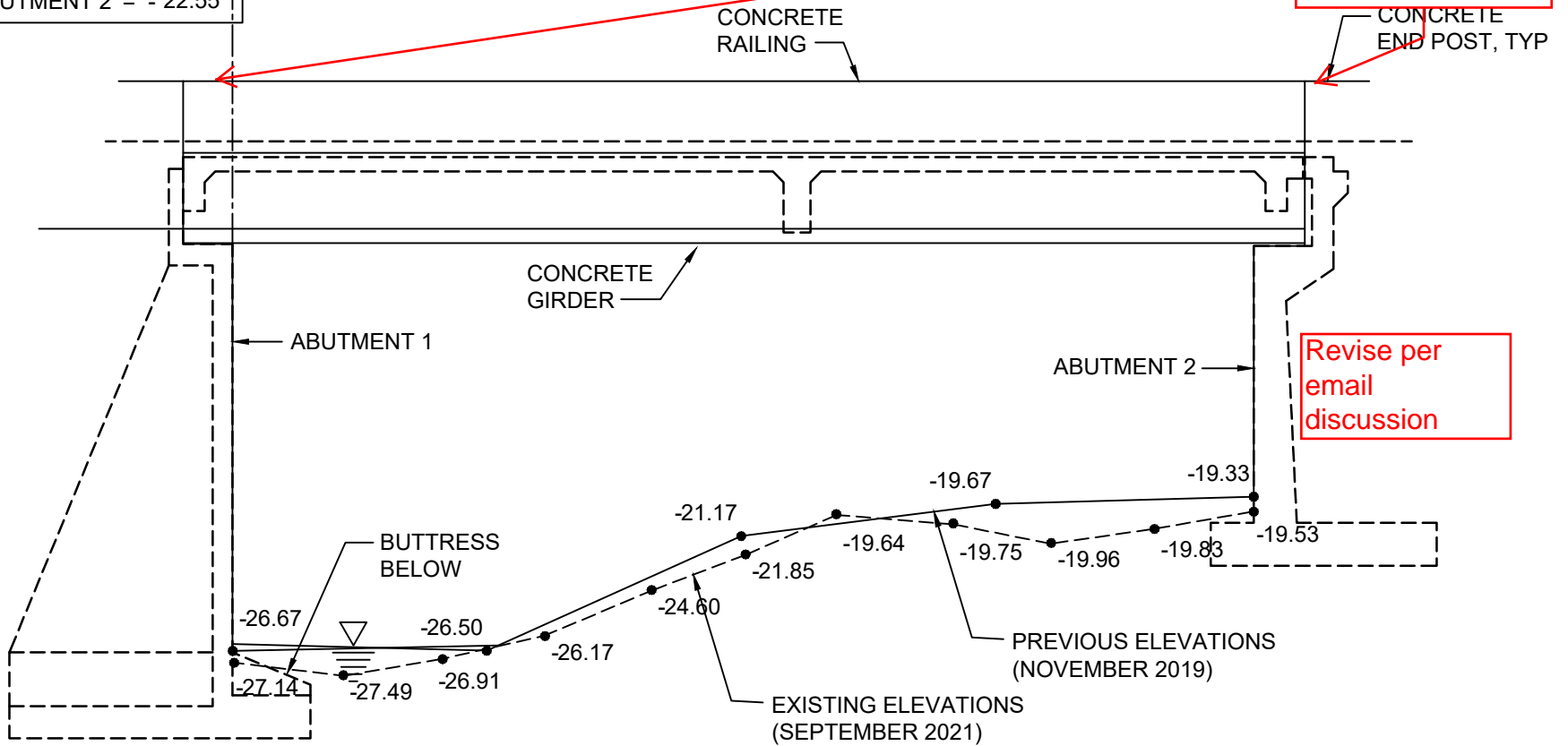
Structure No. 003922001100001

BASED ON 1938 AS-BUILTS  
BOTTOM OF SPREAD  
FOOTING ELEVATION:

ABUTMENT 1 = - 30.58

ABUTMENT 2 = - 22.55

Revise Sketch to  
show end post  
higher, copy from  
Longitudinal  
section



Revise per  
email  
discussion

KEY

0.00

ELEVATION IN FEET (NOVEMBER 2019 VALUES BY OTHERS)

0.00

ELEVATION IN FEET (SEPTEMBER 2021)

UPSTREAM ELEVATION - SOUNDINGS

NOT TO SCALE

BRIDGE NAME: FARRINGTON HIGHWAY BRIDGE OVER HONOULIULI STREAM

City Bridge No. 922

Structure No. 003922001100001



BASED ON 1938 AS-BUILTS  
BOTTOM OF SPREAD  
FOOTING ELEVATION:

ABUTMENT 1 = - 30.79  
ABUTMENT 2 = - 22.58

SOUNDINGS DATUM  
REFERENCE POINT  
ELEVATION = 0.00

Revise to show end  
post higher,  
clarify if reference  
point is located at  
end post(higher) or  
railing(Lower)

CONCRETE  
RAILING

CONCRETE  
END POST, TYP

CONCRETE  
GIRDER

ABUTMENT 2

ABUTMENT 1

-19.50

-19.08

-19.77

-20.22

-19.85

-19.81

-21.82

-22.67

-22.70

-26.50

-25.27

-27.58

-27.85

-27.33

-27.67

-28.51

-28.34

EXISTING ELEVATIONS  
(SEPTEMBER 2021)

PREVIOUS ELEVATIONS  
(NOVEMBER 2019)

BUTTRESS  
BELOW

KEY

0.00

ELEVATION IN FEET (NOVEMBER 2019 VALUES BY OTHERS)

0.00

ELEVATION IN FEET (SEPTEMBER 2021)

Revise per  
email  
discussion

DOWNSTREAM ELEVATION - SOUNDINGS

NOT TO SCALE

BRIDGE NAME: FARRINGTON HIGHWAY BRIDGE OVER HONOULIULI STREAM

City Bridge No. 922

Structure No. 003922001100001