

APPENDIX A: PHOTOGRAPHS



PHOTO 1 EAST APPROACH LOOKING WEST



PHOTO 2 WEST APPROACH LOOKING EAST

Farrington Highway Bridge Over Honouliuli Stream
Bridge No. 922
Structure No. 003922001100001



PHOTO 3 UPSTREAM ELEVATION



PHOTO 4 DOWNSTREAM ELEVATION



PHOTO 5 LOAD POSTING SIGN ON FARRINGTON HIGHWAY AT
UPSTREAM EAST APPROACH TO BRIDGE



PHOTO 6 LOAD POSTING SIGN ON FARRINGTON HIGHWAY AT
DOWNSTREAM WEST APPROACH TO BRIDGE

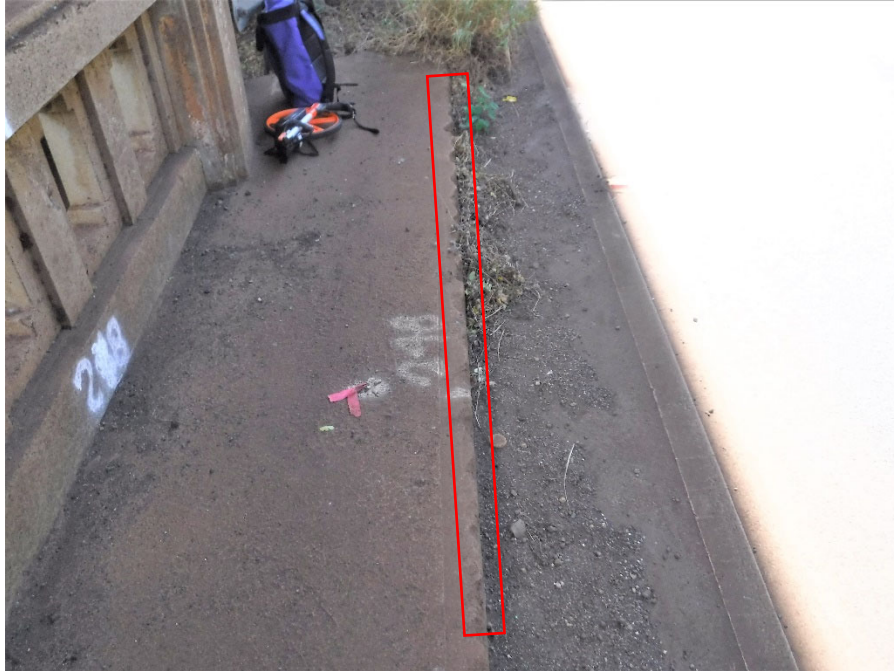


PHOTO 7 CURB SPALLS AT EAST END OF UPSTREAM SIDEWALK



PHOTO 8 3-1/2" VERTICAL DIFFERENTIAL AT WEST APPROACH TO UPSTREAM SIDEWALK



PHOTO 9 3" VERTICAL DIFFERENTIAL AND 1/2" GAP AT WEST APPROACH TO DOWSTREAM SIDEWALK AND 6"X6" EDGE SPALL ON CURB



PHOTO 10 3'X4" DELAMINATION (3FT 1080 CS2) ON EXTERIOR FACE OF UPSTREAM BOTTOM RAIL NEAR WEST END OF BRIDGE



PHOTO 11 TYPICAL DELAMINATION (1080 CS2) ON EXTERIOR FACE OF UPSTREAM RAILING PICKET



PHOTO 12 TYPICAL DELAMINATION (1080 CS2) ON UPSTREAM TOP RAIL



PHOTO 13 2 FT LONG HORIZONTAL CRACK AND DELAMINATION
(2FT 1080 CS2) ON INTERIOR FACE OF UPSTREAM EAST
END POST



PHOTO 14 4FT LONG HORIZONTAL CRACK AND DELAMINATION
(4FT 1080 CS2) ON EXTERIOR FACE OF DOWNSTREAM
EAST END POST



PHOTO 15 EXPOSED REBAR WITHOUT SECTION LOSS (1FT 1090 CS2) ON DOWNSTREAM BRIDGE RAILING



PHOTO 16 TYPICAL MODERATE WIDTH CRACK (1130 CS2) ON BOTH BRIDGE RAILINGS



PHOTO 17 1'X6" SPALL WITH EXPOSED ANCHOR BOLT ON
CONCRETE SPACER BLOCK AT DOWNSTREAM WEST
END POST



PHOTO 18 WEARING SURFACE



PHOTO 19 MODERATE WIDTH CRACK WITH EFFLORESCENCE (2SF 1120 CS2) ON TOP FLANGE SOFFIT AND DIAPHRAGM AT ABUTMENT 2 NEAR GIRDER G2



PHOTO 20 MODERATE WIDTH DIAGONAL CRACK WITH EFFLORESCENCE (8SF 1120 CS2) ON TOP FLANGE SOFFIT BETWEEN GIRDERS G3 AND G4 NEAR ABUTMENT 1



PHOTO 21 MODERATE WIDTH TRANSVERSE CRACKS WITH EFFLORESCENCE (3SF 1120 CS2) ON UPSTREAM CANTILEVER TOP FLANGE SOFFIT NEAR ABUTMENT 2



PHOTO 22 6"X2"X2" EDGE SPALL (1FT 1080 CS2) ON GIRDER G4



PHOTO 23 4"X4" EDGE SPALL WITH EXPOSED REBAR WITHOUT SECTION LOSS (1FT 1090 CS2) ON GIRDER G3



PHOTO 24 TYPICAL MODERATE WIDTH DIAGONAL CRACK (1130 CS2) ON ALL GIRDERS



PHOTO 25 ABUTMENT 1



PHOTO 26 ABUTMENT 2



PHOTO 27 WIDE VERTICAL CRACK (1FT 1130 CS3) ON ABUTMENT 2
BELOW GIRDER G2



PHOTO 28 WIDE VERTICAL CRACK (1FT 1130 CS3) ON
DOWNSTREAM WEST WINGWALL



PHOTO 29 TYPICAL MODERATE WIDTH CRACKS (1130 CS2) ON BOTH ABUTMENTS AND ALL WINGWALLS



PHOTO 30 PARTIAL ABRASION (1190 CS2) ALONG ENTIRE LENGTH OF ABUTMENT 1 AND WINGWALLS



PHOTO 31 JOINT FILLER PROTRUDING FROM JOINT AT
DOWNSTREAM EAST WINGWALL AND 1/2" GAP
BETWEEN DOWNSTREAM EAST WINGWALL AND
CHANNEL WALL



PHOTO 32 UPSTREAM CHANNEL WITH HEAVY VEGETATION
GROWTH



PHOTO 33 DOWNSTREAM CHANNEL WITH VEGETATION GROWTH