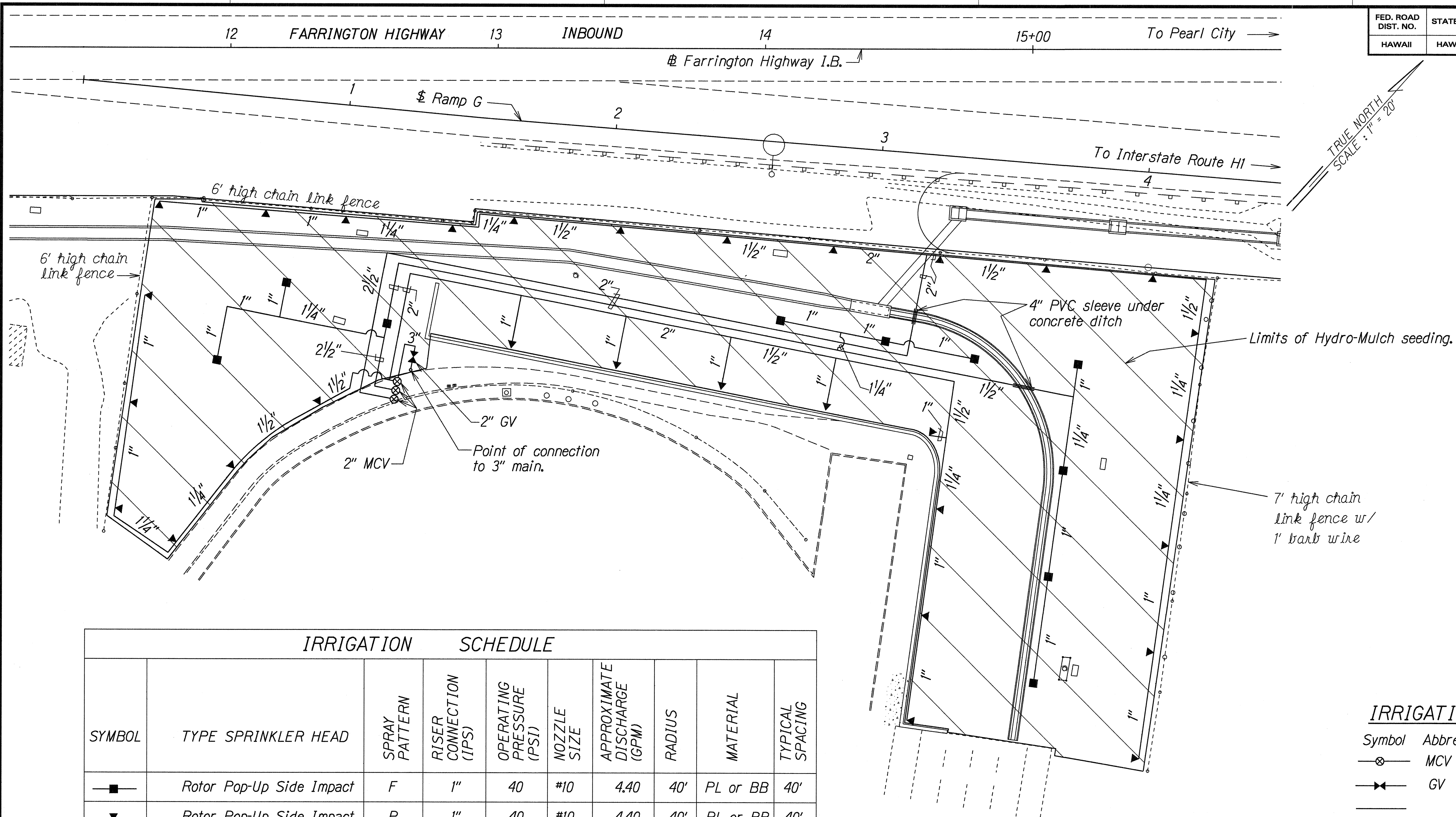


FED. ROAD DIST. NO.	STATE	PROJ. NO.	FISCAL YEAR	SHEET NO.	TOTAL SHEETS
HAWAII	HAW.	7101A-02-98	2000	21	22



IRRIGATION SCHEDULE								
SYMBOL	TYPE SPRINKLER HEAD	SPRAY PATTERN	RISER CONNECTION (IPS)	OPERATING PRESSURE (PSI)	NOZZLE SIZE	APPROXIMATE DISCHARGE (GPM)	RADIUS	TYPICAL SPACING
—■—	Rotor Pop-Up Side Impact	F	1"	40	#10	4.40	40'	40'
—▼—	Rotor Pop-Up Side Impact	P	1"	40	#10	4.40	40'	40'

F - Full Circle  
 P - Part Circle  
 PL - Plastic  
 BB - Brass or Bronze

#### IRRIGATION LEGEND

Symbol	Abbrev.
—⊗—	MCV Manual Control Valve
—>>—	GV Gate Valve
—	Plastic Pipe

#### IRRIGATION NOTES:

- Contractor shall locate the existing irrigation system and salvage equipment before installation of new system. Abandon existing irrigation pipes and give salvaged equipment to the school.
- Contractor shall connect to existing 3" water main and install a 2" gate valve before the manual control valves.
- Waipahu High School (DAGS) is required to maintain this new sprinkler system and the hydromulch and trees planted on the property once they are established, as specified in the specifications.
- Sprinkler System shall be paid for by lump sum in accordance with Section 616 of the Specifications.
- Hydro-Mulch seeding (39,000 S.F.) shall be paid for by Lump Sum in accordance with Section 641 of the Specifications.

STATE OF HAWAII  
DEPARTMENT OF TRANSPORTATION  
HIGHWAYS DIVISION

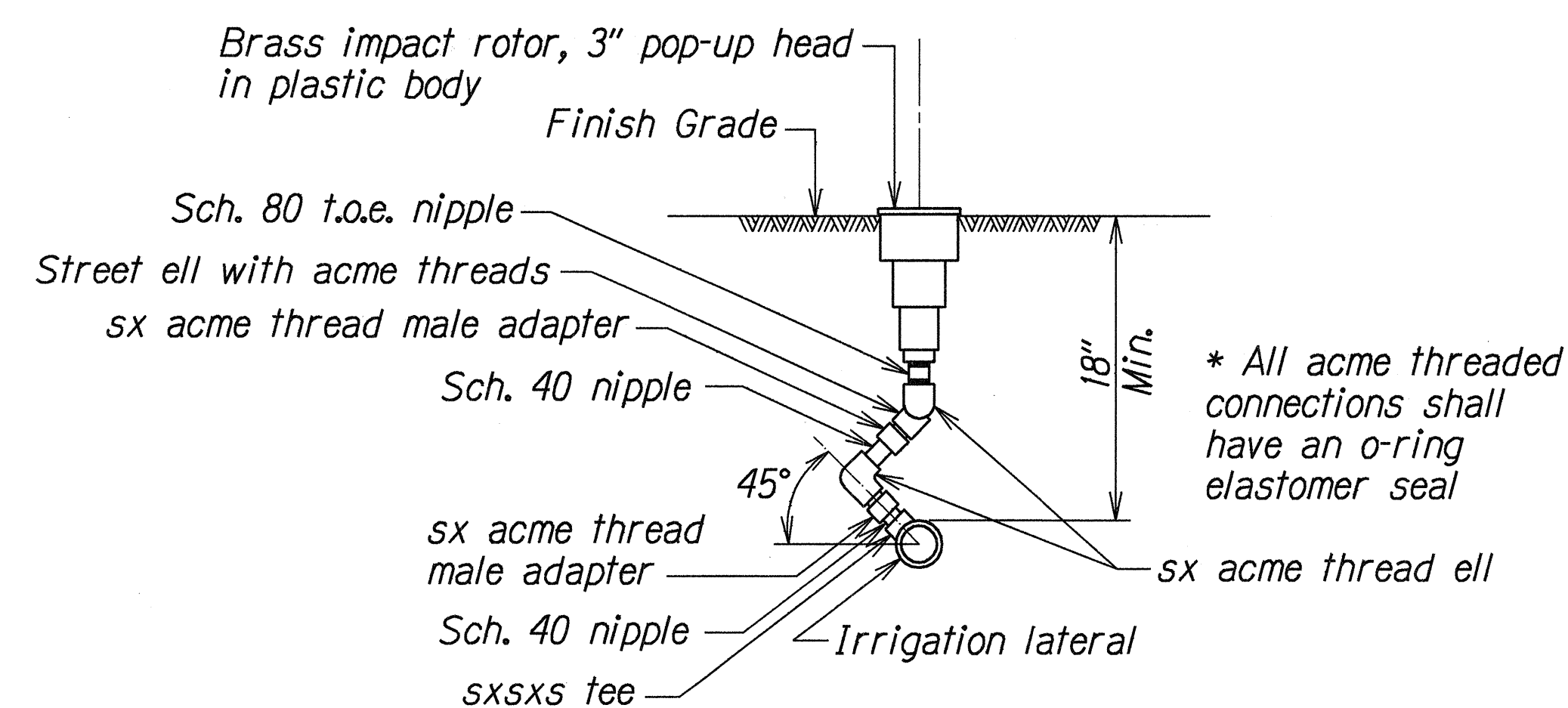
### IRRIGATION PLAN

FARRINGTON HIGHWAY RETAINING WALL  
 ABOVE WAIPAHU HIGH SCHOOL  
 ATHLETIC FIELD  
 PROJECT NO. 7101A-02-98

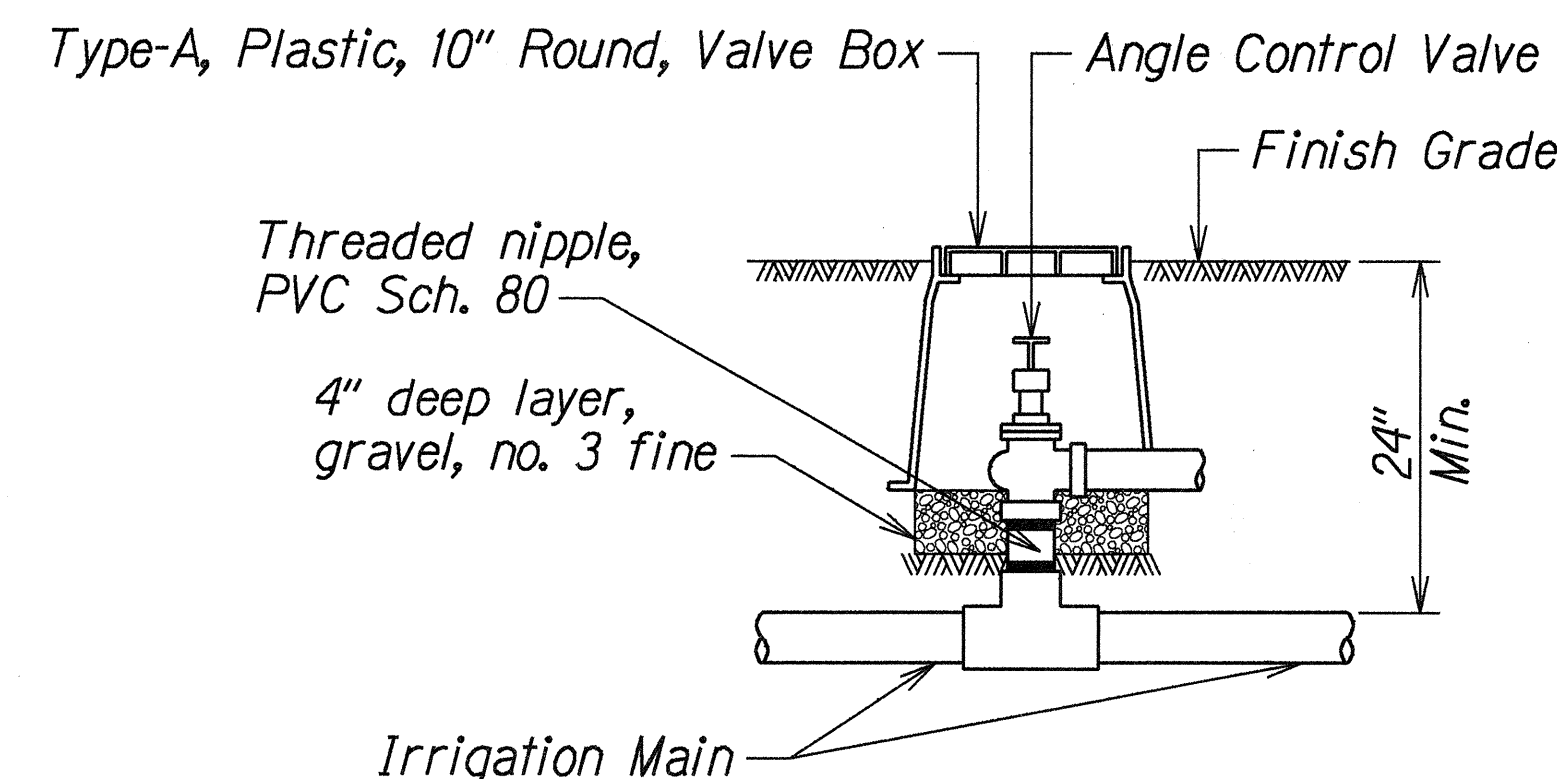
Scale: 1"=20'  
Date: Jan. 2000  
SHEET No. 21 OF 22 SHEETS

DESIGNED BY	DATE
DRAWN BY	1/18/00
CHECKED BY	
IN CHARGE	
NOTED BY	
QUANTITY BY	
REVISIONS	

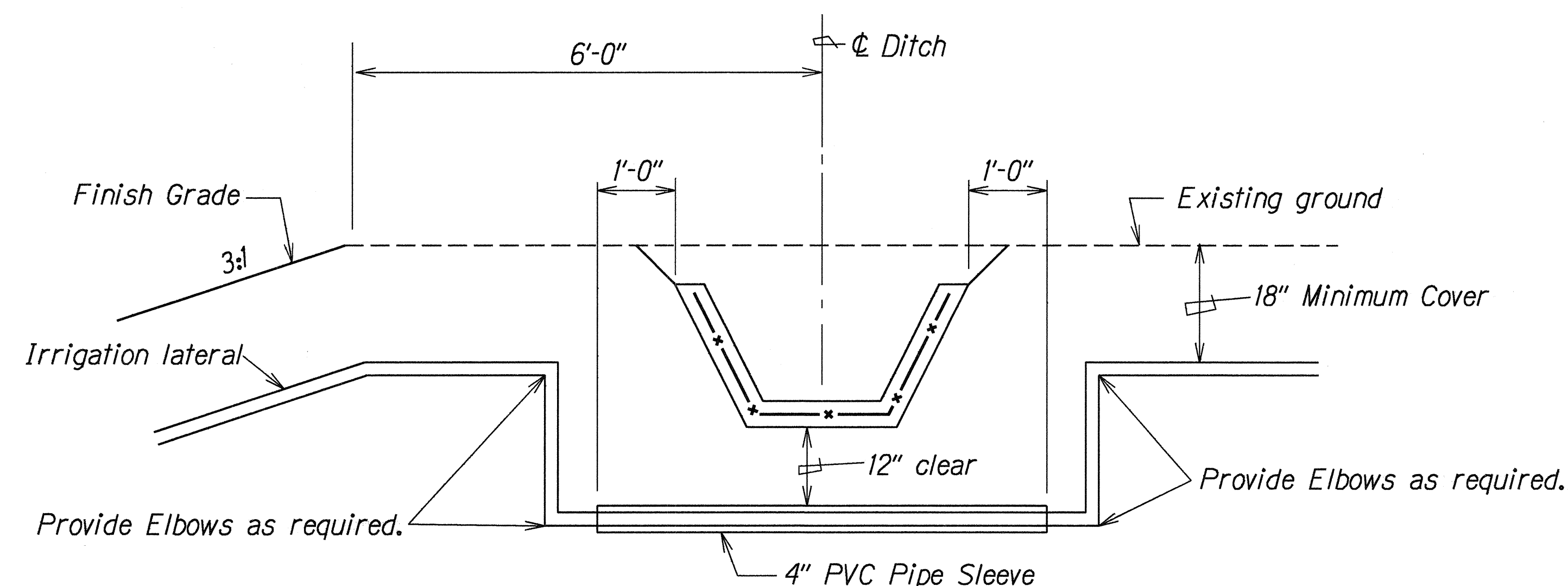
FED. ROAD DIST. NO.	STATE	PROJ. NO.	FISCAL YEAR	SHEET NO.	TOTAL SHEETS
HAWAII	HAW.	7101A-02-98	2000	22	22



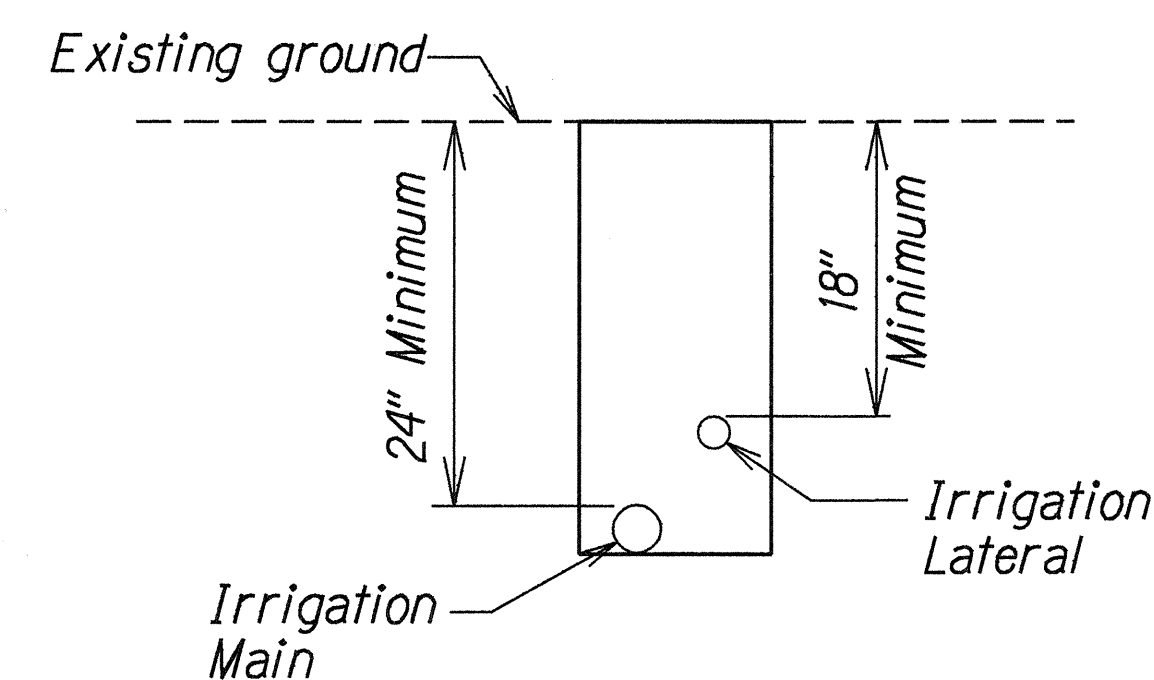
**3" POP-UP HEAD**  
Not to Scale



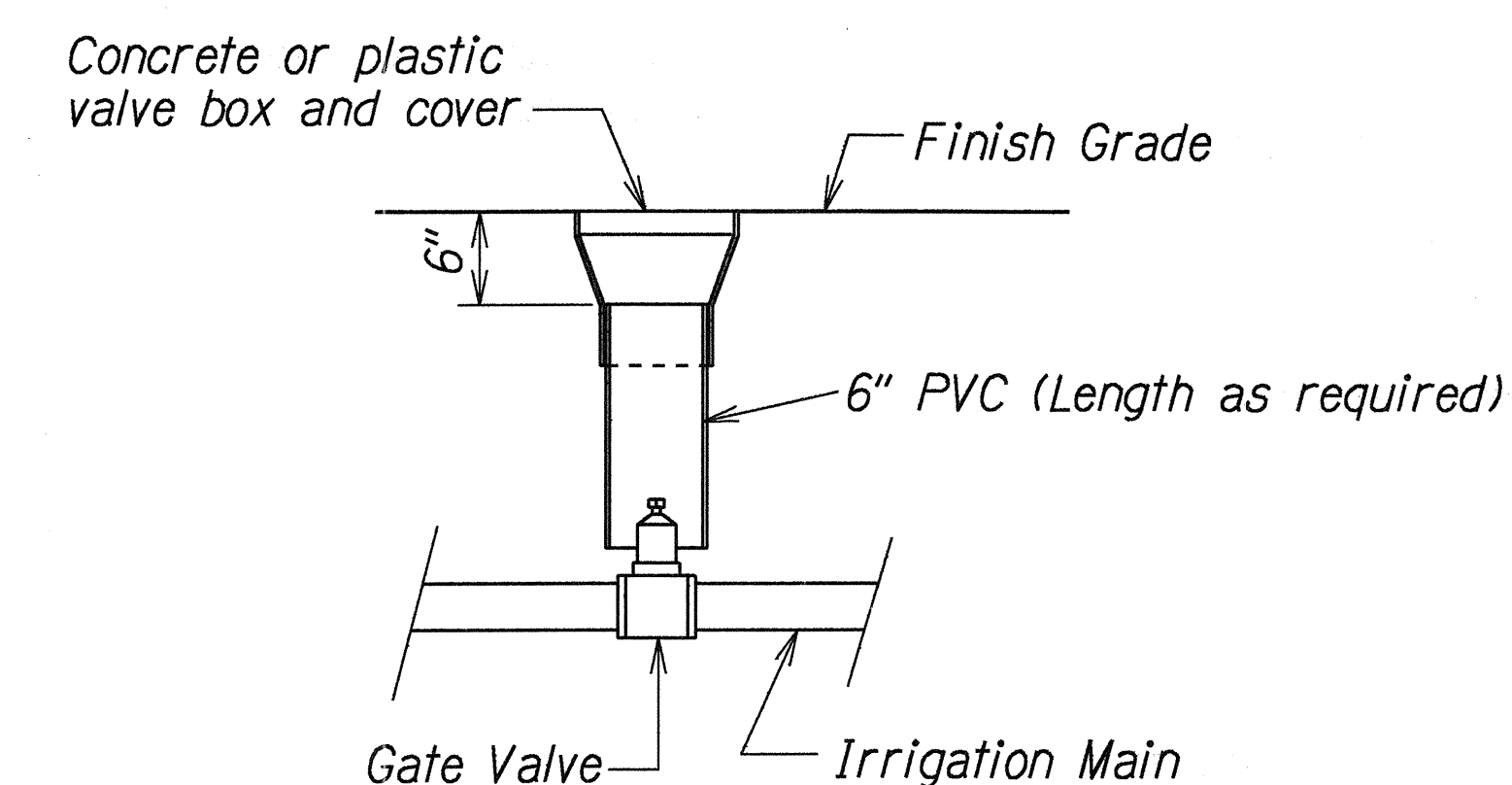
**MANUAL CONTROL VALVE DETAIL**  
Not to Scale



**DETAIL OF DITCH CROSSING**  
Scale:  $\frac{3}{4}$ "=1'-0"



**TRENCH DETAIL**  
Scale: 1"=1'-0"



**GATE VALVE INSTALLATION**  
Scale: 1"=1'-0"

ORIGINAL PLAN	DATE: 1/26/00
DESIGNED BY: L.A.C.	
CHECKED BY: L.A.C.	
INVESTIGATED BY: L.A.C.	
APPROVED BY: L.A.C.	

STATE OF HAWAII  
DEPARTMENT OF TRANSPORTATION  
HIGHWAYS DIVISION

**IRRIGATION DETAILS**

FARRINGTON HIGHWAY RETAINING WALL  
ABOVE WAIPAHU HIGH SCHOOL  
ATHLETIC FIELD  
PROJECT NO. 7101A-02-98

Scale: As Noted Date: Jan, 2000

SHEET No. L2 OF 2 SHEETS