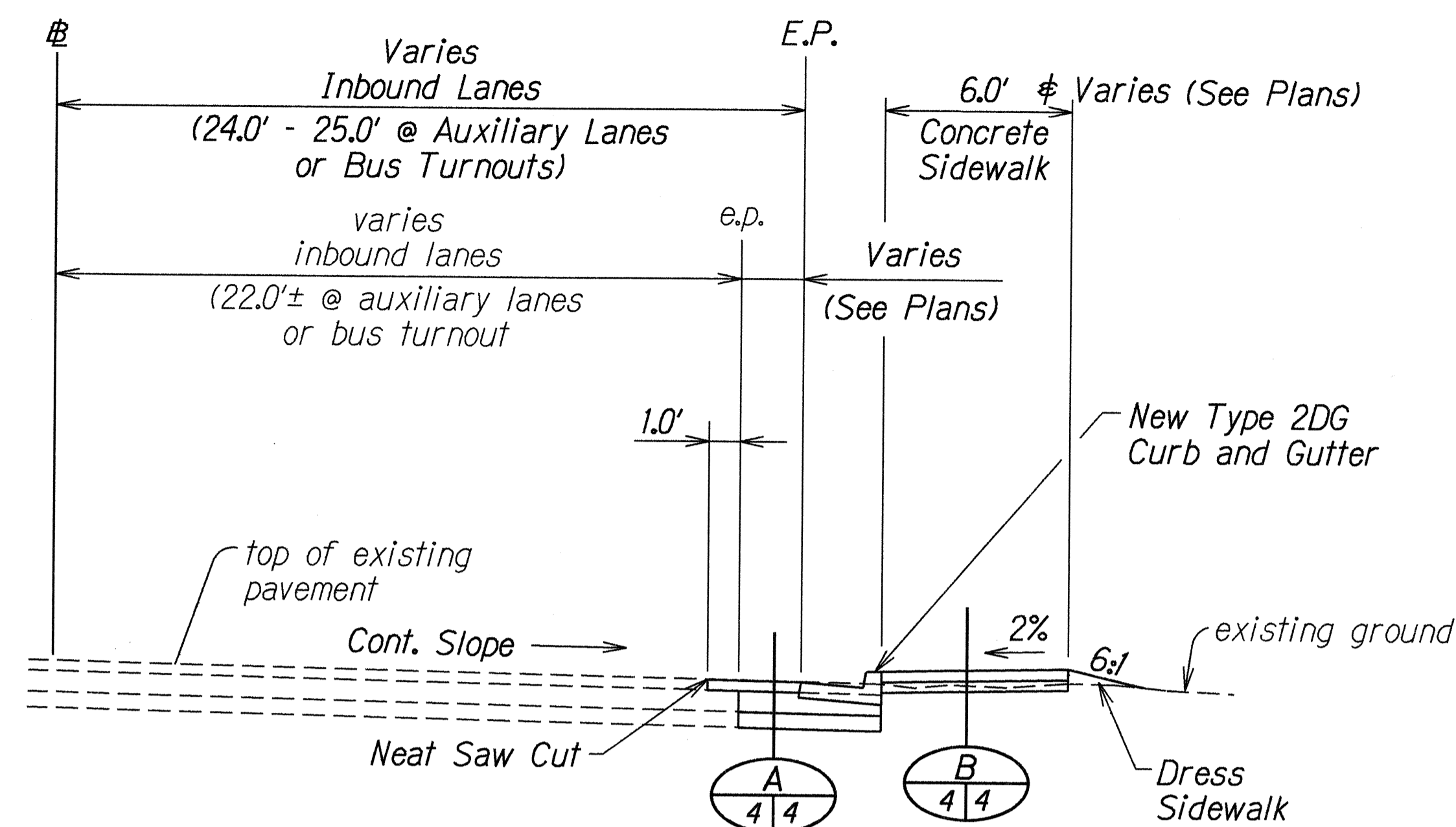
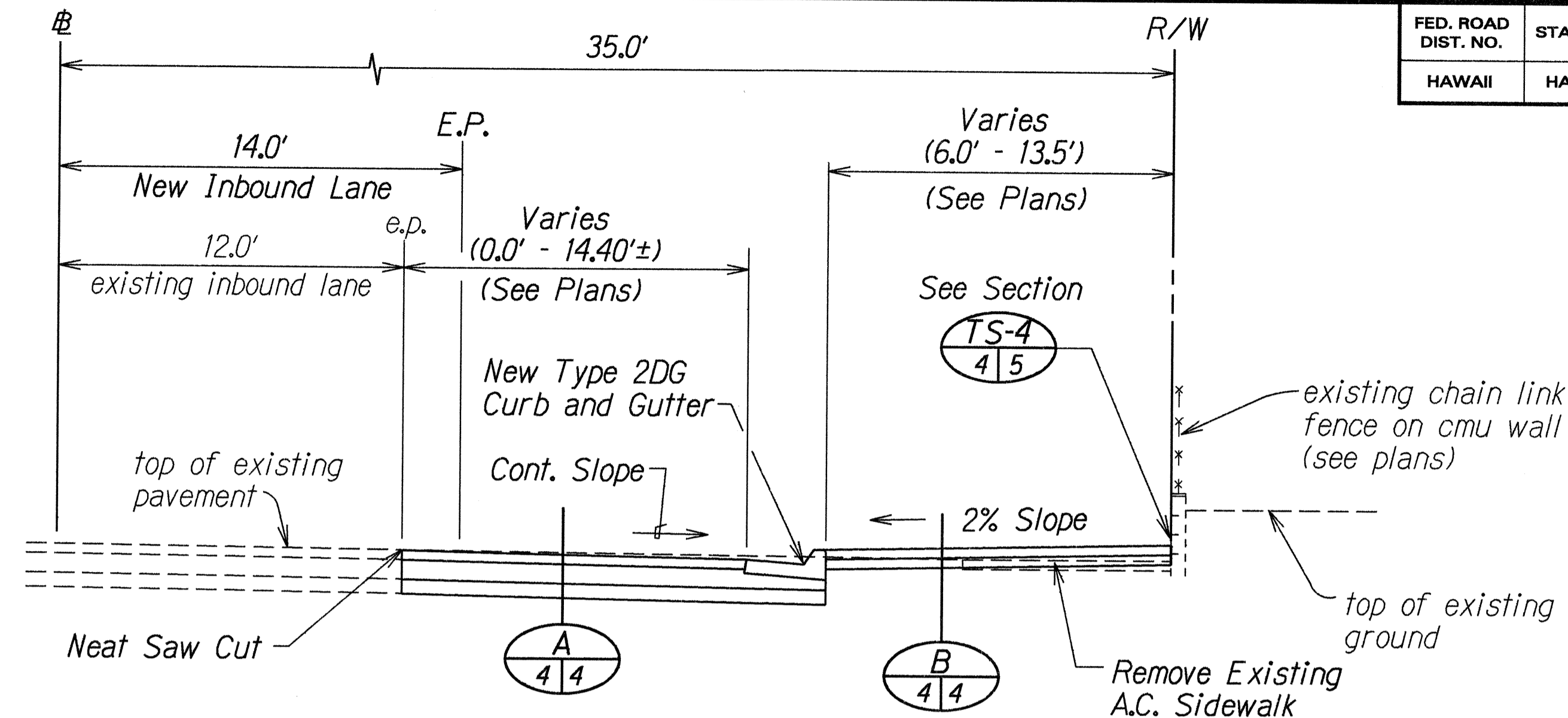


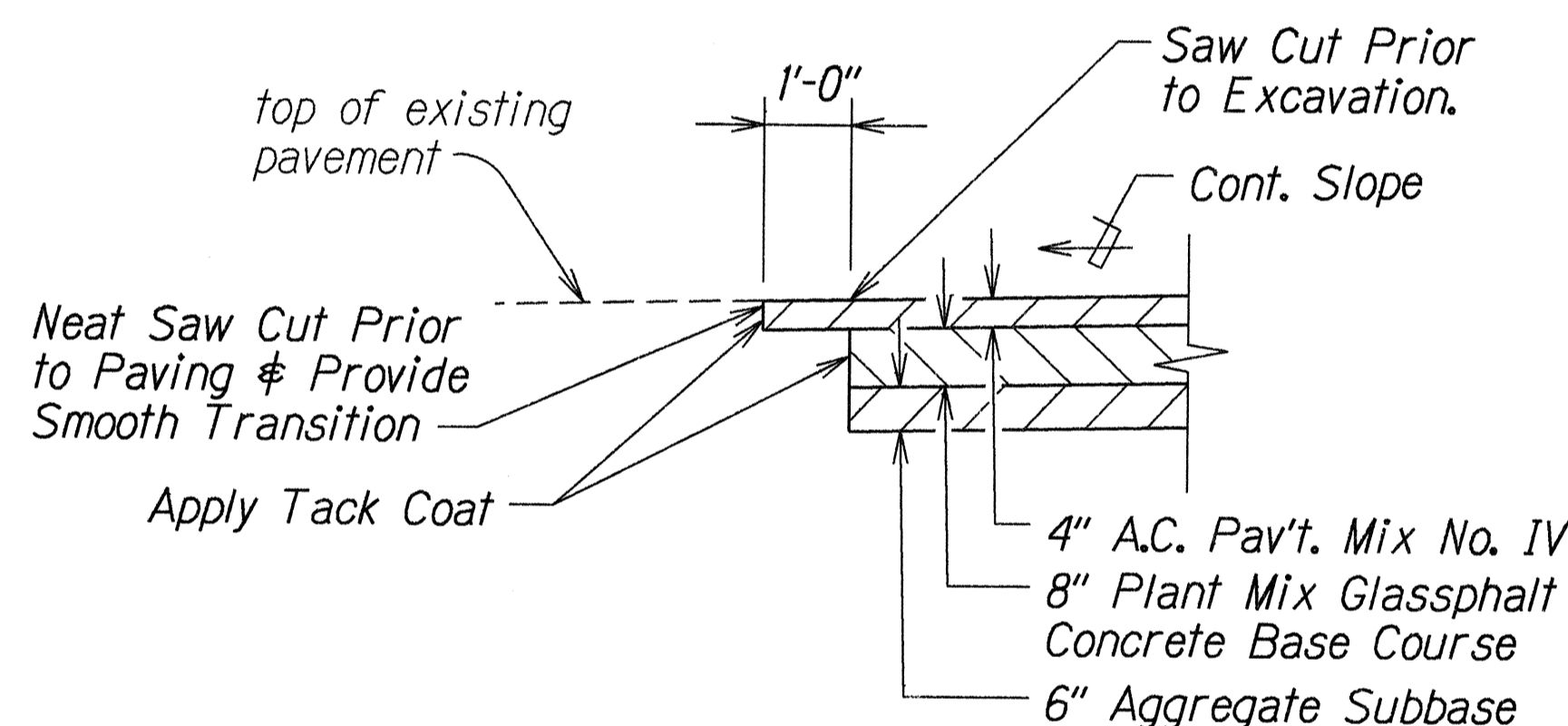
FED. ROAD DIST. NO.	STATE	PROJ. NO.	FISCAL YEAR	SHEET NO.	TOTAL SHEETS
HAWAII	HAW.	7101A-02-97	1998	ADD.4	102



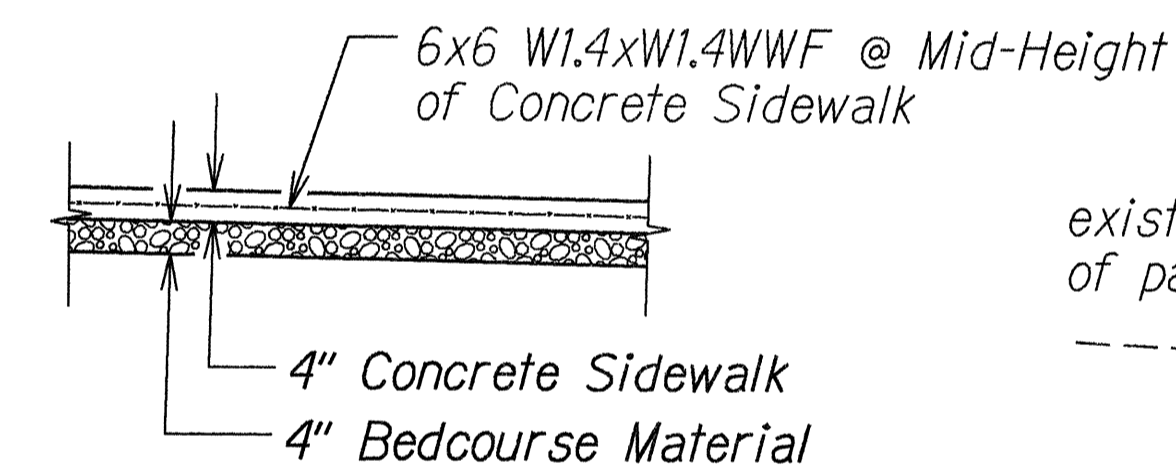
TYPICAL SECTION TS-1
Scale: 1/4"=1'-0"
19-22 | 4



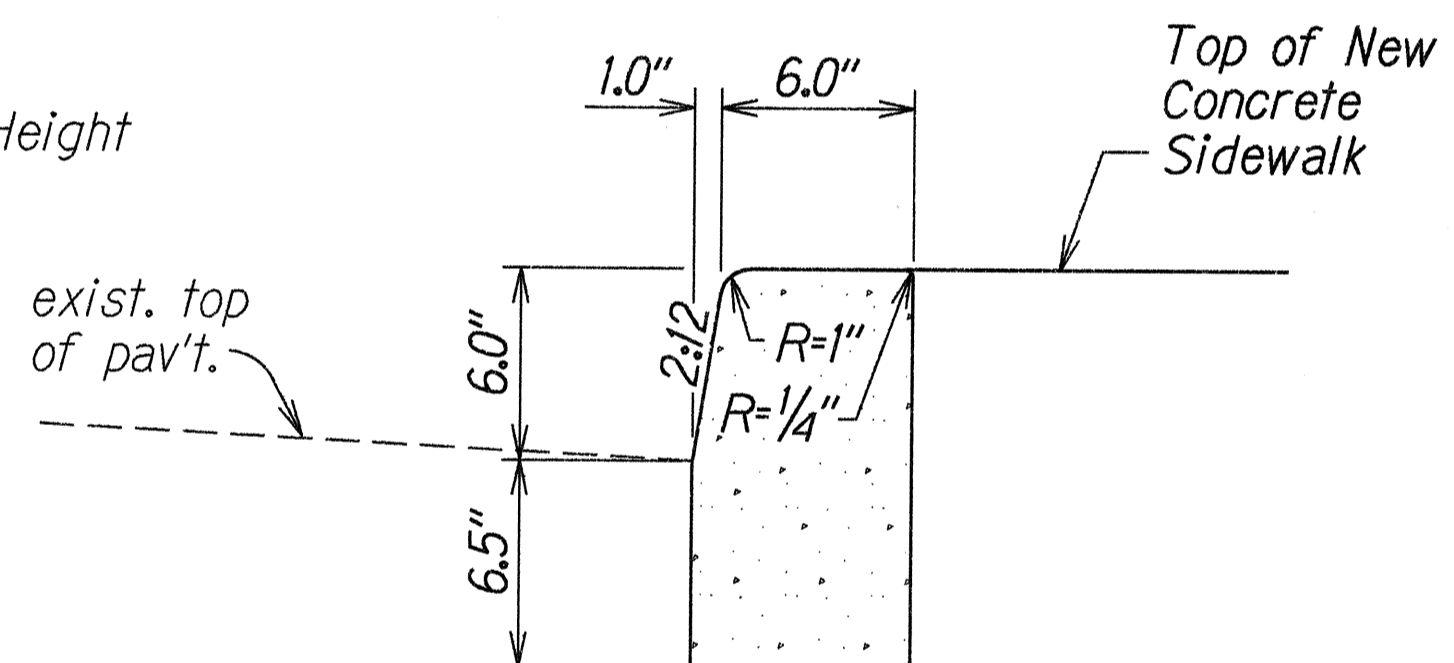
PAVEMENT WIDENING AND NEW SIDEWALK SECTION TS-3
Scale: 1/4"=1'-0"
20 | 4



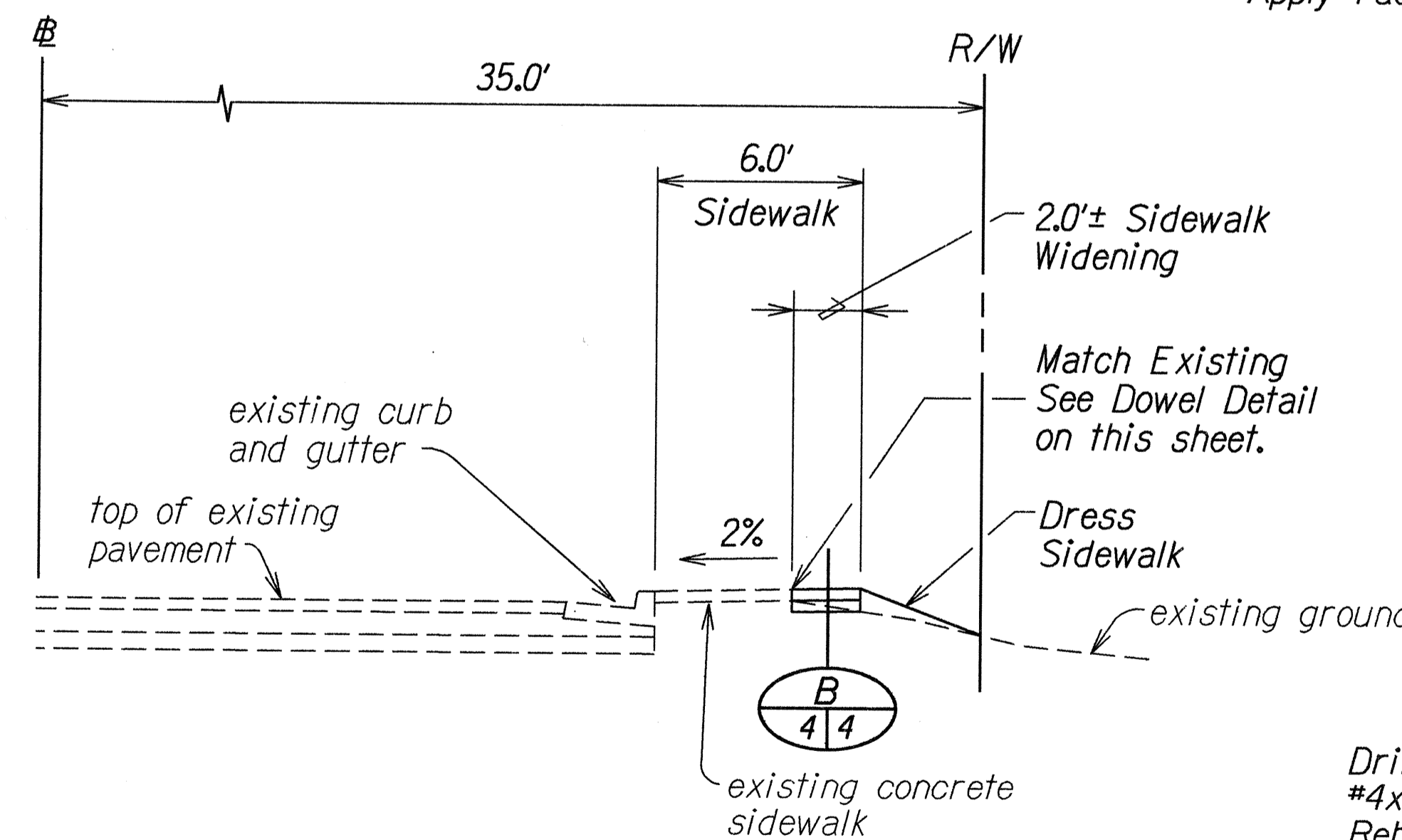
DETAIL A
Scale: 1"=1'-0"
4-9 | 4



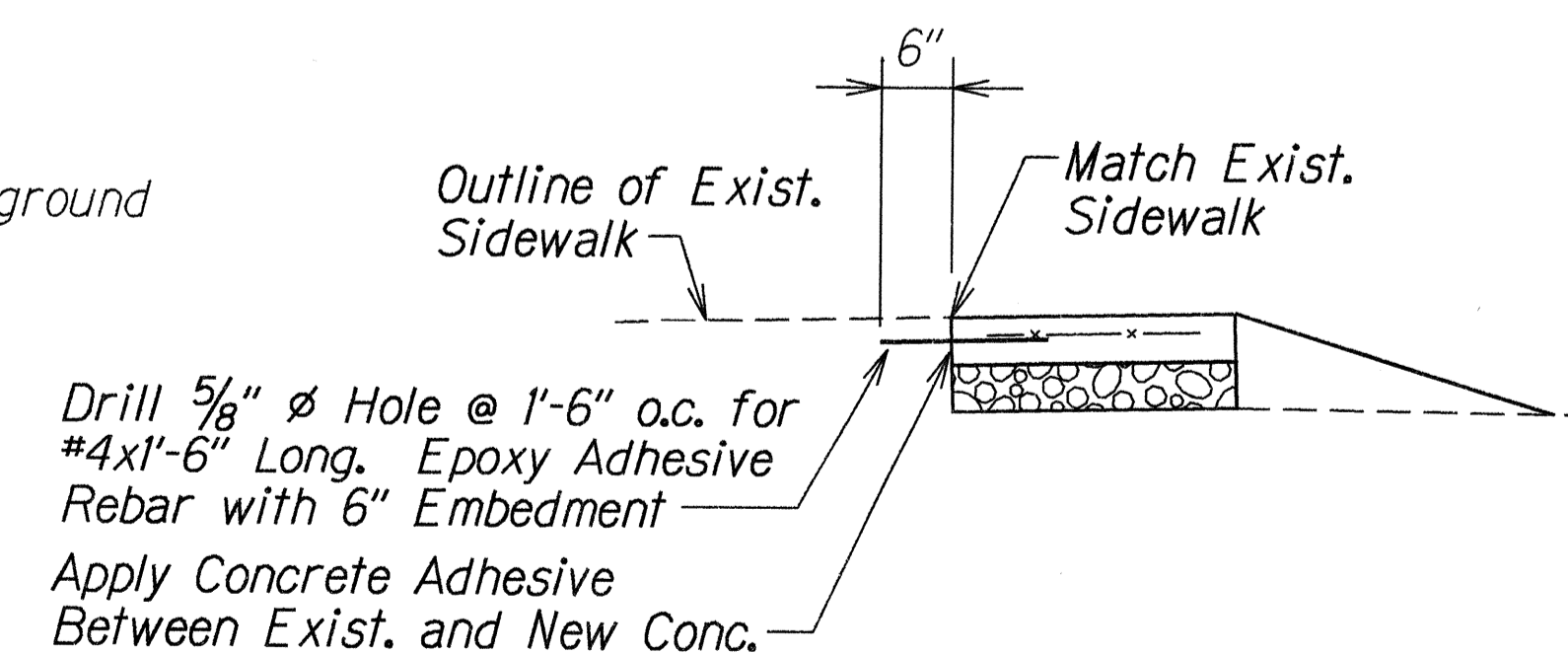
DETAIL B
Scale: 1"=1'-0"
4-6,8,9 | 4



CURB, MODIFIED TYPE "2D" DETAIL
Scale: 2"=1'-0"



SIDEWALK WIDENING SECTION TS-2
STA. 73+51± TO # STA. 76+87±
Scale: 1/4"=1'-0"
19 | 4



Note: Installation of dowels, including drilling, epoxy and concrete adhesive, shall be incidental to Sidewalk.

DOWEL DETAIL
Scale: 3/4"=1'-0"

6-17-98 Added Dowel Detail and Revise Detail "A".

DATE REVISION

STATE OF HAWAII
DEPARTMENT OF TRANSPORTATION
HIGHWAYS DIVISION

TYPICAL SECTIONS
FARRINGTON HIGHWAY SIDEWALKS
Leole Street to Awanui Street and
Leoku Street to Palwa Street
Project No. 7101A-02-97

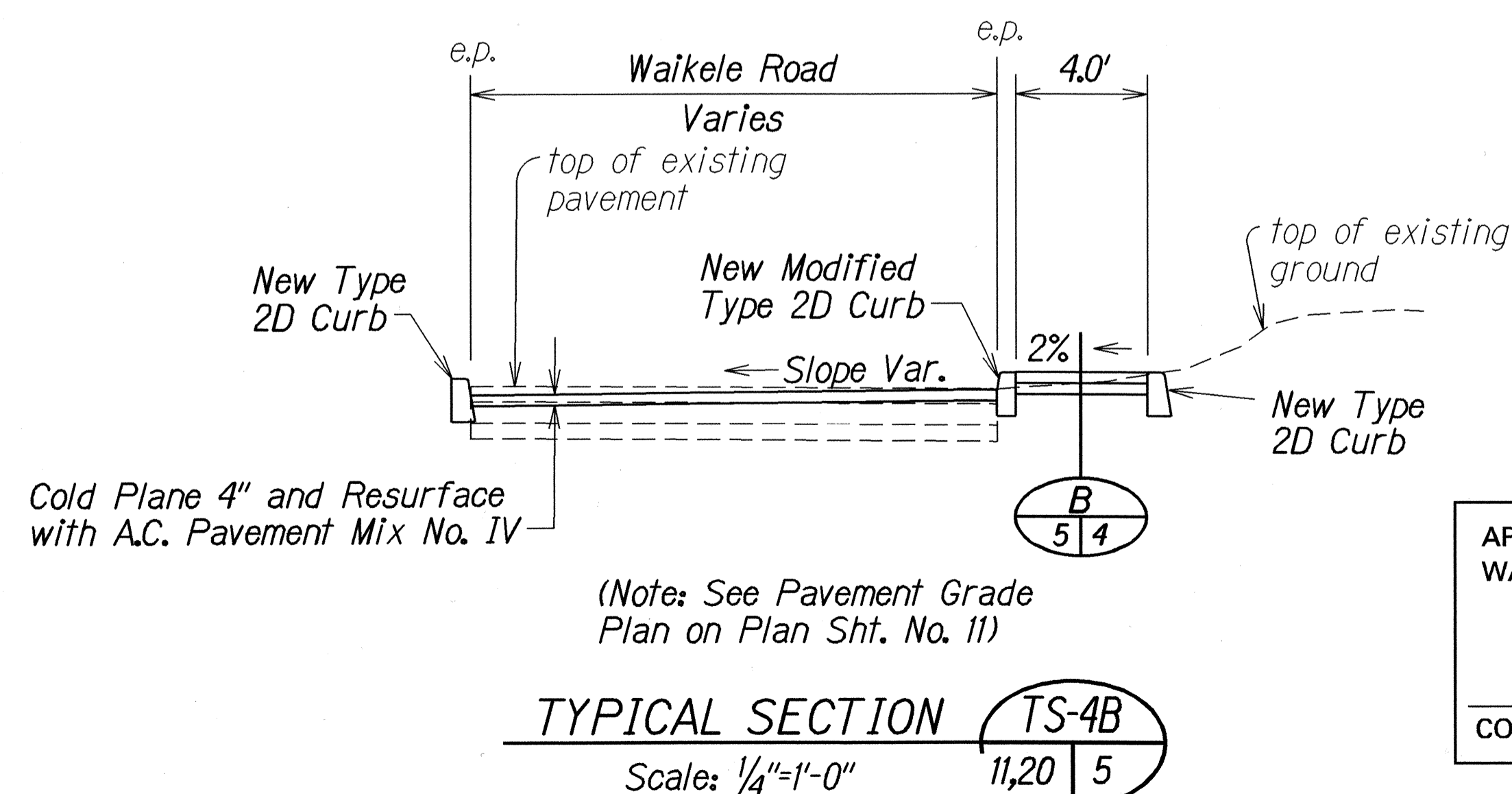
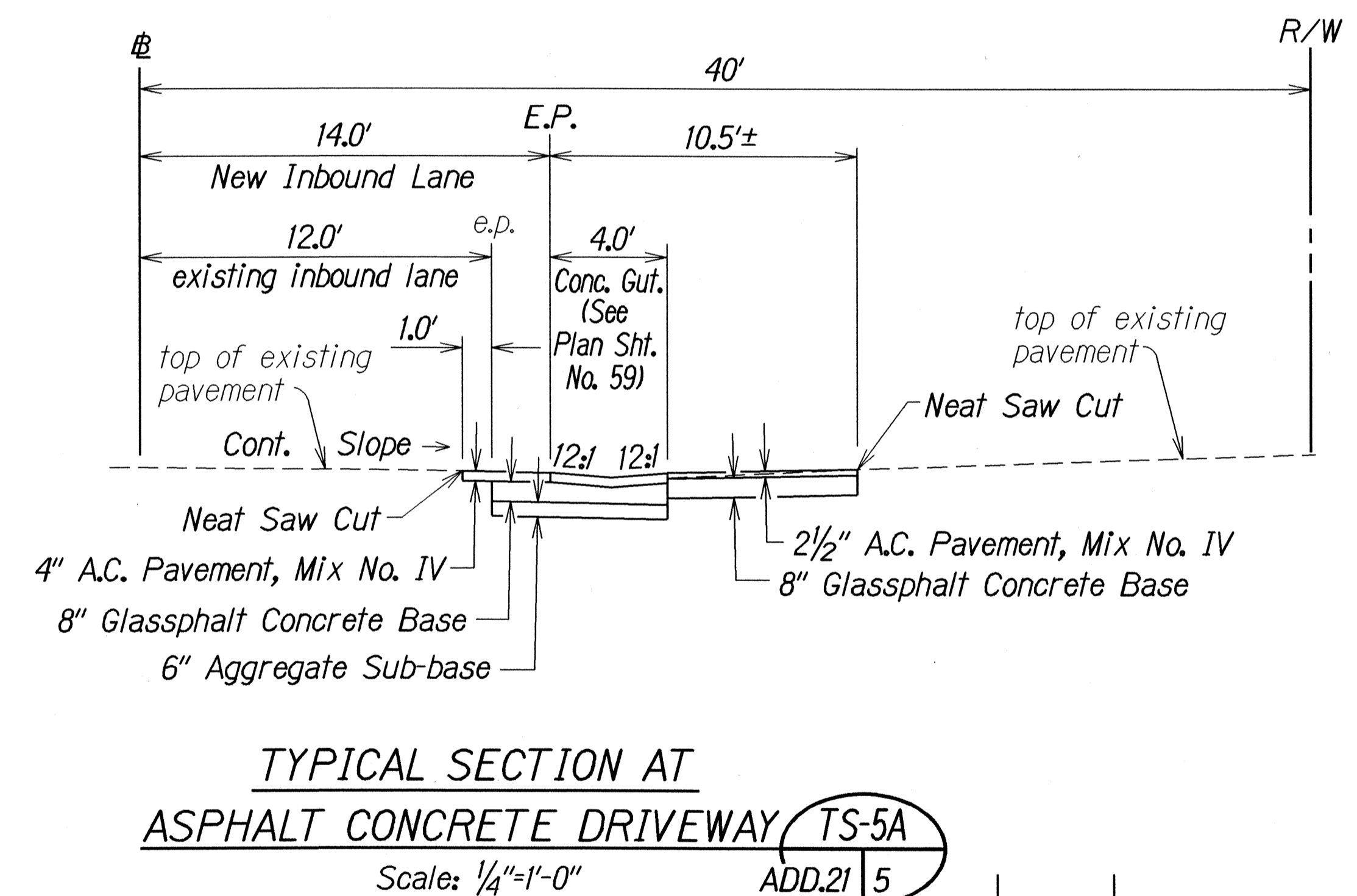
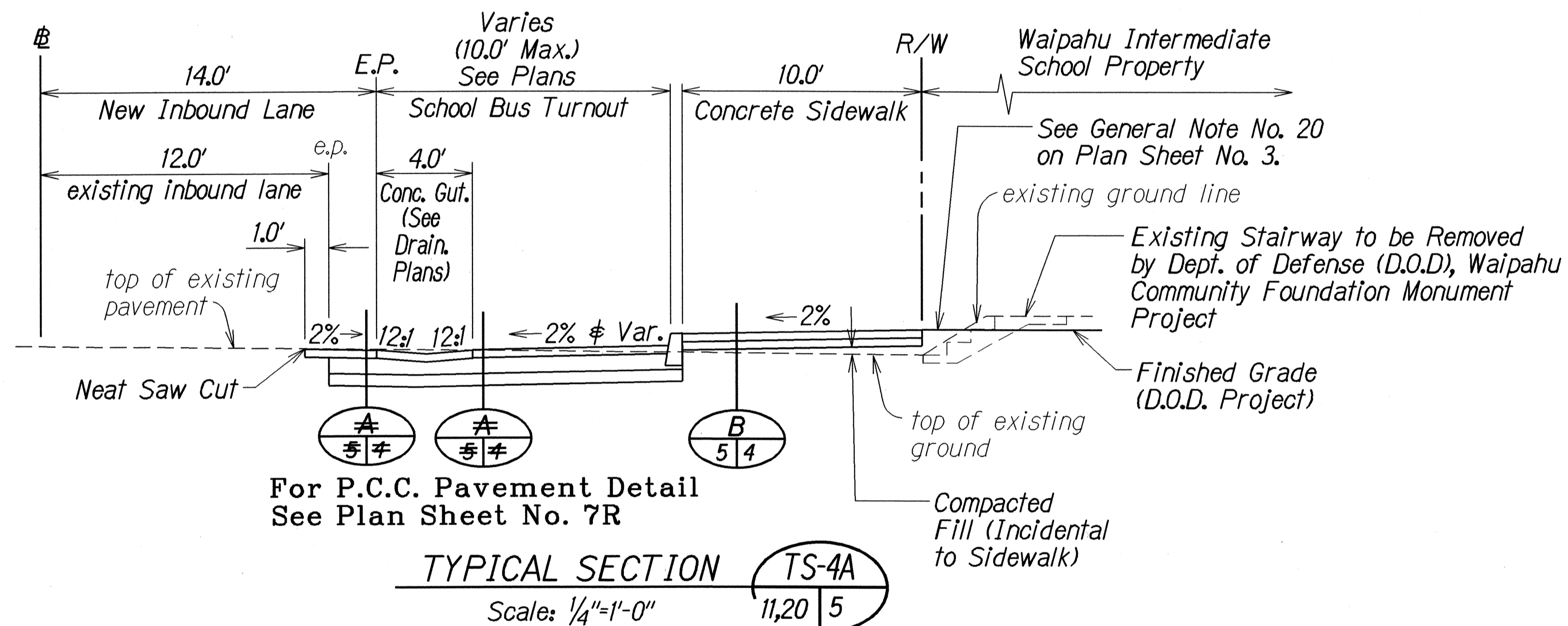
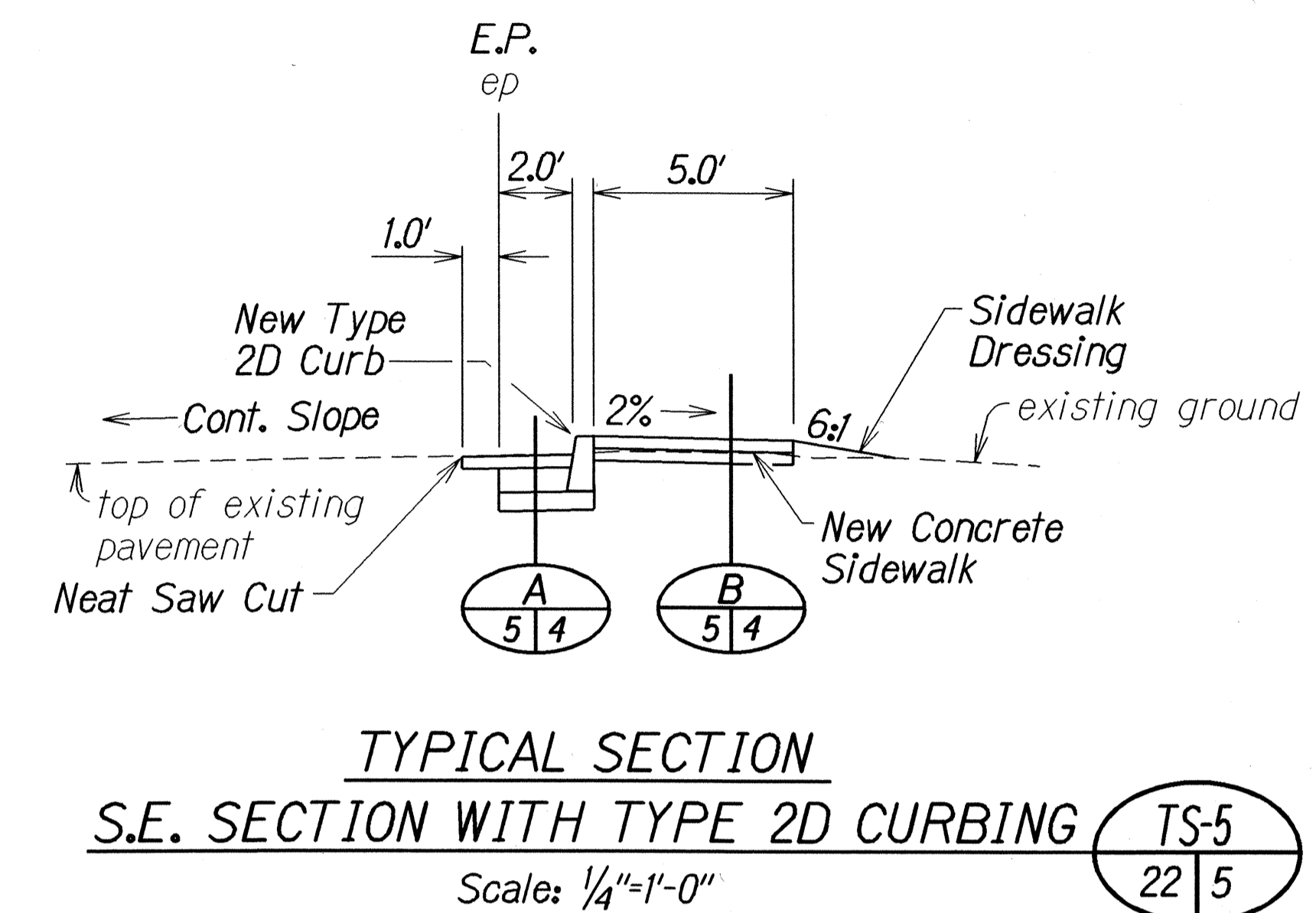
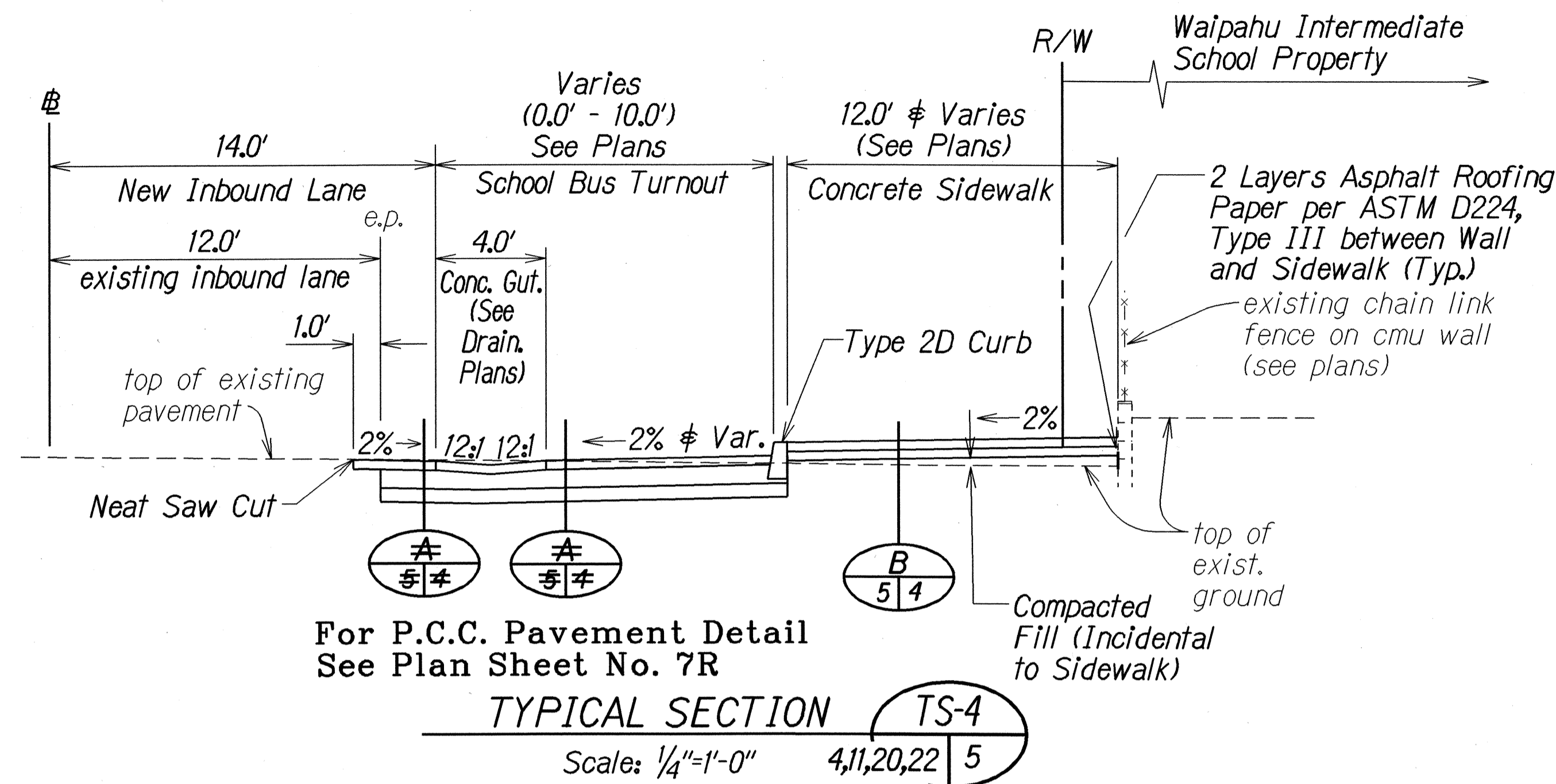
Scale: As Noted Date: May 1998

SHEET No. 1 OF 6 SHEETS

ADD.4

ORIGINAL PLAN	DATE	5-7-98
SURVEY PLOTTED BY	DATE	5-7-98
DESIGNED BY	DATE	5-7-98
QUANTITIES BY	DATE	5-7-98
CHECKED BY	DATE	5-7-98

FED. ROAD DIST. NO.	STATE	PROJ. NO.	FISCAL YEAR	SHEET NO.	TOTAL SHEETS
HAWAII	HAW.	7101A-02-97	1998	ADD.5	102



APPROVED FOR CONSTRUCTION WITHIN
WAIPAHU INTERMEDIATE SCHOOL:

Corrine Fujieda
CORRINE FUJIEDA, VICE PRINCIPAL

DATE

LEGEND FOR AS-BUILT POSTINGS	
	Squiggly line for as-built deletion
	Double line for as-built deletion
	Text for as-built posting

DATE	REVISION
5-04-99	Revised E.P. location for TS-5.
6-10-98	Added Typical Section at Asphalt Concrete Driveway, TS-5A.

STATE OF HAWAII
DEPARTMENT OF TRANSPORTATION
HIGHWAYS DIVISION

TYPICAL SECTIONS

FARRINGTON HIGHWAY SIDEWALKS

Leole Street to Awanui Street and

Leoku Street to Palwa Street

Project No. 7101A-02-97

Scale: As Noted Date: May 1998

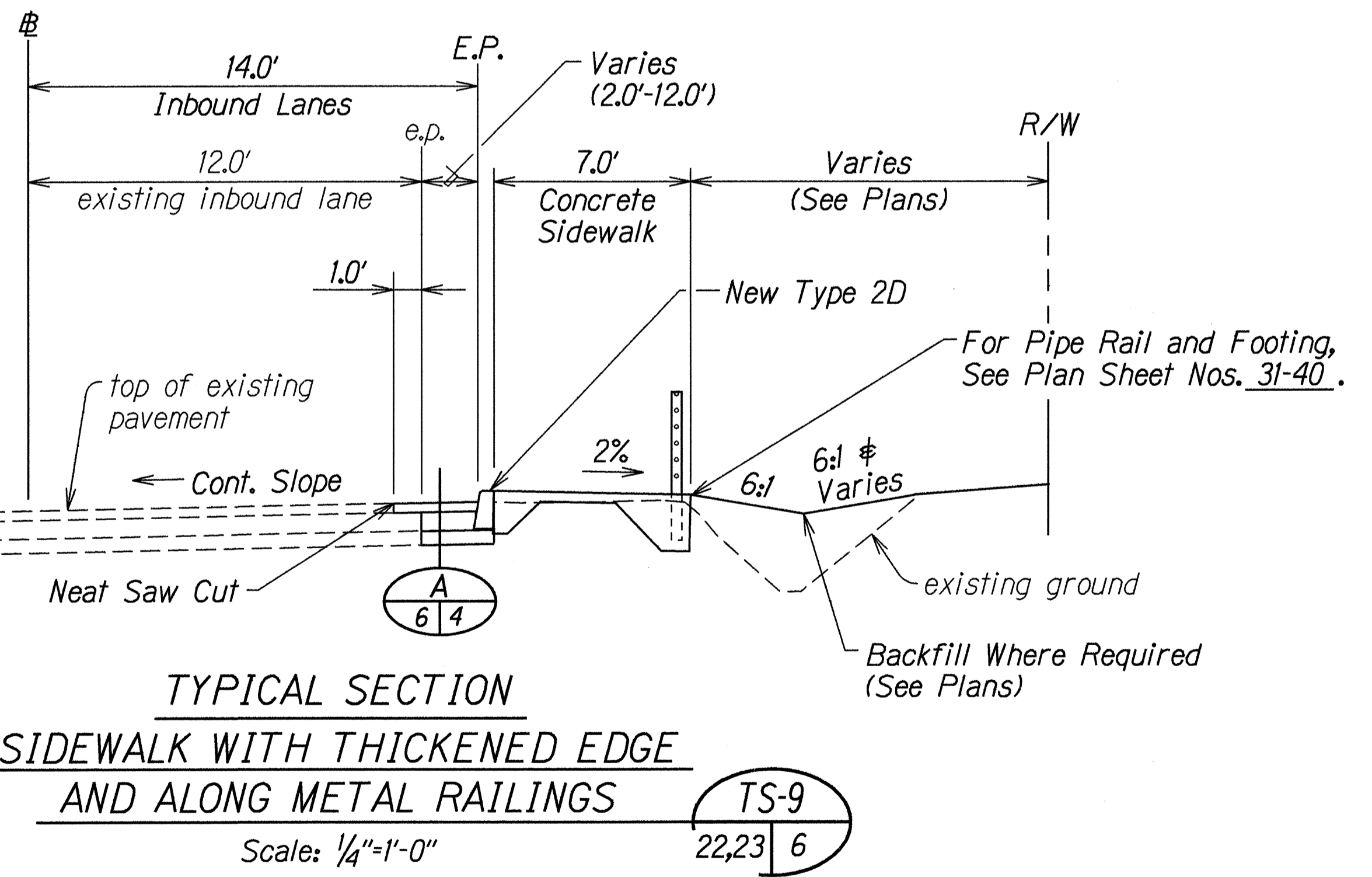
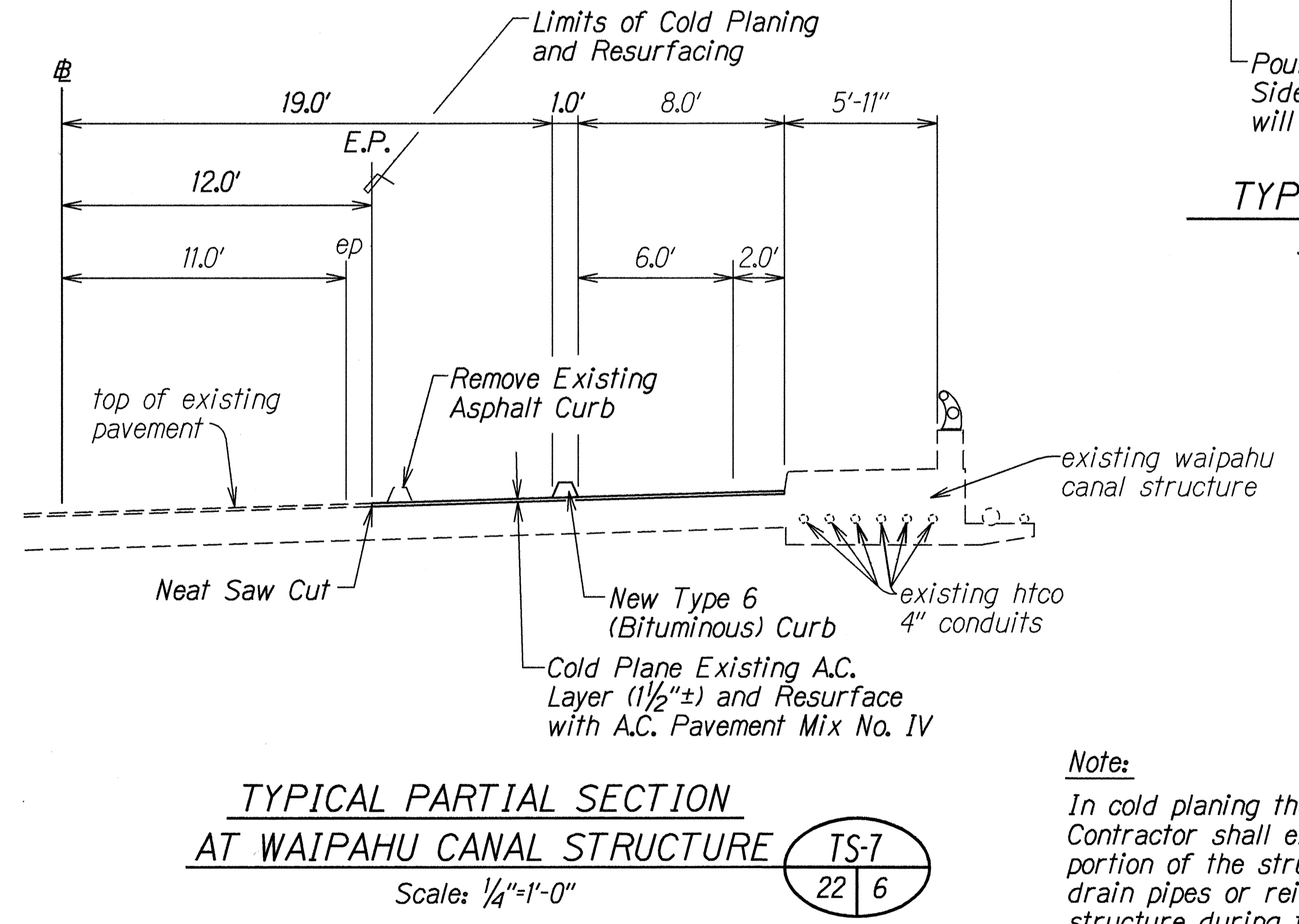
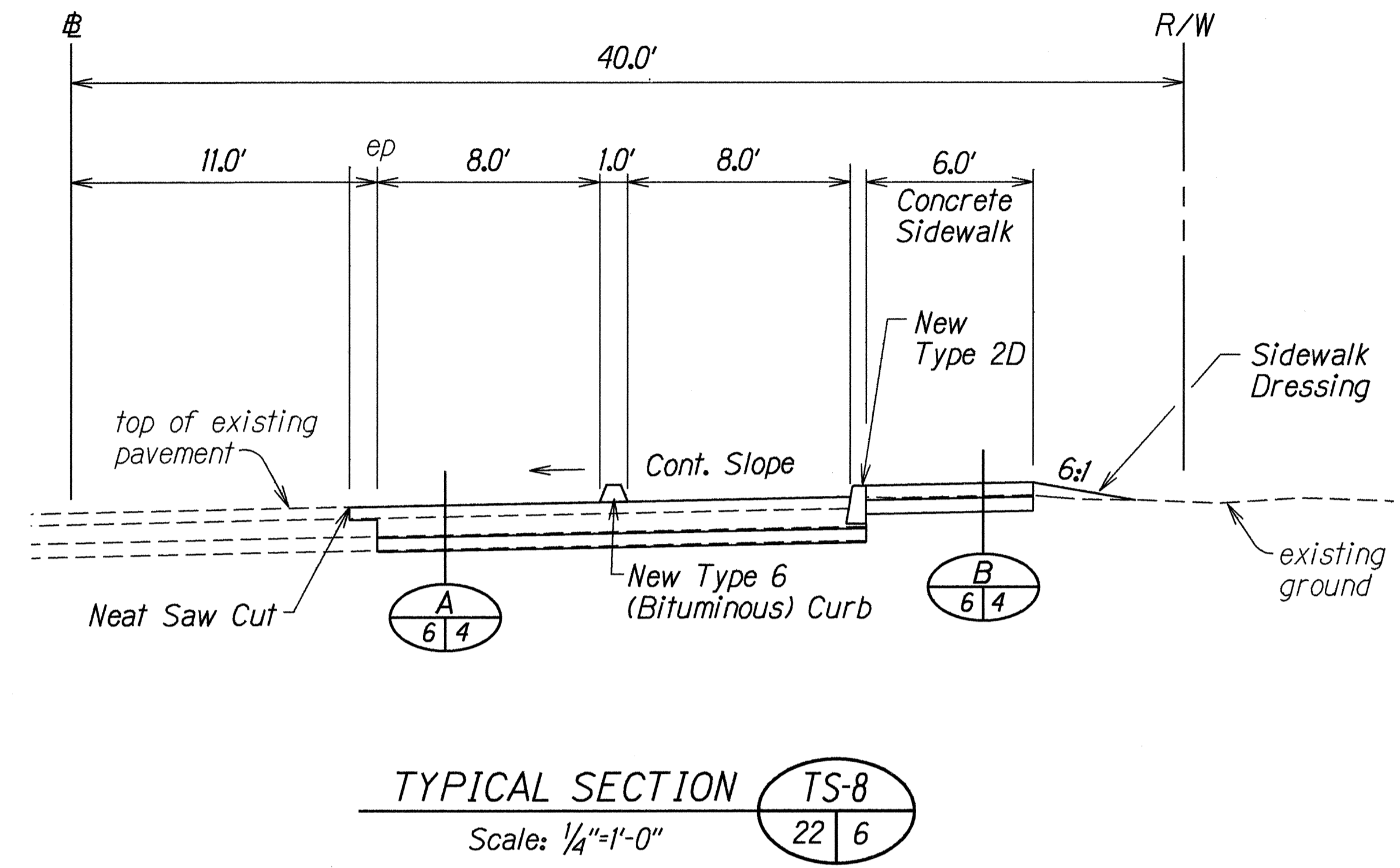
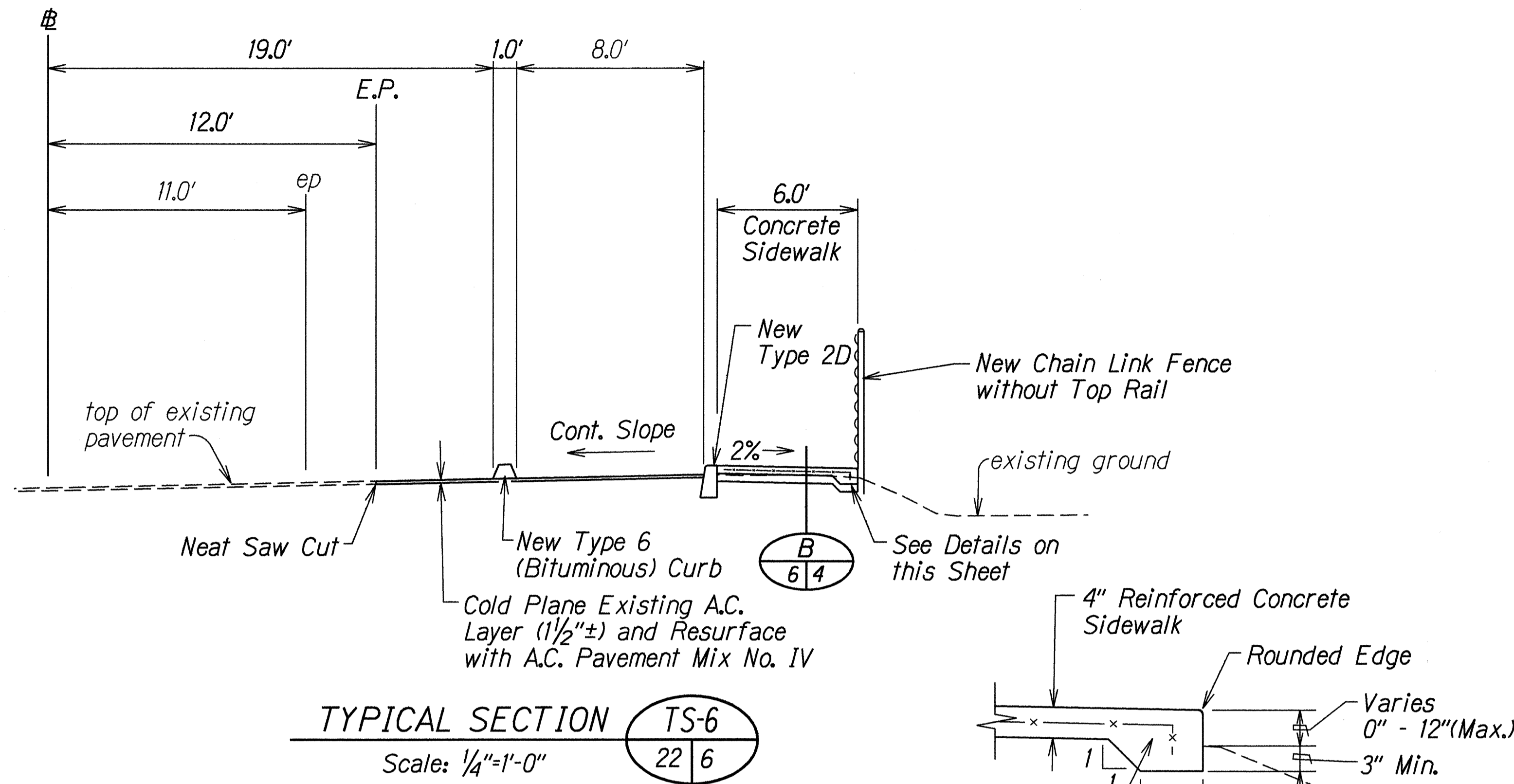
SHEET No. 2 OF 6 SHEETS

"AS-BUILT"

C.O. ADD. 5

SURVEY PLOTTED BY	DATE
DESIGNED BY	5-04-99
CHECKED BY	
NOTED BY	
QUANTITIES BY	
ORIGINAL PLAN	

FED. ROAD DIST. NO.	STATE	PROJ. NO.	FISCAL YEAR	SHEET NO.	TOTAL SHEETS
HAWAII	HAW.	7101A-02-97	1998	6	102



Note:
In cold planing the pavement over the structure, the Contractor shall exercise care not to damage any portion of the structure, especially the slab, joints, drain pipes or reinforcement. Any damage to the structure during the cold planing operations shall be repaired by the Contractor at his own expense. Repair work shall be as directed by the Engineer. The Contractor shall verify the existing pavement thickness by hand digging at various locations. this work shall be considered incidental to cold planing and will not be paid for separately.

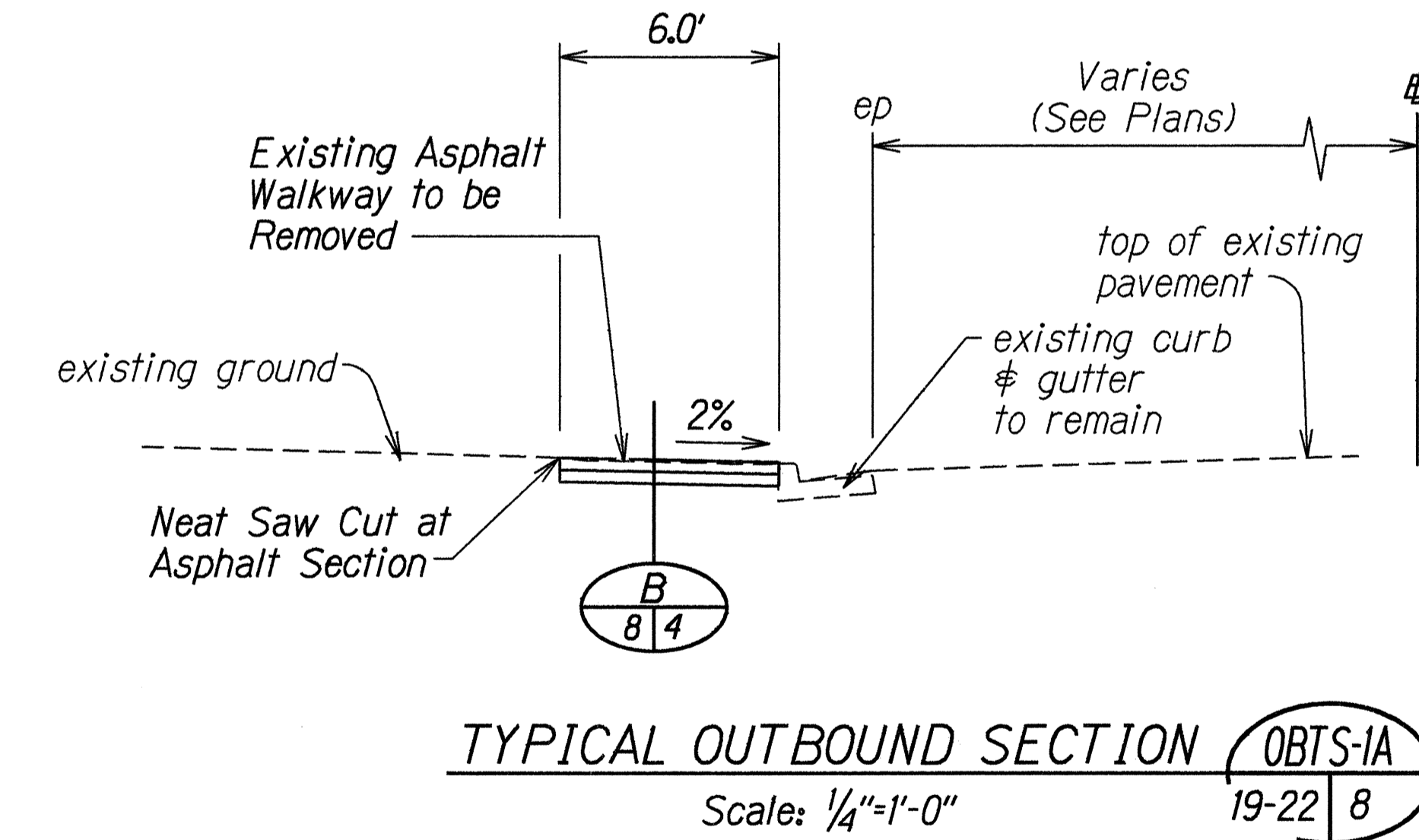
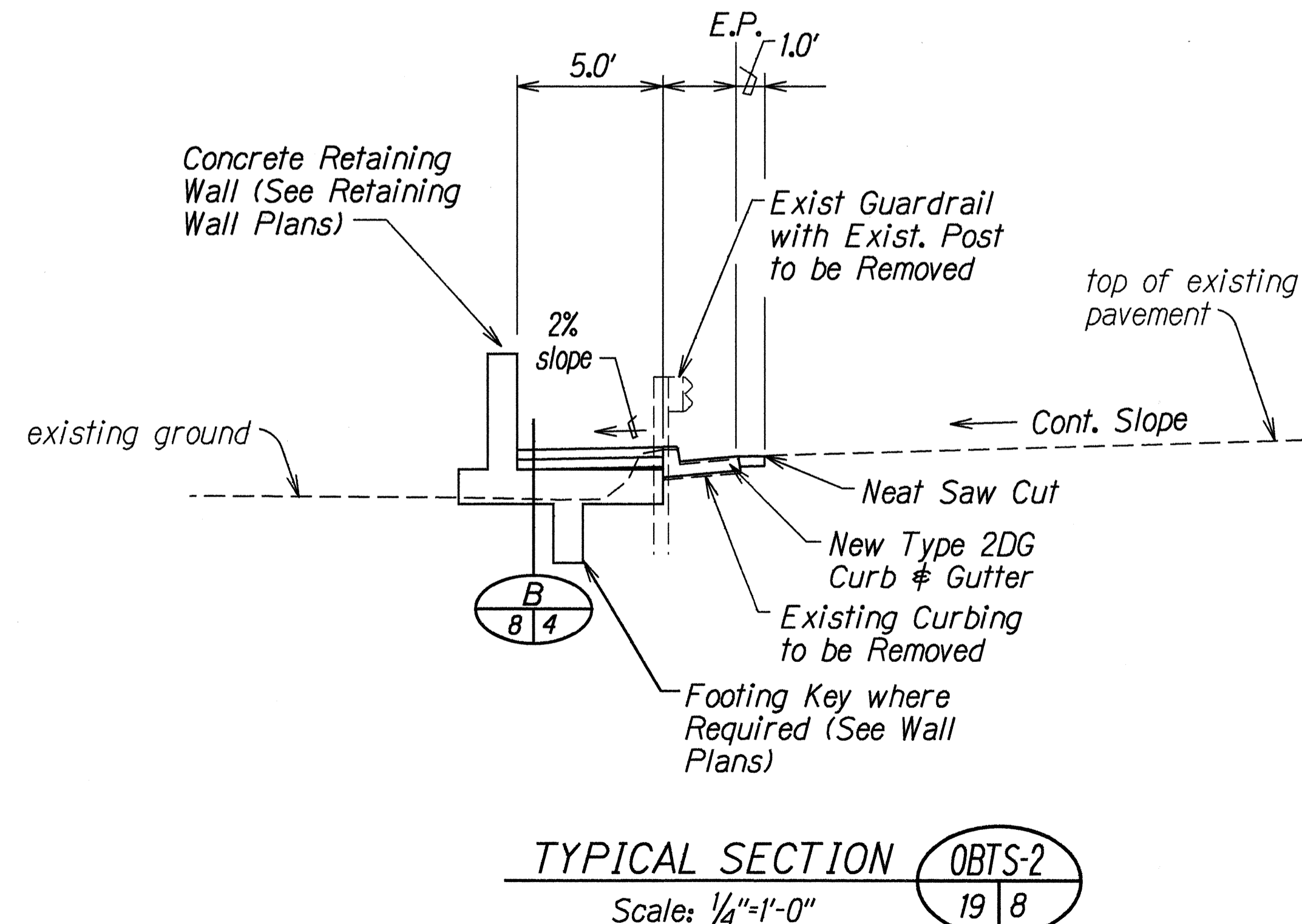
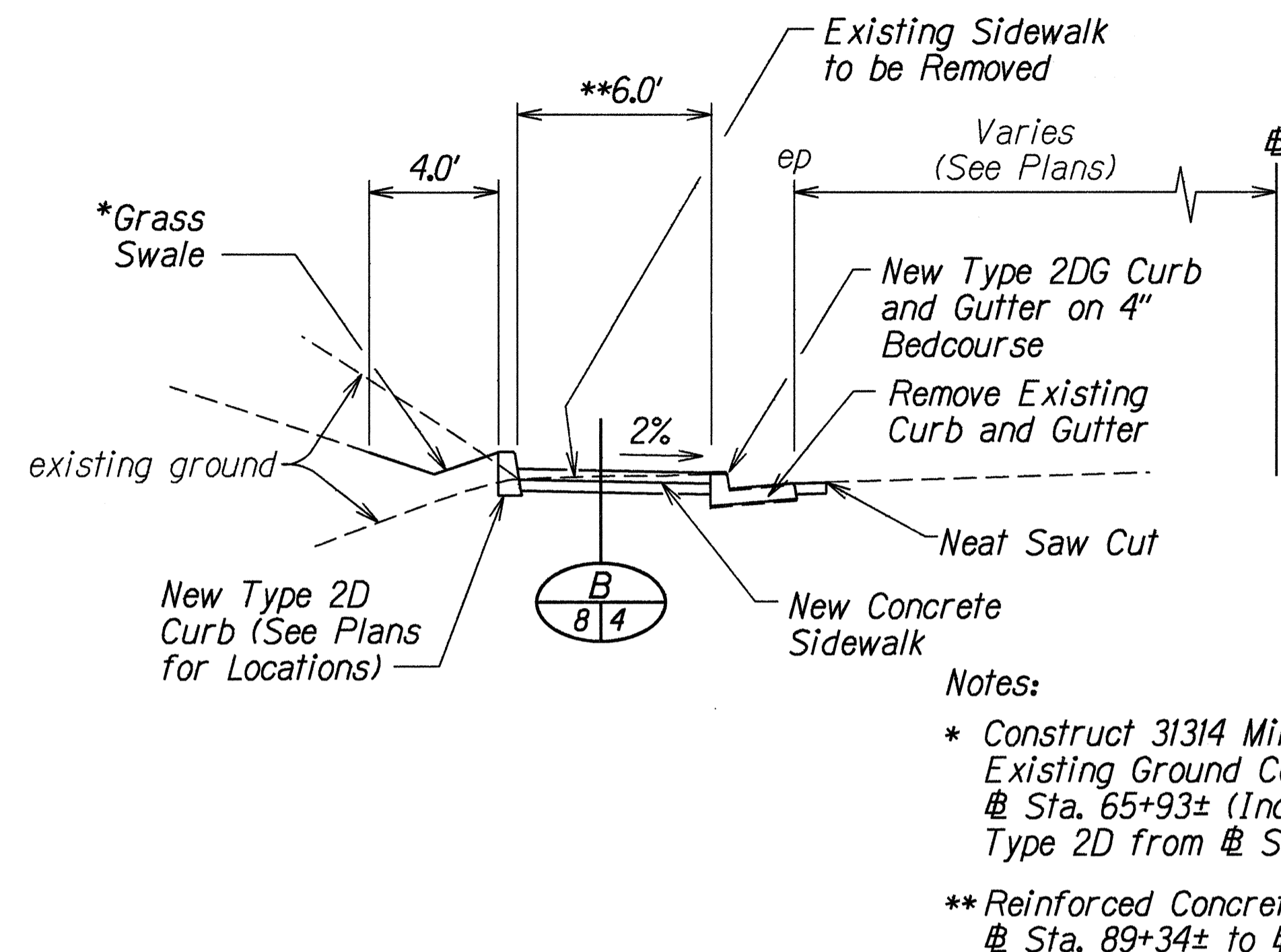
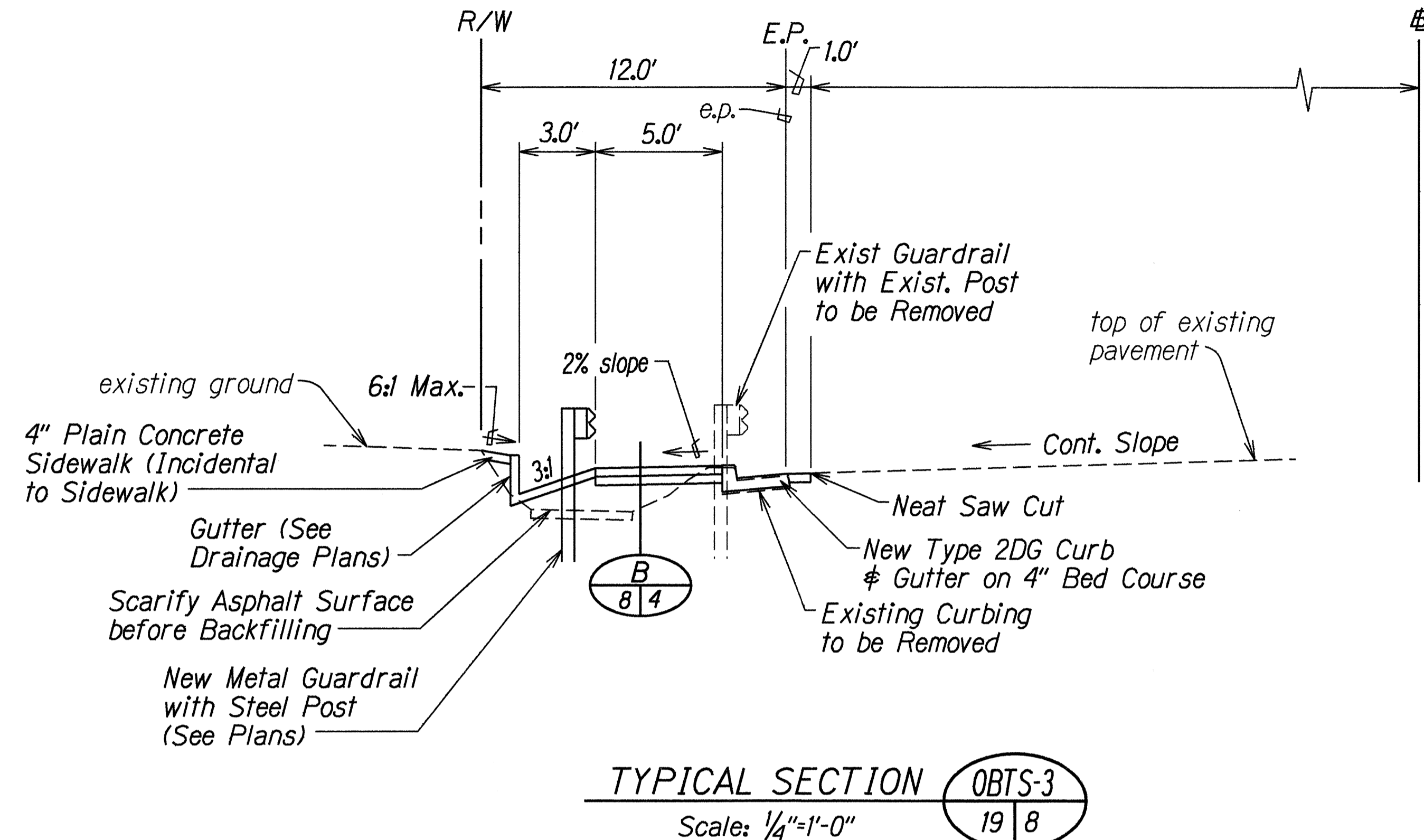
DATE	REVISION
7/30/98	Added Plan Sheet No. Reference for Typical Section TS-9 per Addendum No. 1.

STATE OF HAWAII
DEPARTMENT OF TRANSPORTATION
HIGHWAYS DIVISION

TYPICAL SECTIONS
FARRINGTON HIGHWAY SIDEWALKS
Leole Street to Awanui Street and
Leoku Street to Paiva Street
Project No. 7101A-02-97
Scale: As Noted Date: May 1998
SHEET No. 3 OF 6 SHEETS

SURVEY PLOTTED BY	DATE
DRAWN BY	5-1-98
TRACED BY	
CHECKED BY	
NOTES	
QUANTITIES BY	
CHECKED BY	
DATE	

FED. ROAD DIST. NO.	STATE	PROJ. NO.	FISCAL YEAR	SHEET NO.	TOTAL SHEETS
HAWAII	HAW.	7101A-02-97	1998	8	102



SURVEY PLOTTED BY	DATE
DESIGNED BY	5-03-99
TRACED BY	
NOTED BY	
QUANTITIES BY	
CHECKED BY	

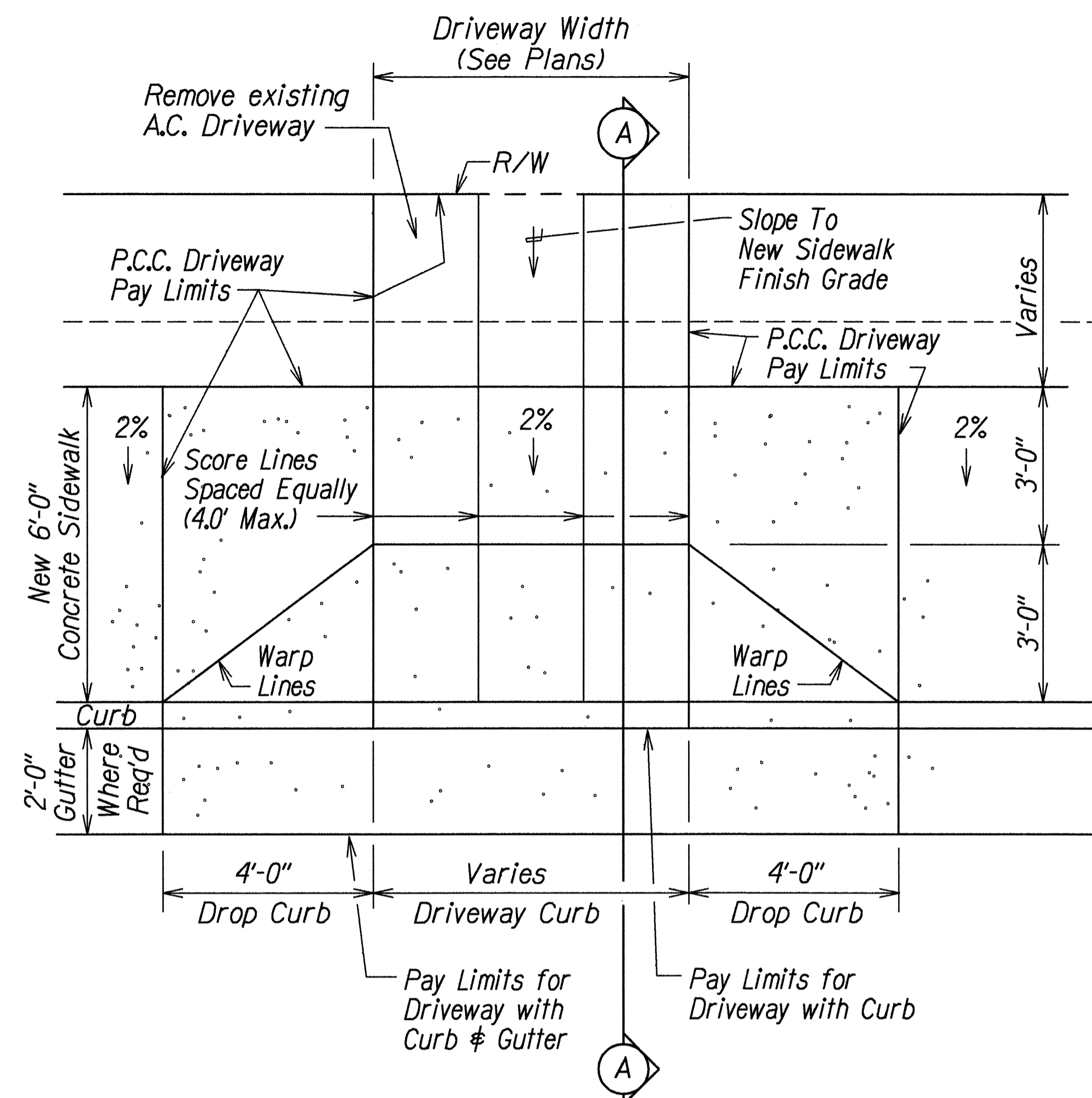
5-03-99	Revised * note and added ** note for OBTS-1.
DATE	REVISION

STATE OF HAWAII
DEPARTMENT OF TRANSPORTATION
HIGHWAYS DIVISION

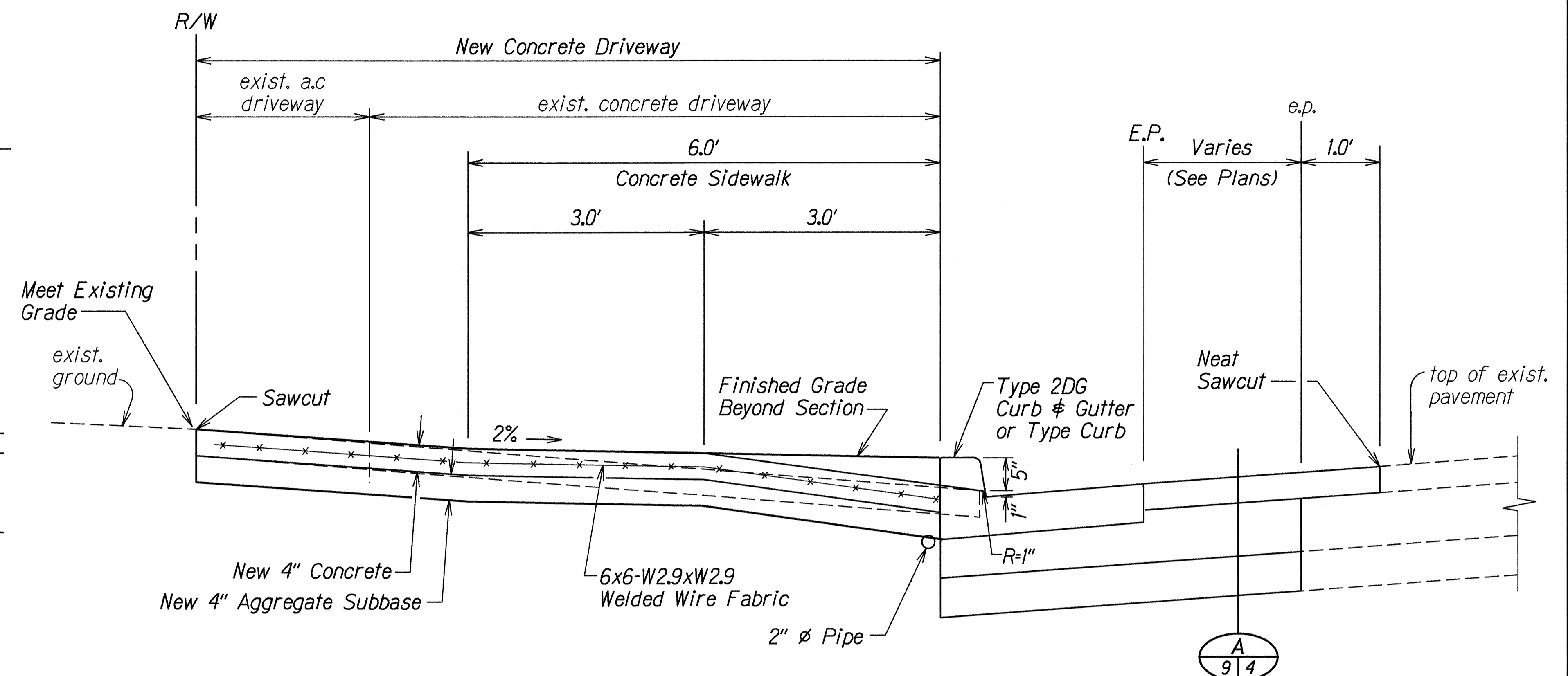
TYPICAL SECTIONS
FARRINGTON HIGHWAY SIDEWALKS
Leole Street to Awanui Street and
Leoku Street to Paiwa Street
Project No. 7101A-02-97
Scale: As Noted Date: May 1998

SHEET No. 5 OF 6 SHEETS

FED. ROAD DIST. NO.	STATE	PROJ. NO.	FISCAL YEAR	SHEET NO.	TOTAL SHEETS
HAWAII	HAW.	7101A-02-97	1998	9	102



PLAN
Scale: 1/2" = 1'-0"

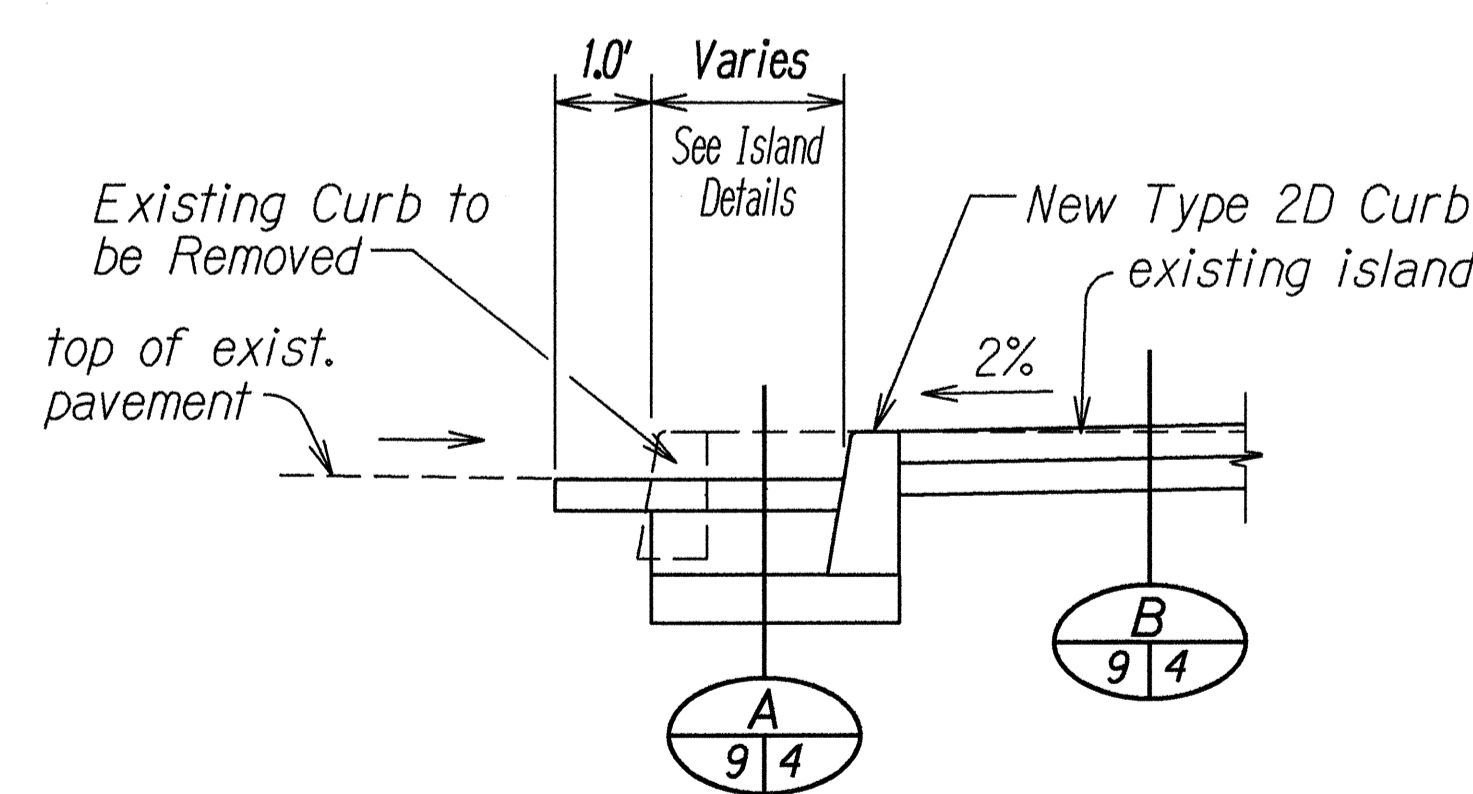


SECTION "A-A"
Scale: 1" = 1'-0"

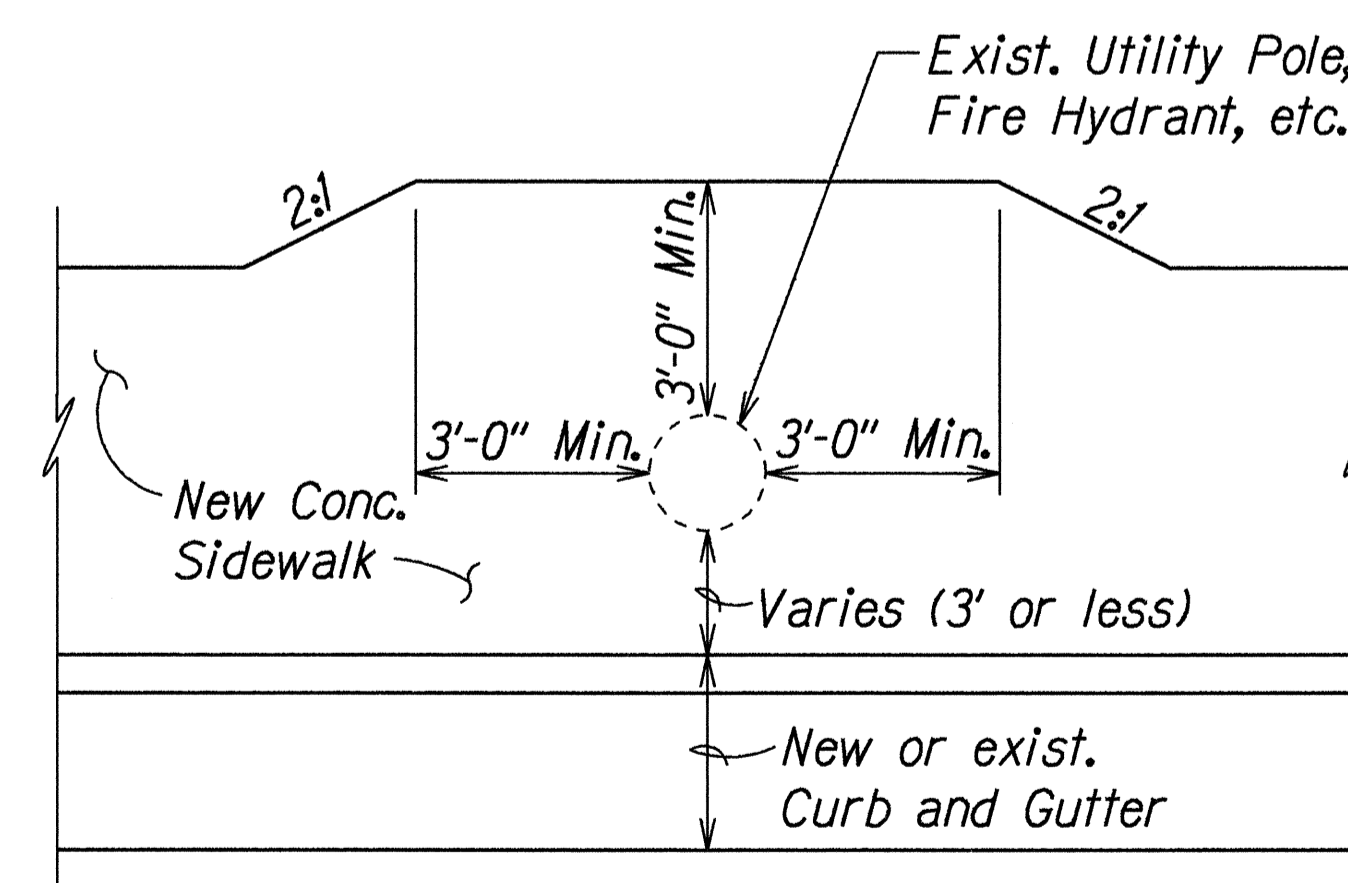
NOTES:

1. Removal and Disposal of existing driveway will be incidental to Item No. 610.0400 - 4-Inch Reinforced Concrete Driveways.
2. For additional details, see Standard Plan Sheet No. D-05.
3. For driveway at Sta. 132+00±, Rt., reverse 2% cross slope and meet existing grade at Right-of-Way Line. See Section TS 5 22 15 for the sidewalk section.

REINFORCED CONCRETE DROP DRIVEWAY TSDW 22 9



ISLAND RECONSTRUCTION SECTION TSISLE 10 9
Scale: 1/2" = 1'-0"



SIDEWALK DETAIL
(Existing Obstruction within the Sidewalk)
Not to Scale

7/30/98	Revised "Neat Sawcut" Call-Out for Reinforced Concrete Drop Driveway TSDW per Addendum No. 1.
DATE	REVISION
STATE OF HAWAII DEPARTMENT OF TRANSPORTATION HIGHWAYS DIVISION	
TYPICAL SECTION & DETAIL	
FARRINGTON HIGHWAY SIDEWALKS Leoku Street to Paiwa Street and Leole Street to Awanui Street Project No. 7101A-02-97	
Scale: As Noted	Date: May 1998
SHEET No. 6 OF 6 SHEETS	

ORIGINAL PLAN	DATE
SURVEY PLOTTED BY	7-30-98
DRAWN BY	L. Mitsuhashi, M.E. G.A.
DESIGNED BY	M. Quakala
CHECKED BY	diandisob