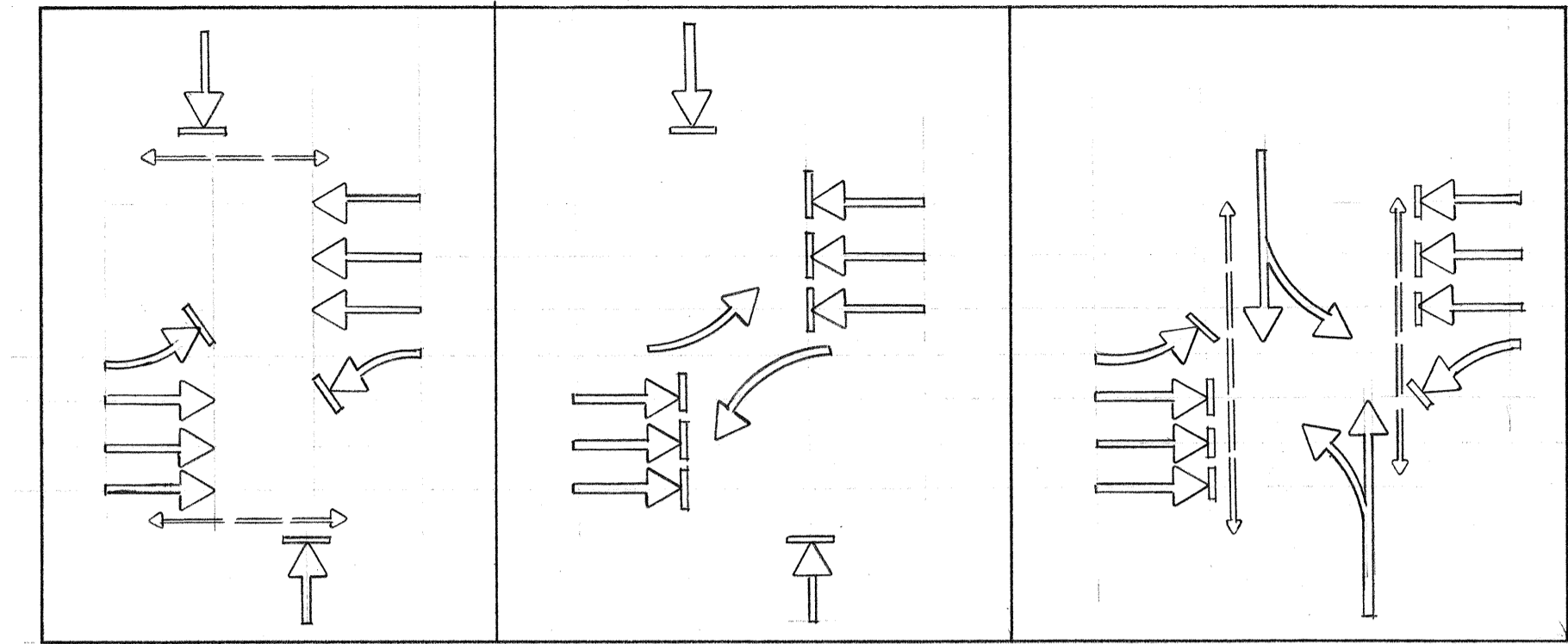


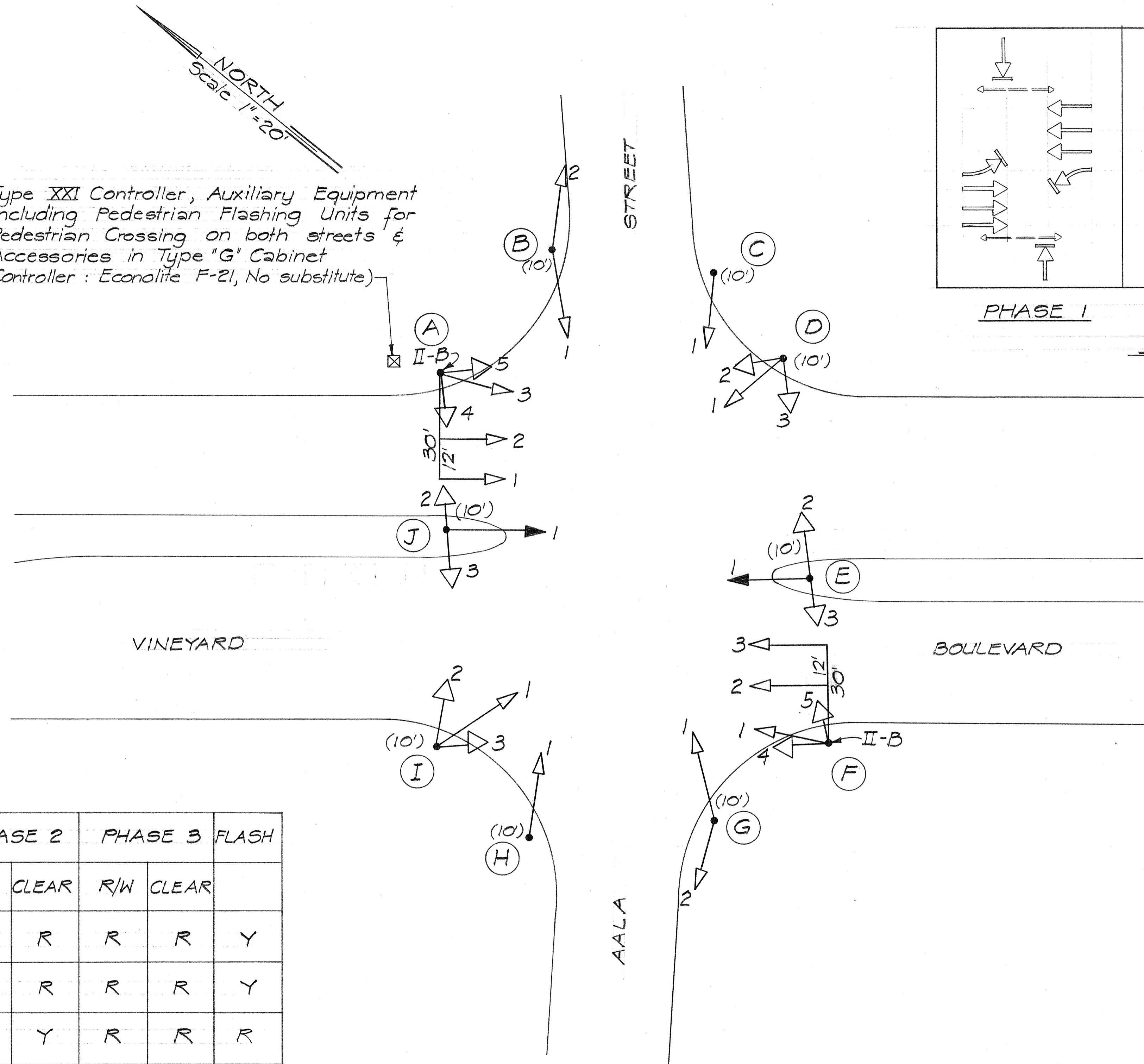
R	R	R	Don't Walk
Y	Y	Y	Walk
←	↑	G	
D-1	A-1, A-2	A-3	A-4, A-5
E-1*	F-2, F-3	B-1, B-2	D-2, D-3
I-1		C-1, F-1	E-2, E-3
J-1*		G-1, G-2	F-4, F-5
		H-1	I-2, I-3
			J-2, J-3

SIGNAL INDICATIONS
* Programmed Visibility

Type XXI Controller, Auxiliary Equipment including Pedestrian Flashing Units for Pedestrian Crossing on both streets & Accessories in Type 'G' Cabinet (Controller: Econolite F-21, No substitute)



PHASE 1 PHASE 2 PHASE 3
PHASE DIAGRAMS



	PHASE 1		PHASE 2		PHASE 3		FLASH
SIGNALS	R/W	CLEAR	R/W	CLEAR	R/W	CLEAR	
A-1, A-2 F-2, F-3	↑	Y	R	R	R	R	Y
A-3 F-1	G	Y	R	R	R	R	Y
D-1, E-1 I-1, J-1	R	R	←	Y	R	R	R
B-1, B-2, C-1 G-1, G-2, H-1	R	R	R	R	G	Y	R
A-5, D-2 F-4, I-3	W	FDW	DW	DW	DW	DW	OFF
A-4, D-3, E-2, E-3, F-5, I-2, J-2, J-3	DW	DW	DW	DW	W	FDW	DW
							OFF

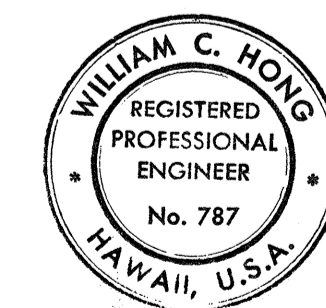
SIGNAL INTERVAL SEQUENCE

LAYOUT PLAN

Scale 1" = 20'



GRAPHIC SCALE



THIS WORK WAS PREPARED BY
ME OR UNDER MY SUPERVISION
William C. Hong

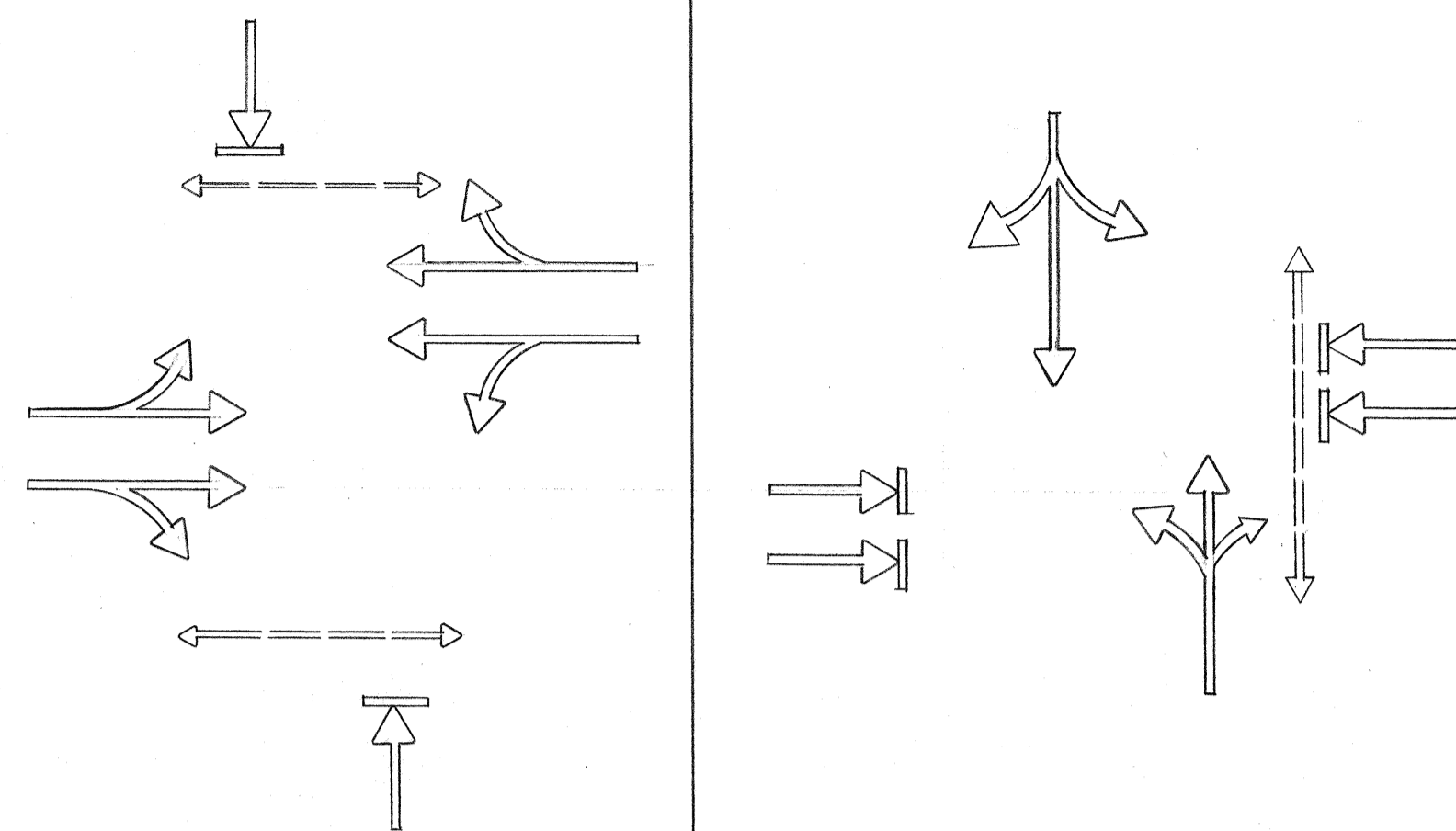
STATE OF HAWAII
DEPARTMENT OF TRANSPORTATION
HIGHWAYS DIVISION

TRAFFIC SIGNALS
ON
VINEYARD BOULEVARD AT
AALA STREET
PROJECT No. EHS-T-9001 (13)

Scale: As shown Date: June 9, 1972

SHEET No. 1 OF 3 SHEETS

FED. ROAD DIST. NO.	STATE	FED. AID PROJ. NO.	FISCAL YEAR	SHEET NO.	TOTAL SHEETS
HAWAII	HAW.	EHS-T-2001(5)	1972	4	5



R
Y
G

Don't Walk
Walk

A-1, A-2
B-1, B-2, B-3
C-1, C-2
D-1, D-2, D-3

C-3
D-4

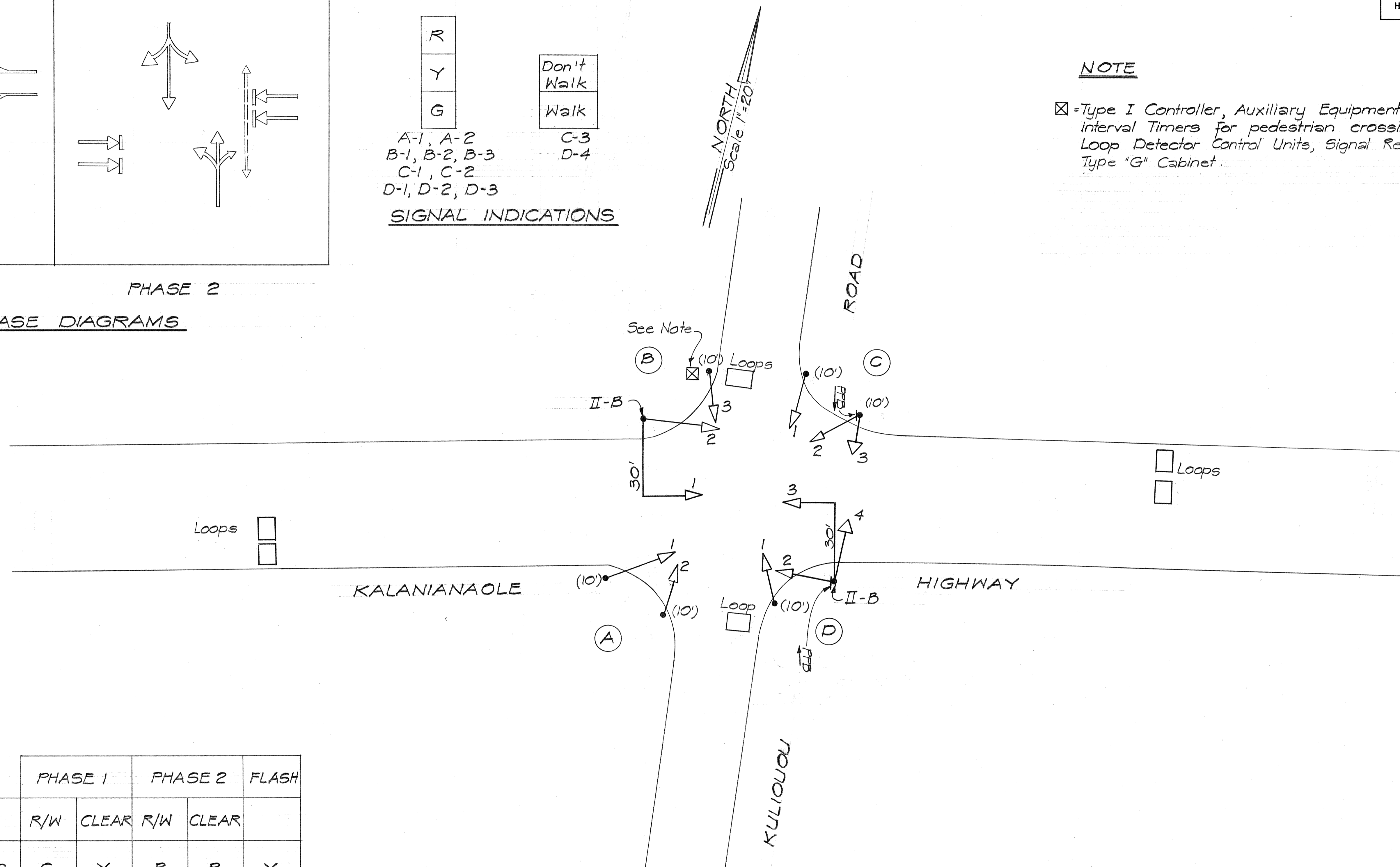
SIGNAL INDICATIONS

NOTE

☒ = Type I Controller, Auxiliary Equipment including Pedestrian interval Timers for pedestrian crossing on Kalanianaʻole Highway, Loop Detector Control Units, Signal Relays and Accessories in Type "G" Cabinet.

PHASE 1 PHASE 2

PHASE DIAGRAMS

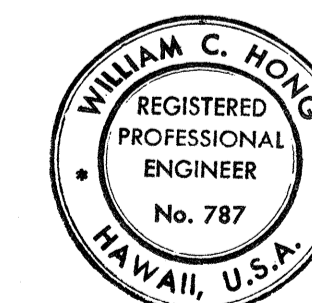
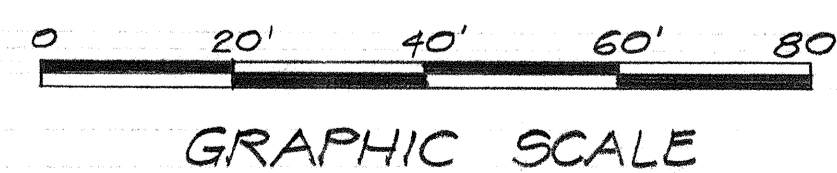


	PHASE 1		PHASE 2		FLASH
SIGNALS	R/W	CLEAR	R/W	CLEAR	
A-1 B-1, B-2, C-2 D-2, D-3	G	Y	R	R	Y
A-2, B-3 C-1, D-1	R	R	G	Y	R
C-3, D-4	DW	DW	W	DW	OFF

SIGNAL INTERVAL SEQUENCE

LAYOUT PLAN

Scale 1" = 20'



THIS WORK WAS PREPARED BY
ME OR UNDER MY SUPERVISION
William C. Horn

**STATE OF HAWAII
DEPARTMENT OF TRANSPORTATION
HIGHWAYS DIVISION**

TRAFFIC SIGNALS
ON
KALANIANA'OLE HIGHWAY
AT KULIOUOU ROAD
PROJECT No. EHS-T-9001(13)

Scale: As shown Date: June 9, 1972
SHEET No. 2 OF 3 SHEETS

FED. ROAD DIST. NO.	STATE	FED. AID PROJ. NO.	FISCAL YEAR	SHEET NO.	TOTAL SHEETS
HAWAII	HAW.	EHS-T-9001(13)	1972	5	5

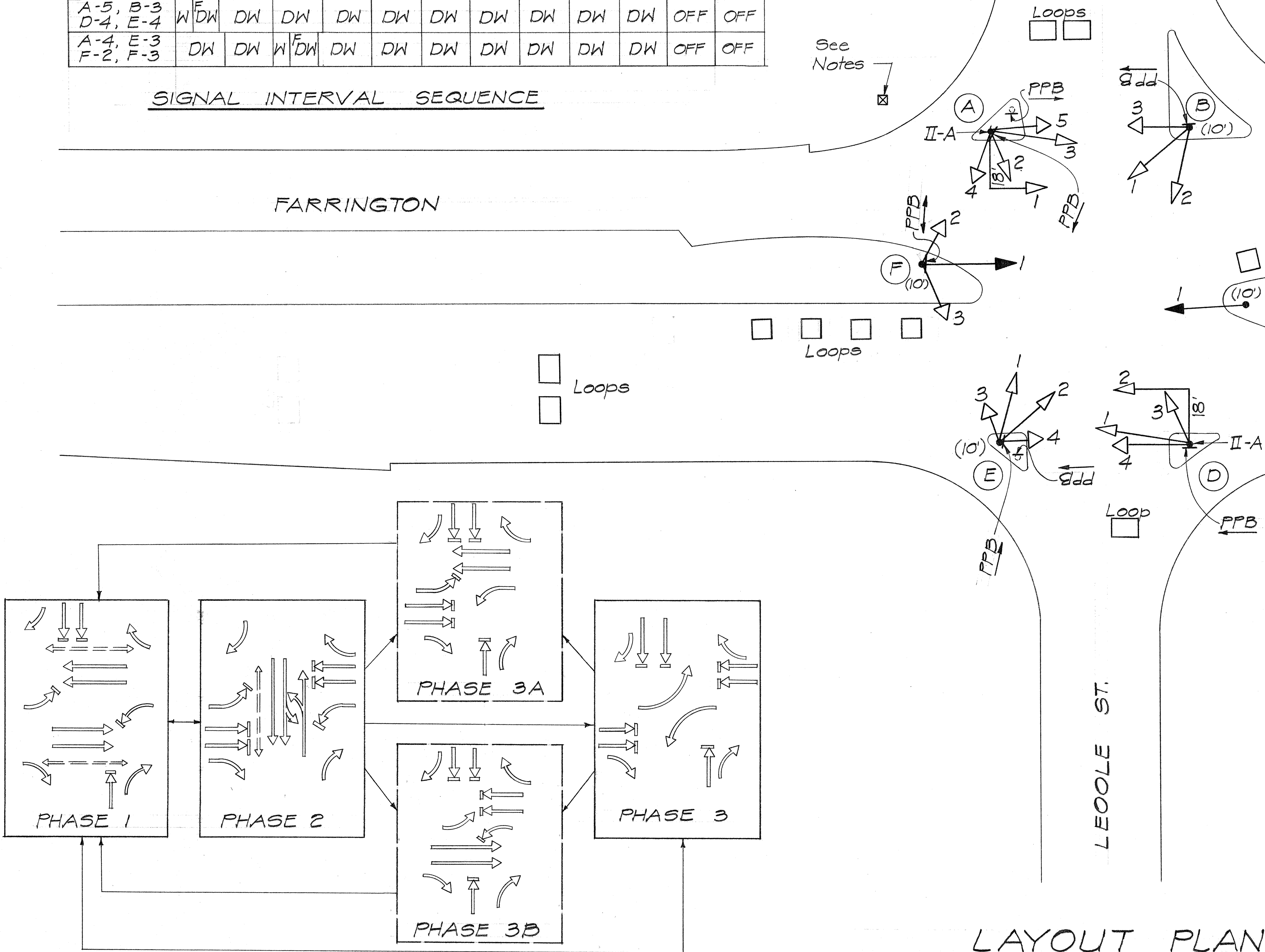
	PHASE 1		PHASE 2		PHASE 3A		PHASE 3B		PHASE 3		FLASH (ALL RED)	FLASH (ALL RED)
SIGNALS	R/W	CLEAR	R/W	CLEAR	R/W	CLEAR	R/W	CLEAR	R/W	CLEAR	Y	R
A-1, A-3	↑	Y	R	R	↑	Y	R	R	R	R	Y	R
A-2, B-2, D-3	R	R	G	Y	R	R	R	R	R	R	R	R
E-1	R	R	↑	Y	R	R	R	R	R	R	R	R
E-2, F-1	R	R	R	R	←	Y	R	R	←	Y	R	R
D-1, D-2	↑	Y	R	R	R	R	↑	Y	R	R	Y	R
B-1, C-1	R	R	R	R	R	R	←	Y	←	Y	R	R
A-5, B-3, D-4, E-4	W/DW	DW	DW	DW	DW	DW	DW	DW	DW	DW	OFF	OFF
A-4, E-3, F-2, F-3	DW	DW	W/DW	DW	DW	DW	DW	DW	DW	DW	OFF	OFF

SIGNAL INTERVAL SEQUENCE

① Pre-emption to be controlled by Pre-emption Switch and Timer located at Waipahu Fire Station at Leole Street and Leonui Street

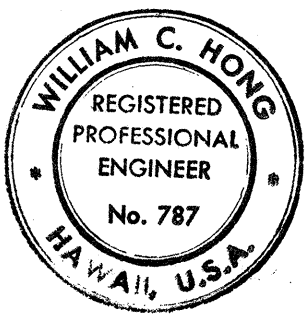
R	R	R	Don't Walk Walk
Y	Y	Y	
←	↑	G	
B-1 C-1* E-2 F-1*	A-1, A-3 D-1, D-2 E-1	A-2 B-2 D-3	A-4, A-5 B-3, D-4 E-3, E-4 F-2, F-3

SIGNAL INDICATIONS
* Programmed Visibility



NOTES

☒ = Type II Controller, Auxiliary Equipment including Pedestrian Interval Timers for Pedestrian Crossing on both streets, 2 each Minor Movement Controllers, Loop Detector Control Units, Pre-emption Equipment, Signal Relays & Accessories in Type "M" Cabinet.
Controller : Automatic Signal Model 1826N (No substitute)



STATE OF HAWAII
DEPARTMENT OF TRANSPORTATION
HIGHWAYS DIVISION
TRAFFIC SIGNALS
ON
FARRINGTON HIGHWAY AT
LEOLE AND LEOKU STREETS
PROJECT NO. EHS-T-9001(13)

THIS WORK WAS PREPARED BY
ME OR UNDER MY SUPERVISION
William C. Hong

Scale : As shown Date: June 9, 1972
SHEET No. 3 OF 3 SHEETS

DESIGNED BY	DATE
TRACED BY	
QUANTITIES BY	
CHECKED BY	
ORIGINAL PLAN	
NOTE BOOK	
No.	