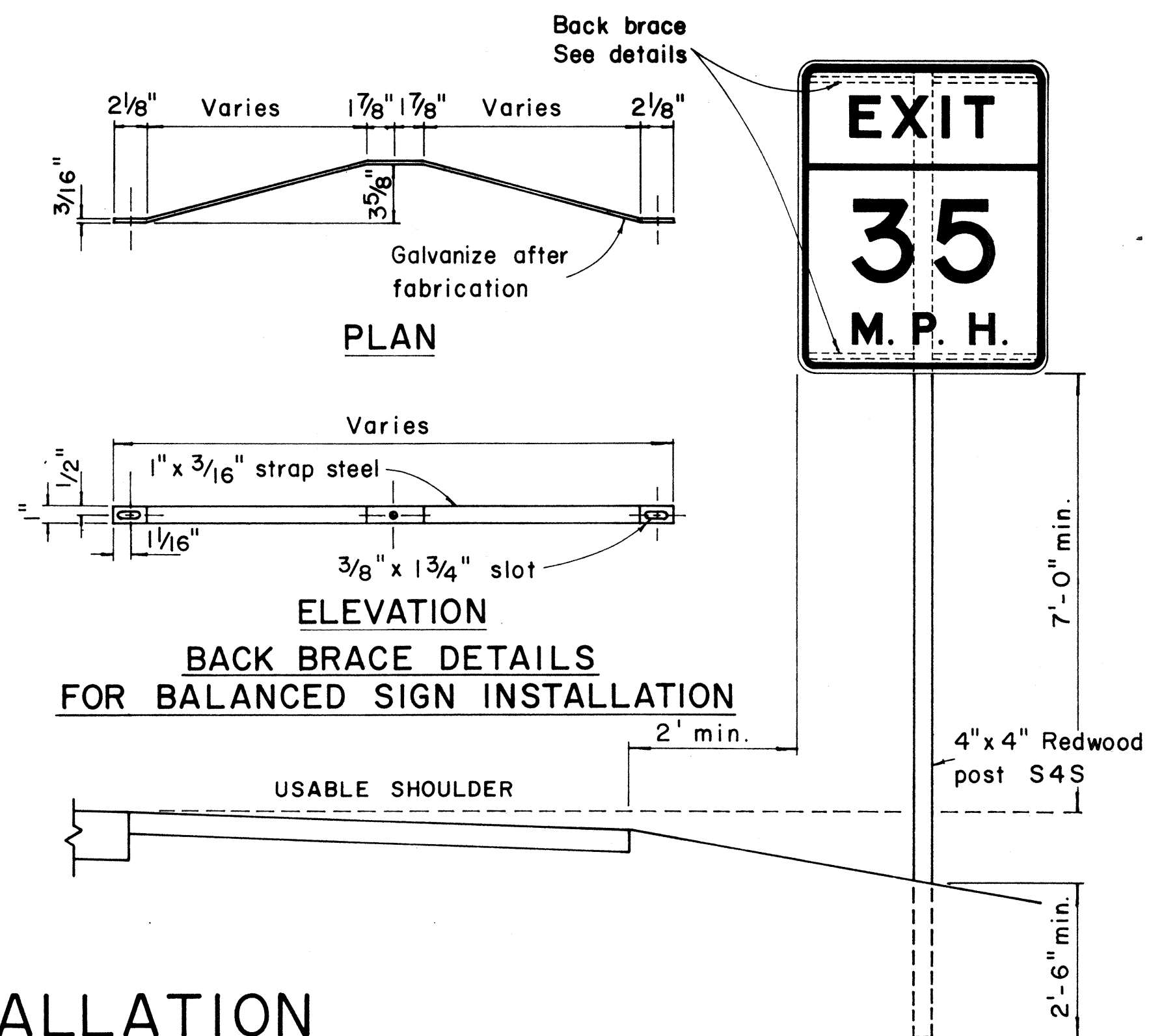
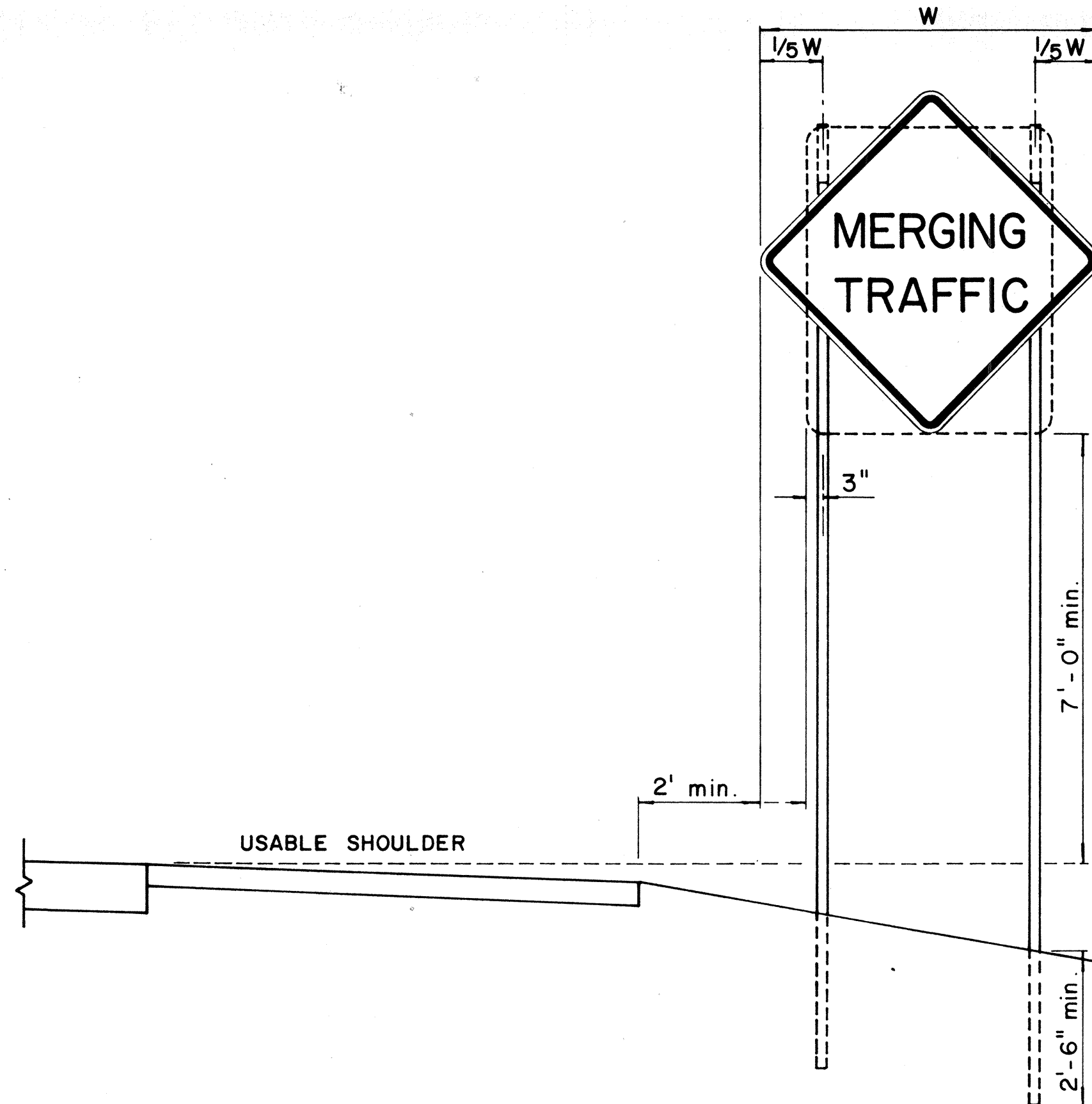
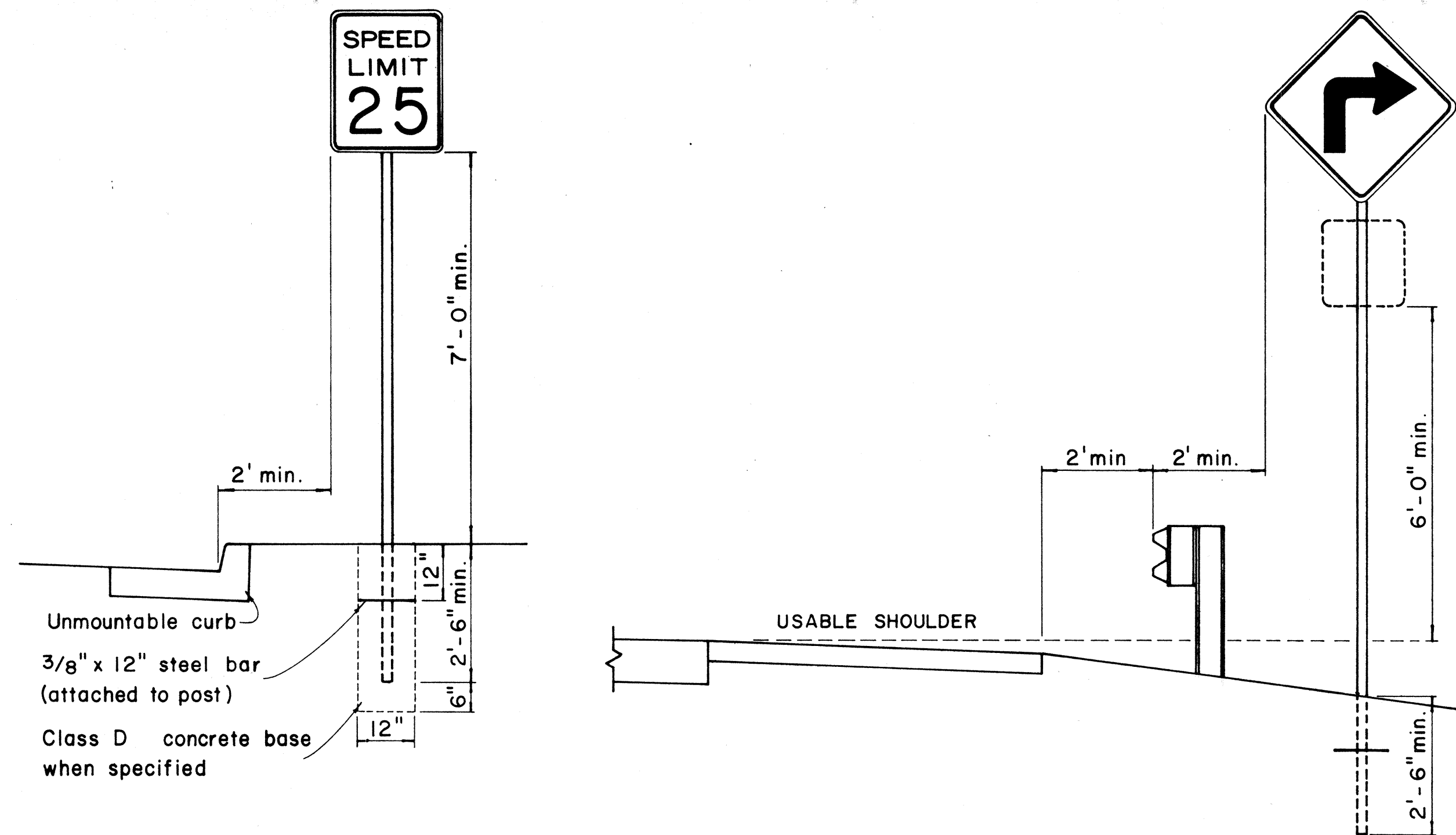
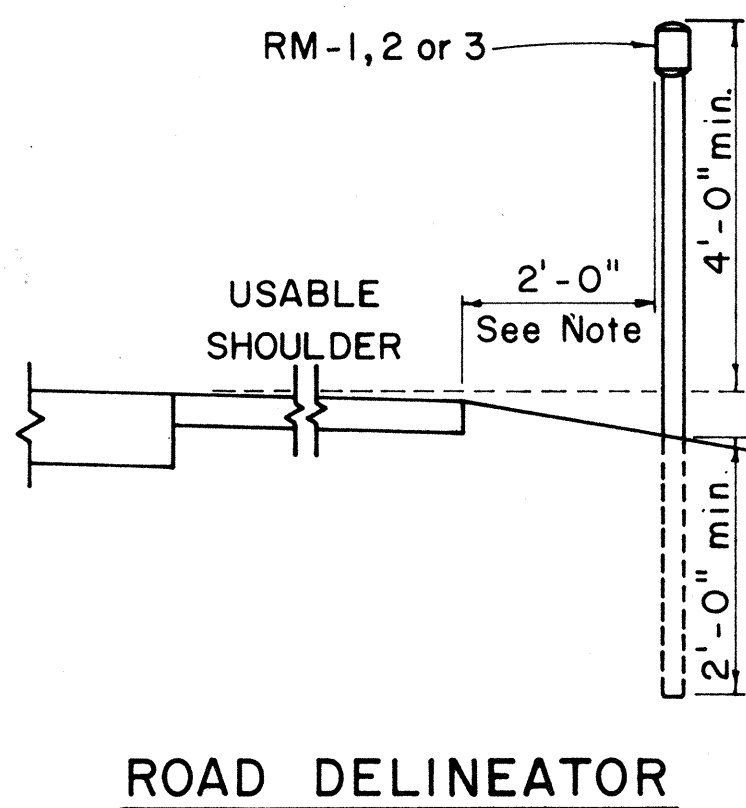


FED. ROAD DIST. NO.	STATE	PROJ. NO.	FISCAL YEAR	SHEET NO.	TOTAL SHEETS
HAWAII	HAW.	90A-01-71	1970	5	8

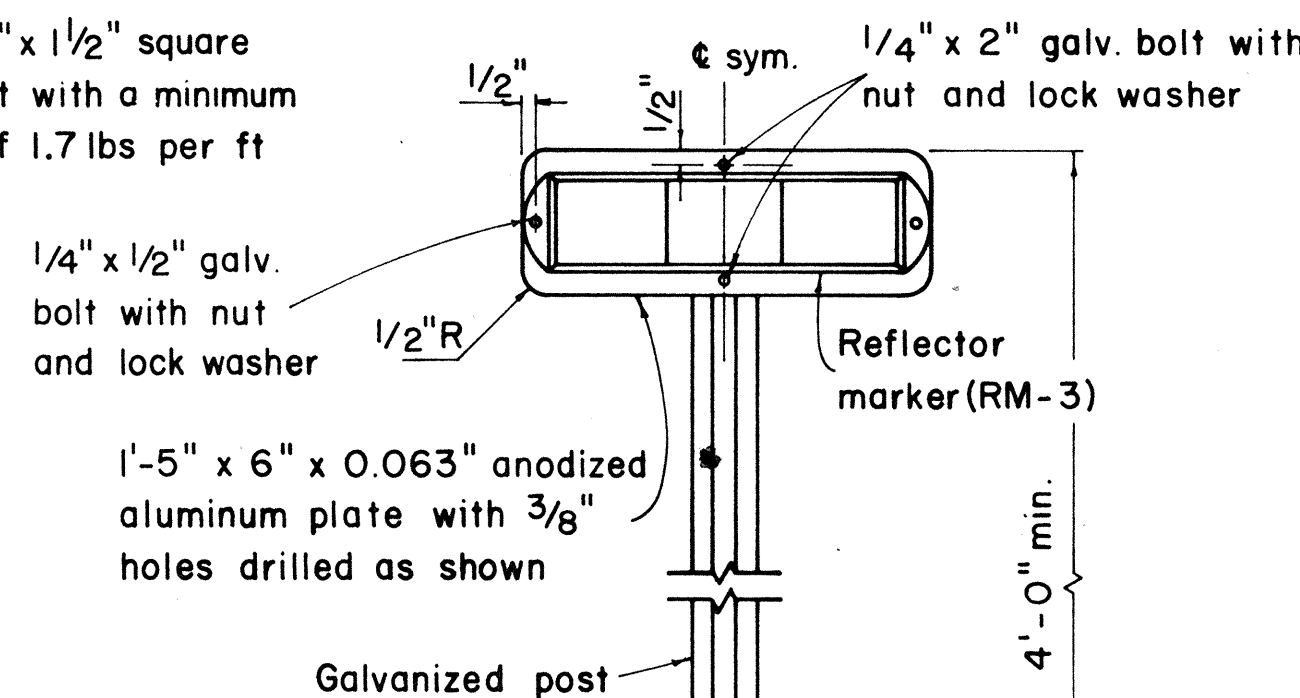
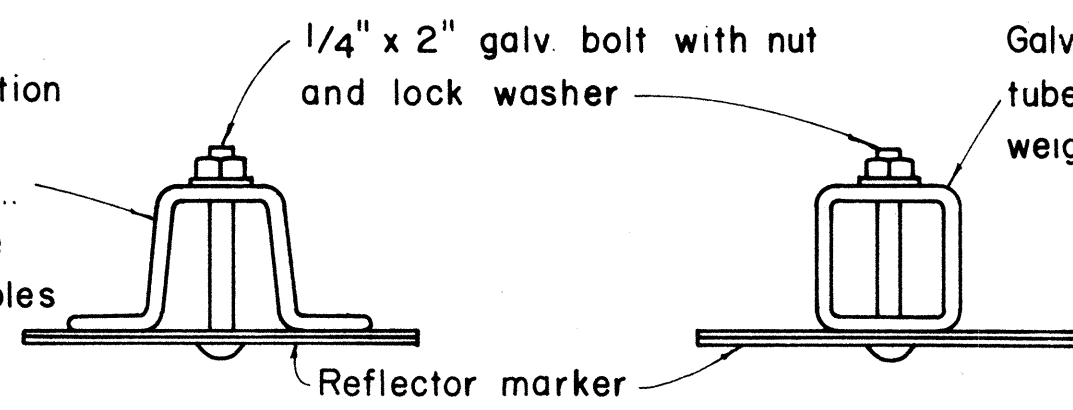


HEIGHT AND LATERAL LOCATION OF SIGNS - TYPICAL INSTALLATION

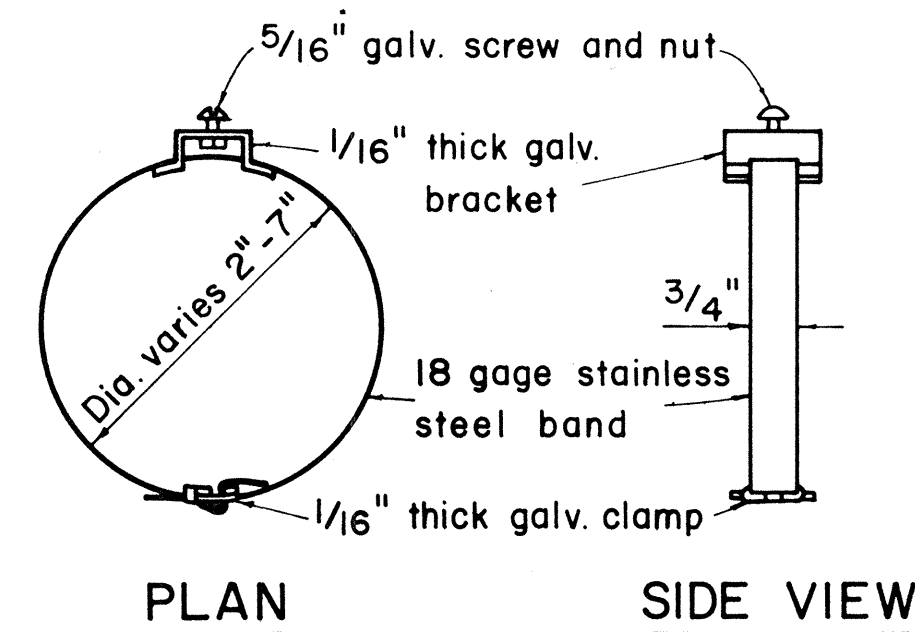


Galv. flanged channel
1/8" x 3 1/16" rolled section
post with a minimum
weight of 2 lbs. per ft.
Upper 2 ft. shall have
a single row of 3/8" holes
centered in the web at
1" o.c.

TYPICAL SECTION OF ROAD DELINEATOR



TYPICAL DETAIL
HORIZONTAL REFLECTOR MARKER
RM-3H



TYPICAL BAND BRACKET FOR
MOUNTING TRAFFIC SIGNS

GENERAL NOTES:

- Sign posts shall be 2" galv. standard pipe or 2" x 2" galv. sq. tube post.
- Signs 48" and wider or larger than 10 sq. ft. in area shall be mounted on two 2" galv. standard pipe or two 2" x 2" galv. sq. tube post or 4" x 4" redwood post S4S.
- Signs shall be attached to post with 5/16" galv. bolts with nuts and 7/8" x 0.06 stainless steel washers with neoprene rubber gasket.
- Sign posts shall extend 3 1/2" above sign where required for City and County street name signs.
- Reflector markers RM-1, 2, 3 shall be glass sphere reflector markers with 4" x 5" reflector units (as shown) or plastic prismatic reflector markers with 3" diameter reflector units.
- Clearance markers (RM-3, RM-4) shall be installed with the edge of the marker in line with the inner edge of the obstruction.
- (R) or (L) indicates right or left and shall be as shown on the plans.

APPROVAL RECOMMENDED:
Eichi Tanaka 12/29/69
TRAFFIC ENGINEER DATE

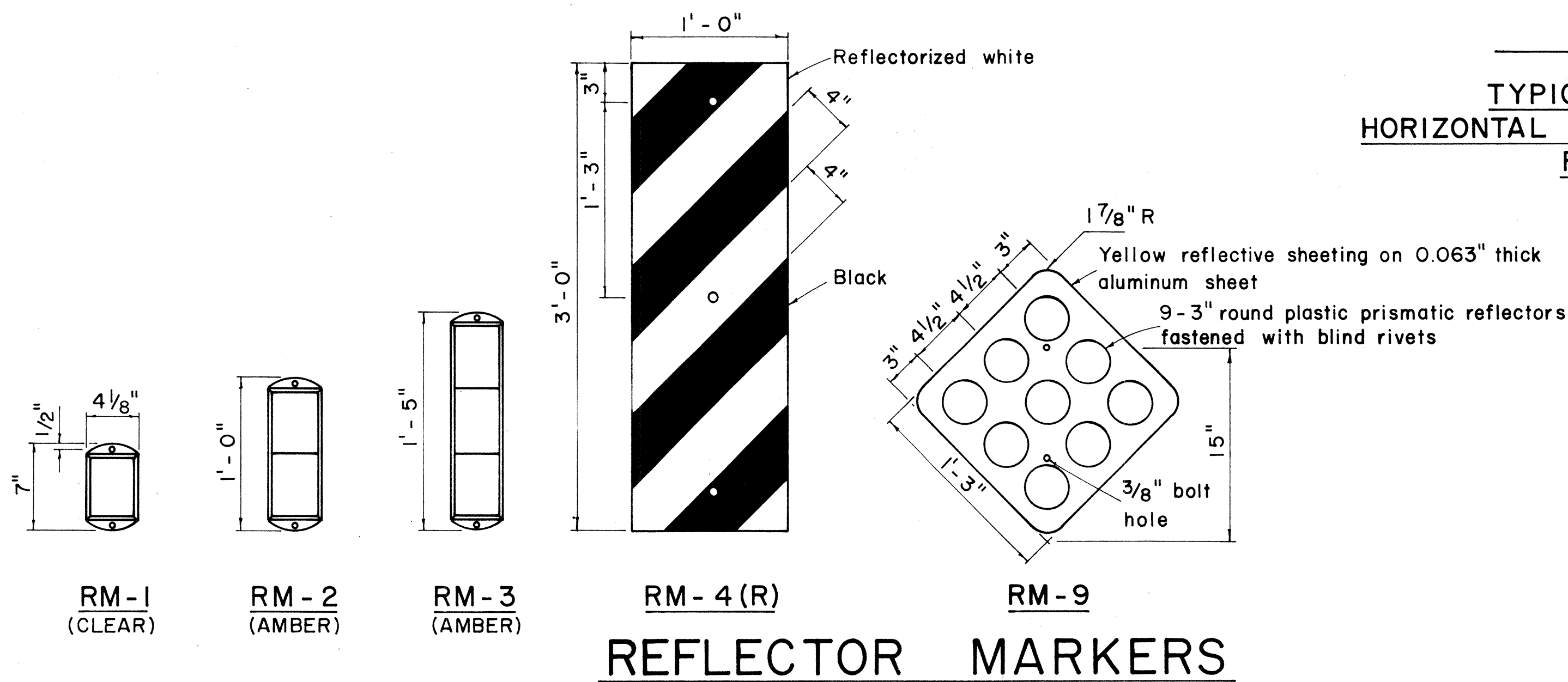
APPROVED:
John J. DeLoe 12-30-69
ASSISTANT CHIEF, ENGINEERING DATE

NO	REVISION	APPROVED BY	DATE

STATE OF HAWAII DEPARTMENT OF TRANSPORTATION HIGHWAYS DIVISION
STANDARD DETAILS
MISCELLANEOUS SIGN DETAILS
Not to scale March, 1968

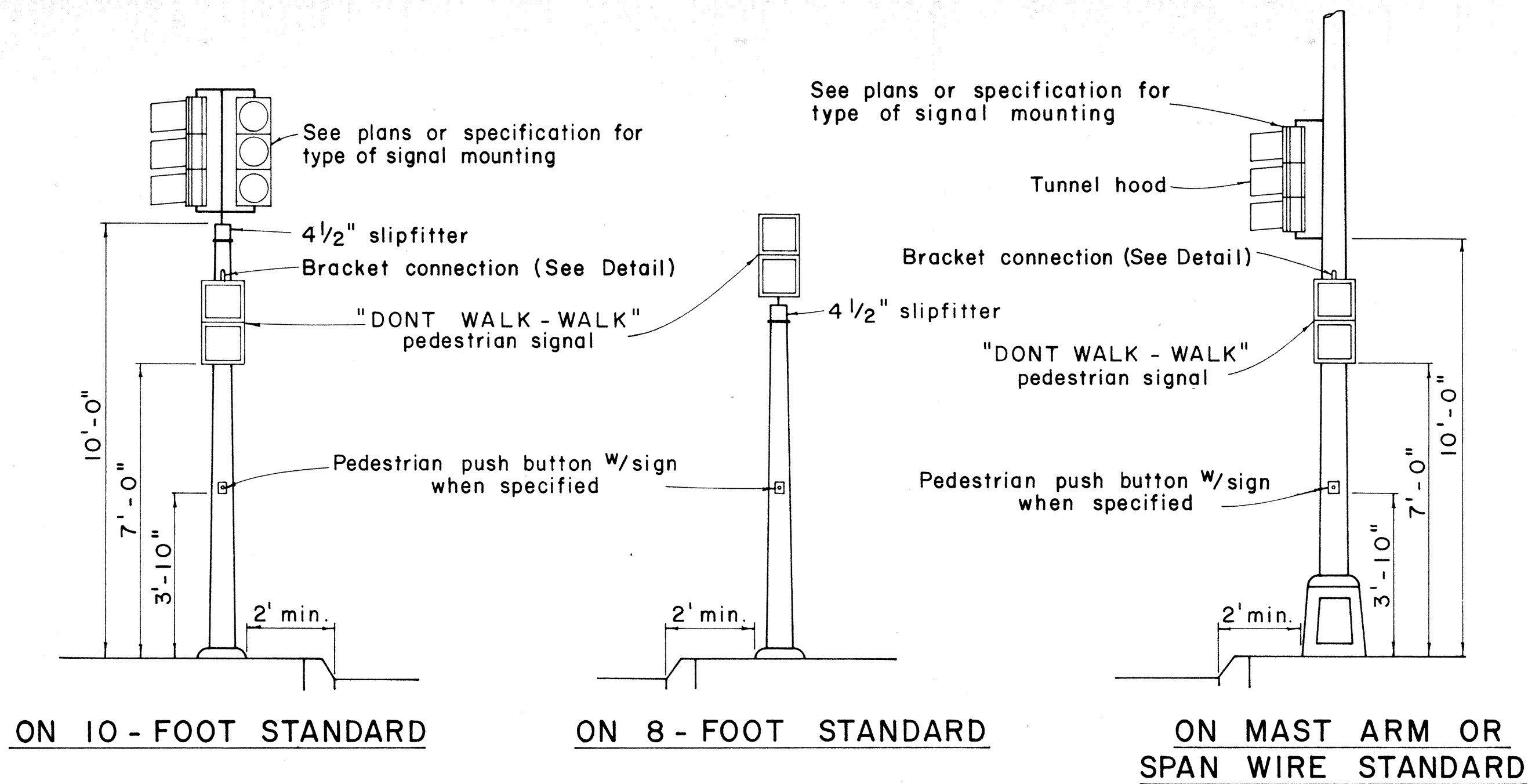
SHEET No. 2 OF 5 SHEETS DT 100

ORIGINAL PLAN	DATE
DRAWN BY	
CHECKED BY	
NOTE BOOK	
CHECKED BY	
No.	

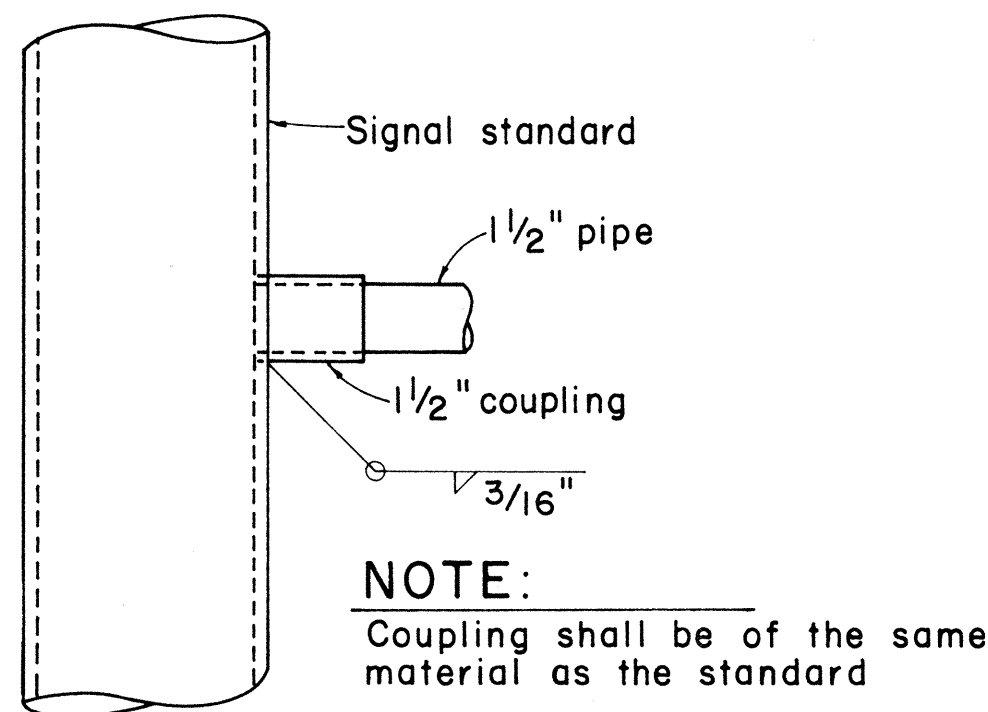


REFLECTOR MARKERS

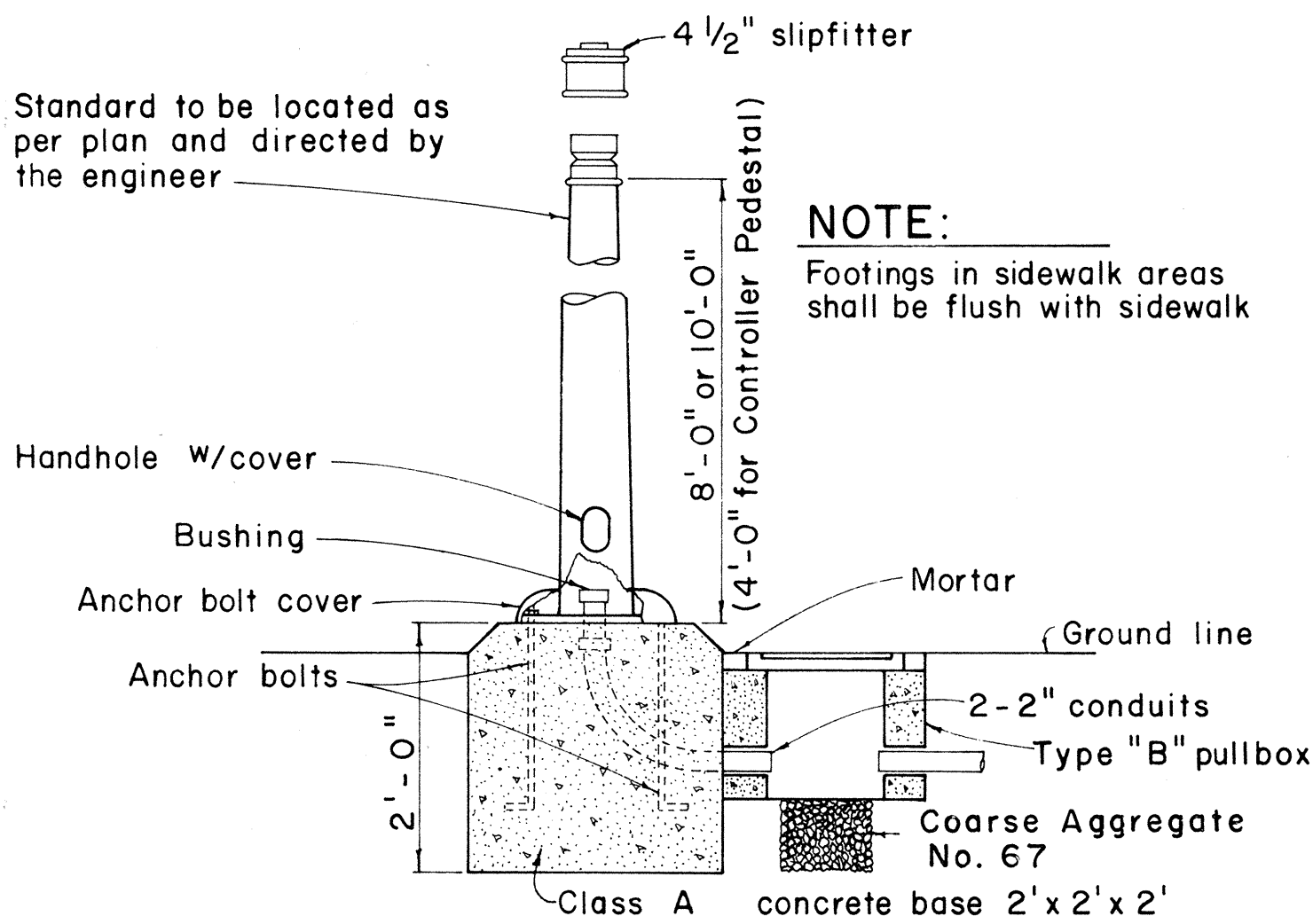
FED. ROAD DIST. NO.	STATE	PROJ. NO.	FISCAL YEAR	SHEET NO.	TOTAL SHEETS
HAWAII	HAW.	90A-01-71	1970	6	8



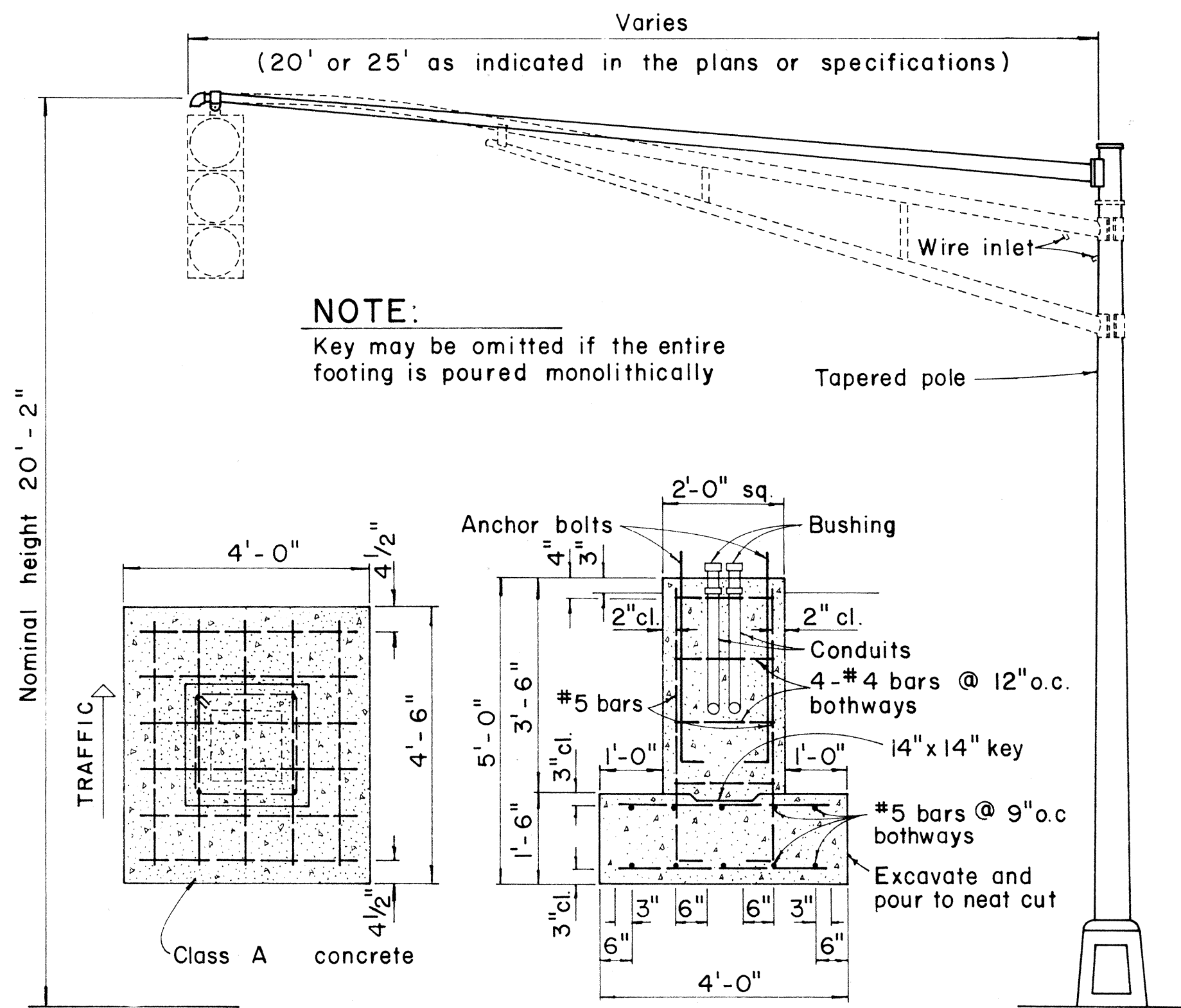
TYPICAL EQUIPMENT MOUNTINGS



DETAIL OF BRACKET CONNECTION

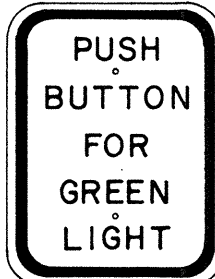


FOOTING FOR SIGNAL STANDARD OR CONTROLLER PEDESTAL

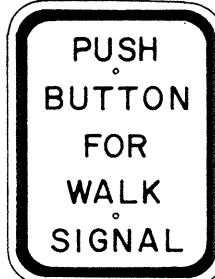


MAST ARM FOOTING AND STANDARD

TRAFFIC SIGN AS SPECIFIED IN PLAN
1. "PUSH BUTTON FOR GREEN LIGHT" (R9-6)
2. "PUSH BUTTON FOR WALK SIGNAL" (R9-7)

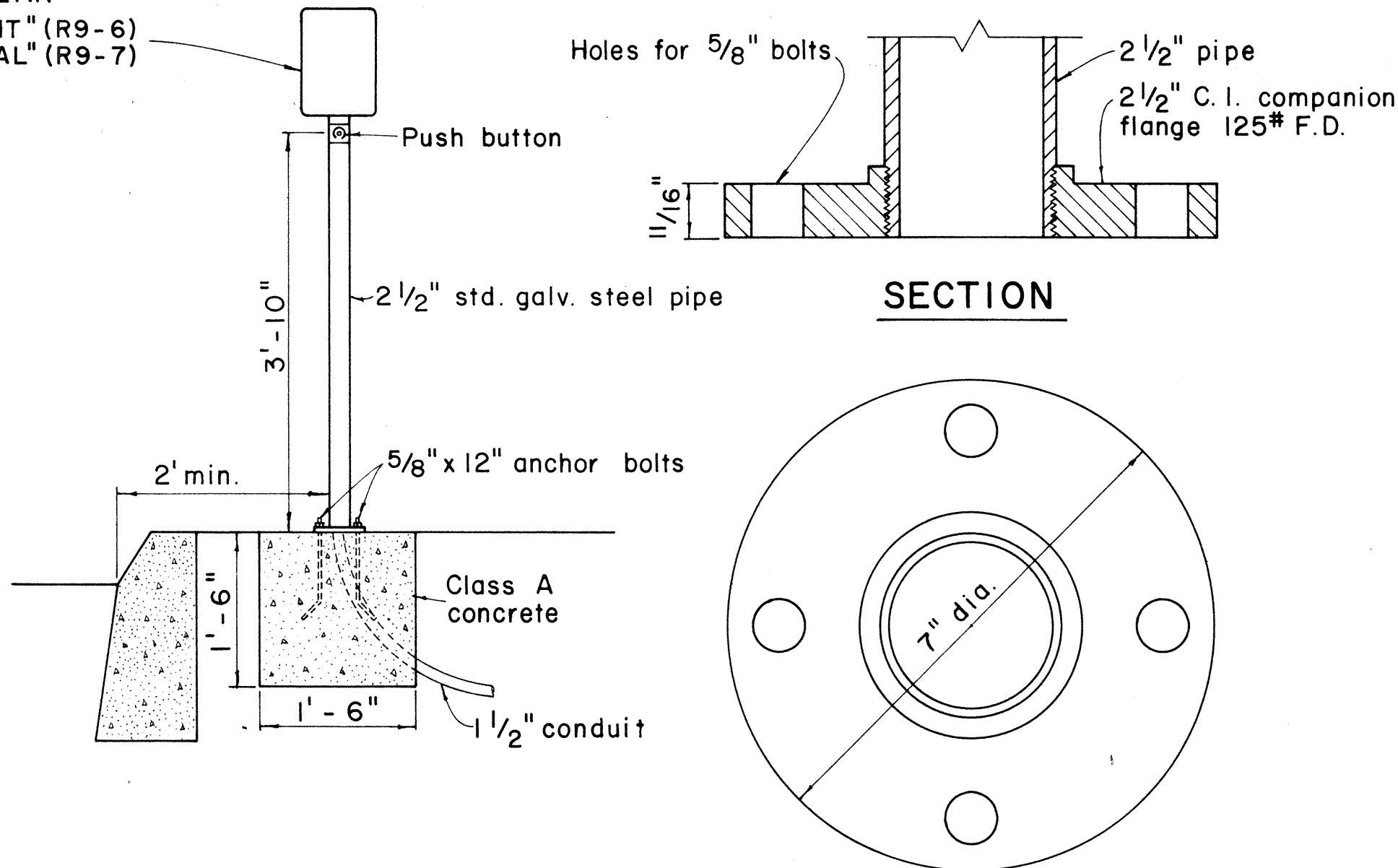


R9-6
9" x 12"



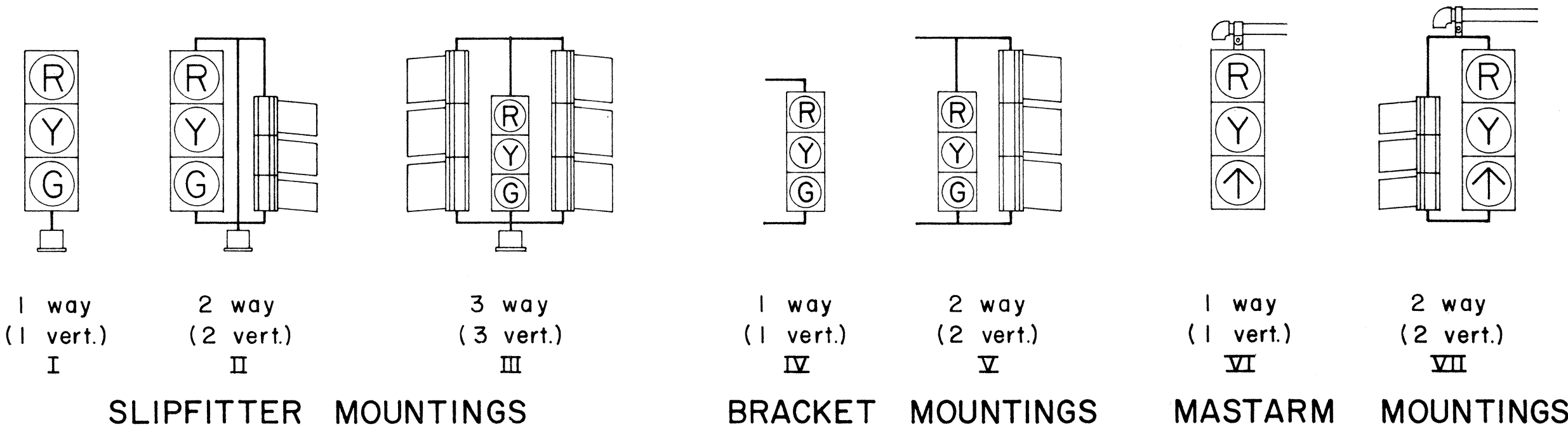
R9-7
9" x 12"

NOTE:
1. Conduits shall protrude 2" max. above finished surface of foundation.
2. Conduits shall slope away from pole foundation.
3. Post and base shall be painted with one coat of approved weather proof dark green enamel.

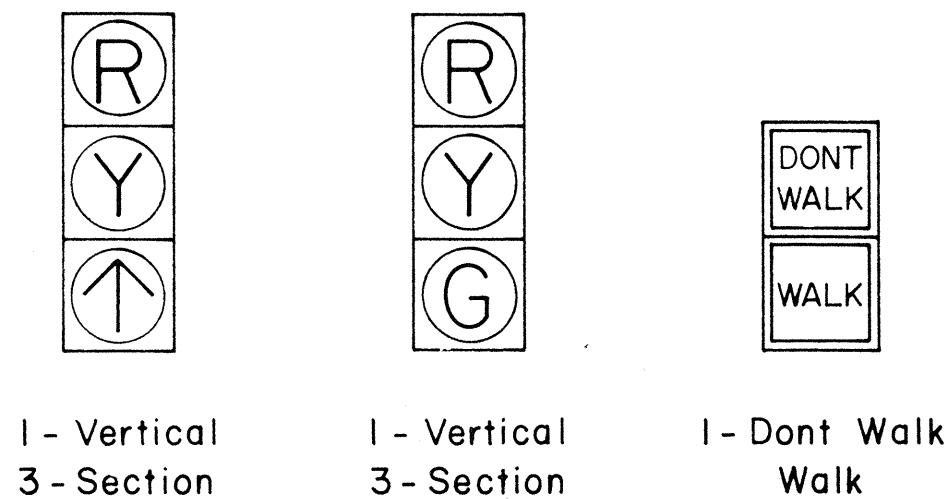


BASE DETAIL

PEDESTRIAN PUSH BUTTON POST AND FOOTING



TYPICAL VEHICULAR AND PEDESTRIAN SIGNAL MOUNTINGS



TYPICAL SIGNAL ARRANGEMENTS

APPROVAL RECOMMENDED:
Eichi Tanaka 12/29/69
TRAFFIC ENGINEER DATE

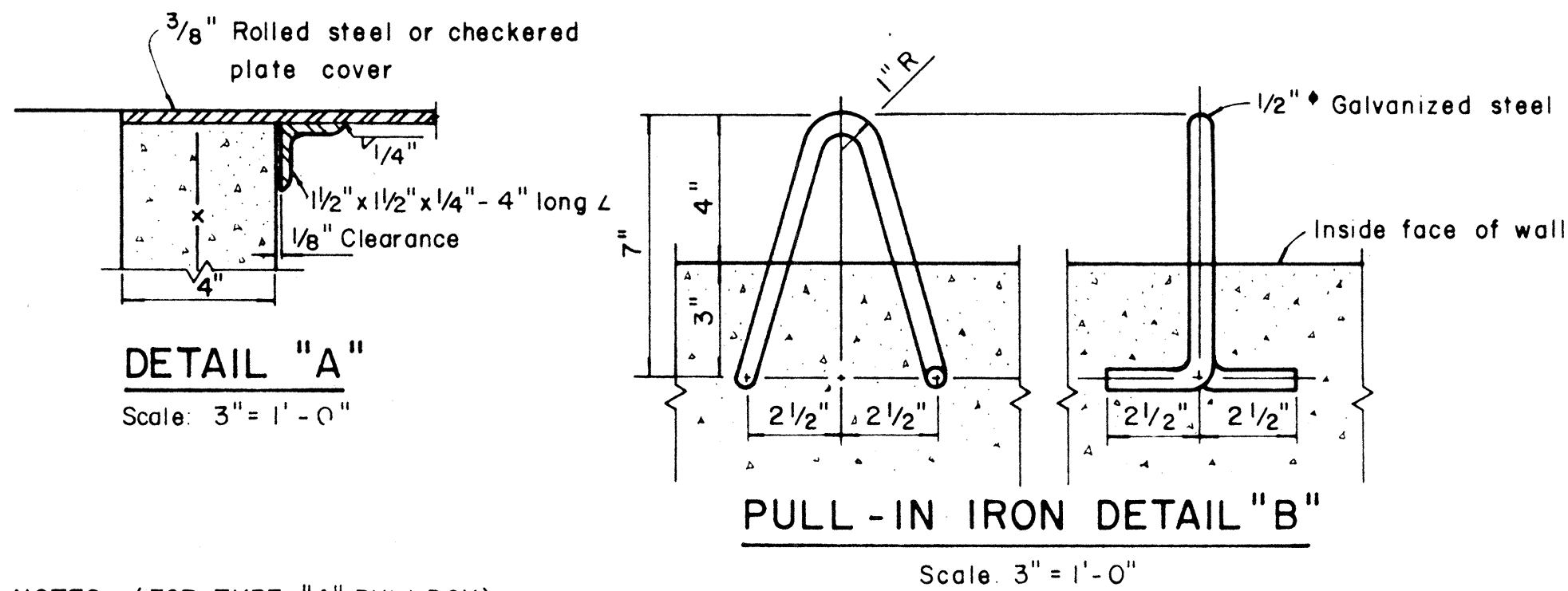
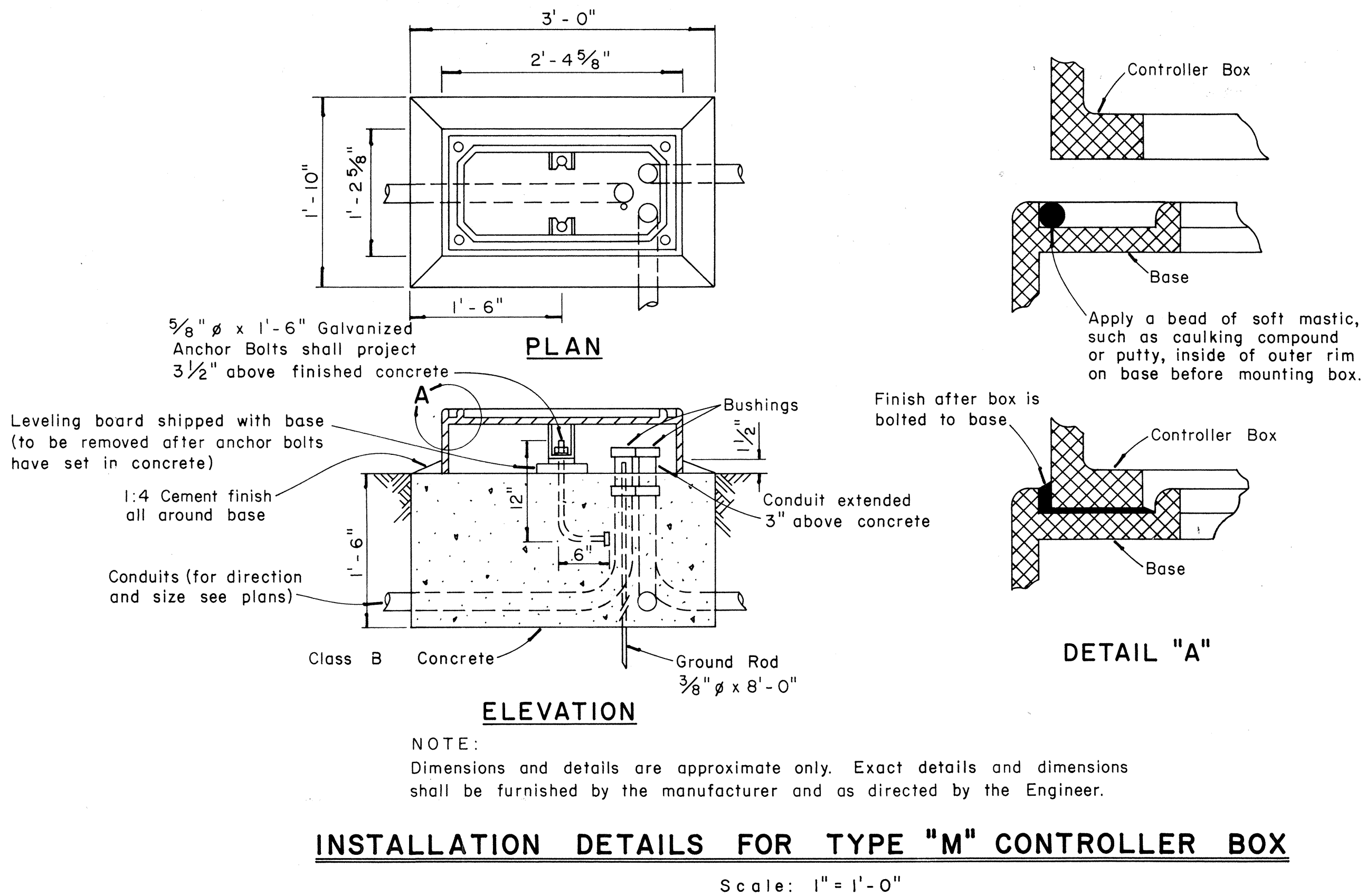
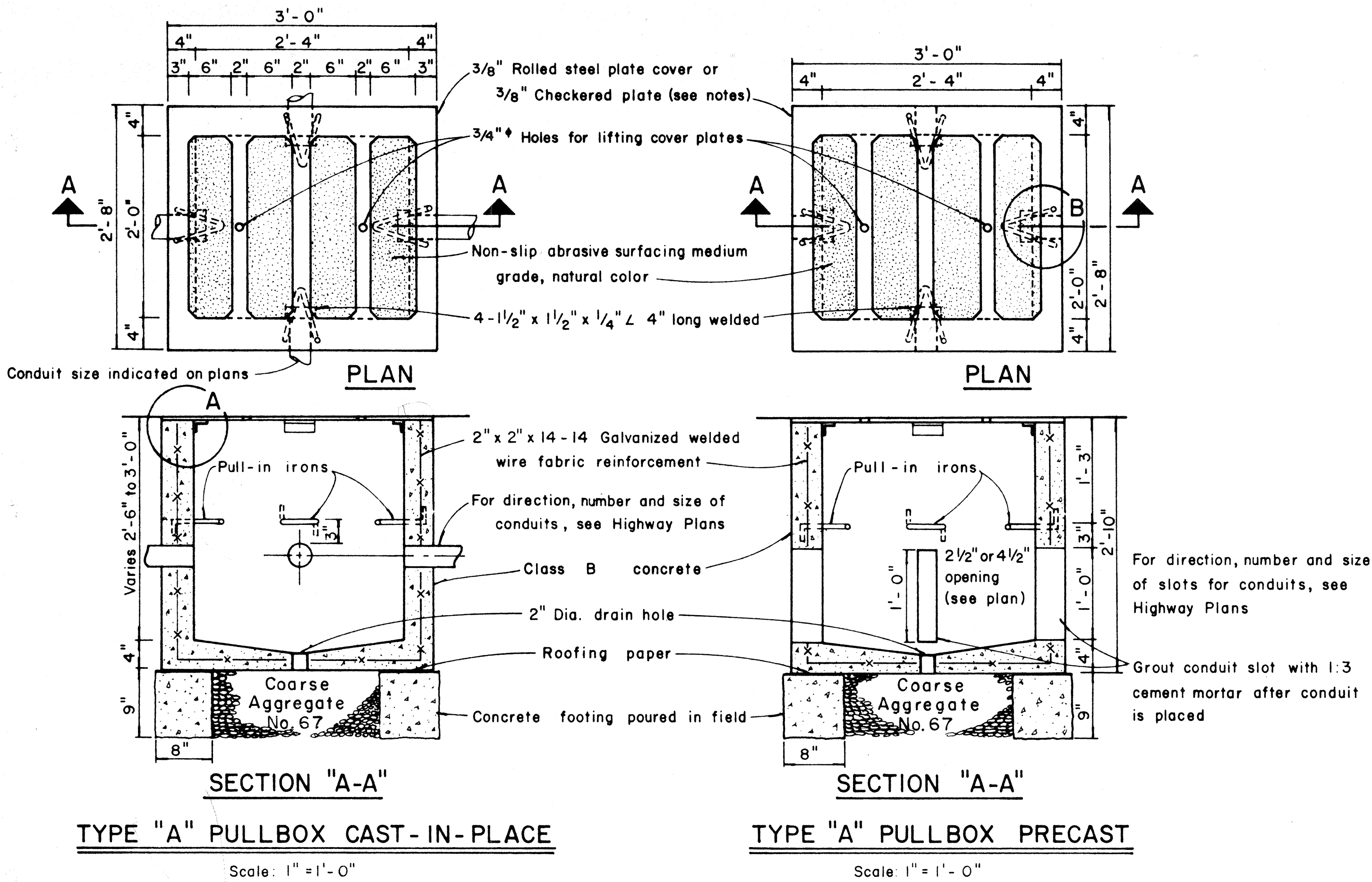
John J. J. J. 12/29/69
ASSISTANT CHIEF, ENGINEERING DATE

NO.	REVISION	APPROVED BY	DATE

STATE OF HAWAII
DEPARTMENT OF TRANSPORTATION
HIGHWAYS DIVISION
TRAFFIC SIGNAL SYSTEM
MISCELLANEOUS DETAILS
Not to Scale January, 1968
SHEET No. 3 OF 5 SHEETS DT 400

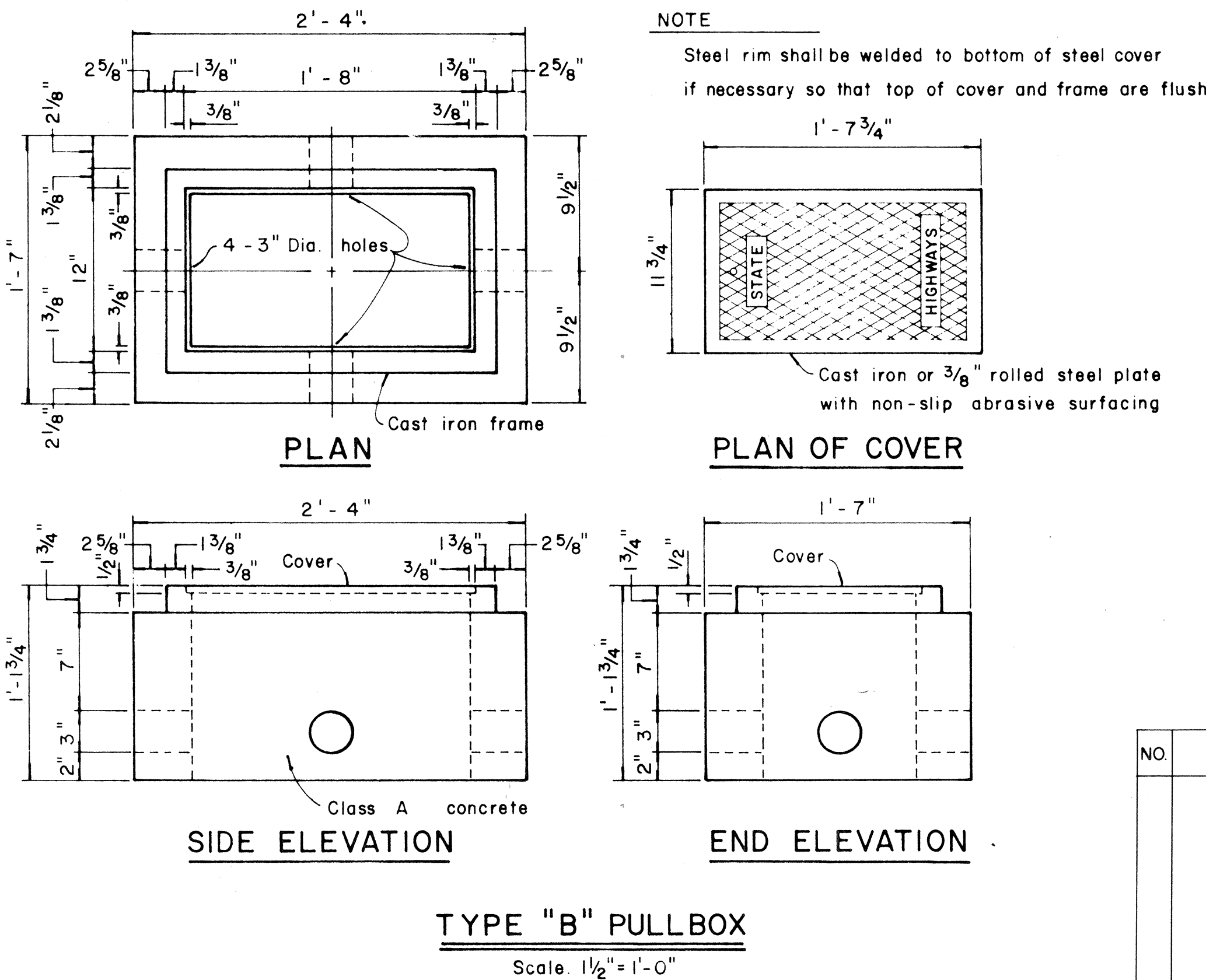
SURVEY PLOTTED BY	DATE
DRAWN BY	
CHECKED BY	
NOTE BOOK	

FED. ROAD DIST. NO.	STATE	PROJ. NO.	FISCAL YEAR	SHEET NO.	TOTAL SHEETS
HAWAII	HAW.	90A-01-71	1970	7	8



NOTES: (FOR TYPE "A" PULLBOX)

- 3/8" Rolled steel plate cover with non-slip abrasive surfacing medium grade, natural color shall be used on all pullboxes located on sidewalk areas where pedestrians are walking.
- 3/8" Checkered plate cover shall be used on all pullboxes located in median areas and other locations where there are no pedestrians walking.
- Pull irons shall be placed opposite each conduit slot.
- Covers on all pullboxes located in sidewalk areas shall be set flush with the concrete sidewalk.
- Each pullbox shall have a pair of pull irons opposite each other for lifting purposes.



APPROVAL RECOMMENDED:
Erich Tanaka
 TRAFFIC ENGINEER
 DATE: 12/29/69

APPROVED:
Wm. J. J. J.
 ASSISTANT CHIEF, ENGINEERING
 DATE: 12-30-69

NO.	REVISION	APPROVED BY	DATE

STATE OF HAWAII
 DEPARTMENT OF TRANSPORTATION
 HIGHWAYS DIVISION
STANDARD DETAILS
PULLBOXES
 AND
TYPE "M" CONTROLLER BOX
 Scale as noted Date: 12-30-69
SHEET No. 4 OF 5 SHEETS DT 402

DATE	
SURVEY PLOTTED BY	
DRAWN BY	
DESIGNED BY	
QUANTITIES BY	
CHECKED BY	
ORIGINAL PLAN	
NOTE BOOK	

Diagram illustrating the dimensions and components of a sign panel assembly:

- Overall Width:** 6'-0" or 8'-0"
- Overall Height:** 8'-6" Min.
- Sign Panel Dimensions:** 5'-0" (height) x 3" (width on each side).
- Sign Panel Material:** (3/4" Water Proof Plywood)
- Support Structure:** 2" x 4" Braces, 2" x 4" (vertical supports), 2" x 6" (horizontal base), and 2" x 3" Pegs.
- Clearance:** 3'-6" Min. (height) and 3" (width) for the sign panel.

The diagram illustrates the layout and dimensions of a highway sign. The sign is divided into three horizontal sections. The top section has a white legend on a blue background. The middle section has a white background with black text. The bottom section has a black legend on a yellow background. The sign is 8'-0" wide and 4'-0" high. The dimensions of the sections are: Top section: 8'-0" wide, 1'-0" high. Middle section: 8'-0" wide, 1'-0" high. Bottom section: 8'-0" wide, 1'-0" high. The text in the middle section is: "FOR YOUR FUTURE DRIVING CONVENIENCE" (top line), "*" (middle), "UNDER CONSTRUCTION" (bottom line). The text in the bottom section is: "DRIVE CAREFULLY". The text in the top section is: "WHITE LEGEND ON BLUE BACKGROUND". The text in the bottom section is: "BLACK LEGEND ON YELLOW BACKGROUND". The text in the middle section is: "USE SERIES 'D' LETTERS".

8'-0"

WHITE LEGEND ON BLUE BACKGROUND

4'-0"

1'-0"

3-1/2"

5"

2"

1"

4"

17"

5"

3"

5"

3"

FOR YOUR FUTURE
DRIVING CONVENIENCE

*

UNDER CONSTRUCTION

JOHN A. BURNS
GOVERNOR

Fujio Matsuda
Director of Transportation

DRIVE CAREFULLY

BLACK LEGEND ON YELLOW BACKGROUND

USE SERIES "D" LETTERS

Diagram illustrating the temporary shoring system for a wall, showing the following components and dimensions:

- Sign Panel:** 3/4" Water Proof Plywood
- Bracing:** 2-2" x 4" Braces and 2" x 4" Braces
- Supports:** Sand Bags as directed by the Engineer
- Dimensions:**
 - 45° angle for the bracing
 - 3'-0" Min. distance from the wall to the bracing base
 - 3'-0" Min. distance from the bracing base to the existing ground or pavement
- Ground:** Existing Ground or Pavement

1. The sign panels will be constructed by the State and will be available for pick up by the Contractor from the State Highway Maintenance Yard.
2. The Contractor shall construct the sign supports and frames and install the sign panels at the locations shown on the plans and as ordered by the Engineer.
3. At the end of construction the Contractor shall remove the sign panels and return it to the State Highway Maintenance Yard. Sign supports and frames shall be removed and cleared from the project site.

[illegible]

(SIGN SUPPORT AND FRAME ANCHORED IN GROUND)
Scale: 1/2" = 1'-0"

* Sign 1
TRAFFIC SIGNALS ON FARRINGTON HWY.
AT WAIAWA ACCESS RD.

Sign 2
TRAFFIC SIGNALS ON FARRINGTON HWY.
AT WAIPIO POINT ACCESS RD.

PROJECT INFORMATION SIGN

Scale: As Shown

SHEET No. 5 OF 5 SHEETS

ORIGINAL PLAN	SURVEY PLOTTED BY _____ DRAWN BY _____ TRACED BY _____ DESIGNED BY _____ QUANTITIES BY _____ CHECKED BY _____	DATE _____
NOTE BOOK		