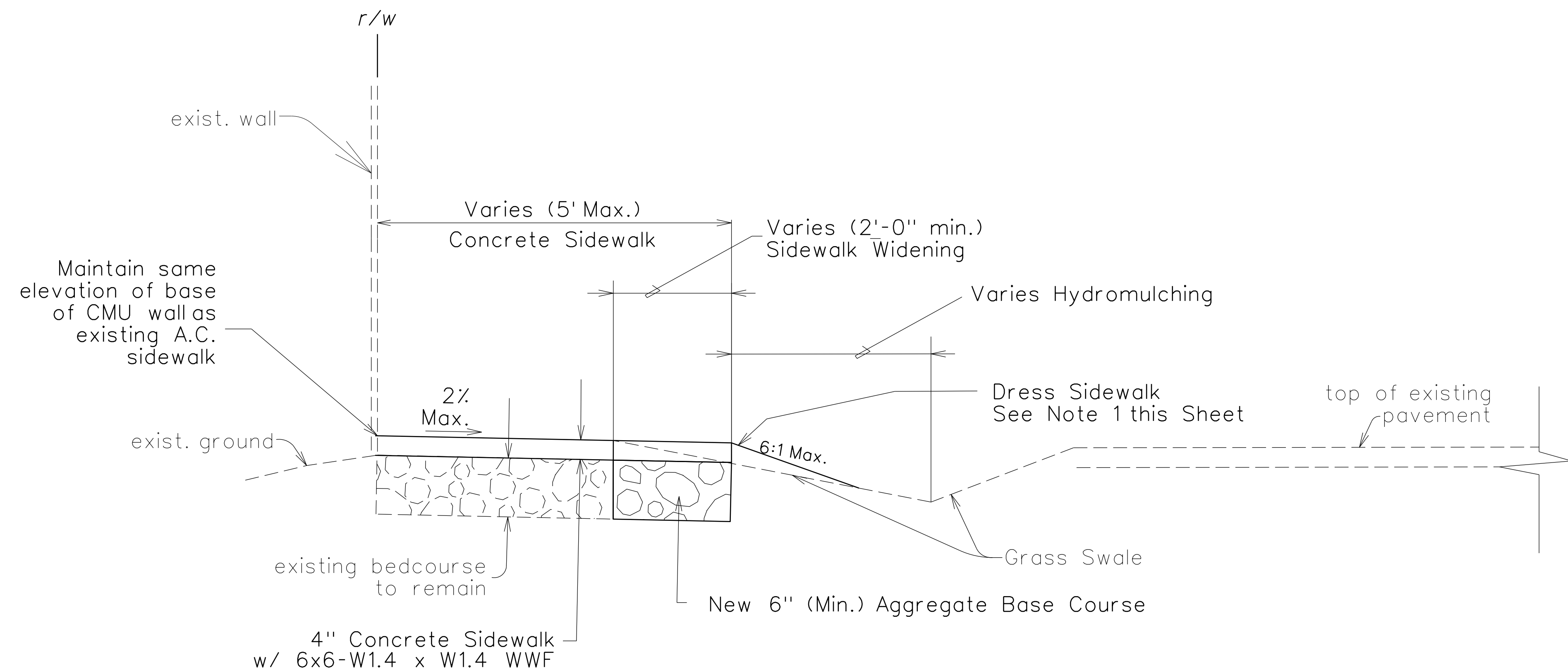
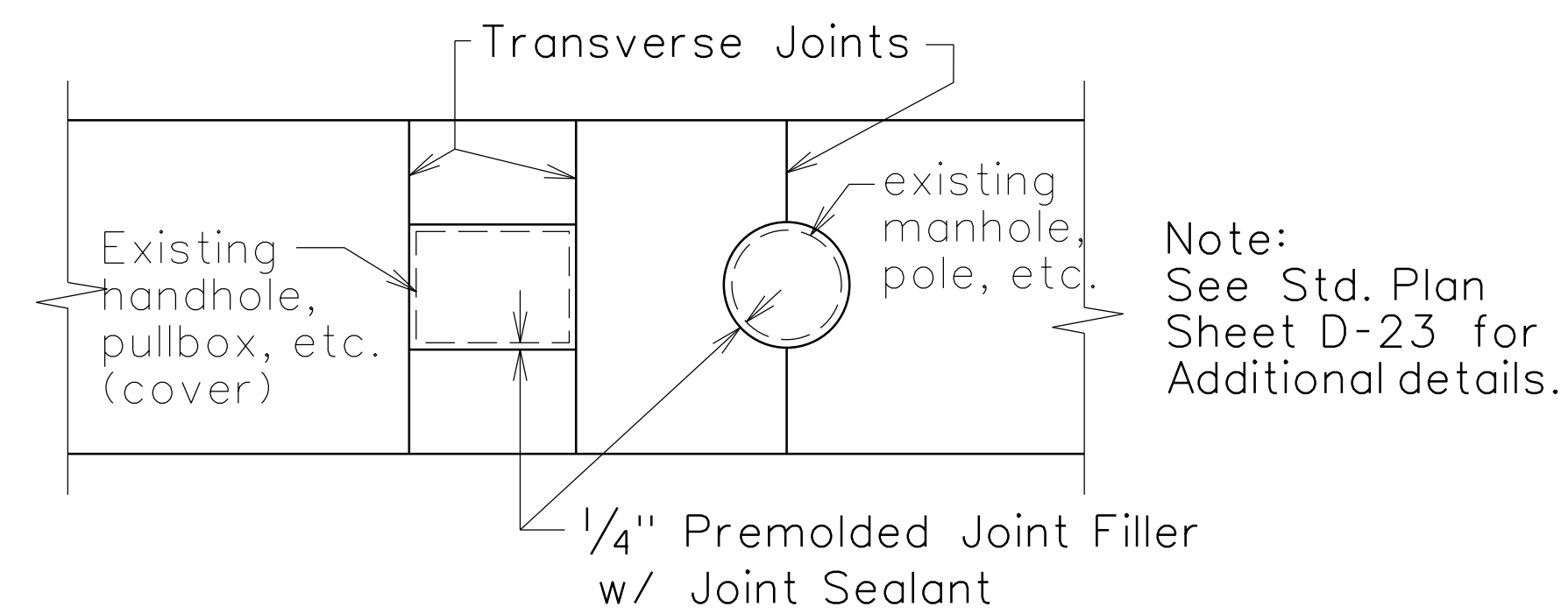


FED. ROAD DIST. NO.	STATE	PROJ. NO.	FISCAL YEAR	SHEET NO.	TOTAL SHEETS
HAWAII	HAW.	7012A-01-21	2022	13	14



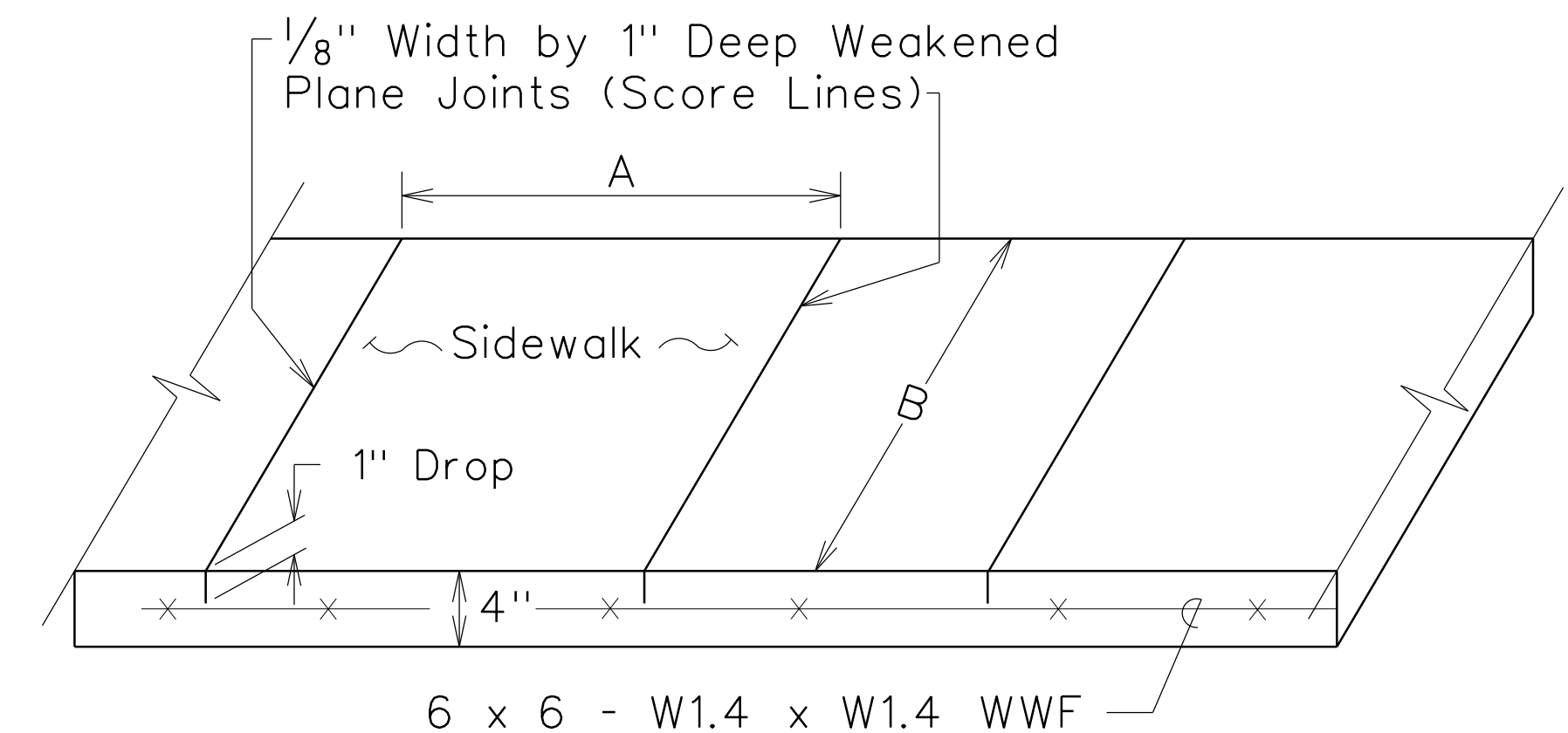
TYPICAL SIDEWALK CROSS SECTION



SIDEWALK ISOLATION JOINT DETAIL

NOTES:

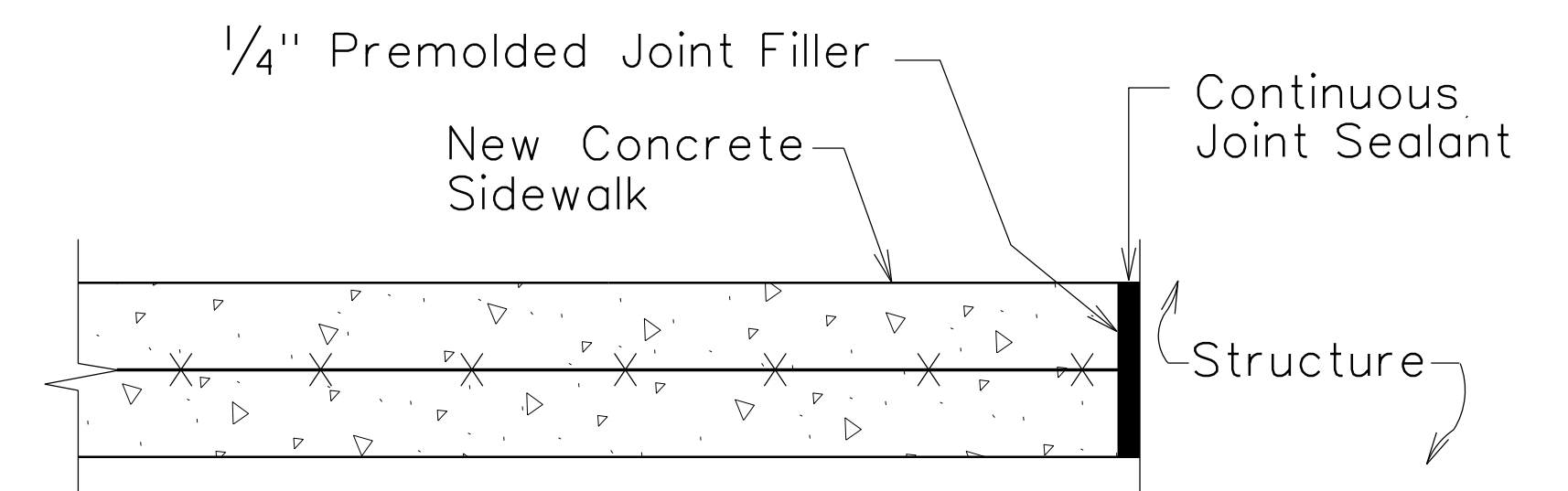
1. Dressing of sidewalk shall consist of clearing, grubbing, grading, reshaping and compacting the area adjacent to the improvement with suitable material as shown on the plans and/or as directed by the Engineer. If existing ground is asphalt or concrete surface, dress sidewalk with A.C. pavement, Mix No. V. If existing ground is dirt or grass, dress sidewalk with hydro-mulch. This work shall be considered incidental to the new sidewalk.
2. Transverse and longitudinal weakened plane joints for sidewalk shall be considered incidental to the new sidewalk.
3. Installation of dowels and tie bars, including drilling and epoxy grout, shall be incidental to Sidewalk.
4. Concrete shall be Class "A".
5. Only flat sheets of welded wire fabric reinforcement shall be used. No rolled welded wire fabric reinforcement will be allowed.



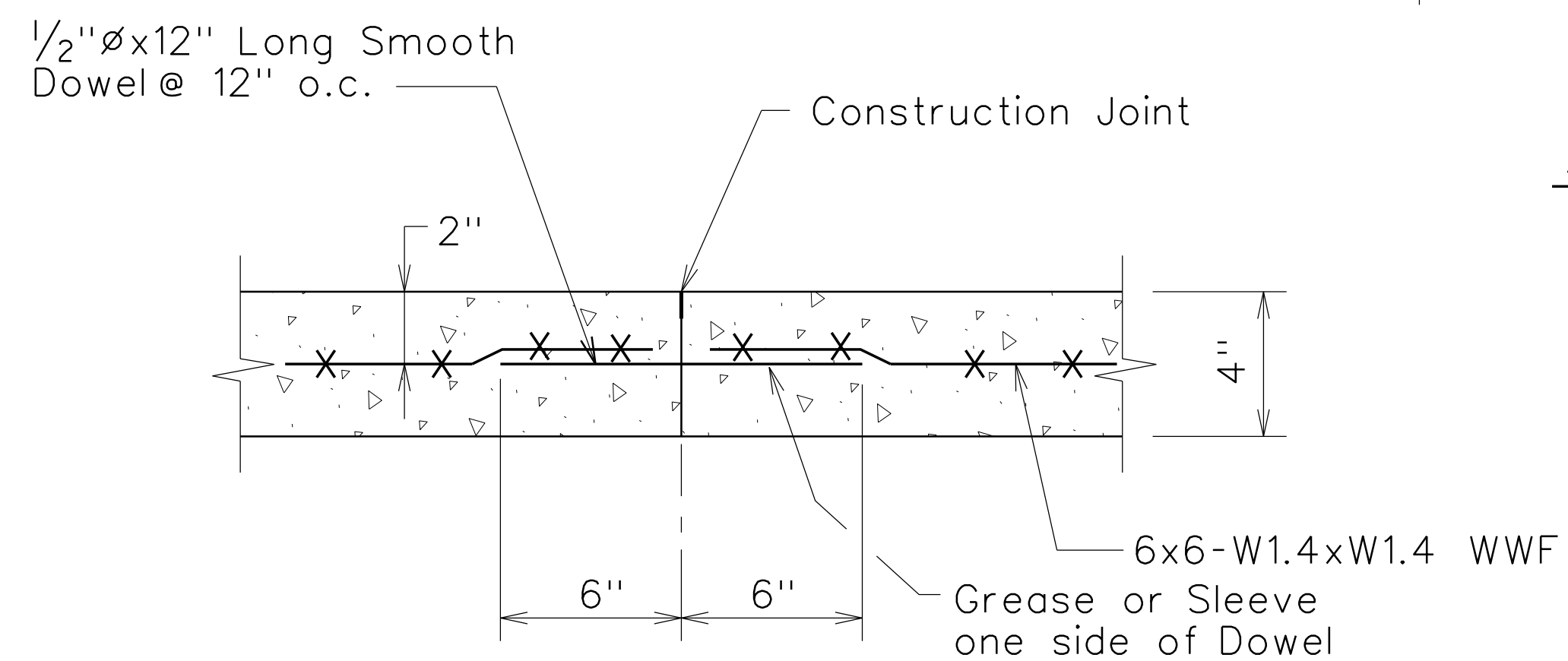
Notes:

1. Joint Dimensions: (B/A or A/B) < 1.25 and (A or B) not to exceed 7'-0"
2. Longitudinal Joints shall be similar to Transverse Joints.
3. Special Design to used where A or B > 7'-0"

SIDEWALK CONTRACTION JOINT DETAIL



TRANSVERSE JOINT AT STRUCTURE DETAIL



TRANSVERSE CONSTRUCTION JOINT DETAIL

STATE OF HAWAII
DEPARTMENT OF TRANSPORTATION
HIGHWAYS DIVISION

TYPICAL SECTIONS & DETAILS

WHITMORE AVENUE SIDEWALK IMPROVEMENTS
Ukanikoo Street to Ihiihi Avenue
Project No. 7012A-01-21

Scale: Not to Scale Date: October, 2021

SHEET No. 1 OF 1 SHEETS