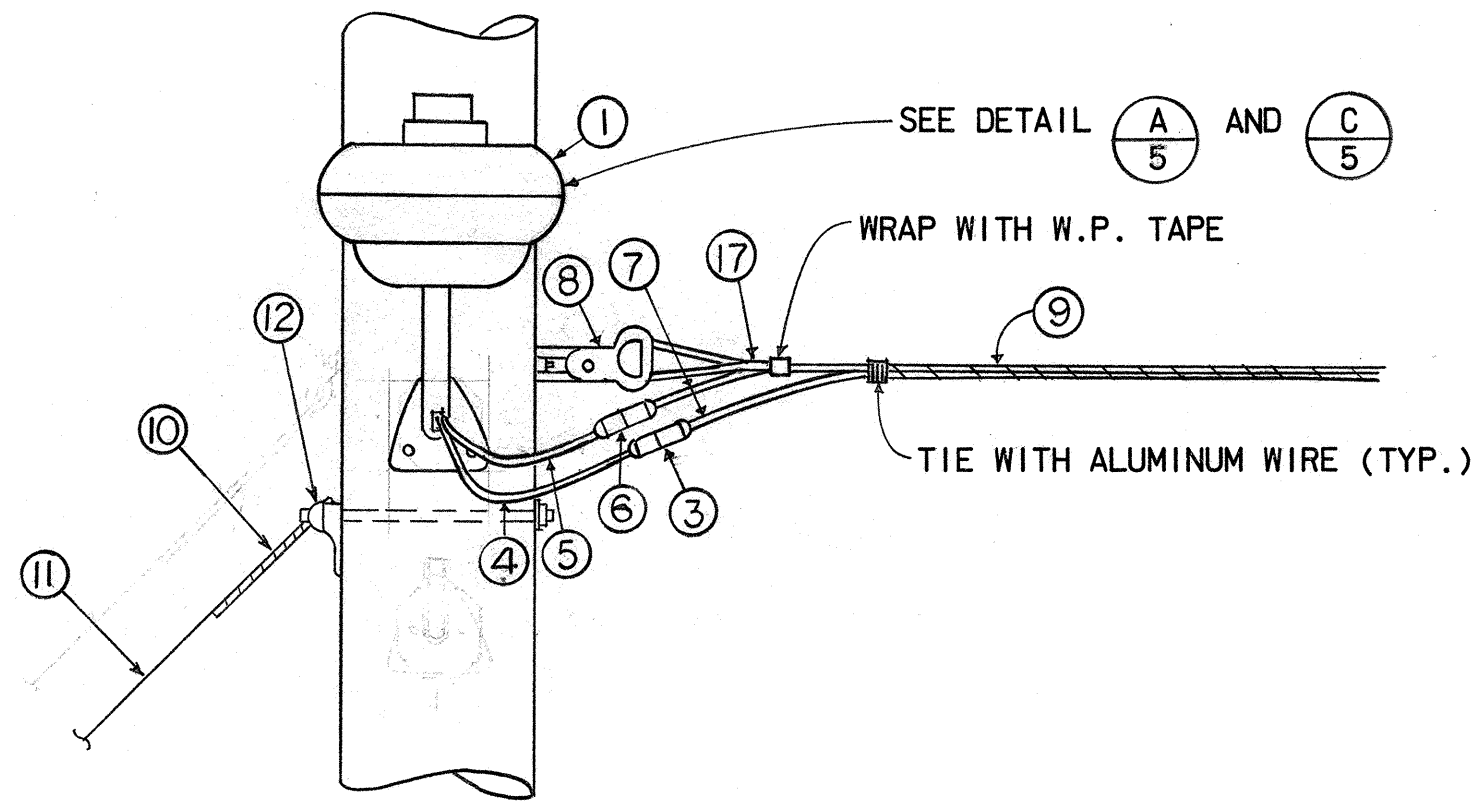
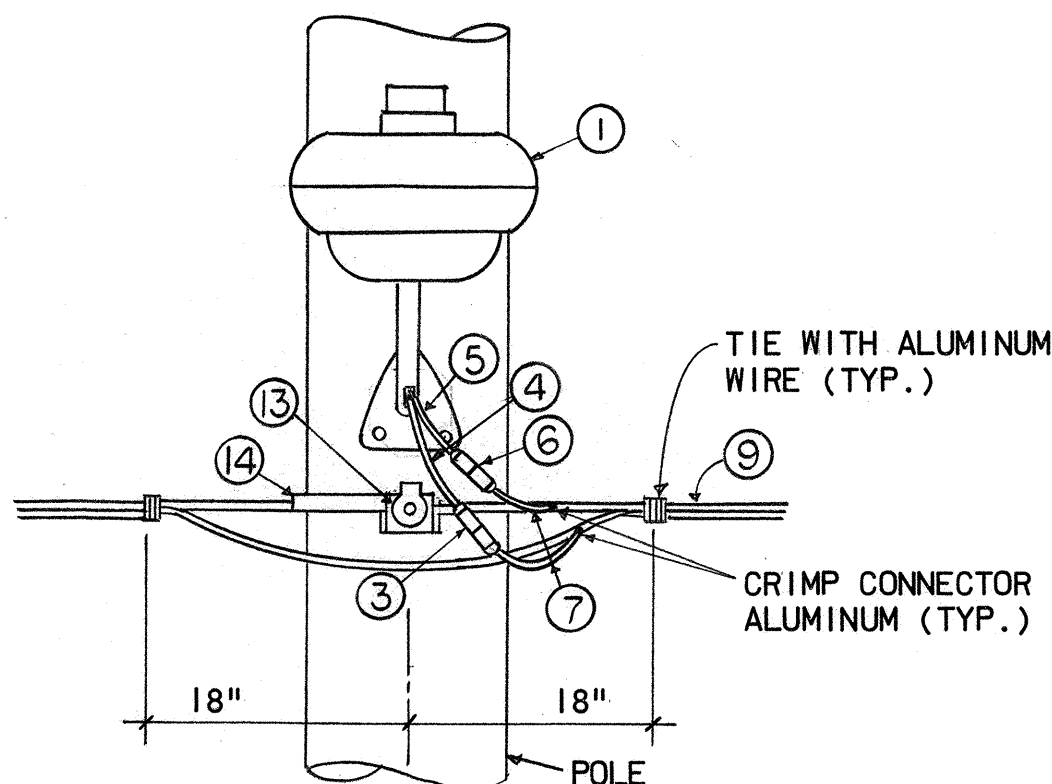


FED. ROAD DIST. NO.	STATE	FED. AID PROJ. NO.	FISCAL YEAR	SHEET NO.	TOTAL SHEETS
HAWAII	HAW.	930D-01-78	1977	4	5



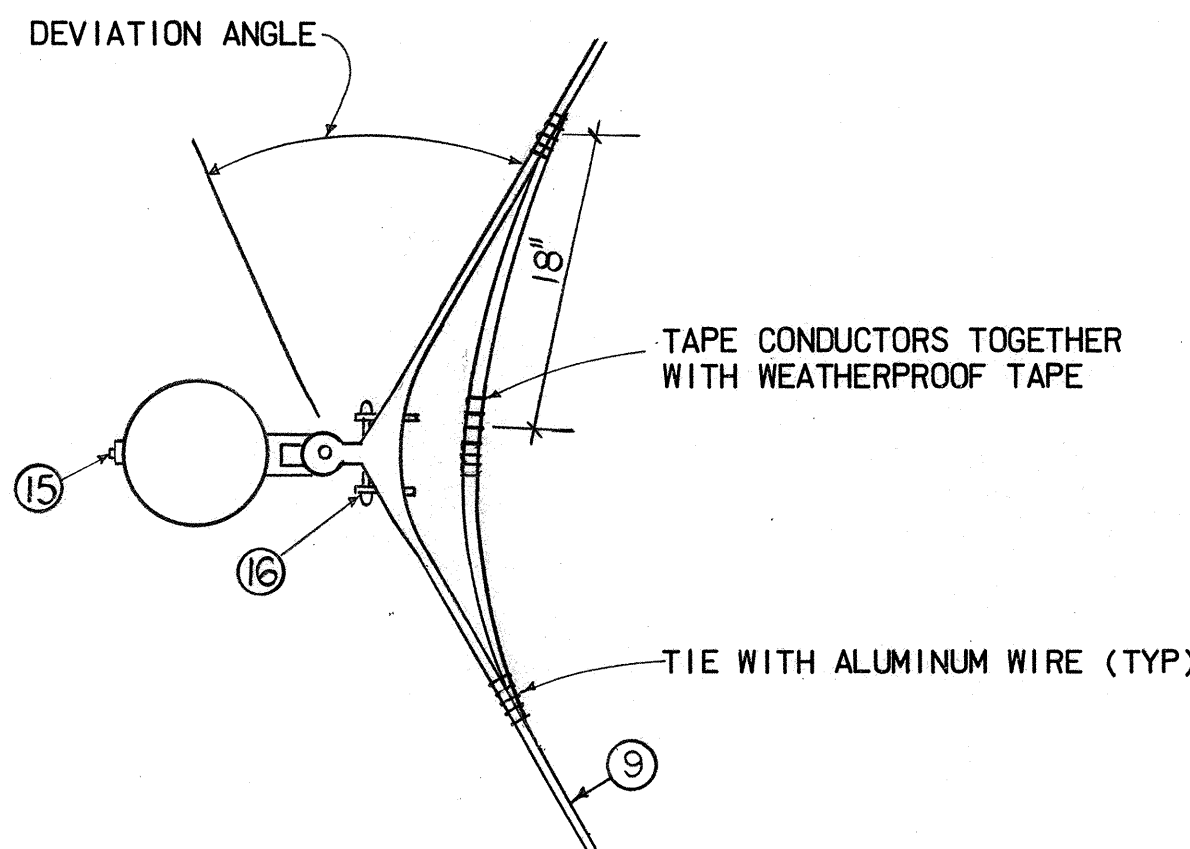
DEADEND POLE

A  
4  
DETAIL  
N.T.S.



THRU POLE

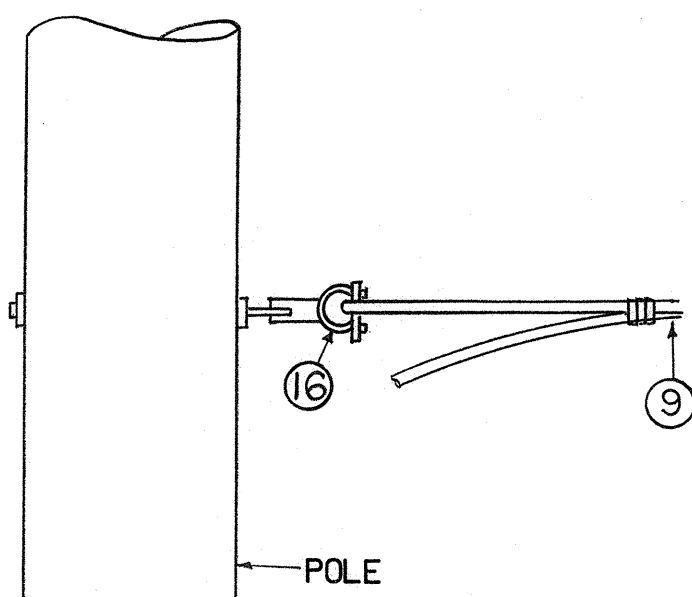
B  
4  
DETAIL  
N.T.S.



PLAN

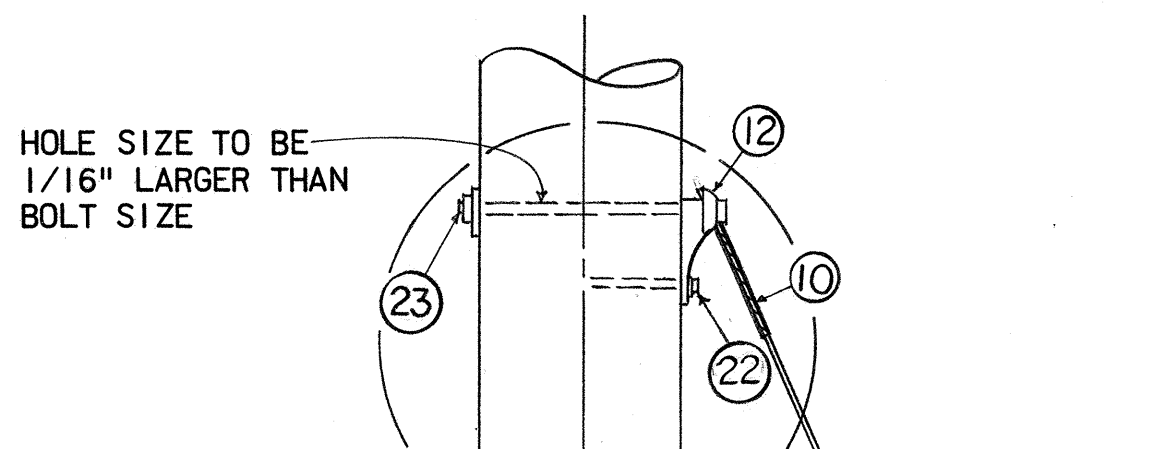
DEVIATION ANGLE 10° - 30°  
ANGLE POLE

C  
4  
DETAIL  
N.T.S.

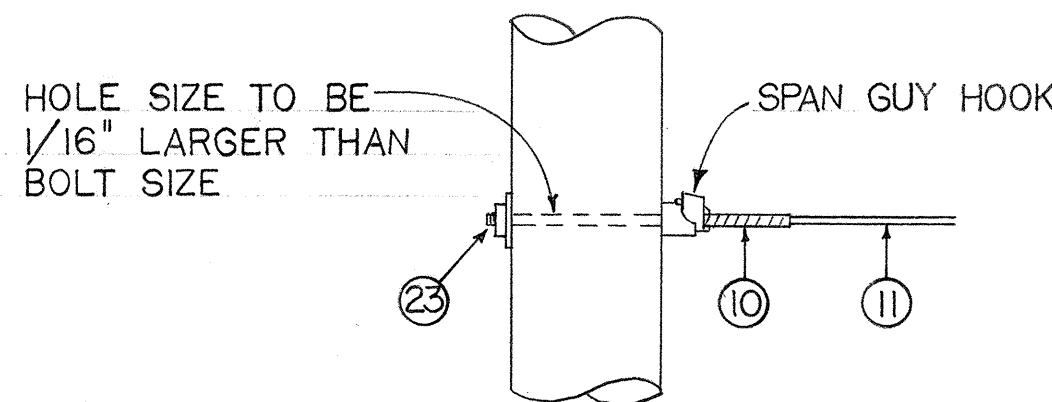


ELEVATION

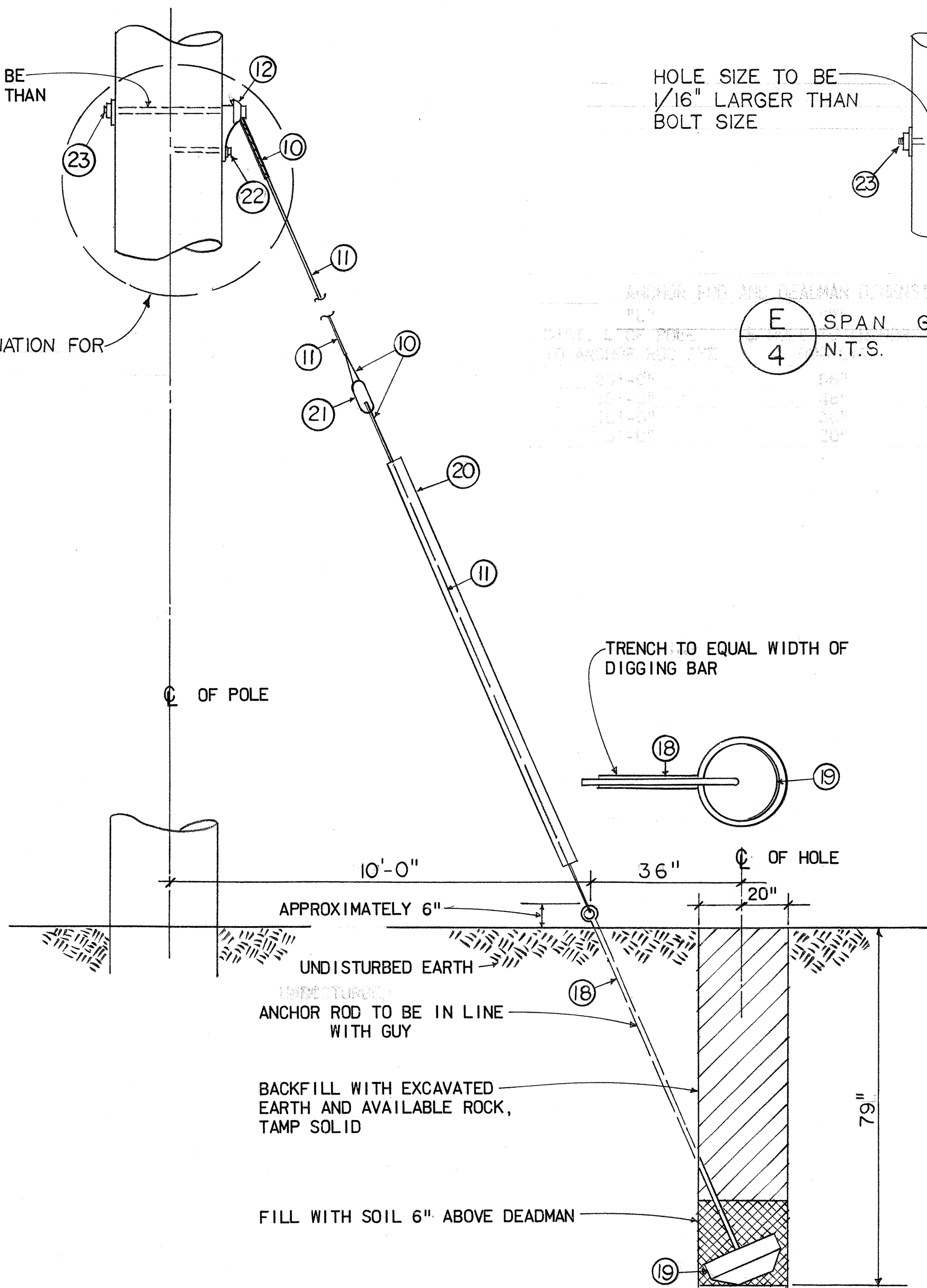
NOTE:  
FOR MATERIAL IDENTIFICATION SEE LIST  
OF MATERIALS ON SHEET 5.



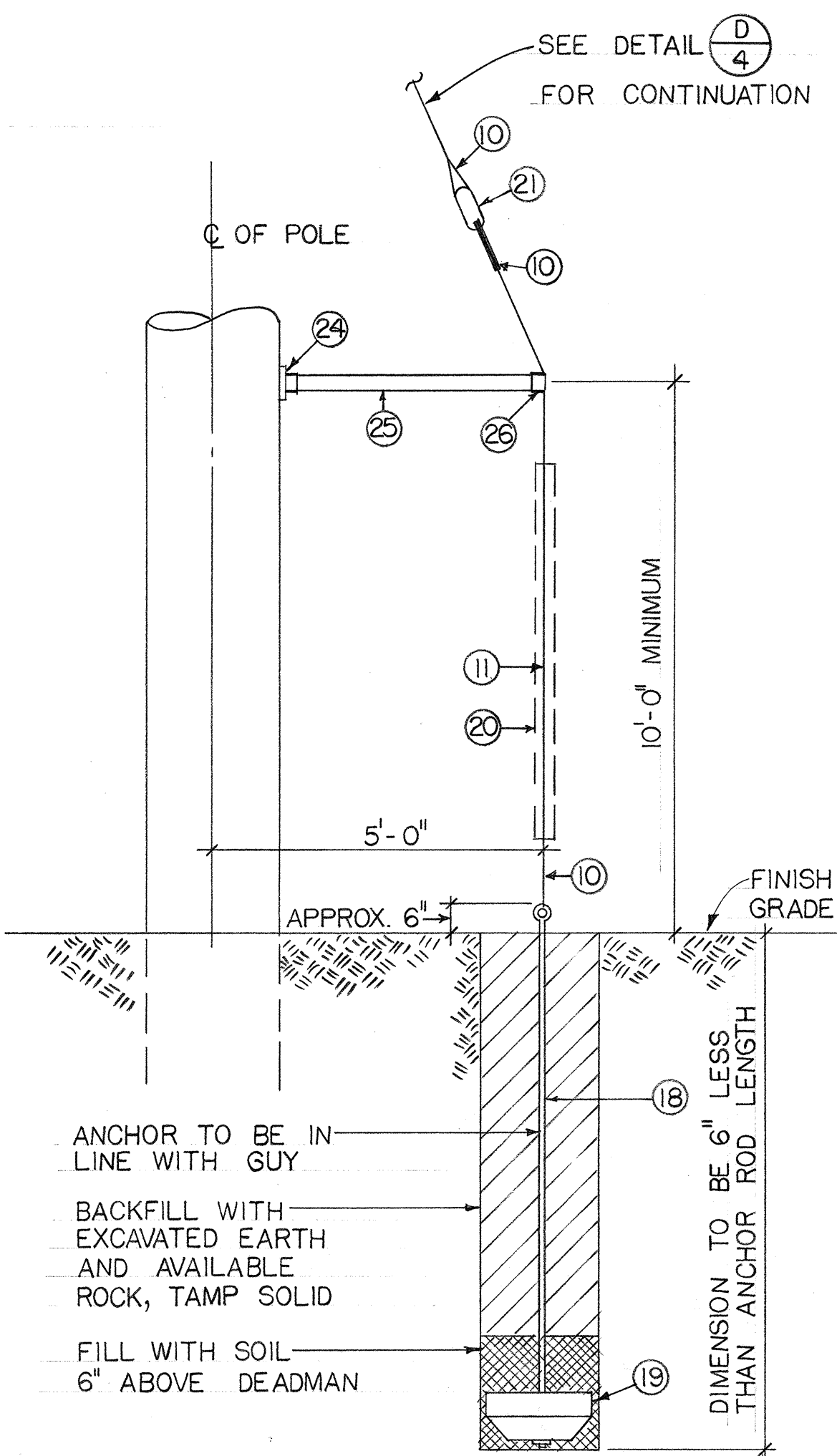
SIMILAR TERMINATION FOR  
SIDEWALK GUY



E  
4  
SPAN GUY DETAIL  
N.T.S.



D  
4  
GUY DETAILS  
N.T.S.



F  
4  
SIDEWALK GUY DETAILS  
N.T.S.



THIS WORK WAS PREPARED BY ME  
OR UNDER MY SUPERVISION

Albert S. C. Chong

STATE OF HAWAII  
DEPARTMENT OF TRANSPORTATION  
HIGHWAYS DIVISION

KAUKONAHUA ROAD,

STREET LIGHTS,

THOMPSON CORNER TO WEED JUNCTION

PROJECT NO. 930D-01-78

MISCELLANEOUS DETAILS

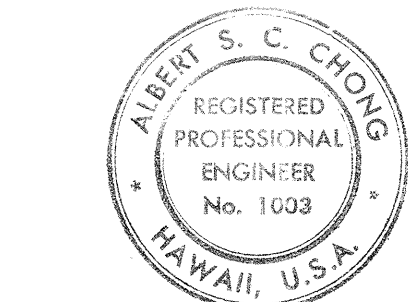
SHEET No. 4 OF 5 SHEETS

FED. ROAD DIST. NO.	STATE	FED. AID PROJ. NO.	FISCAL YEAR	SHEET NO.	TOTAL SHEETS
HAWAII	HAW.	930D-01-78	1977	5	5

LIST OF MATERIALS

ITEM NO.	DESCRIPTION
1	LUMINAIRE, HIGH PRESSURE SODIUM, 150W, AS INDICATED, TYPE 11 WITH PHOTO-ELECTRIC CONTROL AND MAST ARM.
2	CONDUIT, 3/4" PVC SCHEDULE 80 AND STRAPS.
3	IN LINE FUSE HOLDER WITH 10A FUSE.
4	WIRE, NO. 10 AWG STRANDED COPPER, TYPE RHW BLACK.
5	WIRE, NO. 10 AWG STRANDED COPPER, TYPE RHW WHITE.
6	IN LINE UNFUSED, INSULATED SEPARABLE CONNECTOR.
7	WIRE NO. 8 AND 7-STRAND ALUMINUM, TYPE RHW.
8	THIMBLE CLEVIS, ALUMINUM ALLOY WITH ALUMINUM, ALLOY EYELET.
9	WIRES, 2 NO. 1/0 CROSS-LINKED POLYETHYLENE ALUMINUM WITH NO. 3/0 AAAC NEUTRAL MESSENGER.
10	PREFORMED GUY GRIP.
11	GUY WIRE, 3/8" EHS, GALVANIZED.
12	ANCHOR GUY HOOK WITH 3/4" DIAMETER THRU BOLT AND 2-1/4" SQUARE WASHER.
13	MESSENGER HANGER, CAST ALUMINUM WITH 5/8" ALUMINUM ALLOY THRU BOLT AND 2-1/4" ALUMINUM ALLOY SQUARE WASHER.
14	ALUMINUM SHEET WRAP (AROUND MESSENGER).
15	5/8" ALUMINUM ALLOY THRU BOLT WITH 2-1/2" SQUARE ALUMINUM ALLOY CURVED WASHER, LENGTH AS REQUIRED.
16	ALUMINUM ALLOY SUSPENSION CLAMPS WITH LINE GUARD AND ALUMINUM ALLOY EYELET.
17	ALUMINUM ALLOY PREFORMED DEADEND.
18	ANCHOR ROD, 5/8" x 8' GALVANIZED.
19	CONCRETE DEADMAN, 18" DIAMETER WITH GALVANIZED SQUARE WASHER.
20	GUY WIRE GUARD, YELLOW HIGH IMPACT PVC PLASTIC, 6' LONG, FULL ROUND.
21	INSULATOR, PORCELAIN.
22	LAG SCREW.
23	5/8" GALVANIZED THRU BOLT WITH 2-1/2" SQUARE GALVANIZED WASHER AND NUT, LENGTH AS REQUIRED.
24	POLE PLATE W/4-1/2" x 4" LAG SCREWS.
25	2" GALVANIZED STEEL PIPE.
26	END FITTING.

- NOTES:
- ALL HARDWARE, UNLESS INDICATED AS ALUMINUM OR ALUMINUM ALLOY SHALL BE HOT DIPPED GALVANIZED STEEL.
  - PROVIDE IDENTIFICATION TAG ON ALL POLES.

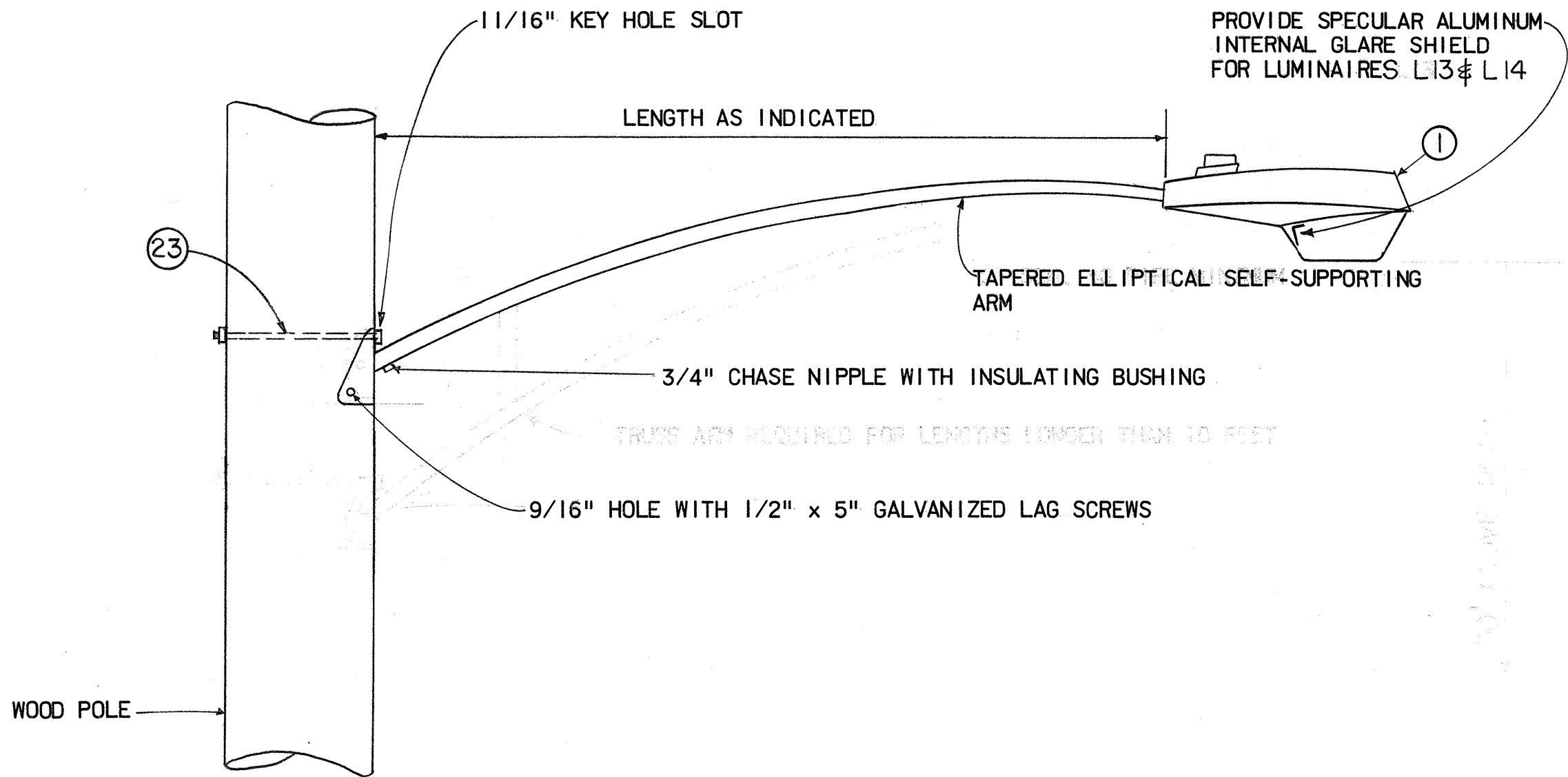


THIS WORK WAS PREPARED BY ME  
OR UNDER MY SUPERVISION  
*Albert S. C. Chong*  
Albert S. C. Chong, PE

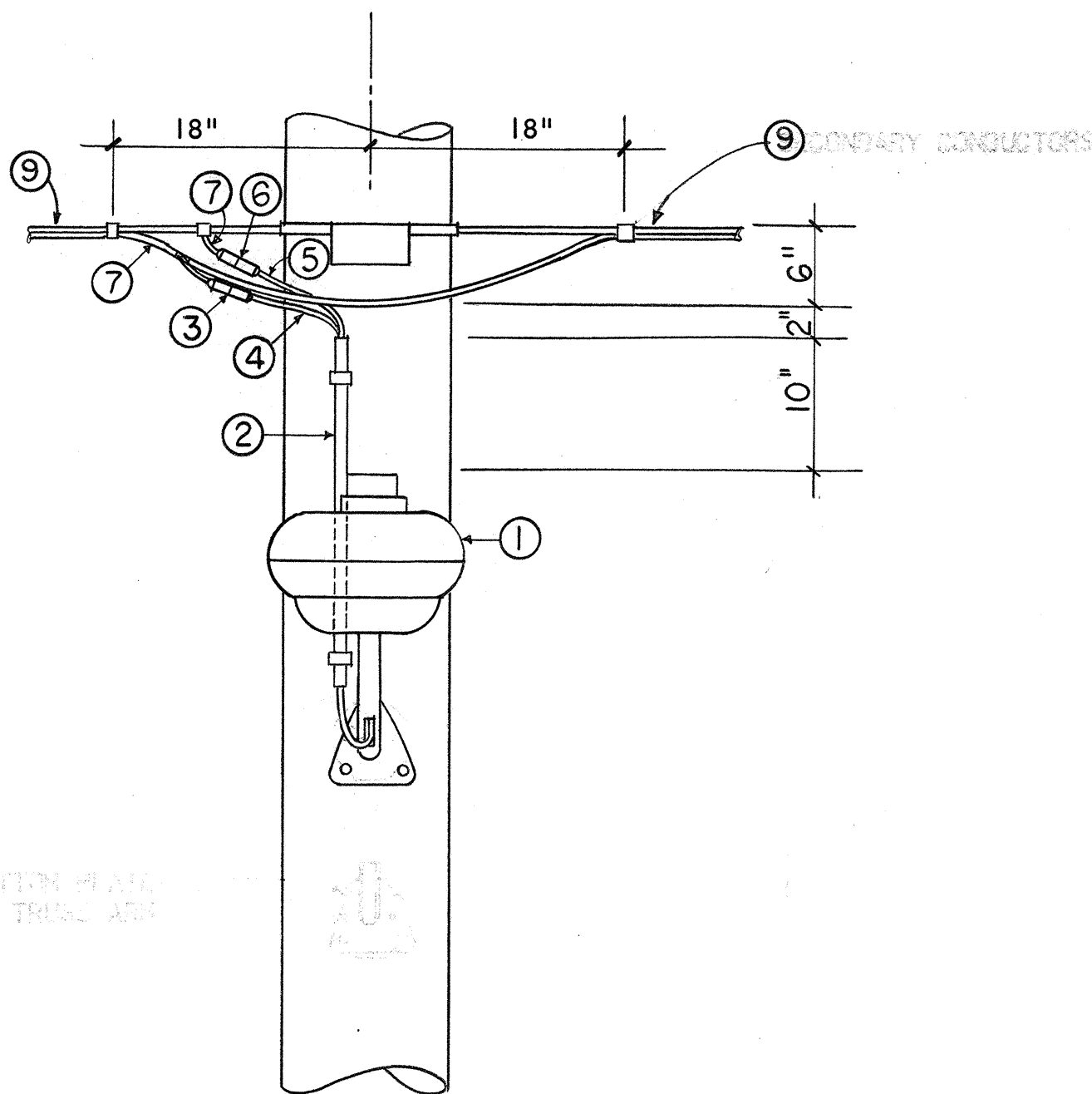
STATE OF HAWAII  
DEPARTMENT OF TRANSPORTATION  
HIGHWAYS DIVISION

KAILUA-KONA ROAD,  
STREET LIGHTS,  
THOMPSON CORNER TO WEED JUNCTION  
PROJECT NO. 930D-01-78  
MISCELLANEOUS DETAILS

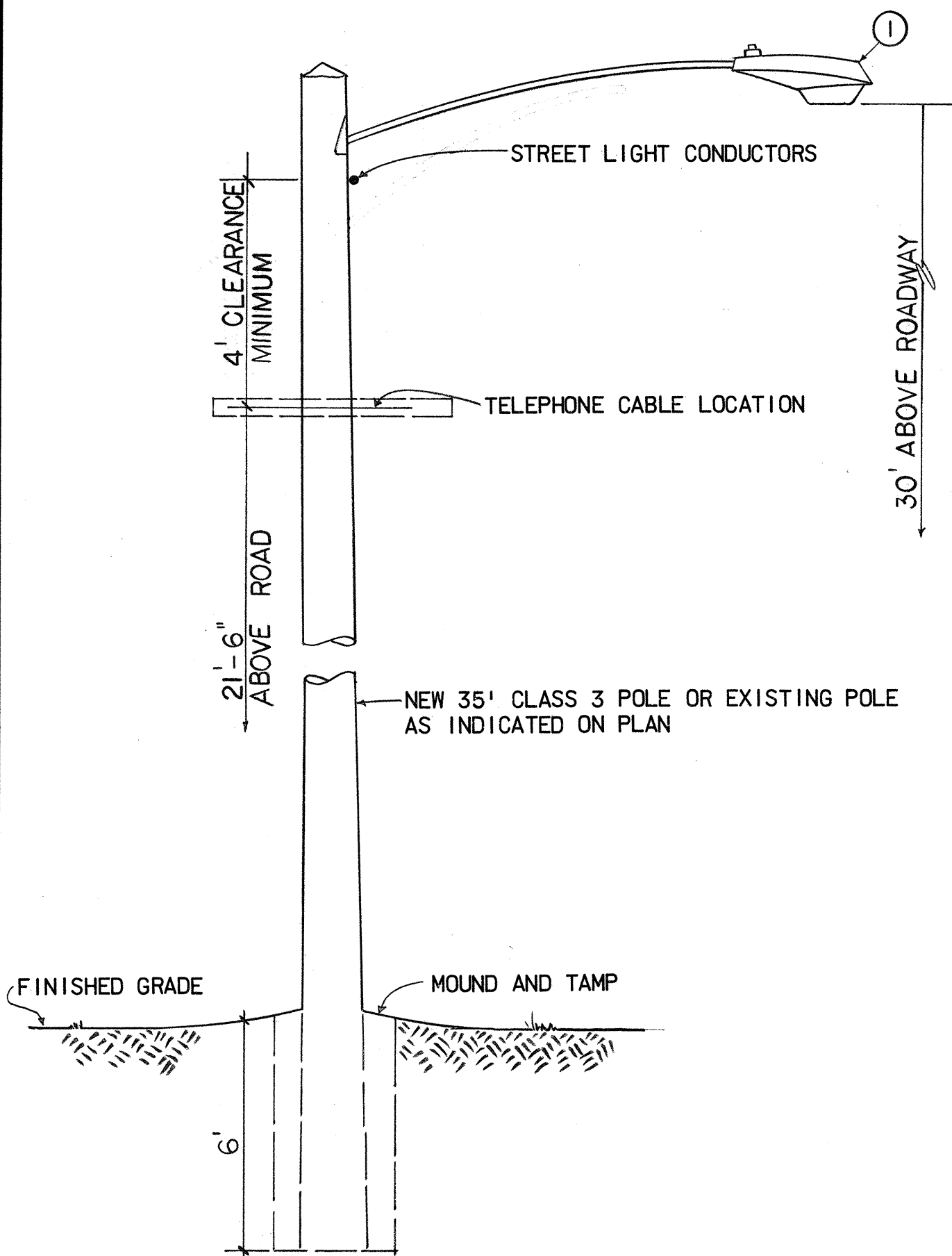
SHEET No. 5 OF 5 SHEETS



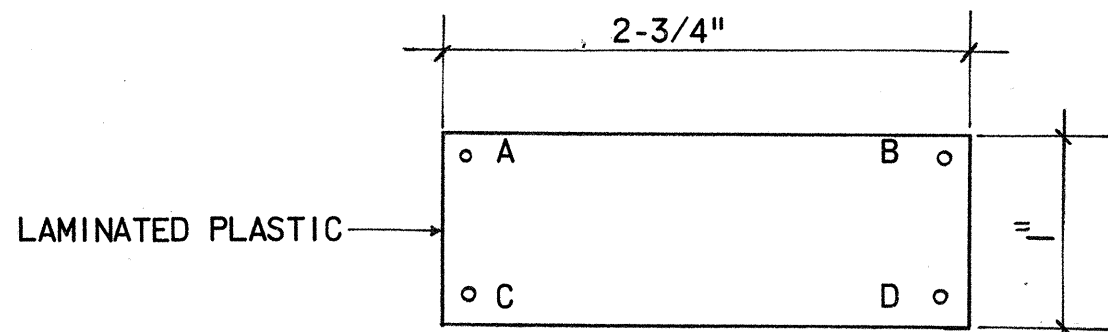
A  
5  
DETAIL  
N.T.S.



B  
5  
DETAIL  
N.T.S.



C  
5  
DETAIL  
N.T.S.



- A = CONTRACT NO. (OBTAIN FROM STATE OR HECO)  
B = LT. NO. FROM STATE  
C = N150  
D = 11 (IES TYPE DISTRIBUTION)
- ATTACH TAG TO POLE WITH 4D ALUMINUM NAILS AT 6" ABOVE GRADE.
  - LETTERS TO BE NO. 5 REDUCTION, 1/5" ENGRAVED OR STENCILED.

D  
5  
IDENTIFICATION TAG  
N.T.S.

SURVEY PLOTTED BY	DATE
DRAWN BY	
DESIGNED BY	
CHECKED BY	
ORIGINAL PLAN	
NOTE BOOK	
No.	