

FED. ROAD DIST. NO.	STATE	FEDERAL AID PROJ. NO.	FISCAL YEAR	SHEET NO.	TOTAL SHEETS
HAWAII	HAW.	HSIP-RR-090(017)	2023	25	117

SYMBOL	CONDUIT	CABLE
①	2"	See Sheet E-4 for Fiber Optic Interconnect 1 3-Cell Fabric Duct
	2" (Spare)	1 3-Cell Fabric Duct (For Future Use)
	4-2" (Spare)	For Future Use
	2-2"	Lighting
	3-3"	Railroad Gate

NOTES:

- Existing pullboxes are not shown in exact location.
- For Trench Details, see Sht. TS-8.
- Concrete encased ducts shall be 5-Wide x 2-High, according to Standard Plan TE-36.
- The Contractor shall notify the City & County of Honolulu, Department of Transportation Services, Traffic Signals and Technology Division, (808) 768-8387, at least three (3) working days prior to commencing work on the traffic signal system.
- The Contractor shall tone and locate existing HECO 15KV ductline prior to excavating in and adjacent to the HECO 18.5' Easement.

GRAPHIC SCALE



Approved:

Chief, Traffic Review Branch, DPP

Date

Approved:

Chief, Traffic Signals & Technology Division, DTS

Date

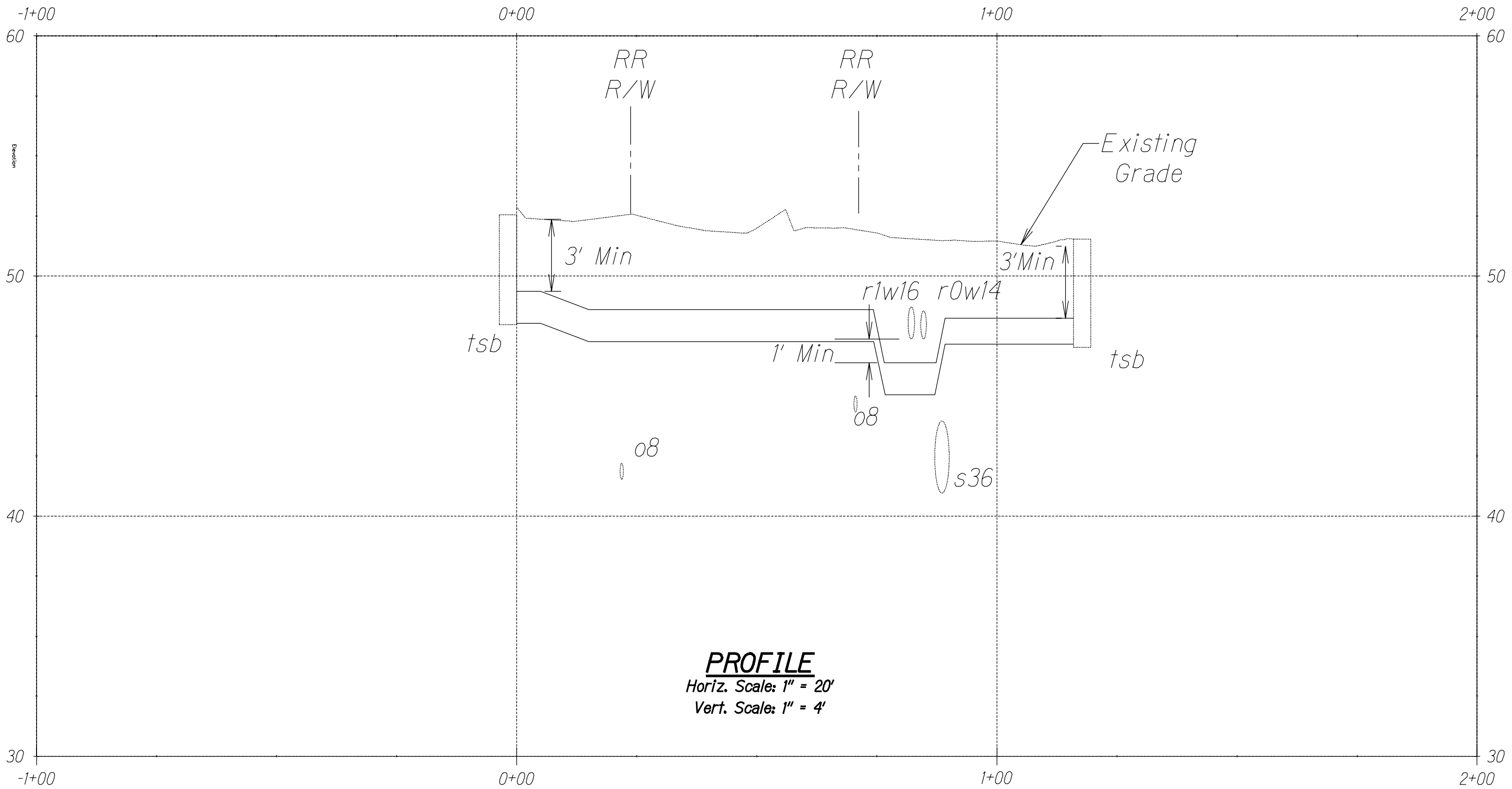
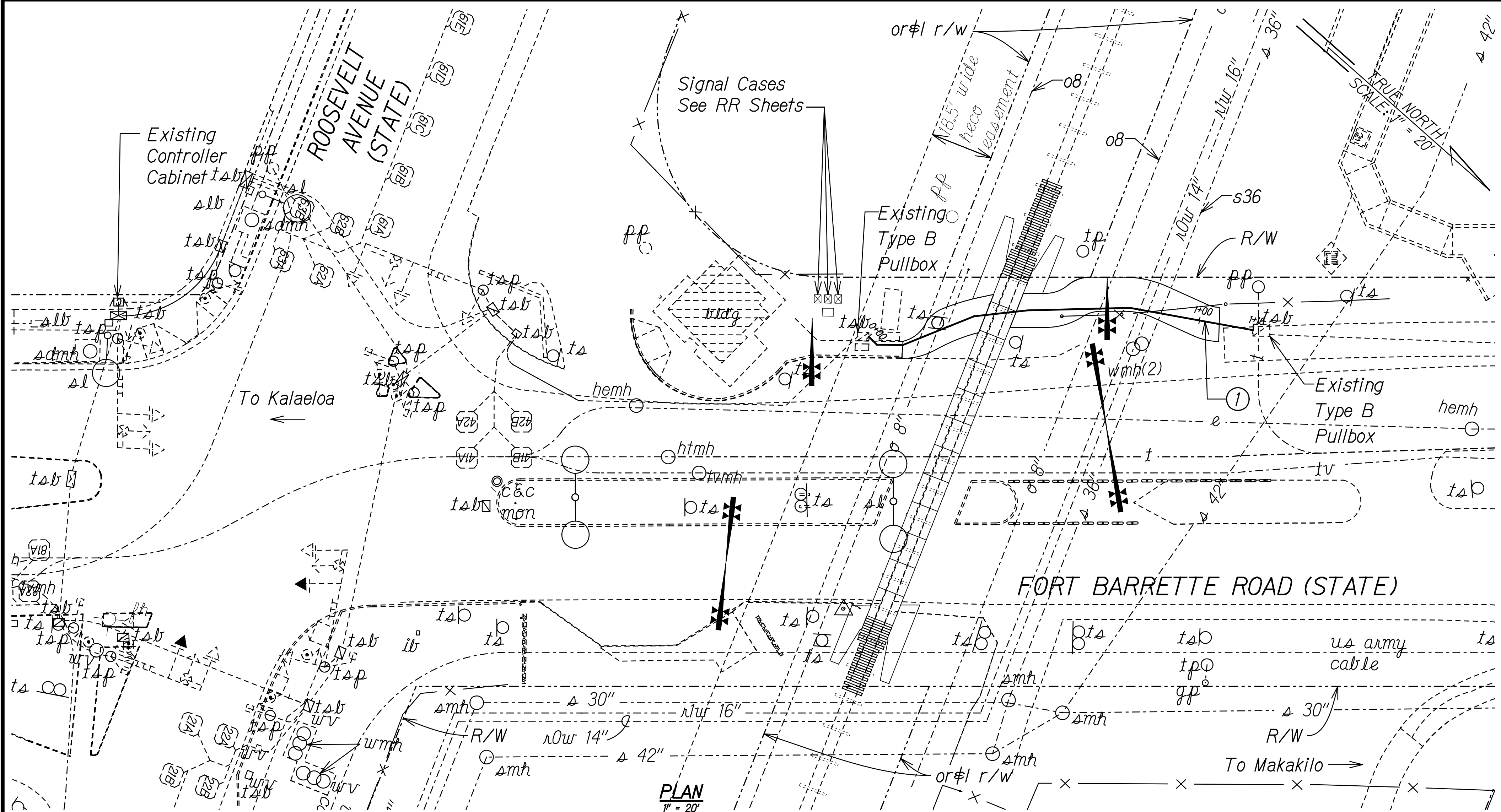
Approved:

Manager and Chief Engineer, BWS
(For Work Affecting BWS Facilities in City/State
Right-of-Way and BWS Easement only)

Date

<p>THIS WORK WAS PREPARED BY ME OR UNDER MY SUPERVISION. Signature: <i>Darin N. Chinen</i> EXPIRATION DATE OF THE LICENSE: 06/30/24</p>	<p>STATE OF HAWAII DEPARTMENT OF TRANSPORTATION HIGHWAYS DIVISION TRAFFIC SIGNAL INTERCONNECT PLAN & PROFILE FORT BARRETTE ROAD RAILROAD CROSSING & LIGHTING IMPROVEMENTS Roosevelt Avenue to Farrington Highway Federal-Aid Project No. HSIP-RR-090(017) Scale: As Shown Date: June 2023</p>
---	---

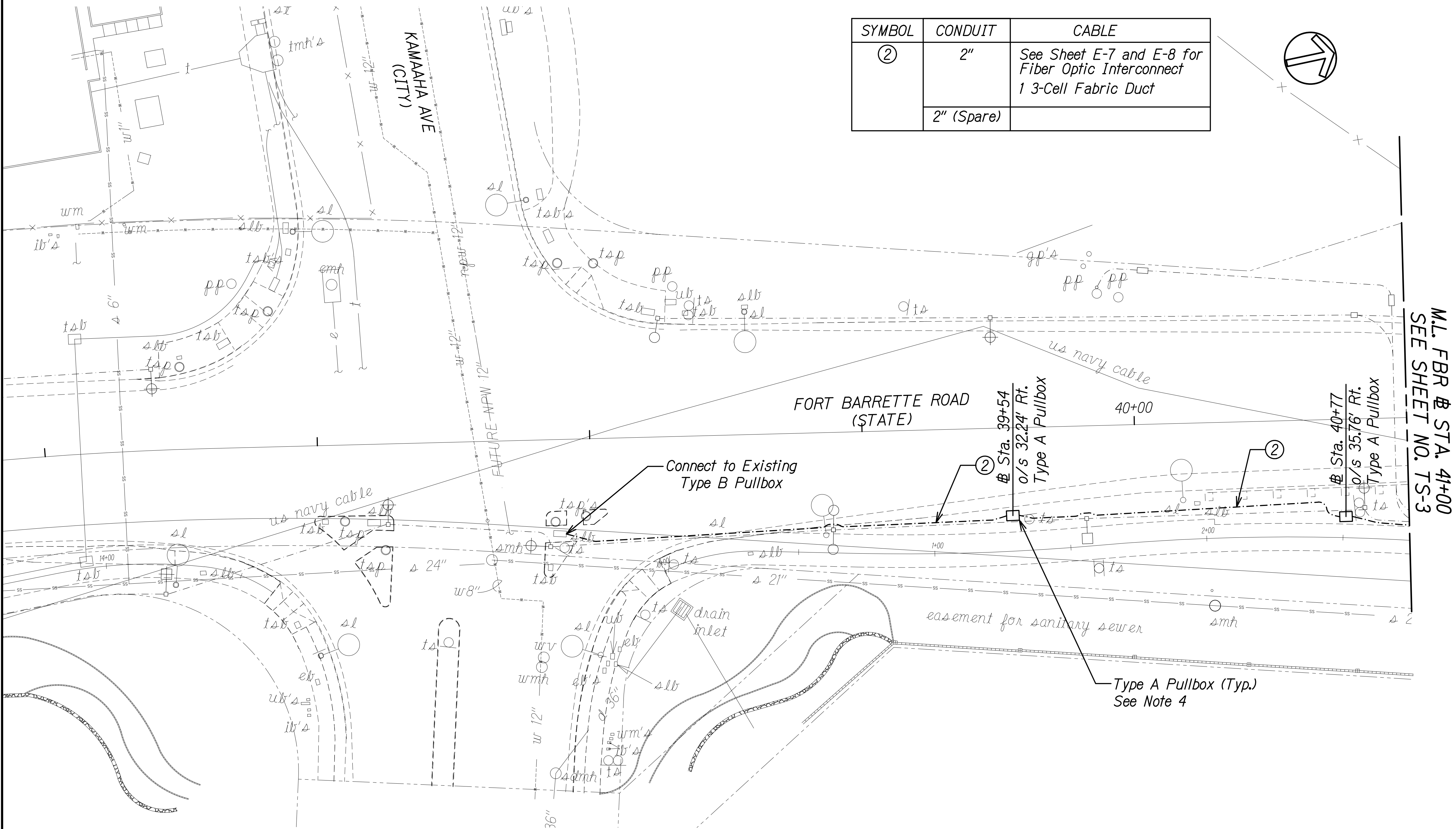
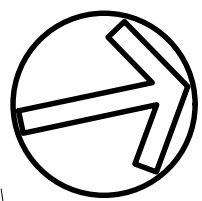
SHEET No. TS-1 OF 8 SHEETS



DATE	
SURVEY PLOTTED BY	
DRAWN BY	
TRACED BY	
DESIGNED BY	
QUANTITIES BY	
CHECKED BY	
NOTE BOOK	
No.	

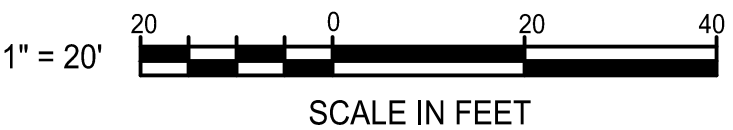
FED. ROAD DIST. NO.	STATE	FEDERAL AID PROJ. NO.	FISCAL YEAR	SHEET NO.	TOTAL SHEETS
HAWAII	HAW.	HSIP-RR-090(017)	2023	26	117

SYMBOL	CONDUIT	CABLE
②	2"	See Sheet E-7 and E-8 for Fiber Optic Interconnect 1 3-Cell Fabric Duct
	2" (Spare)	



M.L. FBR @ STA. 41+00
SEE SHEET NO. TS-3

GRAPHIC SCALE



NOTES:

- For Trench Details, see Sht. No. TS-8.
- Concrete encased ducts shall be 2-Wide x 1-High, according to Standard Plan TE-36.
- The Contractor shall notify the City & County of Honolulu, Department of Transportation Services, Traffic Signals and Technology Division, (808)768-8387, at least three (3) working days prior to commencing work on the traffic signal system.
- Type "A" pullboxes shall be placed at max. distance of 200' apart.

PLAN

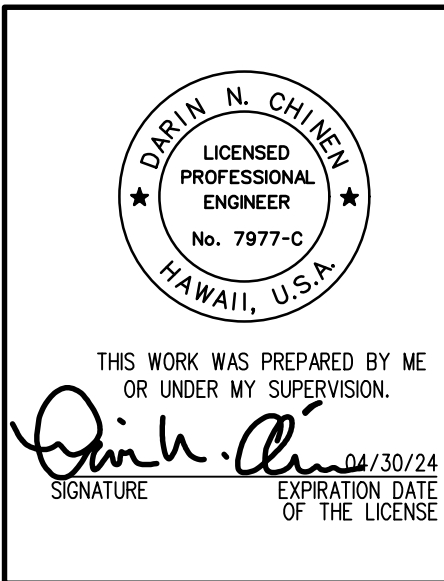
Scale: 1" = 20'

Approved:

Chief, Traffic Signals & Technology Division, DTS Date

Approved:

Chief, Traffic Review Branch, DPP Date



STATE OF HAWAII
DEPARTMENT OF TRANSPORTATION
HIGHWAYS DIVISION

TRAFFIC SIGNAL INTERCONNECT PLAN

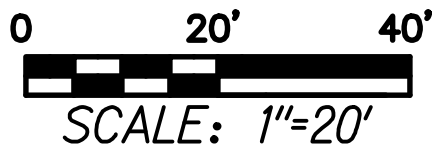
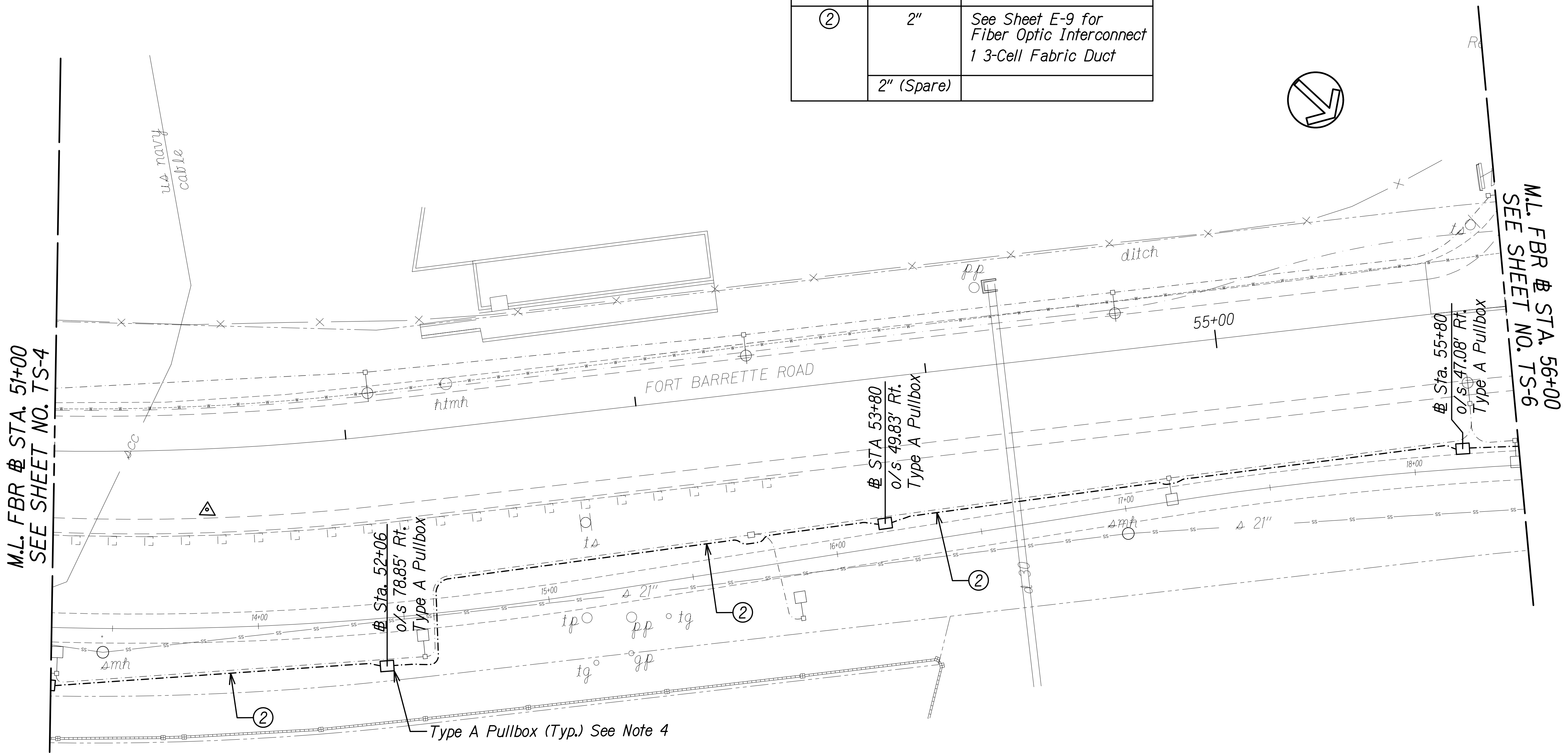
FORT BARRETTE ROAD
RAILROAD CROSSING & LIGHTING IMPROVEMENTS
Roosevelt Avenue to Farrington Highway
Federal-Aid Project No. HSIP-RR-090(017)

Scale: AS NOTED Date: June 2023

SHEET No. TS-2 OF 8 SHEETS

FED. ROAD DIST. NO.	STATE	FEDERAL AID PROJ. NO.	FISCAL YEAR	SHEET NO.	TOTAL SHEETS
HAWAII	HAW.	HSIP-RR-090(017)	2023	29	117

SYMBOL	CONDUIT	CABLE
②	2"	See Sheet E-9 for Fiber Optic Interconnect 1 3-Cell Fabric Duct
	2" (Spare)	



NOTES:

- For Trench Details, see Sht. No. TS-8.
- Concrete encased ducts shall be 2-Wide x 1-High, according to Standard Plan TE-36.
- The Contractor shall notify the City & County of Honolulu, Department of Transportation Services, Traffic Signals and Technology Division, (808)768-8387, at least three (3) working days prior to commencing work on the traffic signal system.
- Type "A" pullboxes shall be placed at max. distance of 200' apart.

PLAN
Scale: 1" = 20'

Approved:

Chief, Traffic Signals & Technology Division, DTS Date

Approved:

Chief, Traffic Review Branch, DPP Date

THIS WORK WAS PREPARED BY ME OR UNDER MY SUPERVISION.
Darin N. Chinen
SIGNATURE EXPIRATION DATE OF THE LICENSE: 1/30/24

STATE OF HAWAII
DEPARTMENT OF TRANSPORTATION
HIGHWAYS DIVISION

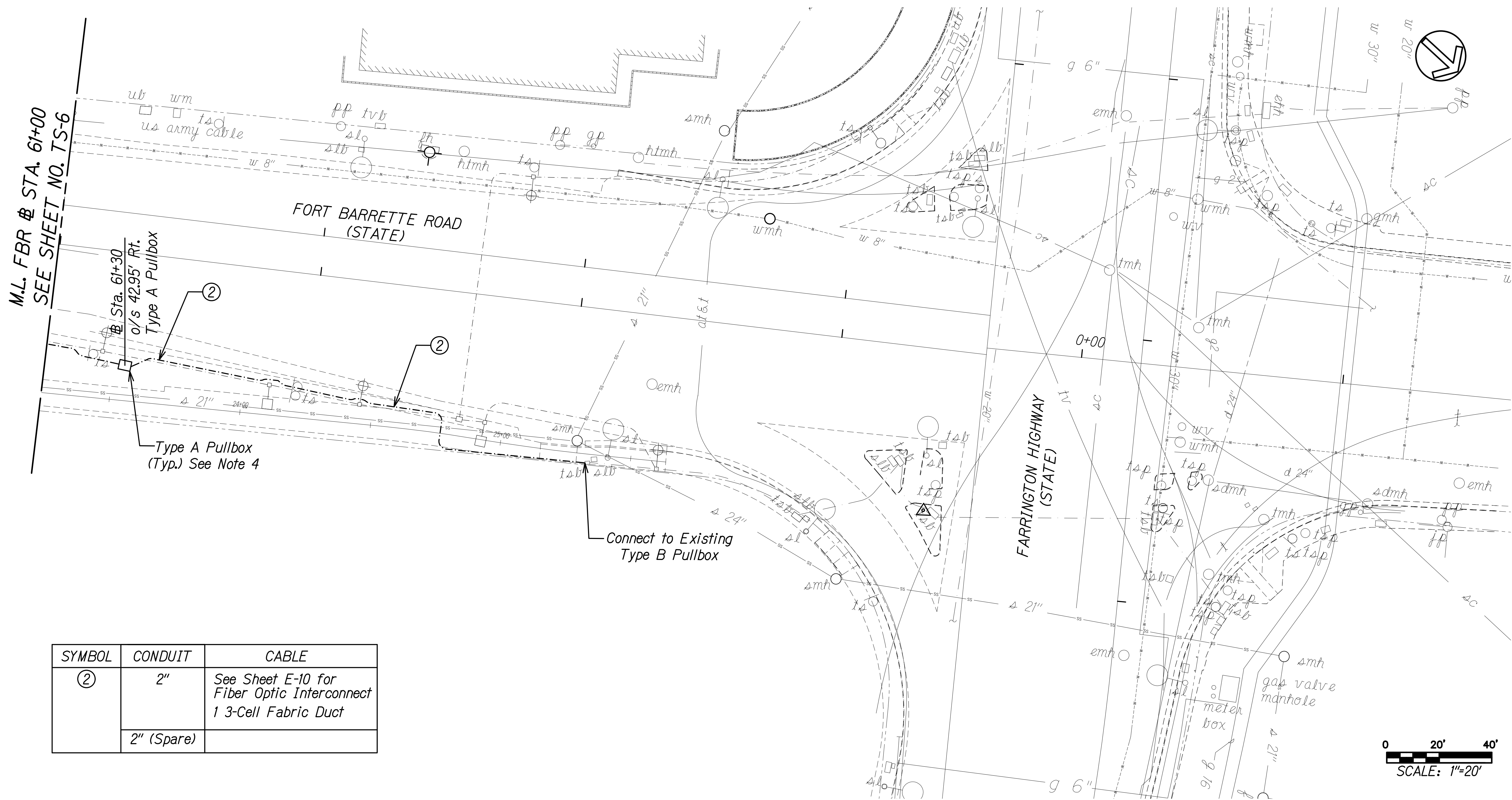
TRAFFIC SIGNAL INTERCONNECT PLAN

FORT BARRETTE ROAD
RAILROAD CROSSING & LIGHTING IMPROVEMENTS
Roosevelt Avenue to Farrington Highway
Federal-Aid Project No. HSIP-RR-090(017)

Scale: AS NOTED Date: June 2023

SHEET No. TS-5 OF 8 SHEETS

FED. ROAD DIST. NO.	STATE	FEDERAL AID PROJ. NO.	FISCAL YEAR	SHEET NO.	TOTAL SHEETS
HAWAII	HAW.	HSIP-RR-090(017)	2023	31	117



SYMBOL	CONDUIT	CABLE
②	2"	See Sheet E-10 for Fiber Optic Interconnect 1 3-Cell Fabric Duct
	2" (Spare)	

NOTES:

1. For Trench Details, see Sht. No. TS-8.
2. Concrete encased ducts shall be 2-Wide x 1-High, according to Standard Plan TE-36.
3. The Contractor shall notify the City & County of Honolulu, Department of Transportation Services, Traffic Signals and Technology Division, (808)768-8387, at least three (3) working days prior to commencing work on the traffic signal system.
4. Type "A" pullboxes shall be placed at max. distance of 200' apart.

PLAN
Scale: 1" = 20'

Approved:

Chief, Traffic Signals & Technology Division, DTS Date

Approved:

Chief, Traffic Review Branch, DPP Date

DAVID N. CHEN
LICENSED PROFESSIONAL ENGINEER
No. 7977-C
HAWAII, U.S.A.

THIS WORK WAS PREPARED BY ME
OR UNDER MY SUPERVISION.

David N. Chen
SIGNATURE

EXPIRATION DATE OF THE LICENSE
3/30/24

STATE OF HAWAII
DEPARTMENT OF TRANSPORTATION
HIGHWAYS DIVISION

TRAFFIC SIGNAL INTERCONNECT PLAN

FORT BARRETTE ROAD
RAILROAD CROSSING & LIGHTING IMPROVEMENTS
Roosevelt Avenue to Farrington Highway
Federal-Aid Project No. HSIP-RR-090(017)

Scale: AS NOTED Date: June 2023

SHEET No. TS-7 OF 8 SHEETS

