

SWPPP Attachment A-1
BMP Maps

FED. ROAD DIST. NO.	STATE	PROJ. NO.	FISCAL YEAR	SHEET NO.	TOTAL SHEETS
HAWAII	HAW.	901A-01-19	2022	20	50

To Outfall 1
Channel to Pacific
Ocean Via Detention
Basin Near Kapolei
Parkway and Kamaaha
Ave
158.08637D
21.29587D

BEGIN PROJECT
Enterprise Street
Sta. 40+25.3

△ TRAVERSE INFO:
GPS CALIBRATION POINT
TRAV KAP 3/4" PIPE W/ CAP
-14734.9273
-67.1160
ELEV. = 94.30

CURVE DATA
Δ = 59°50'00.7"
Δ/2 = 29°55'00.37"
R = 876.00'
T = 504.06'
C = 873.79'
Lc = 914.80'

TRUE NORTH
SCALE : 1" = 40'

SEQUENCE 1

To Coral Pit Basin
Outfall 2
Overflow to Pacific
Ocean Near Airport
Via Channel Near Ka
Makana Alii
158.06252D
21.30011D

Sta. 40+25.3± o/s 24.7' Rt. to # Sta. 53+52.6± o/s 29.0' Rt.
Install 1,250± L.F. New MGS Guardrail with New 50± L.F.
MGS End Treatment TL-3 (MSKT-SP-MGS, Soft Stop,
MAX-Tension, or Approved Equal) each end. See General
Notes #38. Probing for utilities shall be considered
incidental to Guardrail items.

LEGEND
Protect Inlet ○
Perimeter Sediment Control —

1 CONSTRUCTION SEQUENCE DIAGRAM BEGIN
PROJECT TO STA 54+00+/- (STA. 40+25 TO STA. 54+00
+/-)
1) Install Inlet Protection and Perimeter Sediment
Control
2) Construct Roadway
3) Remove BMPs once roadway is stabilized except at
Contractor Staging/Storage Areas.

STATE OF HAWAII
DEPARTMENT OF TRANSPORTATION
HIGHWAYS DIVISION

ROADWAY PLANS

FORT BARRETTE ROAD IMPROVEMENTS
VICINITY OF KAMAHA AVENUE TO VICINITY OF FARRINGTON HIGHWAY
PROJECT NO. 901A-01-22

Scale: 1" = 40.0' Date: January, 2022

SHEET No. 1 OF 3 SHEETS

- Notes:
- For relocation of traffic signs, see Signing & Pavement Marking Plans.
 - For Traffic Signal related work, see Traffic Signal Plans.

Resurfacing Limits (hatched for clarity)

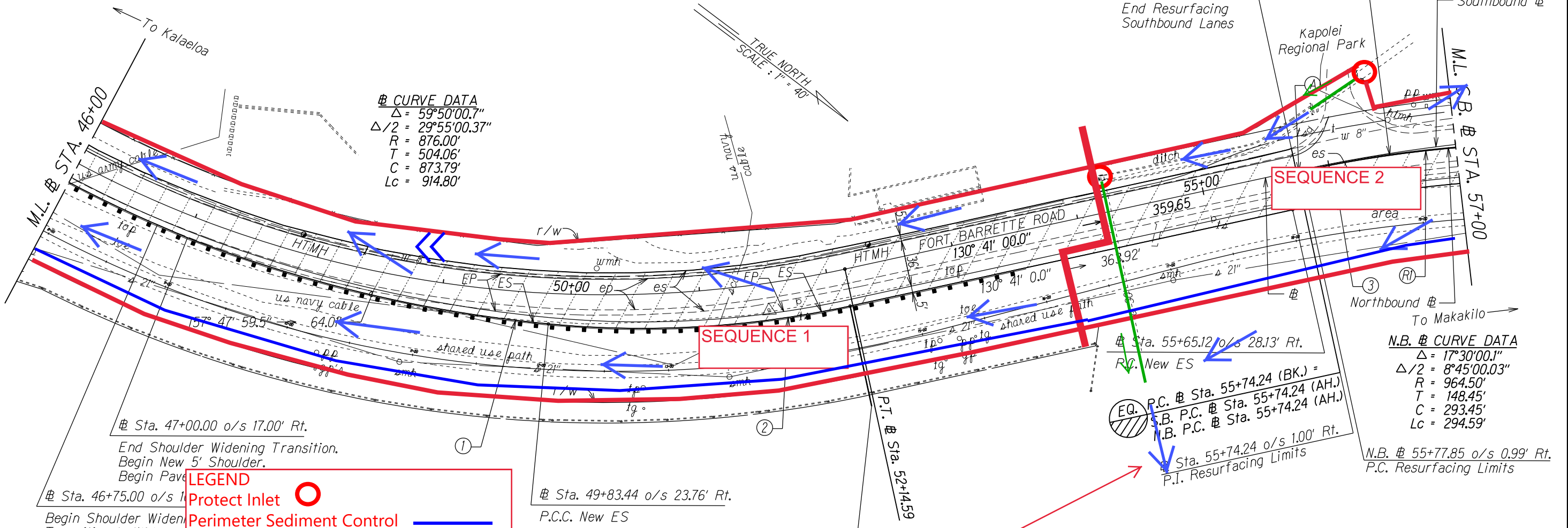
FED. ROAD DIST. NO.	STATE	PROJ. NO.	FISCAL YEAR	SHEET NO.	TOTAL SHEETS
HAWAII	HAW.	901A-01-19	2022	21	50

CURVE DATA FOR NEW ES			
	①	②	③
Δ	15°53'18.8"	17°46'6.9"	15°05'22.5"
$\Delta/2$	7°56'39.4"	8°53'03.5"	7°32'41.3"
R	1,045.00'	762.00'	945.00'
T	145.83'	119.11'	125.16'
C	288.86'	235.37'	248.16'
Lc	289.79'	236.31'	248.88'
S.E.	0.08 ft/ft	0.08 ft/ft	0.08 ft/ft

CURVE DATA FOR RESURFACING LIMITS	
	(R)
Δ	12° 23' 27.00"
$\Delta/2$	6° 11' 43.50"
R	961.00'
T	104.32'
C	207.42'
Lc	207.83'
Azimuth (A)	130° 41' 00.00" → 3.605'

S.B. # CURVE DATA
 $\Delta = 13°23'22.0"$
 $\Delta/2 = 6°41'41.0"$
R = 1,264.71'
T = 148.45'
C = 294.88'
Lc = 295.55'

Resurfacing Limits to Match Previous Resurfacing Limits. Limits follow the existing Φ /median striping. See Table for Curve Data. See Detail C on Sht. No. A3.



2 CONSTRUCTION SEQUENCE DIAGRAM STA 54+00+/- TO END PROJECT (STA. 54+00+/- TO STA. 61+15+/-)
1) Install Inlet Protection and Perimeter Swediment Control
2) Construct Roadway
3) Remove BMPs once roadway is stabilized except at Contractor Staging/Storage Areas.

To Coral Pit Basin
Outfall 2
Overflow to Pacific
Ocean Near Airport
Via Keahalani Ave CB
158.06252D
21.30011D

STATE OF HAWAII
DEPARTMENT OF TRANSPORTATION
HIGHWAYS DIVISION

ROADWAY PLANS

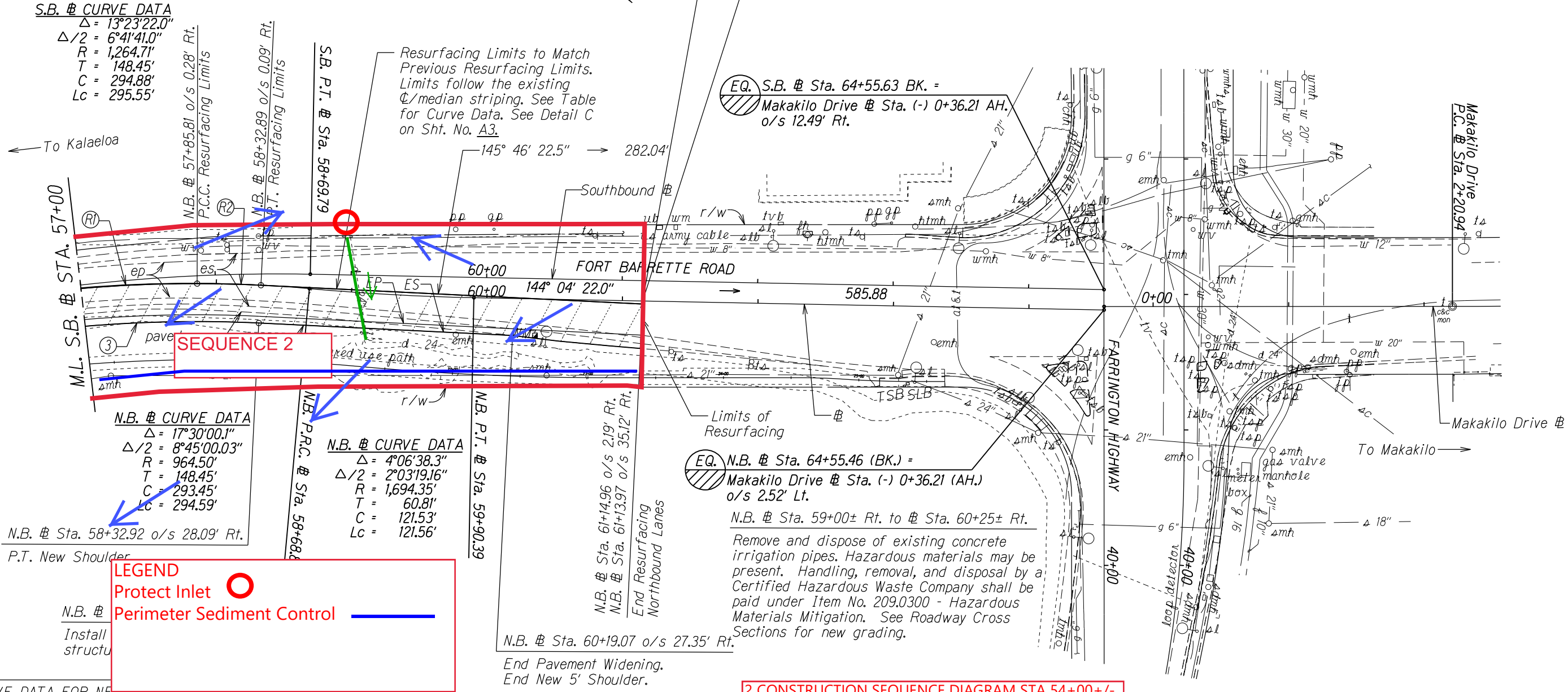
FORT BARRETTE ROAD IMPROVEMENTS
VICINITY OF KAMAHA AVENUE TO VICINITY OF FARRINGTON HIGHWAY
PROJECT NO. 901A-01-22

Scale: 1" = 40.0' Date: January, 2022

SHEET No. 2 OF 3 SHEETS

FED. ROAD DIST. NO.	STATE	PROJ. NO.	FISCAL YEAR	SHEET NO.	TOTAL SHEETS
HAWAII	HAW.	901A-01-19	2022	22	50

△ TRAVERSE INFO:
GPS CALIBRATION POINT
BRASS DISK "FORT B"
-13210.9293
-1133.6612
ELEV. = 114.95



CURVE DATA FOR NEW L.S.	
	③
Δ	15°05'22.5"
Δ/2	7°32'41.3"
R	945.00'
T	125.16'
C	248.16'
Lc	248.88'
S.E.	0.08 ft/ft
Azimuth (B)	145° 46' 22.5" → 187.04'

CURVE DATA FOR RESURFACING LIMITS		
	(R1)	(R2)
Δ	12° 23' 27.00"	2° 41' 55.50"
Δ/2	6° 11' 43.50"	1° 20' 57.75"
R	961.00'	999.00'
T	104.32'	23.53'
C	207.42'	47.05'
Lc	207.83'	47.06'

2 CONSTRUCTION SEQUENCE DIAGRAM STA 54+00+/- TO END PROJECT (STA. 54+00+/- TO STA. 61+15+/-)
1) Install Inlet Protection and Perimeter Sediment Control
2) Construct Roadway
3) Remove BMPs once roadway is stabilized except at Contractor Staging/Storage Areas.

STATE OF HAWAII
DEPARTMENT OF TRANSPORTATION
HIGHWAYS DIVISION

ROADWAY PLANS

FORT BARRETTE ROAD IMPROVEMENTS
VICINITY OF KAMAHA AVENUE TO VICINITY OF FARRINGTON HIGHWAY
PROJECT NO. 901A-01-22

Scale: 1" = 40.0' Date: January, 2022

SHEET No. 3 OF 3 SHEETS

FED. ROAD DIST. NO.	STATE	PROJ. NO.	FISCAL YEAR	SHEET NO.	TOTAL SHEETS
HAWAII	HAW.	901A-01-19	2022	20	50

To Outfall 1
Channel to Pacific
Ocean Via Detention
Basin Near Kapolei
Parkway and Kamaaha
Ave
158.08637D
21.29587D

BEGIN PROJECT
Enterprise Street
Sta. 40+25.3

△ TRAVERSE INFO:
GPS CALIBRATION POINT
TRAV KAP 3/4" PIPE W/ CAP
-14734.9273
-67.1160
ELEV. = 94.30

CURVE DATA
Δ = 59°50'00.7"
Δ/2 = 29°55'00.37"
R = 876.00'
T = 504.06'
C = 873.79'
Lc = 914.80'

TRUE NORTH
SCALE : 1" = 40'

Sta. 40+25.3± o/s 24.7' Rt. to # Sta. 53+52.6± o/s 29.0' Rt.
Install 1,250± L.F. New MGS Guardrail with New 50± L.F.
MGS End Treatment TL-3 (MSKT-SP-MGS, Soft Stop,
MAX-Tension, or Approved Equal) each end. See General
Notes #38. Probing for utilities shall be considered
incidental to Guardrail items.

BMP Plan Road Construction
Construction Activities Include Resurfacing,
widening, installation of milepost reference
markers and shoulder/median rumble strip

LEGEND
Protect Inlet ○
Perimeter Sediment Control —

- Notes:
- For relocation of traffic signs, see Signing & Pavement Marking Plans.
 - For Traffic Signal related work, see Traffic Signal Plans.

Resurfacing Limits (hatched for clarity)

STATE OF HAWAII
DEPARTMENT OF TRANSPORTATION
HIGHWAYS DIVISION

ROADWAY PLANS

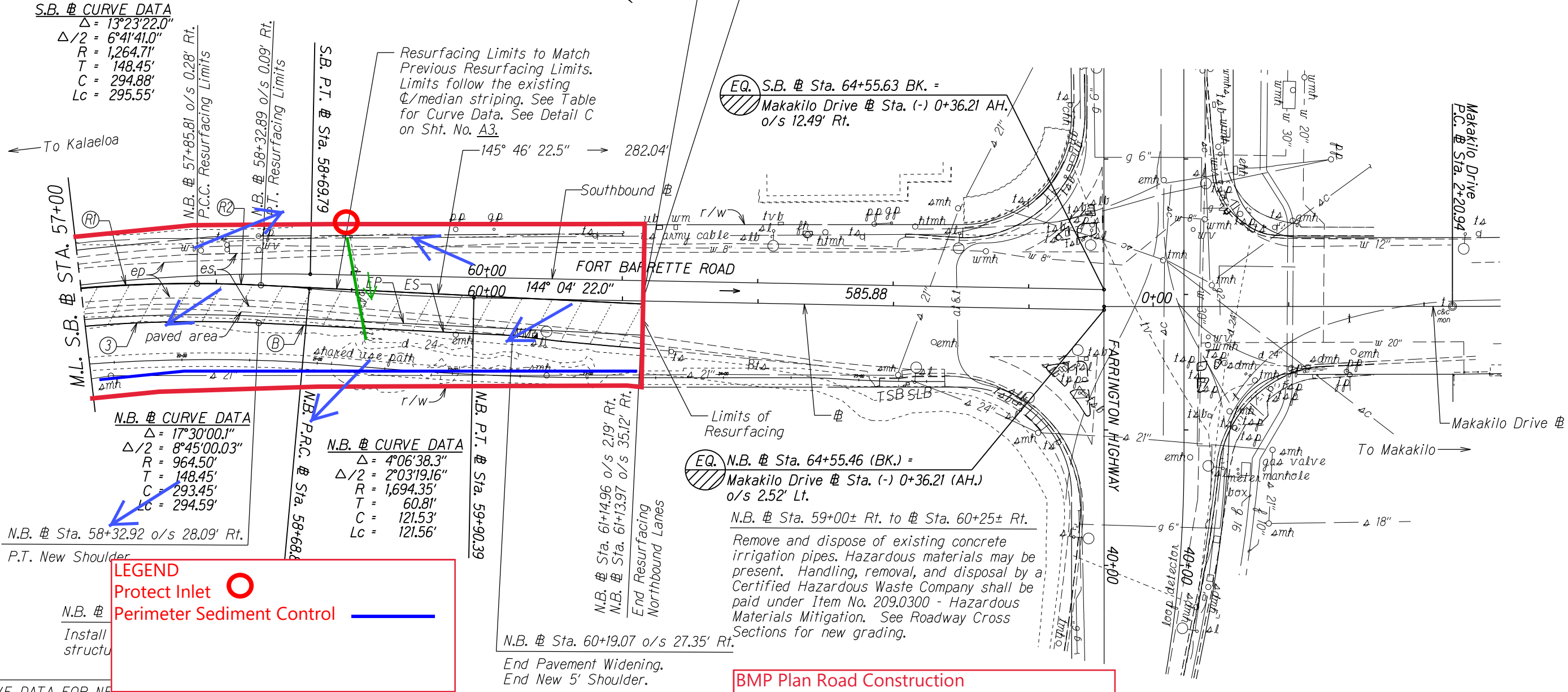
FORT BARRETTE ROAD IMPROVEMENTS
VICINITY OF KAMAHA AVENUE TO VICINITY OF FARRINGTON HIGHWAY
PROJECT NO. 901A-01-22

Scale: 1" = 40.0' Date: January, 2022

SHEET No. 1 OF 3 SHEETS

FED. ROAD DIST. NO.	STATE	PROJ. NO.	FISCAL YEAR	SHEET NO.	TOTAL SHEETS
HAWAII	HAW.	901A-01-19	2022	22	50

△ TRAVERSE INFO:
GPS CALIBRATION POINT
BRASS DISK "FORT B"
-13210.9293
-1133.6612
ELEV. = 114.95



CURVE DATA FOR NEW L.S.	
	③
Δ	15°05'22.5"
Δ/2	7°32'41.3"
R	945.00'
T	125.16'
C	248.16'
Lc	248.88'
S.E.	0.08 ft/ft
Azimuth (B)	145° 46' 22.5" → 187.04'

CURVE DATA FOR RESURFACING LIMITS		
	(R1)	(R2)
Δ	12° 23' 27.00"	2° 41' 55.50"
Δ/2	6° 11' 43.50"	1° 20' 57.75"
R	961.00'	999.00'
T	104.32'	23.53'
C	207.42'	47.05'
Lc	207.83'	47.06'

- Notes:
- For relocation of traffic signs, see Signing & Pavement Marking Plans.
 - For new pavement grades, see Profile, Superelevation Plans and Cross Sections.

BMP Plan Road Construction
Construction Activities Include Resurfacing, widening, installation of milepost reference markers and shoulder/median rumble strip

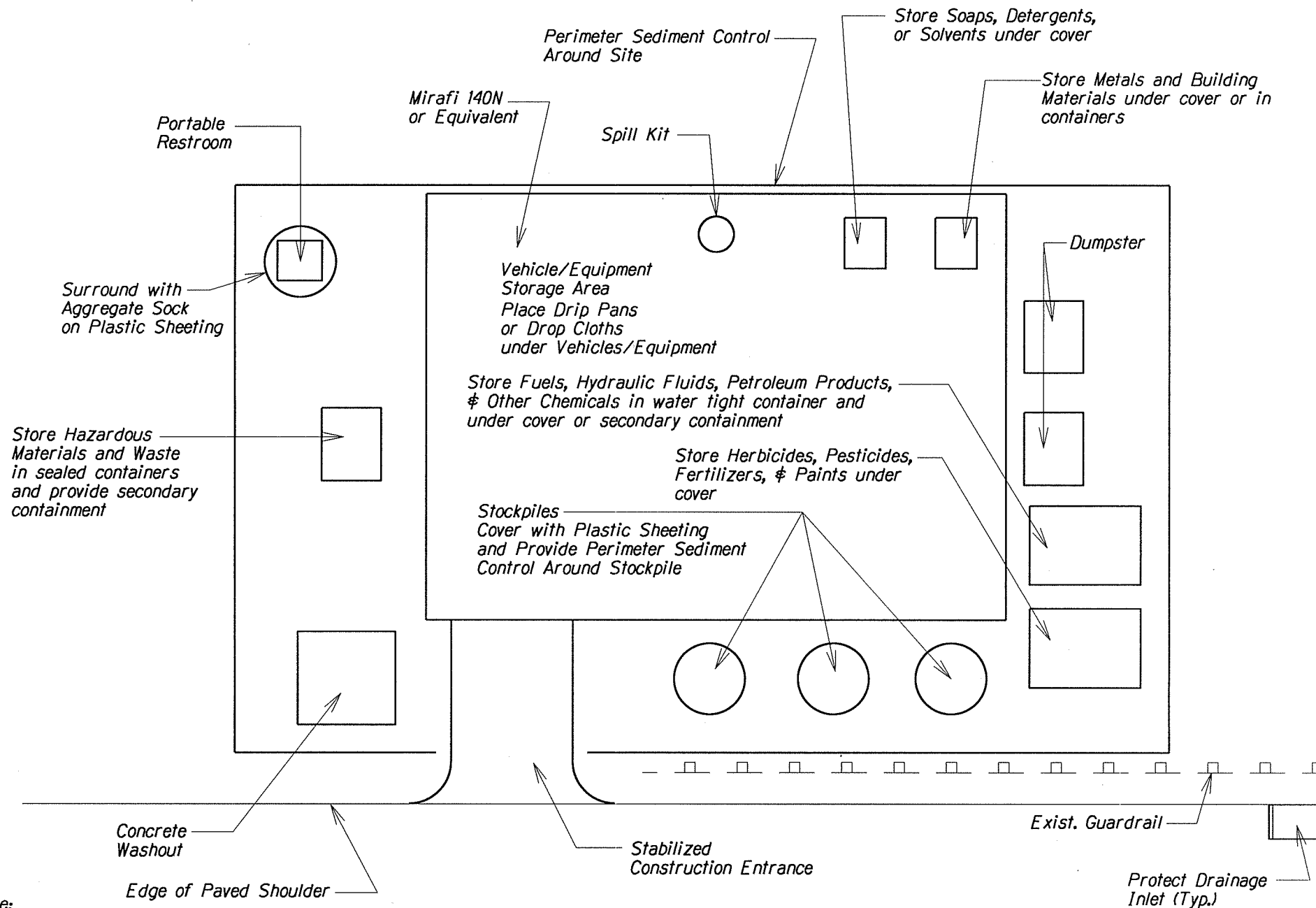
STATE OF HAWAII
DEPARTMENT OF TRANSPORTATION
HIGHWAYS DIVISION

ROADWAY PLANS

FORT BARRETTE ROAD IMPROVEMENTS
VICINITY OF KAMAHA AVENUE TO VICINITY OF FARRINGTON HIGHWAY
PROJECT NO. 901A-01-22

Scale: 1" = 40.0' Date: January, 2022

SHEET No. 3 OF 3 SHEETS

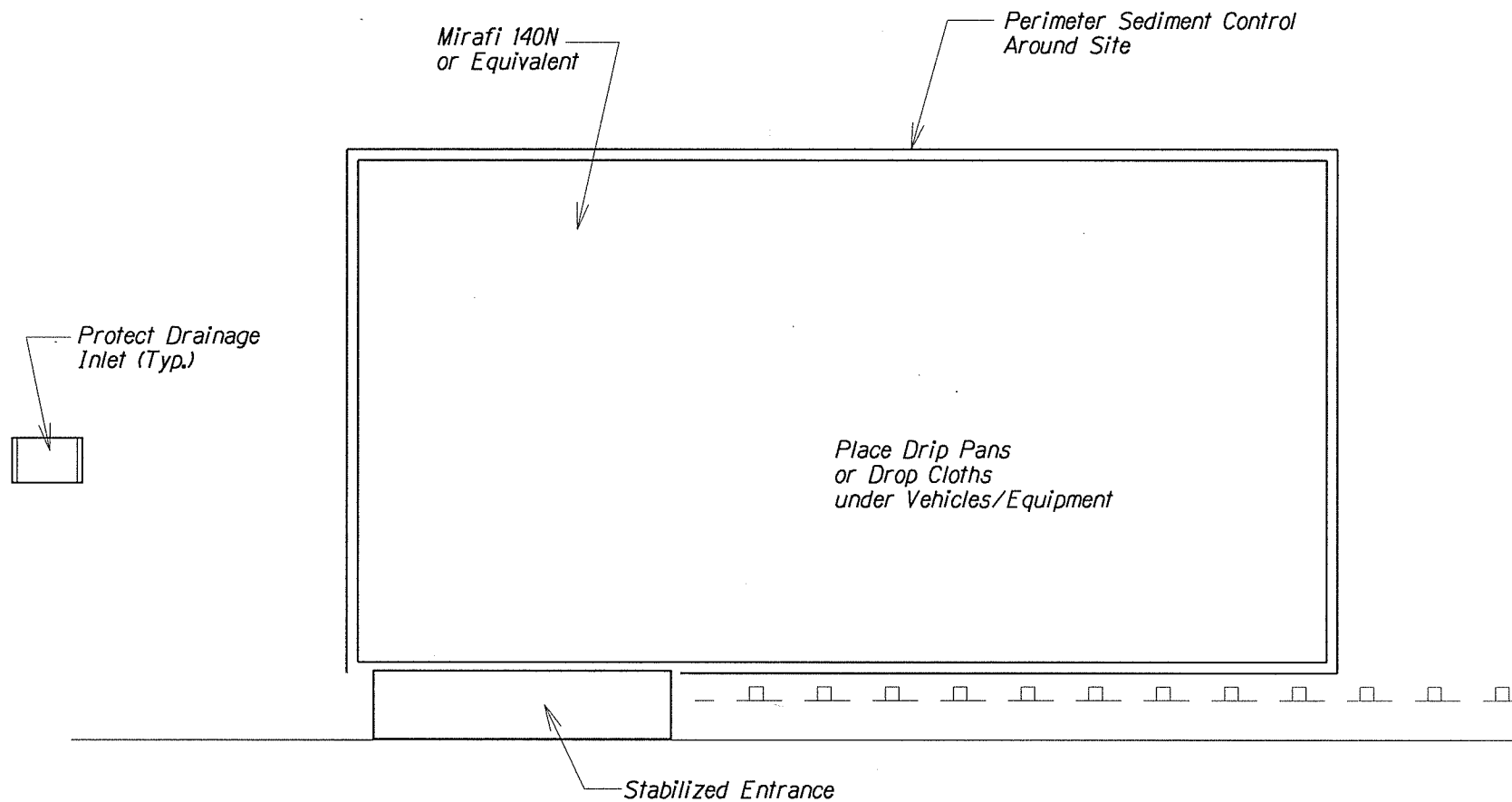


Note:

- 1) Restore area to equivalent of original condition once construction is completed.
- 2) Contractor shall ensure proper protection for Staging/Storage Area.
- 3) Do not maintain or wash vehicles on-site. Provide appropriate BMPs if Contractor elects to do so.

STAGING/STORAGE AREA

Not to Scale



Note:

- 1) Restore area to equivalent of original condition once construction is completed.
- 2) Contractor shall ensure proper protection for Equipment Storage Area.

EQUIPMENT STORAGE AREA
Not to Scale