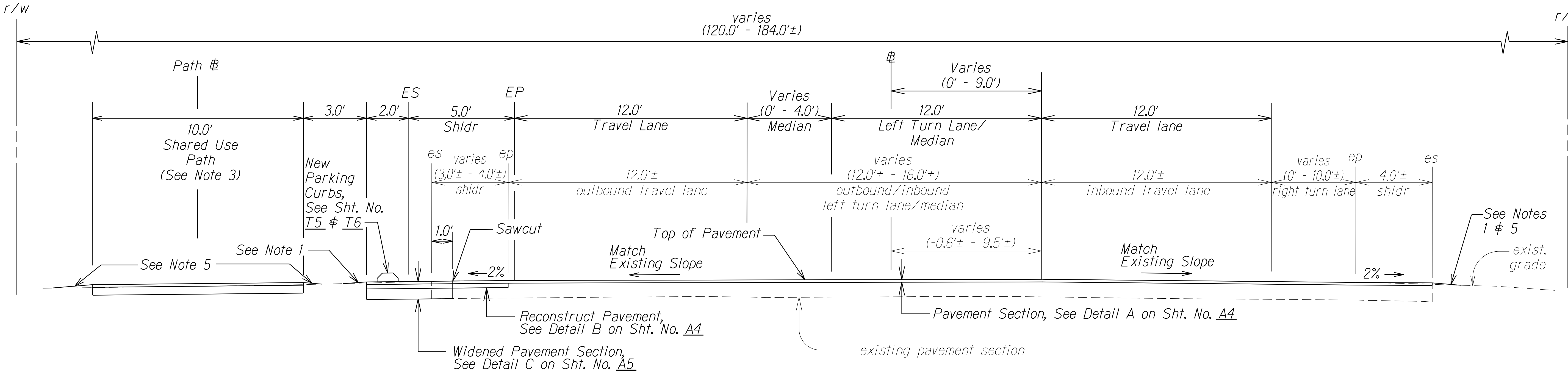
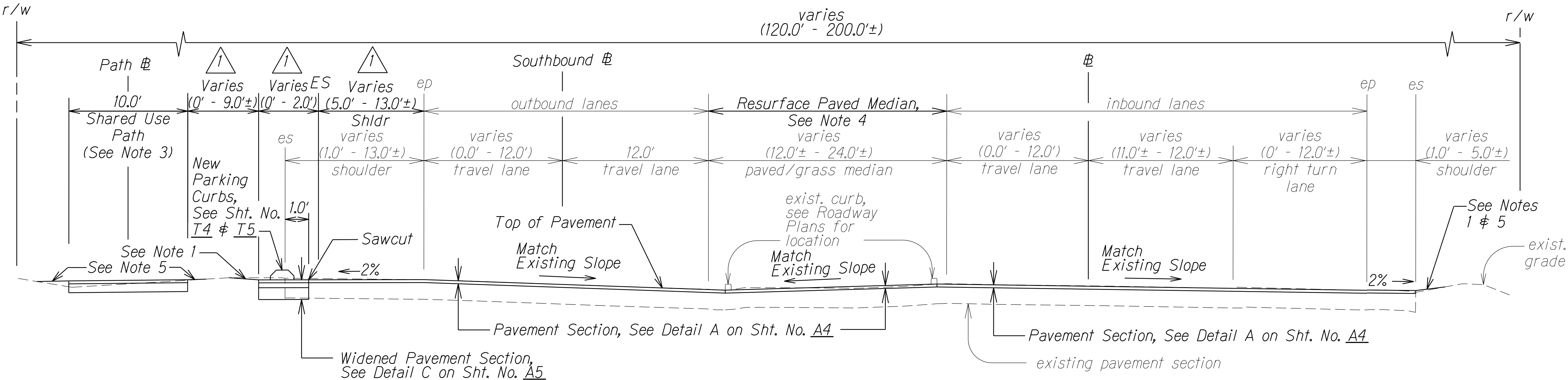


FED. ROAD DIST. NO.	STATE	PROJ. NO.	FISCAL YEAR	SHEET NO.	TOTAL SHEETS
HAWAII	HAW.	901A-01-19	2020	ADD.12	167




TYPICAL SECTION ON TANGENT  
# STA. 8+00.0± TO # STA. 20+56± (KAPOLEI PARKWAY)  
Scale: N.T.S.



TYPICAL SECTION  
ENTERPRISE STREET @ STA. 1+22.31± TO @ STA. 8+00.0±  
Scale: N.T.S.

- Notes.

1. Safety Edge/Shoulder Dressing. See Typical Pavement Edge Detail on Sht. No. A5.
2. For limits of reconstruction, see Roadway Plans.
3. See Shared Use Path Typical Sections on Sht. No. A5.
4. Resurface paved median where there is no existing curb.
5. Hydro-mulch Seed newly graded areas with Bermuda Seeding.
6. See Partial Typical Section on Sht. No. A4 for @ Sta. 2+00± to 5+75±.

	2/10/20	<i>Revised text. Added Note 6.</i>
	<i>DATE</i>	<i>REVISION</i>

STATE OF HAWAII  
DEPARTMENT OF TRANSPORTATION  
HIGHWAYS DIVISION

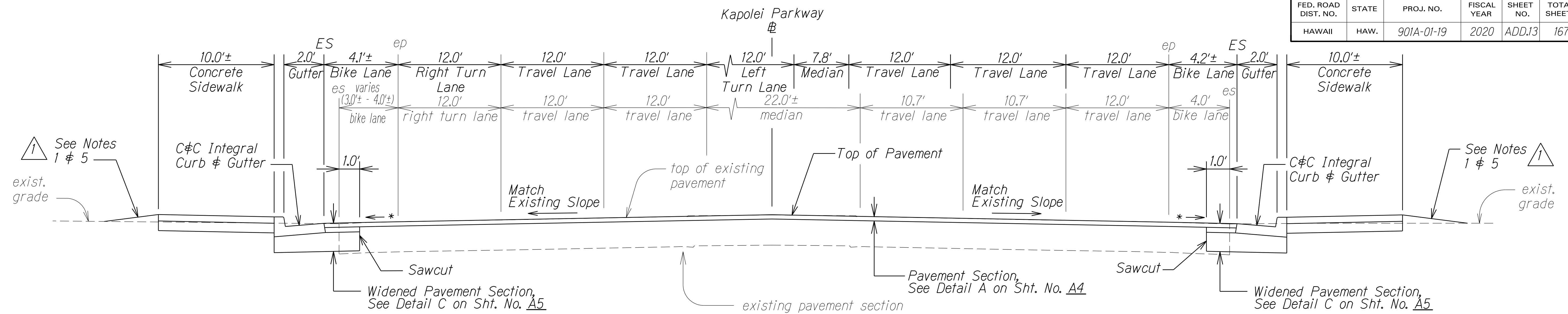
**TYPICAL SECTIONS**

FORT BARRETTE ROAD OPERATIONAL IMPROVEMENTS  
Roosevelt Avenue to Farrington Highway  
Project No. 901A-01-19

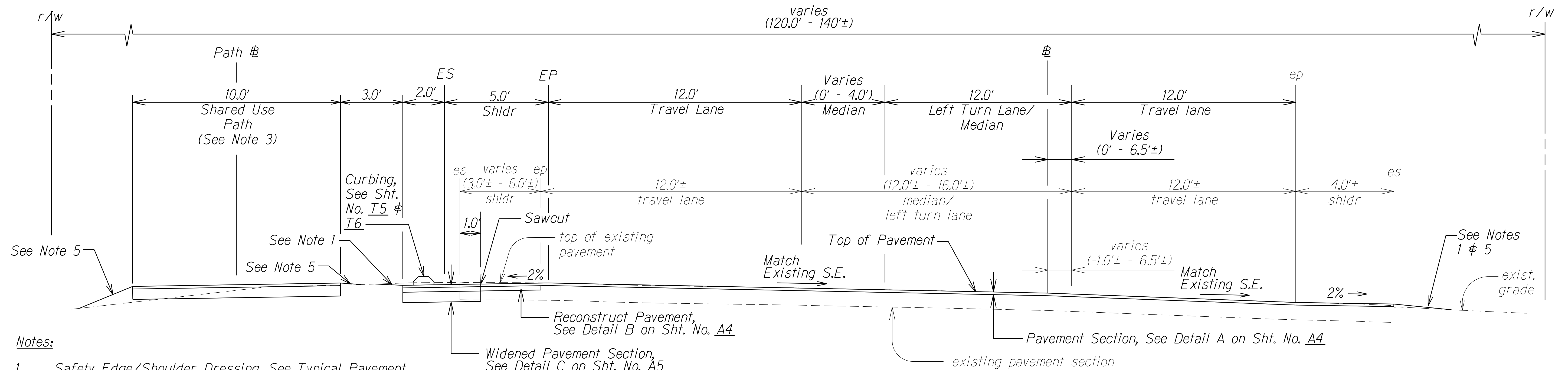
Scale: Not to Scale Date: February, 2020

SHEET No. A1 OF 7 SHEETS

FED. ROAD DIST. NO.	STATE	PROJ. NO.	FISCAL YEAR	SHEET NO.	TOTAL SHEETS
HAWAII	HAW.	901A-01-19	2020	ADD.13	167



**TYPICAL SECTION**  
**KAPOLEI PARKWAY # STA. 0+29.0± TO KAPOLEI PARKWAY # STA. 0+84.0±**  
Scale: N.T.S.



**Notes:**

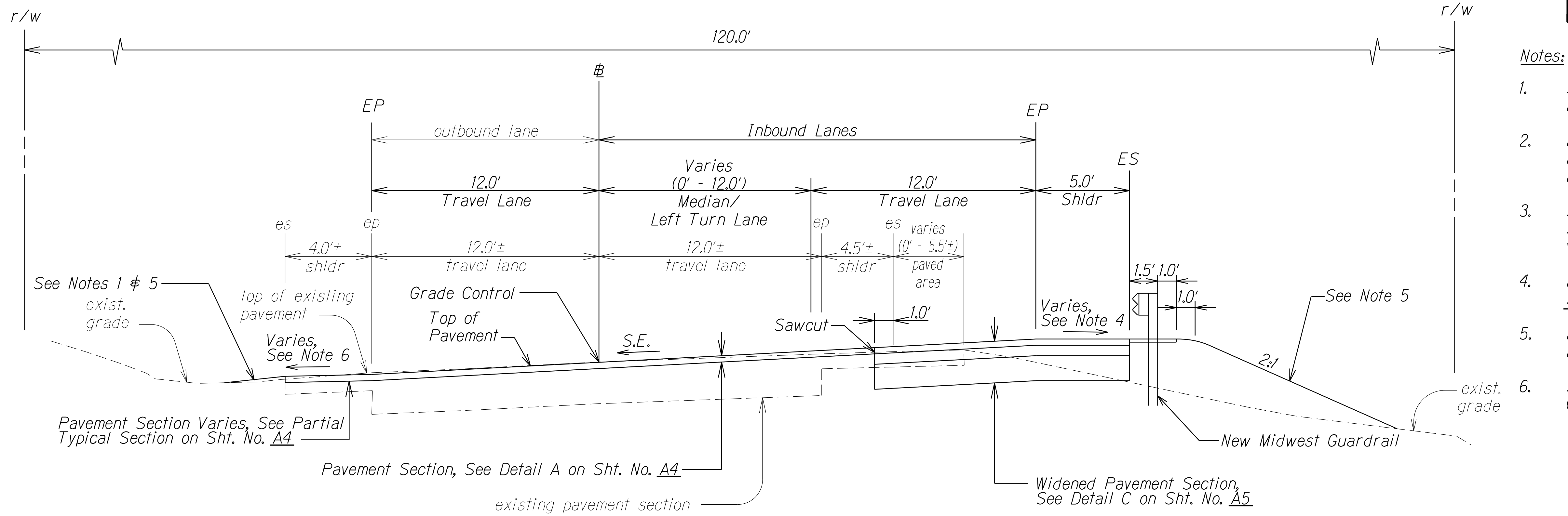
1. Safety Edge/Shoulder Dressing. See Typical Pavement Edge Detail on Sht. No. A5.
2. For limits of reconstruction, see Roadway Plans.
3. See Shared Use Path Typical Sections on Sht. No. A5.
4. See Roadway Cross Sections and Pavement Grade Plan for New Right Turn Lane.
5. Hydro-mulch Seed newly graded areas with Bermuda Seeding.
6. For New Concrete Sidewalk typical details, see Standard Plan D-15. For New C#C Integral Curb & Gutter typical details, see C#C Std. Detail R-4A Rev.
- \* 7. For cross slope and new grades at New Edge of Shoulder, see Sht. No. C8 & C9.

**TYPICAL SECTION ON CURVE**  
**# STA. 8+00.0± TO # STA. 20+56± (KAPOLEI PARKWAY)**  
Scale: N.T.S.

2/10/20	Moved typical section and notes from Sht. No. A4 to this sheet. Revised note number callout. Revised station limits on typical section title.
DATE	REVISION

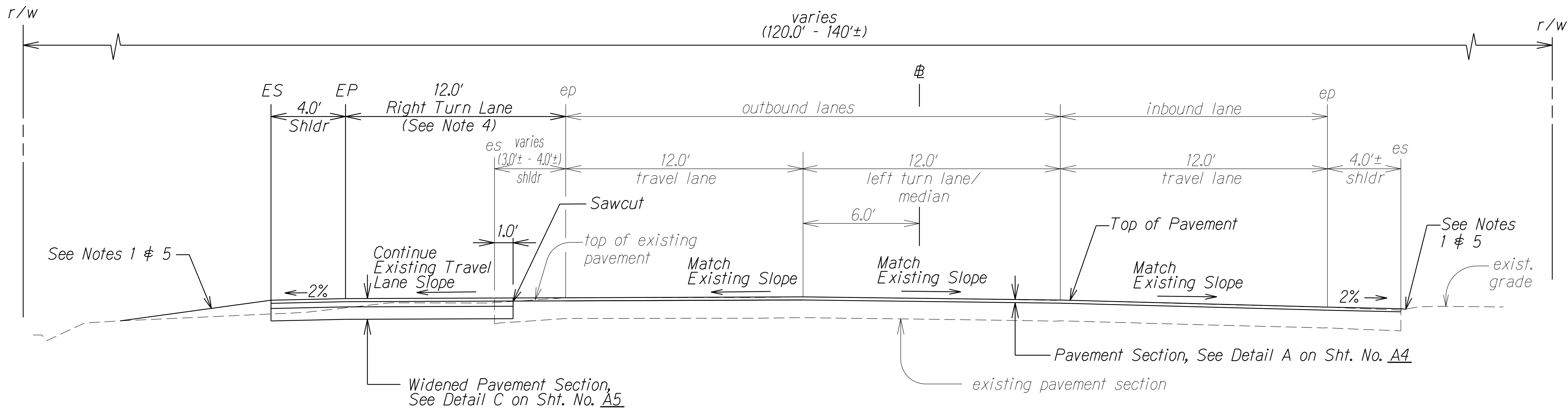
STATE OF HAWAII DEPARTMENT OF TRANSPORTATION HIGHWAYS DIVISION
<b>TYPICAL SECTIONS</b>
FORT BARRETTE ROAD OPERATIONAL IMPROVEMENTS Roosevelt Avenue to Farrington Highway Project No. 901A-01-19
Scale: Not to Scale Date: February, 2020
SHEET No. A2 OF 7 SHEETS

FED. ROAD DIST. NO.	STATE	PROJ. NO.	FISCAL YEAR	SHEET NO.	TOTAL SHEETS
HAWAII	HAW.	901A-01-19	2020	ADD.14	167



- Notes:
1. Safety Edge/Shoulder Dressing. See Typical Pavement Edge Detail on Sht. No. A5.
  2. For limits of Midwest Guardrail, see Roadway Plans. For details, see Guardrail Details sheets.
  3. See Superelevation Plans and Roadway Cross Sections for new pavement grades at widened roadway.
  4. For New Shoulder Cross Slopes, see Sht. No. SE3 & SE4.
  5. Hydro-mulch Seed newly graded areas with Bermuda Seeding.
  6. See Roadway Cross Sections and Pavement Grade Plan for New Right Turn Lane.

**TYPICAL SECTION**  
# STA. 45+30.0± TO # STA. 55+74.24±  
Scale: N.T.S.



**TYPICAL SECTION**  
# STA. 21+81± (KAPOLEI PARKWAY) TO # STA. 26+00.0±  
Scale: N.T.S.

1	2/10/20	Moved typical section from Sht. No. A3 to this sheet.
DATE	REVISION	

STATE OF HAWAII  
DEPARTMENT OF TRANSPORTATION  
HIGHWAYS DIVISION

**TYPICAL SECTIONS**

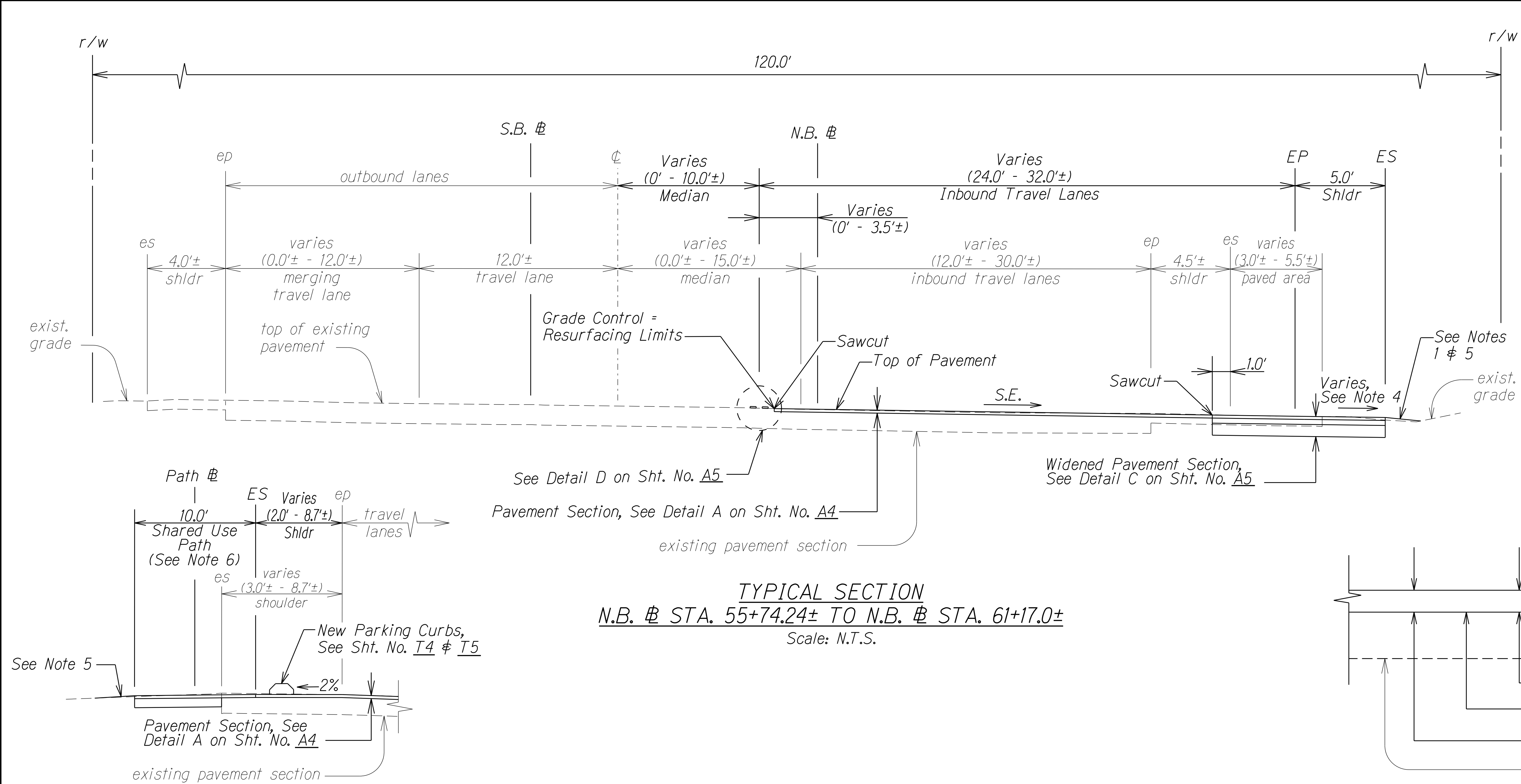
FORT BARRETTE ROAD OPERATIONAL IMPROVEMENTS  
Roosevelt Avenue to Farrington Highway  
Project No. 901A-01-19

Scale: Not to Scale Date: February, 2020

SHEET No. A3 OF 7 SHEETS

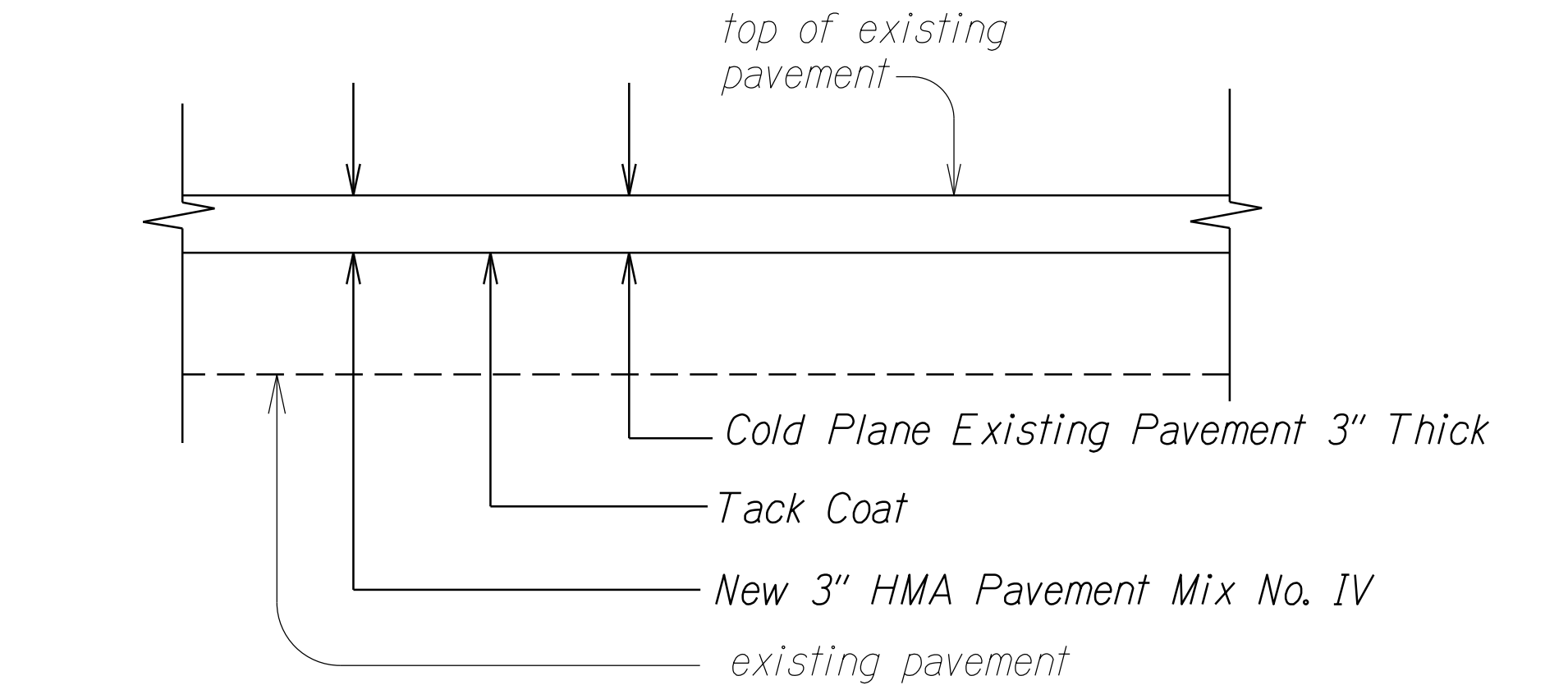
ORIGINAL PLAN	SURVEY PLOTTED BY	DATE
NOTE BOOK	DRAWN BY	
	DESIGNED BY	
	CHECKED BY	

FED. ROAD DIST. NO.	STATE	PROJ. NO.	FISCAL YEAR	SHEET NO.	TOTAL SHEETS
HAWAII	HAW.	901A-01-19	2020	ADD.15	167

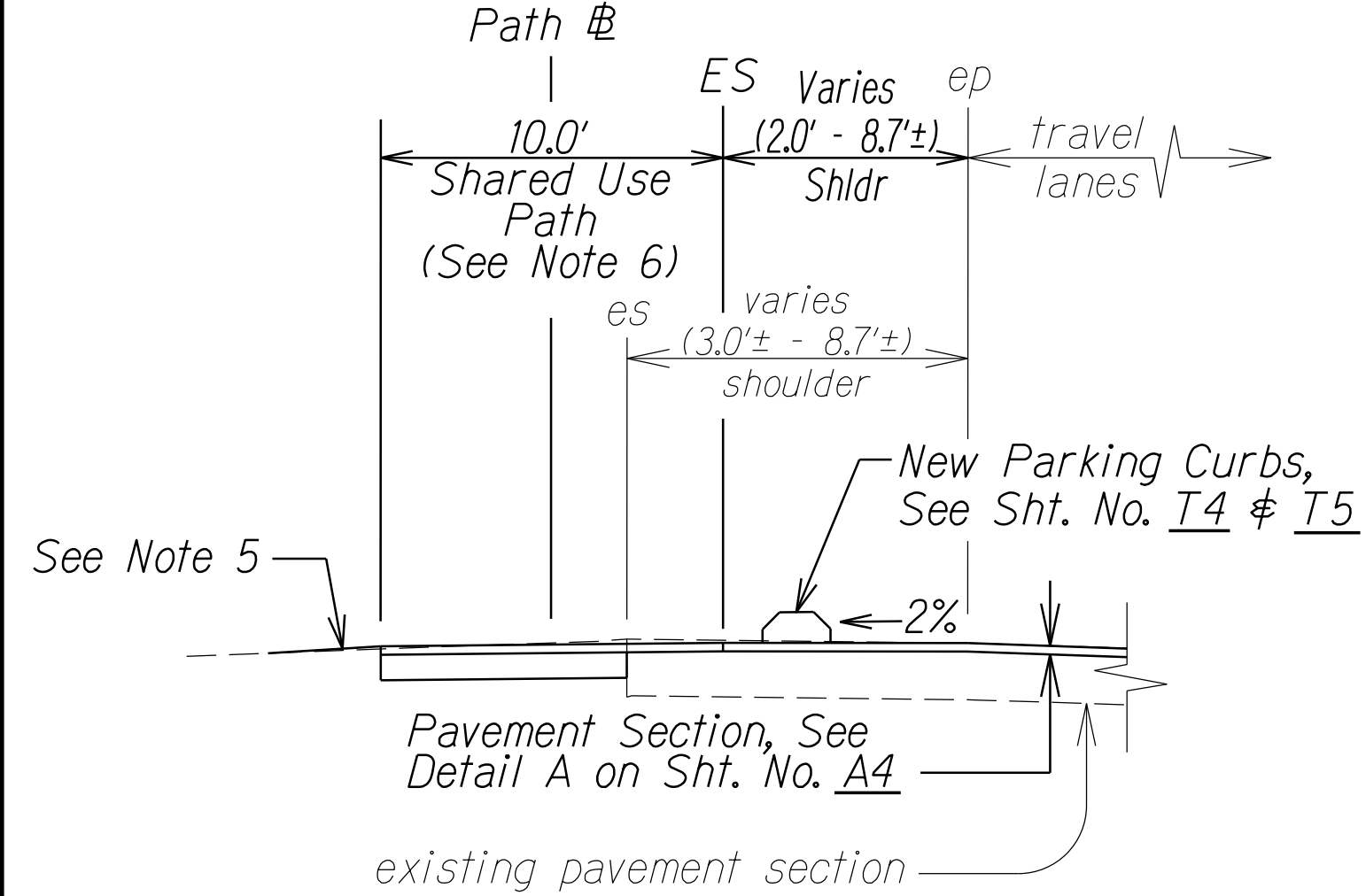


- Notes:**
1. Safety Edge/Shoulder Dressing. See Typical Pavement Edge Detail on Sht. No. A5.
  2. For limits of Midwest Guardrail, see Roadway Plans. For details, see Guardrail Details sheets.
  3. See Superelevation Plans and Roadway Cross Sections for new pavement grades at widened roadway.
  4. For New Shoulder Cross Slopes, see Sht. No. SE3 & SE4.
  5. Hydro-mulch Seed newly graded areas with Bermuda Seeding.
  6. See Shared Use Path Typical Sections on Sht. No. A5.

**TYPICAL SECTION**  
N.B. # STA. 55+74.24± TO N.B. # STA. 61+17.0±  
Scale: N.T.S.

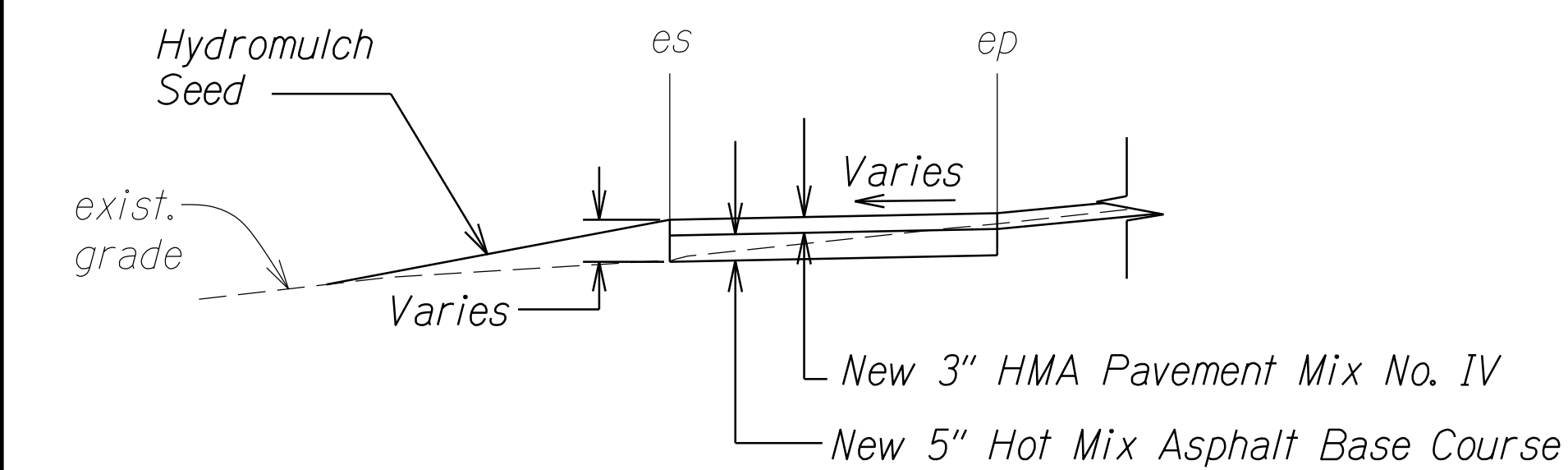


**DETAIL A - AC PAVEMENT SECTION FOR RESURFACING**  
Scale: N.T.S.



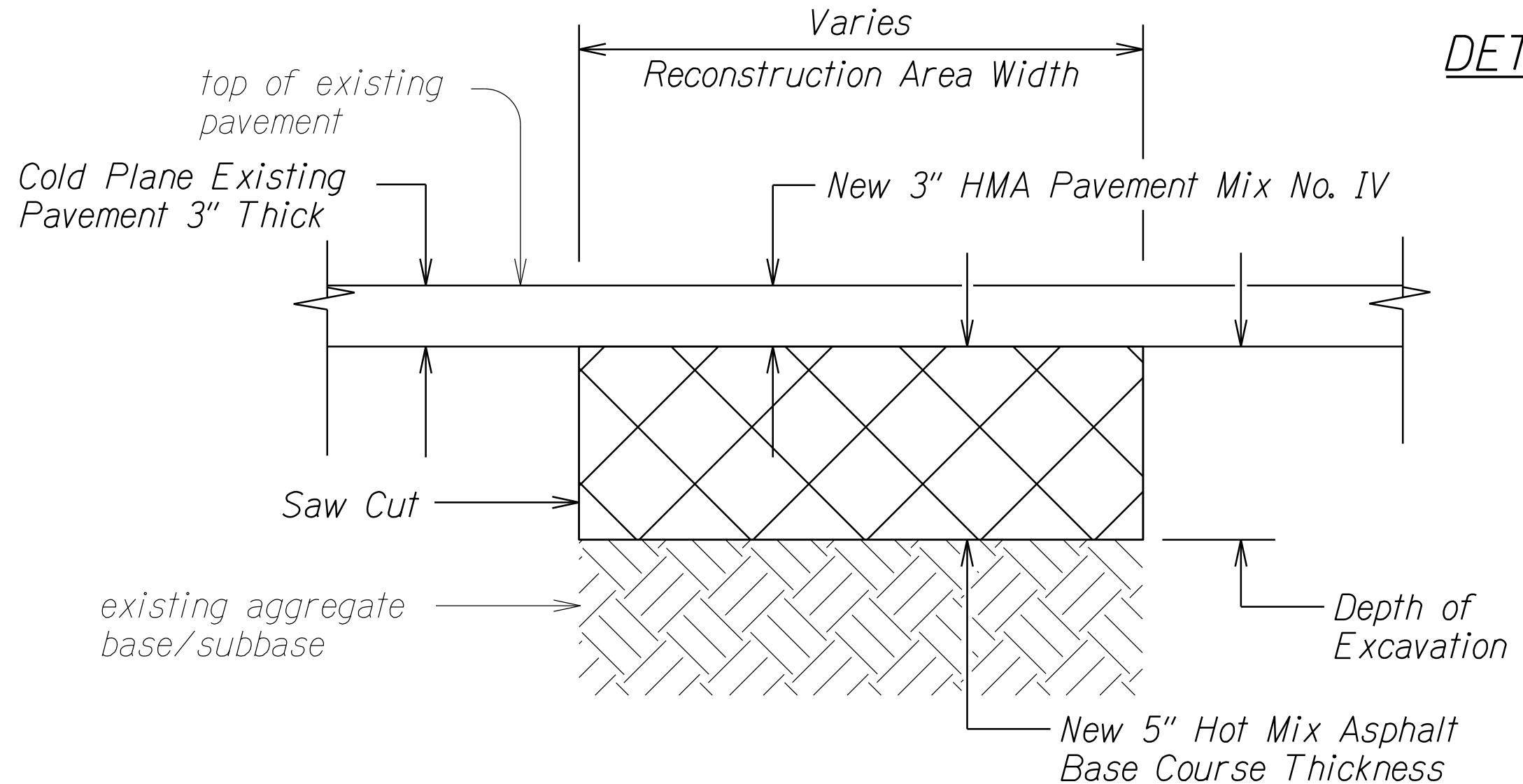
Note: See Typical Section on Sht. No. A1.

**PARTIAL TYPICAL SECTION**  
# STA. 2+00.0± TO # STA. 5+75.0±  
Scale: N.T.S.



Note: See Typical Section on Sht. No. A3.

**PARTIAL TYPICAL SECTION**  
# STA. 45+50.0± TO # STA. 50+00.0±  
Scale: N.T.S.



**DETAIL B - AC PAVEMENT RECONSTRUCTION DETAIL**  
Scale: N.T.S.

1	2/10/20	Added new partial typical section.
	DATE	REVISION
	STATE OF HAWAII DEPARTMENT OF TRANSPORTATION HIGHWAYS DIVISION <b>TYPICAL SECTIONS &amp; DETAILS</b> FORT BARRETTE ROAD OPERATIONAL IMPROVEMENTS Roosevelt Avenue to Farrington Highway Project No. 901A-01-19 Scale: Not to Scale Date: February, 2020 SHEET No. <b>A4</b> OF 7 SHEETS	

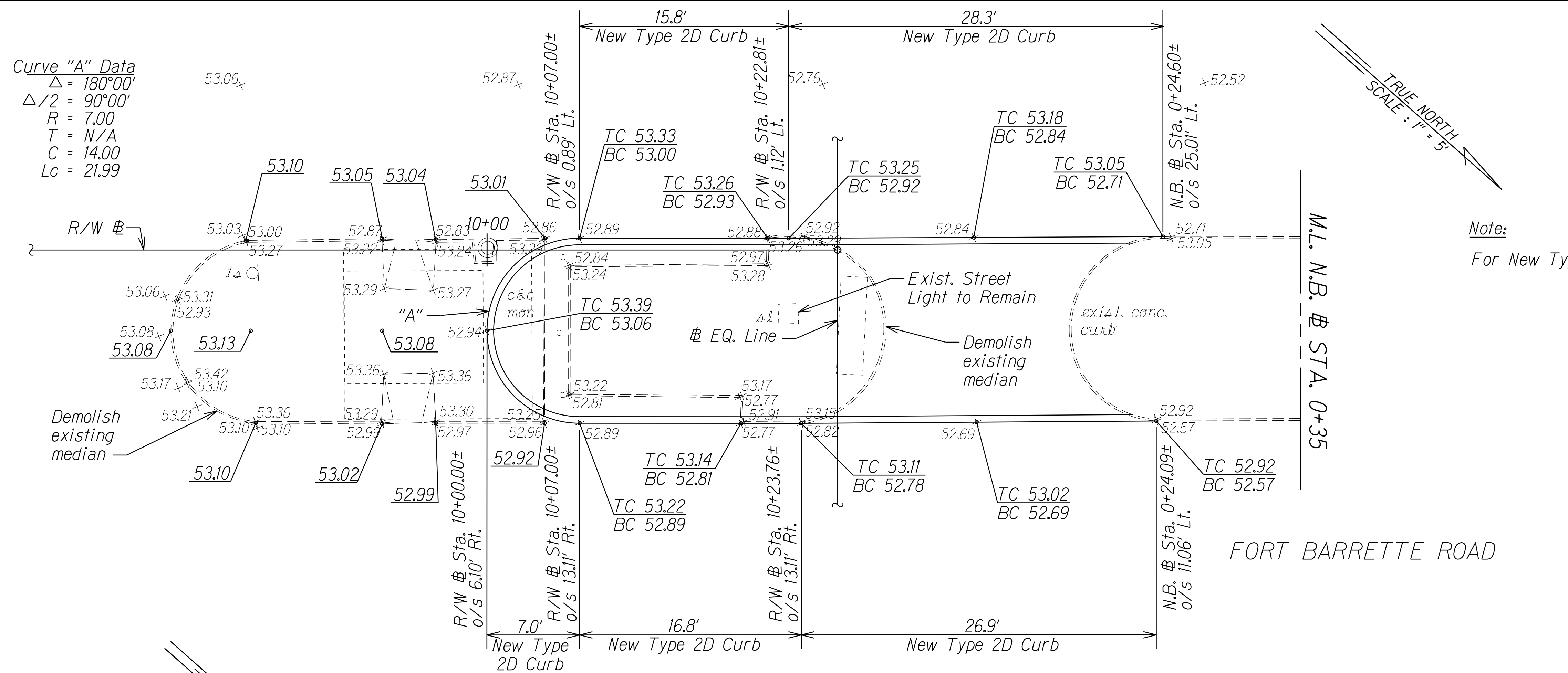
SURVEY PLOTTED BY	DATE
DRAWN BY	DATE
DESIGNED BY	DATE
CHECKED BY	DATE
ORIGINAL PLAN	
NOTE BOOK	
No.	



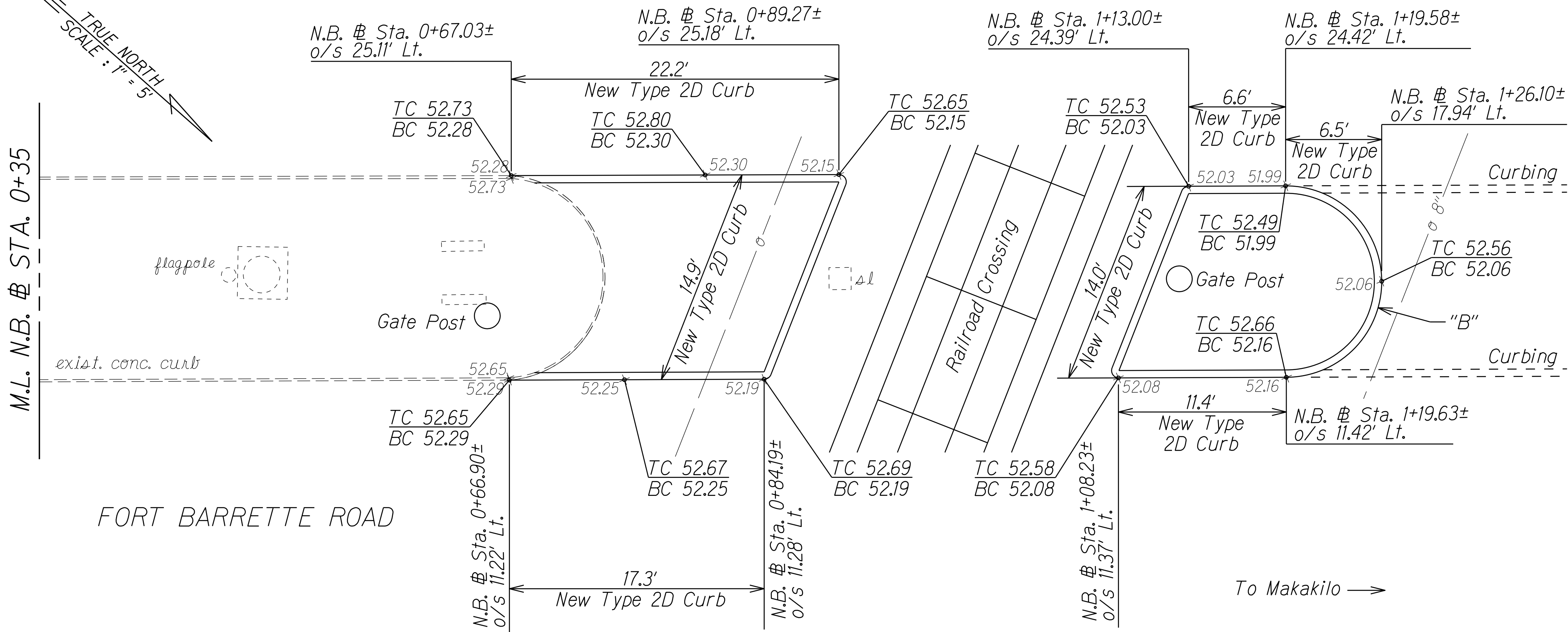




FED. ROAD DIST. NO.	STATE	PROJ. NO.	FISCAL YEAR	SHEET NO.	TOTAL SHEETS
HAWAII	HAW.	901A-01-19	2020	ADD.30	167



Note:  
For New Type 2D Curb details, see Standard Plan D-05.



Curve "B" Data  
 $\Delta = 179^{\circ}58'09''$   
 $\Delta/2 = 89^{\circ}59'04.4''$   
 $R = 6.50$   
 $T = 24,117.97$   
 $C = 13.00$   
 $Lc = 20.42$

**CURBING PLAN**  
R/W # STA. 10+00.00± TO N.B. # STA. 1+26.10± LT.

1	2/10/20	Revised scale shown in title block.
DATE	REVISION	

STATE OF HAWAII  
DEPARTMENT OF TRANSPORTATION  
HIGHWAYS DIVISION

**CURBING PLANS**

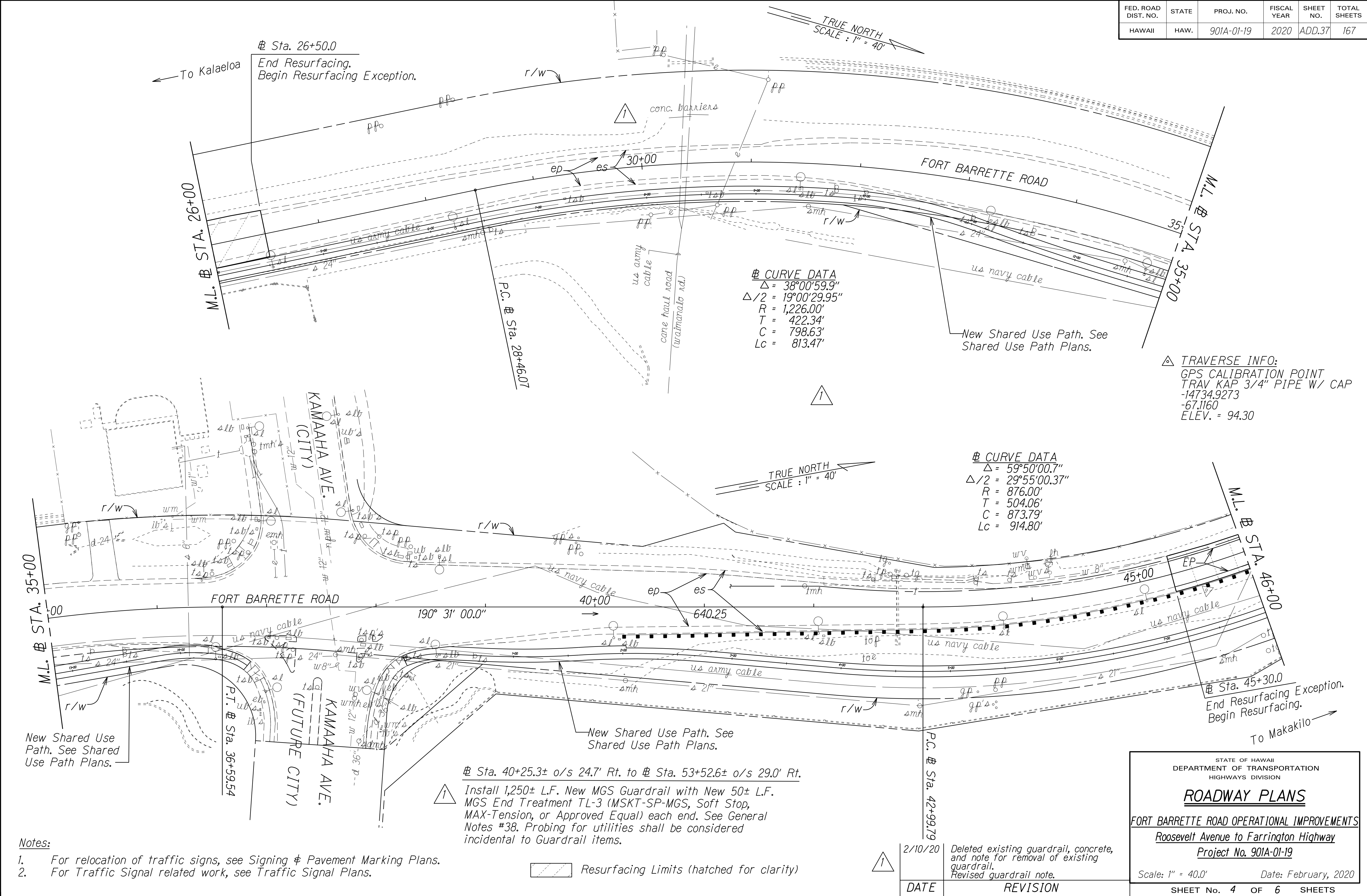
FORT BARRETTE ROAD OPERATIONAL IMPROVEMENTS  
Roosevelt Avenue to Farrington Highway  
Project No. 901A-01-19

Scale: 1" = 5'      Date: February, 2020

SHEET No. C7 OF 10 SHEETS



FED. ROAD DIST. NO.	STATE	PROJ. NO.	FISCAL YEAR	SHEET NO.	TOTAL SHEETS
HAWAII	HAW.	901A-01-19	2020	ADD.37	167



DATE	_____
SURVEY PLOTTED BY	_____
DRAWN BY	_____
DESIGNED BY	_____
CHECKED BY	_____
ORIGINAL PLAN	_____
NOTE BOOK	_____
No.	_____

STATE OF HAWAII  
DEPARTMENT OF TRANSPORTATION  
HIGHWAYS DIVISION

**ROADWAY PLANS**

FORT BARRETTE ROAD OPERATIONAL IMPROVEMENTS

Roosevelt Avenue to Farrington Highway

Project No. 901A-01-19

Scale: 1" = 40.0' Date: February, 2020

SHEET No. 4 OF 6 SHEETS