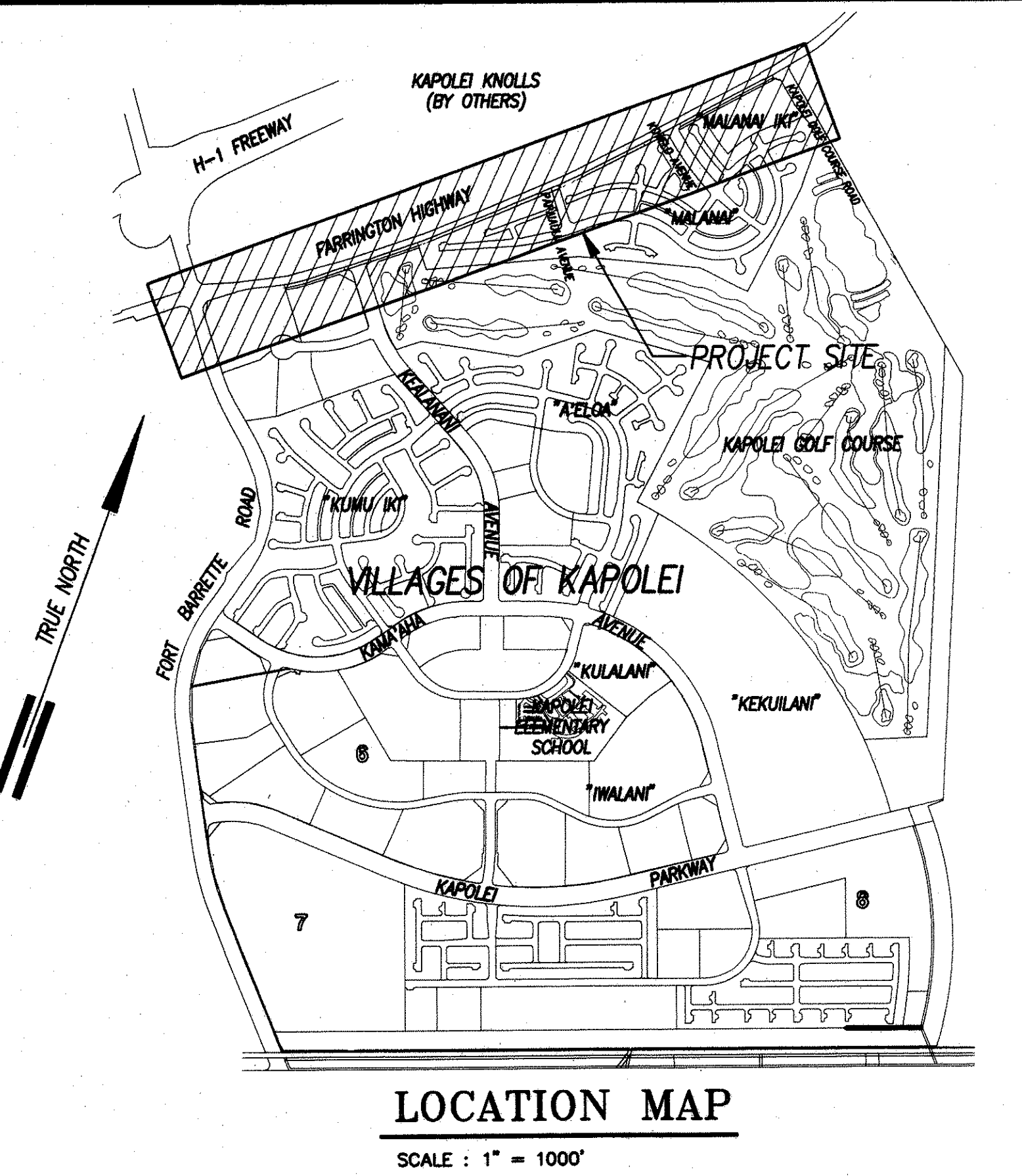
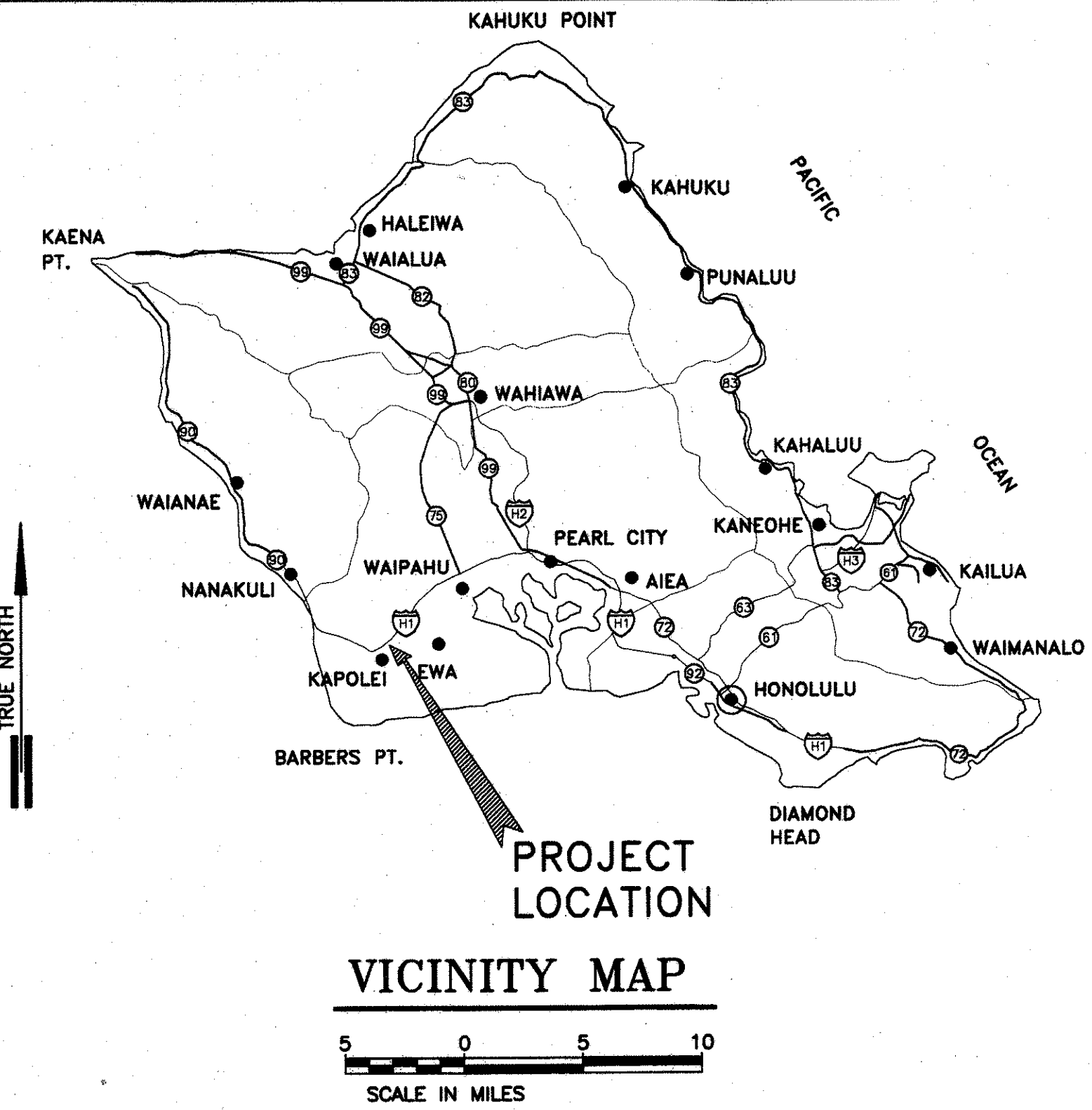
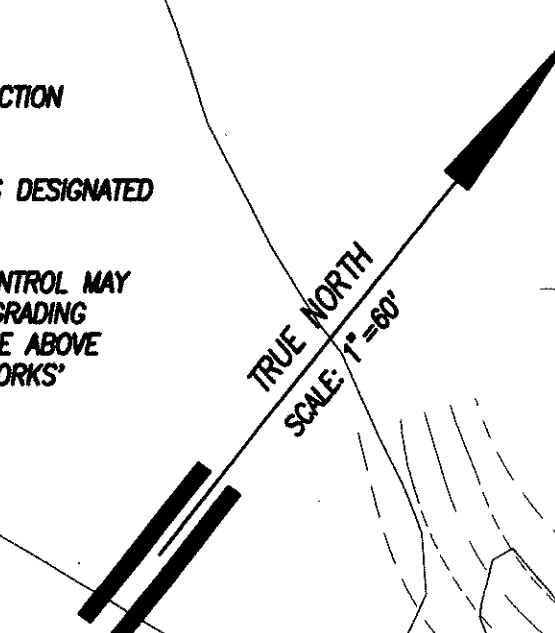


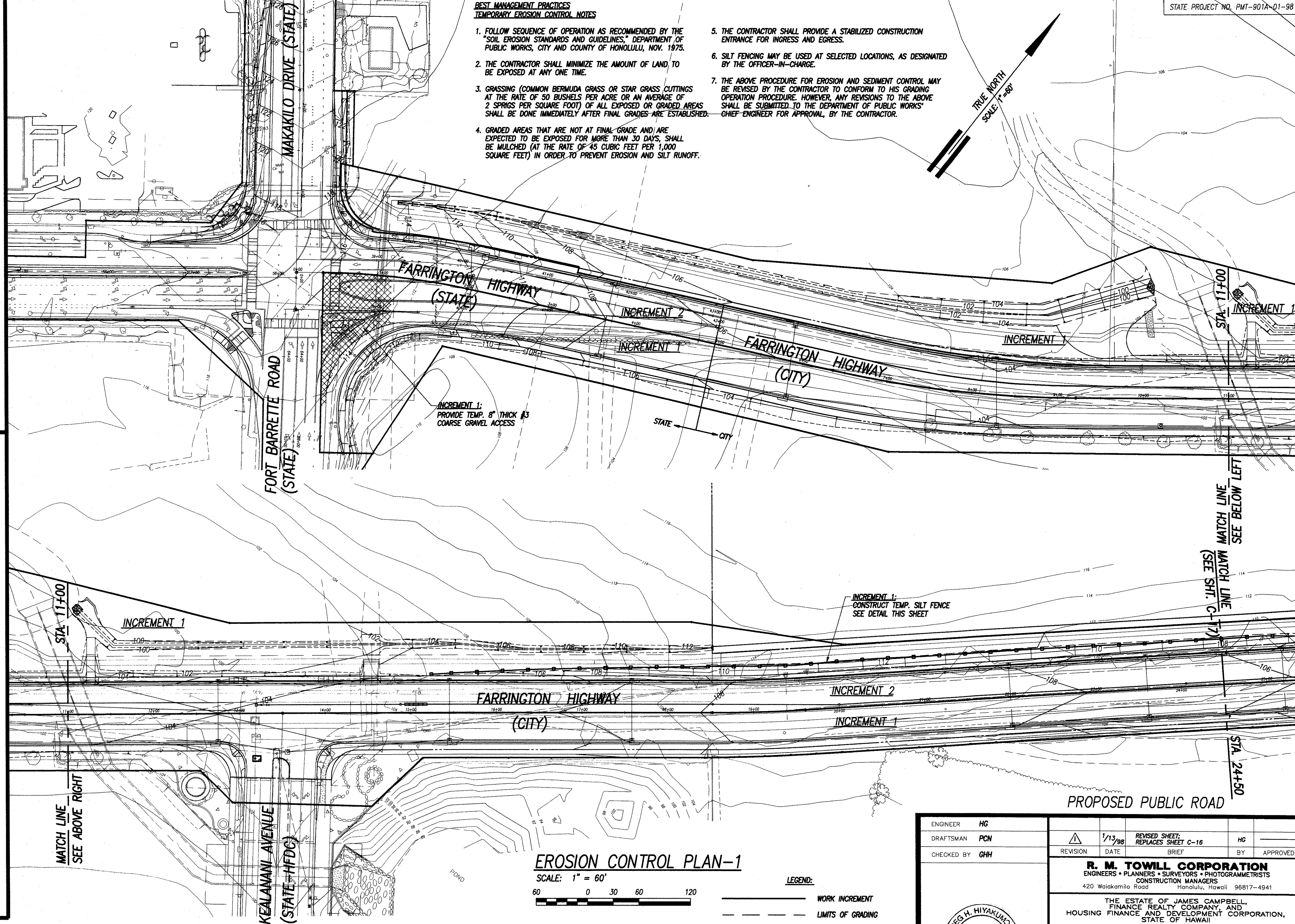
**BEST MANAGEMENT PRACTICES  
TEMPORARY EROSION CONTROL NOTES**

1. FOLLOW SEQUENCE OF OPERATION AS RECOMMENDED BY THE "SOIL EROSION STANDARDS AND GUIDELINES," DEPARTMENT OF PUBLIC WORKS, CITY AND COUNTY OF HONOLULU, NOV. 1975.
2. THE CONTRACTOR SHALL MINIMIZE THE AMOUNT OF LAND TO BE EXPOSED AT ANY ONE TIME.
3. GRASSING (COMMON BERMUDA GRASS OR STAR GRASS CUTTINGS AT THE RATE OF 50 BUSHELS PER ACRE OR AN AVERAGE OF 2 SPRIGS PER SQUARE FOOT) OF ALL EXPOSED OR GRADED AREAS SHALL BE DONE IMMEDIATELY AFTER FINAL GRADES ARE ESTABLISHED.
4. GRADED AREAS THAT ARE NOT AT FINAL GRADE AND ARE EXPECTED TO BE EXPOSED FOR MORE THAN 30 DAYS, SHALL BE MULCHED (AT THE RATE OF 45 CUBIC FEET PER 1,000 SQUARE FEET) IN ORDER TO PREVENT EROSION AND SILT RUNOFF.
5. THE CONTRACTOR SHALL PROVIDE A STABILIZED CONSTRUCTION ENTRANCE FOR INGRESS AND EGRESS.
6. SILT FENCING MAY BE USED AT SELECTED LOCATIONS, AS DESIGNATED BY THE OFFICER-IN-CHARGE.
7. THE ABOVE PROCEDURE FOR EROSION AND SEDIMENT CONTROL MAY BE REVISED BY THE CONTRACTOR TO CONFORM TO HIS GRADING OPERATION PROCEDURE. HOWEVER, ANY REVISIONS TO THE ABOVE SHALL BE SUBMITTED TO THE DEPARTMENT OF PUBLIC WORKS' CHIEF ENGINEER FOR APPROVAL, BY THE CONTRACTOR.



**CONSTRUCTION SCHEDULE:**

INCREMENT	AREA	START OF CONSTRUCTION	START OF GRASSING	FULLY PROTECTED
1	14.3 ACRES	03/02/98	08/02/98	09/01/98
2	6.2 ACRES	09/01/98	01/30/99	03/01/99

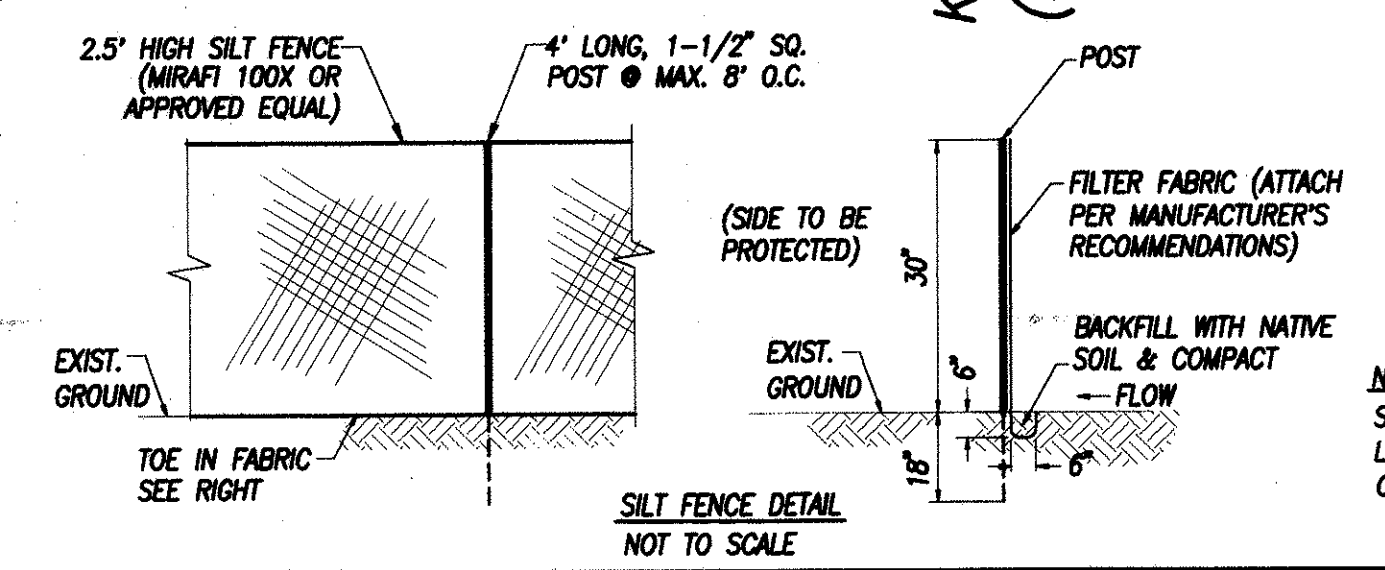


**EROSION CONTROL PLAN-1**

SCALE: 1" = 60'

**LEGEND:**

- WORK INCREMENT
  - LIMITS OF GRADING
  - SILT FENCE
  - GRAVEL ACCESS
- SEE TEMPORARY EROSION CONTROL NOTES THIS SHEET.



NOTE: SILT FENCE TO BE INSTALLED AT LOCATIONS AS DIRECTED BY THE OFFICER-IN-CHARGE.

Approved: *[Signature]*  
Chief, Division of Engineering DPW  
(for erosion control only)

2/25/98  
Date

ENGINEER HG	REVISION 1/13/98	REVISED SHEET REPLACES SHEET C-16	BY HG
DRAFTSMAN PCN	DATE	BRIEF	APPROVED
CHECKED BY GHH			
<b>R. M. TOWILL CORPORATION</b> ENGINEERS • PLANNERS • SURVEYORS • PHOTOGRAMMETRISTS CONSTRUCTION MANAGERS 420 Waikamilo Road Honolulu, Hawaii 96817-4941			
THE ESTATE OF JAMES CAMPBELL, FINANCE REALTY COMPANY, AND HOUSING FINANCE AND DEVELOPMENT CORPORATION, STATE OF HAWAII			
<b>FARRINGTON HIGHWAY IMPROVEMENTS</b> EWA, OAHU, HAWAII TMK: (1ST DIVISION) PORTION OF 9-1-16			
<b>FARRINGTON HIGHWAY EROSION CONTROL PLAN-1</b>			
THIS WORK WAS PREPARED BY ME OR UNDER MY SUPERVISION. <i>[Signature]</i> 1/26/98 SIGNATURE DATE		HDC JOB NO. DEV 93-41 SCALE 1" = 60' DATE JAN 1998	