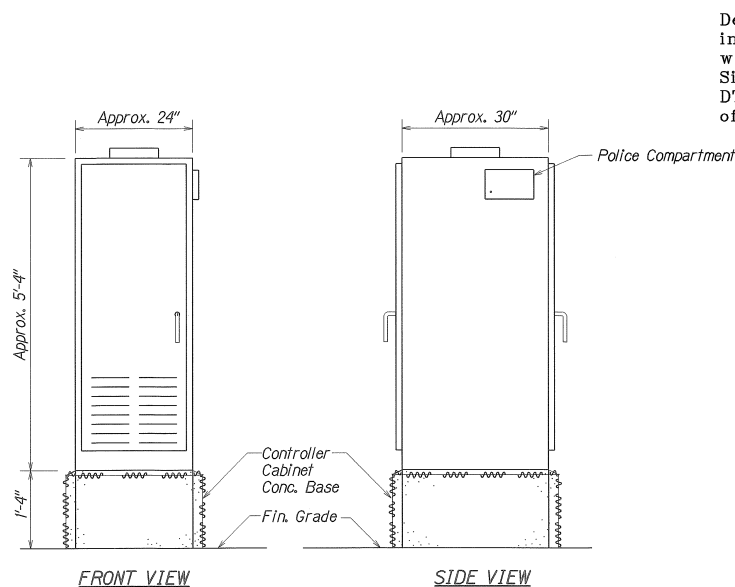


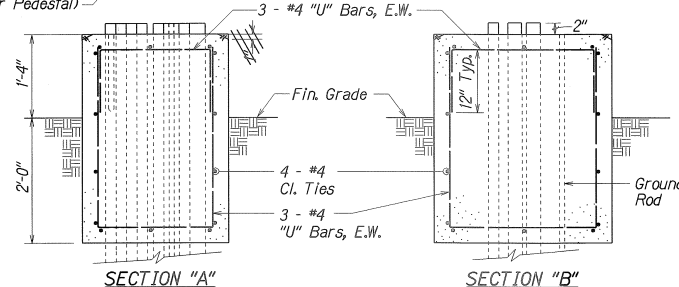
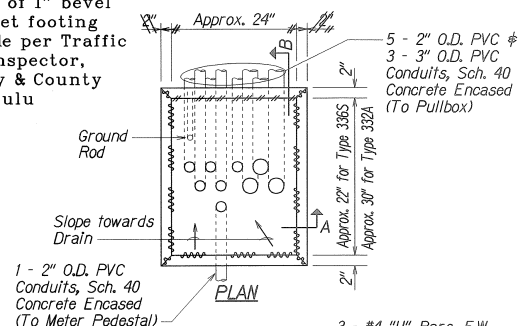
FED. ROAD DIST. NO.	STATE	FED. AID PROJ. NO.	FISCAL YEAR	SHEET NO.	TOTAL SHEETS
HAWAII	HAW.	STP-0750(III)	2000	17	18



**TYPE 332A TRAFFIC SIGNAL  
CONTROLLER CABINET DETAIL**

N.T.S.

Deletion of 1" bevel  
in cabinet footing  
was made per Traffic  
Signal Inspector,  
DTS, City & County  
of Honolulu

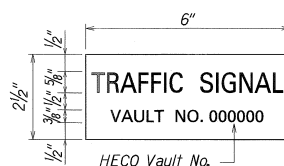


**SECTION "A"  
CONTROLLER CABINET CONCRETE BASE**

N.T.S.

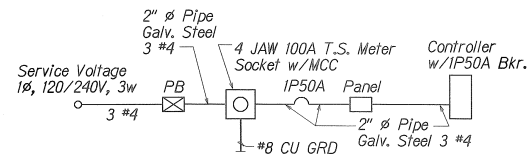
**NOTES:**

1. Use 3-ply laminated flexible plastic, black-white-black thickness: black cap sheet - 0.010", white base sheet - 0.052", black base sheet - 0.010".
2. Attach to Meter Socket using Scotch 3M Brand very high bond (VHB) double coated acrylic foam tape or equivalent.
3. Letters/Numbers shall be 1/16" stroke, (white in color).
4. Letters/Numbers area inscribed by cutting through "black cap sheet" to expose white letters/numbers.



**METER ID TAG DETAIL**

N.T.S.



**ONE LINE DIAGRAM**

**LEGEND FOR AS-BUILT POSTINGS**

- ~~~~~ Squiggly line for as-built deletion
- == Double line for as-built deletion
- Roadway Text for as-built posting

STATE OF HAWAII DEPARTMENT OF TRANSPORTATION HIGHWAYS DIVISION
<b>CONTROLLER CABINET DETAILS</b>
<b>KUNIA ROAD</b>
<b>Traffic Signals at Kunia Regional</b>
<b>SIGNIT Operations Center</b>
<b>Fed. Aid Project No. STP-0750(III)</b>
Not to Scale Date: May, 2000
SHEET No. 1 OF 1 SHEETS

AS-BUILT