

**LEGEND**

4 each Type A Raised Pavement Markers  
Type CL Raised Pavement Markers @ 40'-0" o.c.

4 each Type J Raised Pavement Markers  
Type DL Raised Pavement Markers @ 40'-0" o.c.

8" White Stripe with Type CL Raised Pavement Markers @ 20'-0" o.c. (~~Tape-Type I~~)  
(Thermoplastic Extrusion)

4" Double Solid Yellow Stripes with Type DL Raised Pavement Markers @ 20'-0" o.c.  
(Tape ~ Type I)

4" Double Solid Yellow Stripes with Type HL Raised Pavement Markers @ 20'-0" o.c.  
(Tape-Type II or Thermoplastic Extrusion)

4" Yellow Edge Stripe with Type HL Raised Pavement Markers @ 40'-0" o.c. (Tape-Type II or Thermoplastic Extrusion)

4" Double Solid White Stripes with Type CL Raised Pavement Markers @ 20'-0" o.c.  
(Tape ~ Type I)

Lane Change Restriction Marking  
4 each Type A Raised Pavement Markers  
Type CL Raised Pavement Markers @ 20'-0" o.c.  
4" White Stripe (Tape-Type I)

4" White Edge Stripe (Tape-Type II or Thermoplastic Extrusion)

4" White Guide Lines (Thermoplastic Extrusion)

Transverse Median Marking (Tape-Type II or Thermoplastic Extrusion)

Transverse Shoulder Marking (Tape-Type II or Thermoplastic Extrusion)

Channelizing Island or Deceleration Lane Gore (Tape-Type II or Thermoplastic Extrusion)

Crosswalk and Stop Line. All Stop Lines shall be 10'-0" from Crosswalk unless otherwise noted. The circled number indicates the number of lanes for payment. (Thermoplastic Extrusion)

Pavement Arrow (Tape-Type I)

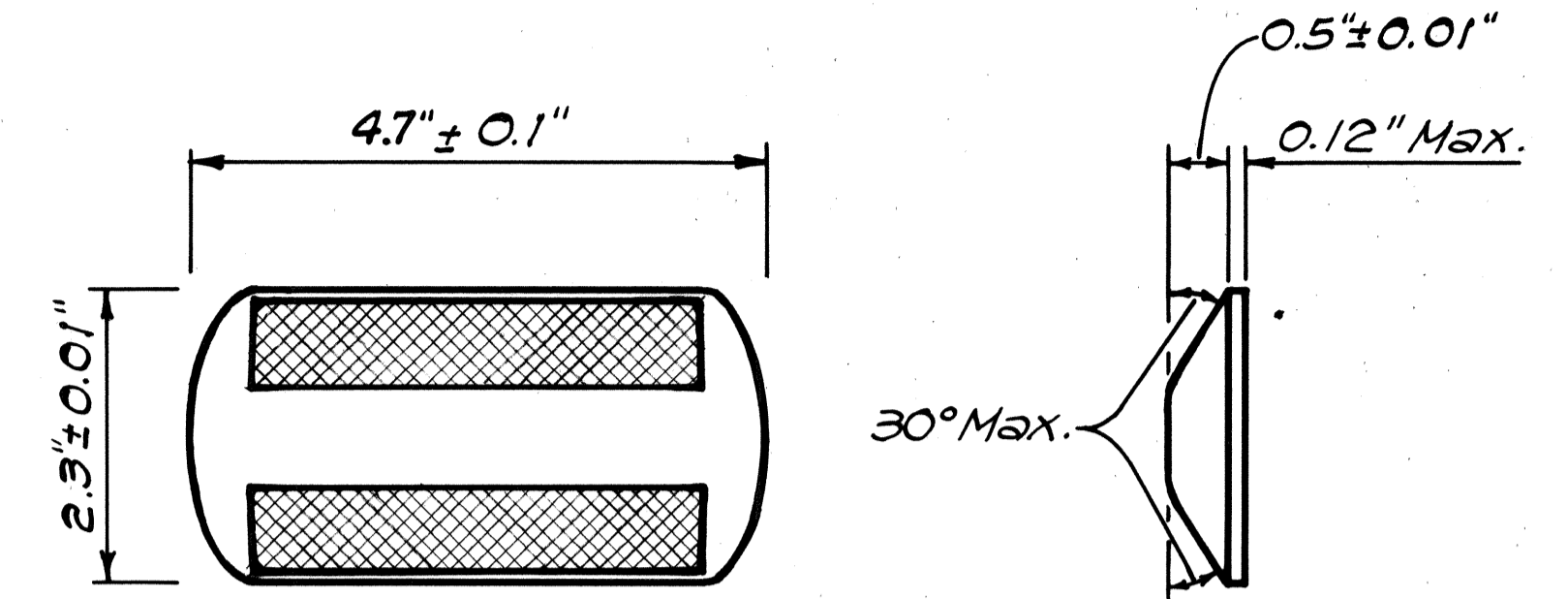
**STOP** Pavement Word (Tape-Type I)

Extension of Edge Line, 4" Wide x 2'-0" Long White Stripe @ 10'-0" o.c. w/Type "CL" Markers @ 40'-0" o.c. (Thermoplastic Extrusion)

**NOTES**

1. Layout of pavement markings and striping shall be done by the Contractor and approved by the Engineer prior to any installation work.
2. Existing pavement markings not incorporated in the final traffic pattern shall be removed as directed by the Engineer. Costs shall be incidental to the various pavement marking items.
3. Raised pavement markers shall not be installed within crosswalks.
4. Details of Type C, Type D and Type H Markers on Standard Plan Nos. TE-30, TE-31 and TE-32 shall be deleted and replaced with details of Type CL, Type DL and Type HL Markers as shown on this sheet. All references to Type C, Type D and Type H Markers in the plans shall mean Type CL, Type DL and Type HL Markers.
5. Final locations of all signs shall be approved by the Engineer prior to any installation work.
6. Existing signs that are to be replaced shall not be removed until new signs are installed as replacements, or the messages are no longer necessary.
7. Existing signs not shown on these plans shall remain as posted unless otherwise directed by the Engineer. Removal and disposal of existing signs and/or posts as designated on these plans shall be incidental to the various signing items.
8. Backing for all new Regulatory and Warning Signs shall not be spliced.
9. All pavement striping shall be as noted on the legend and/or plans

FED. ROAD DIST. NO.	STATE	PROJ. NO.	FISCAL YEAR	SHEET NO.	TOTAL SHEETS
HAWAII	HAW.	7500A-01-88M	1988	8	12



**TYPE CL**  
Red-Clear Reflective Marker  
or  
**TYPE DL**  
Two-Way Yellow Reflective Marker  
or  
**TYPE HL**  
One-Way Yellow Reflective Marker  
Not to Scale

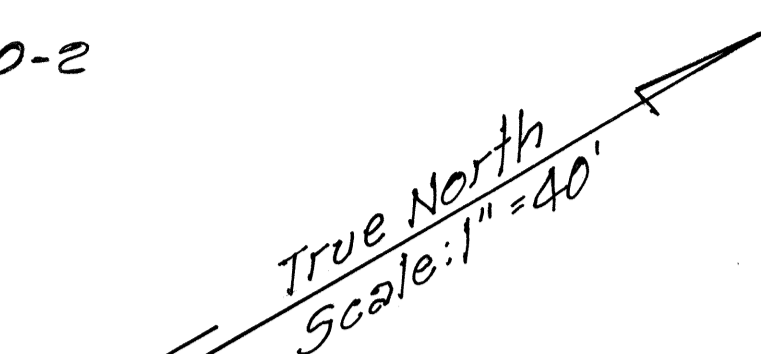
SURVEY PLOTTED BY	DATE
DRAWN BY	
TRACED BY	
QUANTITIES BY	
CHECKED BY	
ORIGINAL PLAN	
NOTE BOOK	
No.	

STATE OF HAWAII  
DEPARTMENT OF TRANSPORTATION  
HIGHWAYS DIVISION  
**PAVEMENT MARKINGS/LEGEND,  
NOTES AND DETAILS**  
KUNIA ROAD RESURFACING  
URBAN BOUNDARY TO WILIKINA DRIVE  
PROJ. No. 7500A-01-88M  
Scale: Not to Scale Date: Mar., 1988  
SHEET No. 71 OF 5 SHEETS

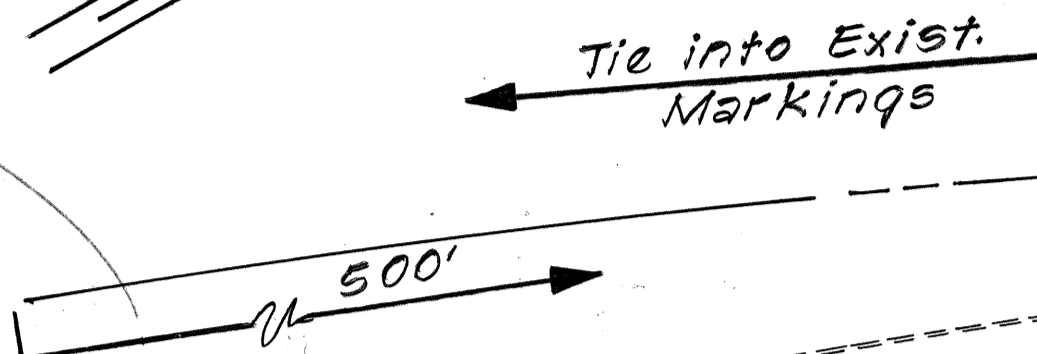
FED. ROAD DIST. NO.	STATE	PROJ. NO.	FISCAL YEAR	SHEET NO.	TOTAL SHEETS
HAWAII	HAW.	7500A-01-88M	1988	9	12

Install w/Posts  
**END CONSTRUCTION** CG-20-2

Install New Sign w/Post



Install w/Posts  
**ROAD CONSTRUCTION AHEAD** CW-20-1d

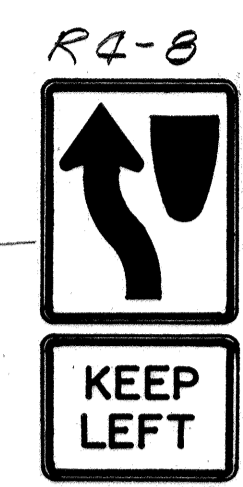
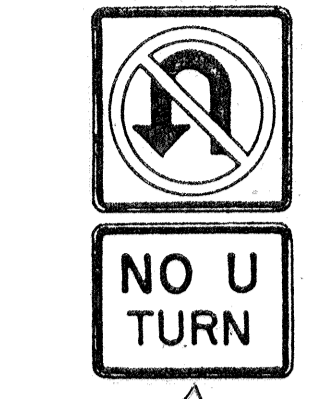


4" Yellow Stripe w/Type "HL" Markers @ 40' o.c.

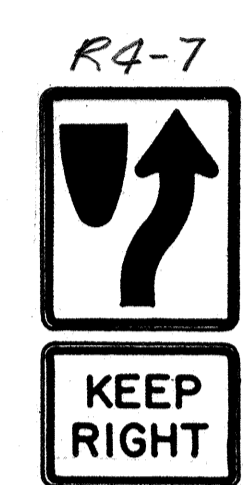
8" White Stripe w/Type "CL" Markers @ 20' o.c.

4" White Edge Stripe

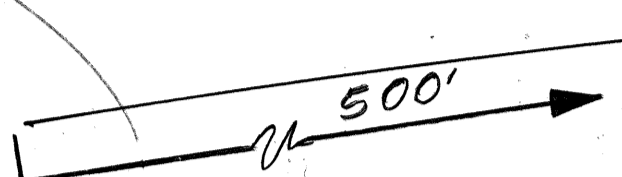
4" Yellow Guide Line



Remove Exist. Sign & Install New Sign on Exist. Post



Install New Sign w/Post



Remove Exist. Sign & Post and Install New Sign w/Post & Reflector Marker



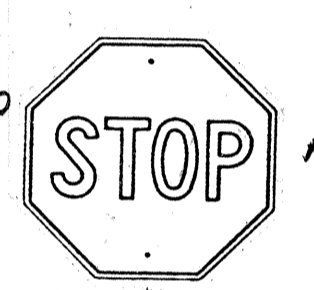
RM-0

4" White Edge Stripe  
 4" White Guide Line

Channelize Island  
 4" Yellow Stripe w/Type "HL" Markers @ 20' o.c.

WHEELER FIELD KUNIA GATE

Remove Exist. Sign & Install New Sign on Exist. Post



R1-1

Tie into Exist. Marking

SCHOFIELD BARRACKS LYMAN GATE



R3-4

Remove Exist. Sign & Post and Install New Sign w/Post

4" Yellow Stripe w/Type "HL" Markers @ 20' o.c.

4" Yellow Stripe w/Type "HL" Markers @ 40' o.c.

4" White Edge Stripe

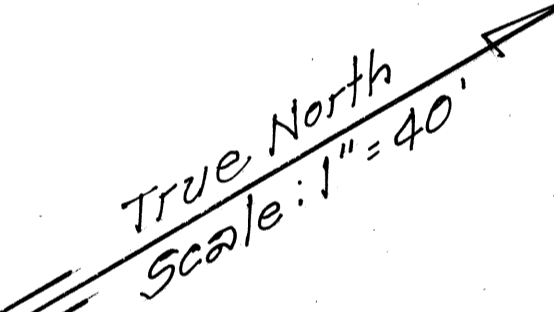
4" Yellow Guide Line

4" White Edge Stripe  
 4" White Guide Line



W2-2

Install New Sign w/Post



M.L. # STA. 15+00

4" White Guide Line

Extension of Edge Line 2' Stripe @ 10' o.c. w/Type "CL" Markers @ 40' o.c.

8" White Stripe w/Type "CL" Markers @ 20' o.c.



R3-4

Remove Exist. Sign & Post and Install New Sign w/Post



R8-12

Remove Exist. Sign and Install New Sign on Exist. Hwy. Light Pole

4" Yellow Stripe w/Type "HC" Markers @ 40' o.c.

4" White Edge Stripe

M.L. # STA. 24+00

SURVEY PLOTTED BY	DATE
DRAWN BY	
DESIGNED BY	
QUANTITIES BY	
CHECKED BY	
ORIGINAL PLAN	
NOTE BOOK	
NO.	

STATE OF HAWAII  
 DEPARTMENT OF TRANSPORTATION  
 HIGHWAYS DIVISION

**SIGNING & PAVEMENT MARKING PLAN**

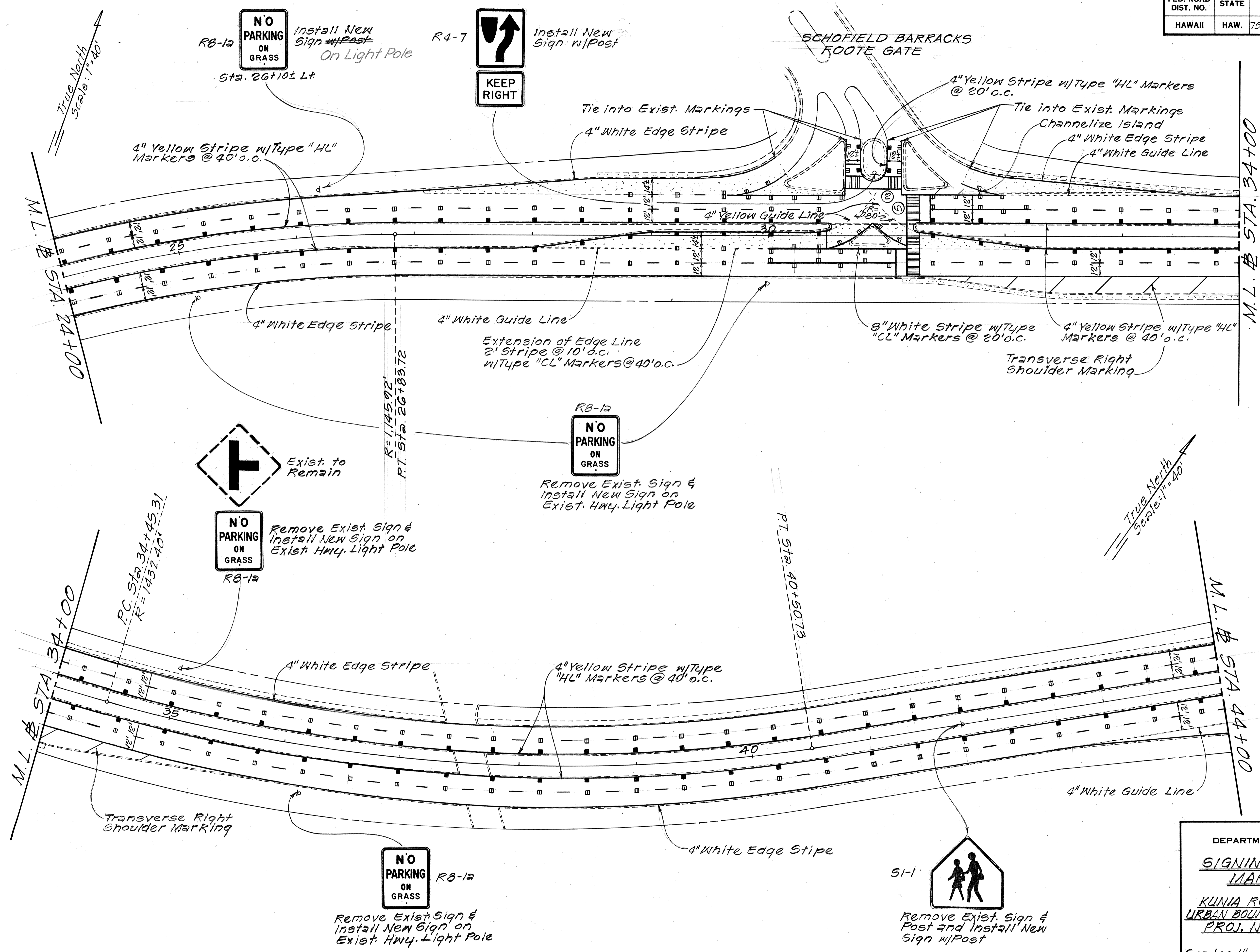
KUNIA ROAD RESURFACING - URBAN BOUNDARY TO WILIKINA DRIVE  
 PROJ. No. 7500A-01-88M

Scale: 1" = 40' Date: Mar., 1988

SHEET No. 72 OF 5 SHEETS

D-4-8

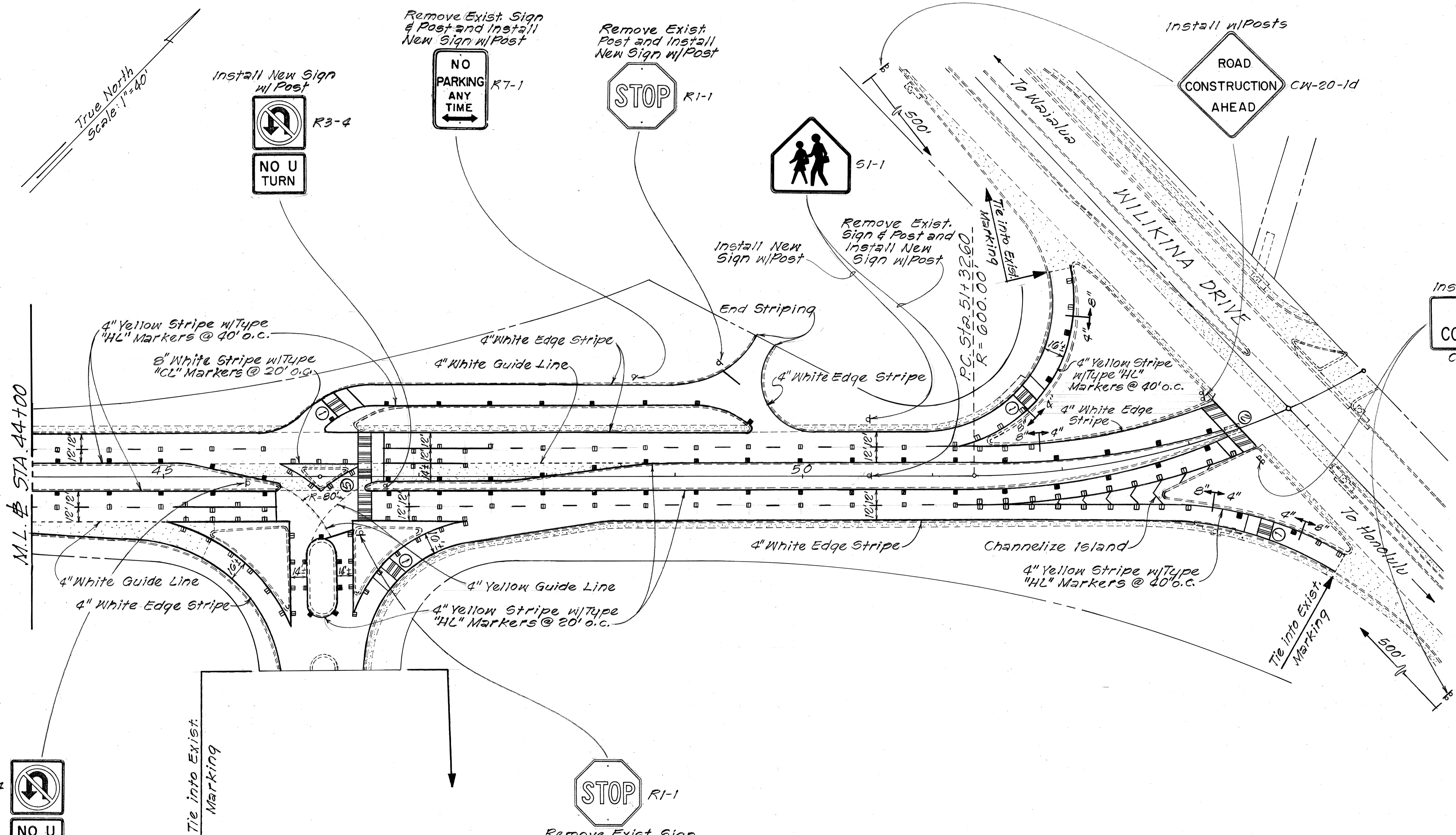
FED. ROAD DIST. NO.	STATE	PROJ. NO.	FISCAL YEAR	SHEET NO.	TOTAL SHEETS
HAWAII	HAW.	7500A-01-BBM	1988	10	12



SURVEY PLOTTED BY	DATE
DRAWN BY	
DESIGNED BY	
QUANTITIES BY	
CHECKED BY	
ORIGINAL PLAN	
NOTE BOOK	
NO.	

STATE OF HAWAII  
DEPARTMENT OF TRANSPORTATION  
HIGHWAYS DIVISION  
**SIGNING & PAVEMENT MARKING PLAN**  
KUNIA ROAD RESURFACING  
URBAN BOUNDARY TO WILIKINA DRIVE  
PROJ. No. 7500A-01-BBM  
Scale: 1" = 40' Date: Mar., 1988  
SHEET No. 73 OF 5 SHEETS

FED. ROAD DIST. NO.	STATE	PROJ. NO.	FISCAL YEAR	SHEET NO.	TOTAL SHEETS
HAWAII	HAW.	7500A-01-88M	1988	11	12







SURVEY PLOTTED BY	DATE
DRAWN BY	
DESIGNED BY	
QUANTITIES BY	
CHECKED BY	
ORIGINAL PLAN	
NOTE BOOK	
NO.	

STATE OF HAWAII  
DEPARTMENT OF TRANSPORTATION  
HIGHWAYS DIVISION  
**SIGNING & PAVEMENT MARKING PLAN**  
KUNIA ROAD RESURFACING  
URBAN BOUNDARY TO WILIKINA DRIVE  
PROJ. No. 7500A-01-88M  
Scale: 1"=40' Date: Mar., 1988  
SHEET No. 74 OF 5 SHEETS

*Kunua Rd Resurf. Log*

PAVEMENT MARKING SUMMARY	
DESCRIPTION	QUANTITY
<b>PAVEMENT MARKERS</b>	
Type A	760 Ea.
Type CL	420 "
Type HL	260 "
<b>TAPE ~ TYPE I</b>	
8" Pavement Stripe (White)	900 L.F.
<b>TAPE ~ TYPE II OR THERMO-PLASTIC EXTRUSION</b>	
4" Pavement Stripe (White)	9,600 L.F.
4" " " (Yellow)	9,400 "
8" " " (White)	3,400 "
12" " " (White)	300 "
<b>THERMOPLASTIC EXTRUSION</b>	
4" Pavement Stripe (White)	380 L.F.
4" " " (Yellow)	170 "
12" " " (White)	440 "
Crosswalk Markings	30 Lane

TRAFFIC SIGN SUMMARY					
SIGN No.	MESSAGE	QUANTITY			
		10 Sq. Ft. or Less		Greater than 10 Sq. Ft.	
		w/Post	w/o Post	w/Post	w/o Post
R1-1	STOP	2	1		
R3-4	 NO U TURN	6			
R4-7	 KEEP RIGHT	3			
R4-8	 KEEP LEFT		1		
R7-1	NO PARKING ANYTIME ←	1			
R8-1a	NO PARKING ON GRASS	1	5		
S1-1		3			
W2-2	T	1			

CONSTRUCTION SIGN SUMMARY			
SIGN No.	MESSAGE	QUANTITY	
		w/o Post	w/Post
CG-20-2	END CONSTRUCTION		3
CW-20-1d	ROAD CONSTRUCTION AHEAD		3
	TOTAL		6

SURVEY PLOTTED BY	DATE
DRAWN BY	
TRACED BY	
DESIGNED BY	
CHECKED BY	
NOTE BOOK	
NO.	