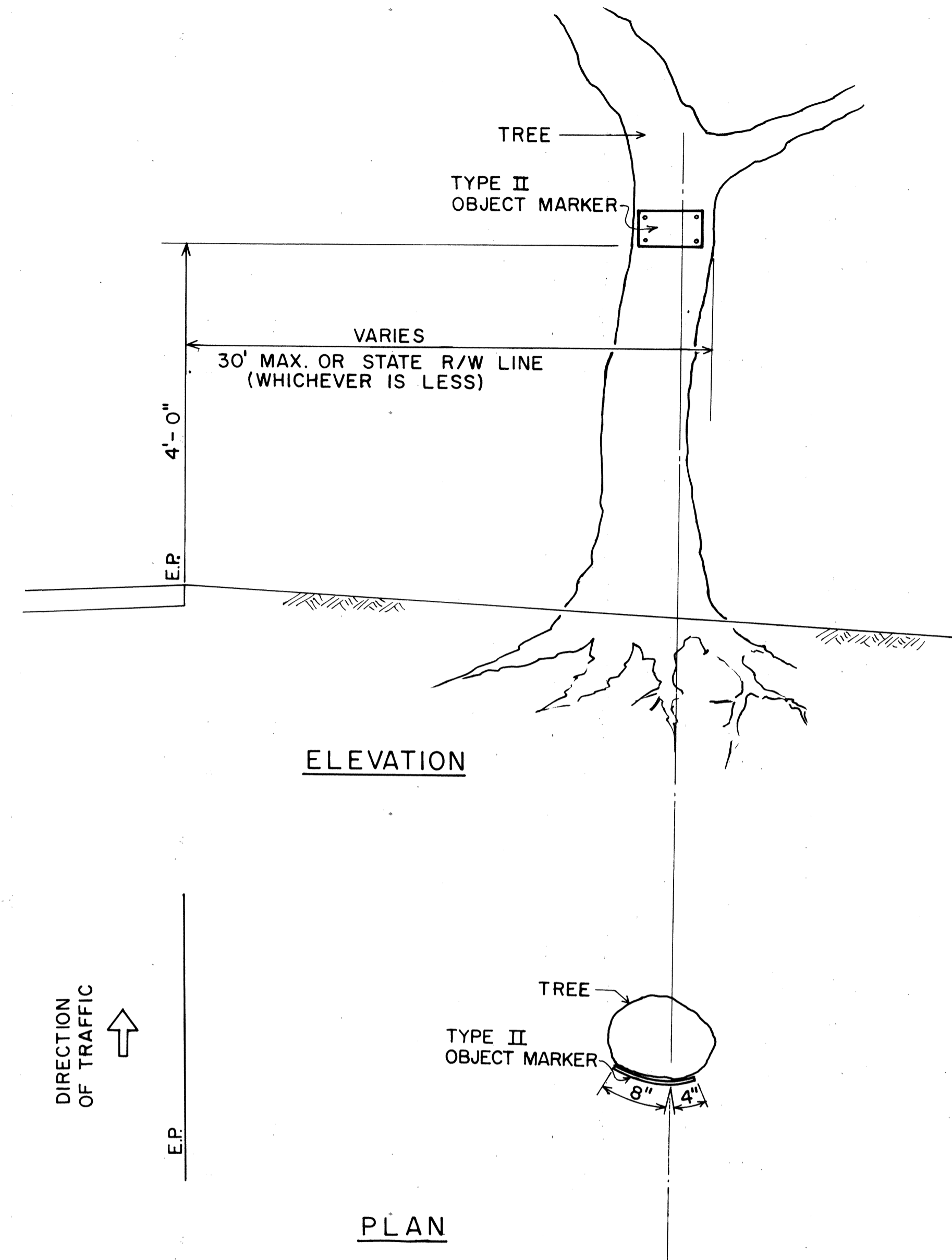
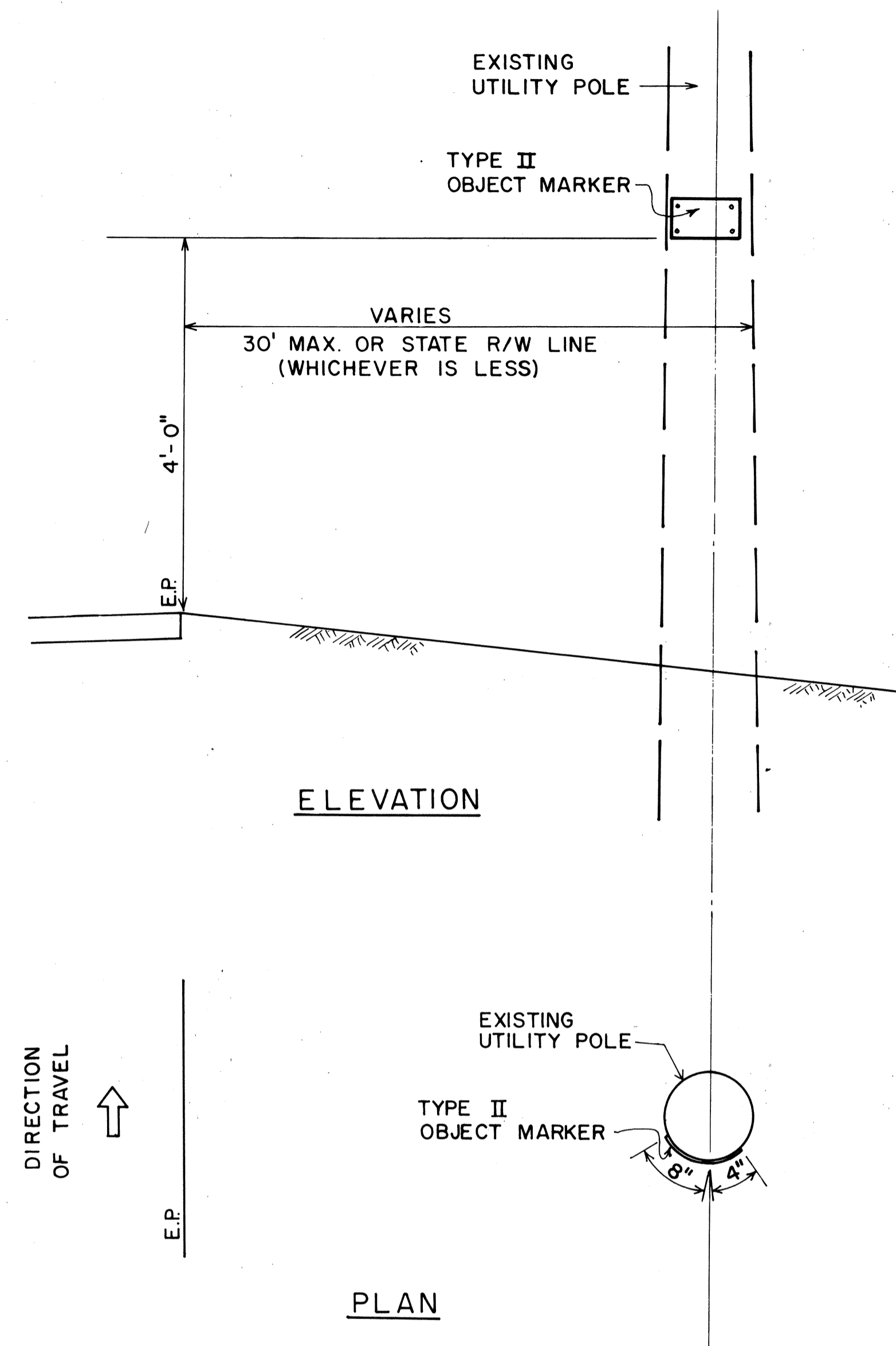


FED. ROAD DIST. NO.	STATE	FED. AID PROJ. NO.	FISCAL YEAR	SHEET NO.	TOTAL SHEETS
HAWAII	HAW.	SR-0750(a)	1983	17	27

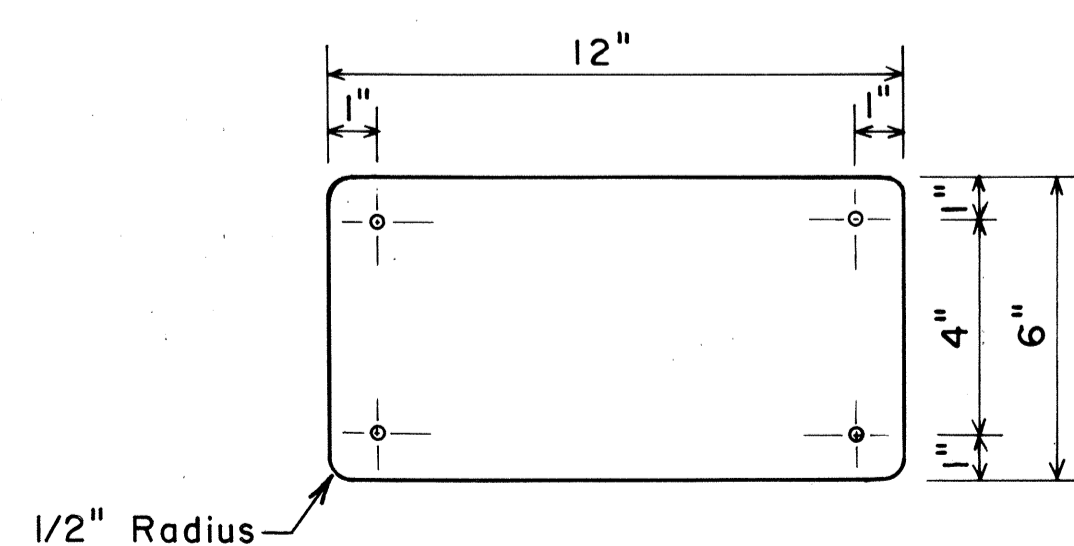
GENERAL NOTES

- Type II Object Markers shall be of amber reflective sheeting material overlaid on 0.020" aluminum sheeting.
- Type II Object Markers shall be mounted on utility poles and trees, as shown on the plans, with 1 3/4" galvanized roofing nail (4 ea.).
- The Contractor shall prepare the surface (of the utility pole or the tree etc.), on which the Type II Object Marker is to be placed to provide the most optimum reflecting surface to the motorist.
- Branches of trees which will obscure the object markers shall be trimmed. (Payment shall be incidental to Contract Item No. 621.4800 Type II Object Markers.)
- All objects (utility poles or trees) that are within the State highway right of way and within 30 feet of the roadway edge of pavement shall be marked.
- All objects to be marked will be determined in the field by the Engineer.
- Objects such as concrete posts, concrete or rock walls and boxes, metal posts (greater than 2 inches in diameter), or metal boxes shall be marked with post mounted object markers. Post mounted Type II Object Markers shall conform to the following requirements:
 - It shall consist of amber reflective sheeting material overlaid on 0.063 inch thick sheet aluminum backing of the dimensions shown on the plans.
 - It shall be mounted on 1/2" x 1/2", 12-gage square tube posts with 1/4" x 2" galv. bolts, nuts, and washers. Galvanized flanged 1/8" x 3/16" channel posts, 2 lbs. per ft., may be used as an option.



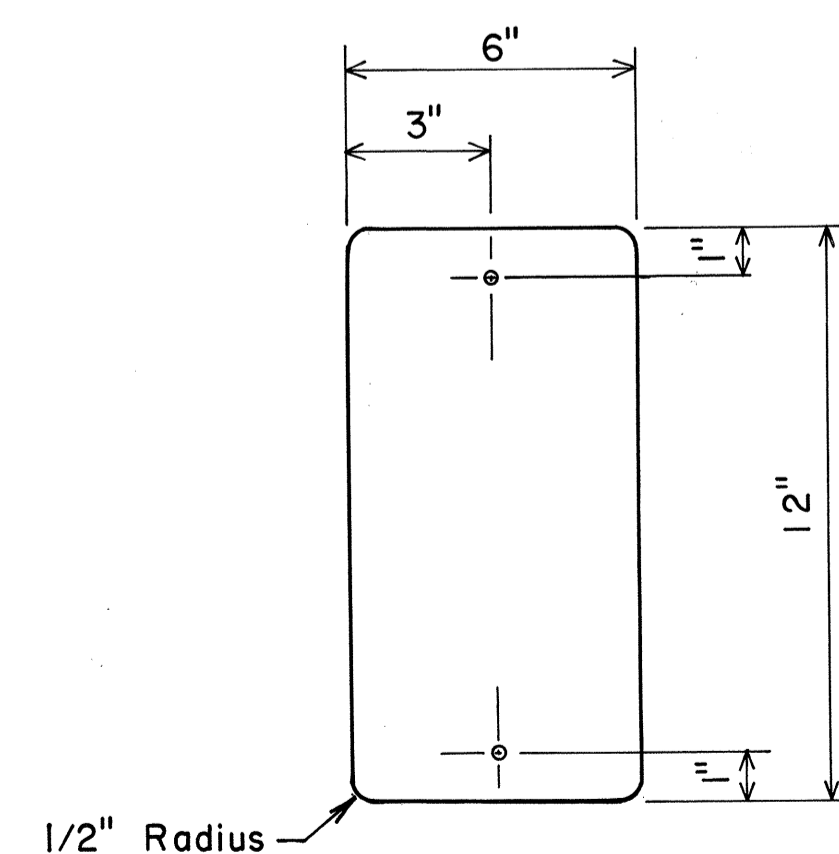
TYPICAL TYPE II OBJECT MARKER MOUNTING DETAIL

Not To Scale



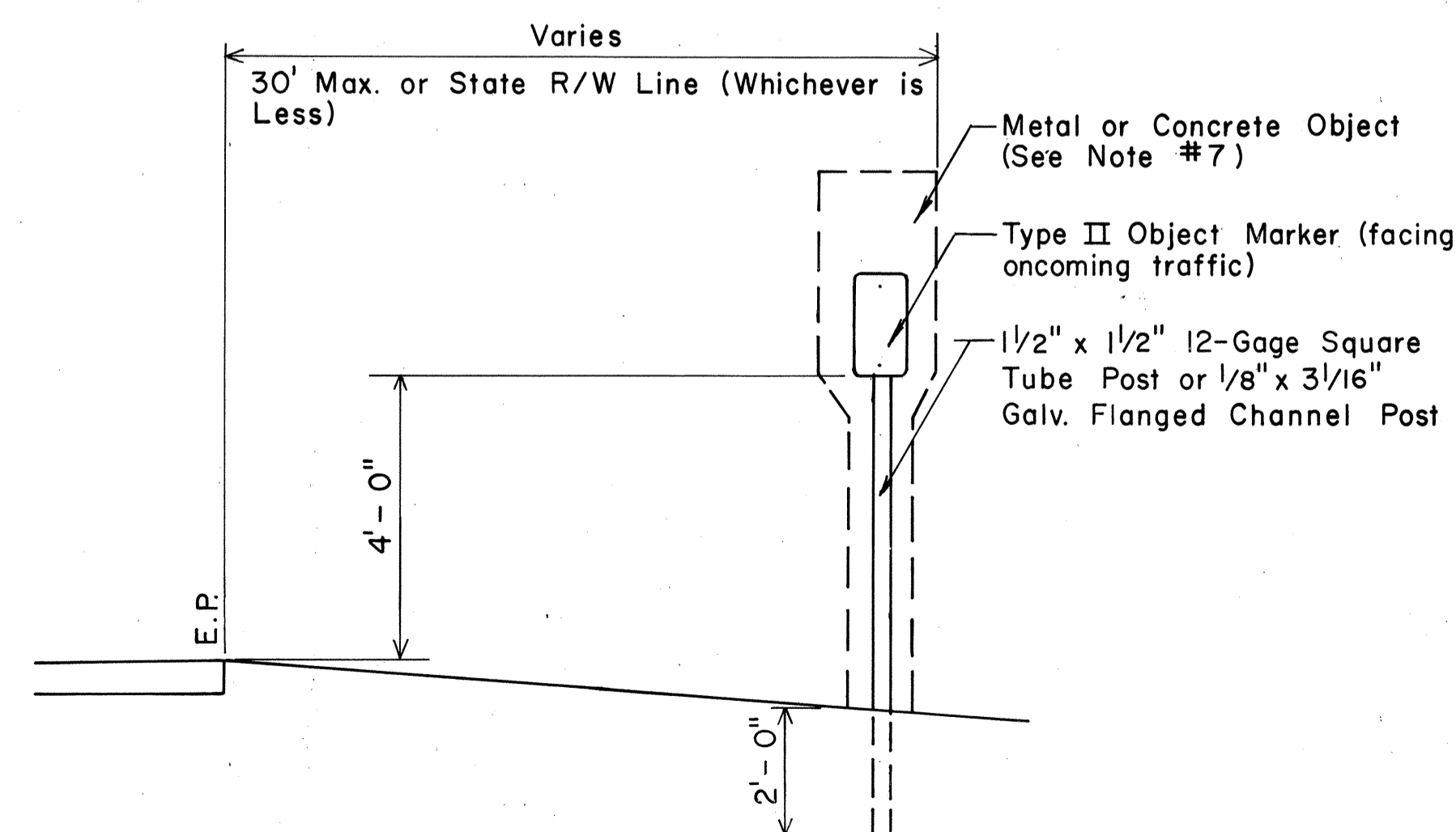
TYPE II OBJECT MARKER

Not To Scale



TYPE II OBJECT MARKER POST MOUNTED

Not To Scale



TYPE II POST MOUNTED OBJECT MARKER DETAIL

Not To Scale

ORIGINAL PLAN	DATE
SURVEY PLOTTED BY	
DRAWN BY	
DESIGNED BY	
CHECKED BY	
No.	

STATE OF HAWAII
DEPARTMENT OF TRANSPORTATION
LAND TRANSPORTATION FACILITIES DIVISION

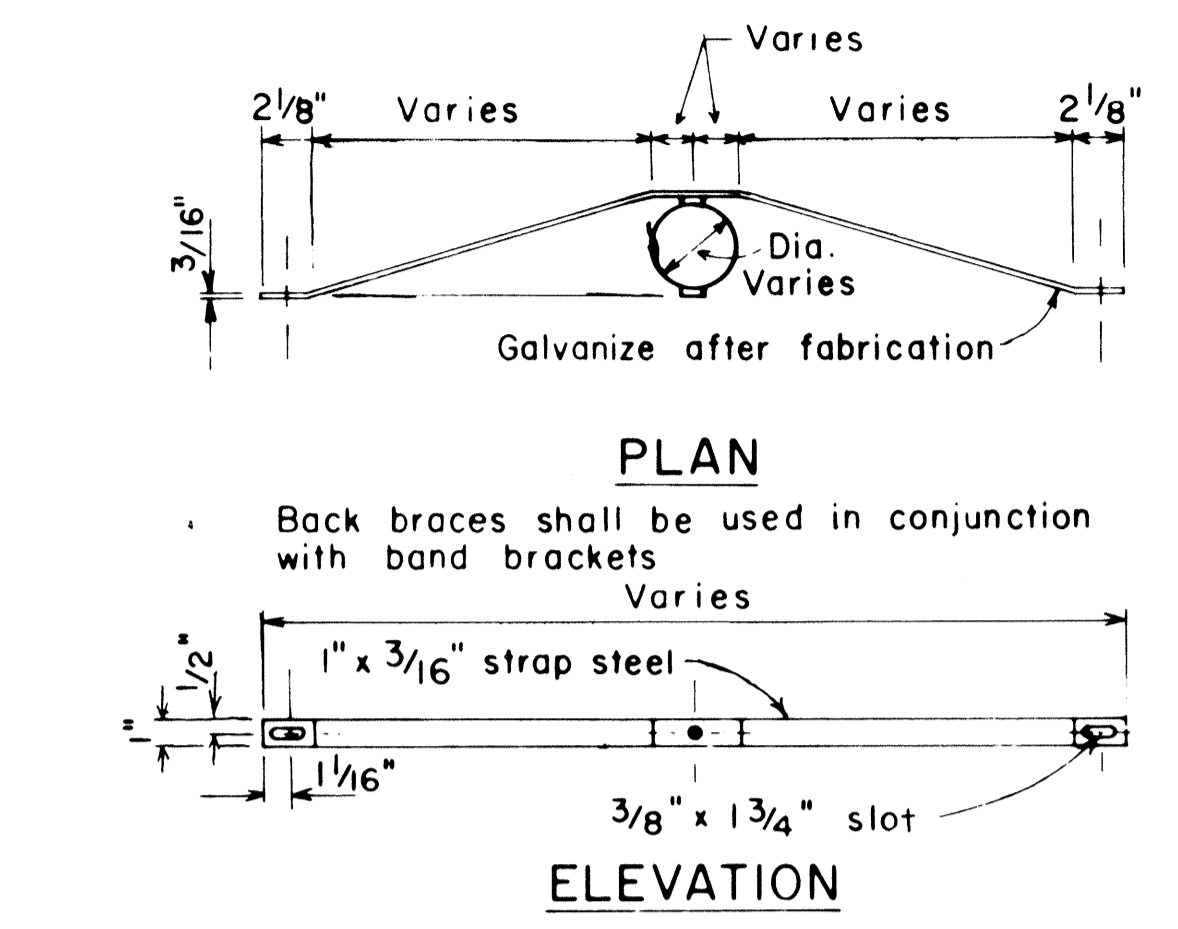
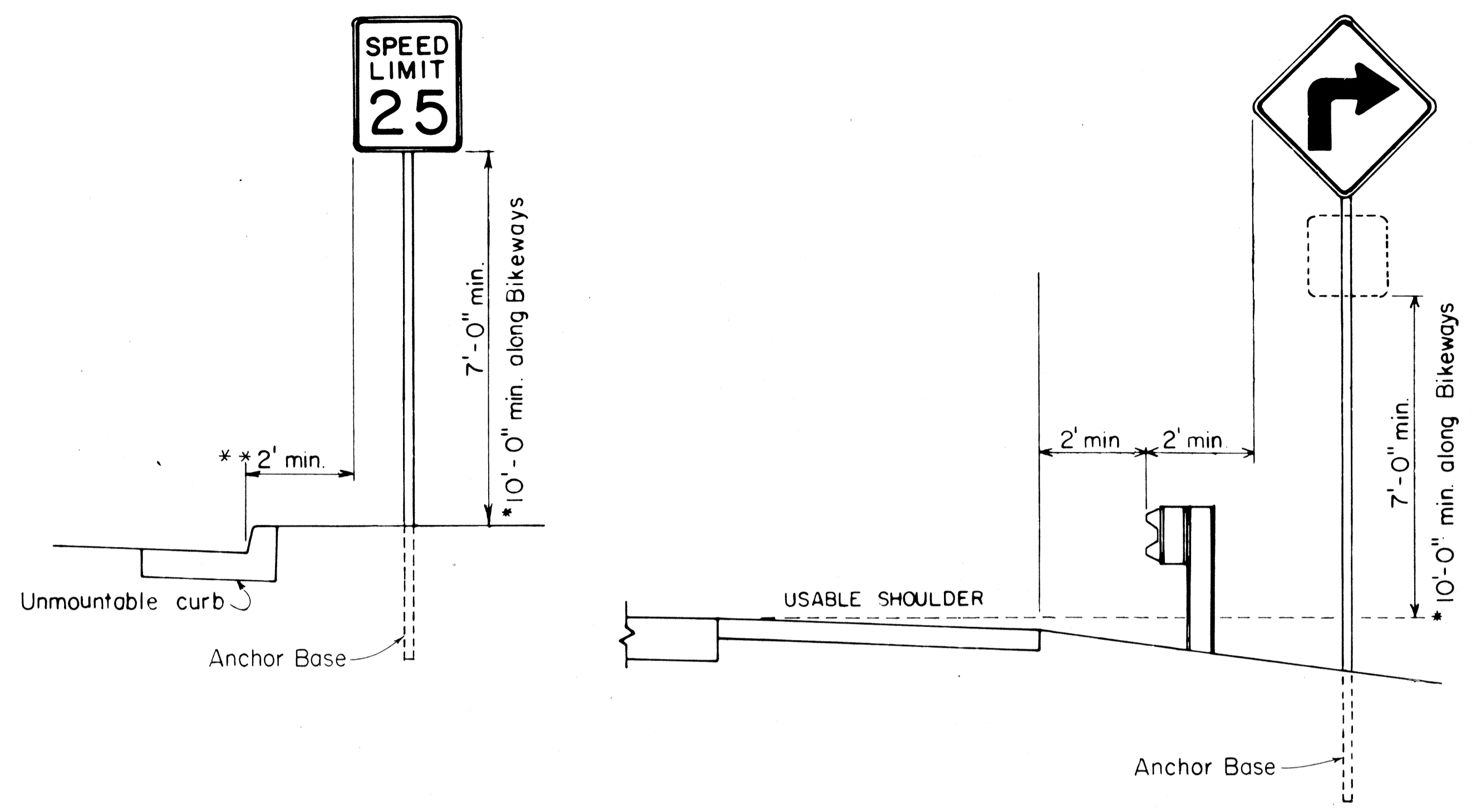
TYPICAL DETAILS
TYPE II OBJECT MARKERS

SCALE: AS SHOWN DATE: _____
SHEET NO. / OF // SHEETS

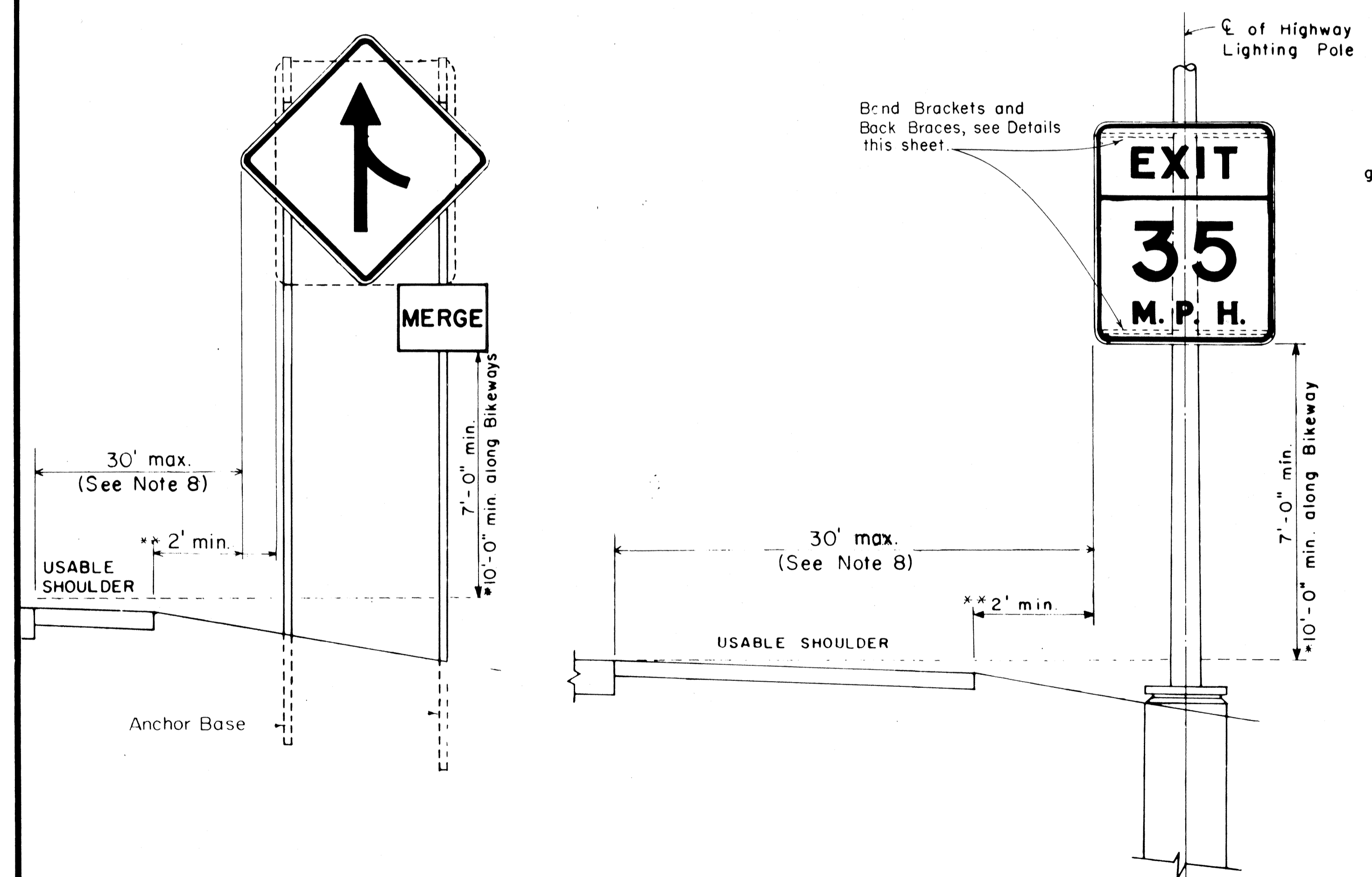
FED. ROAD DIST. NO.	STATE	FED AID PROJ. NO.	FISCAL YEAR	SHEET NO.	TOTAL SHEETS
HAWAII	HAW.	SR0750(B)	1983	18	27

GENERAL NOTES

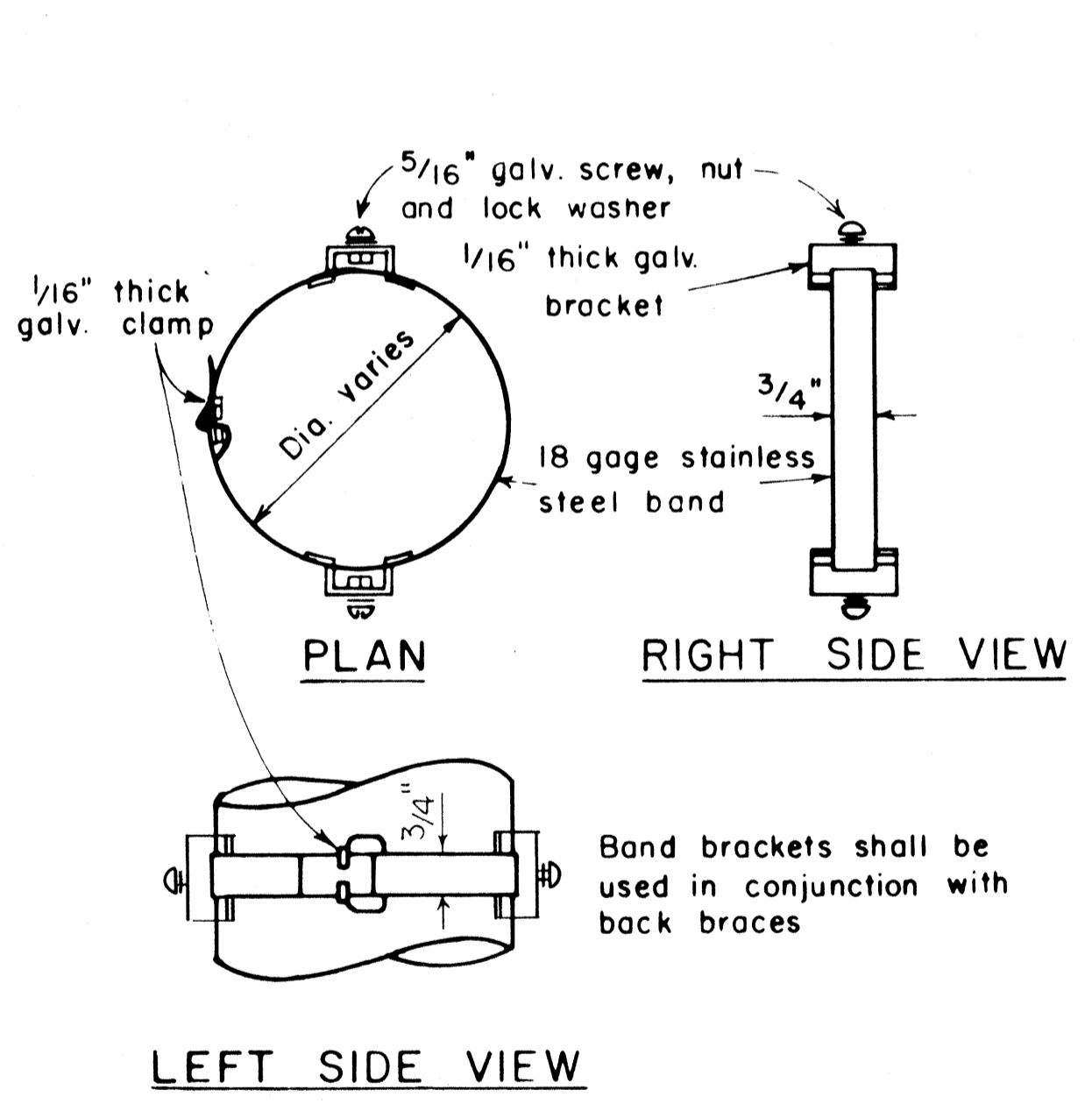
- Signs shall be placed in conformance with positions shown and described in the "Manual on Uniform Traffic Control Devices for Streets and Highways", 1978, Part II, Section 2A-21, as amended, and as supplemented herein.
- Signs 48" and wider or larger than 10 sq. ft. in area shall be mounted on two sign posts except as noted below.
- Signs 48" and wider or larger than 10 sq. ft. in area may be mounted on other than two sign posts (i.e. on highway lighting poles) as follows:
 - Signs larger than 10 sq. ft. and less than 28 sq. ft. in area shall be mounted with a minimum of two sets of band brackets and back braces.
 - Signs larger than 28 sq. ft. in area shall be mounted with a minimum of three sets of band brackets and back braces.
- All parking restriction signs with arrows shall be mounted 45° to the line of traffic flow.
- Sign posts shall extend 3/2" above each sign, where required, for attachment of City and County street name signs.
- (R) or (L) indicates right or left and shall be shown on the plans.
- * 7. See plans for special details of signs along bikeways.
- ** 8. The minimum lateral distances shown are guidelines and shall be exceeded whenever possible. The Contractor shall place signs at the maximum practical lateral distance from the edge of the traveled way up to 30 feet and shall utilize protected locations whenever possible. Final locations of all signs shall be approved by the Engineer.
- Signs in medians shall be placed at midpoint of median up to a maximum distance of 30 feet from the edge of traveled way. When appropriate, signs for opposing directions shall be placed back to back.
- Anchor bases shall be installed for all signpost installations, unless otherwise shown or directed. See sheets DT 100A and DT 100B.



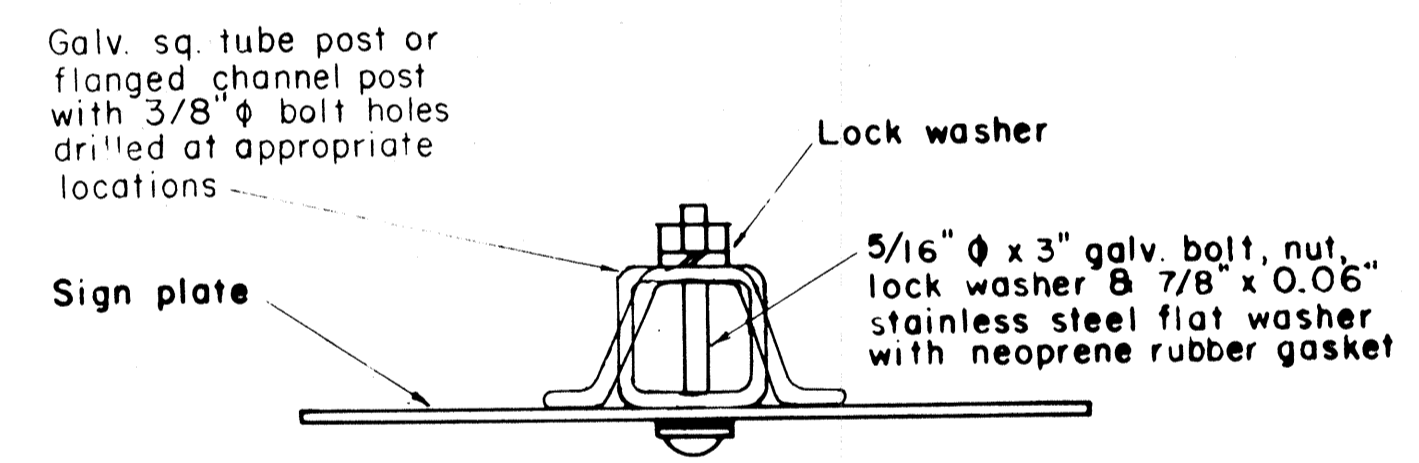
BACK BRACE DETAILS FOR BALANCED SIGN INSTALLATION



HEIGHT AND LATERAL LOCATION OF SIGNS TYPICAL INSTALLATION



BAND BRACKET TYPICAL MOUNTING DETAILS NOT TO SCALE



GALVANIZED SQUARE TUBE OR FLANGED CHANNEL POST

NO.	REVISION	APPROVED BY	DATE
1	Supersedes Sht. DT-100 approved 12/30/69	H.T.	11/15/77
2	Revised depth of signpost	H.T.	5/2/79
3	Added Notes No. 8 & No. 9	H.T.	5/18/79
4	Revised Gen. Note #4 & Mounting Details	H.T.	4/23/80
5	Revised General Notes, Lateral Sign Locations and Mounting Details	H.T.	5/15/81
6	Added Note 10. Minor revisions to notes and details.		

APPROVAL RECOMMENDED:
Eishi Tanaka 11/10/77
 TRAFFIC ENGINEER DATE

APPROVED:
Harold S. Sato 11/15/77
 ASSISTANT CHIEF, ENGINEERING DATE

STATE OF HAWAII
 DEPARTMENT OF TRANSPORTATION
 HIGHWAYS DIVISION

STANDARD DETAILS
 MISCELLANEOUS SIGN DETAILS

Not to scale June, 1977

SHEET No. 2 OF 11 SHEETS DT 100

DATE: _____
 SURVEY PLOTTED BY: _____
 DRAWN BY: _____
 DESIGNED BY: _____
 QUANTITIES BY: _____
 CHECKED BY: _____
 ORIGINAL PLAN No. _____
 NOTE BOOK No. _____

FED. ROAD DIST. NO.	STATE	FED. AID PROJ. NO.	FISCAL YEAR	SHEET NO.	TOTAL SHEETS
HAWAII	HAW.	SR-0750(6)	1983	19	27

A or A,	C	C,
36"	6"	-
48"	9"	19"
60"	12"	24"

NOTE: Frame stiffeners are required when D is greater than 24". See Gen. Note 4.

GENERAL NOTES

- Sign posts and base posts shall be flanged channel type structural steel conforming to ASTM A 499 and galvanized in accordance with ASTM A 123.
NOMINAL DIMENSIONS:
2.50 lbs./ft. - 3.125" x 1.562"
4.00 lbs./ft. - 3.500" x 1.750"
- Retainer - Spacer Strap shall be AISI 1020 steel and galvanized in accordance with ASTM A 123.
- Retainer and Connector Bolts shall be 5/16 - 18 UNC x 1.75" long hex. head, integral flange conforming to ASTM A 354 Grade BC. Nuts shall be 5/16 - 18 UNC hex. head, integral flange conforming to ASTM A 563 Grade D. All bolts and nuts shall be cadmium plated per Federal spec. QQP 416 B, Class 2, Type 2.
- All accessories, fittings and stiffener details (as required) shall be submitted to Engineer for approval 20 days prior to installation.
- For additional details see sht. DT 100.
- Basic formulas for use with the windload charts:
Factor = $A \times B \times H$
Therefore, if sign area (A x B) is known,
Maximum H = $\frac{\text{Factor}}{\text{sign area (A x B)}}$
and if H is known,
Maximum sign area (A x B) = $\frac{\text{Factor}}{H}$

APPROVAL RECOMMENDED:

Euchi Tanaka 9/21/82
TRAFFIC ENGINEER DATE

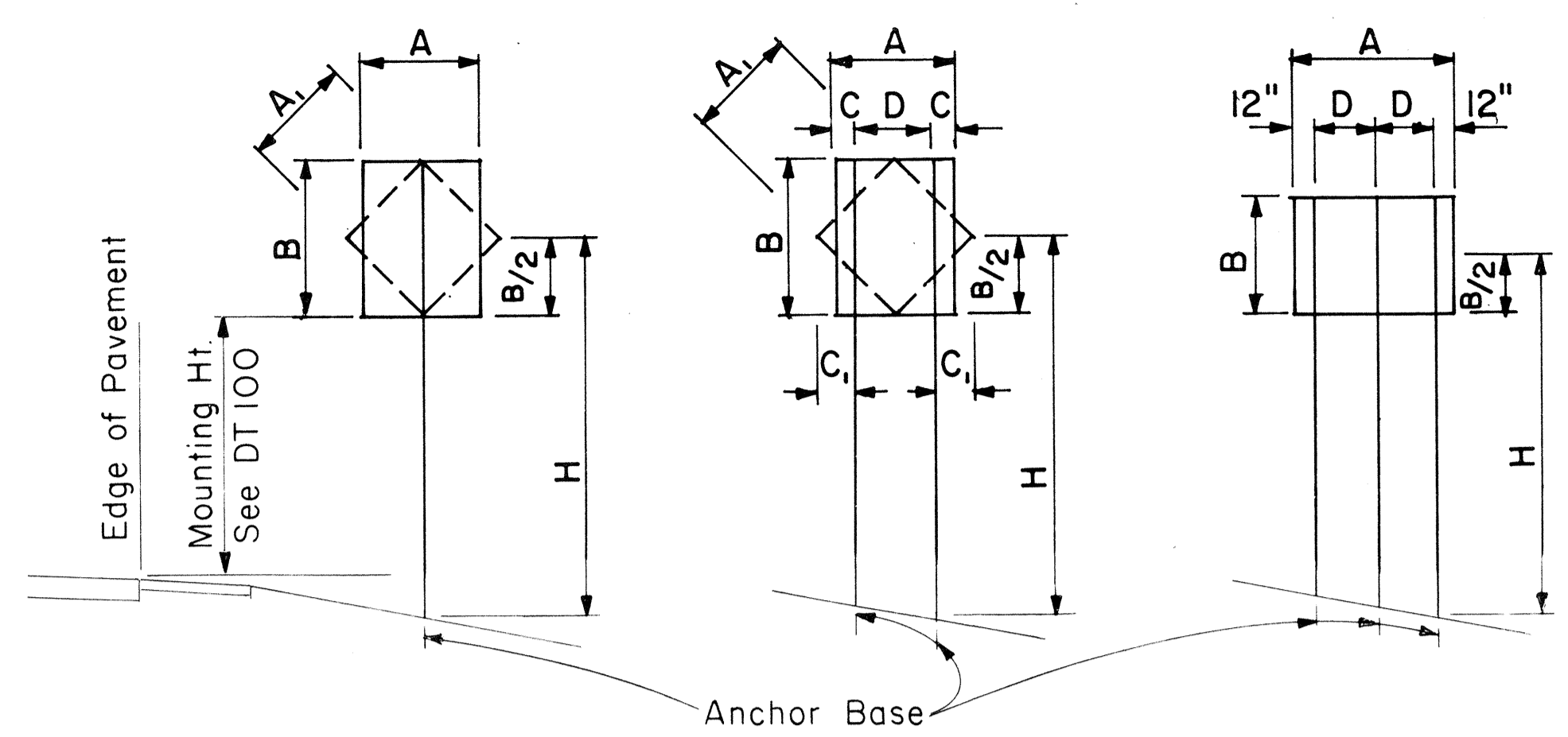
APPROVED:

ASSISTANT CHIEF, ENGINEERING DATE

STATE OF HAWAII
DEPARTMENT OF TRANSPORTATION
HIGHWAYS DIVISION

STANDARD DETAILS
GALVANIZED FLANGED CHANNEL
SIGN POST MOUNTING

Scale: As Shown Date: Sept. 1982
SHEET No. 3 OF 11 SHEETS DT 100A



1-POST Sign area 10 sq. ft. and less
2-POST Sign area greater than 10 sq. ft. or A=48"-60"
3-POST A = greater than 60"

TYPICAL INSTALLATION

Not to Scale

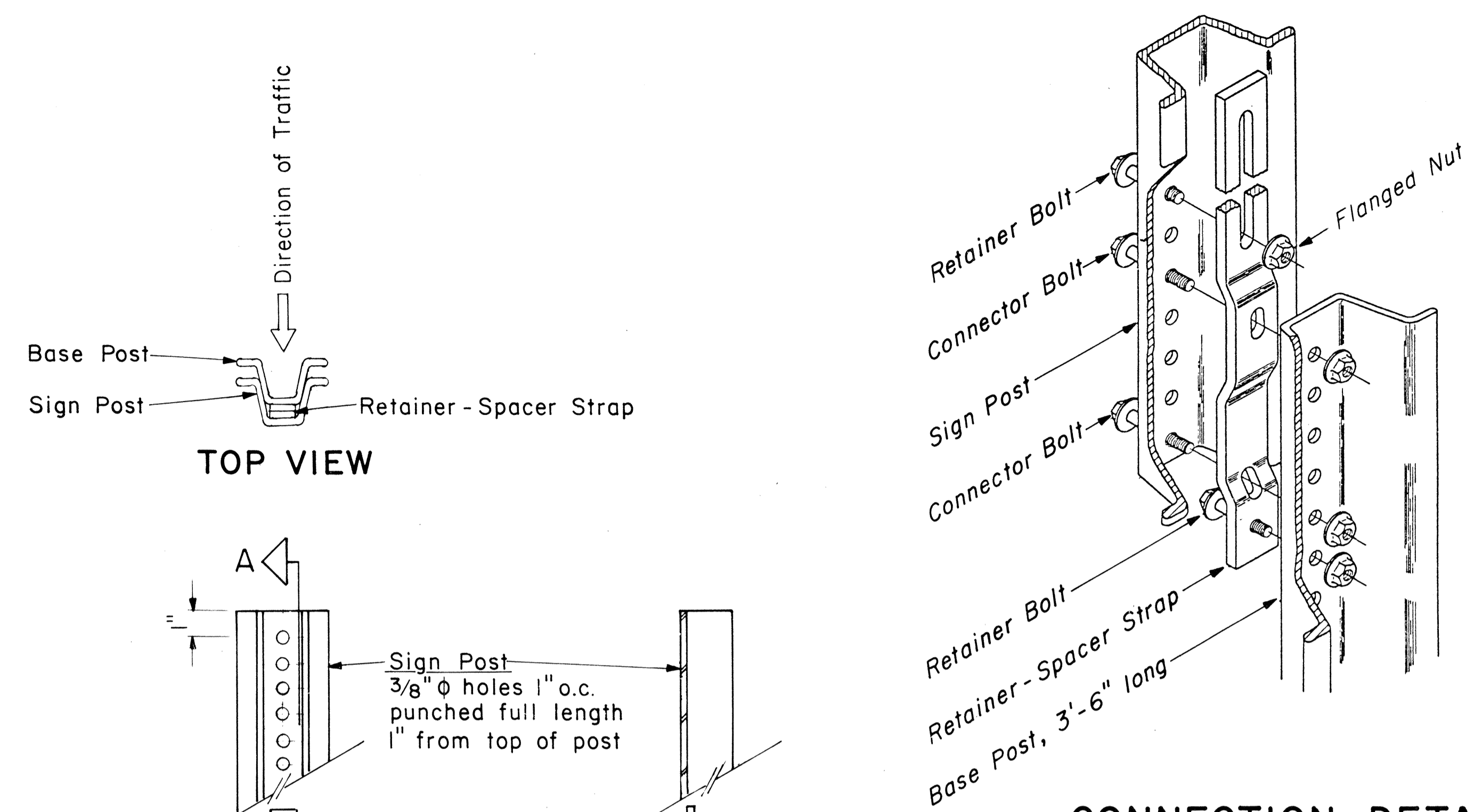
Post Size	A x B x H (Factor)	H = Ground Level to Midpoint (ft.)						A x B (Area, sq. ft.)
		7	8	9	10	11	12	
2.50 lbs./ft.	57	8.14	7.13	6.33	5.70	5.18	4.75	A x B (Area, sq. ft.)
4.00 lbs./ft.	112	-	-	-	-	-	9.33	

Post Size	A x B x H (Factor)	H = Ground Level to Midpoint (ft.)						A x B (Area, sq. ft.)
		7	8	9	10	11	12	
2.50 lbs./ft.	124	17.71	15.50	13.77	12.40	11.27	10.33	A x B (Area, sq. ft.)
4.00 lbs./ft.	241	34.43	30.13	26.78	24.10	21.91	20.08	

Post Size	A x B x H (Factor)	H = Ground Level to Midpoint (ft.)						A x B (Area, sq. ft.)
		7	8	9	10	11	12	
2.50 lbs./ft.	187	26.71	23.38	20.78	18.70	17.00	15.58	A x B (Area, sq. ft.)
4.00 lbs./ft.	362	51.71	45.25	40.22	36.20	32.91	30.17	

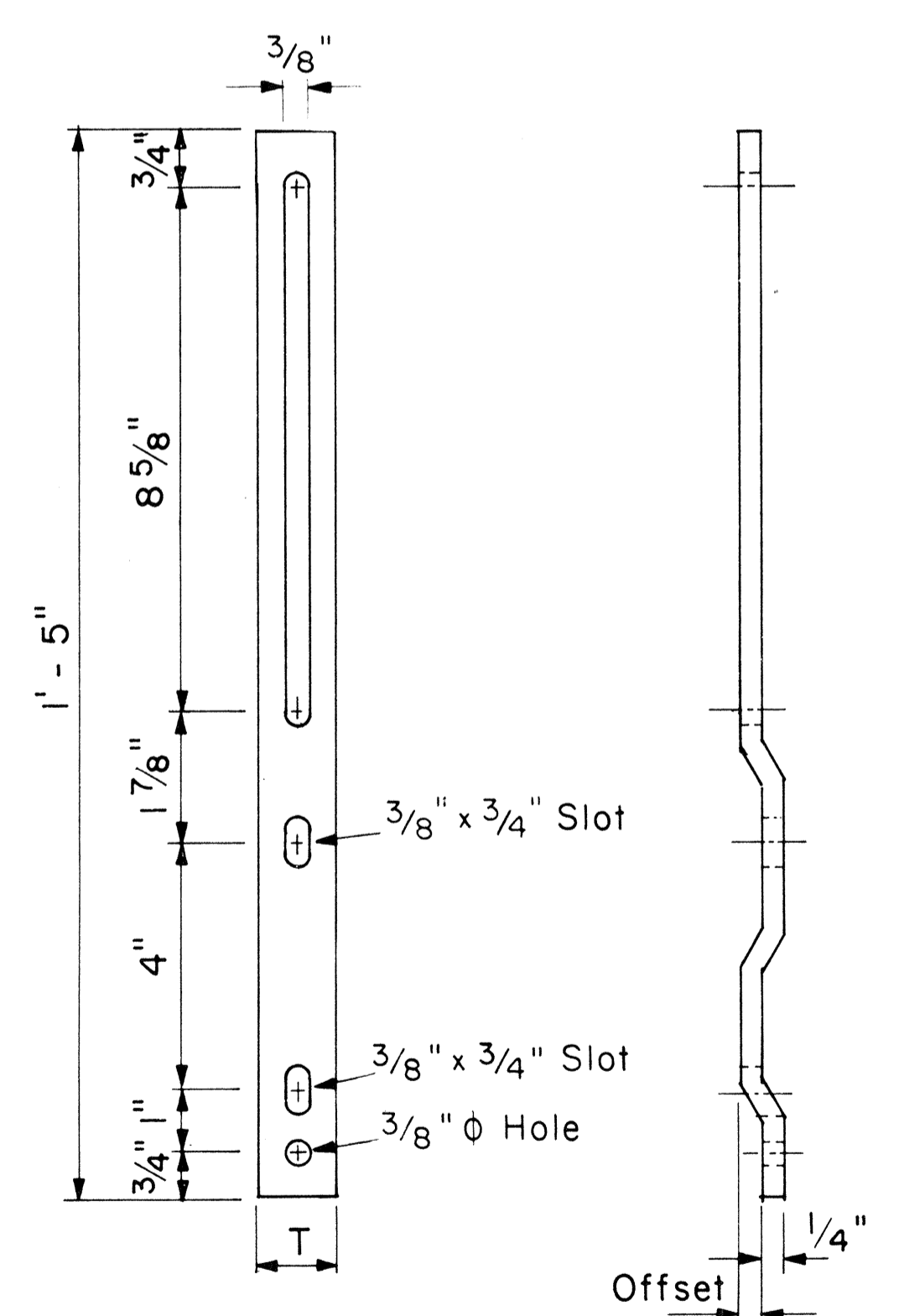
WINDLOAD CHARTS

NO.	REVISION	APPROVED BY	DATE



CONNECTION DETAIL

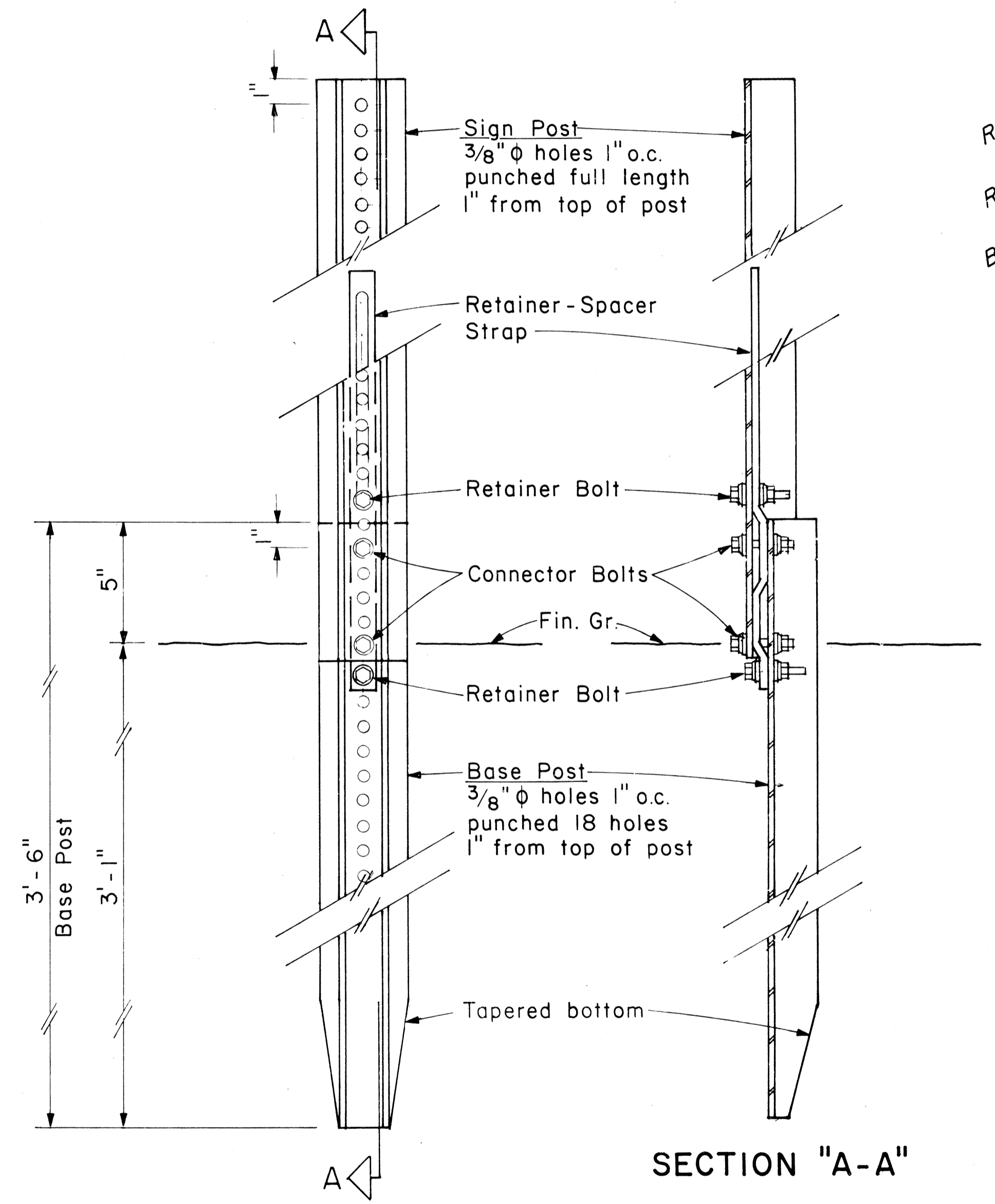
Not to Scale



RETAINER-SPACER STRAP

Not to Scale

Post Size	T	Offset
2.50 lbs./ft.	1.00"	0.145"
4.00 lbs./ft.	1.12"	0.280"

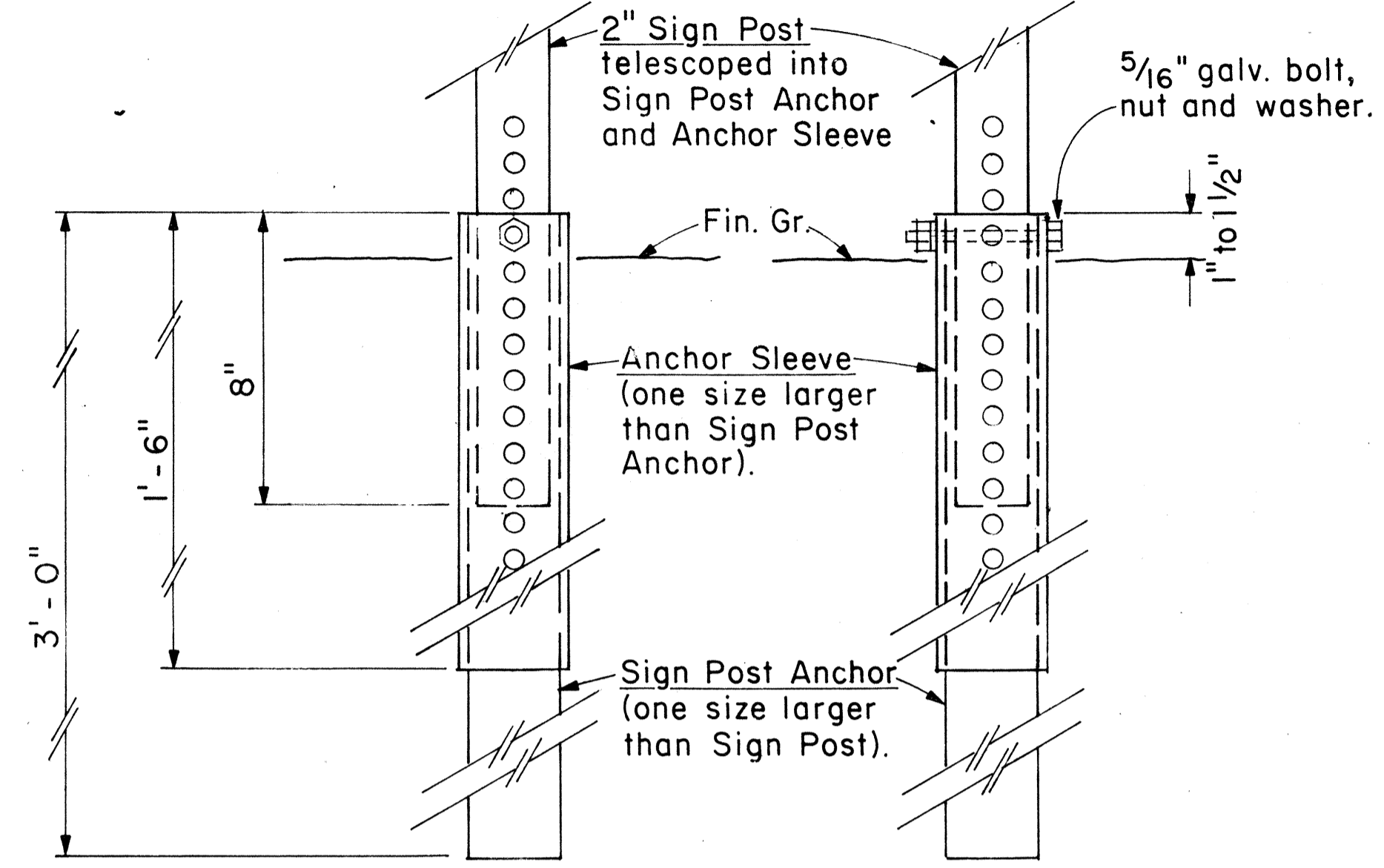
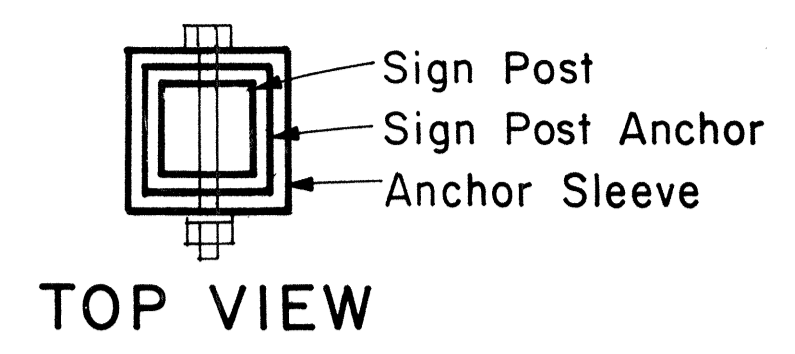


BACK VIEW

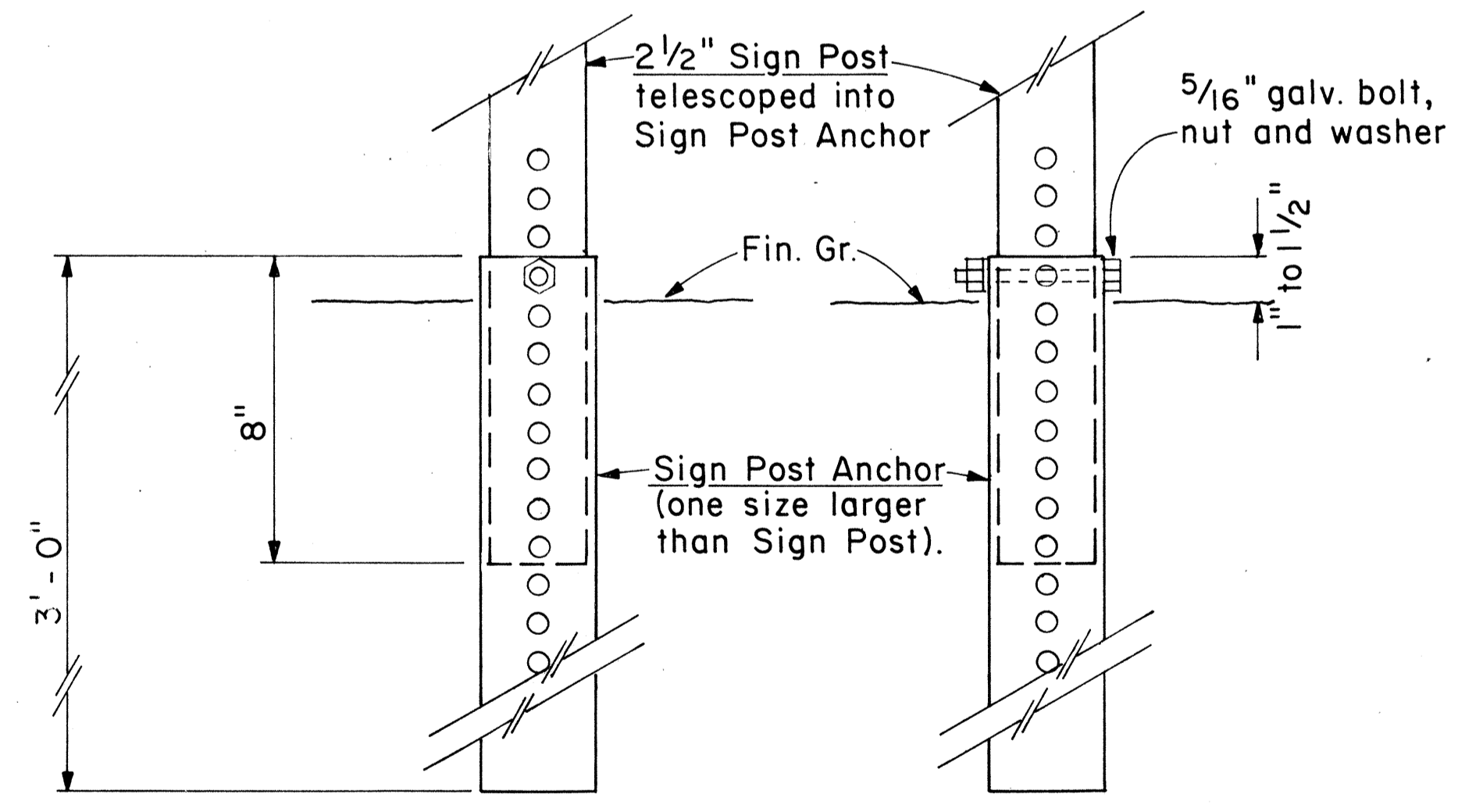
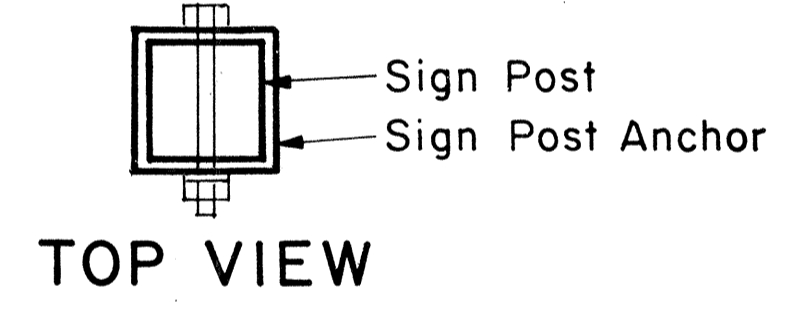
ANCHOR BASE DETAIL

Scale: 3" = 1'-0"

DATE: _____
 SURVEY PLOTTED BY: _____
 DRAWN BY: _____
 TRACED BY: _____
 DESIGNED BY: _____
 CHECKED BY: _____
 ORIGINAL PLAN No. _____

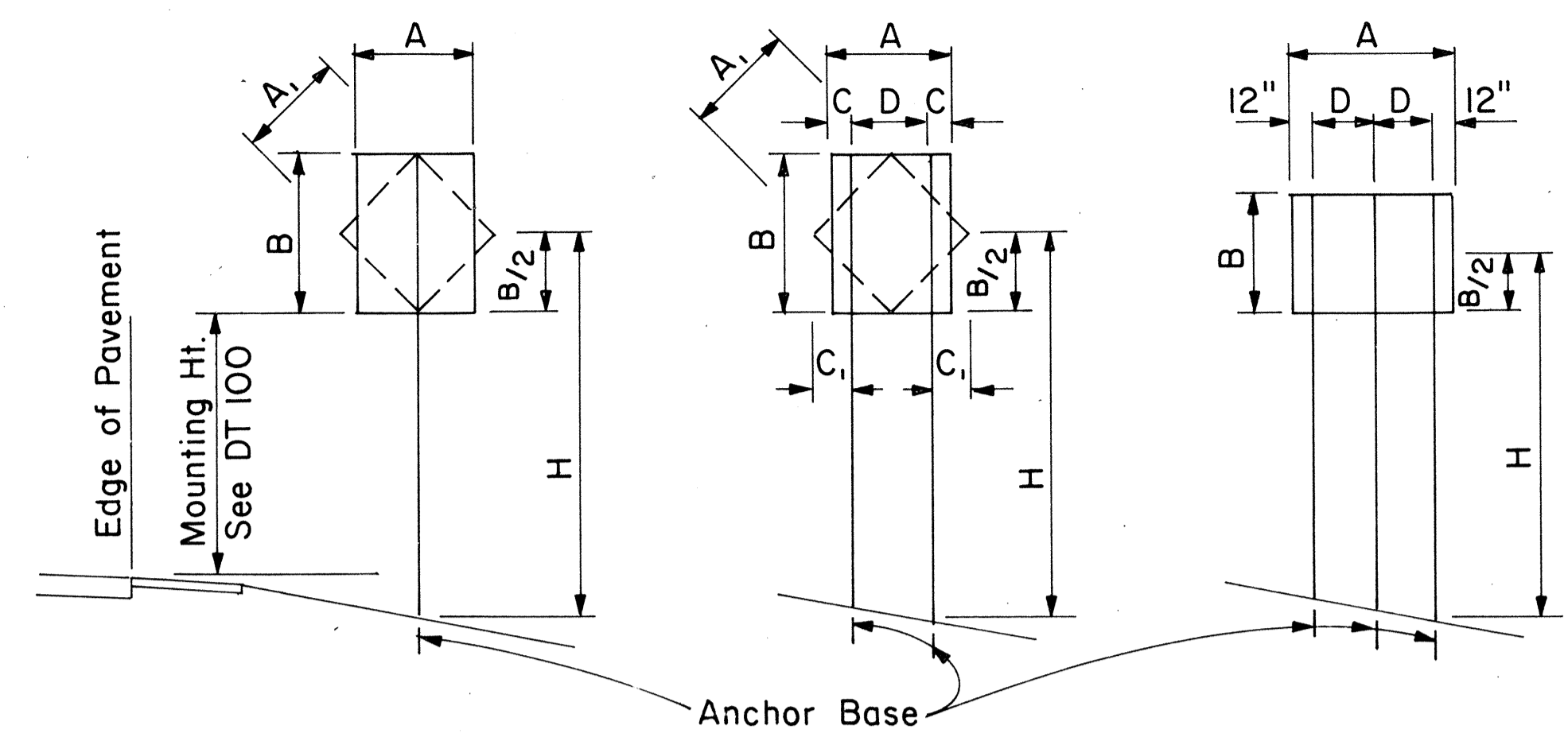


BACK VIEW SIDE VIEW
2" SIGN POST INSTALLATION



BACK VIEW SIDE VIEW
2 1/2" SIGN POST INSTALLATION
ANCHOR BASE DETAIL

Scale: 3" = 1'-0"



1-POST Sign area 10 sq. ft. and less
2-POST Sign area greater than 10 sq. ft. or A=48"-60"
3-POST A= greater than 60"

TYPICAL INSTALLATION
Not to Scale

A or A ₁	C	C ₁
36"	6"	-
48"	9"	19"
60"	12"	24"

NOTE: Frame stiffeners are required when D is greater than 24". See Gen. Note 2.

SQUARE TUBE: 1-POST INSTALLATION

Post Size	A x B x H (Factor)	H = Ground Level to Midpoint (ft.)					
		7	8	9	10	11	12
2"	62	8.8	7.7	6.8	6.1	5.6	4.8
2 1/2"	107	-	-	-	-	9.6	8.8

A x B (Area, sq. ft.)

SQUARE TUBE: 2-POST INSTALLATION

Post Size	A x B x H (Factor)	H = Ground Level to Midpoint (ft.)					
		7	8	9	10	11	12
2"	122	17.4	15.2	13.5	12.2	11.0	10.1
2 1/2"	212	30.2	26.5	23.5	21.1	19.2	17.6
2 1/2", 10 ga.	260	37.0	32.0	28.6	26.0	23.5	21.5

A x B (Area, sq. ft.)

SQUARE TUBE: 3-POST INSTALLATION

Post Size	A x B x H (Factor)	H = Ground Level to Midpoint (ft.)					
		7	8	9	10	11	12
2"	183	26.0	22.8	20.3	18.2	16.6	15.2
2 1/2"	318	45.4	39.5	35.2	31.5	28.8	26.5
2 1/2", 10 ga.	388	55.0	48.5	43.0	38.5	35.0	32.0

A x B (Area, sq. ft.)

WINDLOAD CHARTS

NO.	REVISION	APPROVED BY	DATE

GENERAL NOTES

- Square tube sign posts shall conform to Subsection 713.11(C) Square Tube Posts of the Specifications.
- All accessories, fittings and stiffener details (as required) shall be submitted to Engineer for approval 20 days prior to installation.
- Square tube posts shall be perforated with 7/16" φ holes, 1" o.c., 4 sides, along entire length of post.
- All posts shall be 12 gage unless otherwise specified or shown on the plans.
- For additional details see sht. DT 100.
- Basic formulas for use with the windload charts:
Factor = A x B x H
Therefore, if sign area (A x B) is known,
Maximum H = $\frac{\text{Factor}}{\text{sign area (A x B)}}$
and if H is known,
Maximum sign area (A x B) = $\frac{\text{Factor}}{H}$

APPROVAL RECOMMENDED:
Eishi Tanaka 9/21/82
TRAFFIC ENGINEER DATE

APPROVED:
Harbert S. Sato 9/22/82
ASSISTANT CHIEF, ENGINEERING DATE

STATE OF HAWAII
DEPARTMENT OF TRANSPORTATION
HIGHWAYS DIVISION

STANDARD DETAILS
GALVANIZED SQUARE TUBE
SIGN POST MOUNTING

Scale: As Shown Date: Sept. 1982
SHEET NO. 4 OF 11 SHEETS DT100B

SURVEY PLOTTED BY: _____ DATE: _____
 DRAWN BY: _____
 TRACED BY: _____
 DESIGNED BY: _____
 CHECKED BY: _____
 ORIGINAL PLAN No. _____

FED. ROAD DIST. NO.	STATE	FED. AID PROJ. NO.	FISCAL YEAR	SHEET NO.	TOTAL SHEETS
HAWAII	HAW.	5R-0750(6)	1983	21	27

GENERAL NOTES

1. Sign details shall conform to the FHWA publications "Manual on Uniform Traffic Control Devices for Streets and Highways," 1971, and "Standard Highway Signs," 1972, and as amended.
2. All regulatory signs shall be reflectorized unless otherwise specified.
3. All regulatory signs shall have 3/8" bolt holes drilled at appropriate locations.
4. Numerals in () indicates numerals to be inserted for sign message. (R) or (L) indicates right or left.
5. All signs shall be erected without educational plaques unless called for in the plans.

APPROVAL RECOMMENDED:
Eishi Tanaka 3/17/72
 TRAFFIC ENGINEER DATE

APPROVED:
Robert Robert 3-20-72
 ASSISTANT CHIEF, ENGINEERING DATE

NO.	REVISION	APPROVED BY	DATE
1	Supersedes Sht. DT 101 Approved 12-30-69	H.T.	3/20/72
2	Revised General Note 1.	H.T.	10/14/74
3	Added General Note 5	H.T.	8/9/75

STATE OF HAWAII
 DEPARTMENT OF TRANSPORTATION
 HIGHWAYS DIVISION

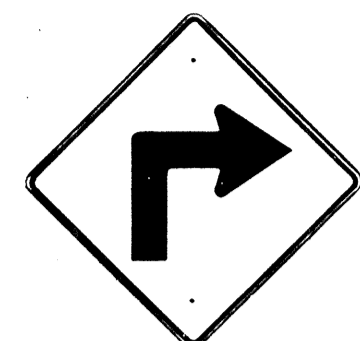
STANDARD DETAILS
REGULATORY SIGNS

NOT TO SCALE

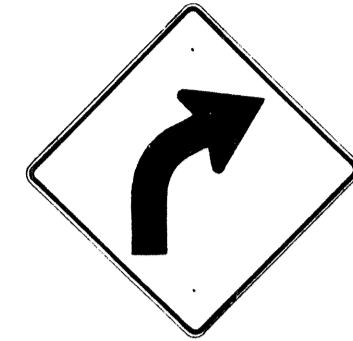
SHEET No. 5 OF 11 SHEETS DT 101

DATE: _____
 SURVEY PLOTTED BY: _____
 DRAWN BY: _____
 CHECKED BY: _____
 ORIGINAL PLAN NO. _____
 NOTE BOOK NO. _____

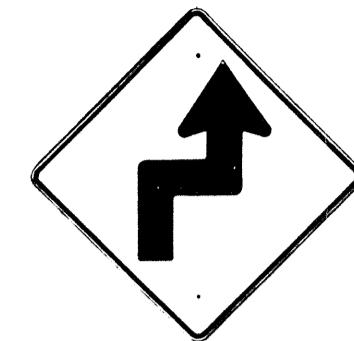
FED. ROAD DIST. NO.	STATE	FED. AID PROJ. NO.	FISCAL YEAR	SHEET NO.	TOTAL SHEETS
HAWAII*	HAW.	SR-0750(6)	1983	22	27



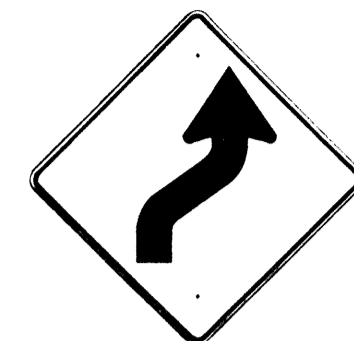
W1-1(R) 30"x 30"
W1-1(R)-A 48"x 48"



W1-2(R) 30"x 30"
W1-2(R)-A 48"x 48"



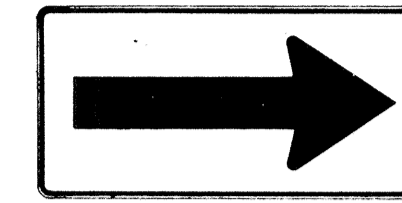
W1-3(R) 30"x 30"
W1-3(R)-A 48"x 48"



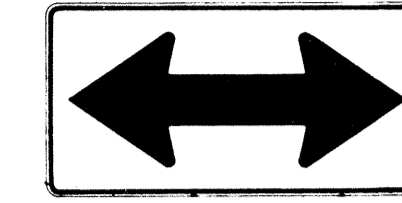
W1-4(R) 30"x 30"
W1-4(R)-A 48"x 48"



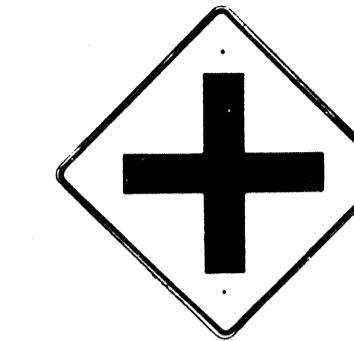
W1-5(R) 30"x 30"
W1-5(R)-A 48"x 48"



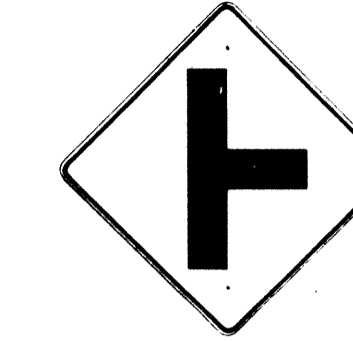
W1-6 48"x 24"



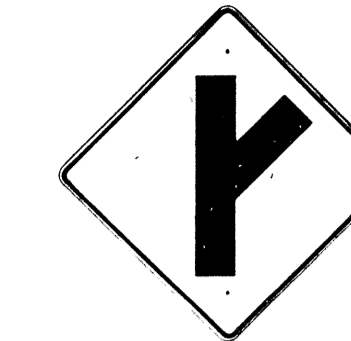
W1-7 48"x 24"



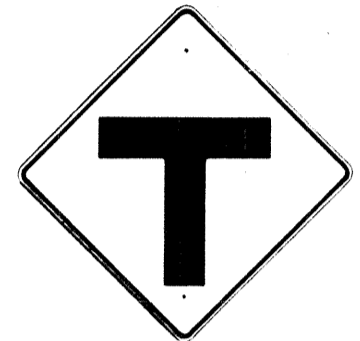
W2-1 30"x 30"
W2-1-A 48"x 48"



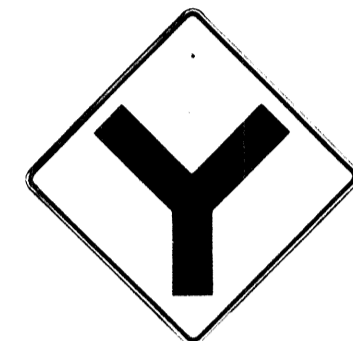
W2-2 30"x 30"
W2-2-A 48"x 48"



W2-3(R) 30"x 30"
W2-3(R)-A 48"x 48"



W2-4 30"x 30"
W2-4-A 48"x 48"



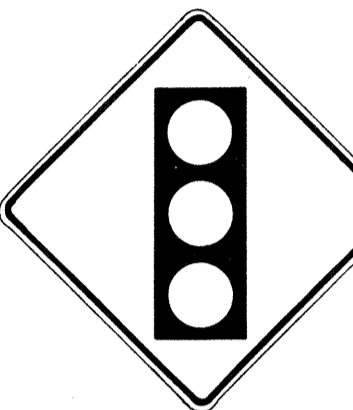
W2-5 30"x 30"
W2-5-A 48"x 48"



W3-1 30"x 30"
W3-1-A 36"x 36"



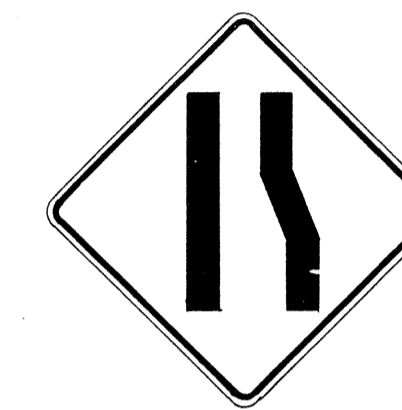
W3-2 30"x 30"
W3-2-A 36"x 36"



W3-3 36"x 36"
24"x 18"



W4-1(R) 30"x 30"
24"x 18"
W4-1(R)-A 48"x 48"
24"x 18"



W4-2(R) 36"x 36"
W4-2(R)-A 48"x 48"



W5-1 36"x 36"



W5-2 30"x 30"
W5-2-A 36"x 36"



W5-3 36"x 36"



W6-1 36"x 36"
24"x 18"



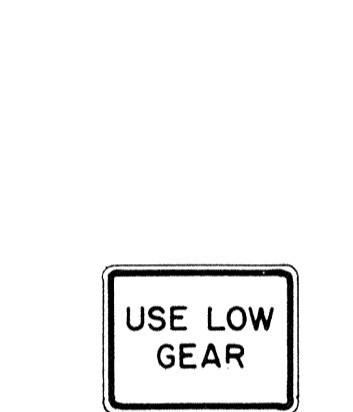
W6-2 36"x 36"
24"x 18"



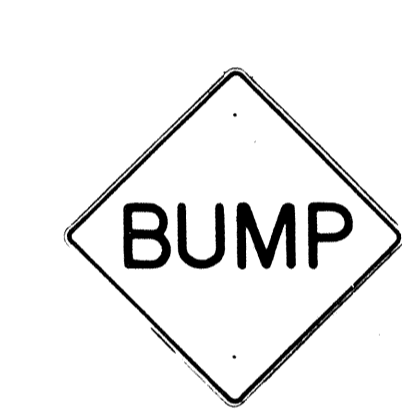
W6-3 30"x 30"
24"x 18"
W6-3-A 36"x 36"
24"x 18"
W6-3-B 48"x 48"
24"x 18"



W7-1 30"x 30"
24"x 18"
W7-1-A 36"x 36"
24"x 18"



W7-2 24"x 18"



W8-1 30"x 30"
W8-1-A 36"x 36"



W8-2 30"x 30"
W8-2-A 36"x 36"



W8-3 30"x 30"
W8-3-A 36"x 36"



W8-4 30"x 30"
W8-4-A 36"x 36"



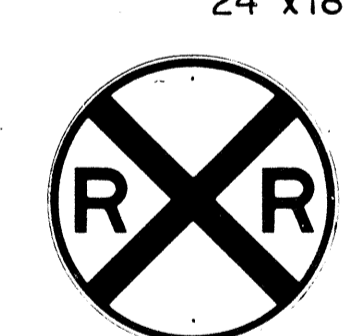
W8-5 30"x 30"
24"x 18"
W8-5-A 36"x 36"
24"x 18"



W9-1(R) 30"x 30"
W9-1(R)-A 36"x 36"
W9-1(R)-B 48"x 48"



W9-2(L) 36"x 36"
W9-2(L)-A 48"x 48"



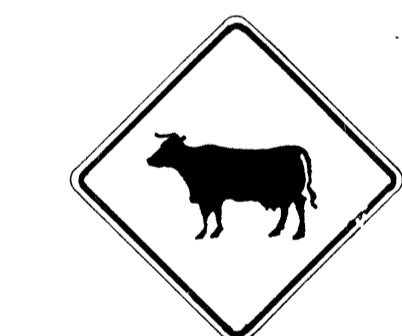
W10-1 36" Diameter



W11-1 30"x 30"
24"x 18"
W11-1-A 36"x 36"
24"x 18"



W11-2 30"x 30"
24"x 18"
W11-2-A 36"x 36"
24"x 18"



W11-4 30"x 30"
24"x 18"
W11-4-A 36"x 36"
24"x 18"



W11-5 30"x 30"
24"x 18"
W11-5-A 36"x 36"
24"x 18"



W12-1 24"x 24"
W12-1-A 36"x 36"
W12-1-B 48"x 48"



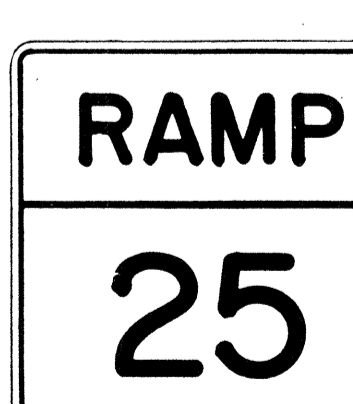
W12-2(12'-6") 36"x 36"
24"x 18"



W13-1(25) 18"x 18"
W13-1(25)-A 24"x 24"



W13-2(25) 48"x 60"



W13-3(25) 48"x 60"



W14-1 30"x 30"



W14-3 36"x 48" x 48"

GENERAL NOTES

1. Sign details shall conform to the FHWA publications "Manual on Uniform Traffic Control Devices for Streets and Highways," 1971, and "Standard Highway Signs," 1972, and as amended.
2. All warning signs shall be reflectorized unless otherwise specified.
3. All warning signs shall have 3/8" bolt holes drilled at appropriate locations.
4. Numerals in () indicates numerals to be inserted for sign message. (R) or (L) indicates right or left.
5. Signs prefixed with "CW" on the plans shall indicate orange and black construction signs, and shall be reflectorized.

APPROVAL RECOMMENDED:
Erich Tanaka 3/17/72
TRAFFIC ENGINEER DATE

APPROVED:
John P. Salsin 3-20-72
ASSISTANT CHIEF, ENGINEERING DATE

NO.	REVISION	APPROVED BY	DATE
1	Supersedes Sht. DT 102 Approved 12-30-69	H.C.	3/20/72
2	Revised General Note 1	H.C.	10/16/72
3	Revised General Note 5	Mt.	9-16-75
4	Revised General Note 5	H.C.	9-14-76
5	Added Note 1	H.C.	11-7-77

STATE OF HAWAII
DEPARTMENT OF TRANSPORTATION
HIGHWAYS DIVISION

STANDARD DETAILS
WARNING SIGNS

NOT TO SCALE

SHEET No. 6 OF 11 SHEETS DT 102

DESIGNED BY: _____
CHECKED BY: _____
DATE: _____

FED. ROAD DIST. NO.	STATE	FED. AID PROJ. NO.	FISCAL YEAR	SHEET NO.	TOTAL SHEETS
HAWAII	HAW.	5R0750(6)	1983	23	27

General Notes

- Sign details shall conform to the latest editions of the following FHWA publications:
 - "Standard Alphabets for Highway Signs," and as amended.
 - "Standard Highway Signs," and as amended.
 - "Manual on Uniform Traffic Control Devices for Streets and Highways," and as amended.
- All signs shall be reflectorized with reflective sheeting, unless otherwise specified.
- All signs shall have 3/8" bolt holes drilled at appropriate locations.
- Numerals in () indicate numerals to be inserted for sign message. (R) or (L) indicates right or left.
- Signs prefixed with "CW" on the plans shall indicate orange and black construction signs, and shall be reflectorized with reflective sheeting.
- All signs shall be erected without educational plaques unless called for in the plans.

ALL WAY
R1-4 18" x 6"

REDUCED SPEED
35
AHEAD
R2-5d(35) 24" x 30"
R2-5d(35)-A 48" x 60"

SPEED LIMIT ENFORCED BY VASCAR
4" Series D
- 4" Series C
- 3" Series D
- 5" Series C
R2-10 24" x 30"

CENTER LANE ONLY
R3-9b 24" x 36"

BUS STOP
R7-107(R) 12" x 24"

RESERVED PARKING
R7-8 12" x 18"
R7-8-A 24" x 30"

ANY TIME
R8-3a 24" x 24"
24" x 18"
R8-3a-A 48" x 48"

NO PED XING
R9-3a 18" x 18"
18" x 12"
R9-3a-A 24" x 24"
24" x 18"

USE CROSSWALK
R9-3b(R) 18" x 12"

USE CROSSWALK
R9-3b(L) 18" x 12"

NO TURN ON RED
R10-11a 24" x 30"

TURN RIGHT ANY TIME WITH CAUTION
4" Series C
R16-1 24" x 30"

NO LEFT TURN ON RED
- 4" Series D
- 3" Series D
- 2" Series D
- 3" Series D
R16-3 18" x 24"

NO RIGHT TURN ON RED
R16-4 18" x 24"

UNLICENSED VEHICLES BICYCLES, CYCLES UNDER 5 H.P., PEDESTRIANS KEEP OUT FREEWAY
3" Series C
4" Series E
R16-5 36" x 42"

TURN AHEAD
- 8" Series F
- 5" Series D
R16-6 24" x 30"

TURN OK
- 8" Series F
- 5" Series D
R16-7 24" x 30"

MOTOR-DRIVEN CYCLES PROHIBITED
4" Series B
R5-8 30" x 24"

W17-1(L) 60" x 60"

STOP AHEAD
W3-1a 36" x 36"
24" x 18"
W3-1a-A 48" x 48"
24" x 18"

YIELD AHEAD
W3-2a 36" x 36"
24" x 18"
W3-2a-A 48" x 48"
24" x 18"

STOP AHEAD WHEN FLASHING
6" Series C
W3-4 48" x 48"

TRUCK CROSSING
W8-6 30" x 30"
W8-6-A 36" x 36"

THRU TRAFFIC MERGE LEFT
6" Series E
W9-3(L) 48" x 48"

EQUESTRIAN XING
W11-7 36" x 36"
24" x 18"
W11-7-A 48" x 48"
24" x 18"

FIRE STATION
W11-8 36" x 36"
24" x 18"
W11-8-A 48" x 48"
24" x 18"

W11-9 36" x 36"
W11-9-A 48" x 48"

LIMITED SIGHT DISTANCE
W14-4 36" x 36"
W14-4-A 48" x 48"

DELAYED GREEN
- 4" Series C
W15-1 24" x 24"

ADVANCE GREEN
W15-2 24" x 24"

END FREEWAY 1/2 MI
8" Series E
CW16-1(1/2) 60" x 60"

RIGHT LANE EXIT ONLY
8" Series E
W18-1 48" x 60"

S1-1 36" x 36"

S2-1 36" x 36"

SCHOOL BUS STOP AHEAD
S3-1 30" x 30"

8:00 AM TO 3:30 PM
S4-1 24" x 10"

SCHOOL
S4-3 24" x 8"

SIDEWALK CLOSED
7" Series D
CW23-4 48" x 48"

USE SIDEWALK
4" Series C
R18-1 24" x 18"

NO.	REVISION	APPROVED BY	DATE
1	Supersedes Sht DT103 approved 3/20/72	H.F.	5/2/78
2	Added General Note 6	H.F.	11/3/78

APPROVAL RECOMMENDED:
Eushi Tanaka 5/2/78
TRAFFIC ENGINEER DATE

APPROVED:
Andrew S. Dateish 5/2/78
ASSISTANT CHIEF, ENGINEERING DATE

STATE OF HAWAII
DEPARTMENT OF TRANSPORTATION
HIGHWAYS DIVISION

STANDARD DETAILS

MISCELLANEOUS SIGNS

NOT TO SCALE DATE: MAY, 1978
SHEET No. 7 OF 11 SHEETS DT 103

DATE: _____
SURVEY PLOTTED BY: _____
DRAWN BY: _____
TRACED BY: _____
DESIGNED BY: _____
QUANTITIES BY: _____
CHECKED BY: _____
ORIGINAL PLAN No. _____
NOTE BOOK No. _____

FED. ROAD DIST. NO.	STATE	FED. AID PROJ. NO.	FISCAL YEAR	SHEET NO.	TOTAL SHEETS
HAWAII	HAW.	SR0750(6)	1983	24	27



CW20-1a 48" x 48"



CW20-2d 48" x 48"



CW20-3b 48" x 48"



CW20-4d 48" x 48"



CW20-5d(L) 48" x 48"



CW20-7c 48" x 48"



CW21-1 30" x 30"



CW21-2 30" x 30"



CW21-3 36" x 36"



CW21-4 36" x 36"



CW21-5 30" x 30"



CW21-6 30" x 30"



CW22-1b 48" x 48"



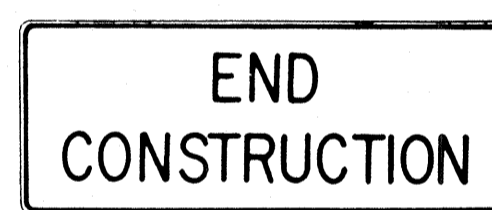
CW22-2 42" x 36"



CW22-3 42" x 36"



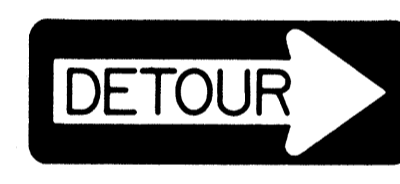
CG20-1(5) 60" x 36"



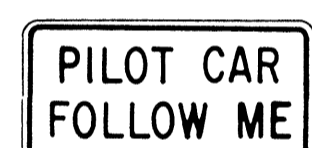
CG20-2 60" x 24"



CM4-9(R) 30" x 24"



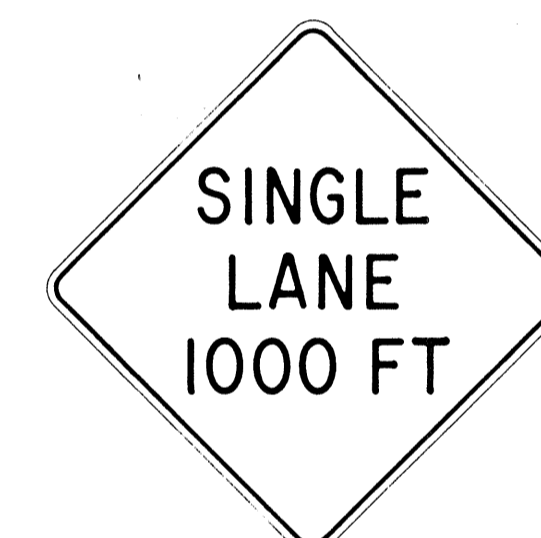
CM4-10(R) 48" x 18"



CG20-4 36" x 18"



CW23-1 36" x 36"



CW23-2b 48" x 48"



CW23-3(R) 48" x 48"

GENERAL NOTES

- Sign details shall conform to the FHWA publications "Manual on Uniform Traffic Control Devices for Streets and Highways," 1971, and "Standard Highway Signs," 1972, and as amended.
- All construction signs shall be reflectorized.
- All construction signs shall have 3/8" bolt holes drilled at appropriate locations.
- Numerals in () indicates numerals to be inserted for sign message. (R) or (L) indicates right or left.
- For "CW" series signs, suffixes a,b,c and d are as follows:
a-1500 FT, b-1000 FT, c-500 FT and d-AHEAD.

APPROVAL RECOMMENDED:
Eiichi Tanaka 3/21/72
 TRAFFIC ENGINEER DATE

APPROVED:
Hubert ... 2/23/72
 ASSISTANT CHIEF, ENGINEERING DATE

NO.	REVISION	APPROVED BY	DATE
1	Supersedes Sht. DT 104 Approved 12-30-69	HT	2/23/72
2	Revised General Note 1	HT	10/16/74
3	Revised General Note 2	HT	2-1-75
4	Revised General Note 2 and sign CG20-1(5)	HT	7-14-76

STATE OF HAWAII
 DEPARTMENT OF TRANSPORTATION
 HIGHWAYS DIVISION

STANDARD DETAILS
CONSTRUCTION SIGNS

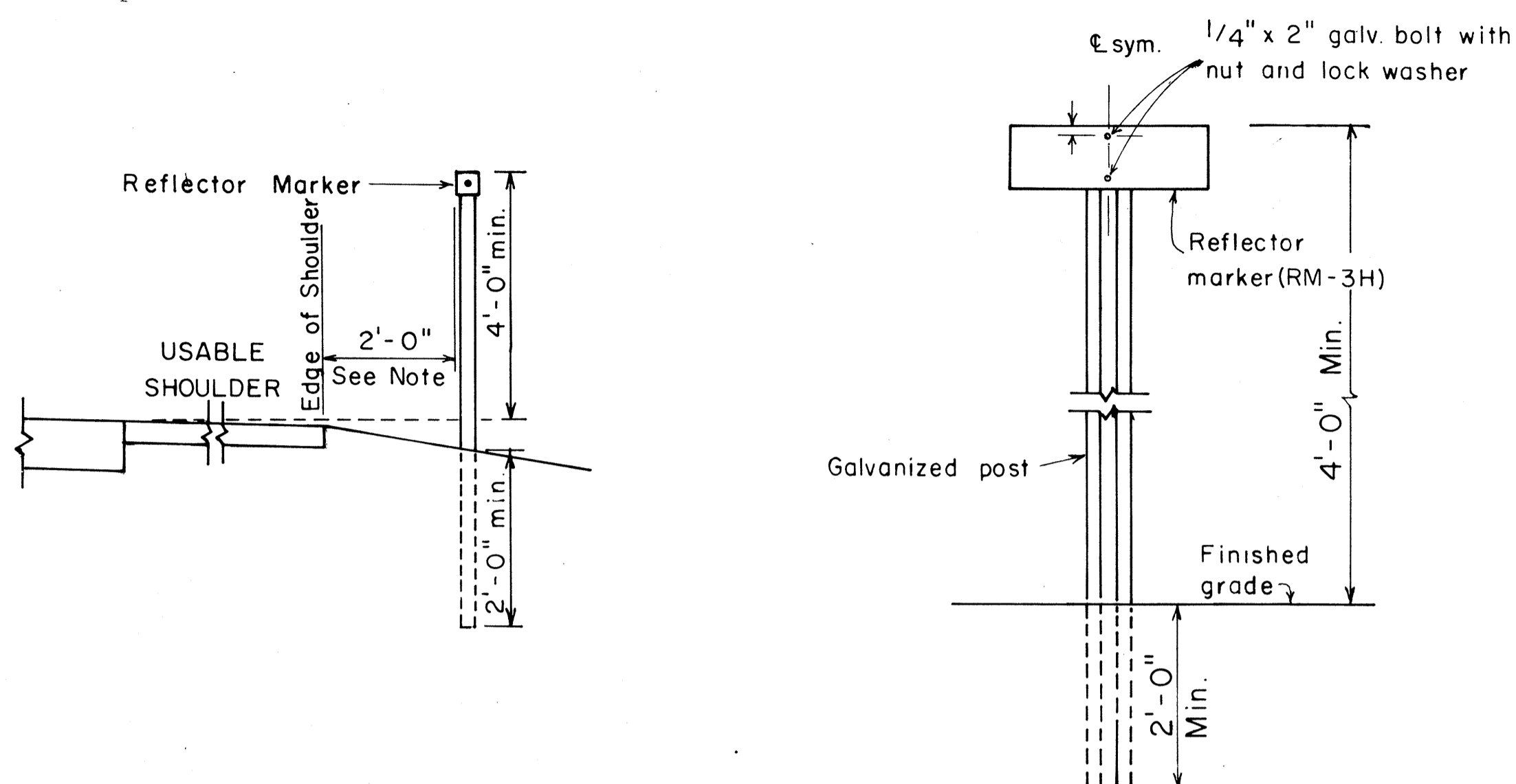
NOT TO SCALE

ORIGINAL	SURVEY PLOTTED BY	DATE
PLAN	FR-MN BY	
NOTE BOOK	QUANTITIES BY	
No.	CHECKED BY	

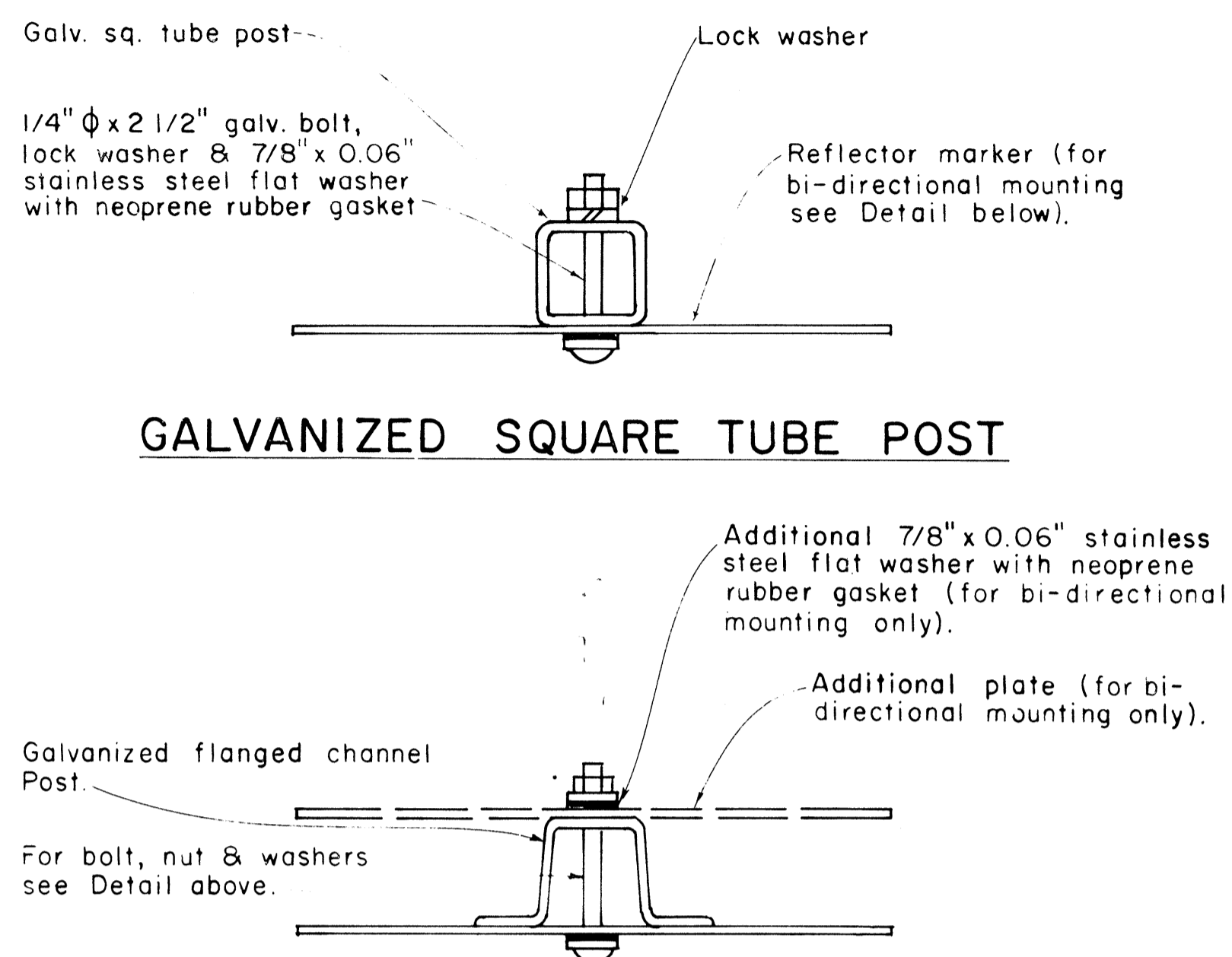
FED. ROAD DIST. NO.	STATE	FED. AID PROJ. NO.	FISCAL YEAR	SHEET NO.	TOTAL SHEETS
HAWAII	HAW.	SR0750(6)	1983	25	27

GENERAL NOTES:

1. Clearance markers (RM-3, RM-4) shall be installed with the edge of the marker in line with the inner edge of the obstruction.
2. (R) or (L) indicates right or left and shall be as shown on the plans.
3. Reflector markers RM-1 and RM-2 shall be:
 - a) Yellow if placed along the left edge of divided roadways, one-way roadways, and ramps in the direction of travel.
 - b) White if placed along the right edge of divided roadways, one-way roadways, and ramps in the direction of travel.
4. For reflector marker RM-9, reflective sheeting material may be used as an alternate.
5. For RM-4, the stripes shall slope downward at an angle of 45° in the direction of traffic.

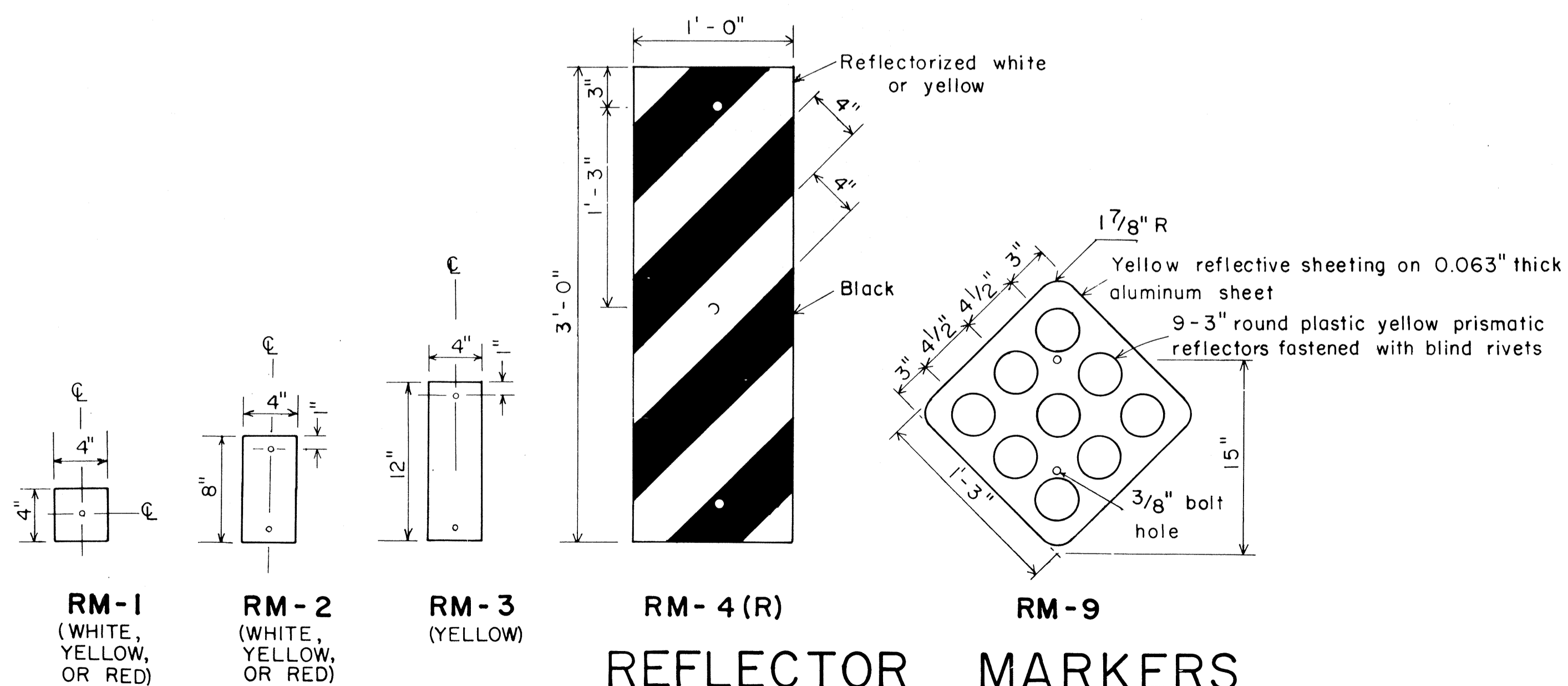


REFLECTOR MARKER MOUNTING DETAIL



GALVANIZED FLANGED CHANNEL POST

TYPICAL MOUNTING DETAILS



REFLECTOR MARKERS

APPROVAL RECOMMENDED:
Erich Tanaka 11/7/77
 TRAFFIC ENGINEER DATE

APPROVED:
Herbert S. Sakuma 11/7/77
 ASSISTANT CHIEF, ENGINEERING DATE

NO.	REVISION	APPROVED BY	DATE
1	Revised Mounting Details	H-1	4/23/80

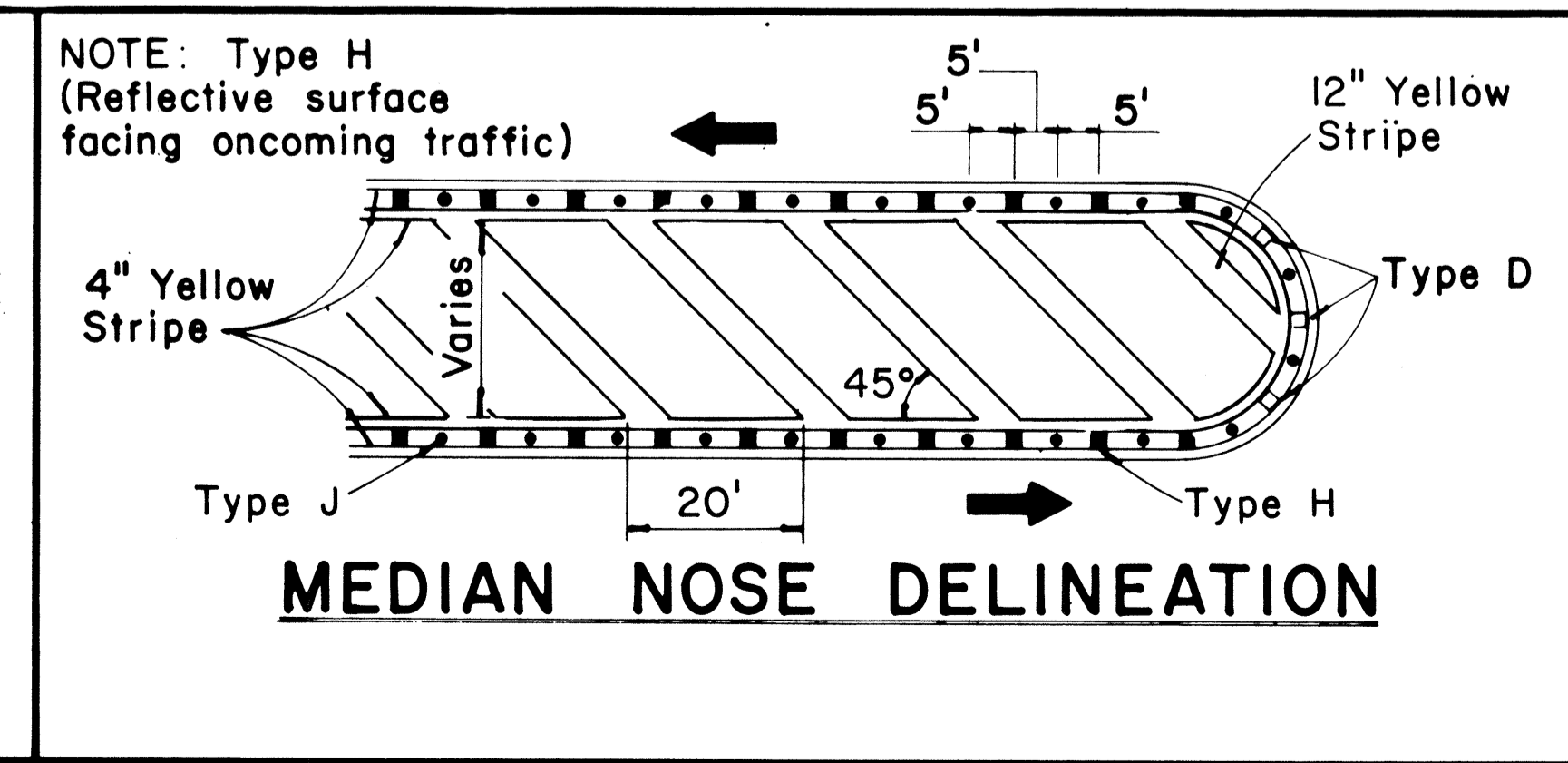
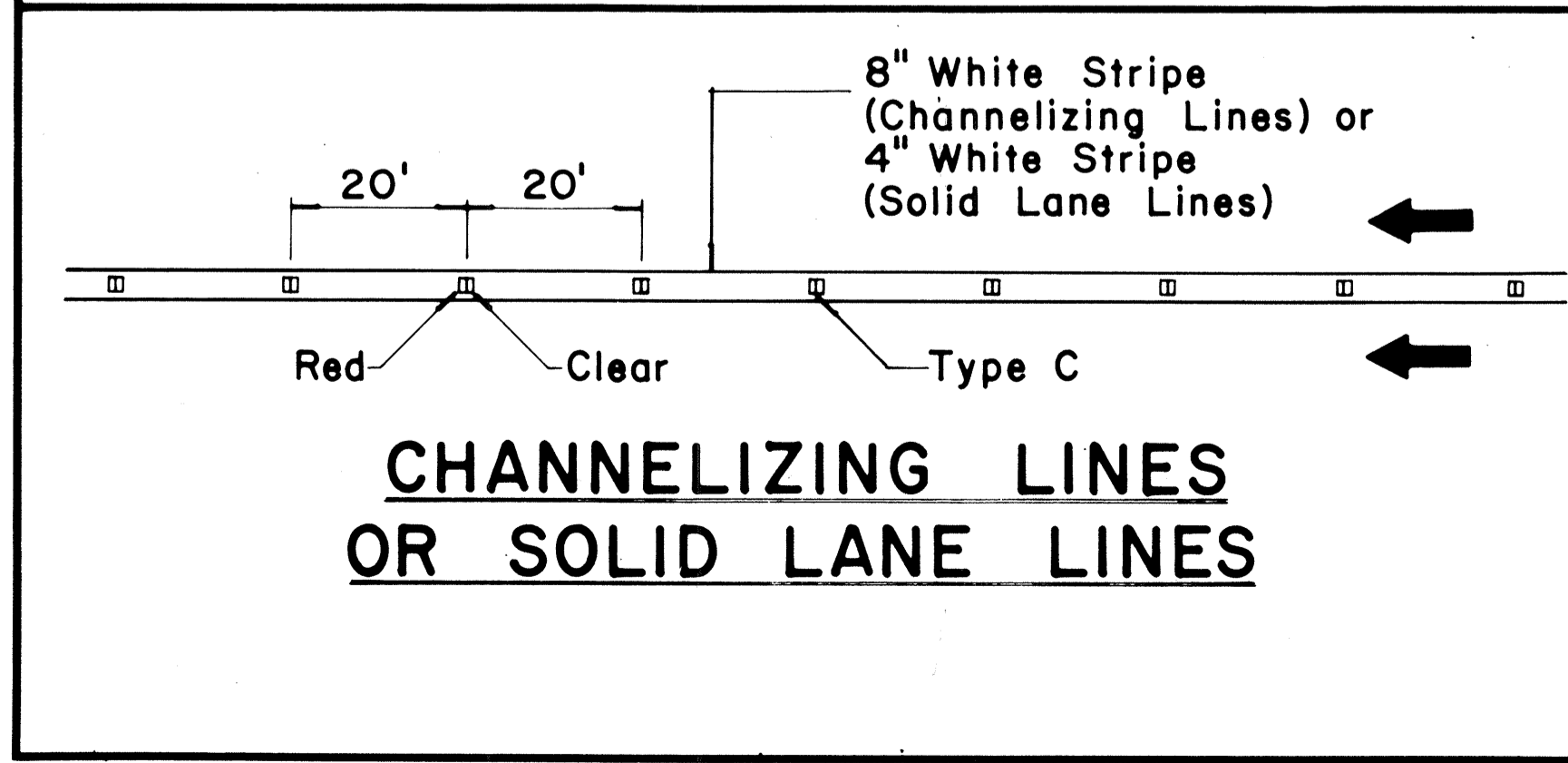
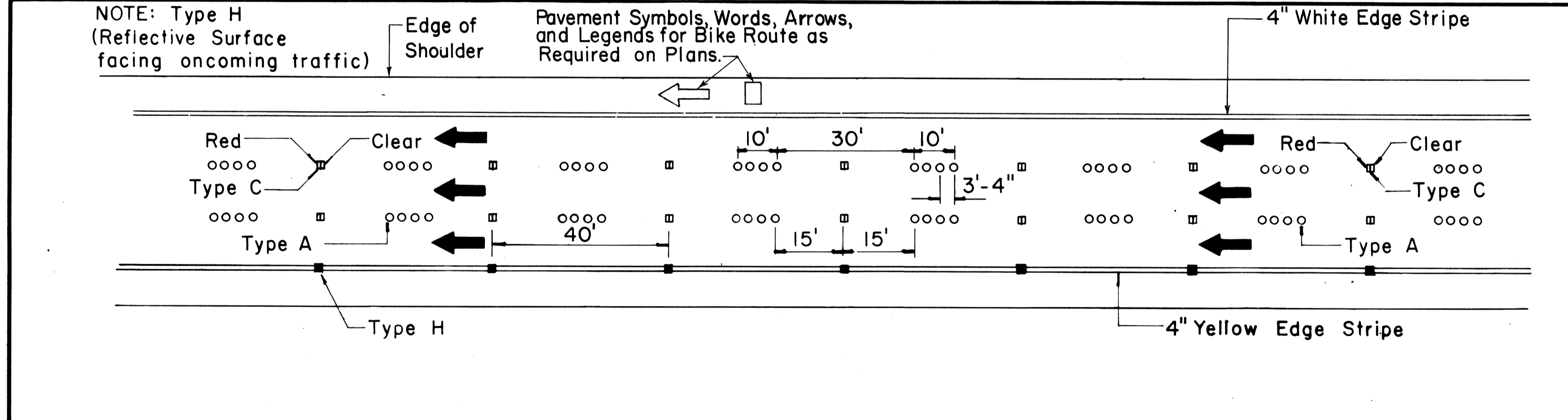
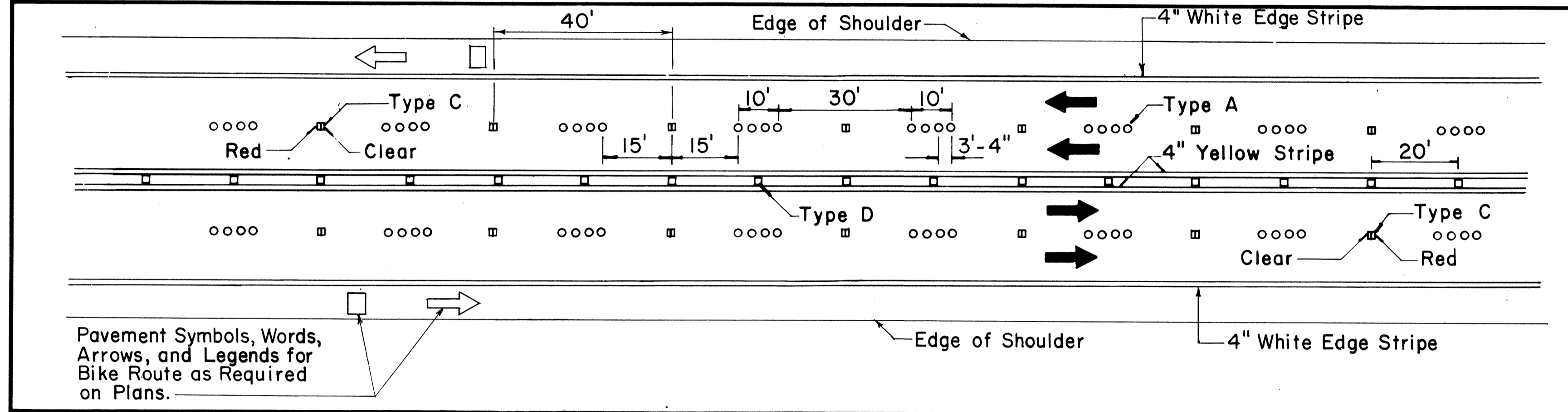
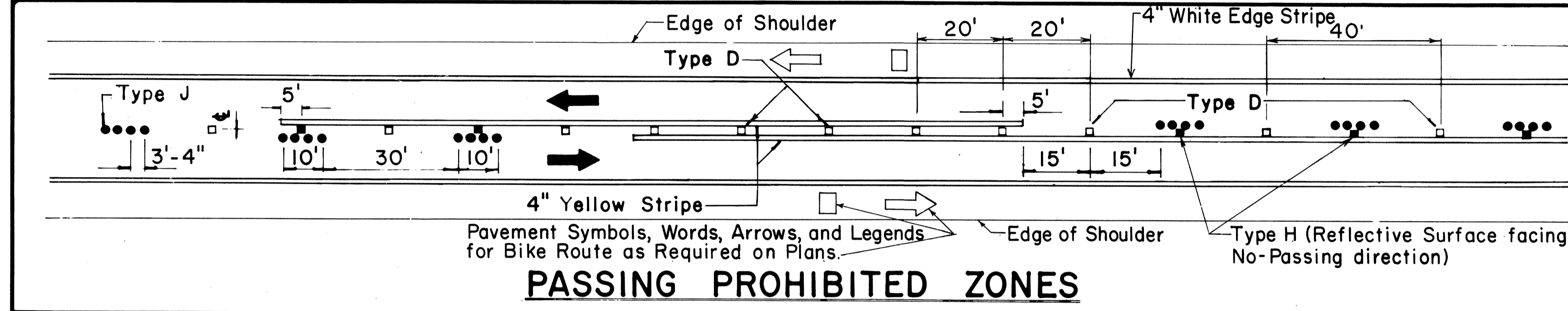
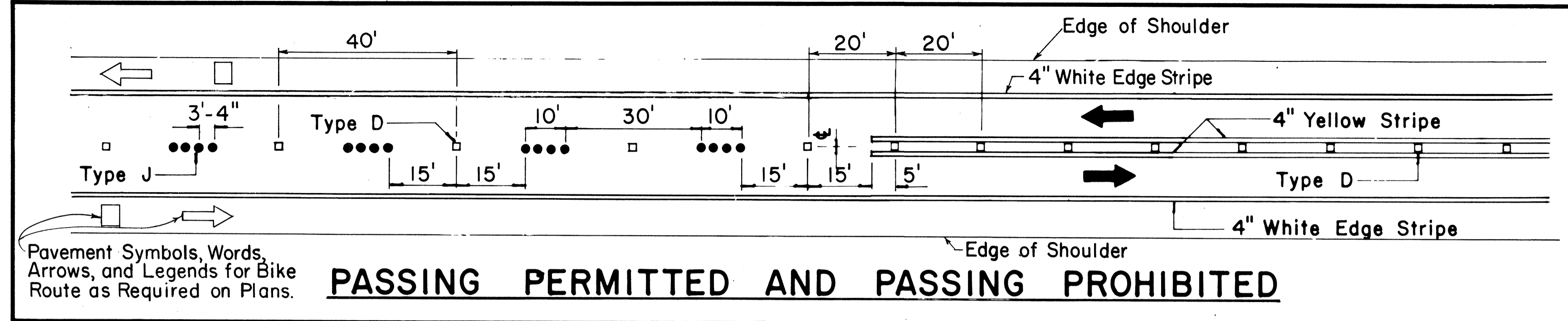
STATE OF HAWAII
 DEPARTMENT OF TRANSPORTATION
 HIGHWAYS DIVISION

STANDARD DETAILS
 MISCELLANEOUS REFLECTOR MARKERS

Not to scale June, 1977

DATE _____
 SURVEY PLOTTED BY _____
 DRAWN BY _____
 CHECKED BY _____
 NOTE BOOK _____
 QUANTITIES BY _____
 CHECKED BY _____
 No. _____

FED. ROAD DIST. NO.	STATE	FED. AID PROJ. NO.	FISCAL YEAR	SHEET NO.	TOTAL SHEETS
HAWAII	HAW.	SR-0750(6)	1983	26	27

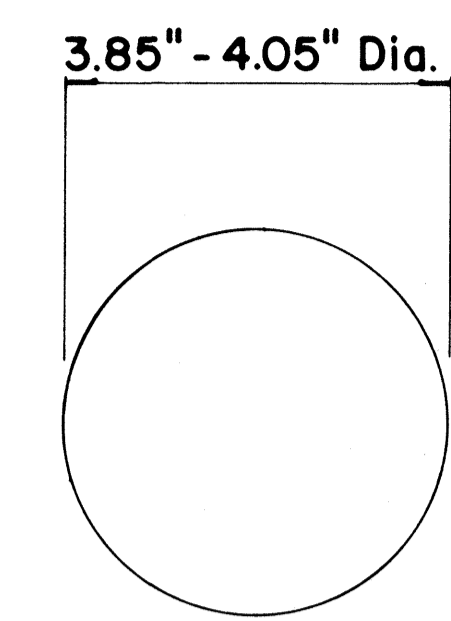


TWO - LANE

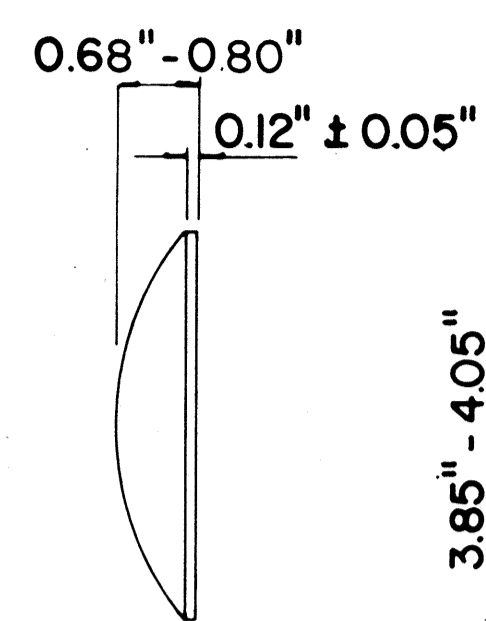
MULTI - LANE

DIVIDED HIGHWAY AND FREEWAY

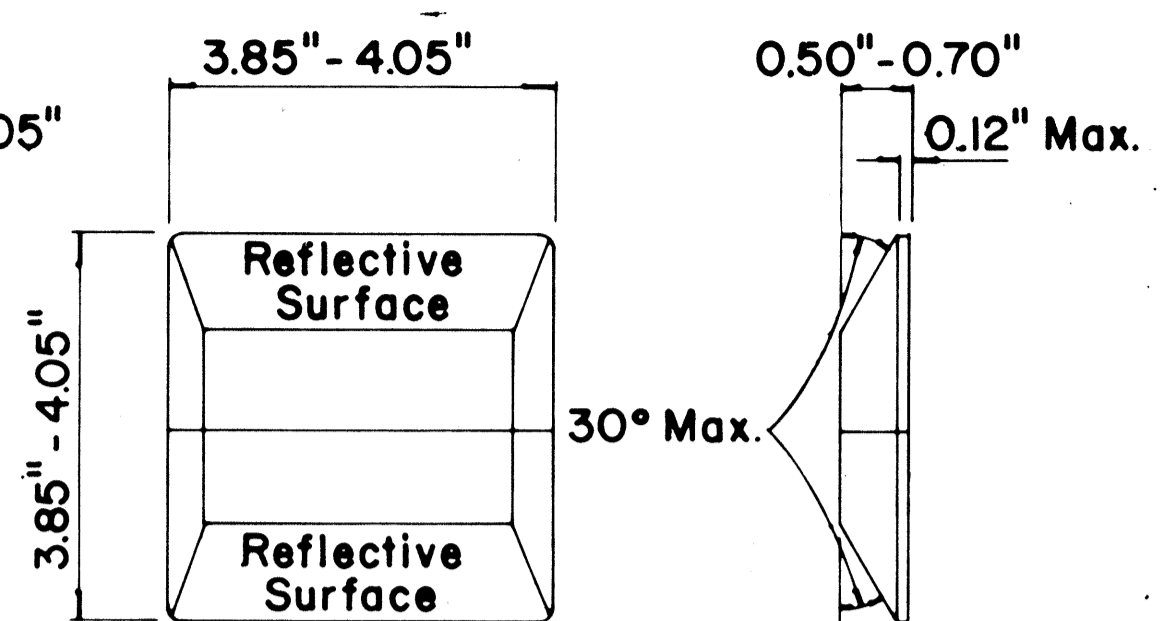
MISCELLANEOUS



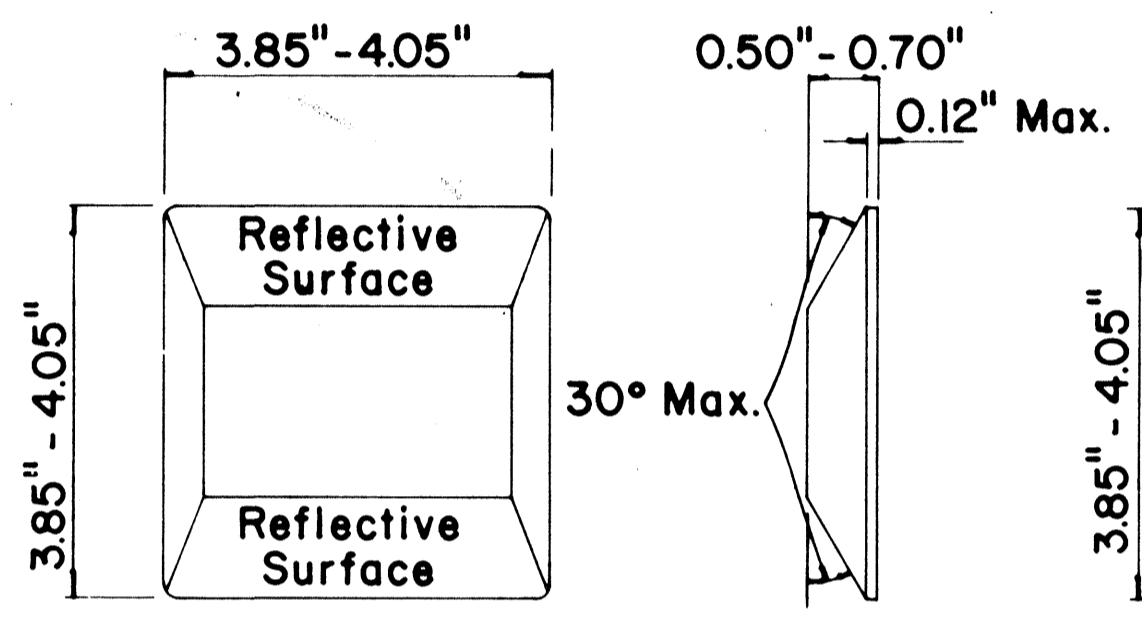
TYPE A
NON-REFLECTIVE WHITE MARKER



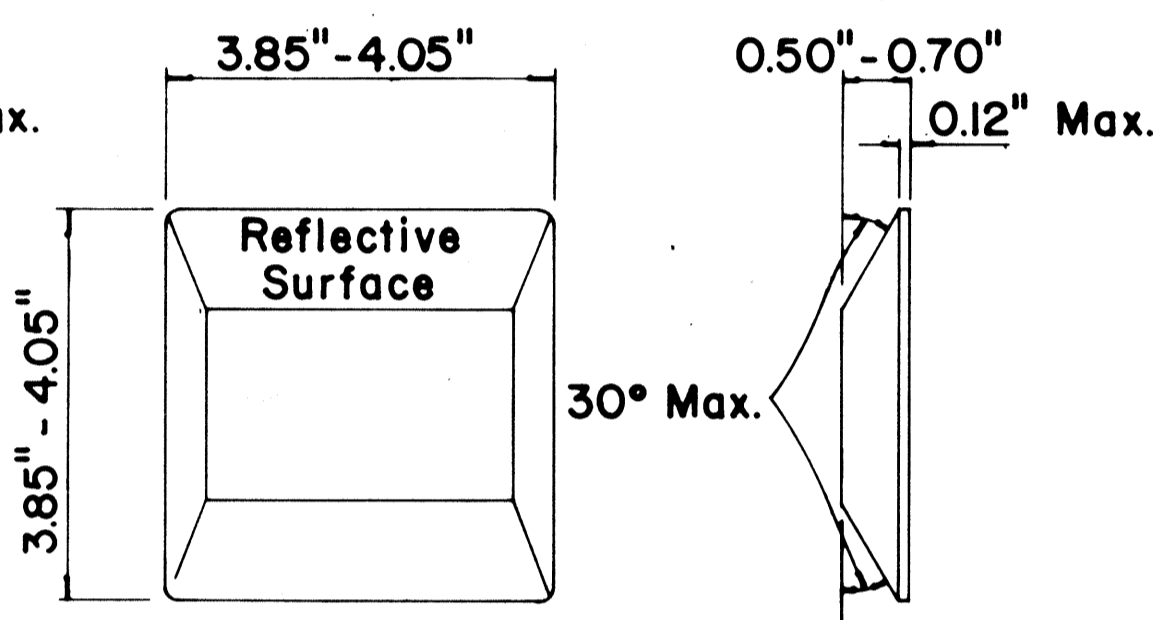
TYPE J
NON-REFLECTIVE YELLOW MARKER



TYPE C
RED-CLEAR REFLECTIVE MARKER



TYPE D
TWO-WAY YELLOW REFLECTIVE MARKER



TYPE H
ONE-WAY YELLOW REFLECTIVE MARKER

GENERAL NOTES

- Pavement marking and striping shall conform to the latest "Manual on Uniform Traffic Control Devices for Streets and Highways," and as amended.
- Layout and installation of pavement marking and striping shall be done by the Contractor. The Contractor shall check the layouts with the Engineer prior to performing work.

LEGEND

- Type A
- ◻ Type C
- ◻ Type D
- Type H
- Type J

APPROVAL RECOMMENDED:
Eiichi Tanaka 7/21/78
 TRAFFIC ENGINEER DATE

APPROVED:
Herbert D. Zakiyah 1/24/78
 ASSISTANT CHIEF, ENGINEERING DATE

No.	REVISION	APPROVED BY	DATE
1	Supersedes DT 300 approved 11/18/71.	H.T.	1/24/78
2	Delete Type A Markers from Bike Route Delineation.	H.T.	10/15/79

STATE OF HAWAII
 DEPARTMENT OF TRANSPORTATION
 HIGHWAYS DIVISION

STANDARD DETAILS
RAISED PAVEMENT MARKERS
AND STRIPING

Not to Scale July 1978
 SHEET No. 10 OF 11 SHEETS DT 300

DATE	
SURVEY PLOTTED BY	
PLAN	
TRACED BY	
DESIGNED BY	
NOTE BOOK	
QUANTITIES BY	
CHECKED BY	
No.	

