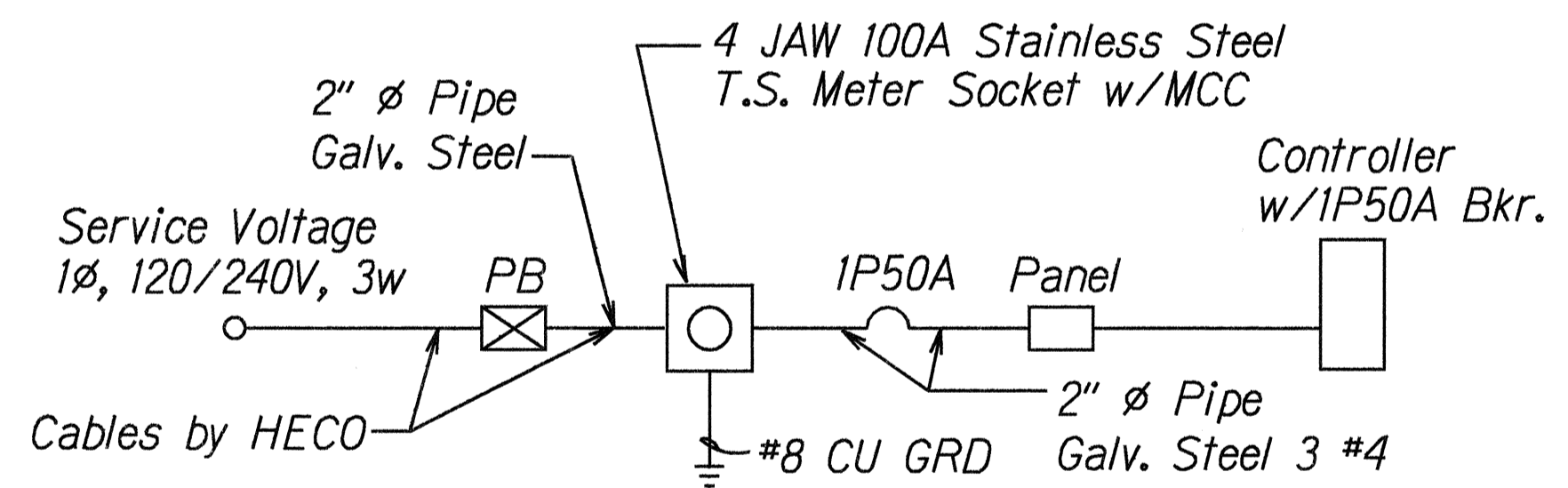
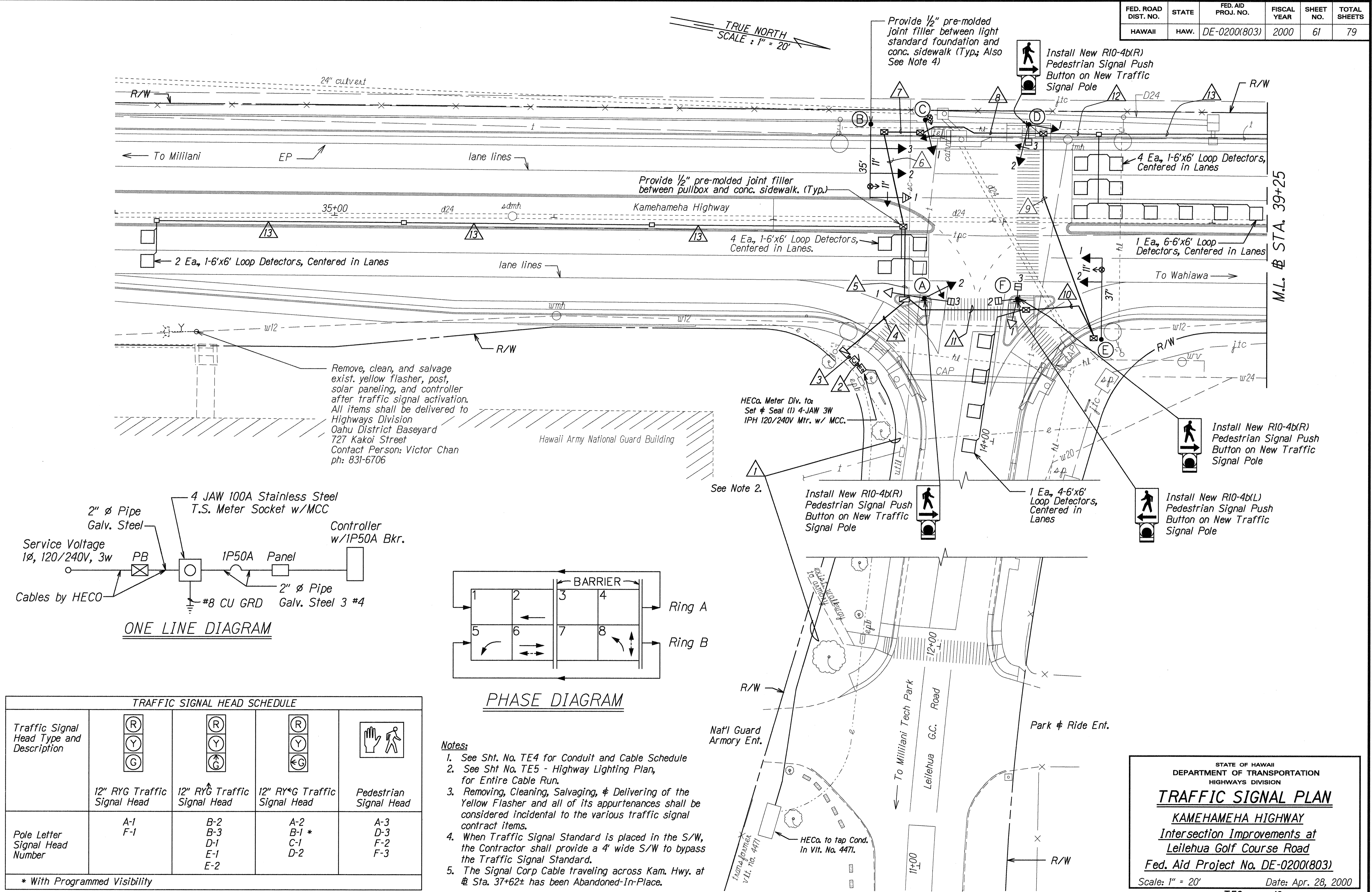
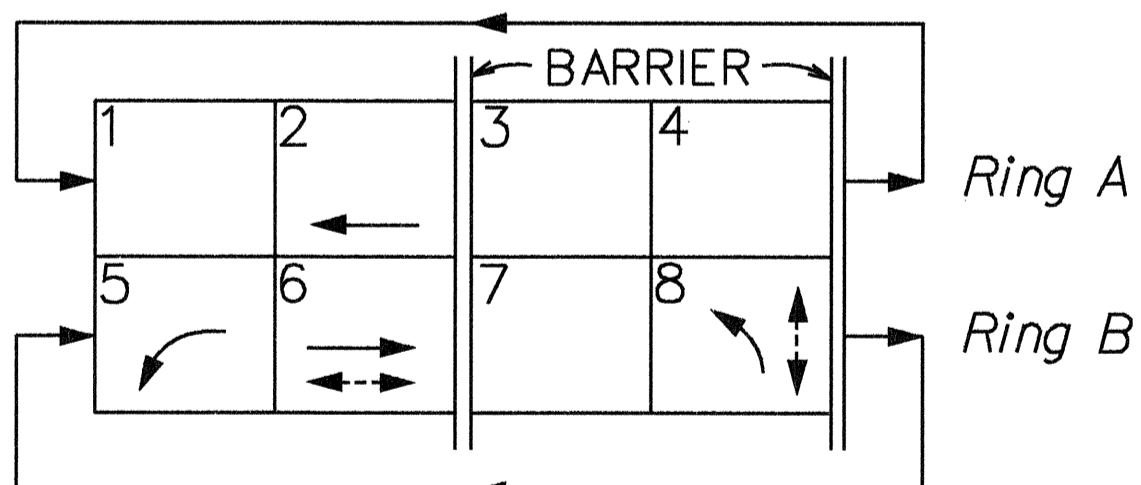


FED. ROAD DIST. NO.	STATE	FED. AID PROJ. NO.	FISCAL YEAR	SHEET NO.	TOTAL SHEETS
HAWAII	HAW.	DE-0200(803)	2000	61	79



ONE LINE DIAGRAM



PHASE DIAGRAM

TRAFFIC SIGNAL HEAD SCHEDULE				
Traffic Signal Head Type and Description				
	12" RYG Traffic Signal Head	12" RYG Traffic Signal Head	12" RYG Traffic Signal Head	Pedestrian Signal Head
Pole Letter Signal Head Number	A-1 F-1	B-2 B-3 D-1 E-1 E-2	A-2 B-1 * C-1 D-2	A-3 D-3 F-2 F-3

* With Programmed Visibility

- Notes:
- See Sht. No. TE4 for Conduit and Cable Schedule
 - See Sht. No. TE5 - Highway Lighting Plan, for Entire Cable Run.
 - Removing, Cleaning, Salvaging, & Delivering of the Yellow Flasher and all of its appurtenances shall be considered incidental to the various traffic signal contract items.
 - When Traffic Signal Standard is placed in the S/W, the Contractor shall provide a 4' wide S/W to bypass the Traffic Signal Standard.
 - The Signal Corp Cable traveling across Kam. Hwy. at Sta. 37+62± has been Abandoned-In-Place.

STATE OF HAWAII
DEPARTMENT OF TRANSPORTATION
HIGHWAYS DIVISION

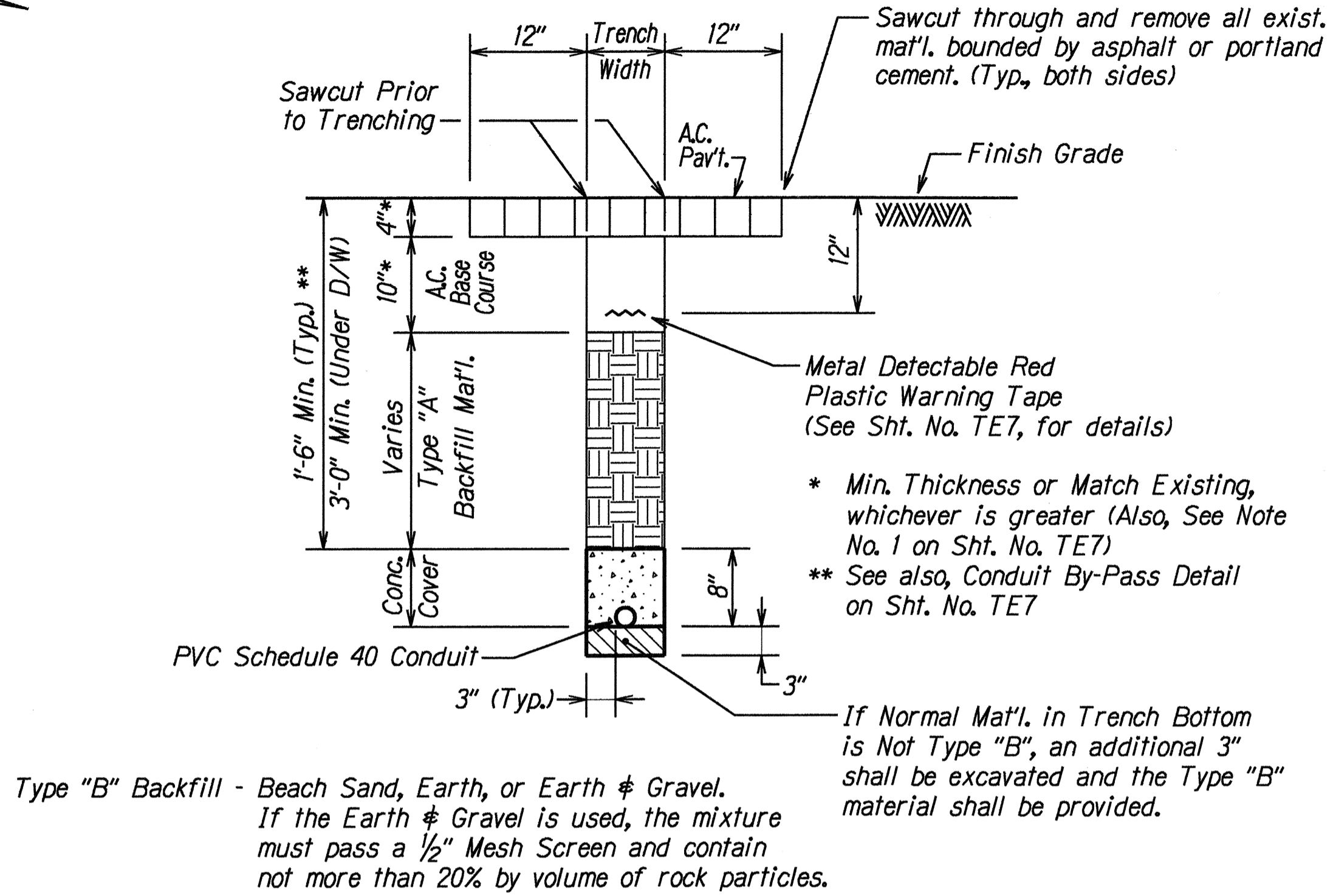
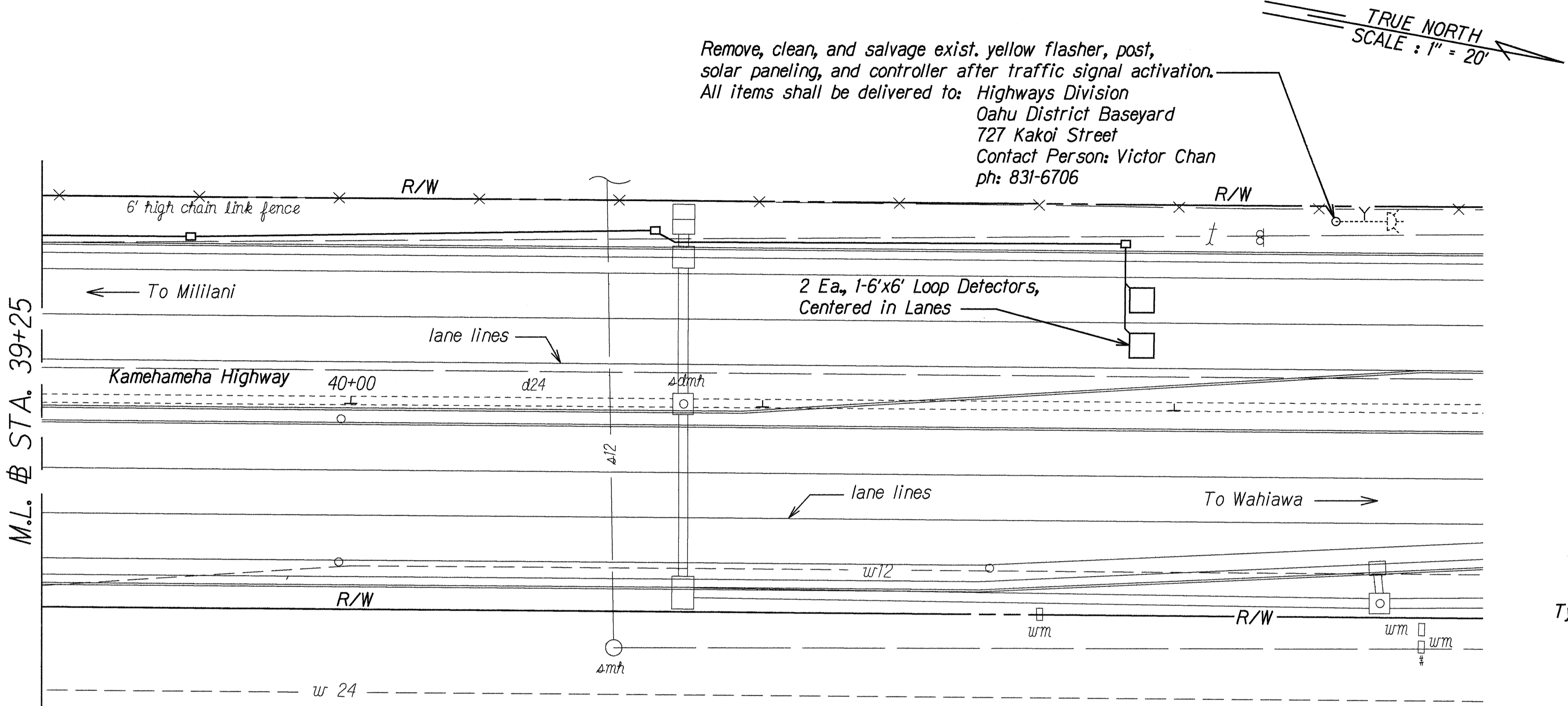
TRAFFIC SIGNAL PLAN
KAMEHAMEHA HIGHWAY
Intersection Improvements at
Leilehua Golf Course Road
Fed. Aid Project No. DE-0200(803)

Scale: 1" = 20'
Date: Apr. 28, 2000

SHEET No. TE3 OF 13 SHEETS

SURVEY PLOTTED BY	DATE
DRAWN BY	4/28/00
CHECKED BY	
NOTED BY	
DESIGNED BY	
QUANTITIES BY	
CHECKED BY	

FED. ROAD DIST. NO.	STATE	FED. AID PROJ. NO.	FISCAL YEAR	SHEET NO.	TOTAL SHEETS
HAWAII	HAW.	DE-0200(803)	2000	62	79



DETAIL - HECO POWER CABLE DUCT SECTION
Not To Scale

1	CONDUIT (See Detail on this Sht.)	CABLE
	2"	HECO Power Cable

2	CONDUIT	CABLE
	2"	1-3C #6 (Type 6)

3	CONDUIT	CABLE
	3"	2-26C #14 (Type 1)
	2"	4-2C #14 (Type 2)
	2"	4-2C #14 (Type 2)
	2"	3-2C #20 (Type 7)
	2"	Spare *
	2"	Spare **

4	CONDUIT (Concrete Encased)	CABLE
	3"	2-26C #14 (Type 1)
	2"	4-2C #14 (Type 2)
	2"	4-2C #14 (Type 2)
	2"	3-2C #20 (Type 7)
	2"	Spare *
	2"	Spare **

5	CONDUIT (Concrete Encased)	CABLE
	2"	1-26C #14 (Type 1)
	2"	2-2C #14 (Type 2)
	2"	2-2C #20 (Type 7)
	2"	Spare **

6	CONDUIT (Concrete Encased)	CABLE
	2"	1-26C #14 (Type 1)
	2"	2-2C #20 (Type 7)
	2"	Spare **

7	CONDUIT	CABLE
	2"	1-26C #14 (Type 1)
	2"	1-2C #20 (Type 7)
	2"	Spare **

8	CONDUIT	CABLE
	2"	1-26C #14 (Type 1)
	2"	Spare
	2"	Spare **

9	CONDUIT (Concrete Encased)	CABLE
	2"	1-26C #14 (Type 1)
	2"	4-2C #14 (Type 2)
	2"	Spare **

10	CONDUIT (Concrete Encased)	CABLE
	2"	1-26C #14 (Type 1)
	2"	4-2C #14 (Type 2)
	2"	1-2C #20 (Type 7)
	2"	Spare *
	2"	Spare **

11	CONDUIT (Concrete Encased)	CABLE
	2"	1-26C #14 (Type 1)
	2"	4-2C #14 (Type 2)
	2"	2-2C #14 (Type 2)
	2"	1-2C #20 (Type 7)
	2"	Spare *
	2"	Spare **

12	CONDUIT	CABLE
	2"	3-2C #14 (Type 2)

13	CONDUIT	CABLE
	2"	1-2C #14 (Type 2)

* Future Interconnect Conduit
** Future Fiberoptic Conduit

Note: Removing, cleaning, salvaging & delivering of the yellow flasher and all appurtenances shall be considered incidental to the various traffic signal contract items.

STATE OF HAWAII
DEPARTMENT OF TRANSPORTATION
HIGHWAYS DIVISION

TRAFFIC SIGNAL PLAN

KAMEHAMEHA HIGHWAY
Intersection Improvements at
Leilehua Golf Course Road
Fed. Aid Project No. DE-0200(803)

Scale: 1" = 20' Date: Apr. 23, 2000

SHEET No. TE4 OF 13 SHEETS