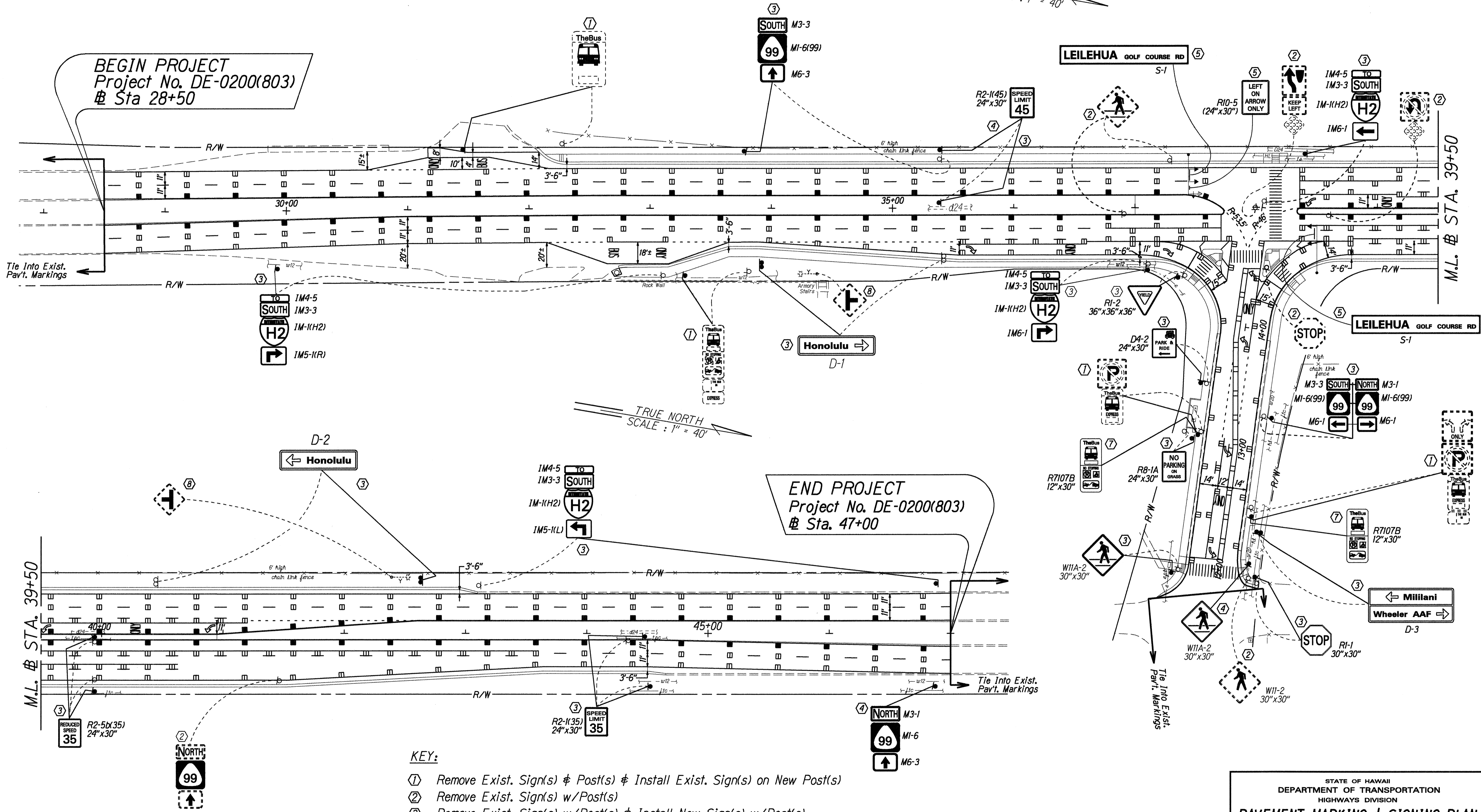


FED. ROAD DIST. NO.	STATE	PROJ. NO.	FISCAL YEAR	SHEET NO.	TOTAL SHEETS
HAWAII	HAW.	DE-0200(803)	2000	56	79



BEGIN PROJECT
Project No. DE-0200(803)
Sta 28+50

END PROJECT
Project No. DE-0200(803)
Sta. 47+00

- KEY:**
- ① Remove Exist. Sign(s) # Post(s) # Install Exist. Sign(s) on New Post(s)
 - ② Remove Exist. Sign(s) w/Post(s)
 - ③ Remove Exist. Sign(s) w/Post(s) # Install New Sign(s) w/Post(s)
 - ④ Install New Sign(s) w/Post(s)
 - ⑤ Install New Sign on Exist. Light/Traffic Signal Standard
 - ⑥ Remove Exist. Sign(s) # Install New on Exist. Light/Traffic Signal
 - ⑦ Install New Sign(s)
 - ⑧ Remove Exist. Sign(s)

SURVEY PLOTTED BY	DATE
DRAWN BY	
TRACED BY	
QUANTITIES BY	
CHECKED BY	
ORIGINAL PLAN	
NOTE BOOK	
No. <i>Kamipi</i>	

STATE OF HAWAII
DEPARTMENT OF TRANSPORTATION
HIGHWAYS DIVISION

PAVEMENT MARKING & SIGNING PLAN

KAMEHAMEHA HIGHWAY
Intersection Improvements at
Leilehua Golf Course Road
Fed. Aid. Project No. DE-0200(803)

Scale: 1" = 40' Date: May 9, 2000

SHEET No. 1 OF 1 SHEETS