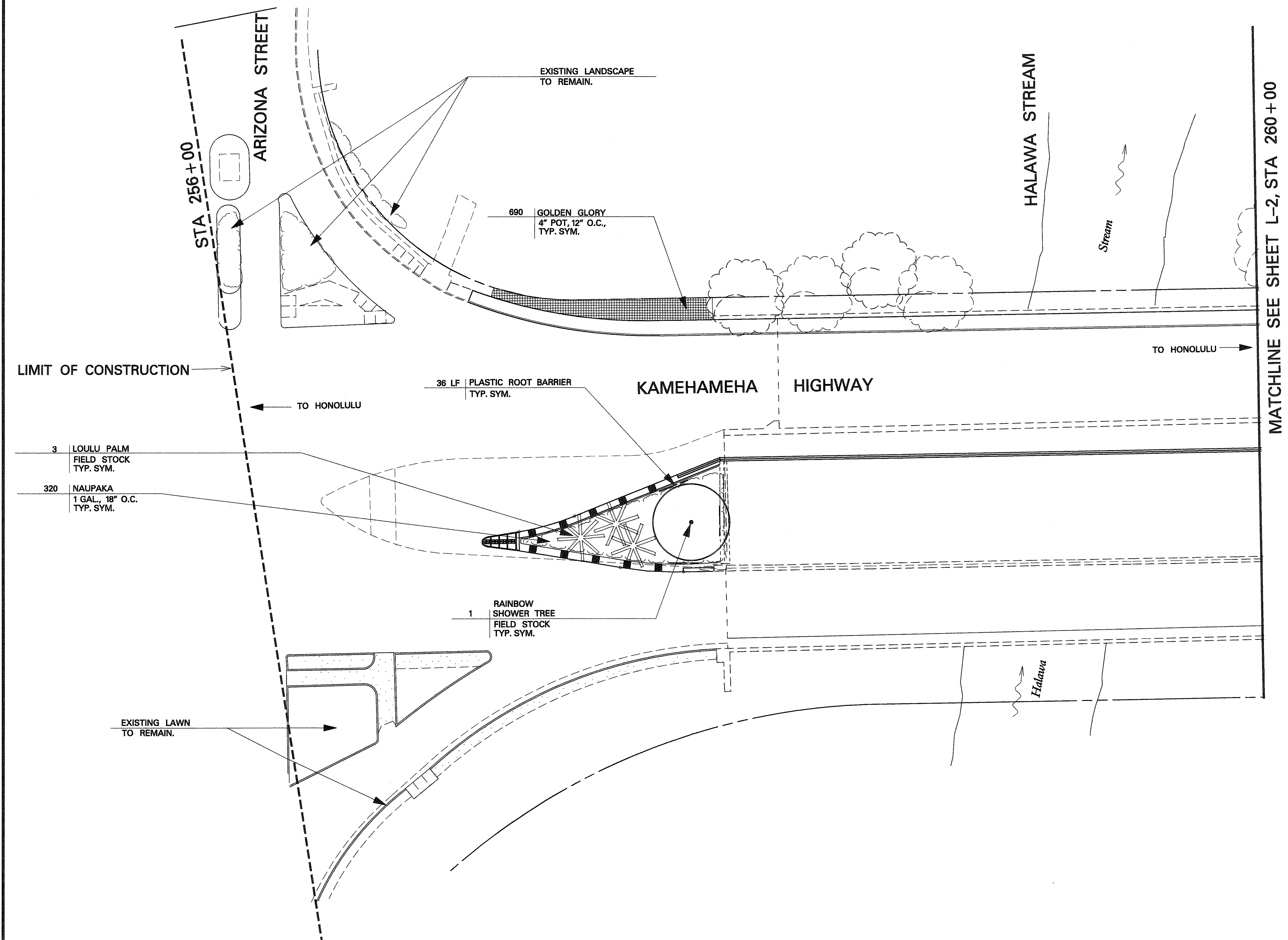
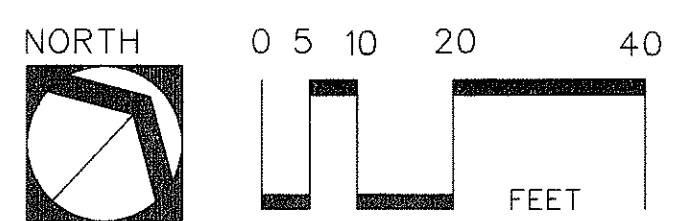


FED. ROAD DIST. NO.	STATE	FED. AID PROJ. NO.	FISCAL YEAR	SHEET NO.	TOTAL SHEETS
HAWAII	HAW.	BR-099-1(19)	2001	97	105



ORIGINAL PLAN	SURVEY PLOTTED BY	DATE
NOTE BOOK	DRAWN BY	
	DESIGNED BY	
	QUANTITIES BY	
	CHECKED BY	



STATE OF HAWAII
DEPARTMENT OF TRANSPORTATION
HIGHWAYS DIVISION

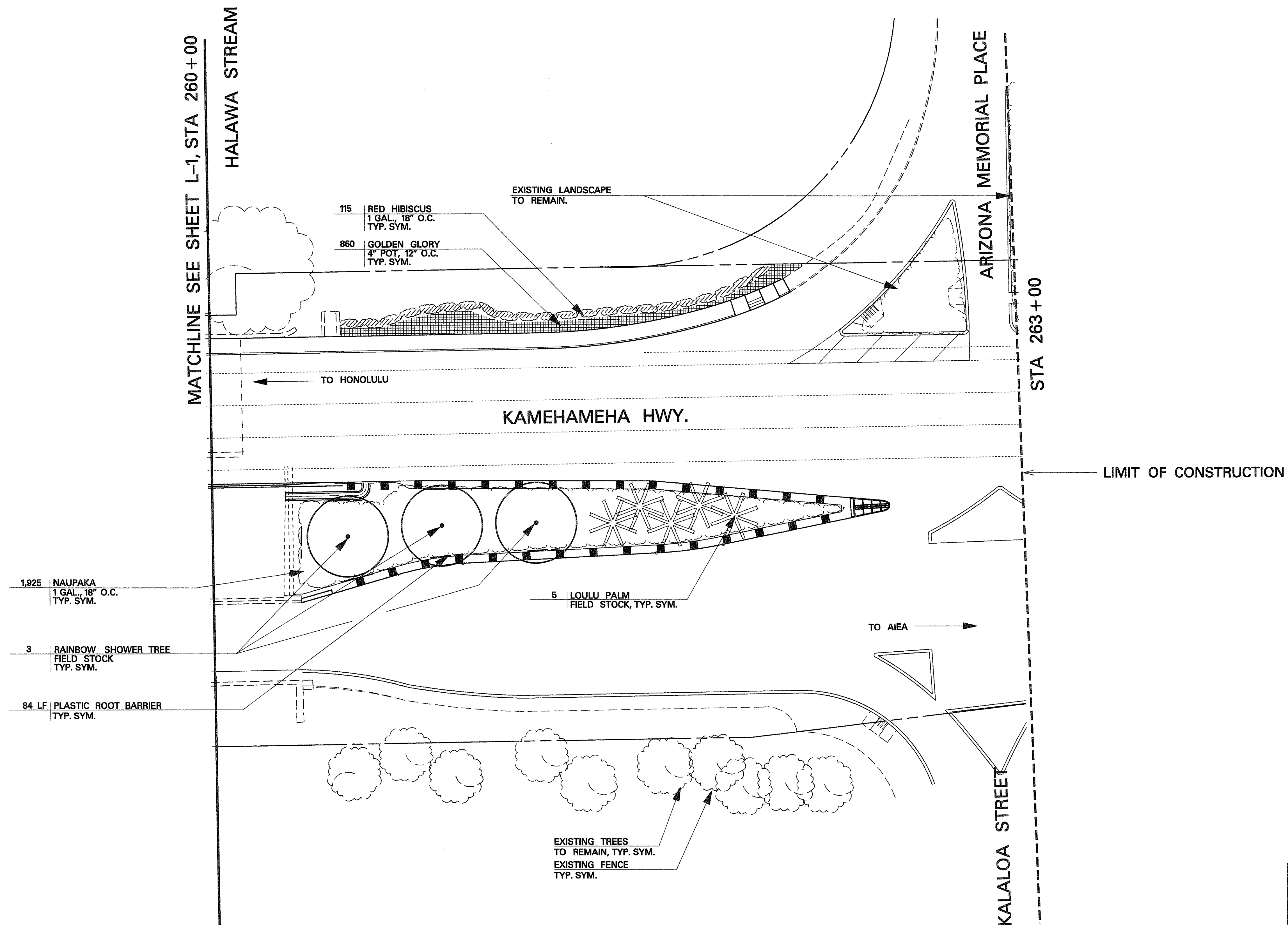
PLANTING PLAN

*KAMEHAMEHA HIGHWAY
Halawa Stream Bridge (Inbound) Replacement
Federal Aid Project No. BR-099-1(19)*

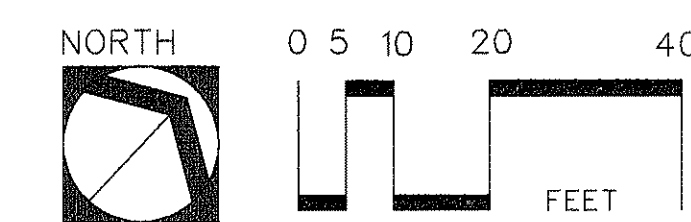
Scale: 1"=20' Date: Jan., 2001

SHEET No. L-1 OF 3 SHEETS

FED. ROAD DIST. NO.	STATE	FED. AID PROJ. NO.	FISCAL YEAR	SHEET NO.	TOTAL SHEETS
HAWAII	HAW.	BR-099-1(19)	2001	98	105



ORIGINAL PLAN	SURVEY PLOTTED BY	DATE
NOTE BOOK	DRAWN BY	
	DESIGNED BY	
	QUANTITIES BY	
	CHECKED BY	



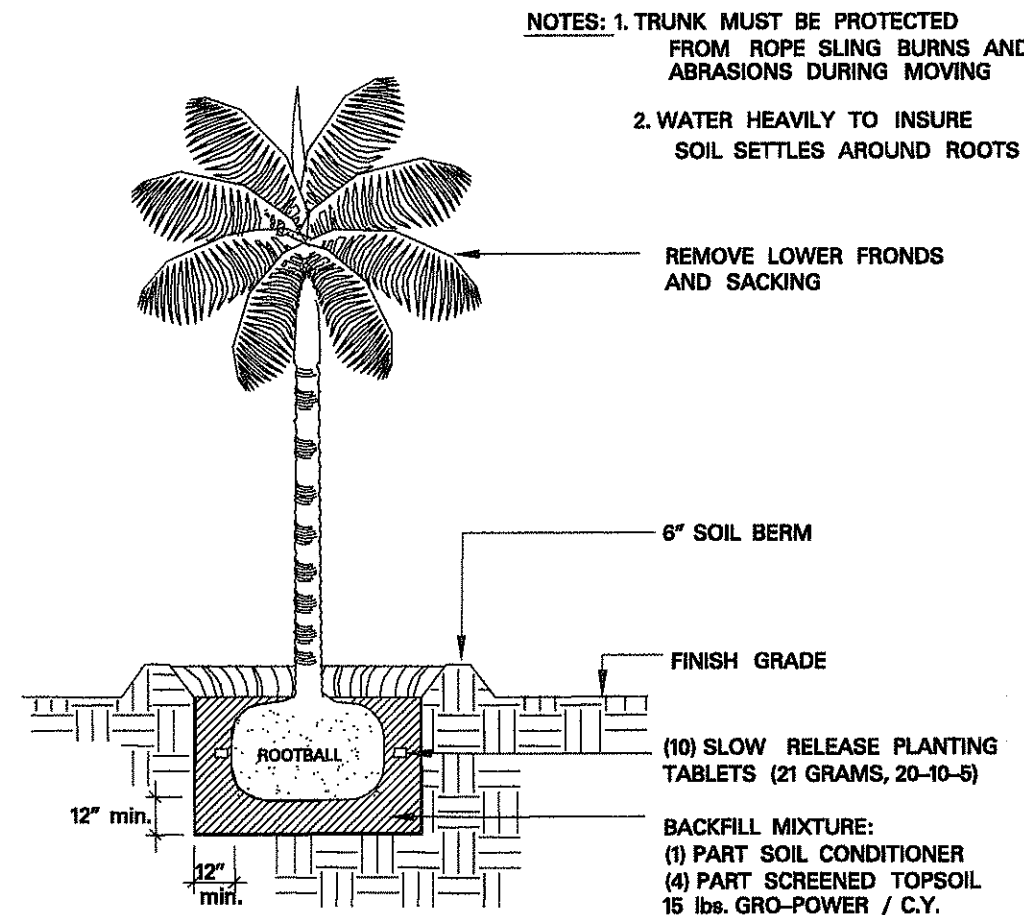
STATE OF HAWAII
DEPARTMENT OF TRANSPORTATION
HIGHWAYS DIVISION

PLANTING PLAN

KAMEHAMEHA HIGHWAY
Halawa Stream Bridge (Inbound) Replacement
Federal Aid Project No. BR-099-1(19)

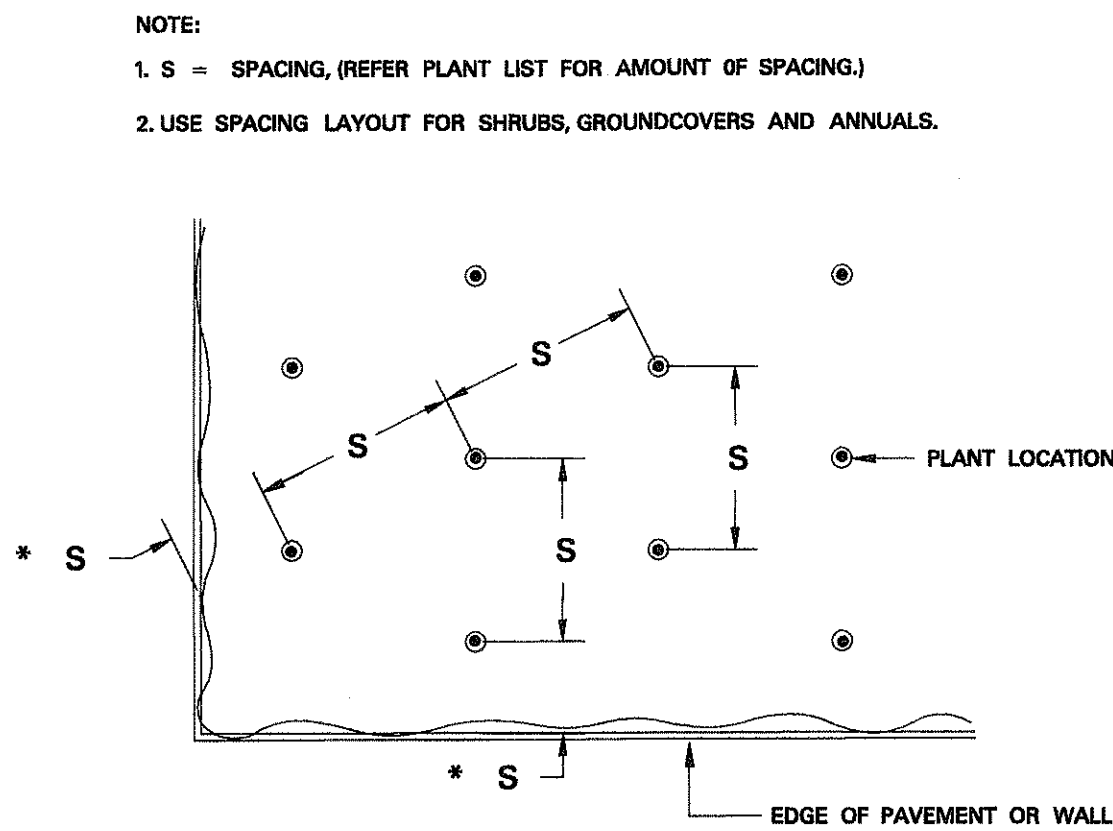
Scale: 1"=20' Date: Jan, 2001

FED. ROAD DIST. NO.	STATE	FED. AID PROJ. NO.	FISCAL YEAR	SHEET NO.	TOTAL SHEETS
HAWAII	HAW.	BR-099-1(19)	2001	99	105



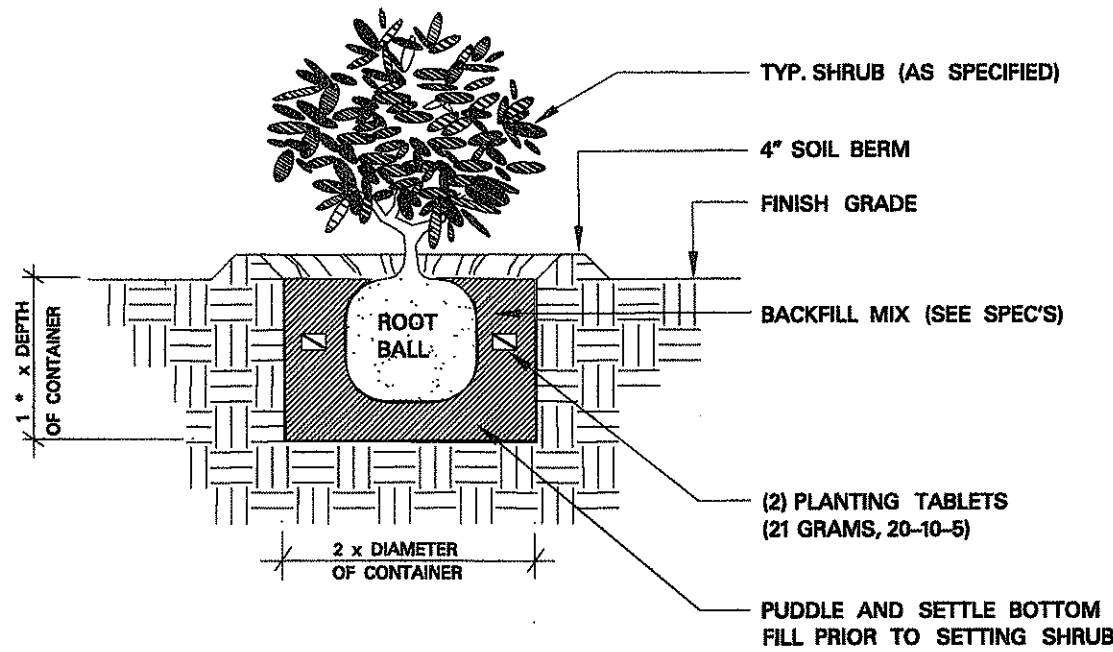
1 SINGLE PALM PLANTING DETAIL
NOT TO SCALE

CADD REF: P-105a



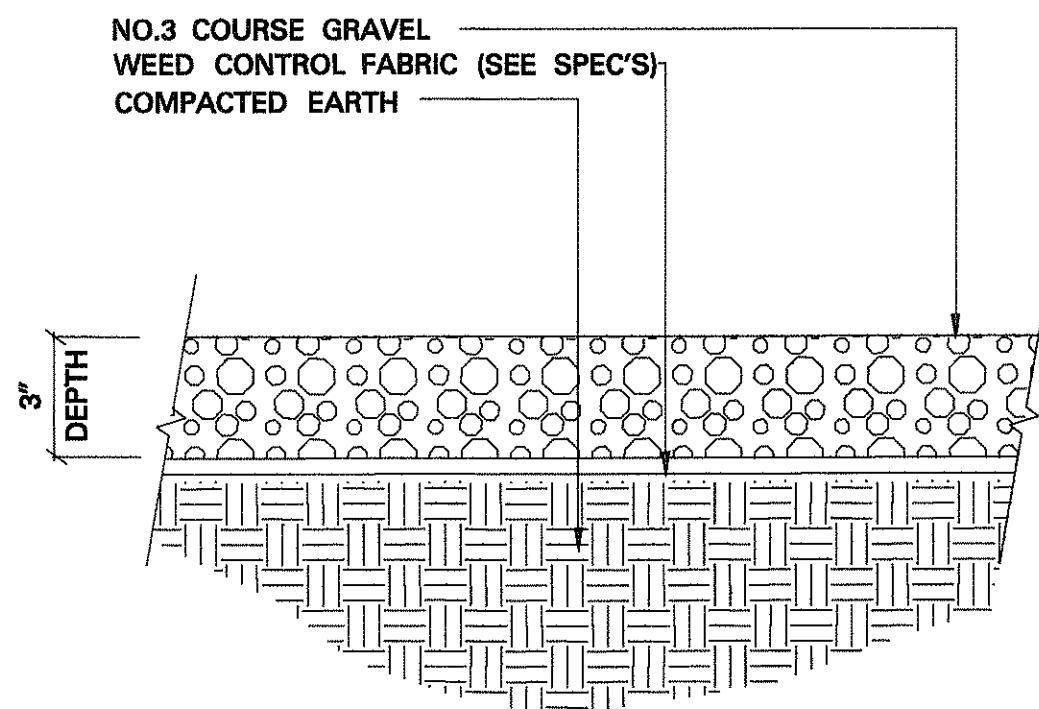
5 TRIANGULAR PLANT SPACING DIAGRAM
NOT TO SCALE

CADD REF: P-301



3 SHRUB PLANTING DETAIL
NOT TO SCALE

CADD REF: P-301



4 CINDER/GRAVEL DETAIL
NOT TO SCALE

SURVEY PLOTTED BY	DATE
DRAWN BY	
DESIGNED BY	
CHECKED BY	
ORIGINAL PLAN	
NOTE BOOK	
DATE	

P L A N T L I S T				
COMMON NAME	BOTANICAL NAME	SIZE	HEIGHT	REMARKS
TREES AND PALMS				
LOULU PALM	Pritchardia affinis	Field Stock	4'-6' Trunk Height	
RAINBOW SHOWER TREE	Cassia javanica x C. fistula	Field Stock	12'- 15' Height min.	
SHRUBS and GROUNDCOVERS				
NAUPAKA	Scaevola frutescens	1 Gallon	Plant at 18" O.C. Triangle Spacing	
RED HIBISCUS	Hibiscus ros-sinensis	1 Gallon	Plant at 18" O.C. Triangle Spacing	
GOLDEN GLORY	Arachis pinto	4" Pot	Plant at 12" O.C. Triangle Spacing	
AKULKULI	Sesuvium Portulacastrum	4" Pot	Plant at 12" O.C. Triangle Spacing	
MISCELLANEOUS				
IMPORTED SCREENED SOIL	4" Layer			See specifications
SOIL AMENDMENT MULCH	1" Layer			See specifications
ROOT BARRIER	24" Depth			See detail & spec's

PLANT NOTES:

- Contractor shall field verify all plant quantities and dimensions prior to installation. Quantities shown on the Plans are for convenience only.
- Contractor shall be responsible for locating and protecting all existing utilities and irrigation system.
- Notify and meet with the Engineer prior to plant installation for verification/interpretation of plans.
- Notify Engineer of any discrepancies in plant locations or insufficient plant quantities due to differences in plan and actual field conditions.
- Notify Engineer 30 days prior to planting operations for approval of all plant material at place of growth. All plant material not approved by the Engineer will be subject to rejection.
- The Contractor shall flag all palm and tree locations and lay out all plastic headers locations prior to installation for approval by Engineer. Notify Engineer (5) working days in advance.
- Contractor shall confirm with his suppliers in advance that plants are available.
- Rainbow Shower tree shall have a min. clearance from the rear of the guardrail post of 4'-0".

STATE OF HAWAII
DEPARTMENT OF TRANSPORTATION
HIGHWAYS DIVISION

PLANTING PLAN

KAMEHAMEHA HIGHWAY
Halawa Stream Bridge (Inbound) Replacement
Federal Aid Project No. BR-099-1(19)

Scale: None Date: Jan, 2001

SHEET No. L-3 OF 3 SHEETS