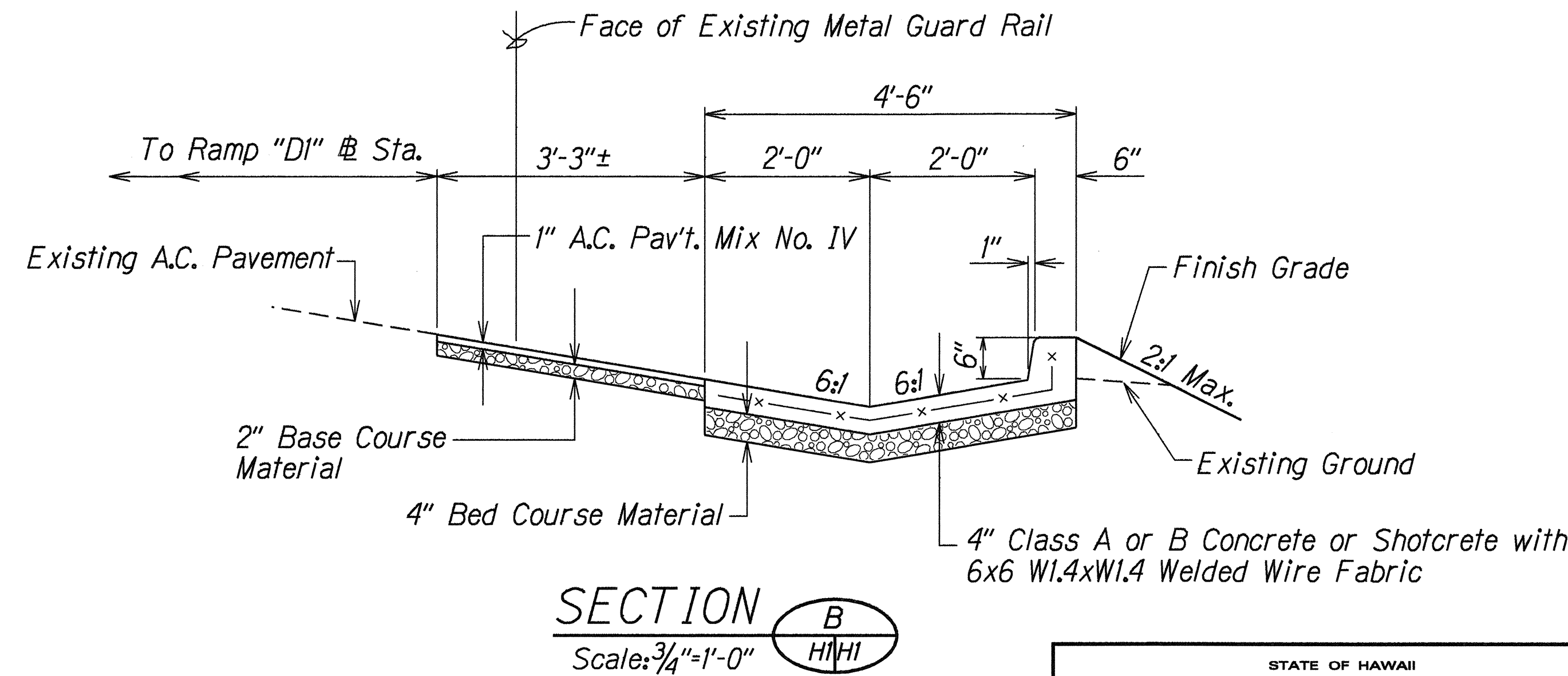
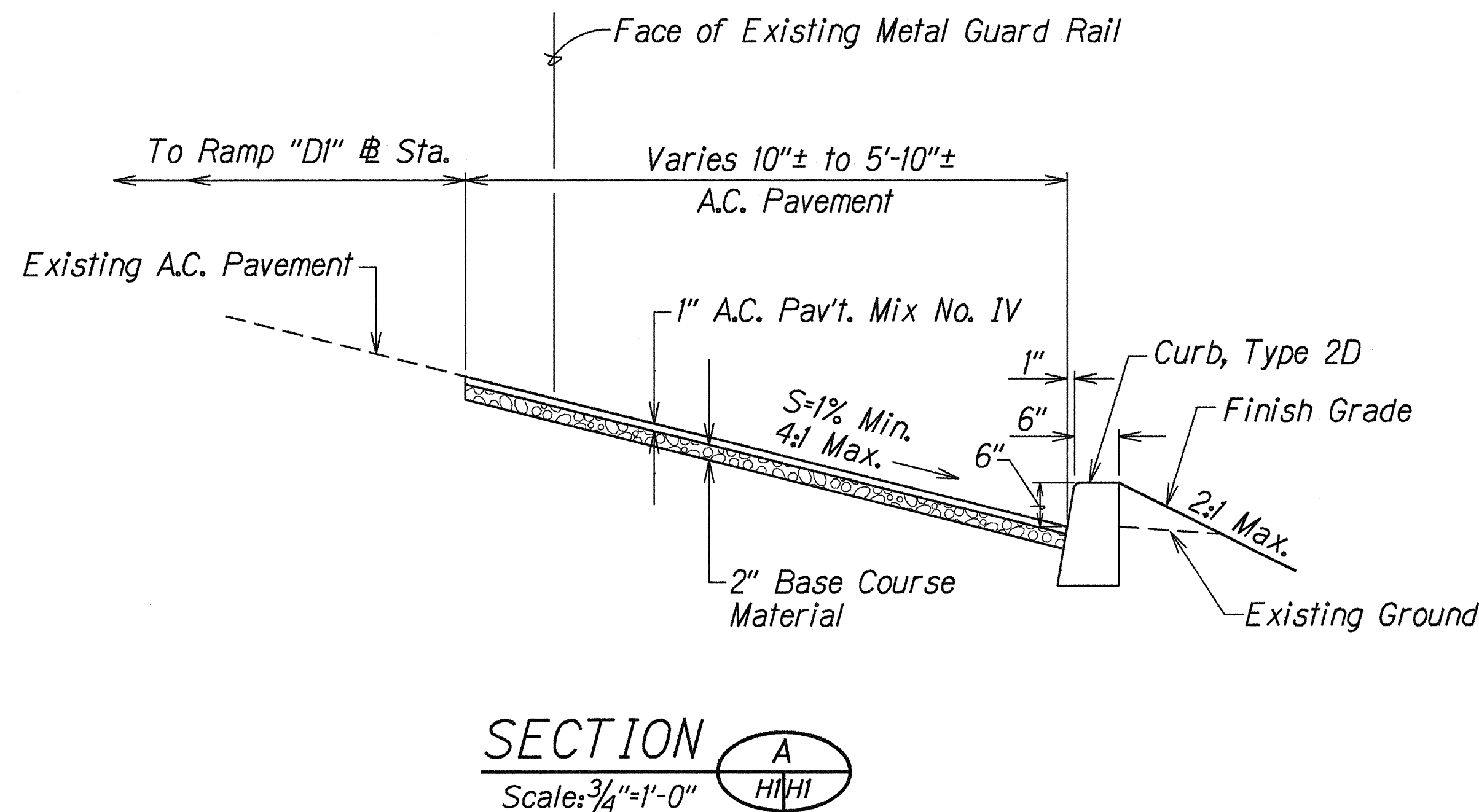
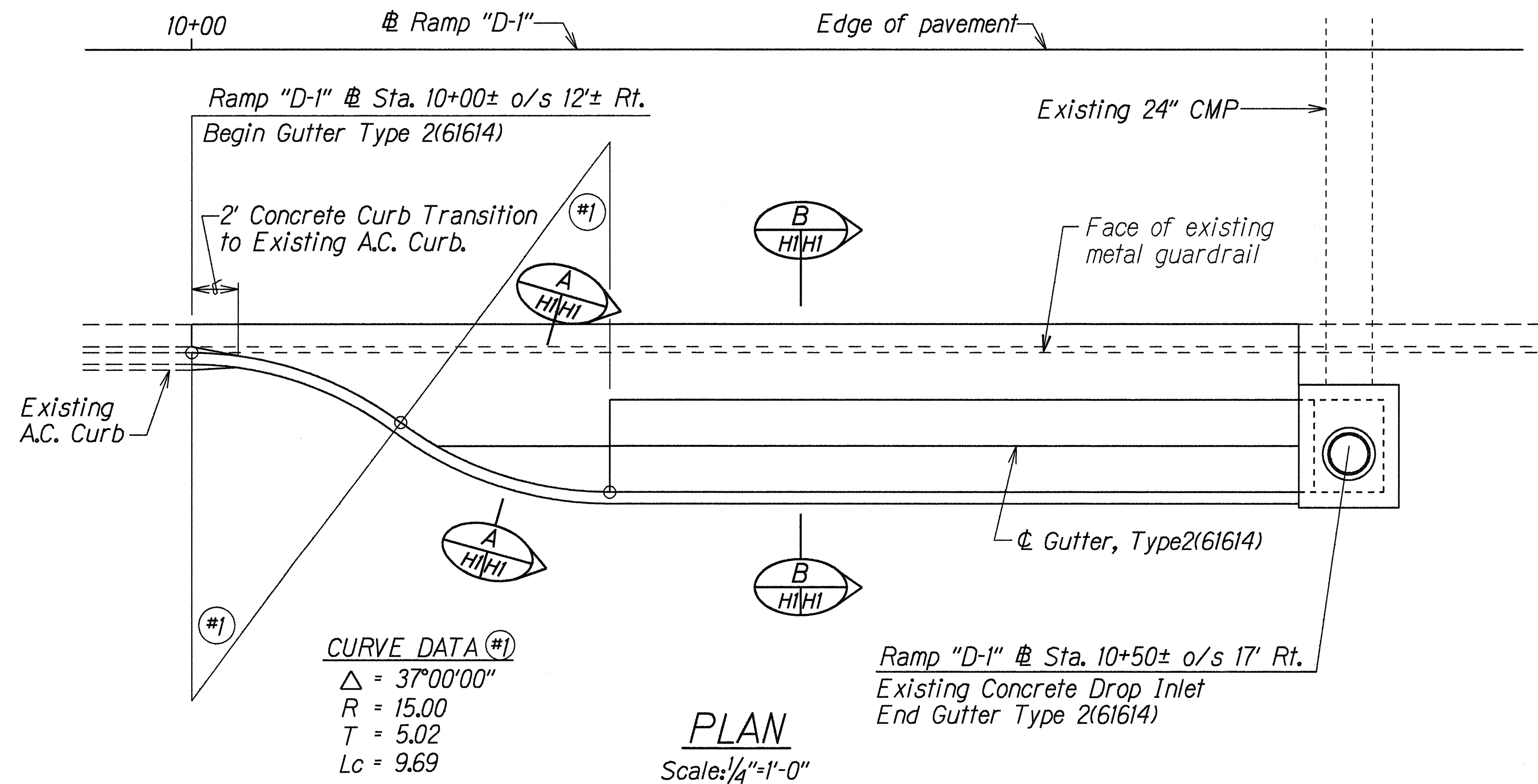


FED. ROAD DIST. NO.	STATE	FED. AID PROJ. NO.	FISCAL YEAR	SHEET NO.	TOTAL SHEETS
HAWAII	HAW.	STP-099-1(13)	1995	27	58



## GENERAL NOTES:

- Existing drainage systems will be functional at all times during construction. The Contractor is to furnish materials, equipment, labor, tools and incidentals necessary to maintain flow. The cost for this work shall be incidental to the various Contract Items.
- The Contractor shall verify the locations of all existing culverts and utilities in the field. Any existing culverts and utilities damaged during construction shall be repaired or replaced by the Contractor at his own expense.
- Only non-pneumatic type of drills as approved by the Engineer will be permitted for drilling holes in concrete. Where indicated on plans, the approximate diameter of drilled holes for installation of dowels shall be  $\frac{1}{4}"$ ; voids shall be filled with epoxy grout or as directed by the Engineer. The work shall be considered incidental to the various contract items.
- Concrete shall be Class A unless otherwise noted.
- Chamfer all exposed concrete edges 1".
- The exact locations of the Lined Trapezoidal Drainage Ditches shown at Waipahu Street @ Sta. 0+81± and @ Sta. 1+38± shall be determined by the Field Engineer. The Drainage ditches shall be located at the low points. Removing existing A.C. spillway at @ Sta. 0+81± shall not be paid for separately but shall be considered incidental to Item No. 640.1000 - Lined Trapezoidal Drainage Ditch.
- Demolishing and removing existing A.C. Berm at Ramp "D-1", @ Sta. 0+77± to @ Sta. 2+77± shall not be paid for separately but shall be considered incidental to Item No. 609.6000 - Bituminous Curb, Type 6.
- The exact alignment of the Gutter, Type 2(61614) at Ramp "D-1" @ Sta. 10+00± to @ Sta. 10+50± shall be determined by the Field Engineer.
- Concrete curb at Ramp "D-1" @ Sta. 10+00± o/s 12± Rt. to @ Sta. 10+50± o/s 17± Rt. shall not be paid for separately, but shall be considered incidental to 609.1000 - Gutter, Type 2(61614).
- New A.C. Pavement, Mix No. IV and A.C. Basecourse shall be paid for under the various paving items.

## DETAIL OF GUTTER TYPE 2(61614)

ORIGINAL PLAN	DATE	9/19/94
SURVEY PLOTTED BY		
DRAWN BY		
TRACED BY		
CHECKED BY		
NOTED BY		
QUANTITIES BY		
CHECKED BY		

STATE OF HAWAII  
DEPARTMENT OF TRANSPORTATION  
HIGHWAYS DIVISION

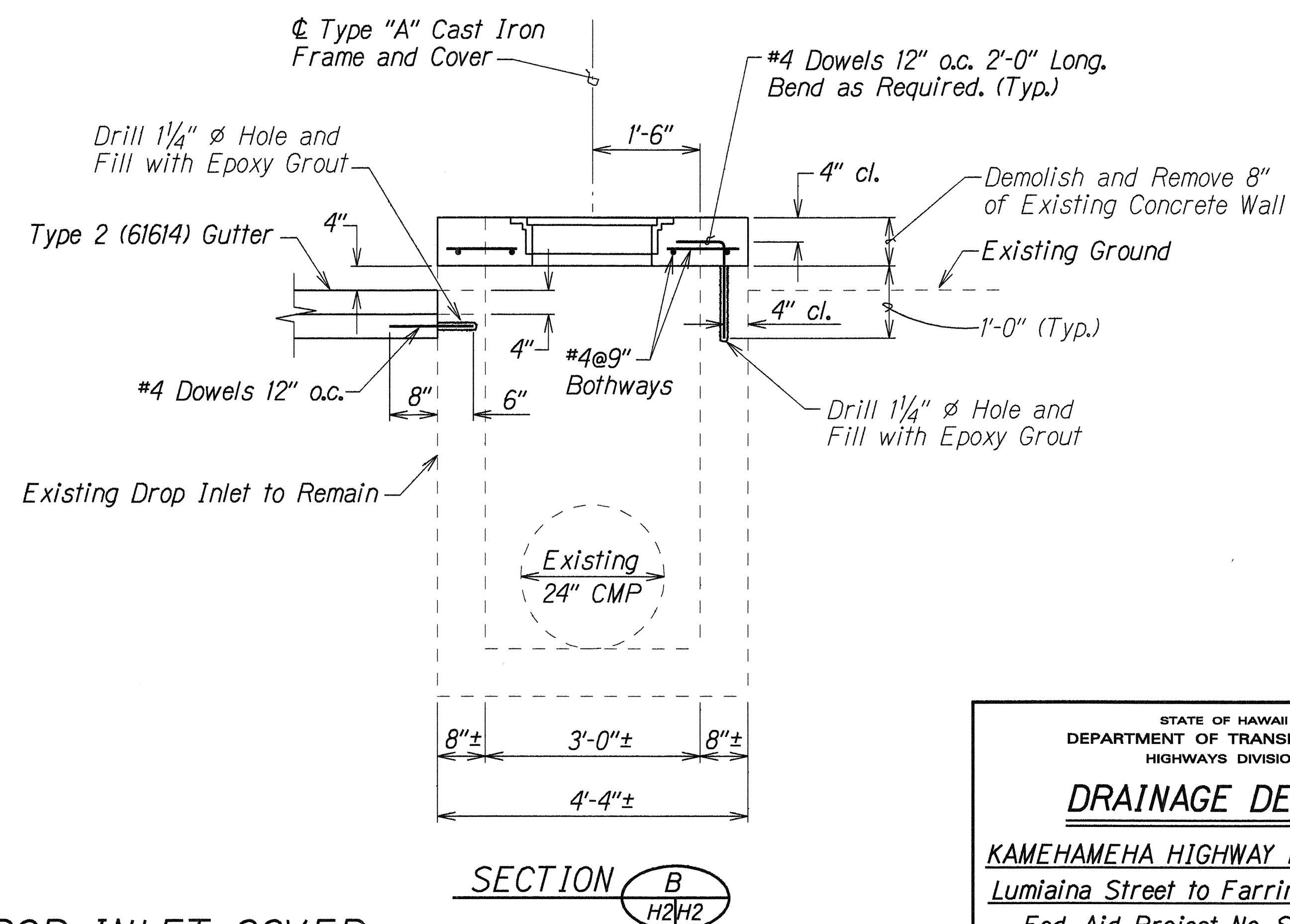
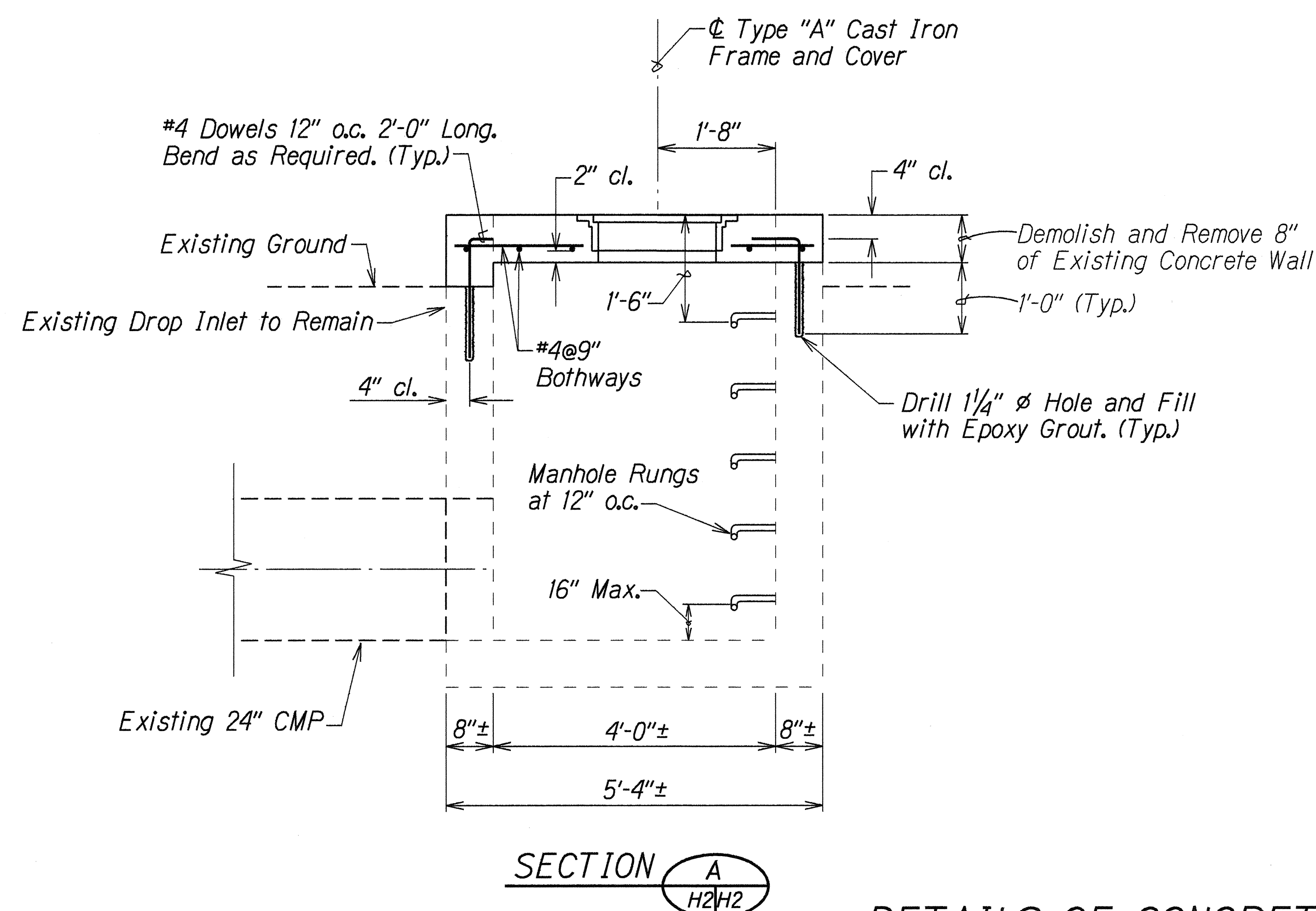
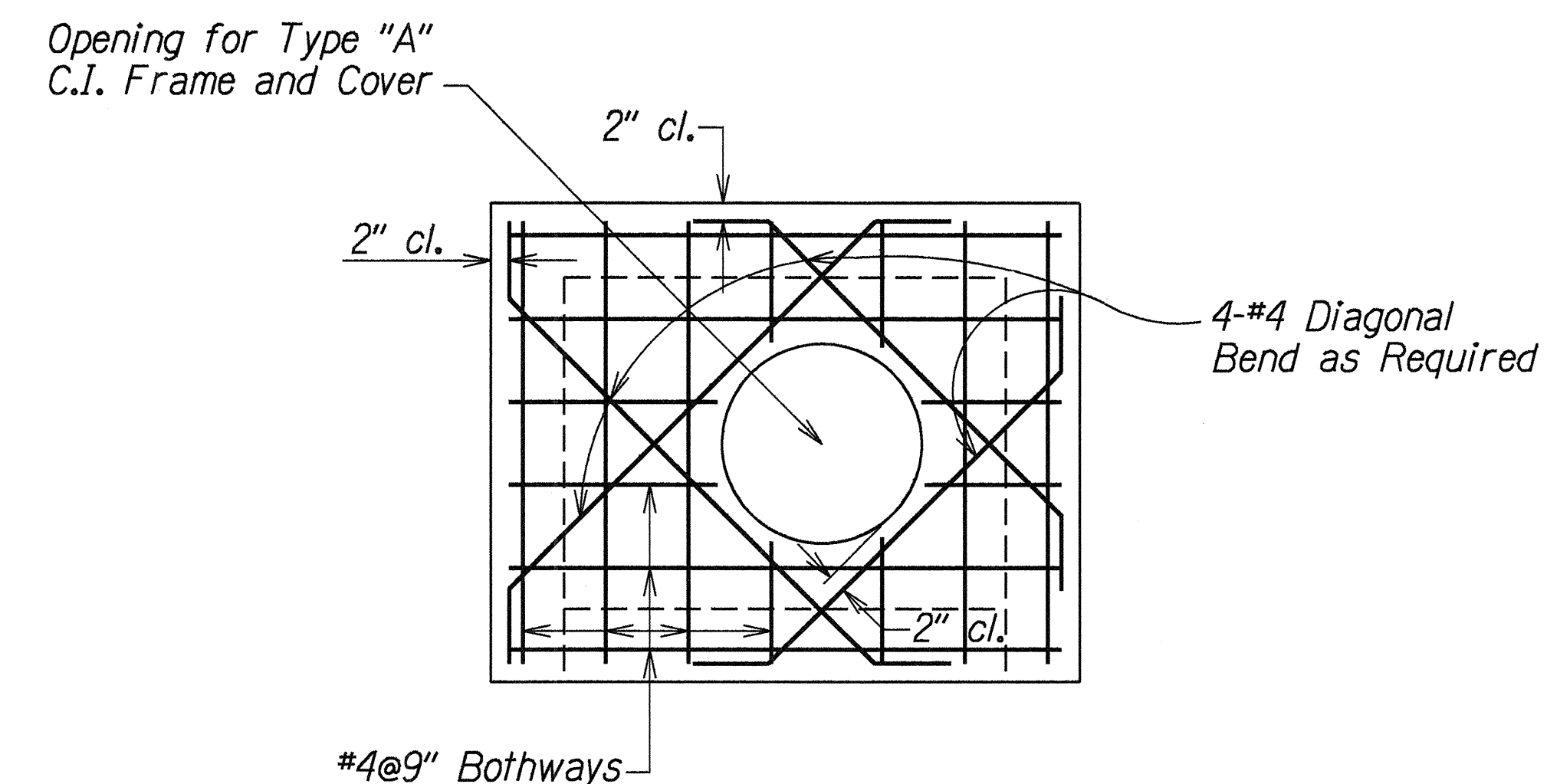
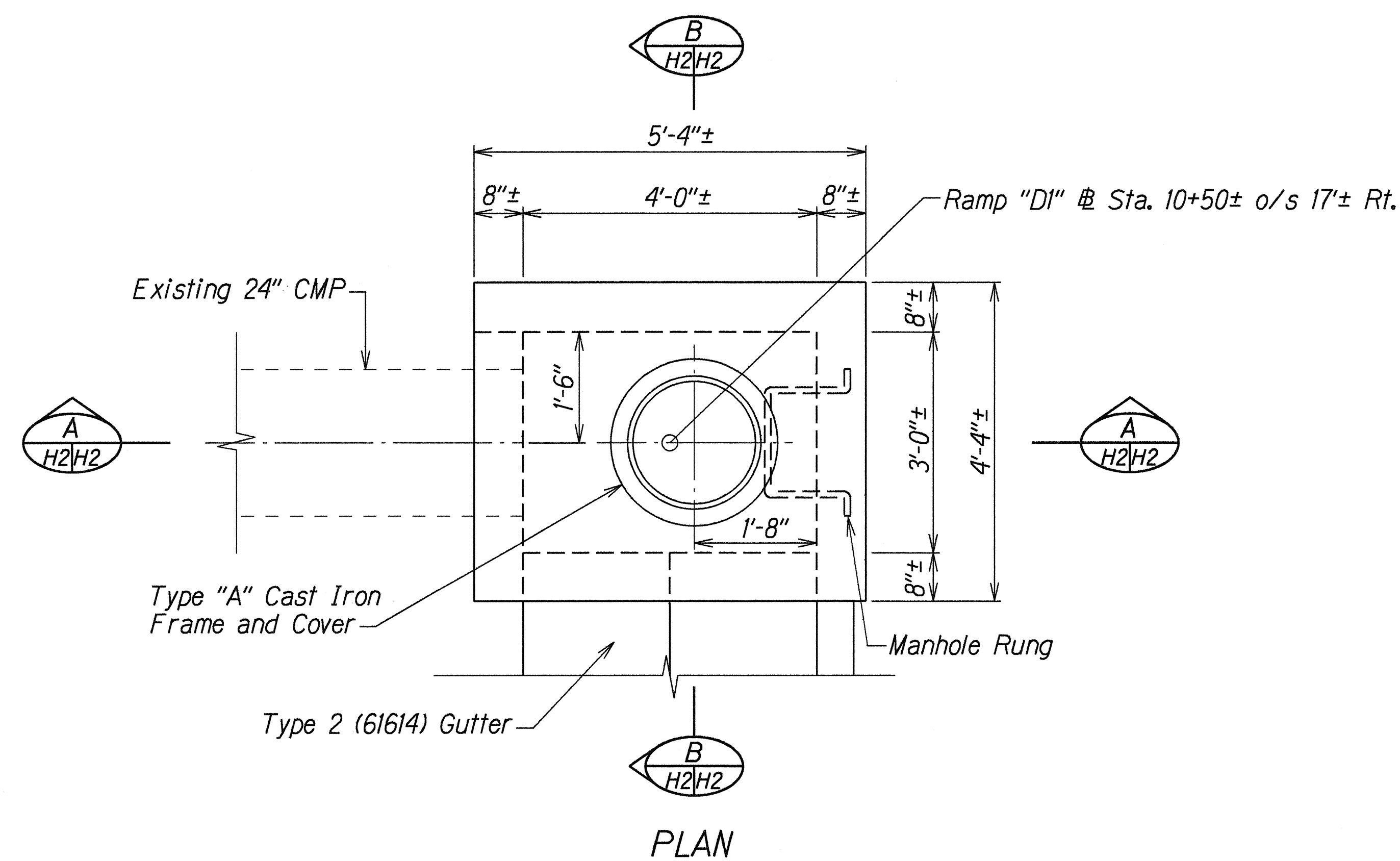
**DRAINAGE DETAILS**

KAMEHAMEHA HIGHWAY RESURFACING  
Lumiaina Street to Farrington Highway  
Fed. Aid Project No. STP-099-1(13)

Scale: As Noted      Date: Sept, 1994

SHEET No. HI OF 3 SHEETS

FED. ROAD DIST. NO.	STATE	FED. AID PROJ. NO.	FISCAL YEAR	SHEET NO.	TOTAL SHEETS
HAWAII	HAW.	STP-099-1(13)	1995	28	58



## DETAILS OF CONCRETE DROP INLET COVER

STATE OF HAWAII  
DEPARTMENT OF TRANSPORTATION  
HIGHWAYS DIVISION

**DRAINAGE DETAILS**

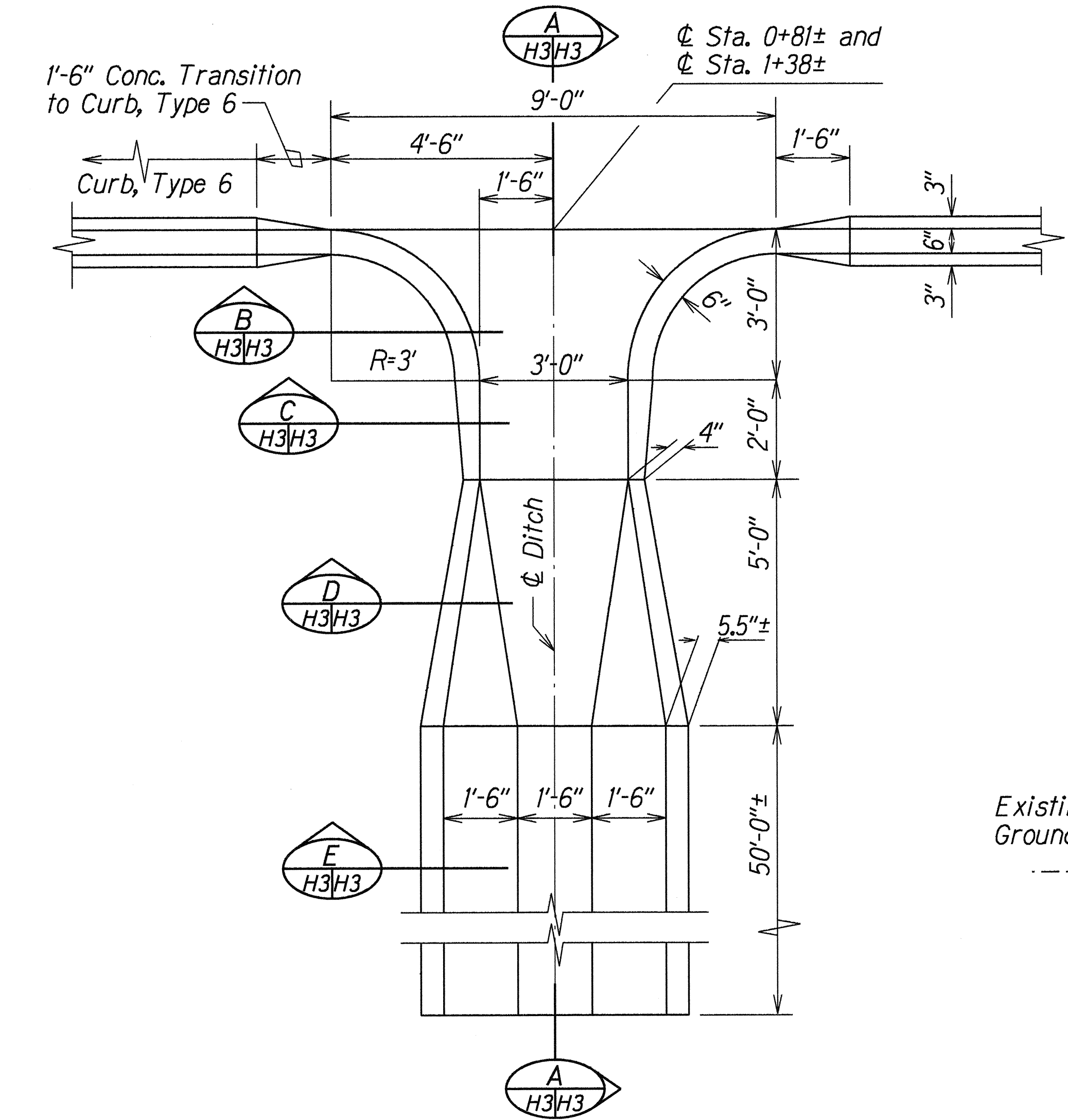
KAMEHAMEHA HIGHWAY RESURFACING  
Lumaina Street to Farrington Highway  
Fed. Aid Project No. STP-099-1(13)

Scale: 3/4"=1'-0" Date: Sept. 1994

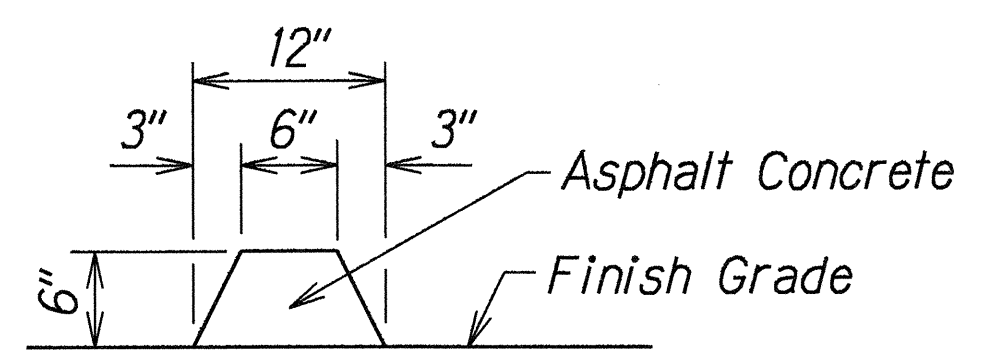
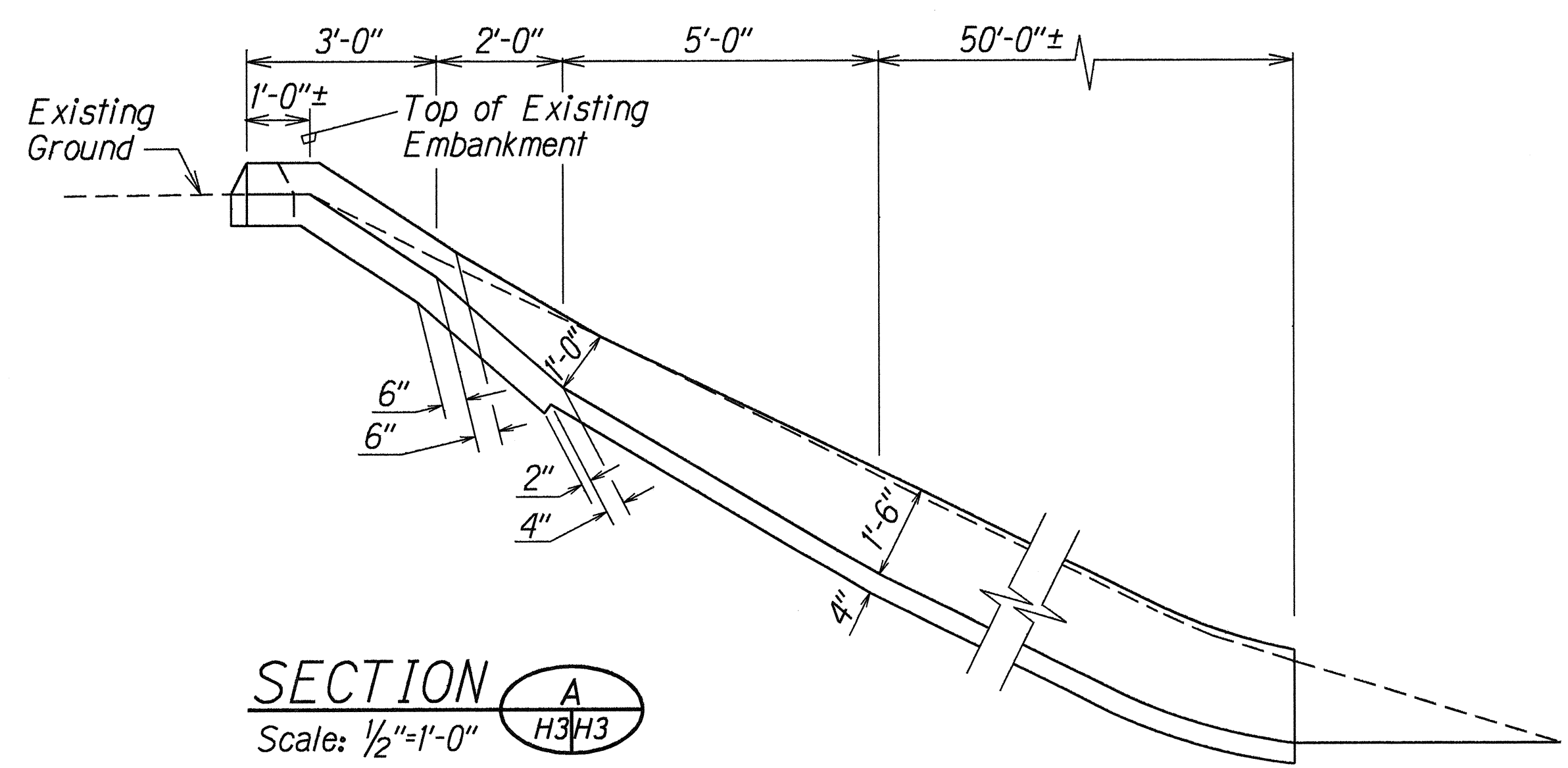
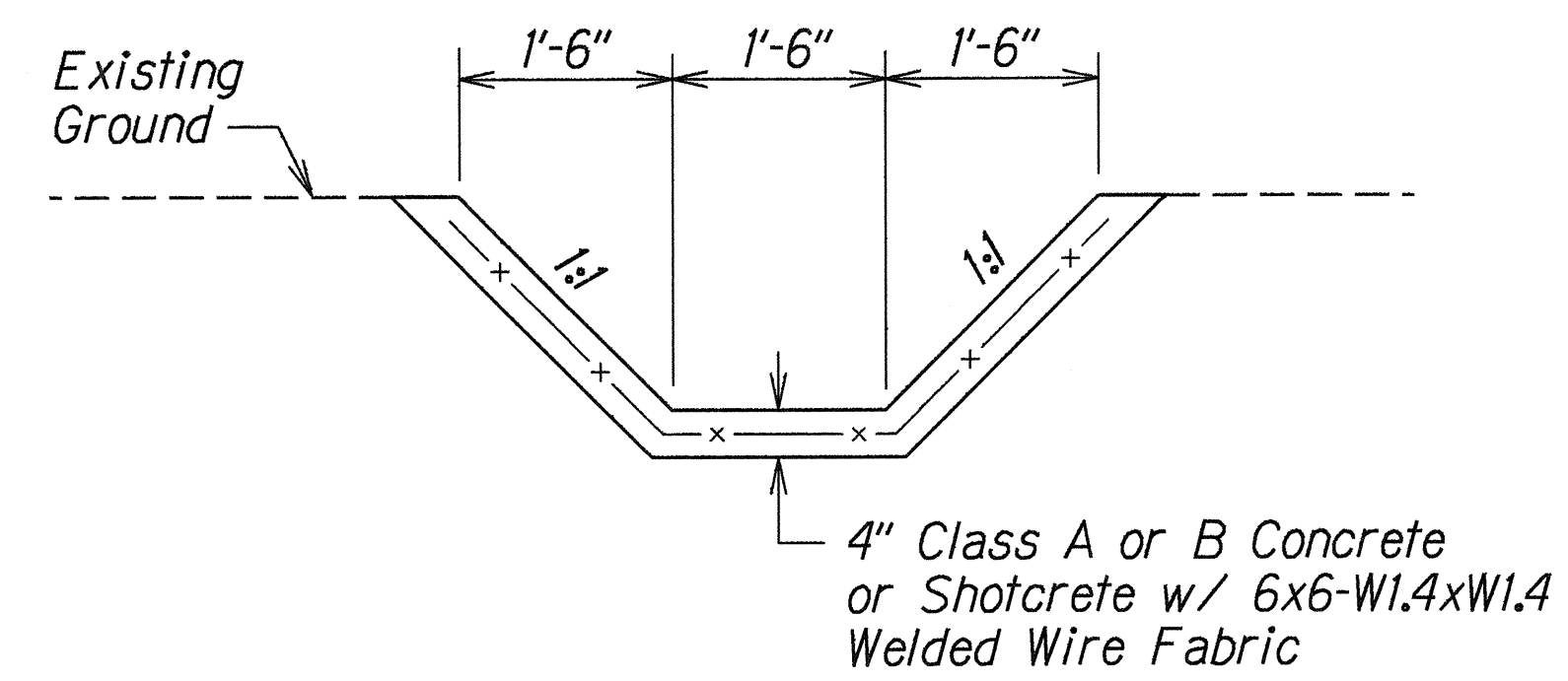
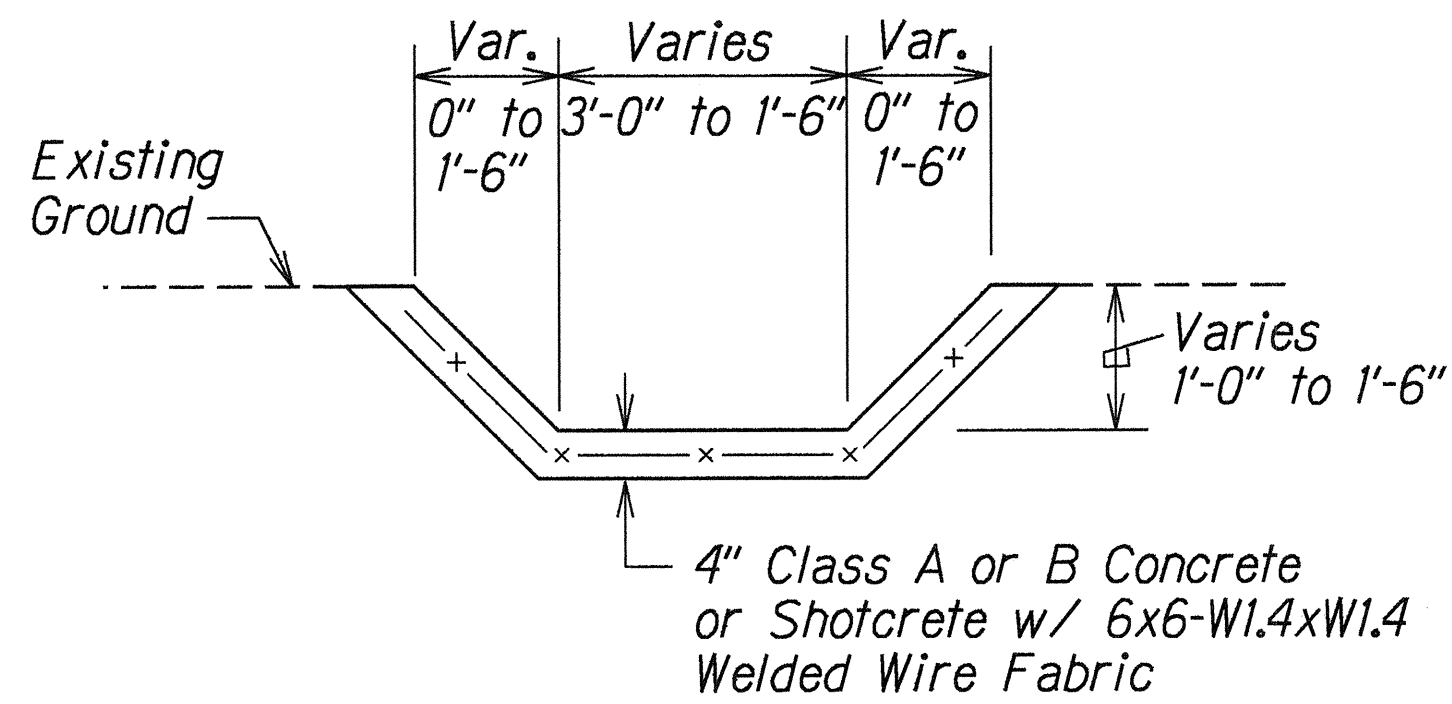
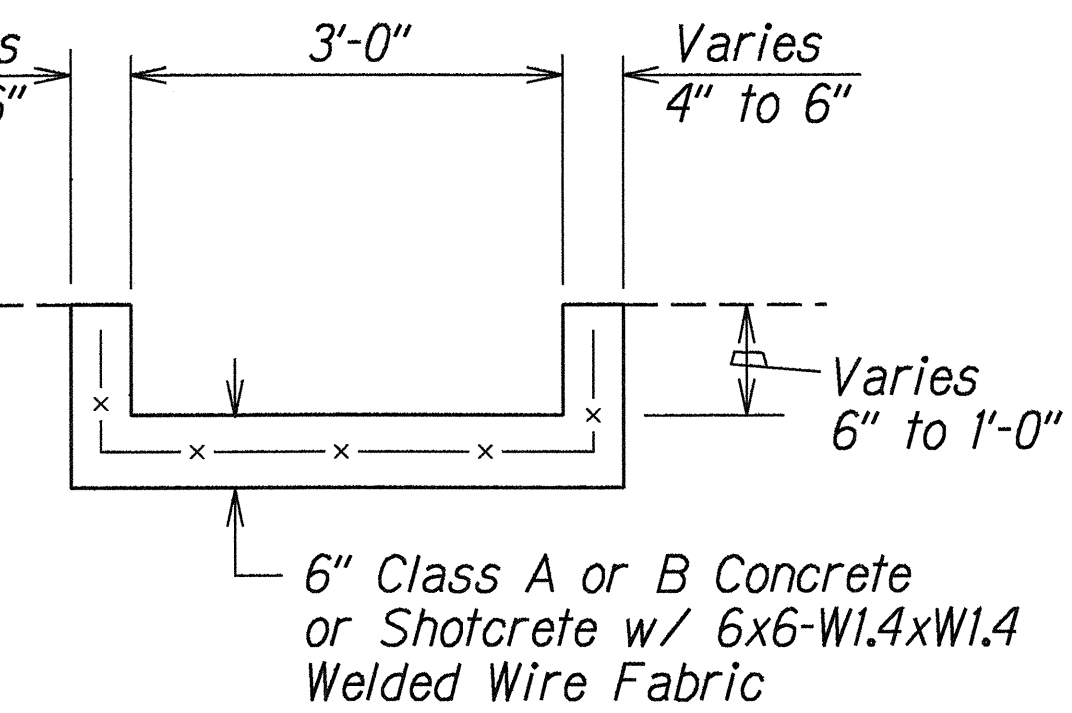
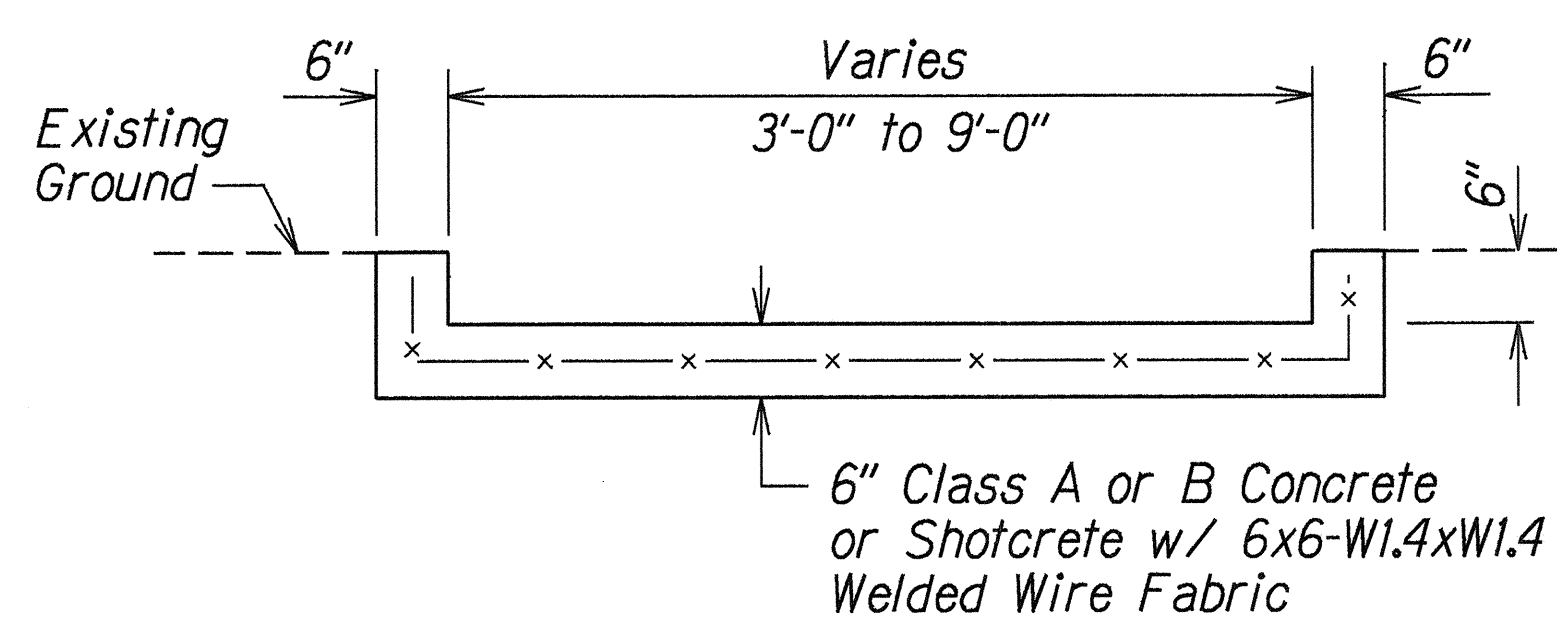
SHEET No. H2 OF 3 SHEETS



FED. ROAD DIST. NO.	STATE	FED. AID PROJ. NO.	FISCAL YEAR	SHEET NO.	TOTAL SHEETS
HAWAII	HAW.	STP-099-1(13)	1995	29	58



PLAN  
Scale: 1/2"=1'-0"



TYPICAL DETAILS OF LINED TRAPEZOIDAL DRAINAGE DITCH

STATE OF HAWAII  
DEPARTMENT OF TRANSPORTATION  
HIGHWAYS DIVISION

DRAINAGE DETAILS  
KAMEHAMEHA HIGHWAY RESURFACING  
Lumiaina Street to Farrington Highway  
Fed. Aid Project No. STP-099-1(13)  
Scale: As Shown Date: Sept. 1994  
SHEET No. H3 OF 3 SHEETS

ORIGINAL PLAN  
SURVEY PLOTTED BY  
DRAWN BY A. Nomura  
DESIGNED BY C. Matsuda  
CHECKED BY  
DATE 9/94