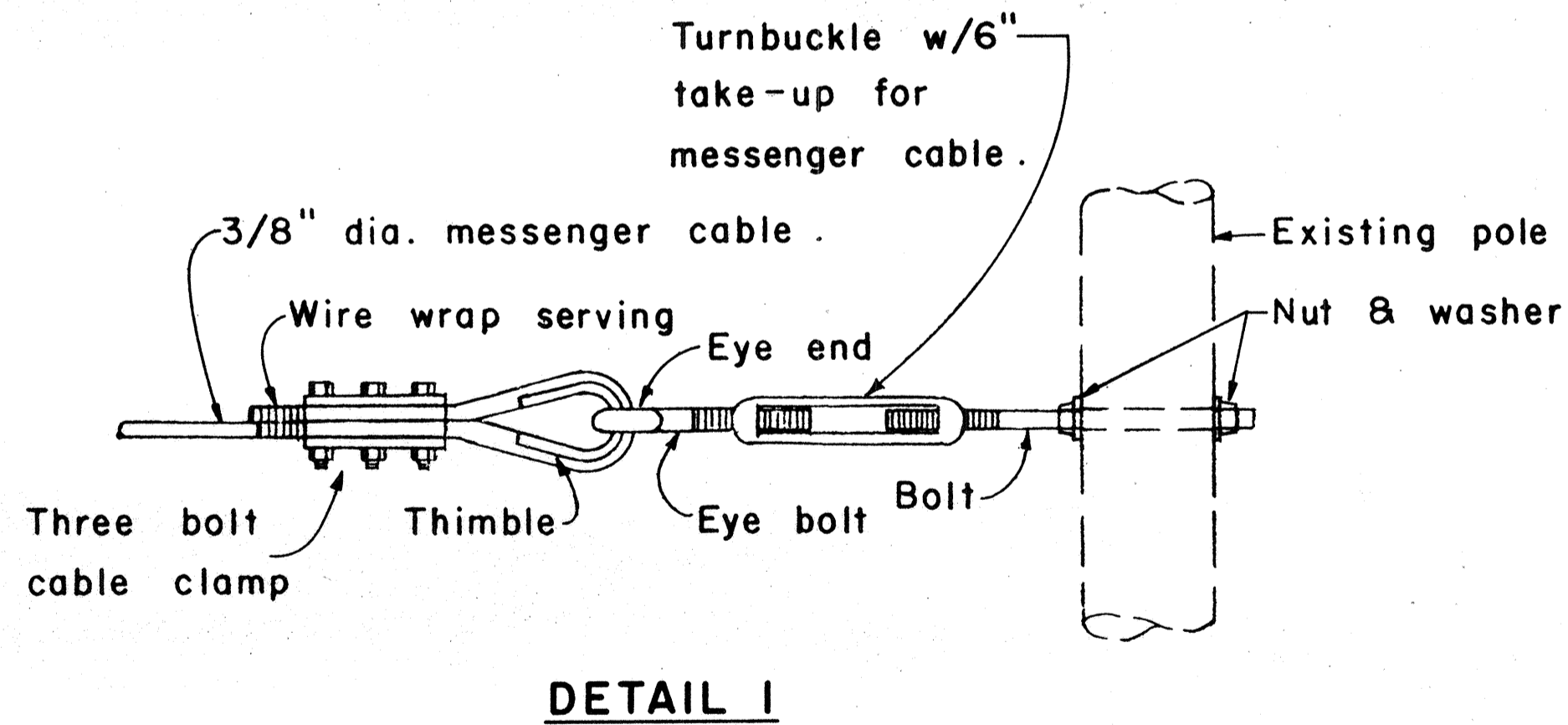
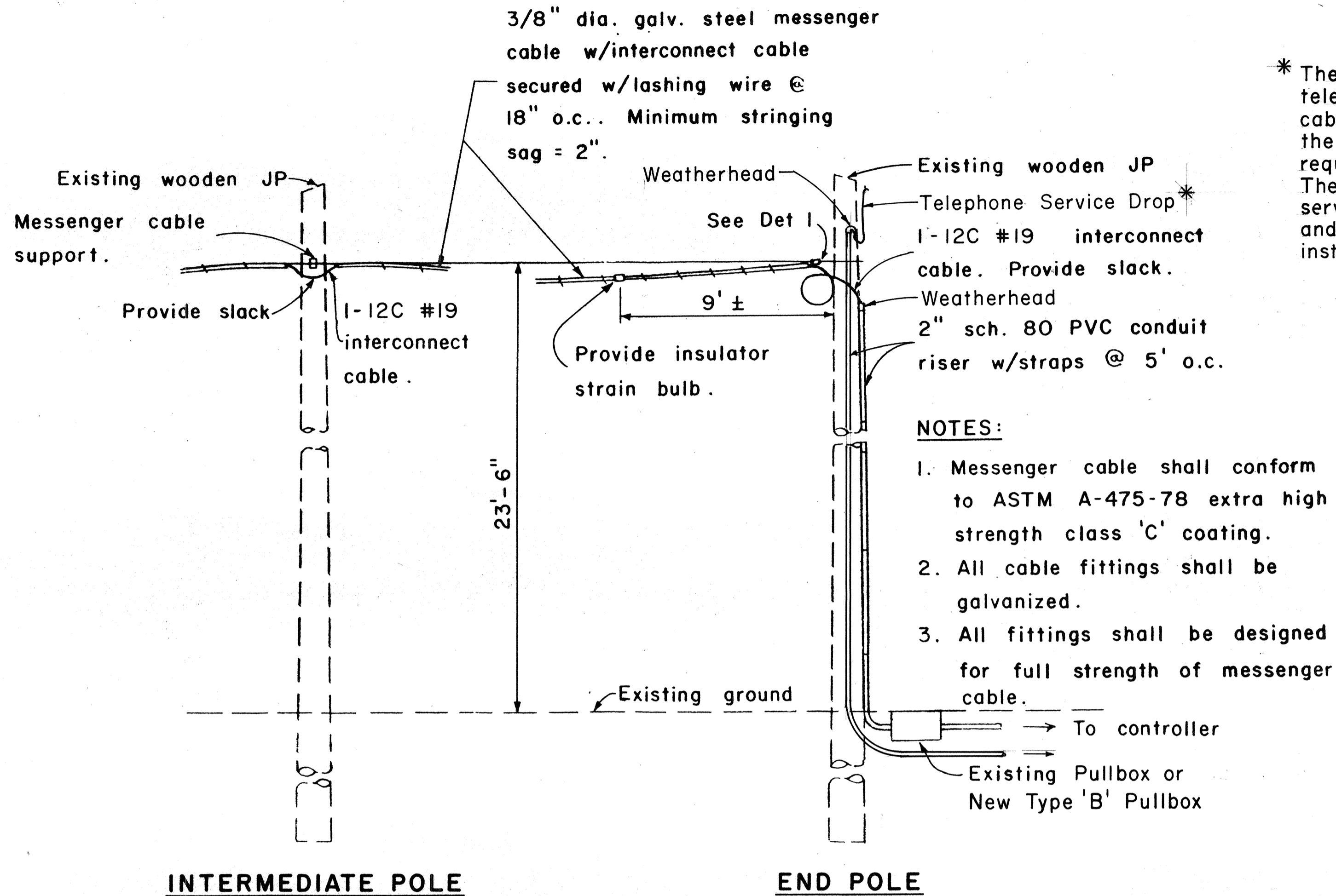


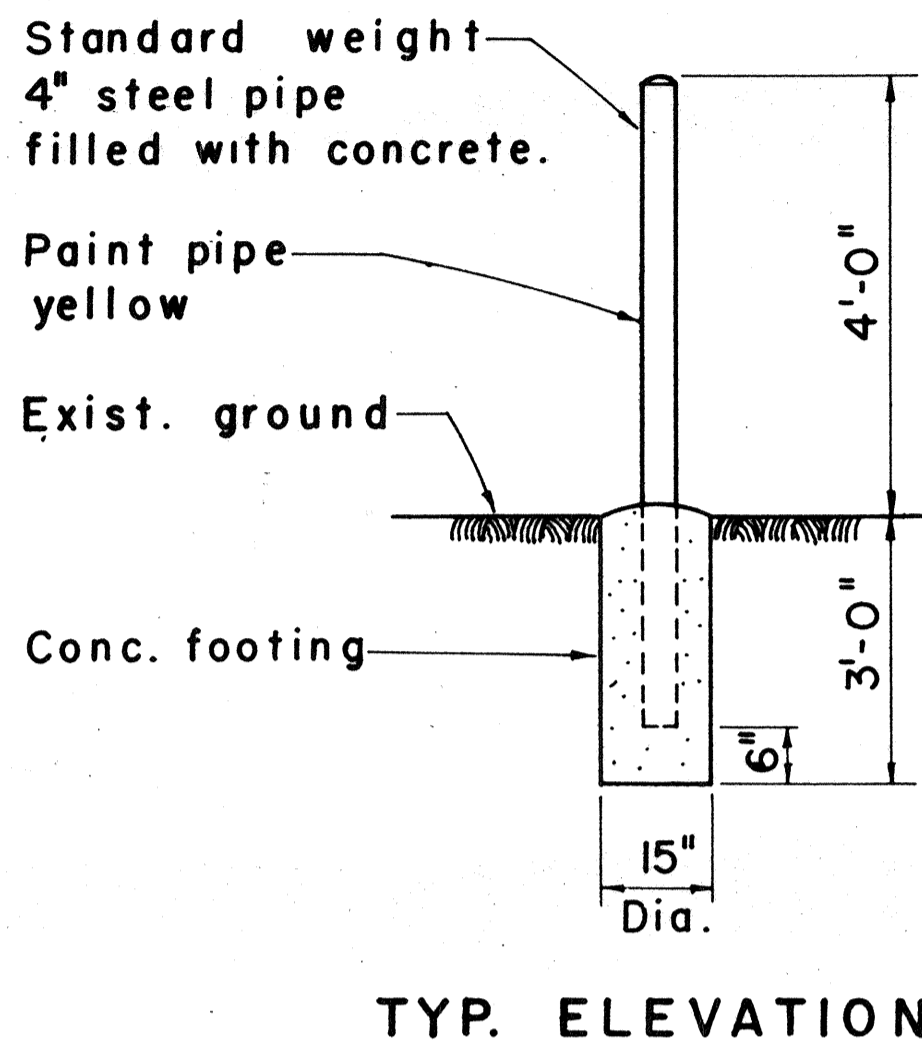
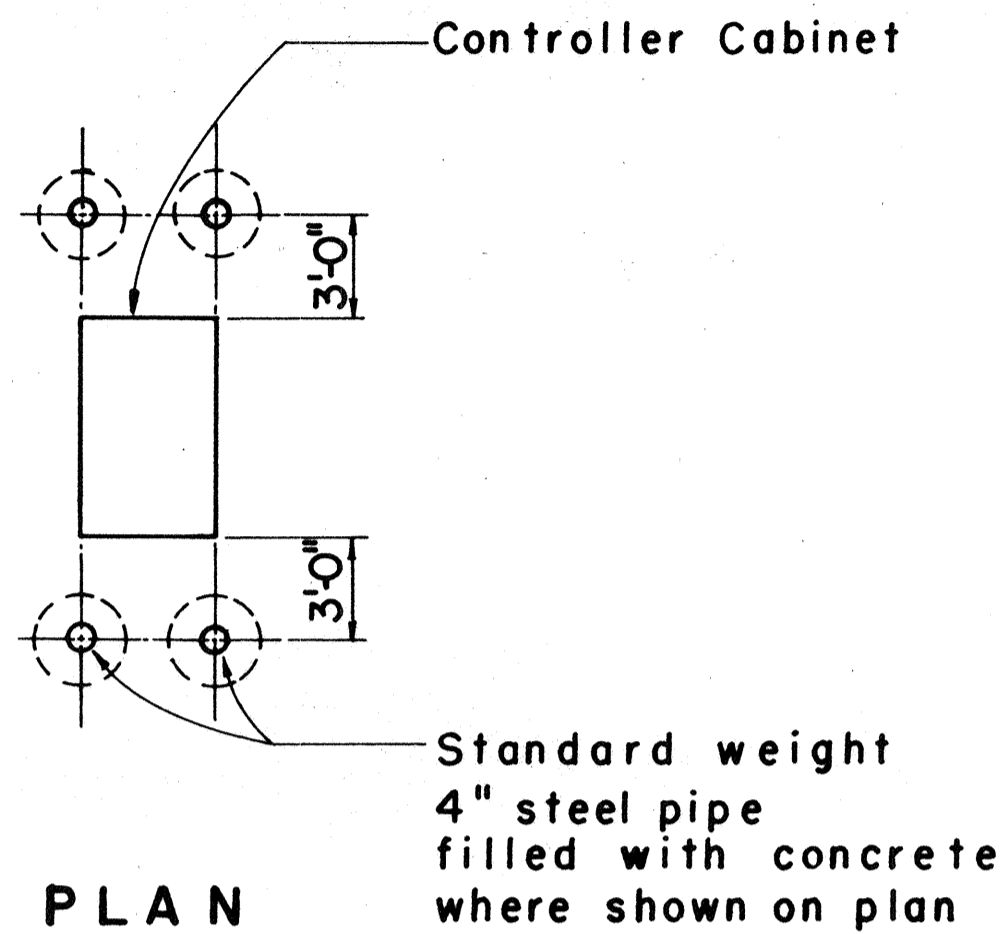
FED. ROAD DIST. NO.	STATE	PROJ. NO.	FISCAL YEAR	SHEET NO.	TOTAL SHEETS
HAWAII	HAW.	99D-02-87	1990	4	15



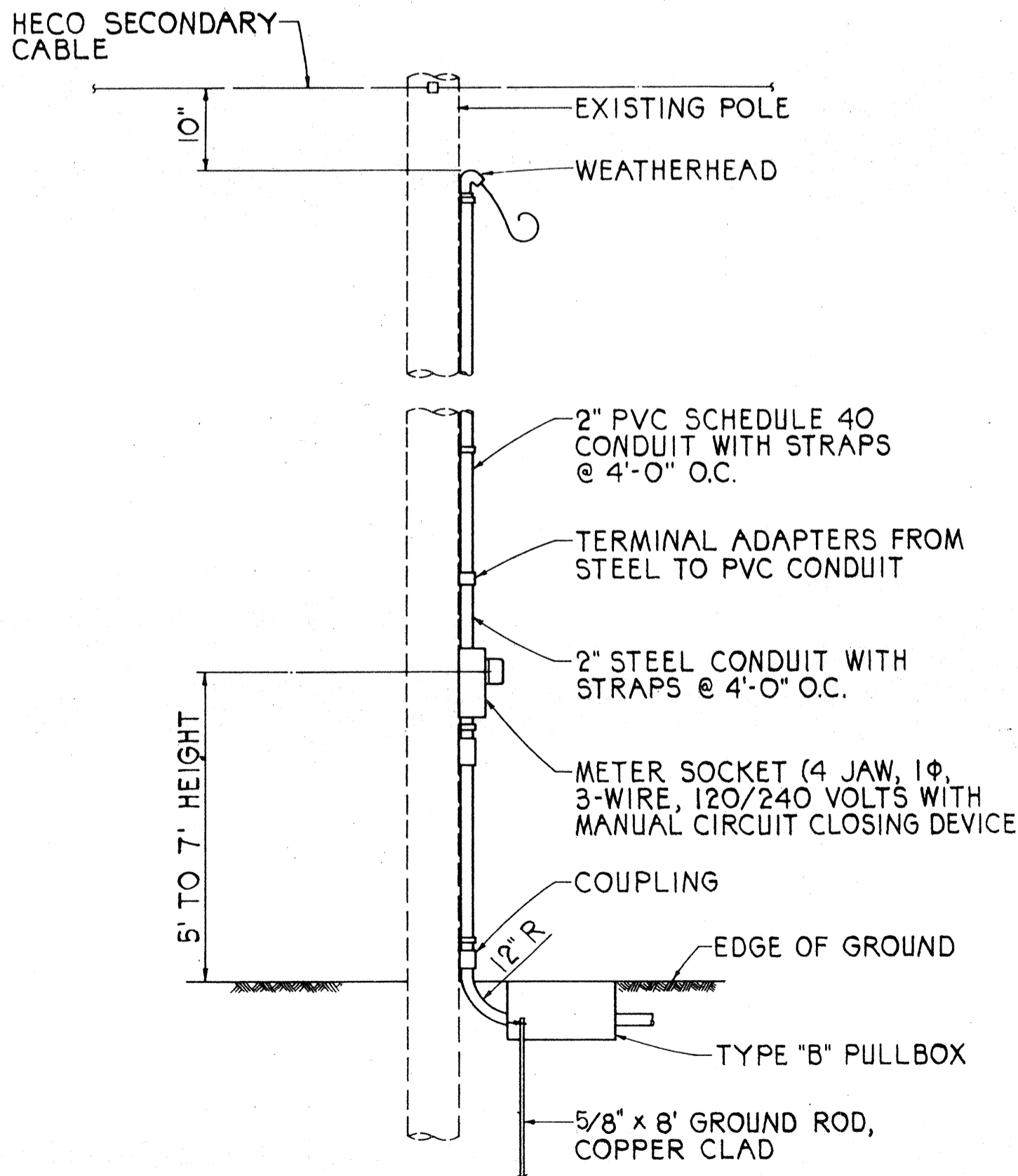
TYPICAL OVERHEAD INSTALLATION
NOT TO SCALE

* The Contractor shall arrange for telephone service to the controller cabinet at the locations shown on the plans and in accordance with the requirements of GTE Hawaiian Telephone. The contract price paid for telephone service shall include costs for furnishing and installing 2" conduits, riser and any installation charges by GTE Hawaiian Tel.

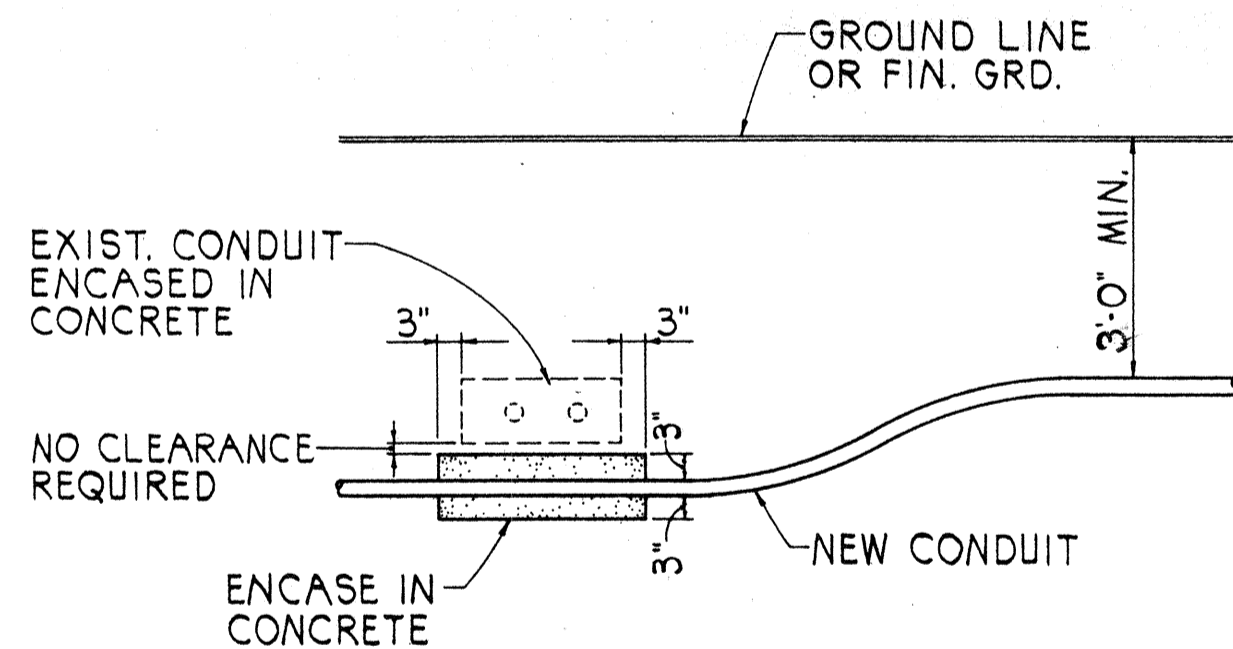
NOTE:
Cost of concrete filled galvanized posts shall be incidental to other items of work.



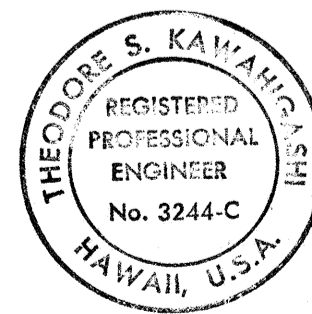
PIPE GUARD DETAIL
NOT TO SCALE



SERVICE POLE DETAIL
NOT TO SCALE



CONDUIT BY-PASS DETAIL
NOT TO SCALE



THIS WORK WAS PREPARED BY ME OR UNDER MY SUPERVISION
Theodore S. Kawahiga
Signature

STATE OF HAWAII
DEPARTMENT OF TRANSPORTATION
HIGHWAYS DIVISION

MISCELLANEOUS DETAILS
KAMEHAMEHA HWY. INTERCONNECTION
OF TRAFFIC SIGNAL SYSTEM
FROM AIEA TO PEARL CITY
PROJECT NO. 99D-02-87
SCALE: AS SHOWN DATE: APR. 16, 1990
SHEET NO. 1 OF 1 SHEETS

SURVEY PLOTTED BY	DATE
DRAWN BY	
DESIGNED BY	
QUANTITIES BY	
CHECKED BY	
NO.	