

FED. ROAD DIST. NO.	STATE	PROJ. NO.	FISCAL YEAR	SHEET NO.	TOTAL SHEETS
HAWAII	HAW.	09C-01-84M	1984	6	9



CW 20-1a 48" x 48"



CW 20-2d 48" x 48"



CW 20-3b 48" x 48"



CW 20-4d 48" x 48"



CW 20-5d(L) 48" x 48"



CW 20-7c 48" x 48"



CW 21-1 30" x 30"



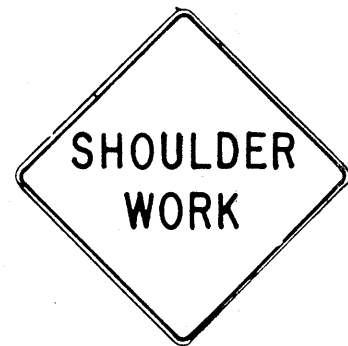
CW 21-2 30" x 30"



CW 21-3 36" x 36"



CW 21-4 36" x 36"



CW 21-5 30" x 30"



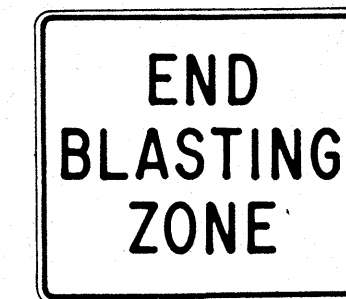
CW 21-6 30" x 30"



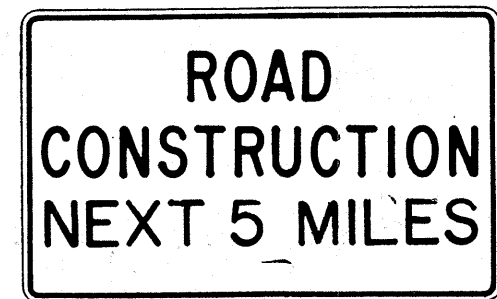
CW 22-1b 48" x 48"



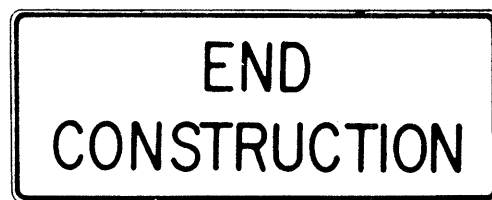
CW 22-2 42" x 36"



CW 22-3 42" x 36"



CG 20-1(5) 60" x 36"



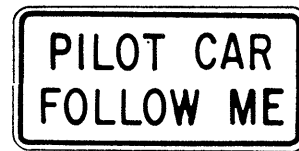
CG 20-2 60" x 24"



CM 4-9(R) 30" x 24"



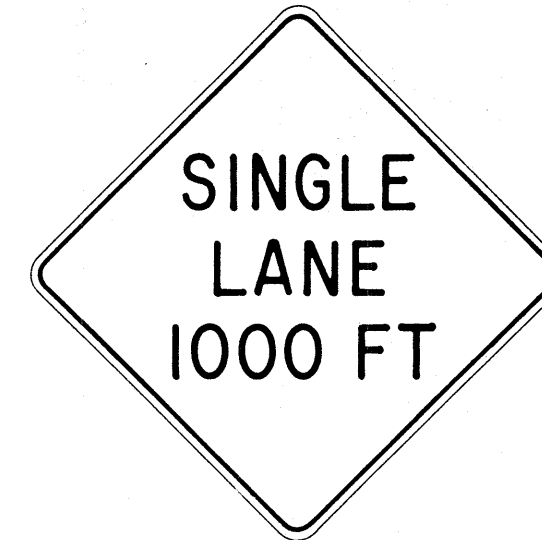
CM 4-10(R) 48" x 18"



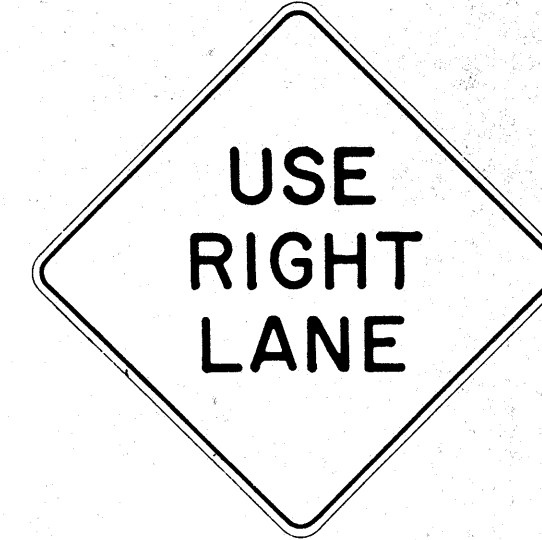
CG 20-4 36" x 18"



CW 23-1 36" x 36"



CW 23-2b 48" x 48"



CW 23-3(R) 48" x 48"

#### GENERAL NOTES

- Sign details shall conform to the FHWA publications "Manual on Uniform Traffic Control Devices for Streets and Highways," 1971, and "Standard Highway Signs," 1972, and as amended.
- All construction signs shall be reflectorized.
- All construction signs shall have  $\frac{3}{8}$ " bolt holes drilled at appropriate locations.
- Numerals in ( ) indicates numerals to be inserted for sign message. (R) or (L) indicates right or left.
- For "CW" series signs, suffixes a,b,c and d are as follows:  
a-1500 FT, b-1000 FT, c-500 FT and d-AHEAD.

NO.	REVISION	APPROVED BY	DATE
1	Supersedes Sht. DT 104 Approved 12-30-69	H.C.	3/25/72
2	Revised General Note 1	H.C.	10/16/74
3	Revised General Note 2	H.C.	11/1/75
4	Revised General Note 2 and sign CG 20-1(5)	H.C.	9-14-76

APPROVAL RECOMMENDED:  
Erich Tanaka 3/21/72  
TRAFFIC ENGINEER DATE

APPROVED:  
Walter Salsich 2/27/72  
ASSISTANT CHIEF, ENGINEERING DATE

STATE OF HAWAII  
DEPARTMENT OF TRANSPORTATION  
HIGHWAYS DIVISION

#### STANDARD DETAILS CONSTRUCTION SIGNS

NOT TO SCALE

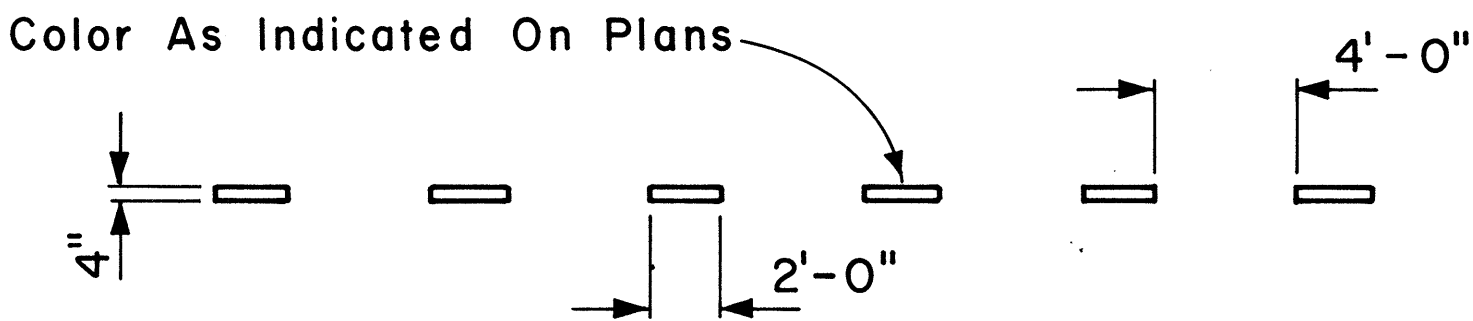
SHEET No. 7 OF 4 SHEETS DT 104

ORIGINAL	DESIGNED BY	DATE
FILED	DESIGNED BY	
NOTE BOOK	QUANTITIES BY	
NO.	CHECKED BY	

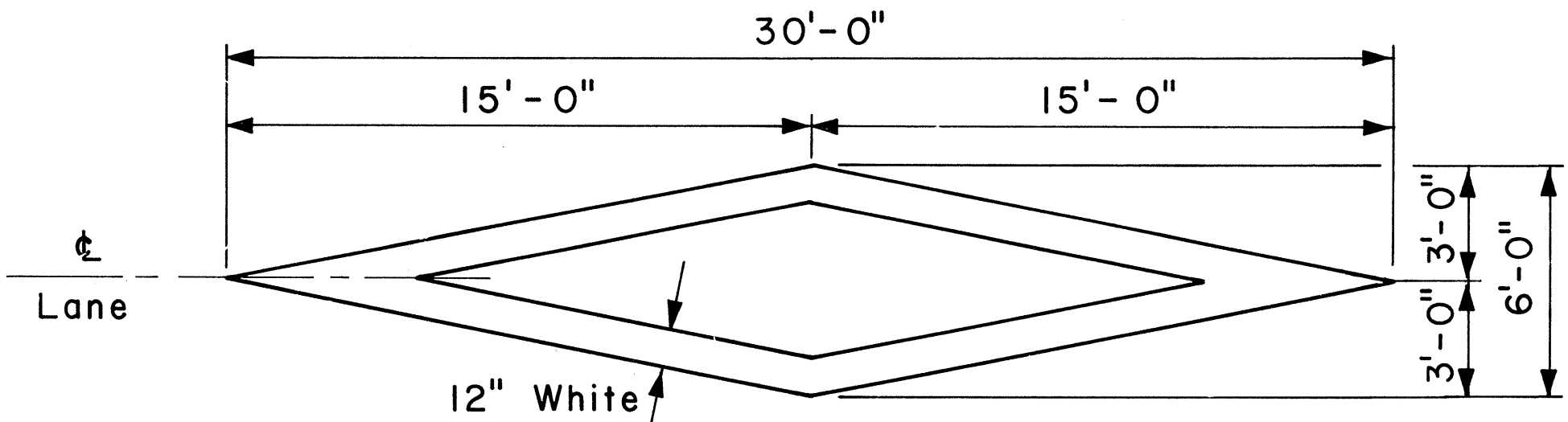
FED. ROAD DIST. NO.	STATE	PROJ. NO.	FISCAL YEAR	SHEET NO.	TOTAL SHEETS
HAWAII	HAW.	99C-01-84M	1984	7	2

GENERAL NOTES:

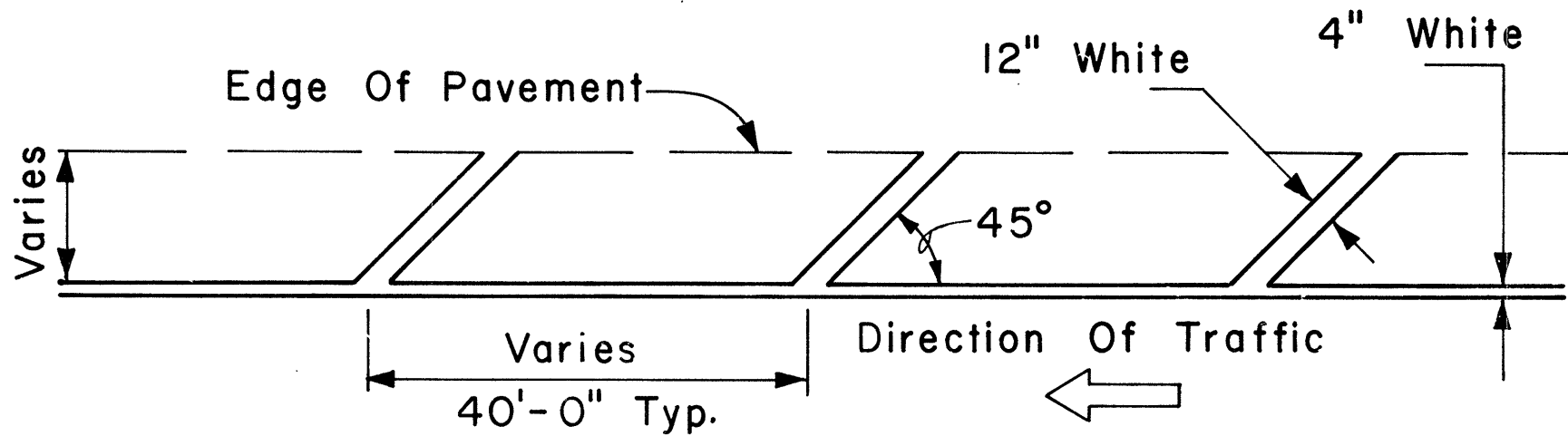
1. Pavement marking and striping shall conform to the latest edition of the "Manual on Uniform Traffic Control Devices for Streets and Highways," by the FHWA, and as amended.
2. Layout of pavement markings and striping shall be done by the Contractor. The Contractor shall check layout of markings and striping with the Engineer prior to performing work.
3. For additional pavement marking details, see sheet DT 300.



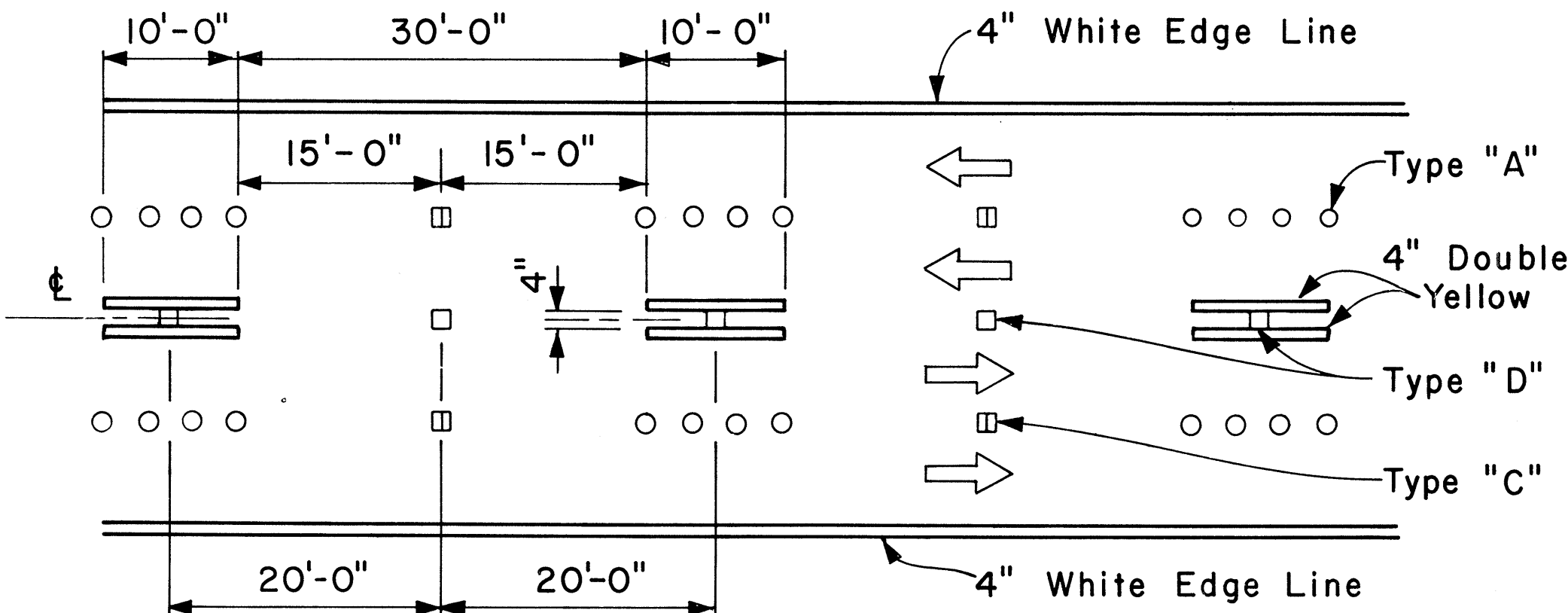
4" GUIDE LINE



PAVEMENT DIAMOND

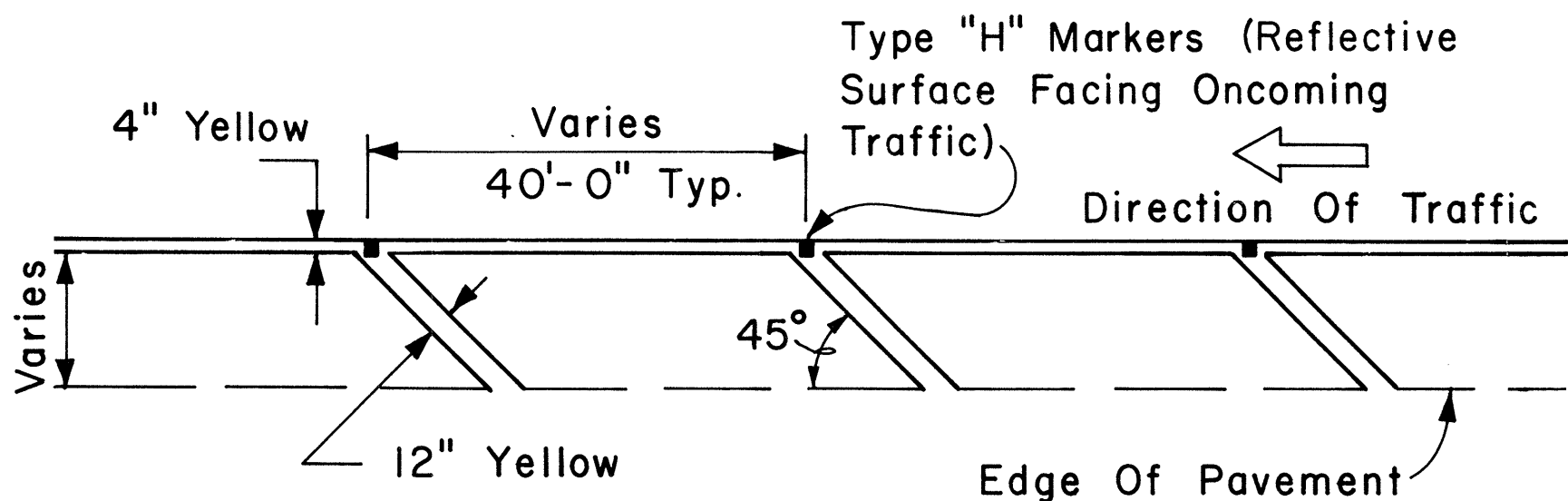


TRANSVERSE RIGHT SHOULDER MARKING

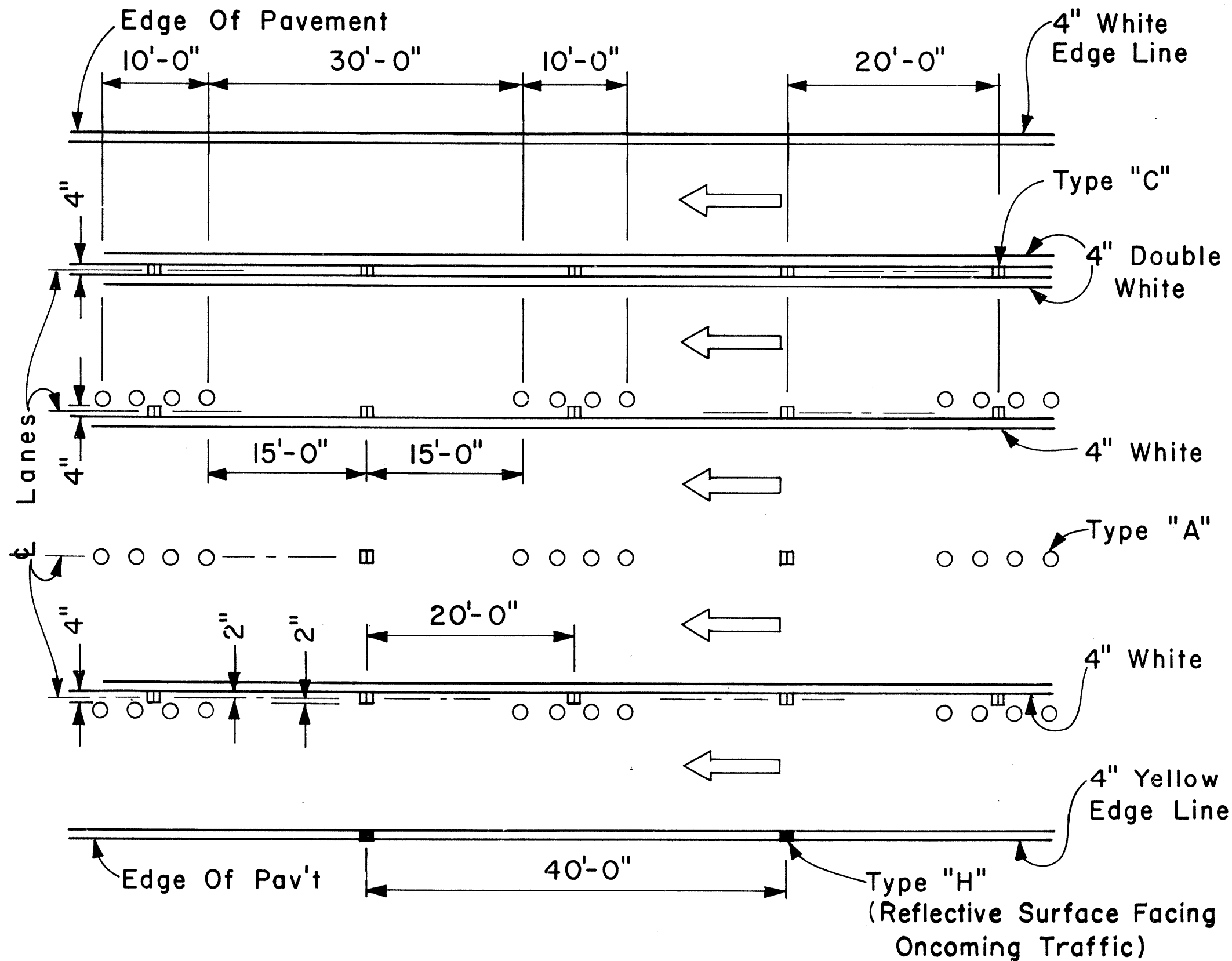


NOTE: Traffic Cone Usage Required.

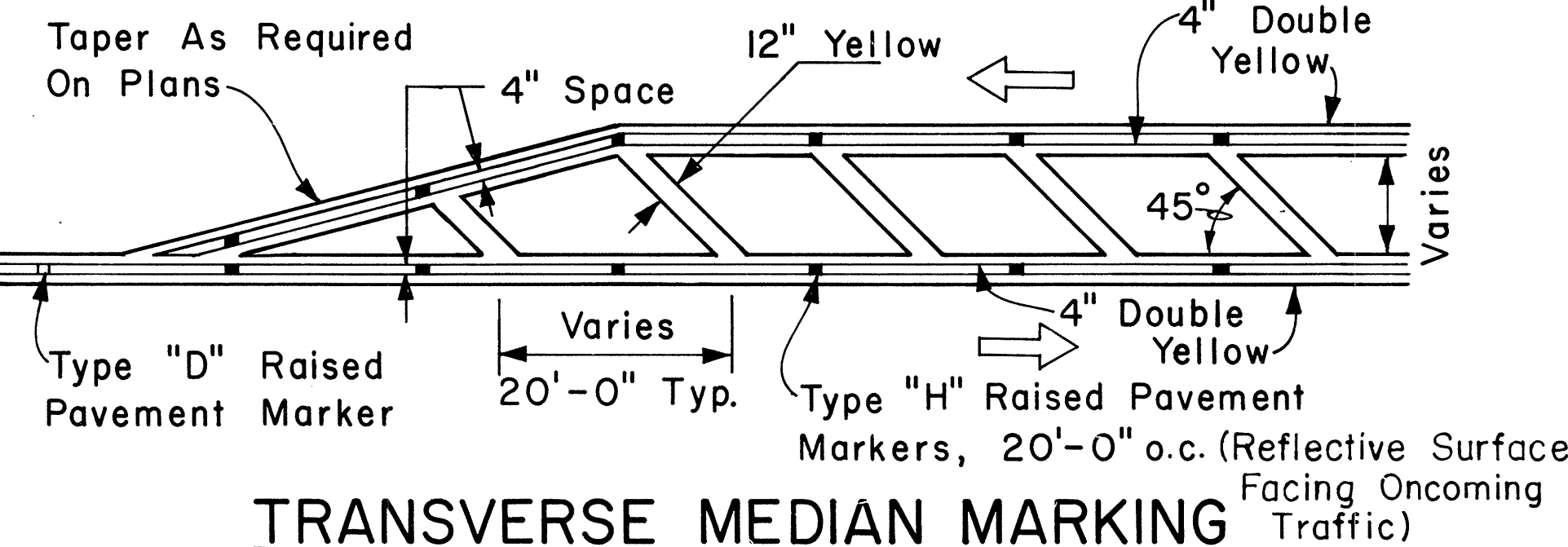
MULTI-LANE REVERSIBLE LANES



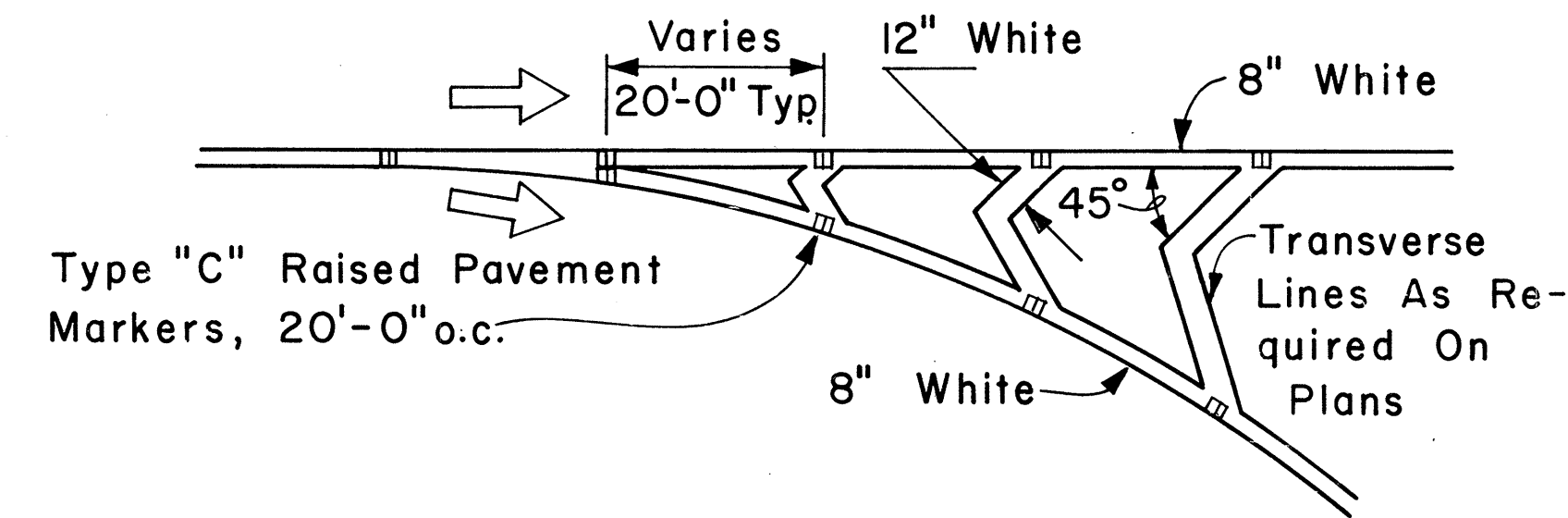
TRANSVERSE LEFT SHOULDER MARKING



MULTI-LANE LANE CHANGE RESTRICTION ZONES



TRANSVERSE MEDIAN MARKING



CHANNELIZING ISLAND

APPROVAL RECOMMENDED: *E. L. Tanaka* 5/2/78  
TRAFFIC ENGINEER DATE

APPROVED: *Herbert Z. Zafrahu* 5/3/78  
ASSISTANT CHIEF, ENGINEERING DATE

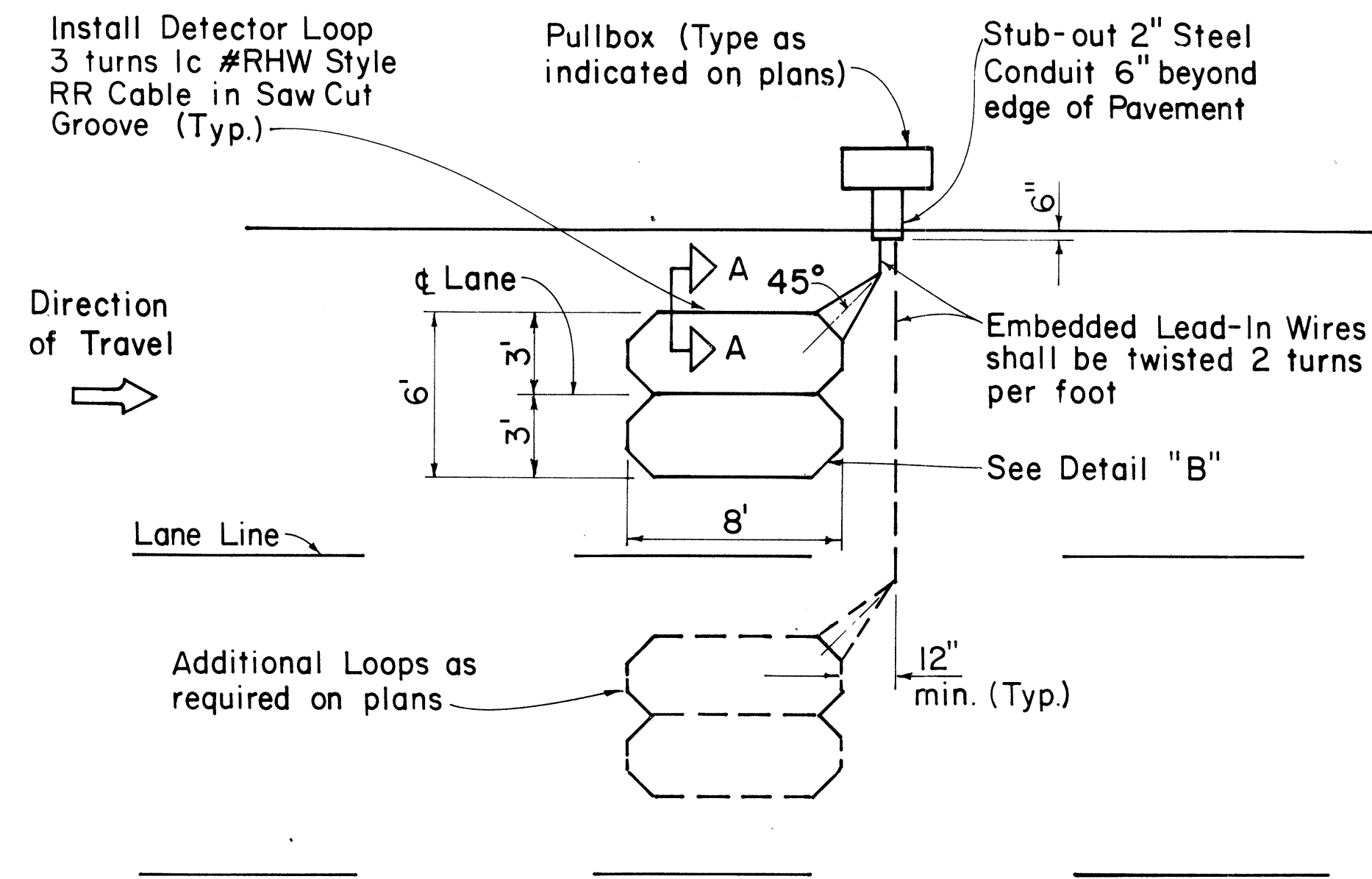
STATE OF HAWAII  
DEPARTMENT OF TRANSPORTATION  
LAND TRANSPORTATION FACILITIES DIVISION  
**STANDARD DETAILS**  
MISCELLANEOUS  
PAVEMENT MARKINGS  
Scale: Not to Scale Date: April, 1978  
SHEET NO. 2 OF 4 SHEETS DT 302

SURVEY PLOTTED BY	DATE
DRAWN BY	
DESIGNED BY	
CHECKED BY	
ORIGINAL PLAN	
NOTE BOOK	
No.	

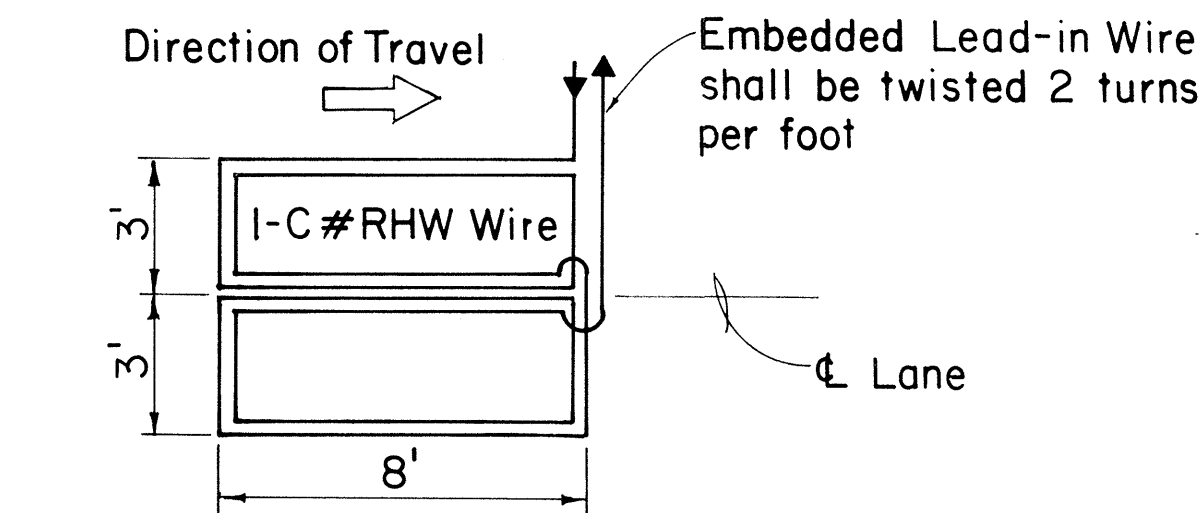




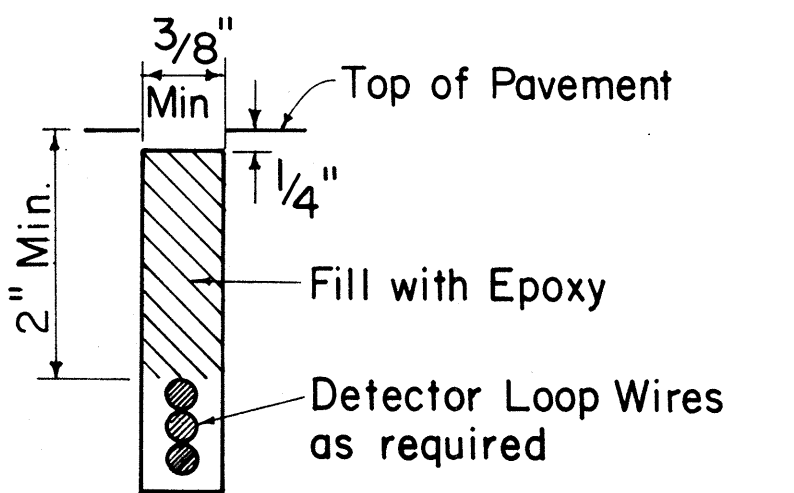
FED. ROAD DIST. NO.	STATE	PROJ. NO.	FISCAL YEAR	SHEET NO.	TOTAL SHEETS
HAWAII	HAW.	00C-01-84M	1984	2	2



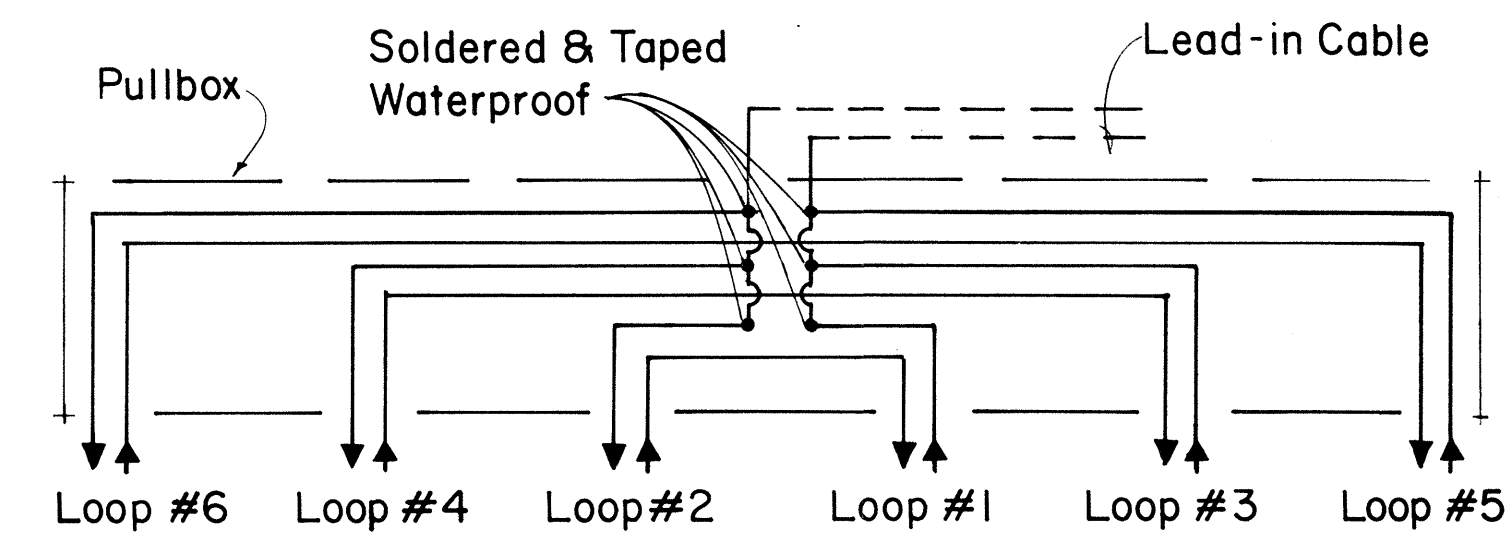
**SINGLE LOOP LAYOUT**



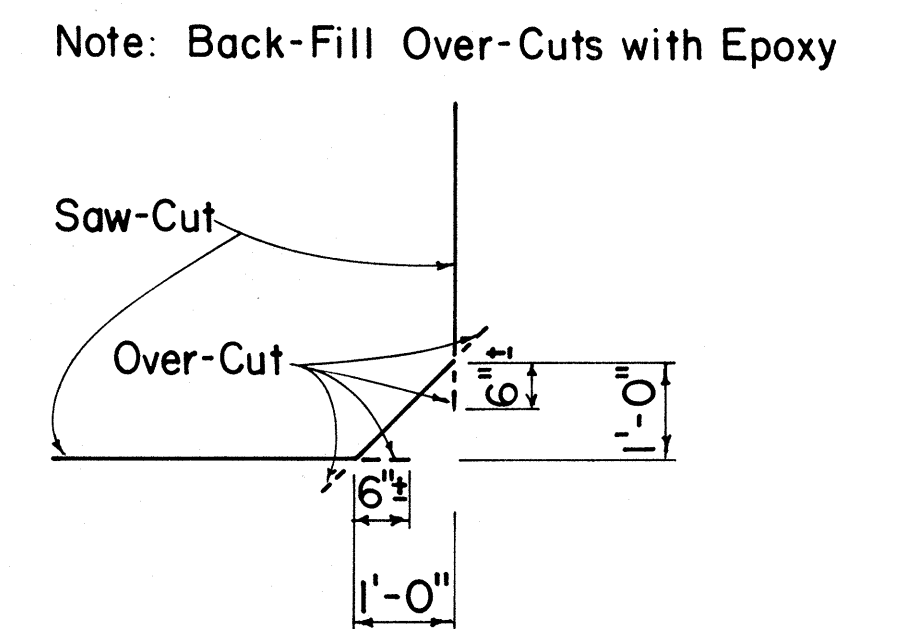
**WIRING DIAGRAM**



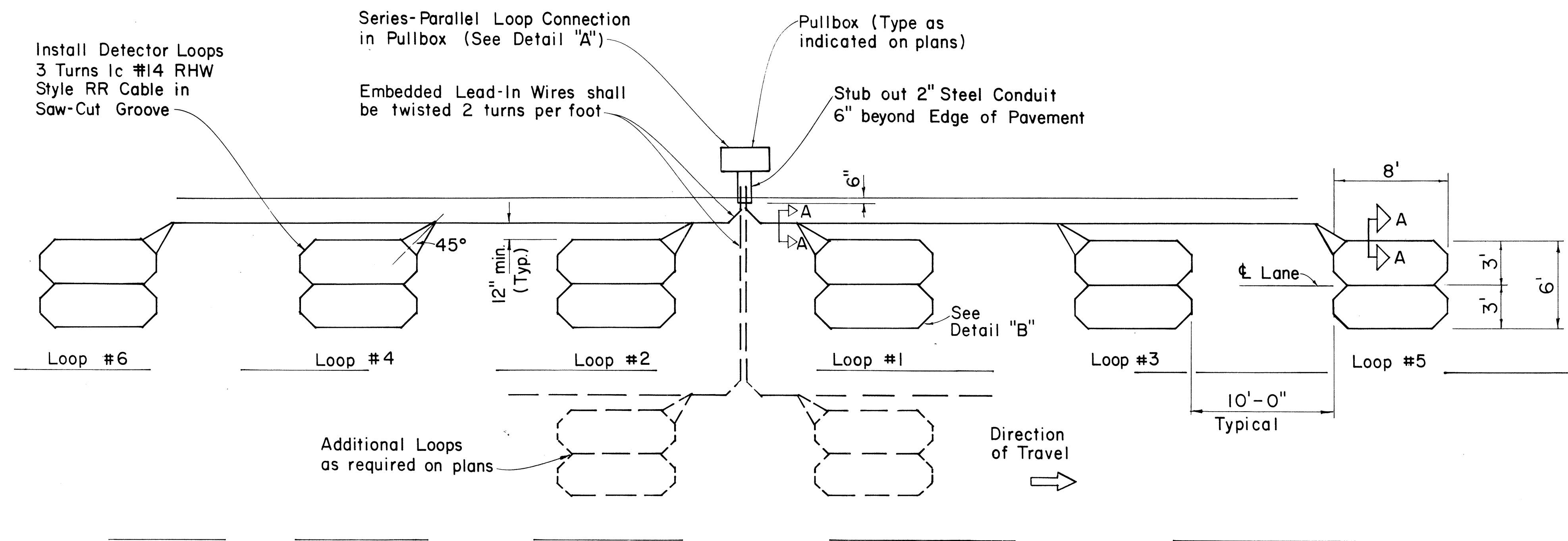
**DETECTOR LOOP SAW-CUT SECTION A-A (TYPICAL)**



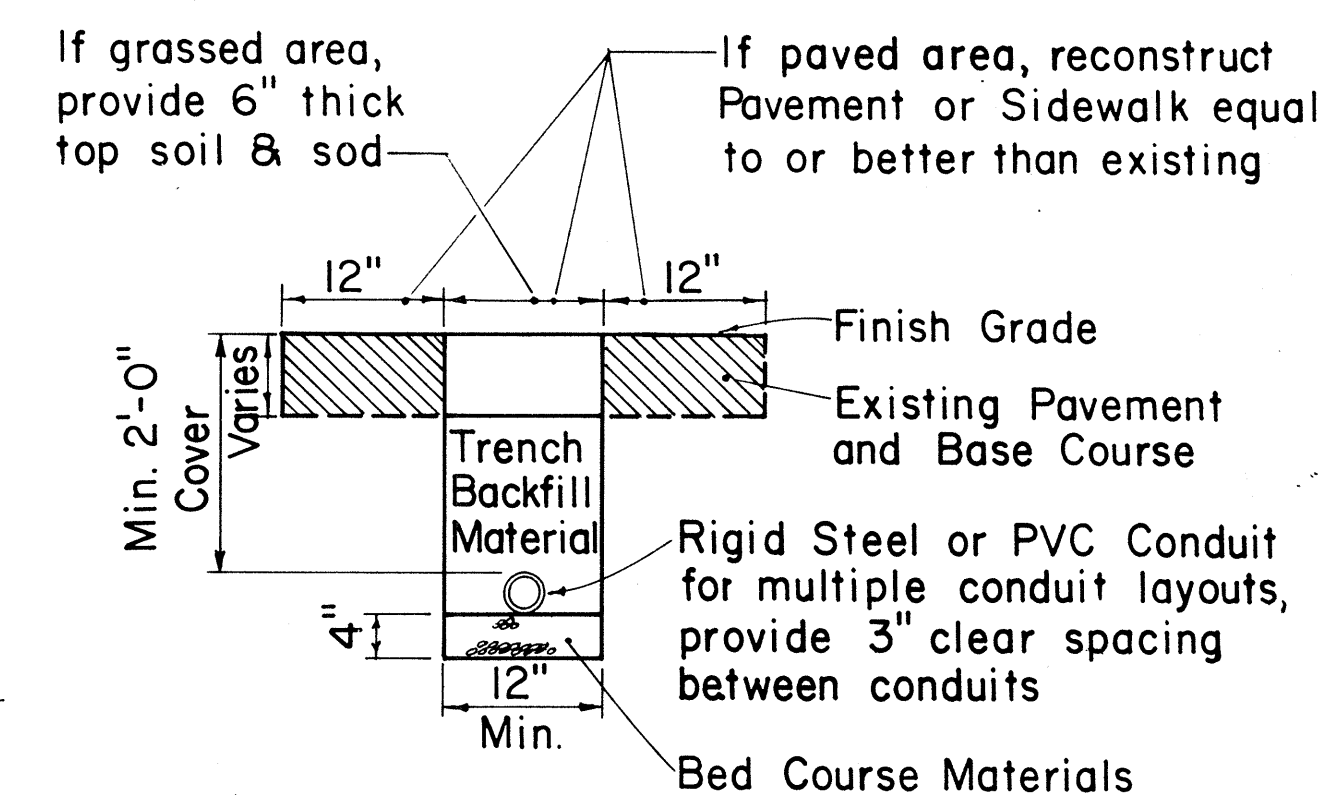
**TYPICAL SERIES-PARALLEL LOOP CONNECTION**



**DETAIL "B" SAW-CUT AT CORNERS**



**MULTIPLE LOOP LAYOUT**



**TYPICAL TRENCH SECTION FOR CONDUIT**

NOTE:  
1. All conduits under roadways shall be steel or PVC schedule 80. All other conduits shall be steel or PVC schedule 40.

APPROVAL RECOMMENDED:  
*Enrique Tanaka* 9/26/80  
TRAFFIC ENGINEER DATE  
APPROVED:  
*Enrique Tanaka* 9/26/80  
ASSISTANT CHIEF, ENGINEERING DATE

NO.	REVISION	APPROVED BY	DATE
1	Replaces Sht. DT 405 dated 3/5/76	H.I.	7/20/80
2	Revised Section A-A	H.I.	5/15/81

STATE OF HAWAII  
DEPARTMENT OF TRANSPORTATION  
HIGHWAYS DIVISION  
**STANDARD DETAILS**  
**LOOP DETECTORS**  
Not to Scale