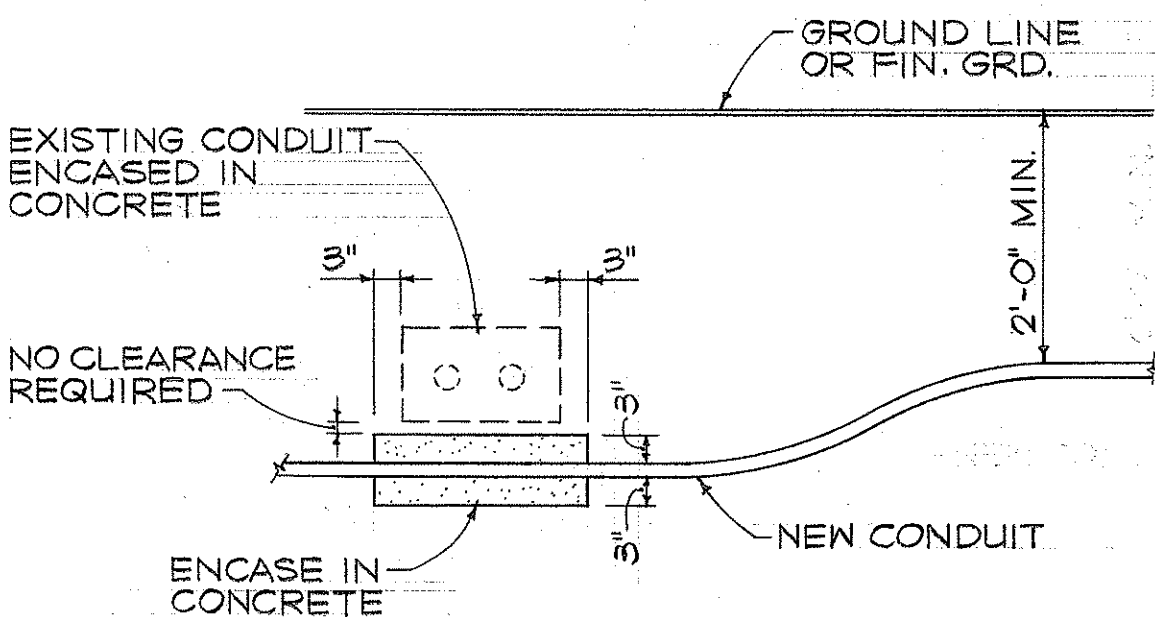


FED. ROAD DIST. NO.	STATE	PROJ. NO.	FISCAL YEAR	SHEET NO.	TOTAL SHEETS
HAWAII	HAW.	99D-02-79	1980	3	18

CONSTRUCTION NOTES

1. LOCATIONS OF EXISTING UNDERGROUND STRUCTURES AND UTILITIES, SUCH AS PIPELINES, CONDUIT CABLES, ETC. SHOWN ON PLANS ARE APPROXIMATE ONLY. IT IS NOT THE INTENT OF THESE PLANS TO SHOW THE EXACT LOCATION OF ALL UNDERGROUND UTILITIES AND STRUCTURES. IT IS THE RESPONSIBILITY OF THE CONTRACTOR TO VERIFY THE LOCATIONS OF ALL EXISTING UTILITIES WITH THE RESPECTIVE OWNERS. EXISTING UTILITIES DAMAGED BY THE CONTRACTOR SHALL BE REPAIRED BY THE CONTRACTOR AT HIS OWN COST.
2. THE LOCATIONS OF THE TRAFFIC SIGNAL STANDARDS, TRAFFIC SIGNAL STANDARDS WITH MAST ARM, PEDESTRIAN PUSH BUTTONS, TRAFFIC CONTROLLERS, PULL BOXES, CONDUITS AND TRAFFIC DETECTORS SHALL BE STAKED OUT IN THE FIELD BY THE CONTRACTOR AND APPROVAL OF THE LOCATIONS OBTAINED FROM THE ENGINEER PRIOR TO CONSTRUCTION AND INSTALLATION.
3. ALL TRAFFIC SIGNAL WORK SHALL CONFORM TO THE REQUIREMENTS OF THE "MANUAL ON UNIFORM TRAFFIC CONTROL DEVICES FOR STREETS AND HIGHWAYS," FEDERAL HIGHWAY ADMINISTRATION (1978) AND AMENDMENTS.
4. DEPARTMENT OF TRANSPORTATION SERVICES, CITY AND COUNTY OF HONOLULU, WILL ASSIST THE ENGINEER IN CONSTRUCTION INSPECTION FOR TRAFFIC SIGNAL SYSTEM.
5. WORK BY THE DEPARTMENT OF TRANSPORTATION SERVICES, CITY AND COUNTY OF HONOLULU:
- a. TEST CONTROLLER AND AUXILIARY EQUIPMENT IN CABINET.
  - b. MAKE ALL ELECTRICAL CONNECTIONS IN THE FIELD FOR SIGNAL SYSTEM AFTER THE SYSTEM HAS BEEN INSTALLED IN PLACE BY THE CONTRACTOR.
  - c. MASK AND ADJUST ALL PROGRAMMED VISIBILITY TRAFFIC SIGNAL HEADS.
  - d. FINAL ADJUSTMENT OF TRAFFIC SIGNAL CONTROL EQUIPMENT.
6. REMOVAL OF EXISTING SIGNS SHALL ALSO INCLUDE THE REMOVAL OF POSTS AND FOUNDATIONS UNLESS OTHERWISE NOTED. COSTS SHALL BE INCIDENTAL TO OTHER ITEMS OF WORK. SIGNS REMOVED SHALL BECOME THE PROPERTY OF THE CONTRACTOR.
7. LOCATIONS OF TRAFFIC MARKINGS AND MARKERS (LANE LINES, STOP LINES, CROSSWALKS, ETC.) SHOWN ON THE PLANS SHALL BE VERIFIED BY THE CONTRACTOR WITH THE ENGINEER PRIOR TO THE INSTALLATION OF THE TRAFFIC SIGNAL SYSTEM.
8. STOP SIGN SHALL BE REMOVED ONLY AFTER TRAFFIC SIGNAL SYSTEM IS OPERATIONAL.
9. A SOLID #8 BARE COPPER WIRE SHALL BE PULLED WITH THE 26C #14 CONTROL CABLE FOR EQUIPMENT GROUND. COST SHALL BE INCIDENTAL TO THE INSTALLATION OF THE 26C #14 CABLE.



CONDUIT BY-PASS DETAIL  
NOT TO SCALE

1/13/81	REVISED LOCATION OF SIDEWALK.
DATE	REVISION

THEODORE S. KAWAGUCHI  
REGISTERED PROFESSIONAL ENGINEER  
No. 3244-E  
HAWAII, U.S.A.

THIS WORK WAS PREPARED BY ME  
OR UNDER MY SUPERVISION

*Theodore S. Kawaguchi*  
Signature

STATE OF HAWAII  
DEPARTMENT OF TRANSPORTATION  
HIGHWAYS DIVISION

KAMEHAMEHA HIGHWAY  
TRAFFIC SIGNALS AT  
PUU MOMI STREET  
PROJECT NO. 99D-02-79  
STRIPING PLAN  
AND DETAIL

SCALE: AS SHOWN  
DATE: 6-6-79  
SHEET NO. 1 OF 1 SHEETS

SURVEY PLOTTED BY	DATE
DRAWN BY	
TRACED BY	
QUANTITIES BY	
CHECKED BY	
ORIGINAL PLAN	
NOTE BOOK	
NO.	