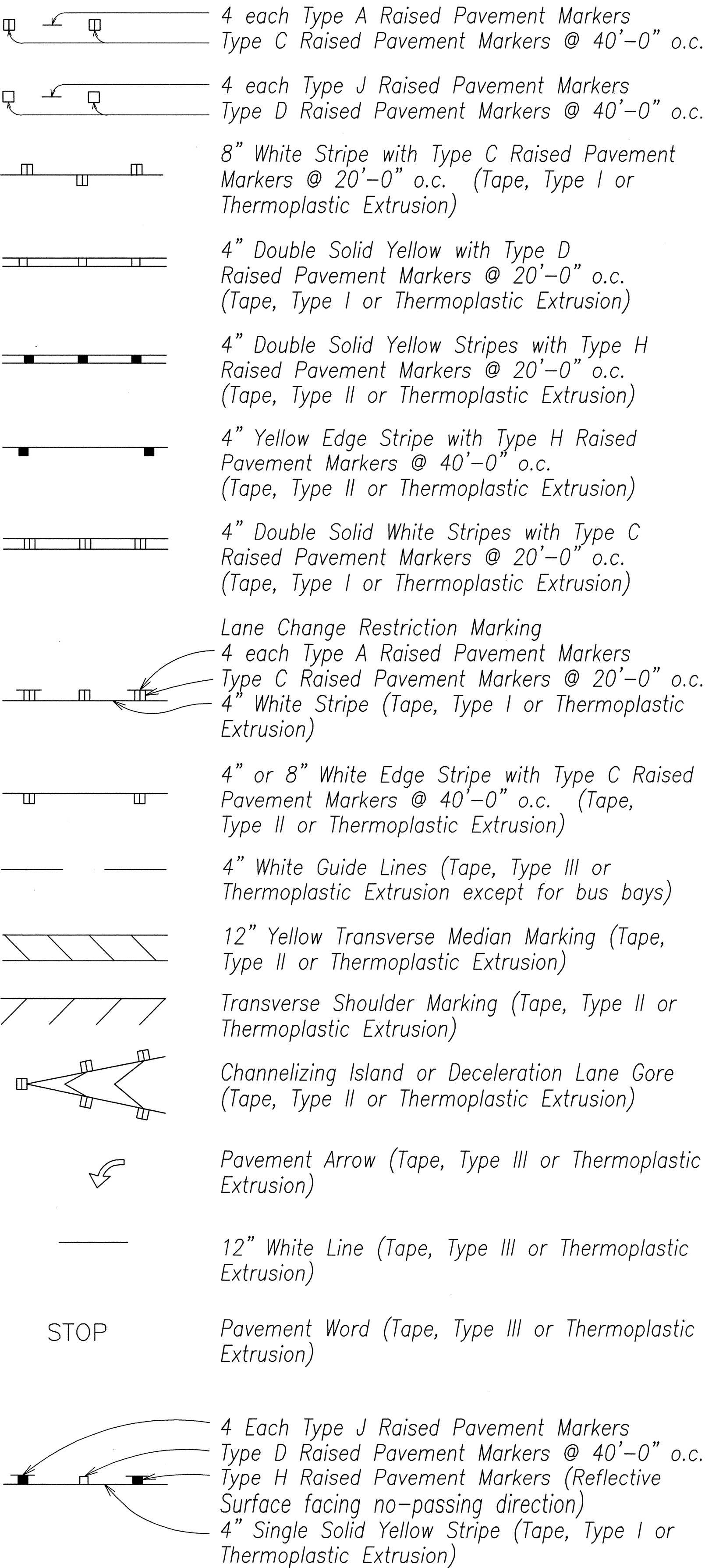


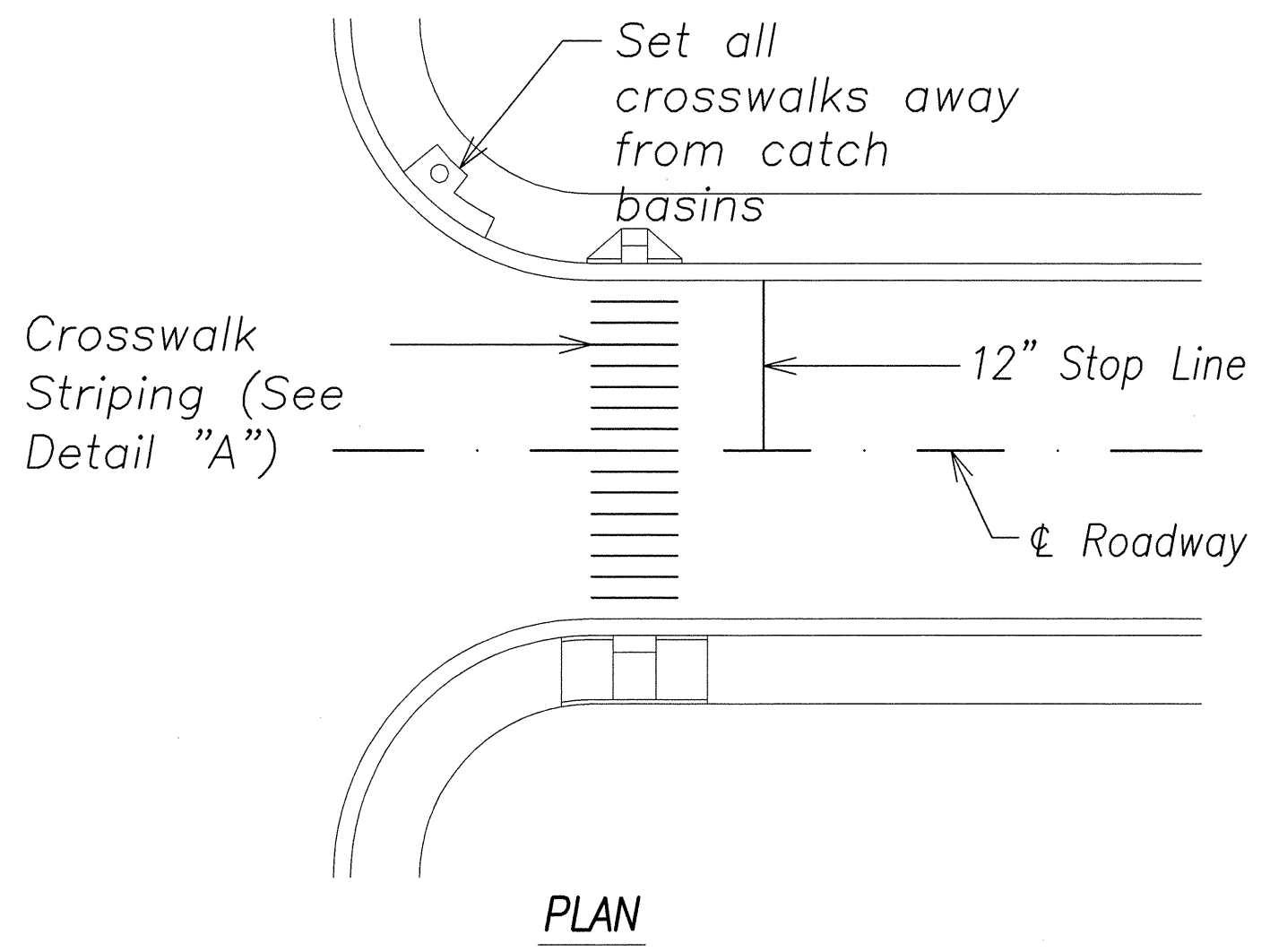
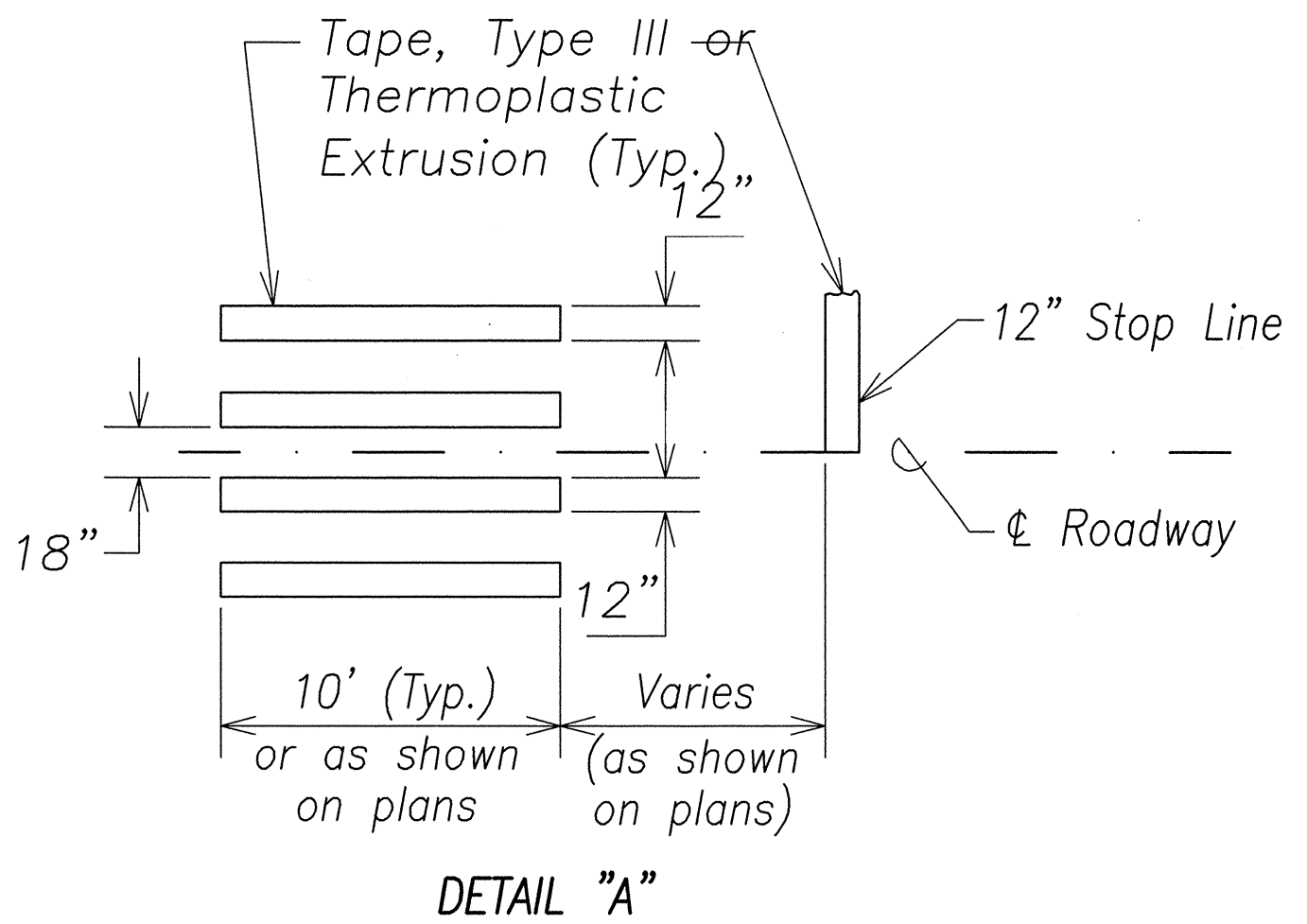
FED. ROAD DIST. NO.	STATE	PROJ. NO.	FISCAL YEAR	SHEET NO.	TOTAL SHEETS
OAHU	HAW.	99C-01-13	2014	18	41

LEGEND:

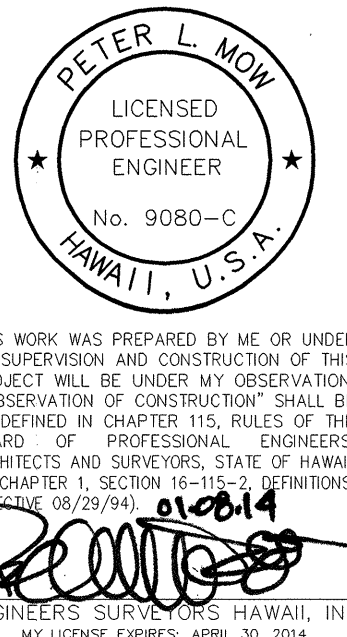


NOTES:

- Layout of pavement markings and striping shall be done by the Contractor and approved by the Engineer prior to any installation work.
- Existing pavement markings not incorporated in the final traffic pattern shall be removed as directed by the Engineer. Costs shall be incidental to the various pavement marking items.
- Raised pavement markers shall not be installed within crosswalks.
- Final locations of all signs shall be approved by the Engineer prior to any installation work.
- Existing signs not shown on these plans shall remain as posted unless otherwise directed by the Engineer. Removal and disposal of existing signs and/or posts as designated on these plans shall be incidental to the various signing items.
- Final locations of all Stop Lines shall be approved by the Engineer prior to installation.
- All pavement striping shall be as noted on the legend or plans.
- All preformed pavement marking tapes over existing pavement shall be applied with as approved primer as recommended by the tape manufacturer and as approved by the Engineer. The primer shall be allowed to dry to the tacky stage prior to tape application.
- The following abbreviations shall be used:
TI = Tape, Type I
TII = Tape, Type II
TIII = Tape, Type III
TPE = Thermoplastic Extrusion
RPM = Raised Pavement Markers
-C = RPM, Type C
-D = RPM, Type D
WS = White Stripe
DSY = Double Solid Yellow
WES = White Edge Stripe
WGL = White Guide Lines
TSM = Transverse Shoulder Markings
- Removal of existing Delineators and Posts as directed by the Engineer shall be considered incidental to the various signing items.
- Existing signs that are to be replaced shall not be removed until new signs are installed as replacements, or the messages are not longer necessary.
- Backing for all new regulatory and warning signs shall not be spliced.
- All sign panels shall conform to Section 631 of the Standard Specifications and the latest editions and amendments of the following FHWA publications:
a. "Manual on Uniform Traffic Control Devices for Street and Highways" (MUTCD)
b. "Standard Highway Signs"
c. "Standard Alphabets for Highway Signs"
- All new and relocated signs and markers installed on pipe post or light standard are to be mounted with band brackets and steel signs shall be with braces.
- The Contractor shall erect advanced construction warning signs at the beginning and at the end of the project. Construction warning signs shall be placed as indicated on the plans or as directed by the Engineer. All construction warning signs shall be kept in place and maintained by the Contractor for the duration of the project. The advanced construction warning signs shall be in addition to the required traffic control signs called for in Section 645 - Work Zone Traffic Control. The advance construction warning signs shall be new and upon completion of the project become the property of the State. The constructor shall remove, clean and deliver the signs and posts to the Oahu District baseyard in Honolulu or as directed by the Engineer.
- State Route Marker Symbols, borders, messages, arrows, symbols and shields shall conform to details as shown on the plans and as specified in the MUTCD.
- All Reflector Markers (RM-2) not protected by a vehicular barrier shall be mounted on a flexible delineator post unless otherwise directed by the Engineer.



CROSSWALK STRIPING DETAIL
Not to Scale



STATE OF HAWAII
DEPARTMENT OF TRANSPORTATION
HIGHWAYS DIVISION
PAVEMENT MARKING LEGEND, DETAILS & NOTES
(FOR WORK WITHIN STATE HIGHWAYS ROW)
TRAFFIC OPERATIONAL IMPROVEMENTS
AT VARIOUS LOCATIONS
Vicinity of Kamehameha Highway and
Lumiaina Street
Project No. 99C-01-13
Scale: As Noted Date: Jan 2014
SHEET No. 1 OF 4 SHEETS

ORIGINAL PLAN
NOTE BOOK
No.

SURVEY PLOTTED BY
DATE
DRAWN BY
DESIGNED BY
CHECKED BY

C:\Documents and Settings\Peter\My Documents\Projects\2009-028 Traffic Operational Improvements\Plans\AutoCAD Files\Construction\PI18-19_PM-DETAIL.dwg Wed Jan 08 2014 - 11:56am