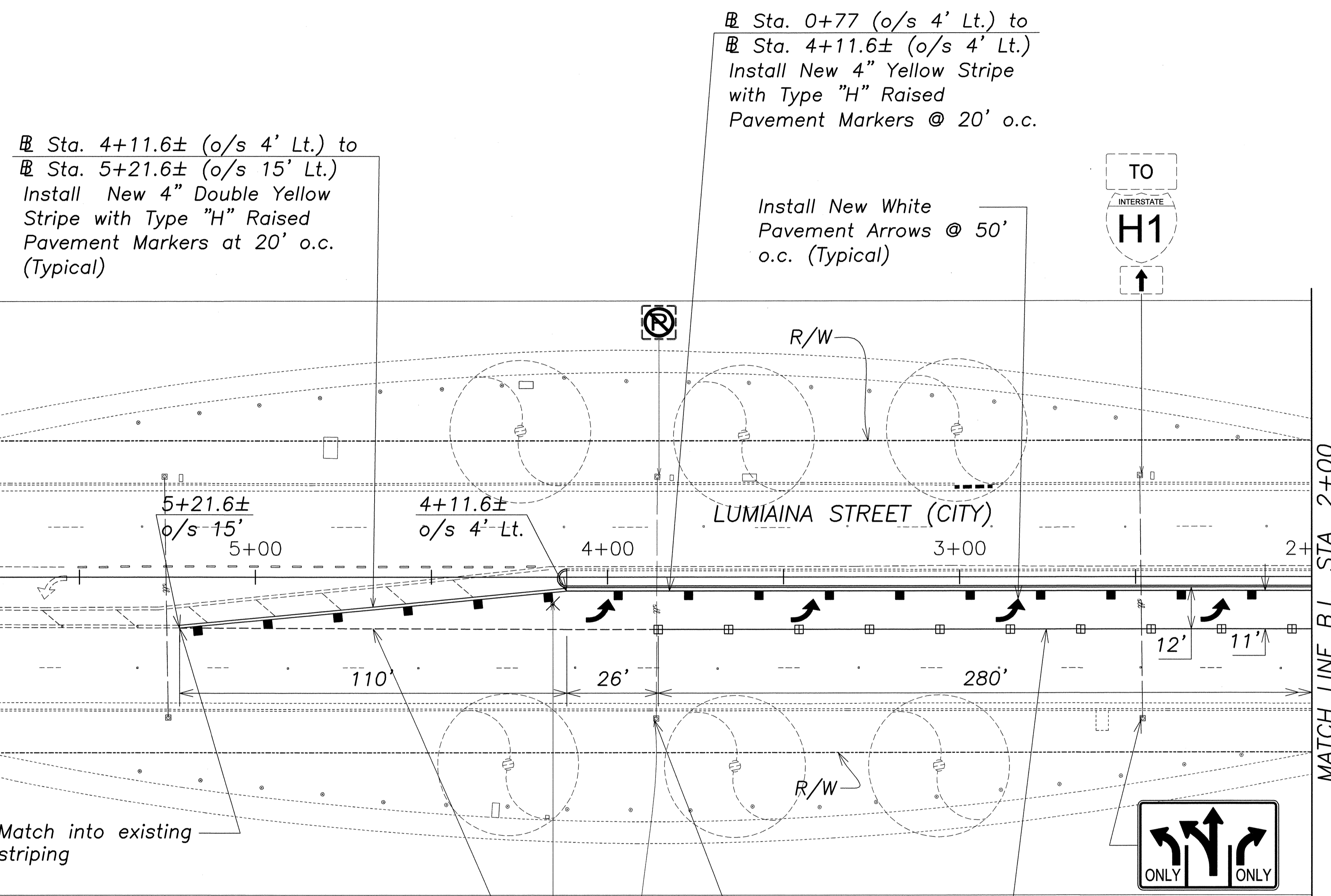
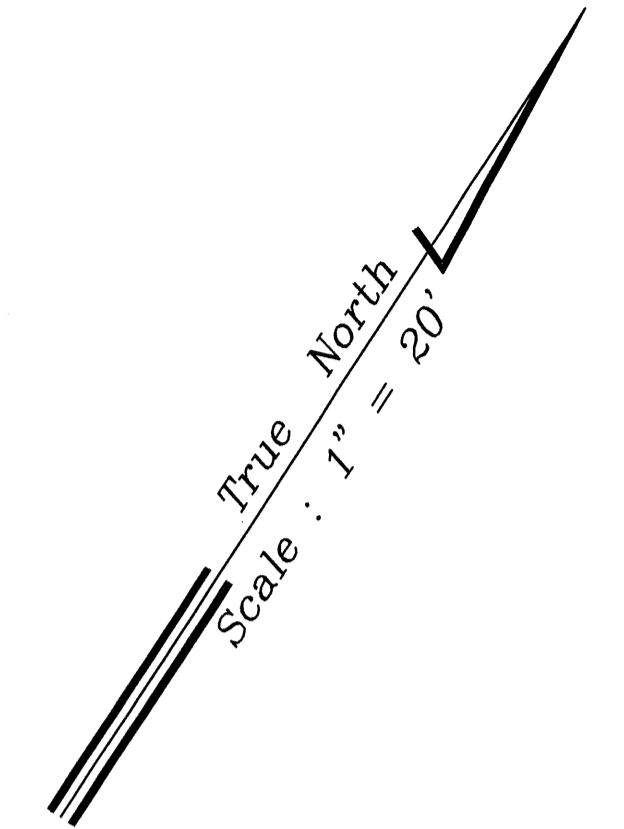


FED. ROAD DIST. NO.	STATE	PROJ. NO.	FISCAL YEAR	SHEET NO.	TOTAL SHEETS
OAHU	HAW.	99C-01-13	2014	20	41



Sta. 4+11.6± (o/s 4' Lt.) to
Sta. 5+21.6± (o/s 15' Lt.)
Install New 4" Double Yellow
Stripe with Type "H" Raised
Pavement Markers at 20' o.c.
(Typical)

Sta. 0+77 (o/s 4' Lt.) to
Sta. 4+11.6± (o/s 4' Lt.)
Install New 4" Yellow Stripe
with Type "H" Raised
Pavement Markers @ 20' o.c.

Install New White
Pavement Arrows @ 50'
o.c. (Typical)

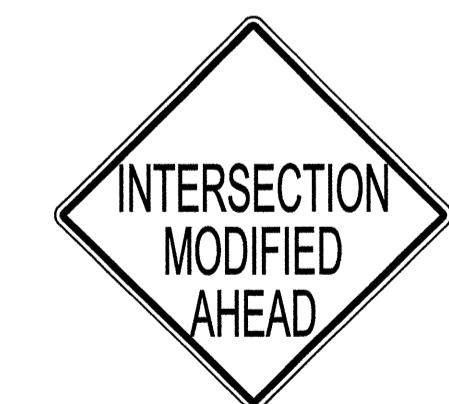
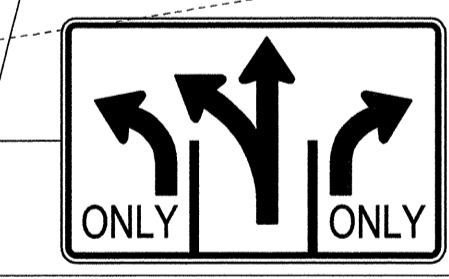
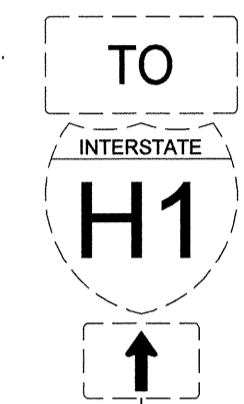
Match into existing
striping

Sta. 4+11.6± (o/s 15' Lt.) to
Sta. 5+21.6± (o/s 15' Lt.)
Install New 4" Wide White Stripe
2' Long @ 6' o.c.

Remove and
dispose of
exist. sign
and post.

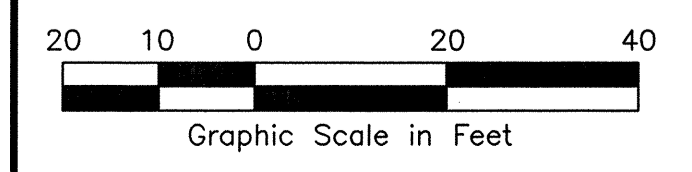
Install New Lane
Use Sign on
exist. street light
pole above exist.
"No Parking"
sign

Sta. 0+65.6± (o/s 15' Lt.) to
Sta. 4+11.6± (o/s 15' Lt.)
Install New 8" White Stripe with
Type "C" Raised Pav't Markers @
20' o.c.



Install New Signs
on exist. street
light pole

NOTE:
Refer to State of Hawaii, Department of
Transportation, Highways Division, Project
No.: HWY-0-06-09, "Pedestrian
Facilities & ADA Compliance at Various
Locations" for Details Regarding Future
Improvements



SURVEY PLOTTED BY	DATE
DRAWN BY	
TRACED BY	
DESIGNED BY	
QUANTITIES BY	
CHECKED BY	
NO.	

APPROVED:
[Signature]
1/29/14
DATE

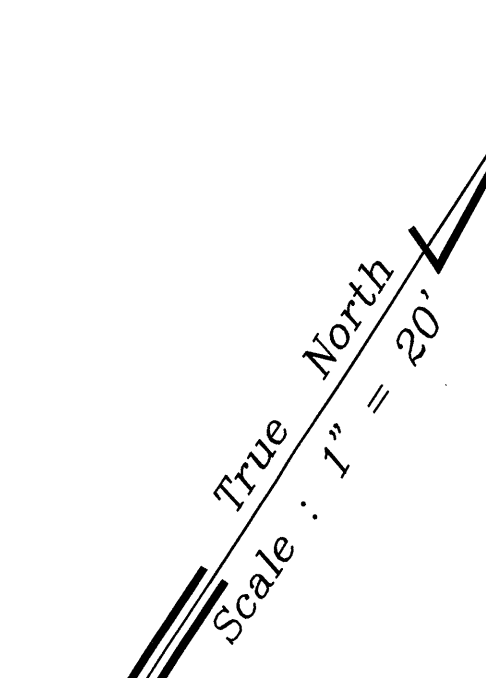
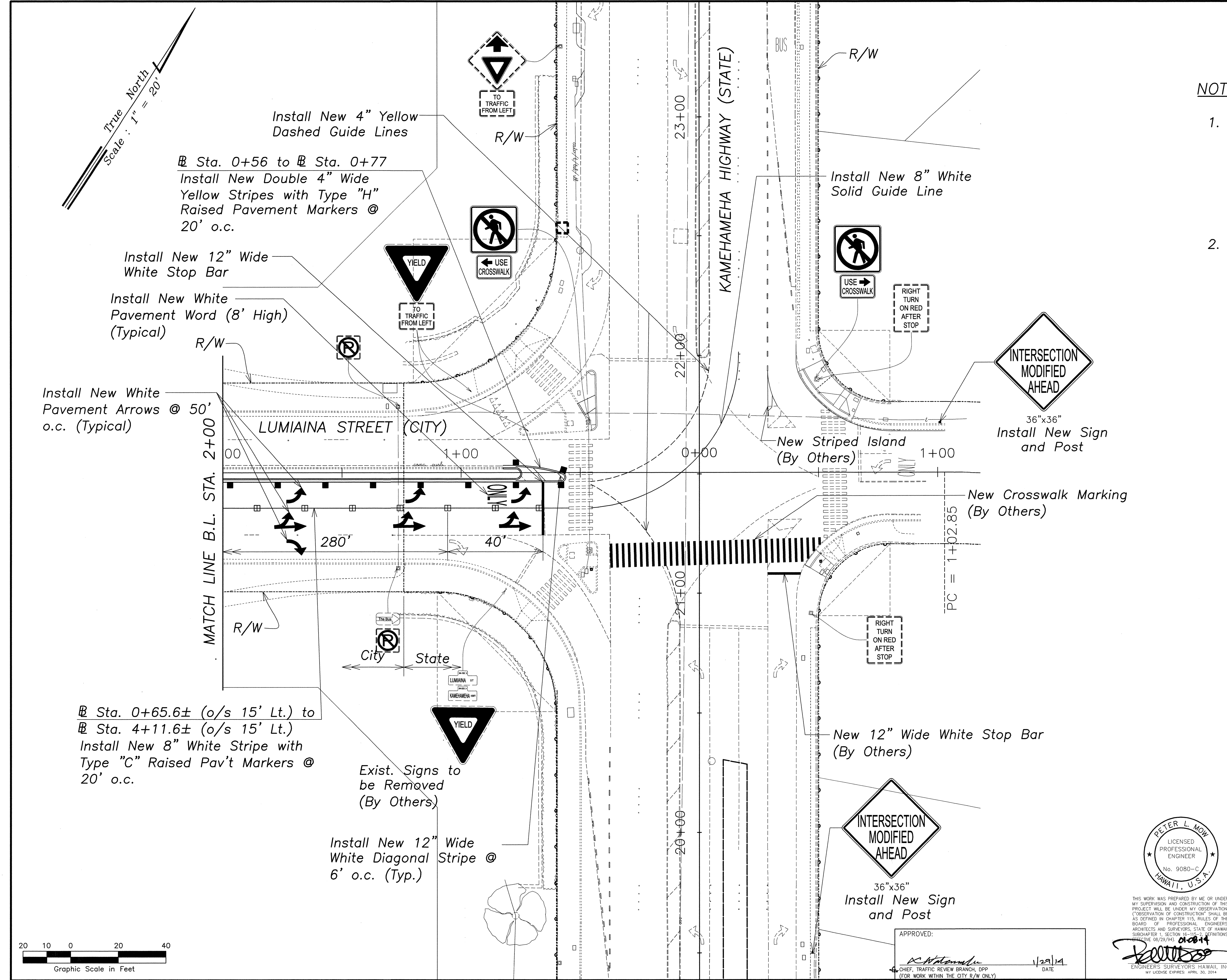
PETER L. MOW
LICENSED
PROFESSIONAL
ENGINEER
No. 9080-C
HAWAII, U.S.A.
THIS WORK WAS PREPARED BY ME OR UNDER MY SUPERVISION AND CONSTRUCTION OF THIS PROJECT WILL BE UNDER MY OBSERVATION. ("OBSERVATION OF CONSTRUCTION" SHALL BE AS DEFINED IN CHAPTER 110, RULES OF THE BOARD OF PROFESSIONAL ENGINEERS, ARCHITECTS AND SURVEYORS, STATE OF HAWAII, SUBCHAPTER 1, SECTION 110-115-7, DEFINITIONS, EFFECTIVE 08/29/94)

STATE OF HAWAII
DEPARTMENT OF TRANSPORTATION
HIGHWAYS DIVISION
**PAVEMENT MARKING
SIGNING & STRIPING PLAN**
TRAFFIC OPERATIONAL IMPROVEMENTS
AT VARIOUS LOCATIONS
Vicinity of Kamehameha Highway and
Lumina Street
Project No. 99C-01-13
Scale: As Noted Date: Jan 2014
SHEET No. 3 OF 4 SHEETS

FED. ROAD DIST. NO.	STATE	PROJ. NO.	FISCAL YEAR	SHEET NO.	TOTAL SHEETS
OAHU	HAW.	99C-01-13	2014	21	41

NOTES:

1. Refer to State of Hawaii, Department of Transportation, Highways Division, Project No.: HWY-0-06-09, "Pedestrian Facilities & ADA Compliance at Various Locations" for Details Regarding Future Improvements.
2. For Additional Signs within the Intersection, See Sheet 29.



Install New 4" Yellow Dashed Guide Lines
 @ Sta. 0+56 to @ Sta. 0+77
 Install New Double 4" Wide Yellow Stripes with Type "H" Raised Pavement Markers @ 20' o.c.

Install New 12" Wide White Stop Bar
 Install New White Pavement Word (8' High) (Typical)

Install New White Pavement Arrows @ 50' o.c. (Typical)

@ Sta. 0+65.6± (o/s 15' Lt.) to @ Sta. 4+11.6± (o/s 15' Lt.)
 Install New 8" White Stripe with Type "C" Raised Pav't Markers @ 20' o.c.

Exist. Signs to be Removed (By Others)
 Install New 12" Wide White Diagonal Stripe @ 6' o.c. (Typ.)

Install New 8" White Solid Guide Line

INTERSECTION MODIFIED AHEAD
 36"x36"
 Install New Sign and Post

New 12" Wide White Stop Bar (By Others)

INTERSECTION MODIFIED AHEAD
 36"x36"
 Install New Sign and Post

APPROVED: _____ DATE: 1/29/14
 CHIEF, TRAFFIC REVIEW BRANCH, DPP (FOR WORK WITHIN THE CITY R/W ONLY)

PETER L. MOW
 LICENSED PROFESSIONAL ENGINEER
 No. 9080-C
 HAWAII, U.S.A.
 THIS WORK WAS PREPARED BY ME OR UNDER MY SUPERVISION AND CONSTRUCTION OF THIS PROJECT WILL BE UNDER MY OBSERVATION. ("OBSERVATION OF CONSTRUCTION" SHALL BE AS DEFINED IN CHAPTER 115, RULES OF THE BOARD OF PROFESSIONAL ENGINEERS, ARCHITECTS AND SURVEYORS, STATE OF HAWAII, SUBCHAPTER 1, SECTION 16-115-5, DEFINITIONS, EFFECTIVE 08/29/04.)
 ENGINEERS SURVEYORS HAWAII, INC.
 MY LICENSE EXPIRES APRIL 30, 2014

STATE OF HAWAII
 DEPARTMENT OF TRANSPORTATION
 HIGHWAYS DIVISION
**PAVEMENT MARKING
 SIGNING & STRIPING PLAN**
 TRAFFIC OPERATIONAL IMPROVEMENTS
 AT VARIOUS LOCATIONS
 Vicinity of Kamehameha Highway and
 Lumaina Street
 Project No. 99C-01-13
 Scale: As Noted Date: Jan 2014
 SHEET No. 4 OF 4 SHEETS

SURVEY PLOTTED BY _____	DATE _____
ORIGINAL PLAN DRAWN BY _____	
NOTE BOOK TRACED BY _____	
DESIGNED BY _____	
CHECKED BY _____	
No. _____	

