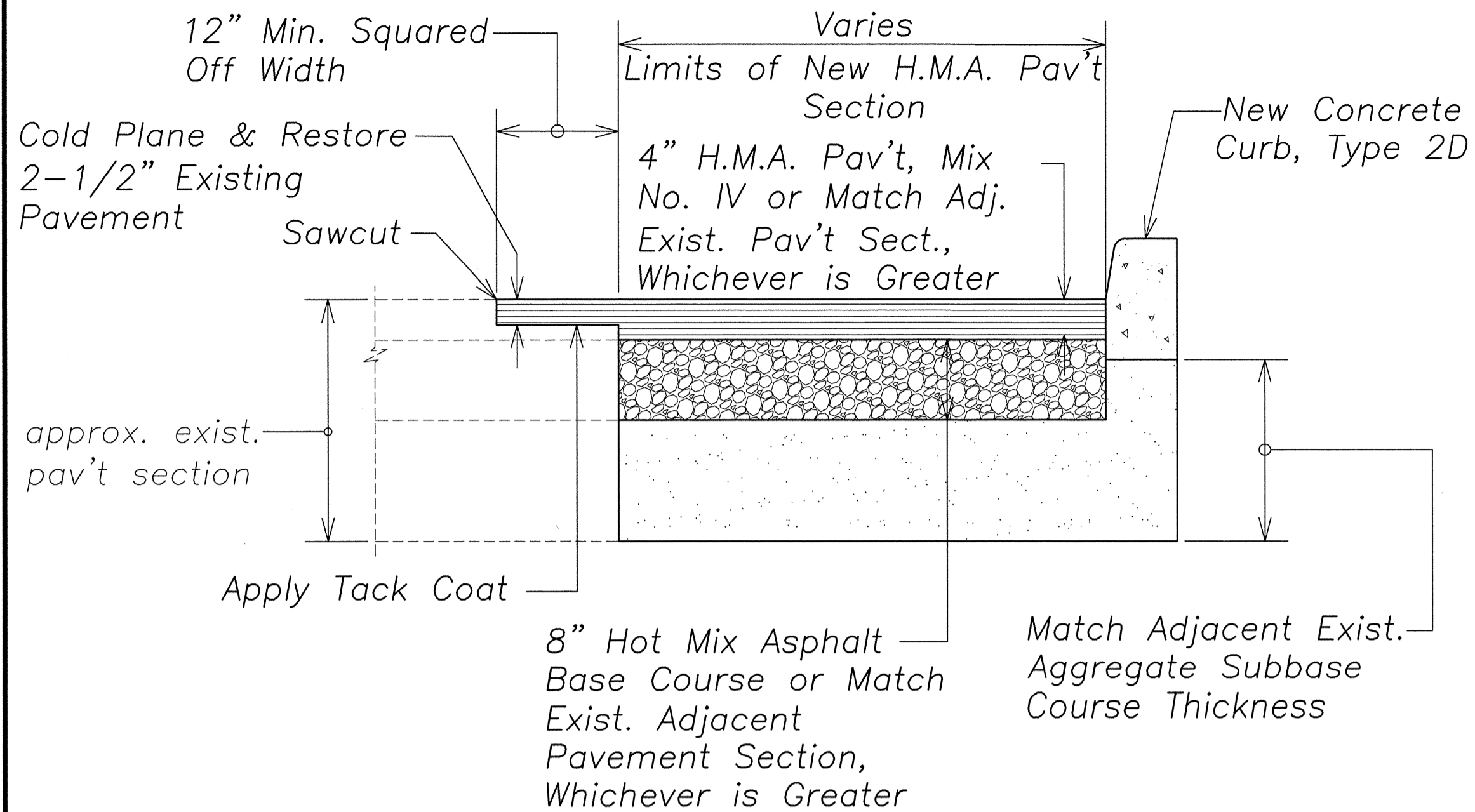
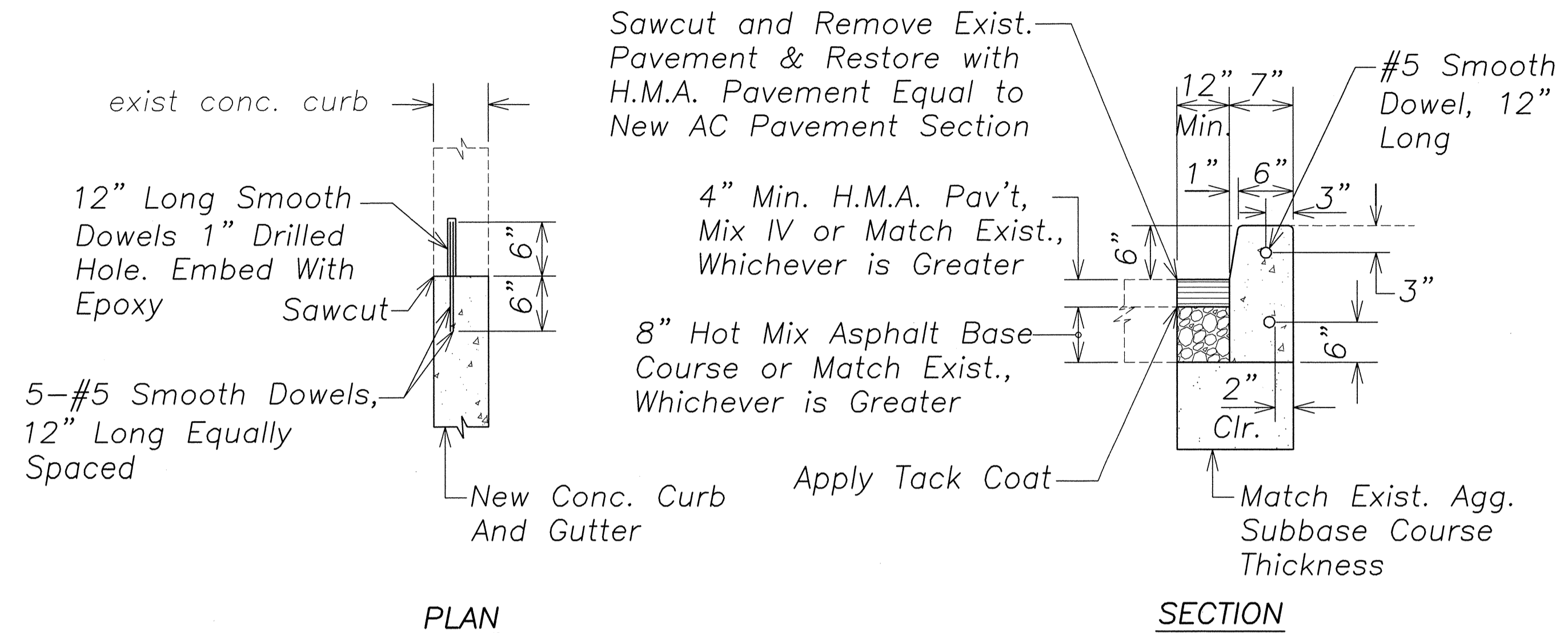


FED. ROAD DIST. NO.	STATE	PROJ. NO.	FISCAL YEAR	SHEET NO.	TOTAL SHEETS
OAHU	HAW.	99C-01-13	2014	17	41

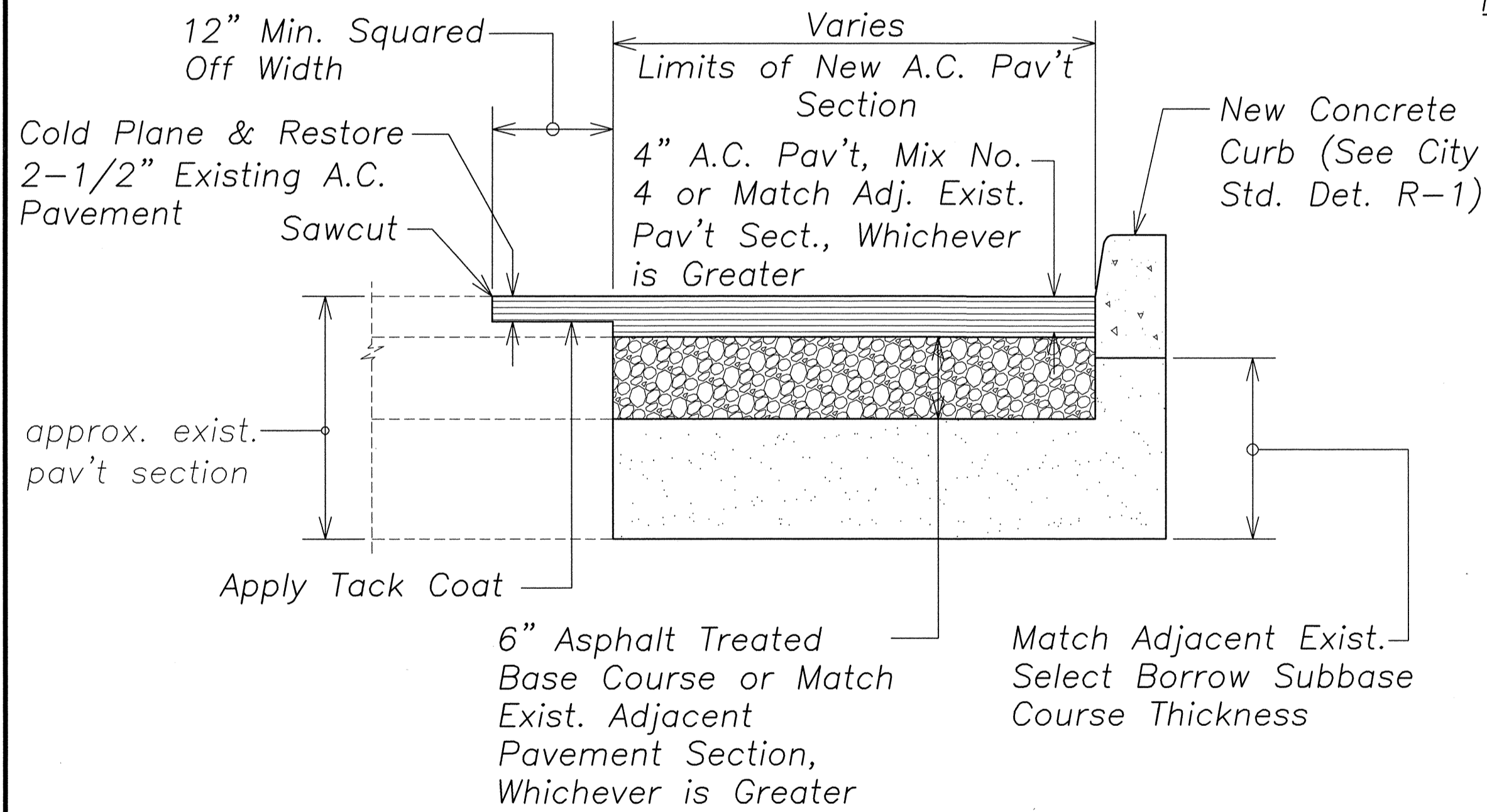


**TYPICAL H.M.A. PAVEMENT SECTION CONNECTION DETAIL**  
(For Work within STATE Highways)  
Not to Scale

- Notes:**
1. Sawcut, Tack Coat and Compaction of Subgrade will not be paid for separately, but shall be considered to be incidental to other payment contract items.
  2. Compact subgrade to 95% relative compaction.
  3. If Subgrade is too wet to achieve 95% Relative Compaction, consider over excavating 12" Subgrade prior to compaction.

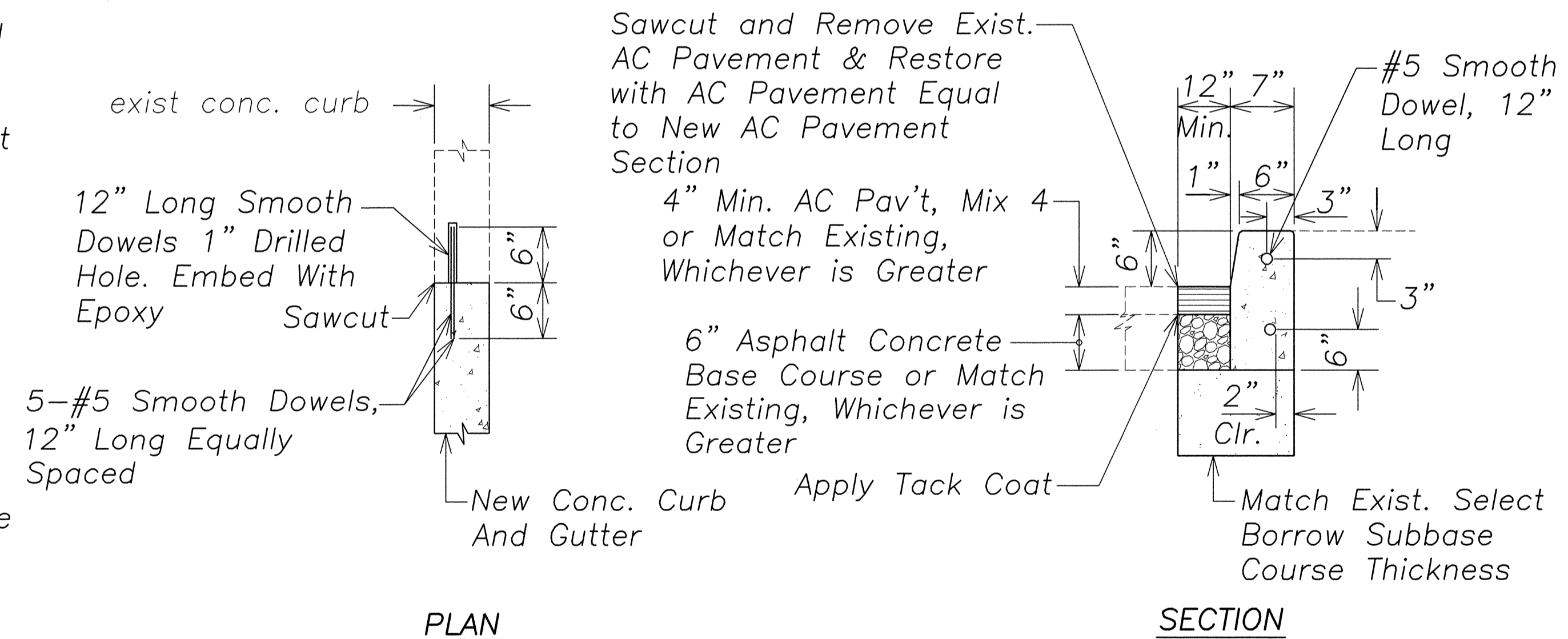


**TYPICAL STANDARD CONCRETE CURB TYPE 2D CONNECTION DETAIL**  
(For Work within STATE Highways)  
Not to Scale



**TYPICAL A.C. PAVEMENT SECTION CONNECTION DETAIL**  
(For Work within CITY Right-of-Way)  
Not to Scale

- Notes:**
1. Sawcut, Tack Coat and Compaction of Subgrade will not be paid for separately, but shall be considered to be incidental to other payment contract items.
  2. Compact subgrade to 95% relative compaction.
  3. If Subgrade is too wet to achieve 95% Relative Compaction, consider over excavating 12" Subgrade prior to compaction.



**TYPICAL STANDARD CONCRETE CURB CONNECTION DETAIL**  
(For Work within CITY Right-of-Way)  
Not to Scale

ORIGINAL PLAN	DATE
DESIGNED BY	
NOTED BY	
CHECKED BY	
NO.	

C:\Documents and Settings\Peter L. Mow\My Documents\Projects\2009-028 Traffic Operational Improvements\Plans\AutoCAD Files Construction\PI17 DETAIL.dwg Wed, Jan 08 2014 - 11:56am

APPROVED:  
*Melvin J. S. S. S.* 1/22/14  
CHIEF, CIVIL ENGINEERING BRANCH, DPP  
(FOR WORK WITHIN CITY R/W ONLY)

PETER L. MOW  
LICENSED PROFESSIONAL ENGINEER  
No. 9080-C  
HAWAII, U.S.A.  
THIS WORK WAS PREPARED BY ME OR UNDER MY SUPERVISION AND CONSTRUCTION OF THIS PROJECT WILL BE UNDER MY OBSERVATION. ("OBSERVATION OF CONSTRUCTION" SHALL BE AS DEFINED IN CHAPTER 115, RULES OF THE BOARD OF PROFESSIONAL ENGINEERS, ARCHITECTS AND SURVEYORS, STATE OF HAWAII, SUBCHAPTER 1, SECTION 16-115-2, DEFINITIONS, EFFECTIVE 08/29/94)  
1/22/14  
ENGINEERS SURVEYORS HAWAII, INC.  
MY LICENSE EXPIRES APRIL 30, 2014

STATE OF HAWAII  
DEPARTMENT OF TRANSPORTATION  
HIGHWAYS DIVISION  
**MISCELLANEOUS DETAILS**  
**TRAFFIC OPERATIONAL IMPROVEMENTS AT VARIOUS LOCATIONS**  
**Vicinity of Kamehameha Highway and Lumiaina Street**  
Project No. 99C-01-13  
Scale: As Noted Date: Jan 2014  
SHEET No. 1 OF 1 SHEETS