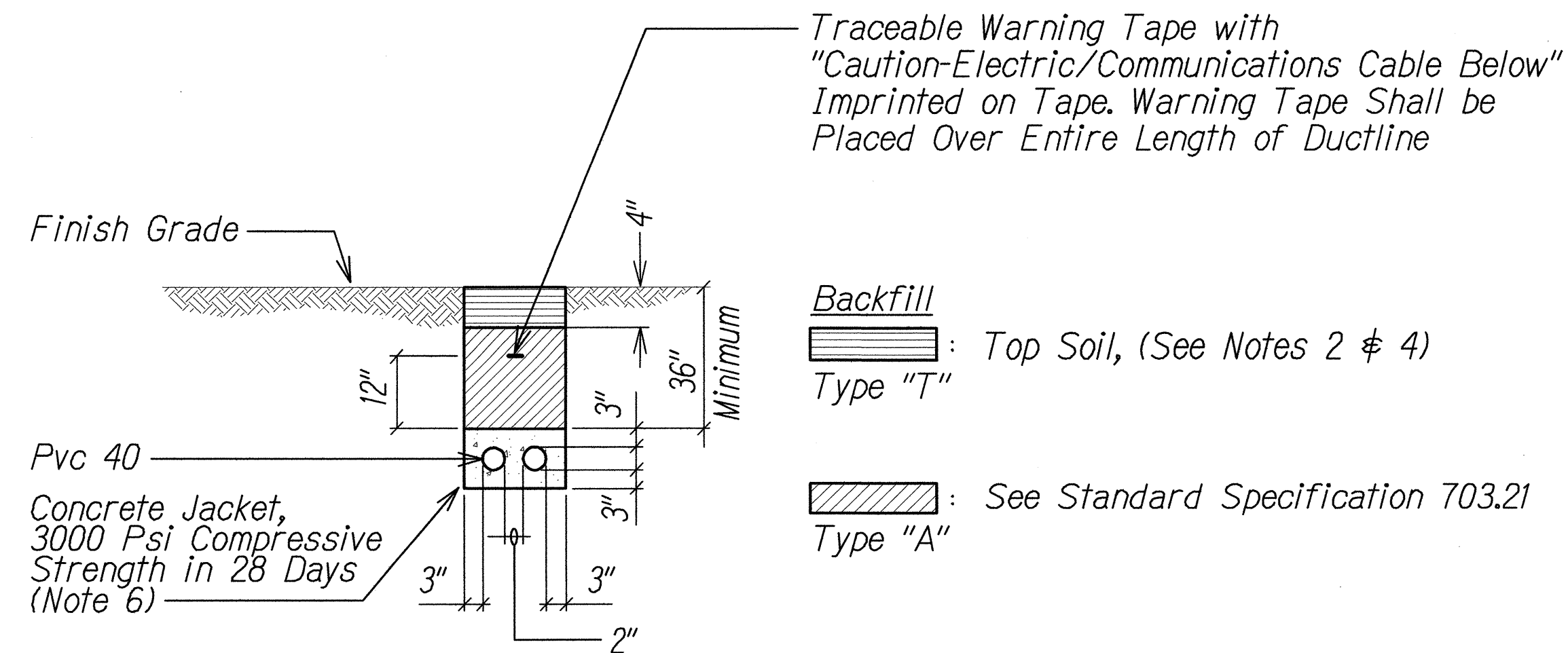


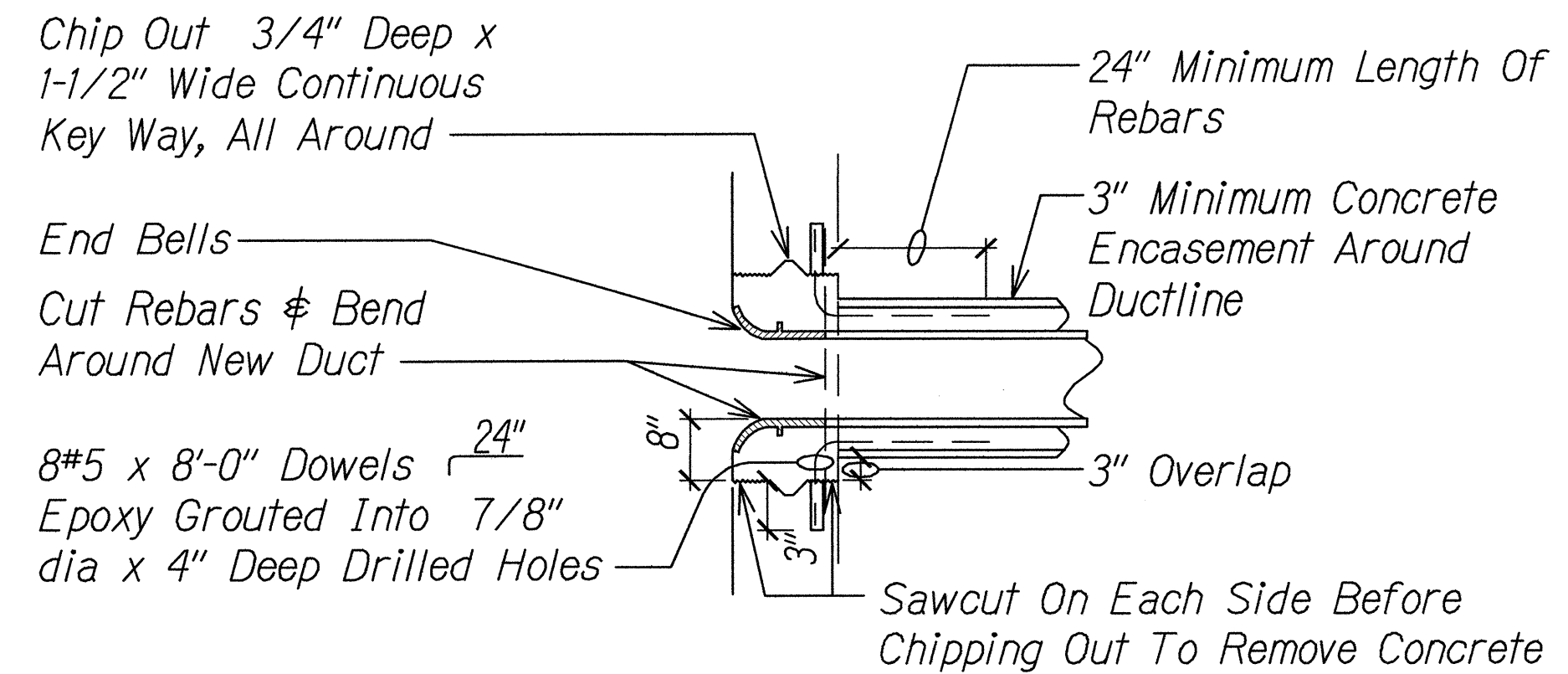
FED. ROAD DIST. NO.	STATE	PROJ. NO.	FISCAL YEAR	SHEET NO.	TOTAL SHEETS
OAHU	HAW.	99C-01-13	2014	38	41



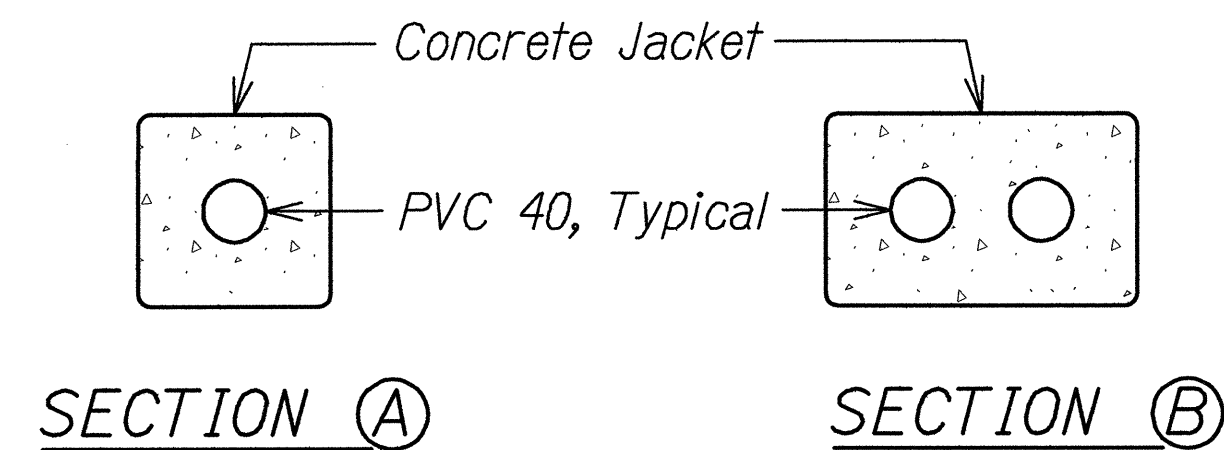
A
E-006 E-006 NTS
TYPICAL DUCT SECTION FOR UNPAVED AREA

NOTES:

1. Provide 2" Separation Between Ducts of Same System and 3" Between Ducts of Different Systems.
2. Where Trench Encounters Grass or Landscaping, Provide 4" Top Soil After Trench is Backfilled, and Restore Landscaping to Match Existing Adjacent Areas.
3. See Duct Section Details for Conduit Arrangement.
4. Where Trench Encounters Existing Concrete Sidewalk, Sidewalk Shall be Demolished. Backfill, Compact and Replace Sidewalk to Match Existing. Omit Top Soil in Trench Restoration and Provide Minimum 4" Thick Concrete Sidewalk to Match Original Finish. Replace Entire Width of Sidewalk so that there is No Evidence that a Duct was Installed Below the Sidewalk.
5. For Trenching in AC Pavement Roadway the Minimum Required Depth is 36" to Top of Duct. For Trenching in All Other Areas, the Minimum Required Depth is 34" to Top of Duct.
6. Provide PVC 80 Conduit Where Concrete Jacket is Not Indicated on Duct Section Details.
7. See State Highway Standard Plan TE-36 for Trench Details at Asphalt Concrete Pavement Areas.
8. Refer to Civil Drawings for Trench Restoration Details.



B
E-006 E-006 NTS
DETAIL OF TYPICAL DUCT ENTRY INTO MANHOLE/HANDHOLE

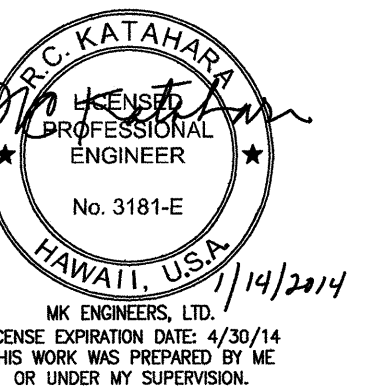


SECTION A **SECTION B**

DUCT SECTION DETAILS
NTS

NOTES:

1. See Standard Plan TE-36 for Trench Details in Asphalt Concrete Paved Areas.
2. See Details on this Sheet for Trench Details in Non-Traffic Areas.



STATE OF HAWAII
DEPARTMENT OF TRANSPORTATION
HIGHWAYS DIVISION

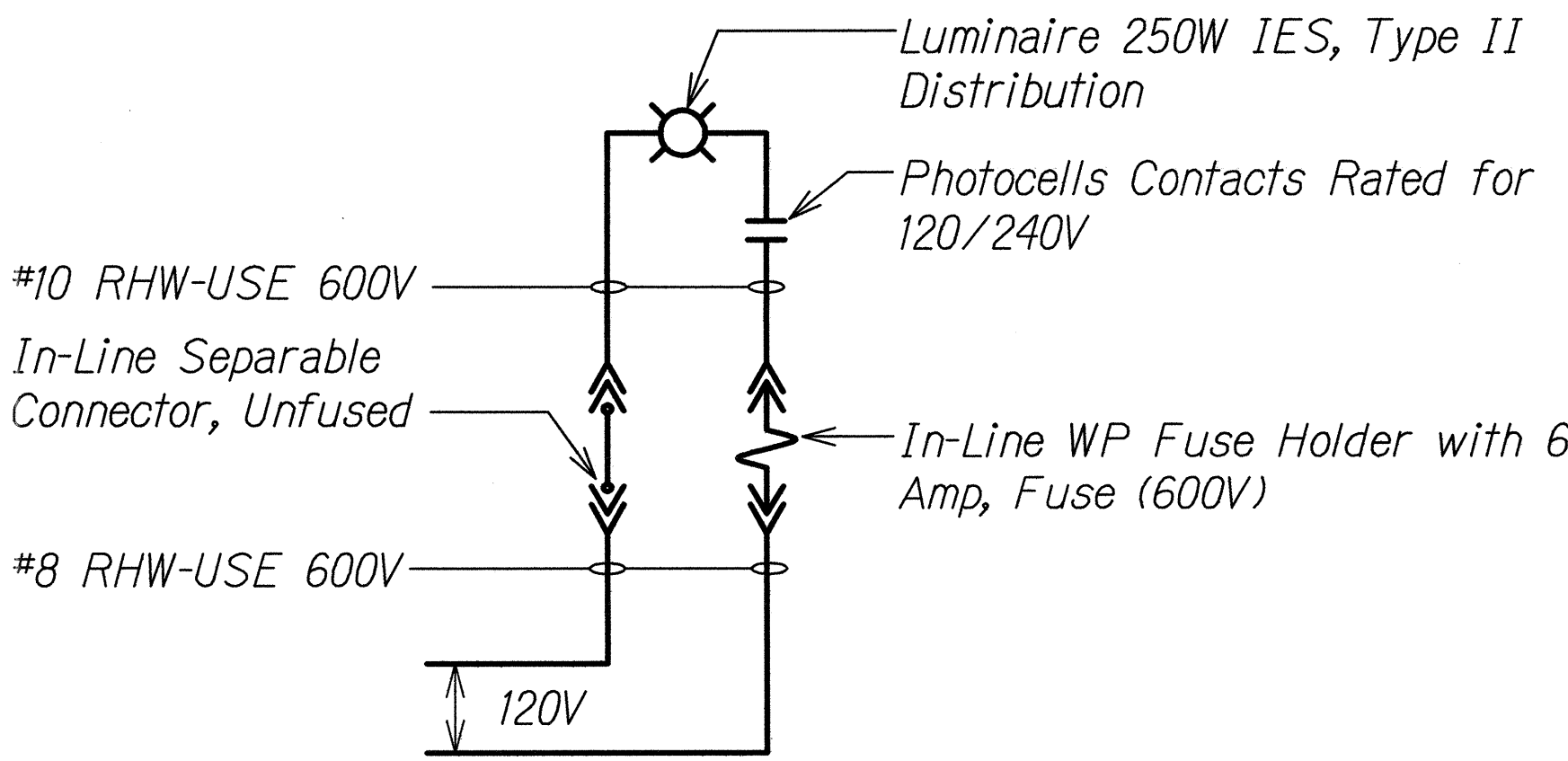
DUCT SECTION

**TRAFFIC OPERATIONAL IMPROVEMENTS
AT VARIOUS LOCATIONS**
Vicinity of Kamehameha Highway and
Lumaina Street
Project No. 99C-01-13

Scale: As Noted Date: Jan 2014

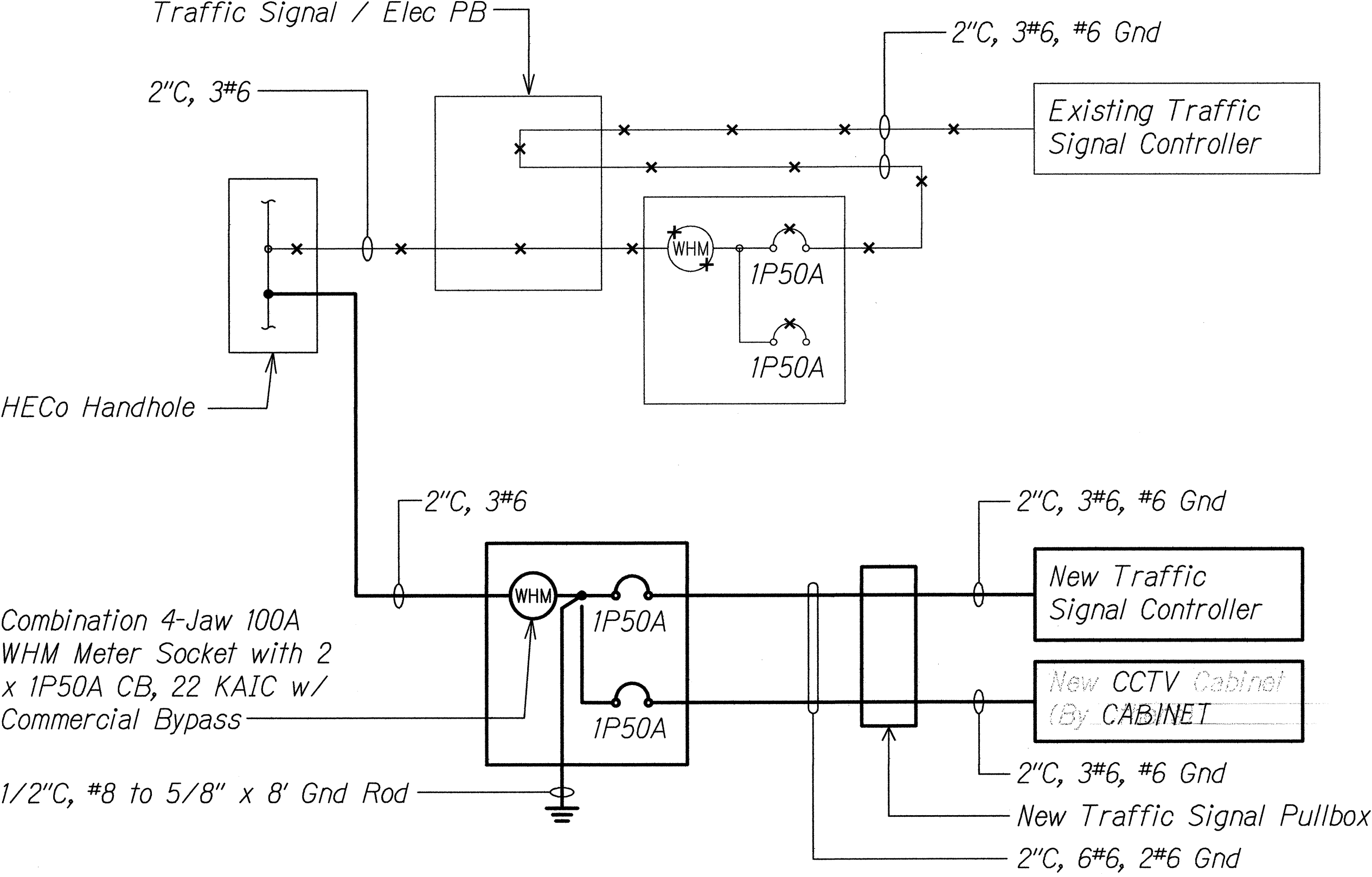
SHEET No. E-006 OF 9 SHEETS

FED. ROAD DIST. NO.	STATE	PROJ. NO.	FISCAL YEAR	SHEET NO.	TOTAL SHEETS
OAHU	HAW.	99C-01-13	2014	39	41



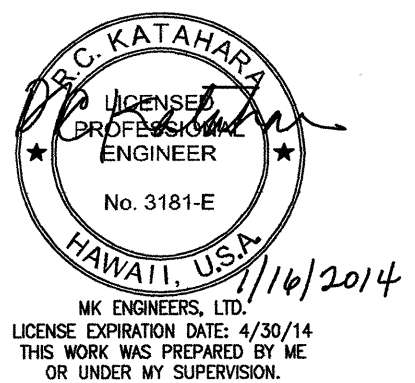
NOTES:
 All Neutral Conductors Must Have White Insulation. Any Other Method of Identification is Unacceptable.

STREET LIGHT DETAIL
 E-008 | E-007 NTS



ONE-LINE DIAGRAM

ORIGINAL PLAN	DATE
NOTE BOOK	
DESIGNED BY	
QUANTITIES BY	
CHECKED BY	



STATE OF HAWAII
 DEPARTMENT OF TRANSPORTATION
 HIGHWAYS DIVISION

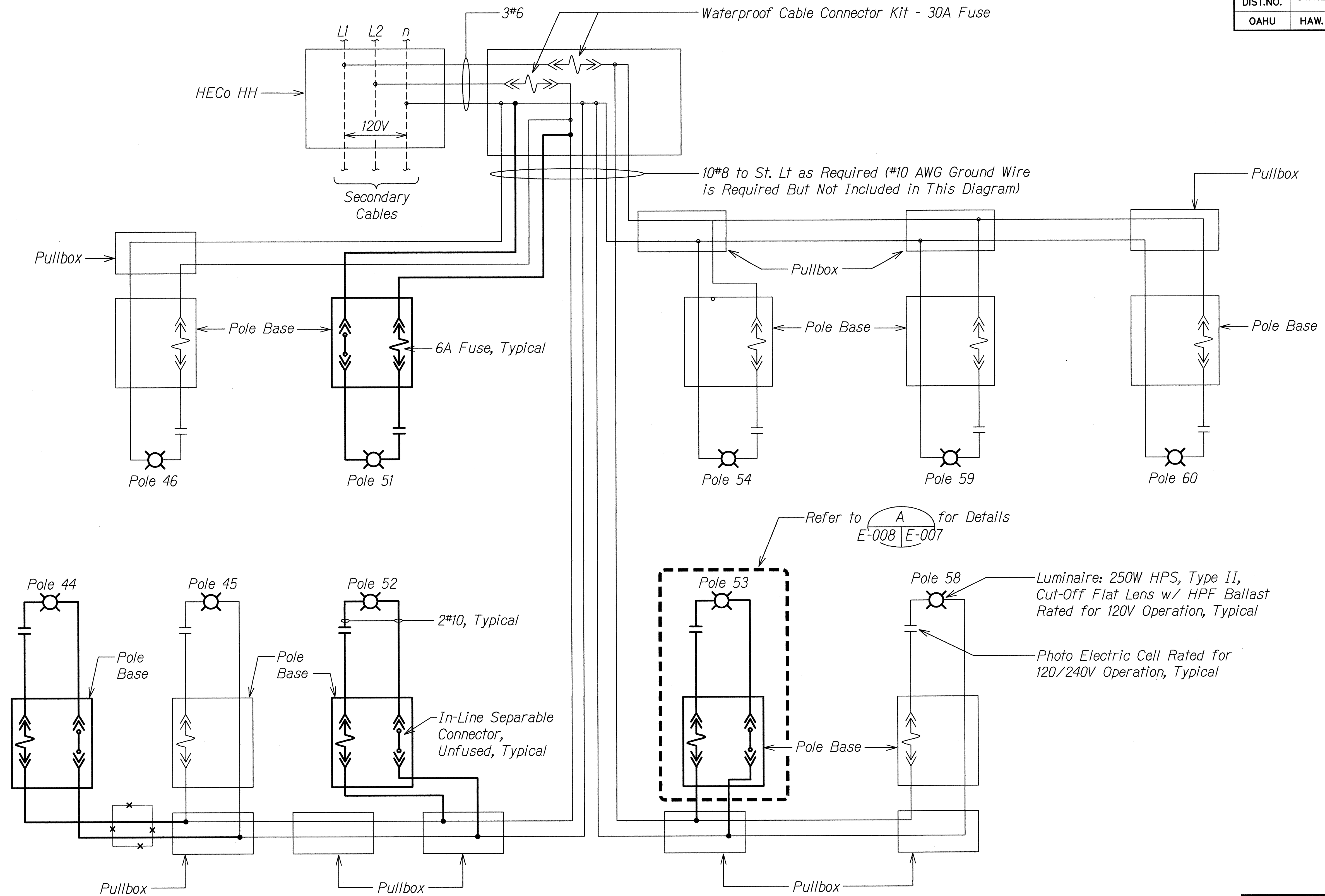
ONE-LINE DIAGRAMS

TRAFFIC OPERATIONAL IMPROVEMENTS AT VARIOUS LOCATIONS
 Vicinity of Kamehameha Highway and Lumaina Street
 Project No. 99C-01-13

Scale: As Noted Date: Jan 2014

SHEET No. E-007 OF 9 SHEETS

FED. ROAD DIST. NO.	STATE	PROJ. NO.	FISCAL YEAR	SHEET NO.	TOTAL SHEETS
OAHU	HAW.	99C-01-13	2014	40	41

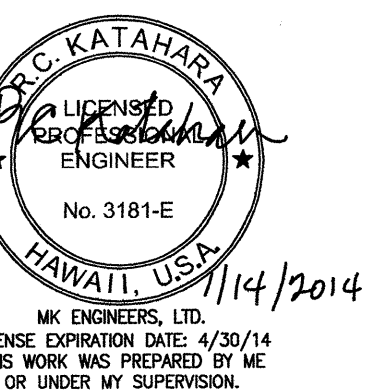


STREET LIGHT ONE-LINE DAIGRAM

NOTES:

1. ——— LIGHT LINES DENOTE EXISTING CONDITION
———— BOLD LINES DENOTE NEW WORK

SURVEY PLOTTED BY	DATE
DESIGNED BY	
QUANTITIES BY	
CHECKED BY	
ORIGINAL PLAN	No.



STATE OF HAWAII DEPARTMENT OF TRANSPORTATION HIGHWAYS DIVISION	
STREET LIGHT ONE-LINE DAIGRAM	
TRAFFIC OPERATIONAL IMPROVEMENTS AT VARIOUS LOCATIONS Vicinity of Kamehameha Highway and Lumiaina Street Project No. 99C-01-13	
Scale: As Noted	Date: Jan 2014
SHEET No. E-008 OF 9 SHEETS	

