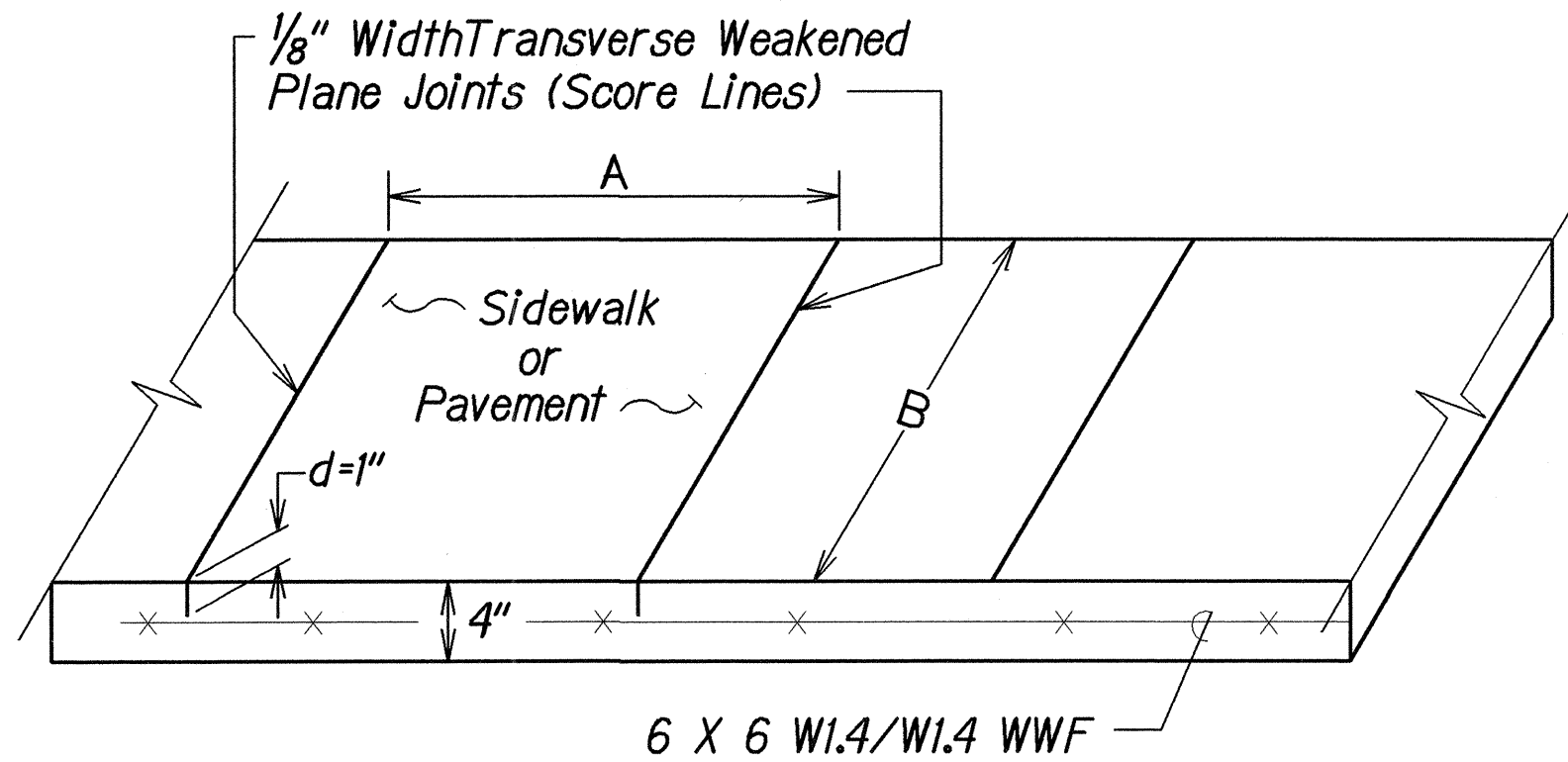
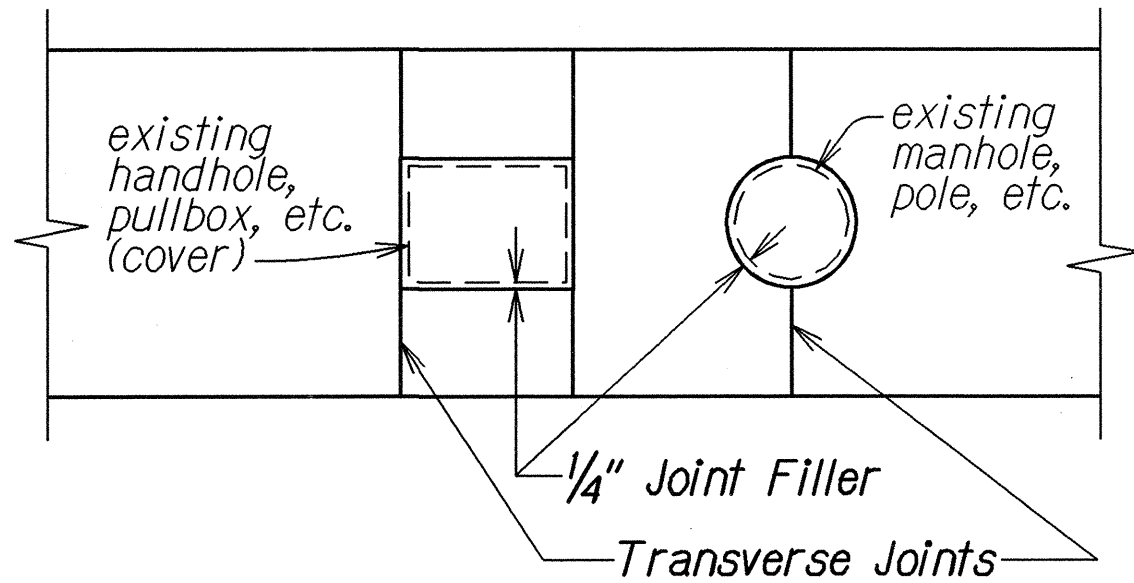


FED. ROAD DIST. NO.	STATE	PROJ. NO.	FISCAL YEAR	SHEET NO.	TOTAL SHEETS
HAWAII	HAW.	NH-099-1(24)	2007	17	74

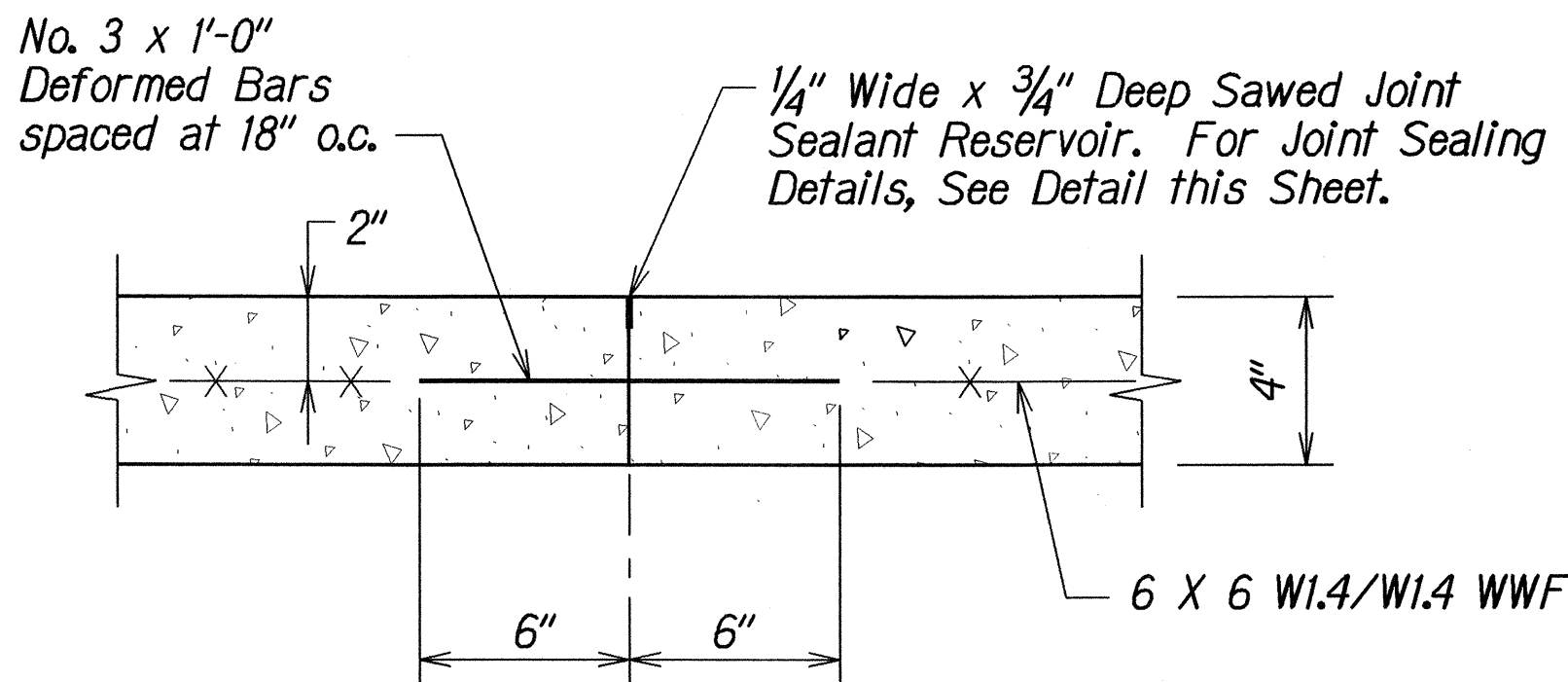


Note:
1. $A = 5'$ if $B < 7'$ or $(B/A \text{ or } A/B) < 1.25$
and $(A \text{ or } B)$ not to exceed $7'0$

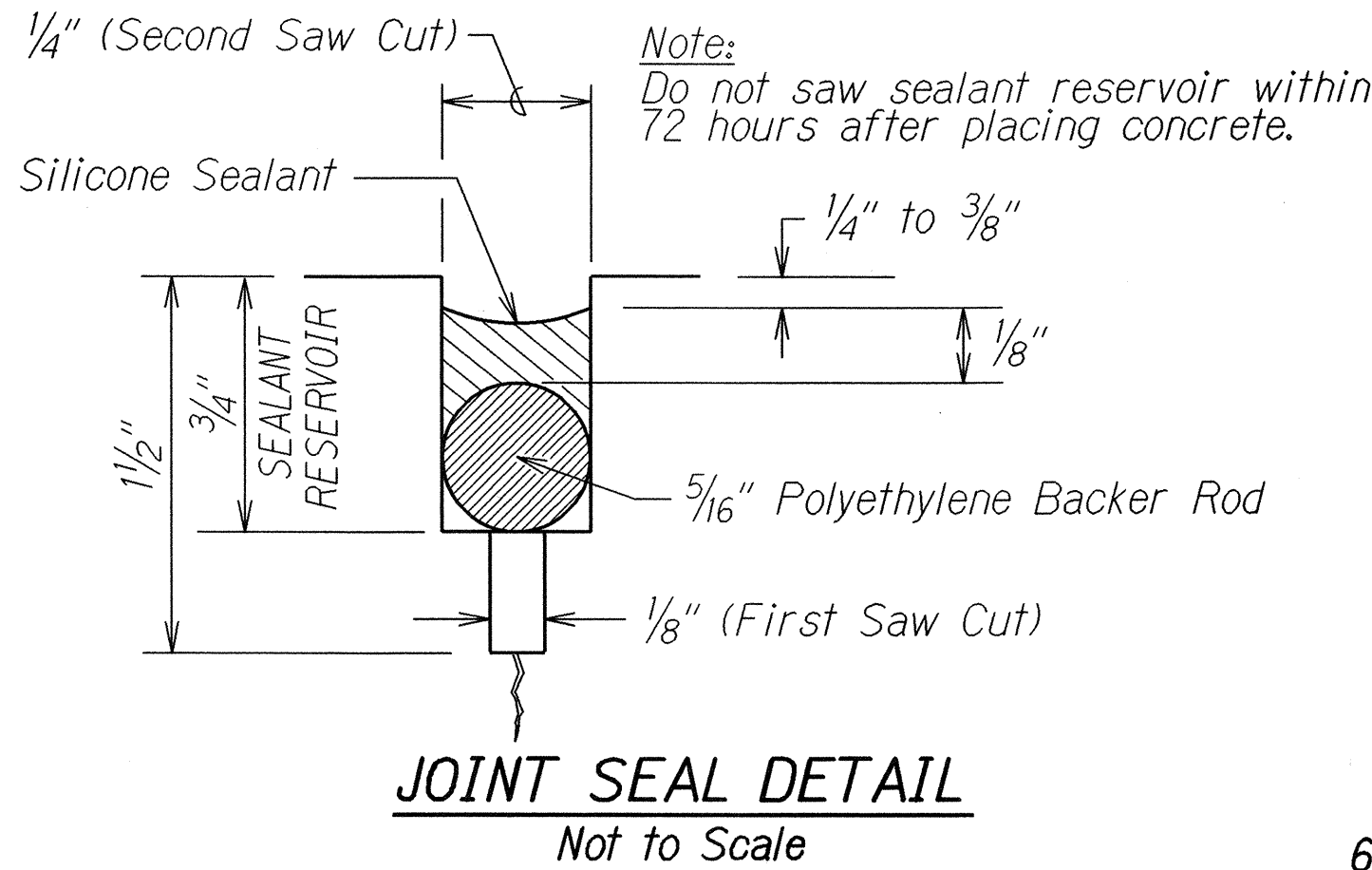
SIDEWALK SCORE LINE DETAIL
Not To Scale



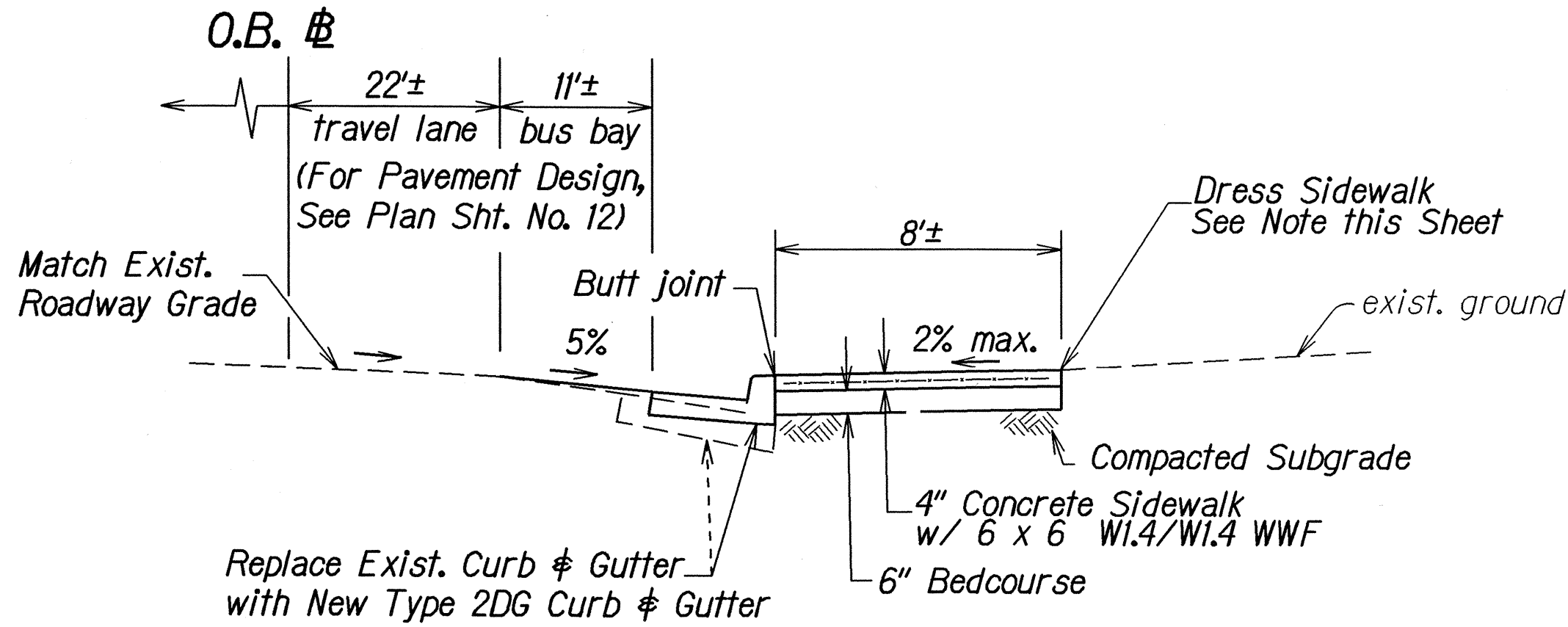
SIDEWALK ISOLATION JOINT DETAIL
Not To Scale



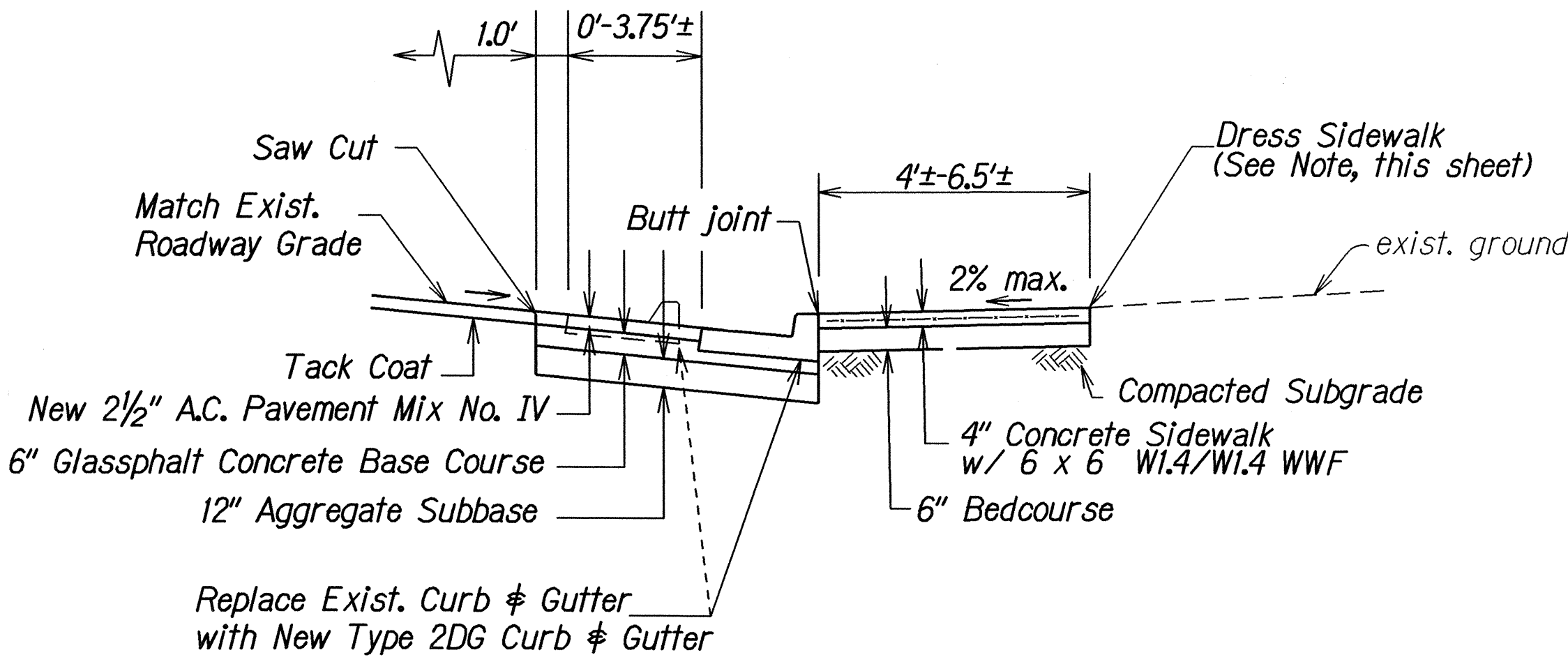
TRANSVERSE CONSTRUCTION JOINT DETAIL
Not to Scale



JOINT SEAL DETAIL
Not to Scale



SIDEWALK DETAIL
O.B. # Sta. 92+79.54± to O.B. # Sta. 94+19.15±
Not to Scale



SIDEWALK DETAIL
O.B. # Sta. 33+43.86± to O.B. # Sta. 35+55±
Not to Scale

- NOTES:**
1. Dressing of sidewalk shall consist of clearing, grubbing, grading, reshaping and compacting the area adjacent to the improvement with suitable material as shown on the plans and/or as directed by the Engineer.
 2. Transverse and longitudinal weakened Plane Joints for sidewalk shall be considered incidental to the New Sidewalk.
 3. Installation of dowels and tie bars including drilling, and epoxy grout shall be incidental to Sidewalk.
 4. Existing Concrete sidewalk shall be saw cut at scorelines prior to reconstructing the sidewalk. Actual location of the scoreline shall be determined in the field. Saw cutting shall be considered incidental to reconstructing the sidewalk.
 5. Provide smooth transition where new sidewalk construction meets the existing grade or sidewalk. Transition shall not be steeper than 2% cross and longitudinal slopes and not less than 6.0 feet long. This work shall be considered incidental to sidewalk

STATE OF HAWAII
DEPARTMENT OF TRANSPORTATION
HIGHWAYS DIVISION

CONCRETE SIDEWALK DETAILS
KAMEHAMEHA HIGHWAY REHABILITATION
Waihau Street to H-2 Interchange
Federal Aid Project No. Nh-099-1(24)
Not to Scale

Date: June, 2006
SHEET No. 1 OF 1 SHEETS

SURVEY PLOTTED BY	DATE
DRAWN BY	
TRACED BY	
CHECKED BY	
QUANTITIES BY	
CHECKED BY	
ORIGINAL PLAN	
NOTE BOOK	
06/23/06	
06/23/06	