

FED. ROAD DIST. NO.	STATE	PROJ. NO.	FISCAL YEAR	SHEET NO.	TOTAL SHEETS
HAWAII	HAW.	98A-01-15	2017	8	40

ENVIRONMENTAL PROTECTION NOTES

- The contractor, at his own expense, shall provide effective measures for the control of fugitive dust emissions from the project and surrounding areas caused by his operations. These measures shall meet the requirements of Hawaii Administrative Rules, Department of Health, Air Pollution Control (11-60.1).
- All grading operations shall be preformed in conformance with the applicable provisions of the grading ordinance to prevent Violation of The Hawaii Administrative Rules, Department of Health, Water Pollution Control and Water Quality Standards (11-54, 11-55) due to erosion and run off to state waters.
- Grub material, demolition wastes, and construction wastes shall be disposed of at an authorized site having a Department of Health Solid Waste Management permit. Open burning is prohibited.
- All excess material shall be removed from the project site.

TEMPORARY EROSION CONTROL MEASURES

- Temporary vegetative cover shall be planted or fibermulch applied as soon as final grades are achieved, or if final grading of the site will be suspended for more than 21 calendar days.
- Temporary vegetative cover shall consist of 40 lbs, common rye grass seed per acre, 400 lbs, per acre 10-10-10 or equivalent fertilizer worked into the soil concurrently with all plantings. planting and maintenance of grass shall conform to the "Hawaii Standard Specifications for Road and Bridge Construction", 2005.

PERMANENT EROSION CONTROL MEASURES

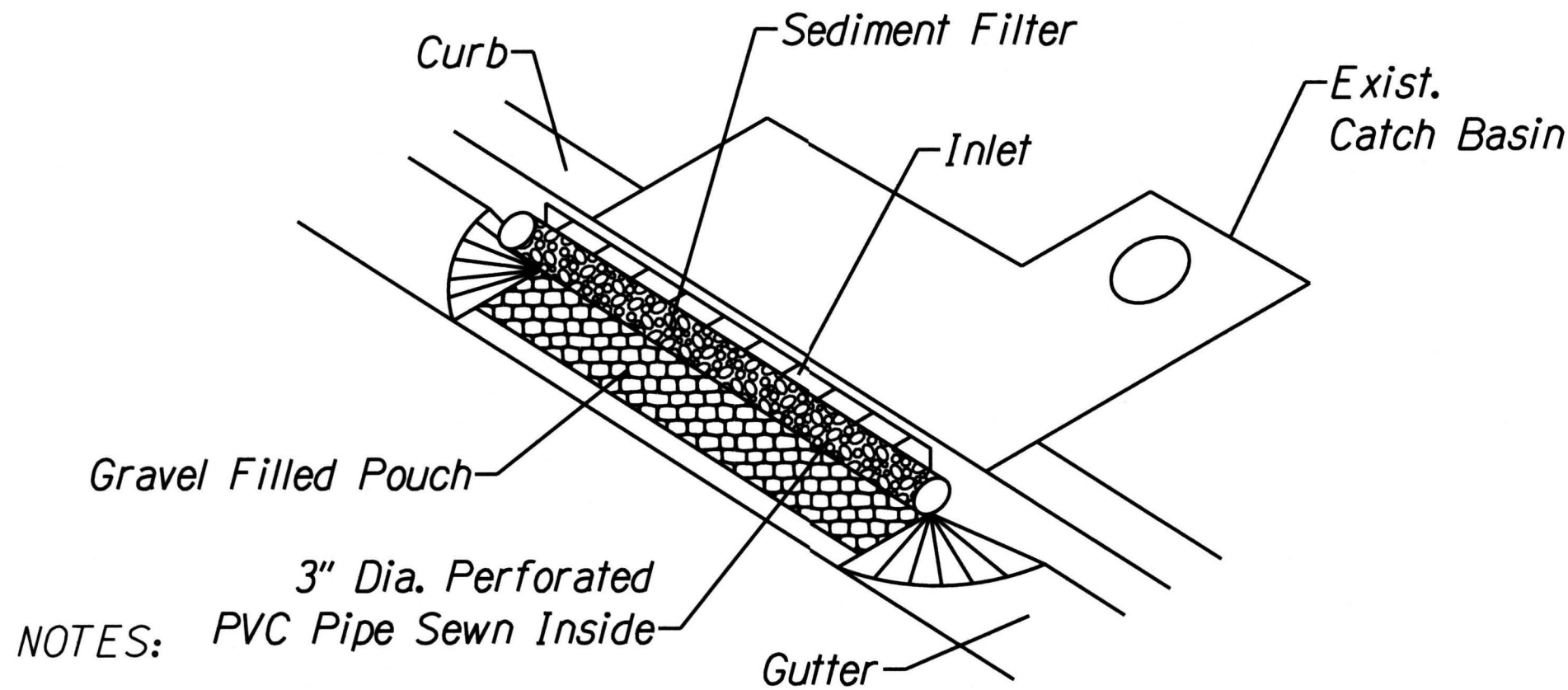
- The contractor shall grass the entire project site, except paved and concrete areas, with specified grassing. The grass shall be planted, fertilized, and maintained in accordance with the "Hawaii Standard Specifications for Road and Bridge Construction", 2005.
- The contractor shall grass all exposed areas as soon as final grades are achieved.

TEMPORARY DUST CONTROL MEASURES

- The graded or project site that is cleared of vegetation shall be kept damp for seven (7) days a week. At the end of each day, the site shall be sufficiently dampened so that the site will remain moistened during the night.
- The contractor shall conduct his operations so that excavation, embankment, and imported materials shall be dampened to prevent dust problems.

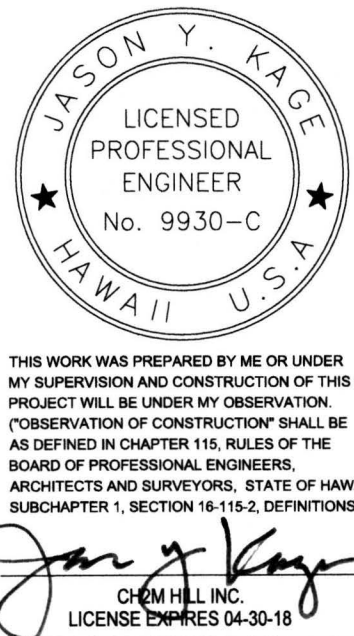
EROSION CONTROL/BEST MANAGEMENT PRACTICES NOTES

- Erosion control measures to be installed prior to start of construction and be maintained until completion of all construction activities.
- The final lift of each day's work shall be compacted to prevent erosion of fill material.
- Catch basin and drain inlet filters shall remain until completion of construction work. Contractor shall periodically inspect catch basin and inlet filters, especially during heavy rainfall, to ensure drainage through filter material is maintained.
- Good housekeeping shall be utilized to ensure protection of roadways from mud, dirt, and debris.
- At the end of grading operations and at the completion of project, contractor shall inspect all catch basin, drain inlet and drain manhole surrounding the project site. Any accumulated sediment and debris found in the storm drain structures shall be removed. Please note that flushing into the drain structures are prohibited.
- The Contractor shall obtain permits and/or licenses for the location of the equipment staging/storage area and provide a copy to the Engineer.



- The Contractor shall use best professional judgement (BPJ) to establish when inlet filters should be removed during times of above normal rainfall events to avoid threats to public health and/or safety. The contractor shall use BPJ to establish when inlet filters should be replaced once the event has passed.
 - To be installed at all existing catch basins adjacent and downstream of work areas.
 - See sht. no. 8 for locations.
- SEDIMENT CONTROL FILTER AT CATCH BASIN**
NOT TO SCALE

SURVEY PLOTTED BY	DATE
DRAWN BY	
DESIGNED BY	
QUANTITIES BY	
CHECKED BY	
ORIGINAL PLAN	
NOTE BOOK	
N.	



STATE OF HAWAII
DEPARTMENT OF TRANSPORTATION
HIGHWAYS DIVISION
**TEMPORARY WATER POLLUTION,
DUST AND EROSION CONTROL**
VINEYARD BOULEVARD
TRAFFIC SIGNALS AT RIVER STREET
PROJECT NO. 98A-01-15
Scale: N/A Date: June, 2017
SHEET No. 8 OF 34 SHEETS