

[illegible]

1-3/4"

4"

2-1/4"

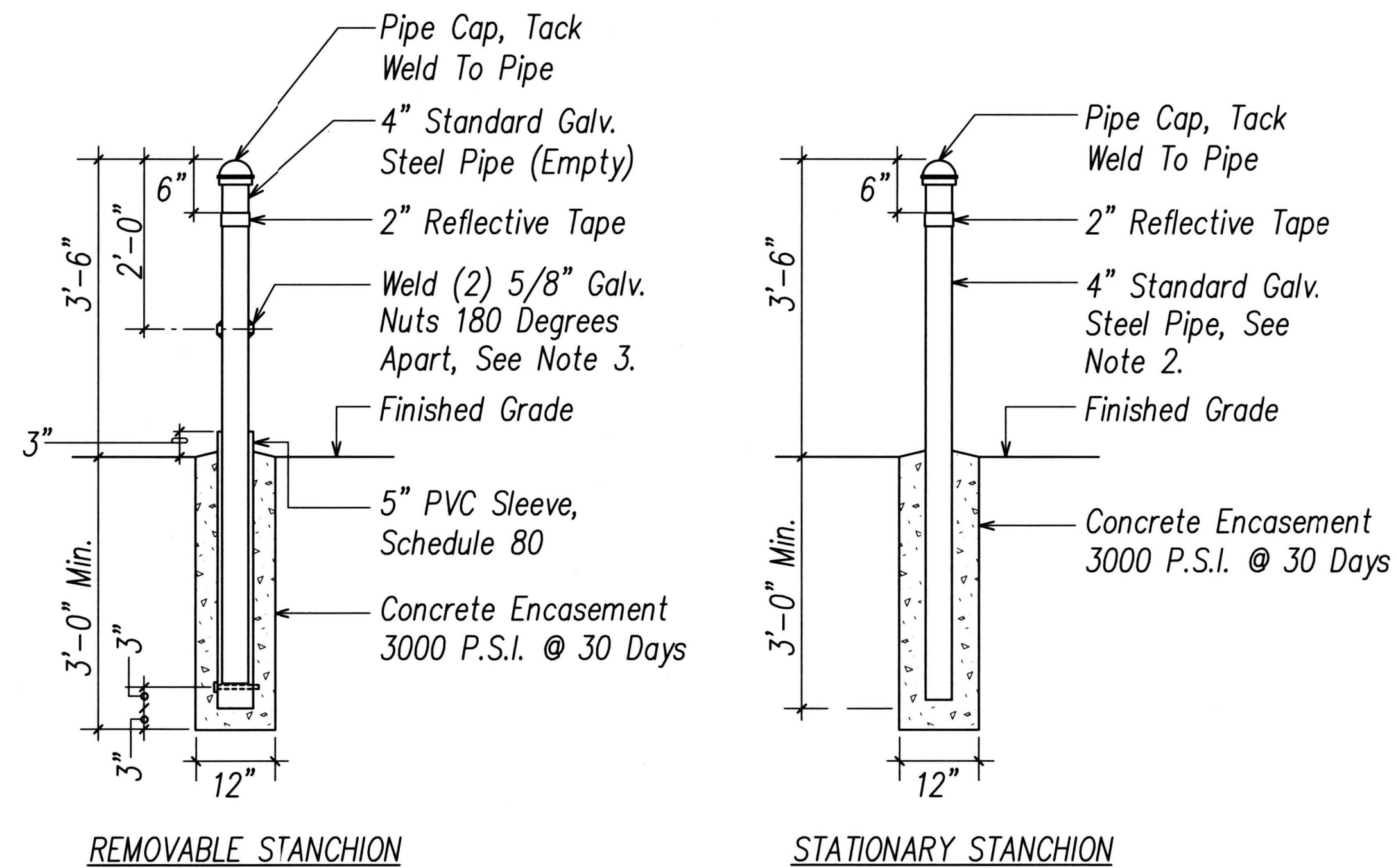
1-1/2" Projection

3/8" Rounded Edges All Around

SECTION "A-A"

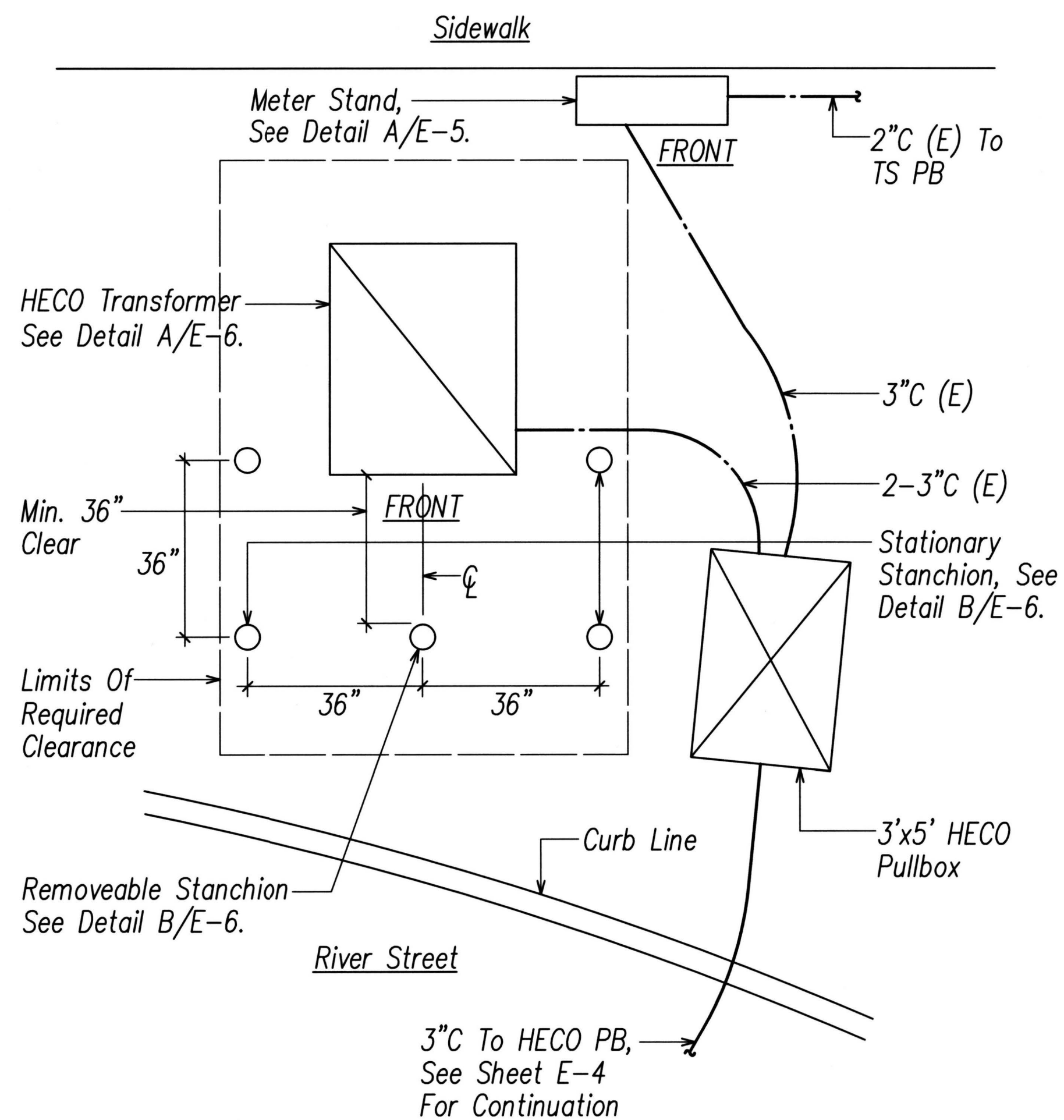
1. Contact HECO Customer Installations Department At Least 2 Weeks Prior To Starting Work.
2. Compressive Strength Of Concrete: 3000 PSI In 28 Days.
3. Reinforcing Round Deformed Bar Shall Be Clean And New.
4. Cure Concrete By Approved Method.
5. Top Of Concrete Pad To Be Smooth, True And Level, Free From Defects.
6. Contractor Has Option Of Furnishing Cast-In-Place Or Precast Pad.
7. Reinforced Concrete Transformer Pad To Be Constructed As Shown On This Sheet and HECO Standard Drawing No. 011249 And No. 30-5001.
8. Grade And Compact Area As Required By HECO.
9. Highest Front Corner Of Transformer Pad Lot Shall Match Final Sidewalk Grade.
10. The Transformer Pad Shall Always Be 2" Higher Than The Highest Point Of The Concrete Pad Fronting The Pad.

HECO TRANSFORMER PAD DETAIL
NOT TO SCALE



STANCHION DETAILS
NOT TO SCALE

1. *All Stanchions Shall Be Installed At The Same Height Above Grade.*
2. *Galvanized Pipe For Stationary Stanchion To Be Filled With Concrete To Weigh Approximately 150 Pounds.*
3. *Removable Stanchions Shall Not Be Filled With Concrete, The Pipe Shall Be Capped, And The Welded Nuts For Screwing In Bolts To Act As Handles For Lifting Removable Stanchions. Bolts To Be Removed After Installation.*
4. *Stanchions Shall Be Painted Yellow Per ANSI Spec Z53.1 To Comply With OSHA Standards For Color Coding.*
5. *Stanchions Shall Conform to ASTM A53.*



ENLARGED EQUIPMENT PLAN
NOT TO SCALE

Date _____



THIS WORK WAS PREPARED BY
ME OR UNDER MY SUPERVISION



STATE OF HAWAII
DEPARTMENT OF TRANSPORTATION
HIGHWAYS DIVISION

MISCELLANEOUS DETAILS

VINEYARD BOULEVARD
TRAFFIC SIGNALS AT RIVER STREET
PROJECT NO. 98A-01-15

Scale: AS NOTED Date: Aug. 2017

SHEET No. E-6 OF 6 SHEETS