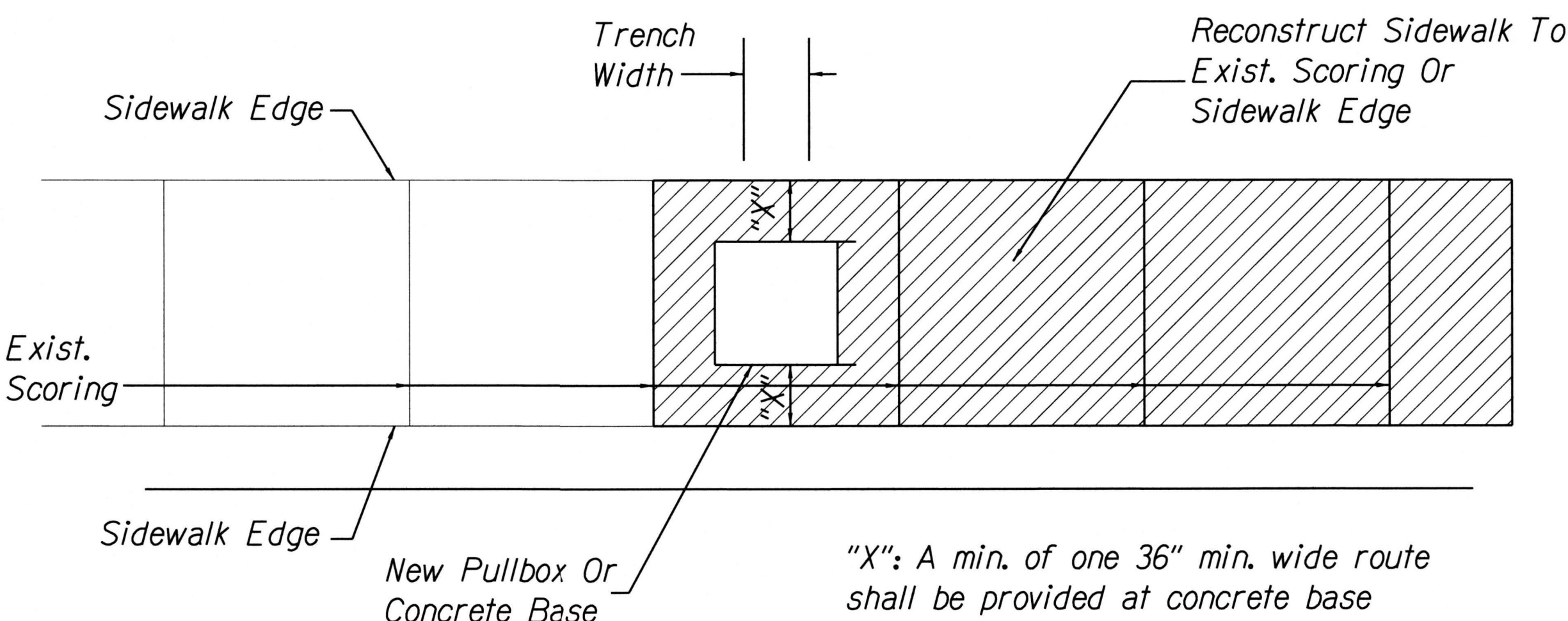
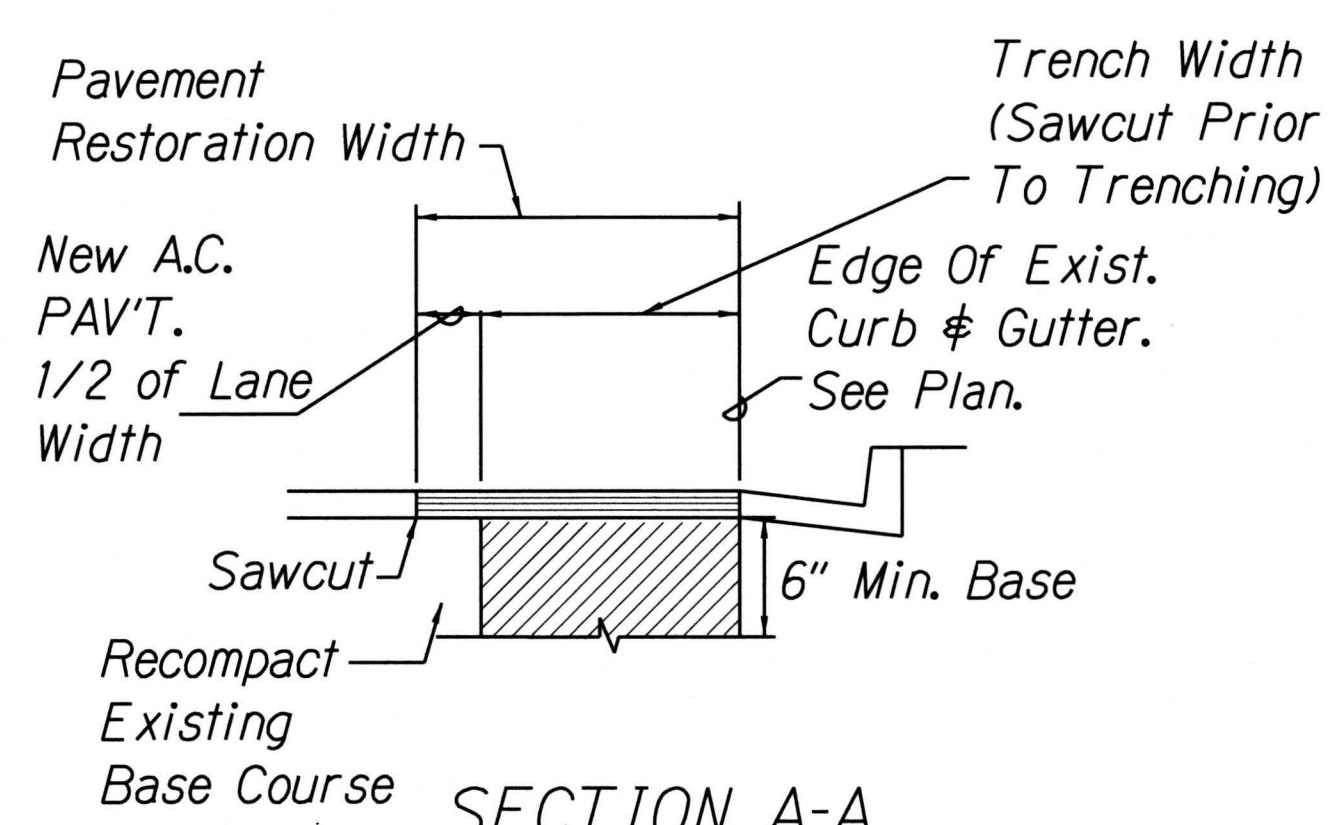


| FED. ROAD DIST. NO. | STATE | PROJ. NO. | FISCAL YEAR | SHEET NO. | TOTAL SHEETS |
|---------------------|-------|-----------|-------------|-----------|--------------|
| HAWAII | HAW. | 98A-01-15 | 2017 | 27 | 40 |

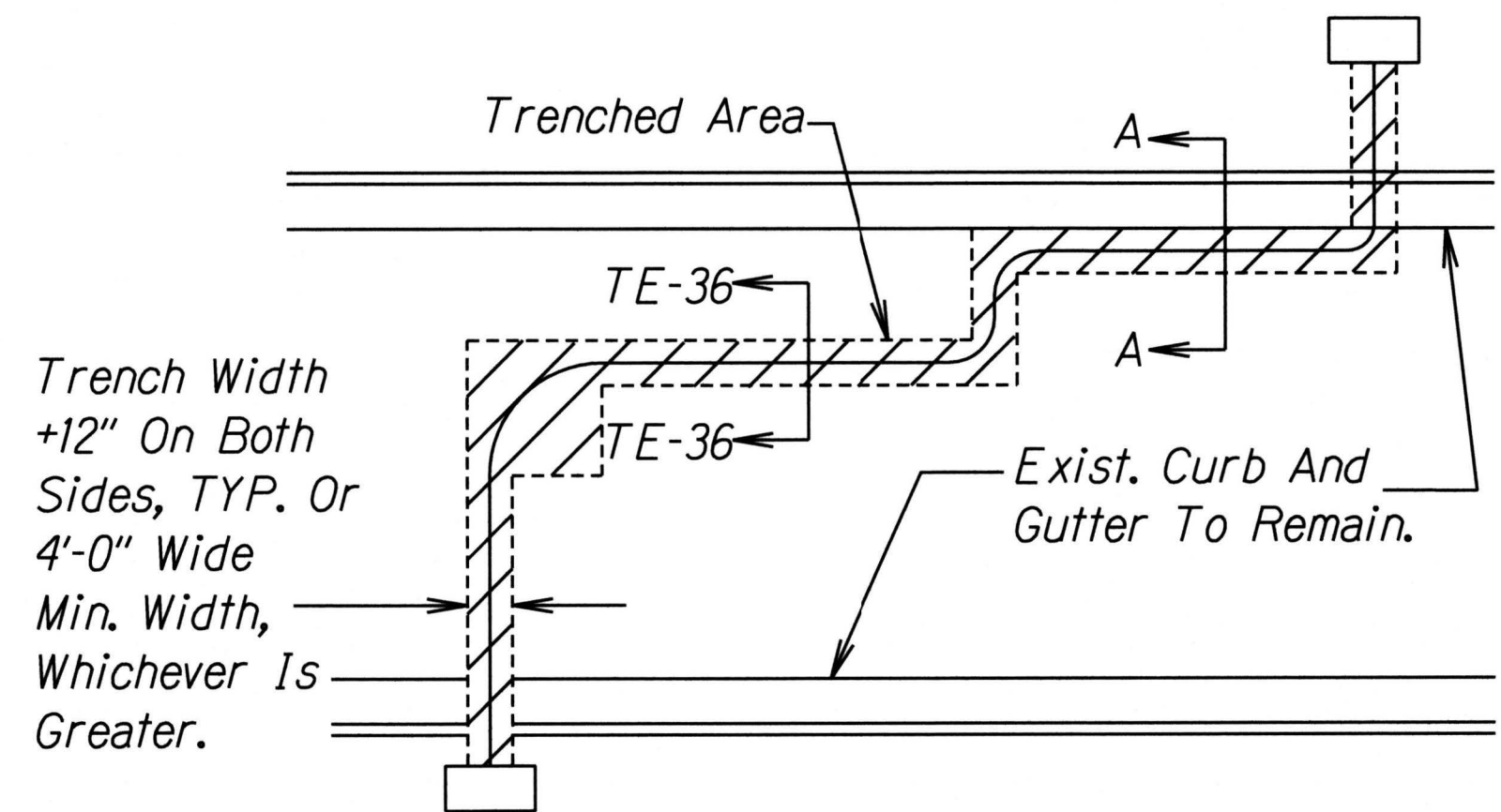


AT SINGLE BLOCK-WIDTH SIDEWALKS
SIDEWALK RECONSTRUCTION DETAILS

Note:
Concrete sidewalk to match existing thicknesses, or the minimum thickness shown, whichever is greater.

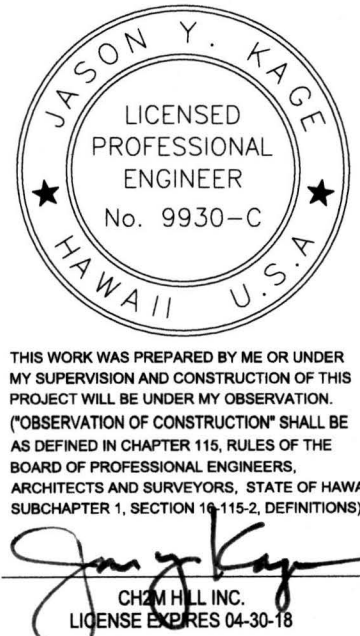


A.C. PAVEMENT RESTORATION DETAIL
NOT TO SCALE



A.C. PAVEMENT RESTORATION PLAN VIEW

| | |
|-------------------|------|
| SURVEY PLOTTED BY | DATE |
| DRAWN BY | |
| DESIGNED BY | |
| CHECKED BY | |
| NOTE BOOK | |
| N. | |



THIS WORK WAS PREPARED BY ME OR UNDER MY SUPERVISION AND CONSTRUCTION OF THIS PROJECT WILL BE UNDER MY OBSERVATION. (OBSERVATION OF CONSTRUCTION SHALL BE AS DEFINED IN CHAPTER 115, RULES OF THE BOARD OF PROFESSIONAL ENGINEERS, ARCHITECTS AND SURVEYORS, STATE OF HAWAII, SUBCHAPTER 1, SECTION 115-2, DEFINITIONS)

Jason Y. Kage
JYK & ASSOCIATES, INC.
LICENSE NUMBER 04-30-18

STATE OF HAWAII
DEPARTMENT OF TRANSPORTATION
HIGHWAYS DIVISION

MISCELLANEOUS DETAILS

VINEYARD BOULEVARD
TRAFFIC SIGNALS AT RIVER STREET
PROJECT NO. 98A-01-15
Scale: NTS Date: June, 2017

SHEET No. 27 OF 34 SHEETS